



“The Mill & Bridge at Newton Lower Falls,” undated
Wellesley Historical Society; Postcard Collection

LOWER FALLS IMAGES from

HISTORIC
Newton



historicnewton.org

wellesleyhistoricalsociety.org



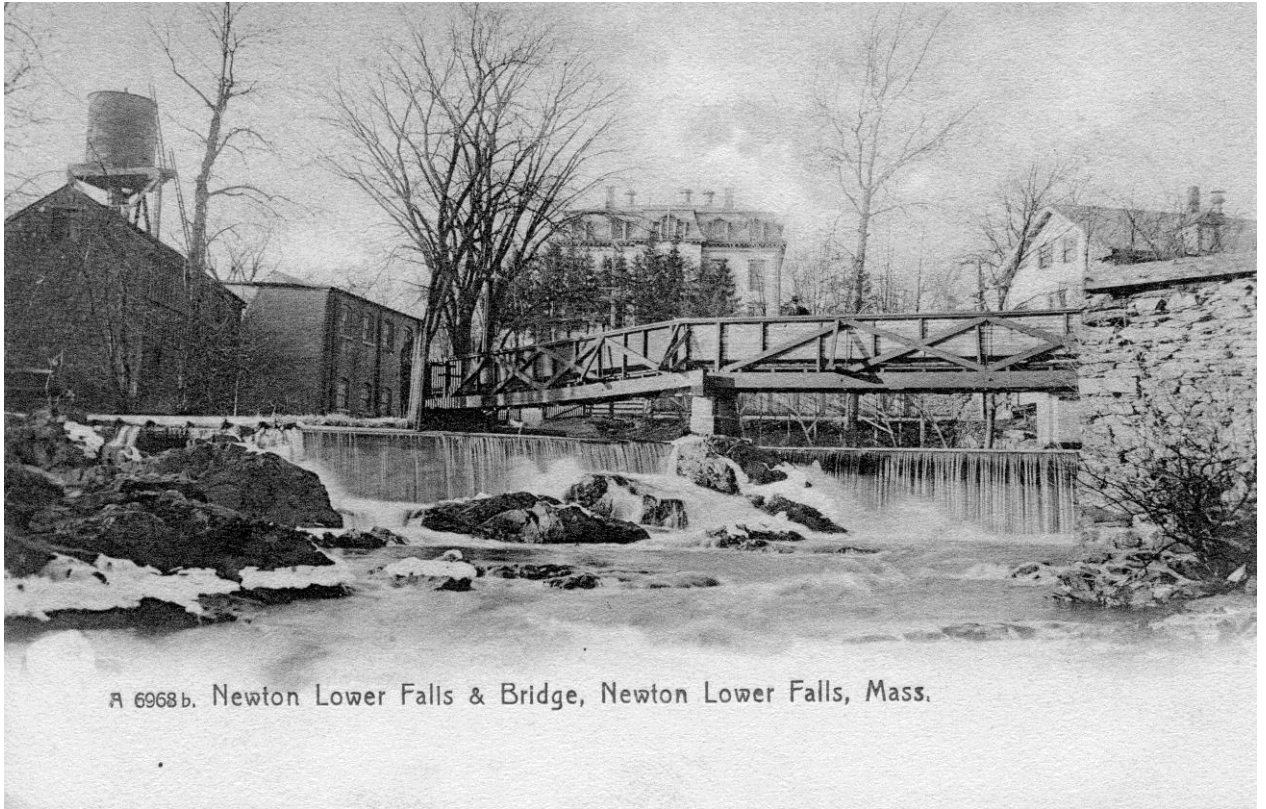
“Charles River at Fyffe Bridge,” undated
Archives at Historic Newton



“Lower Falls, view of mills,” 1888
Archives at Historic Newton



Newton Lower Falls looking to North across Washington Street, St. Mary's at the far right, undated
Wellesley Historical Society; Photograph Collection



А 6968b. Newton Lower Falls & Bridge, Newton Lower Falls, Mass.

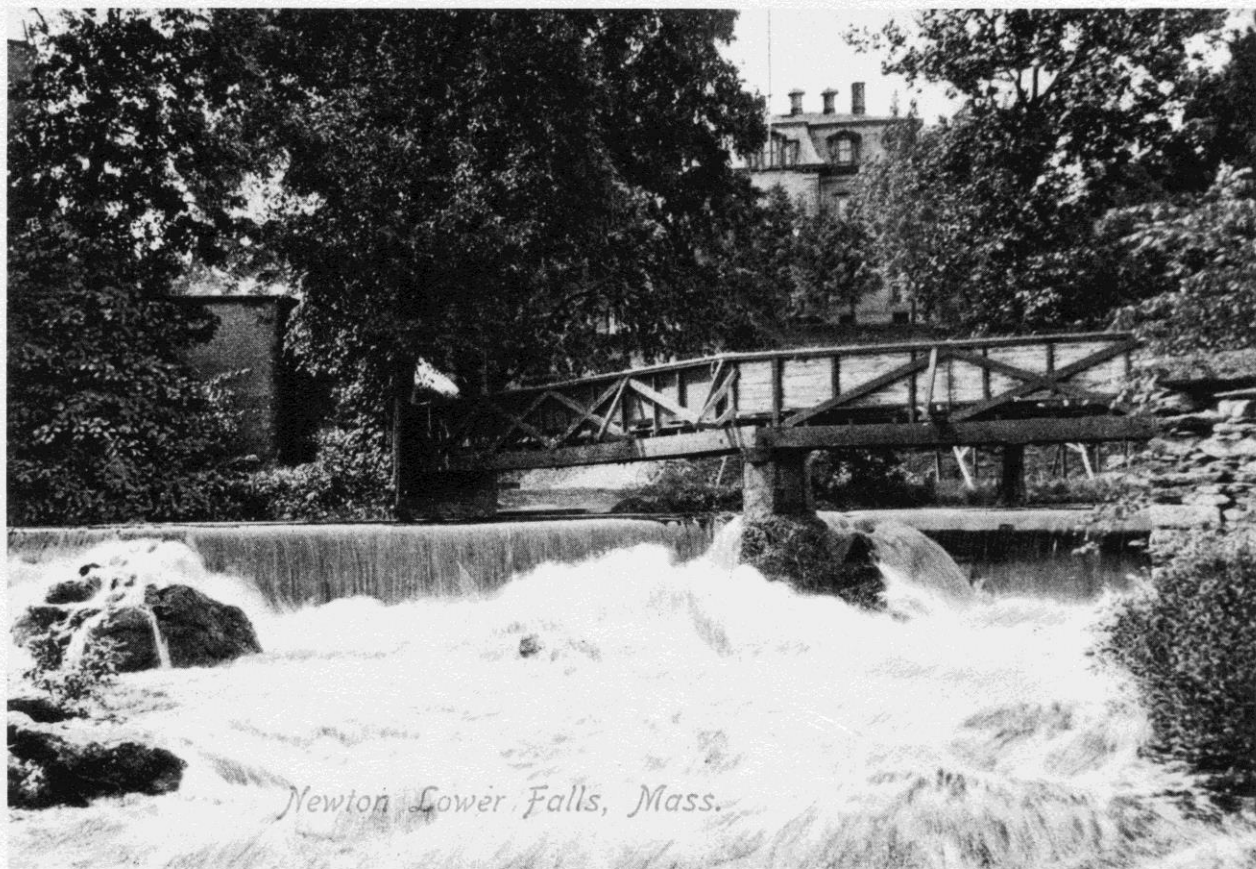
Newton Lower Falls & Bridge, Newton Lower Falls, Mass.,
undated Wellesley Historical Society; Postcard Collection



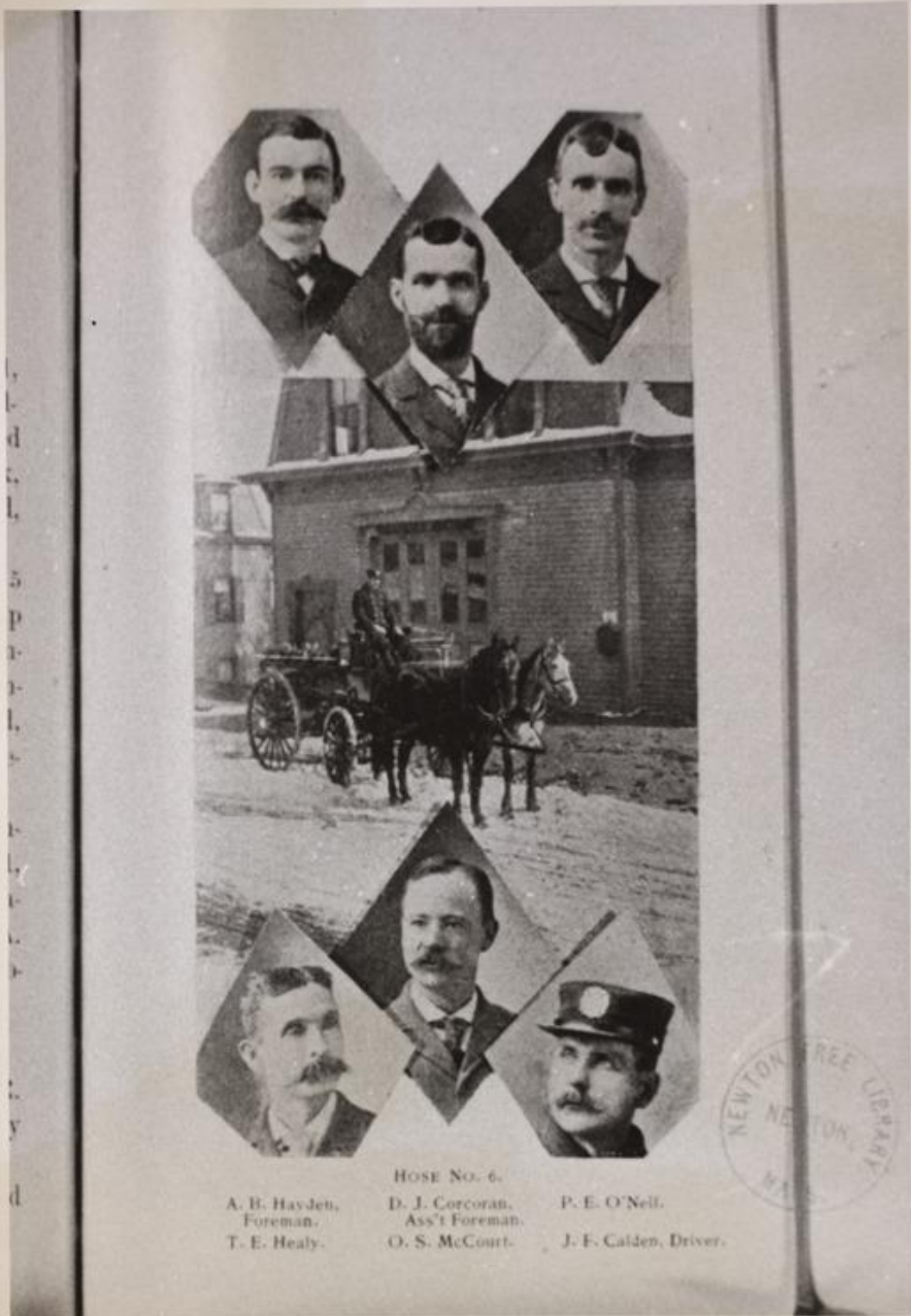
Newton Lower Falls, undated
Wellesley Historical Society; Photograph Collection



Hamilton School, 1870s
Archives at Historic Newton



Newton Lower Falls, undated
Wellesley Historical Society; Photograph Collection



HOSE NO. 6.

A. B. Hayden,
Foreman.
T. E. Healy.

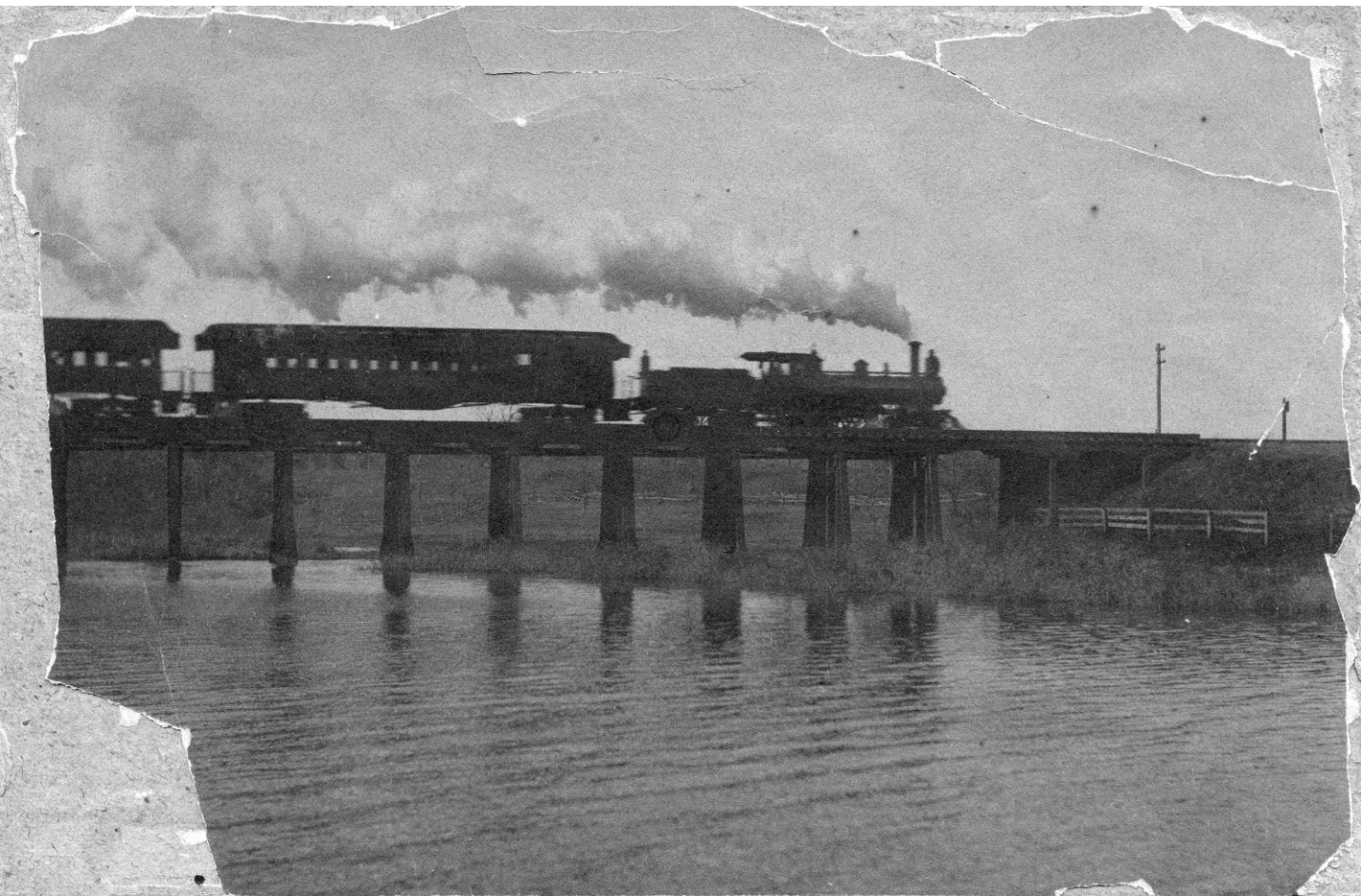
D. J. Corcoran,
Ass't Foreman.
O. S. McCourt.

P. E. O'Neill.
J. F. Cadden, Driver.

Fire Department. Newton, MA. Hose #6,
Newton Lower Falls, ca. 1880–1995,
Newton Free Library
<https://ark.digitalcommonwealth.org/ark:/50959/2227mv40m>



Wellesley Lower Falls Railroad Station, undated
Wellesley Historical Society; Postcard Collection



“R.R. Bridge Over Charles River between Newton Lower Falls
Riverside”, undated

Wellesley Historical Society; Photograph Collection