



Finance Committee Agenda

City of Newton In City Council

SPECIAL MEETING

Monday, December 16, 2019

6:45 PM
Room 205

Item Scheduled for Discussion:

Referred to Public Facilities and Finance Committees

#419-19

Appropriate \$200,000 for the Comm Ave Carriageway Greening Improvements

HER HONOR THE MAYOR requesting authorization to appropriate and expend the sum of two hundred thousand dollars (\$200,000) from Certified Free Cash to be managed by the Planning Department for the design/engineering of the Commonwealth Ave Carriageway Greening Improvements from Lyons Field west to the Charles River Bridge.

Public Facilities Approved 5-0-1 (Councilor Gentile abstaining and Councilors Laredo and Lappin not voting)

Respectfully submitted,

Leonard J. Gentile, Chair

The location of this meeting is accessible and reasonable accommodations will be provided to persons with disabilities who require assistance. If you need a reasonable accommodation, please contact the city of Newton's ADA Coordinator, Jini Fairley, at least two business days in advance of the meeting: jfairley@newtonma.gov or (617) 796-1253. The city's TTY/TDD direct line is: 617-796-1089. For the Telecommunications Relay Service (TRS), please dial 711.



RUTHANNE FULLER
MAYOR

City of Newton, Massachusetts
Office of the Mayor

419-19

Telephone
(617) 796-1100

Telefax
(617) 796-1113

TDD
(617) 796-1089

E-mail
rfuller@newtonma.gov

RECEIVED
Newton City Clerk
2019 NOV 12 PM 3:20
David A. O'Connell, CMC
Newton, MA 02459

November 12, 2019

Honorable City Council
Newton City Hall
1000 Commonwealth Avenue
Newton Centre, MA 02459

Councilors:

I respectfully submit a docket item to your Honorable Council requesting authorization to appropriate and expend the sum of \$200,000 from June 30, 2019 Certified Free Cash to a capital account to be managed by the Planning Department for design/engineering of the Commonwealth Avenue Carriageway Greening Improvements.

The \$200,000 request for engineering/design for the Commonwealth Avenue Carriageway Greening Improvements from Lyons Field west to the Charles River Bridge will allow the City to advance the conceptual design for this section of the Carriageway to a 25% design stage. It is critically important that we achieve this stage in the next six months to stay on track with the State's schedule for the bridge design and to make the project eligible for listing on the State's Transportation Improvement Program (TIP) funding, which this project hopes to leverage for eventual construction funding.

Thank you for your consideration of this matter.

Sincerely,

Ruthanne Fuller
Mayor



Ruthanne Fuller
Mayor

City of Newton, Massachusetts
Office of the Mayor

419-19

Telephone
(617) 796-1100

Fax
(617) 796-1113

TDD/TTY
(617) 796-1089

Email
rfuller@newtonma.gov

MEMORANDUM

Date: December 13, 2019
To: Councilor Gentile, Chair, Finance Committee
From: Barney Heath, Director of Planning and Development
Nicole Freedman, Director of Transportation Planning
Subject: Commonwealth Avenue Carriageway

The Commonwealth Avenue Carriageway Project proposes to enhance the Carriageway between the Charles River bridge and Lyons Field by realigning vehicular traffic in order to add more green space and improve pedestrian and bicycle access. Vehicular throughput on Commonwealth Avenue will not be substantially impacted; importantly westbound vehicles will continue to have a free flow movement through Auburn Street signal, unless a pedestrian is crossing the intersection.

The project links into three existing and current MassDOT projects:

- Route 30 bridge project – Repairs the vehicle bridge over the Charles River. Currently at 25% design with a public meeting slated for late winter.
- Weston Route 30 reconstruction – Creates a new bike and pedestrian shared use path along Route 30 from the Rt 128 interchange to Natick. Will be at 25% design in January.
- Laselle Boathouse bridge replacement – Repairs pedestrian bridge behind LaSalle boathouse connecting Riverside Road on north of Charles River to network of trails on south side river.

As the connectivity to the existing MassDOT projects is a critical part of this project, the City is working in concert with MassDOT to:

- Ensure the design of the MassDOT bridge project, which extends through the Auburn Street intersection supports the City's proposed new design for the Carriageway
- Seek MassDOT construction funds via the TIP program
- Encourage MassDOT to provide funding for the Carriageway Project in the same construction year as the MassDOT bridge project, estimated to be in the next 5 years.

The City hosted a public meeting regarding conceptual design option on October 17, 2019 at the Marriott Hotel. A copy of the powerpoint presented by the City and the consultant, Howard Stein Hudson, is attached to this memorandum.

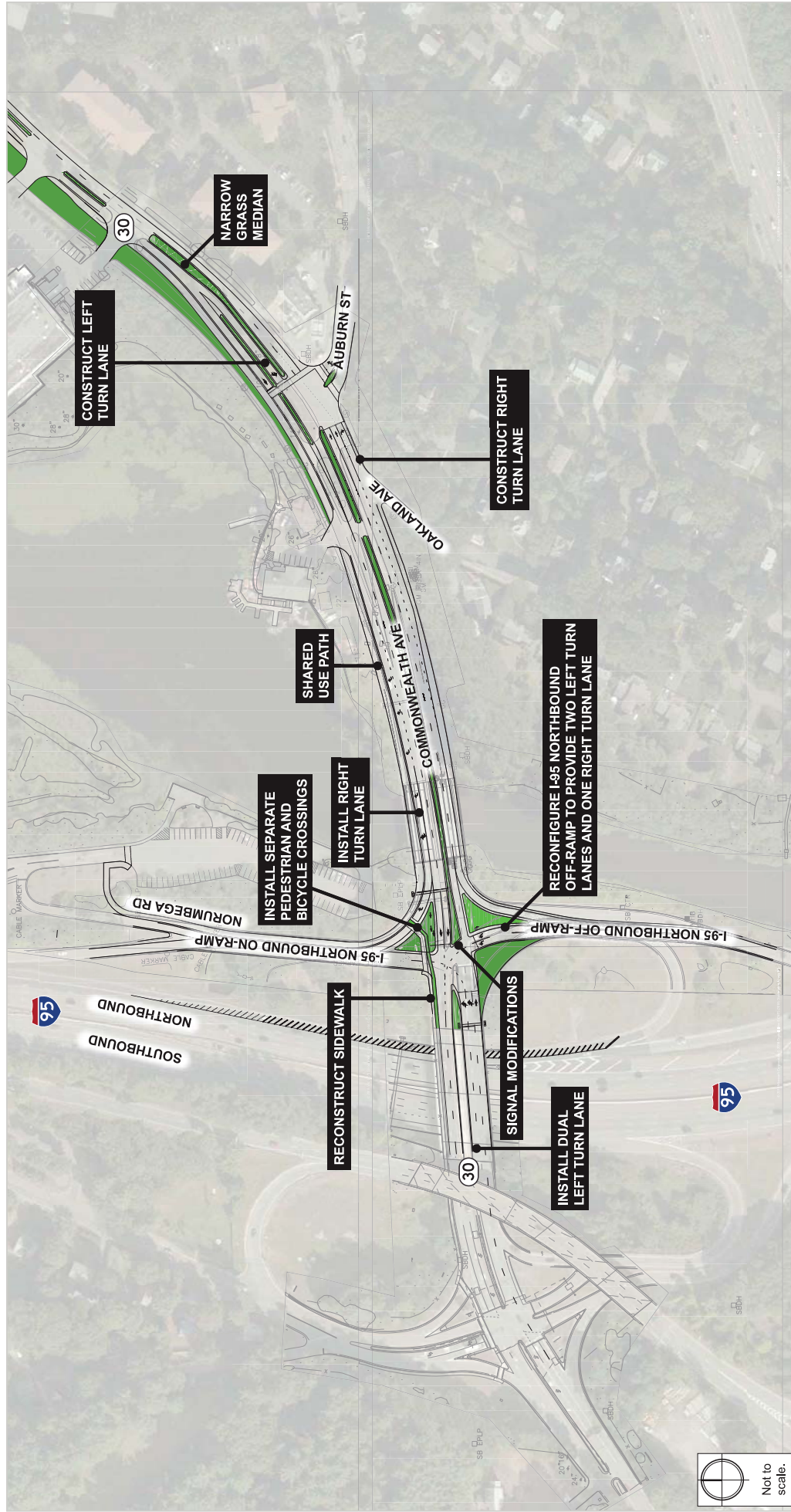
SCHEDULE

MassDOT has recommended the City design the Carriageway project consistent with their schedule for the Route 30 bridge project, which includes completing the 25% design process spring, 2020. City projects total design costs to be \$500,000, with \$200,000 required for 25% design.

BACKGROUND

The constituent-formed Riverside Greenway Working Group (RGWG) first initiated the project as a vision for a seamless walking and biking connection between Newton, Weston and Wellesley, increasing access to greenspace, trails and other recreational opportunities. With technical and financial support by the Solomon Foundation, the Riverside Greenway Working Group successfully garnered the support of MassDOT, DCR and the City of Newton. The City of Newton, DCR and MassDOT are advancing numerous elements of the RGWG's original vision.

Figure 17. *Alternative 2 (Preferred Alternative)*





CALC'D BY: KS
CHK'D BY: DN

DATE: 11/5/2019
DATE: 11/7/2019

CITY: Newton
PROJECT: Newton Carriageway

SUMMARY OF COSTS

Roadway Construction Cost		\$2,250,000
Traffic Equipment Cost		\$350,000
Landscaping Cost		\$675,000
Project Subtotal		\$3,275,000
Design Contingency	30%	\$982,500
Temporary Traffic Control	10%	\$327,500
Total Project Cost		4,585,000
SAY		4,590,000

Newton Carriageway Biking and Walking Path

Presented by

Herb Nolan - *Solomon Foundation*

**Amy Ingles - *HSH, Active Transportation
Leader***

October 17, 2019



HOWARD STEIN HUDSON

Engineers + Planners

Riverside Greenway Working Group

Engineers + Planners



Project Origin

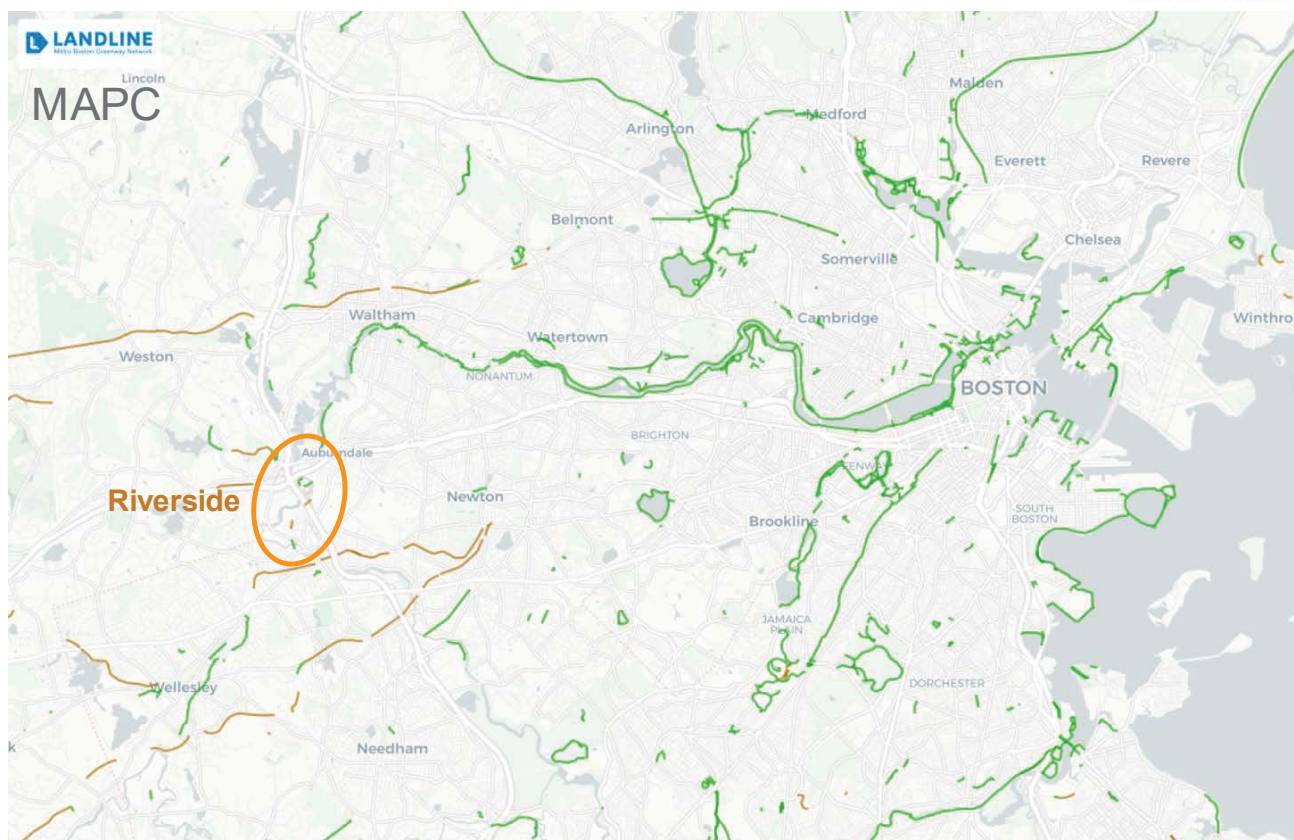
Engineers + Planners

- **Riverside Greenway Working Group:**
Vision to create a seamless biking and walking connection between Newton, Weston, and Wellesley increasing access to greenspace, trails, and other recreation opportunities
- **MassTrails, Solomon Foundation, and City of Newton support vision**
- **MassDOT projects**
 - MassDOT – Route 30 bridge project
 - Weston Route 30 reconstruction
 - Laselle Boathouse bridge replacement

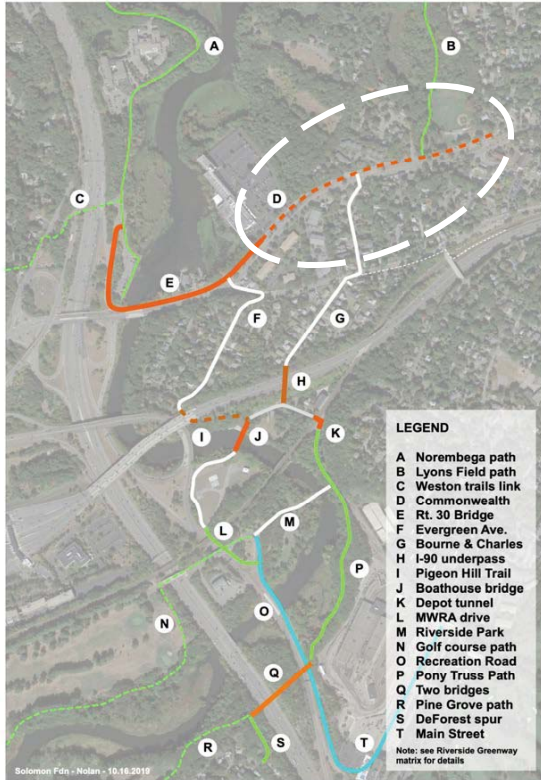


Missing link in a regional path network

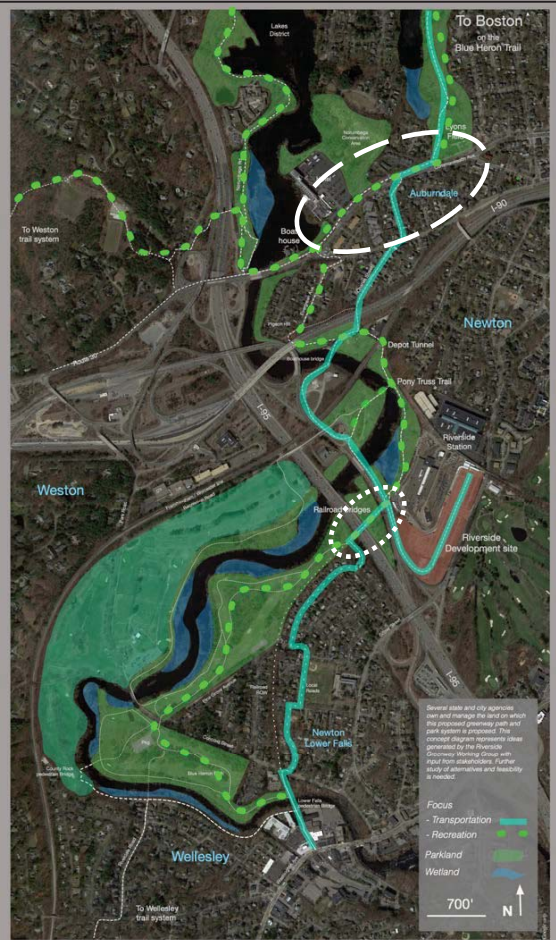
Engineers + Planners



Riverside Greenways



Riverside Greenway Network Plan



Riverside Greenway Network Vision

Riverside Greenway Working Group - 9.11.19

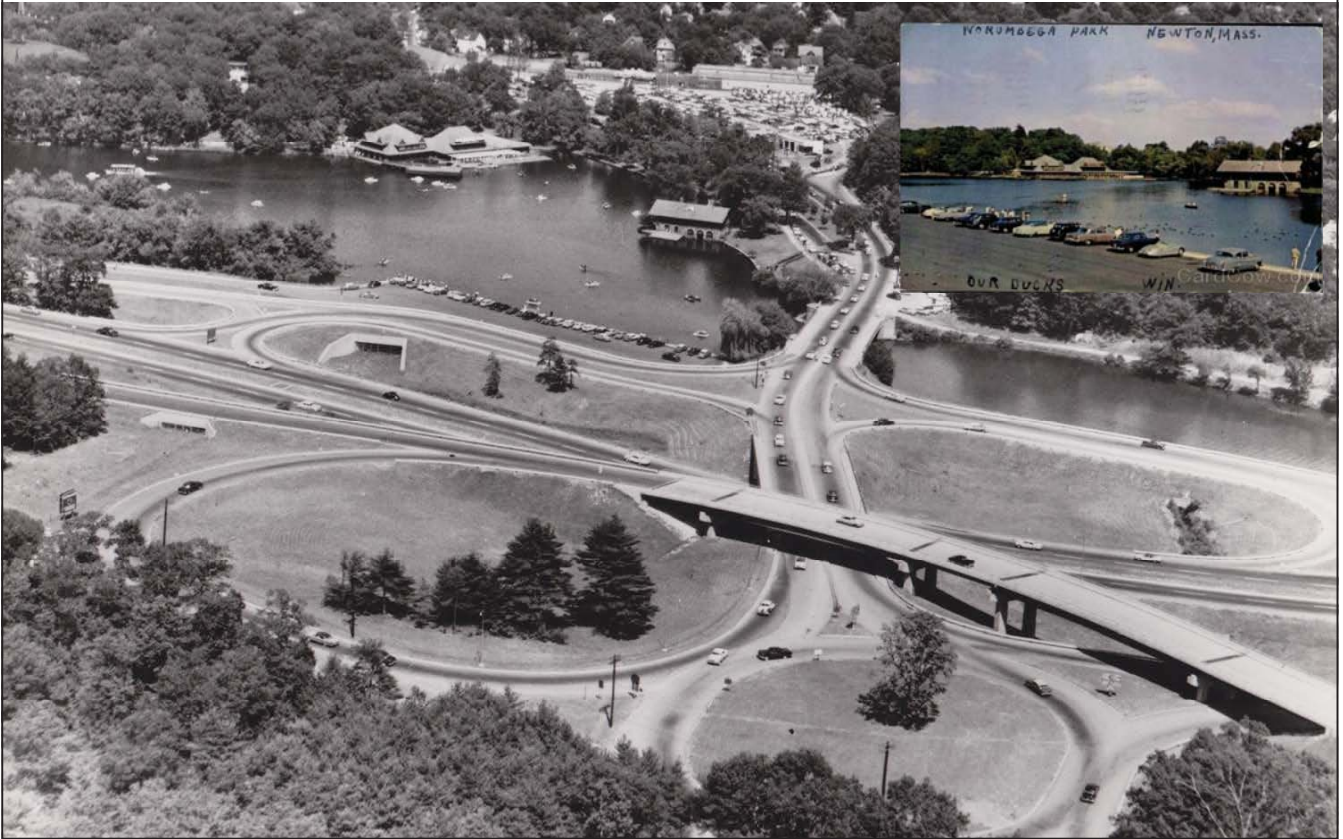
19th century

Engineers + Planners



20th century

Engineers + Planners



21st century

Engineers + Planners



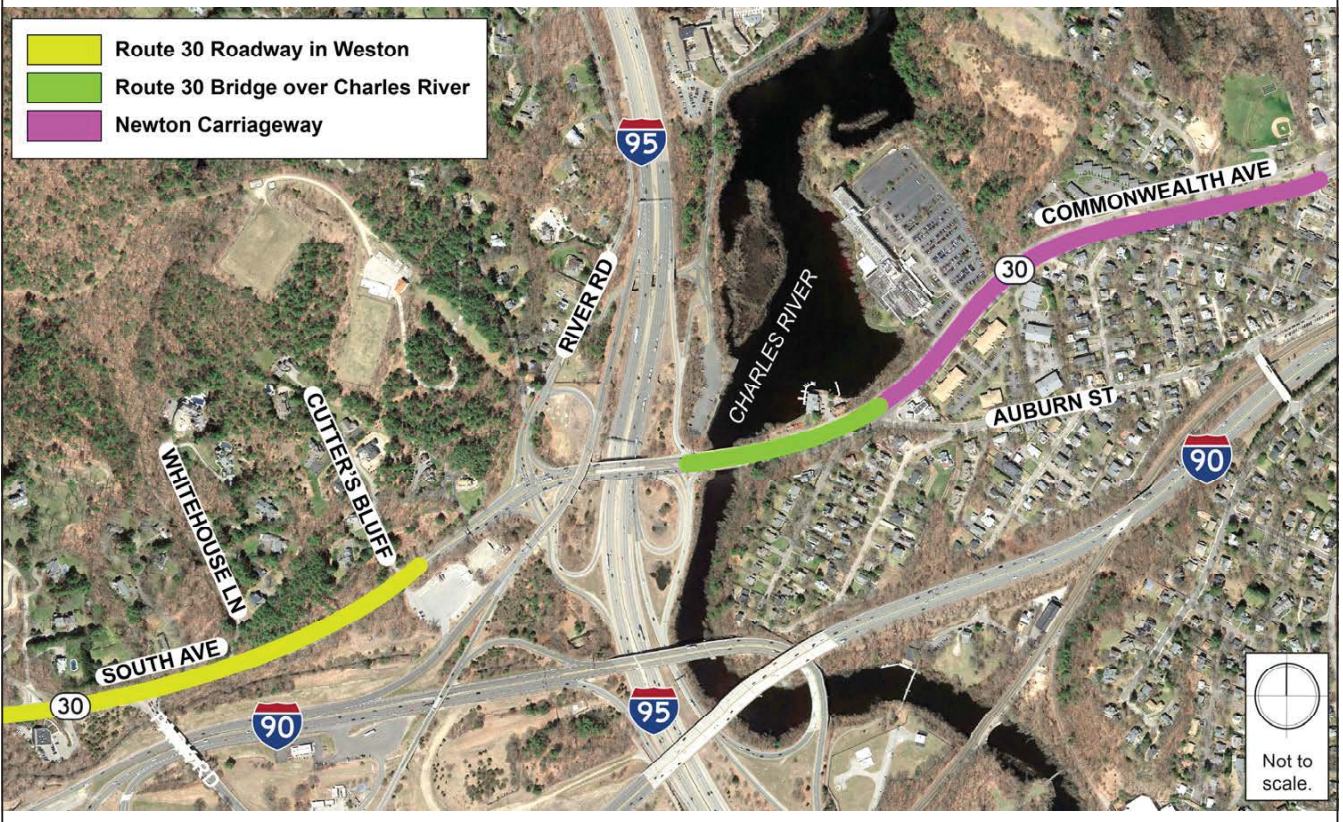
21th century

Engineers + Planners



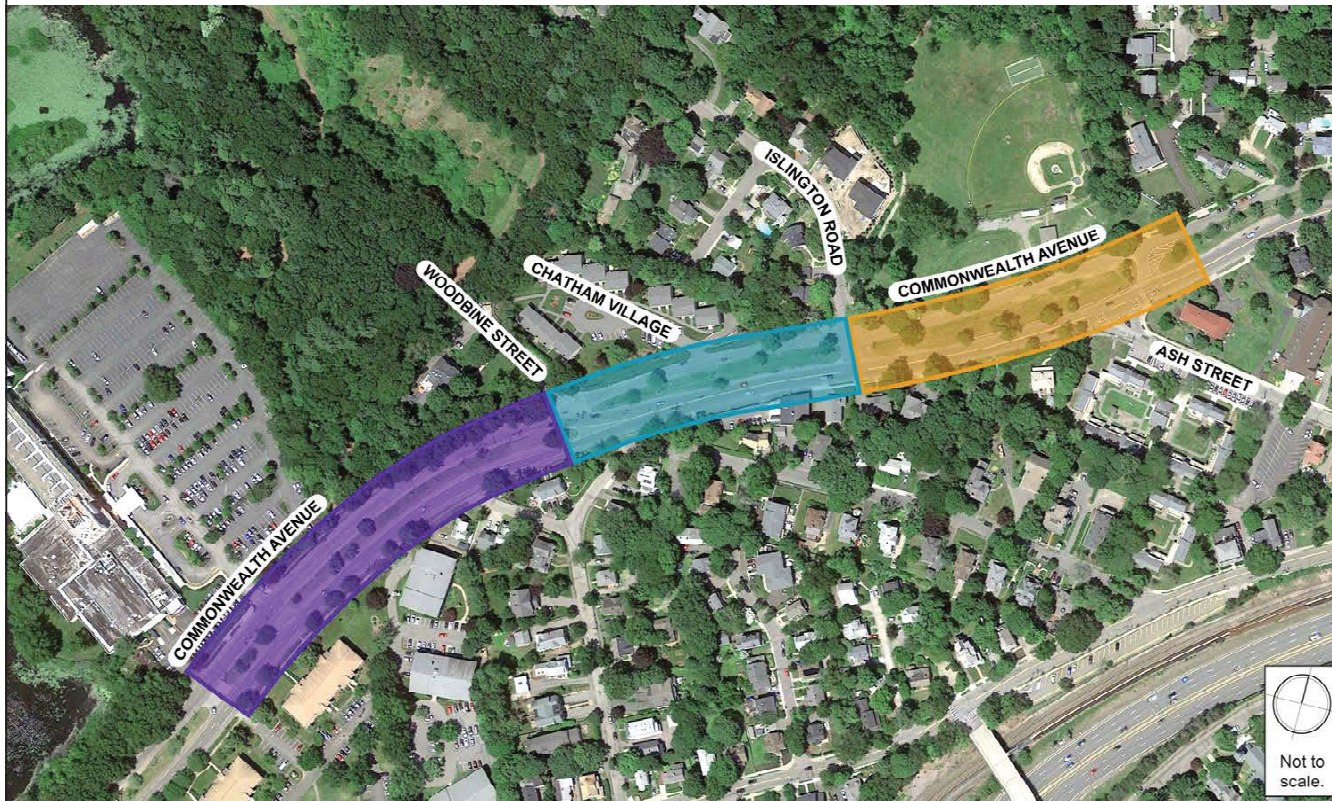
Map of Related Projects

Engineers + Planners



Project Area

Engineers + Planners



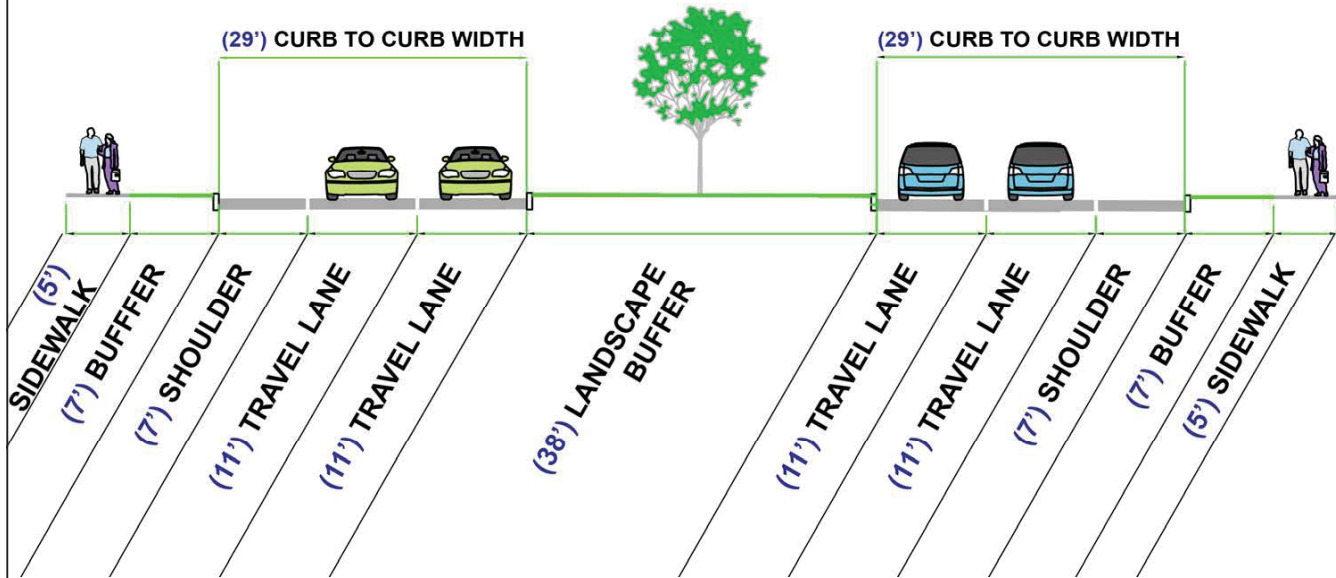
Existing Conditions Marriott to Woodbine Street

Engineers + Planners



Existing Conditions Marriott to Woodbine Street

Engineers + Planners



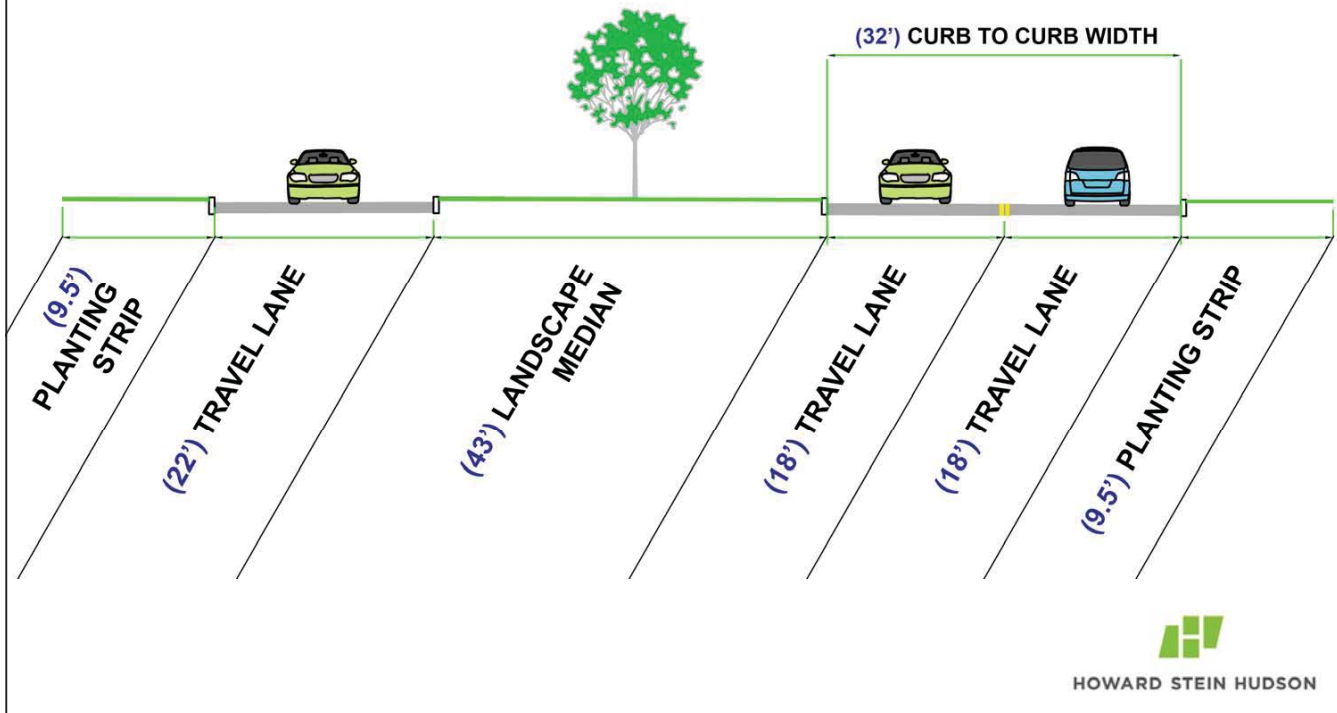
Existing Conditions Woodbine Street to Islington Road

Engineers + Planners



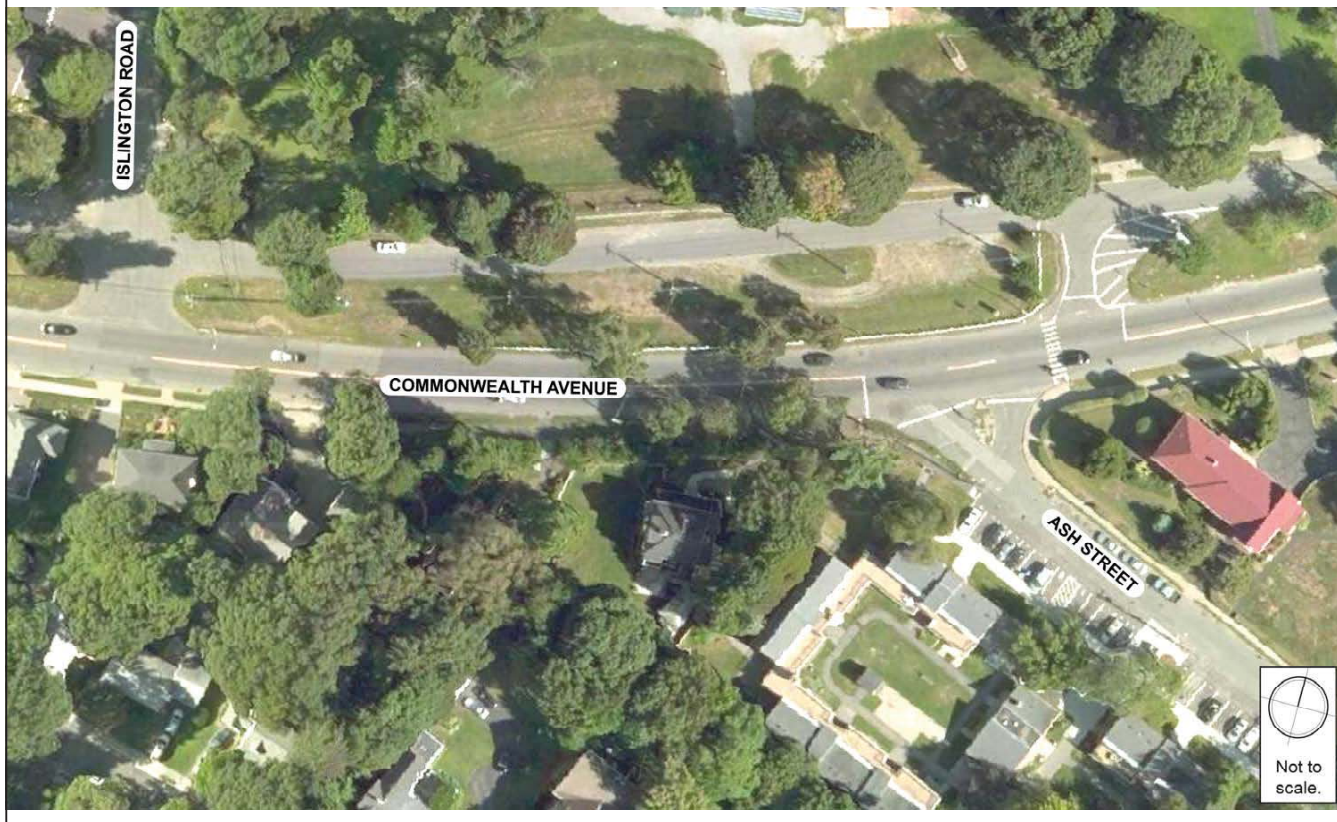
Existing Conditions Woodbine Street to Islington Road

Engineers + Planners



Existing Conditions Islington Road to Ash Street

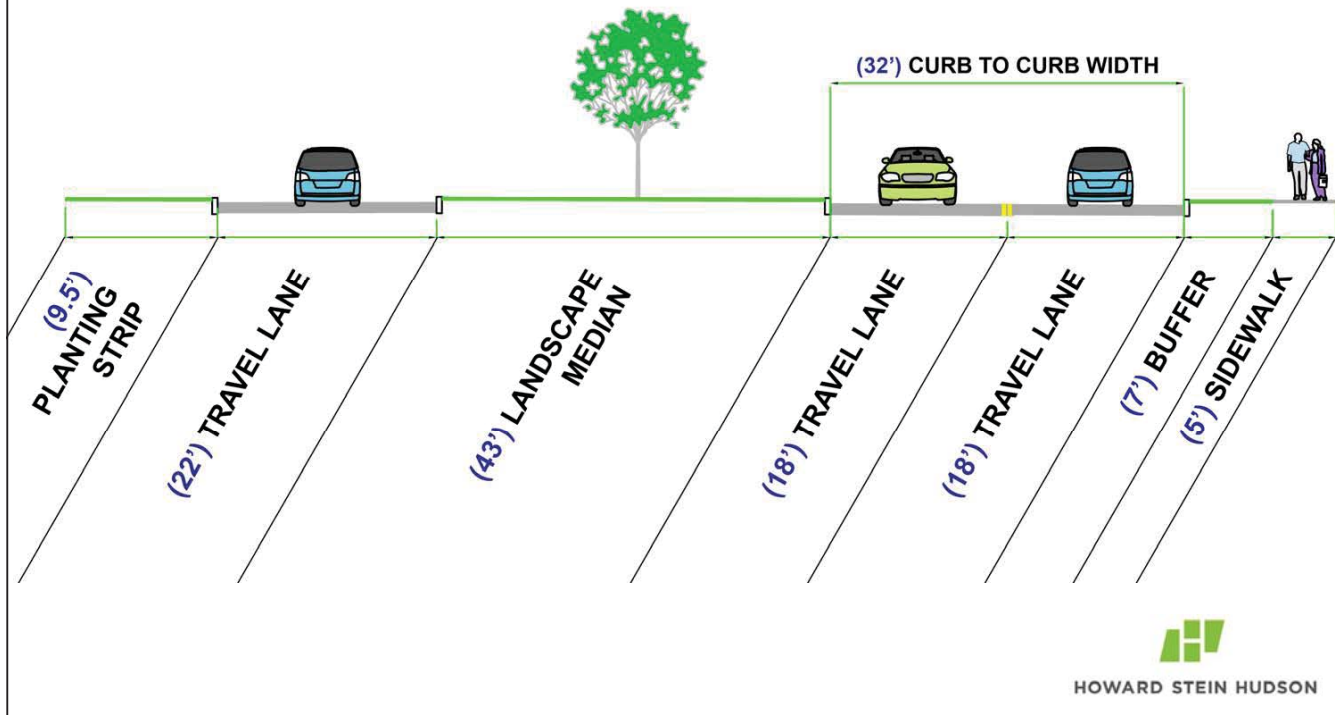
Engineers + Planners



Existing Conditions

Islington Road to Ash Street

Engineers + Planners



Proposed Concept

Engineers + Planners

- Separated space for bikes and peds
- Commonwealth Avenue – two lanes
- Two Options for Lyons Field area:
 1. Reduced carriageway
 1. Vehicular access preserved
 2. Formalized parking
 2. Removed carriageway
 1. Bike/ped access only
 2. On-street parking on Commonwealth Ave

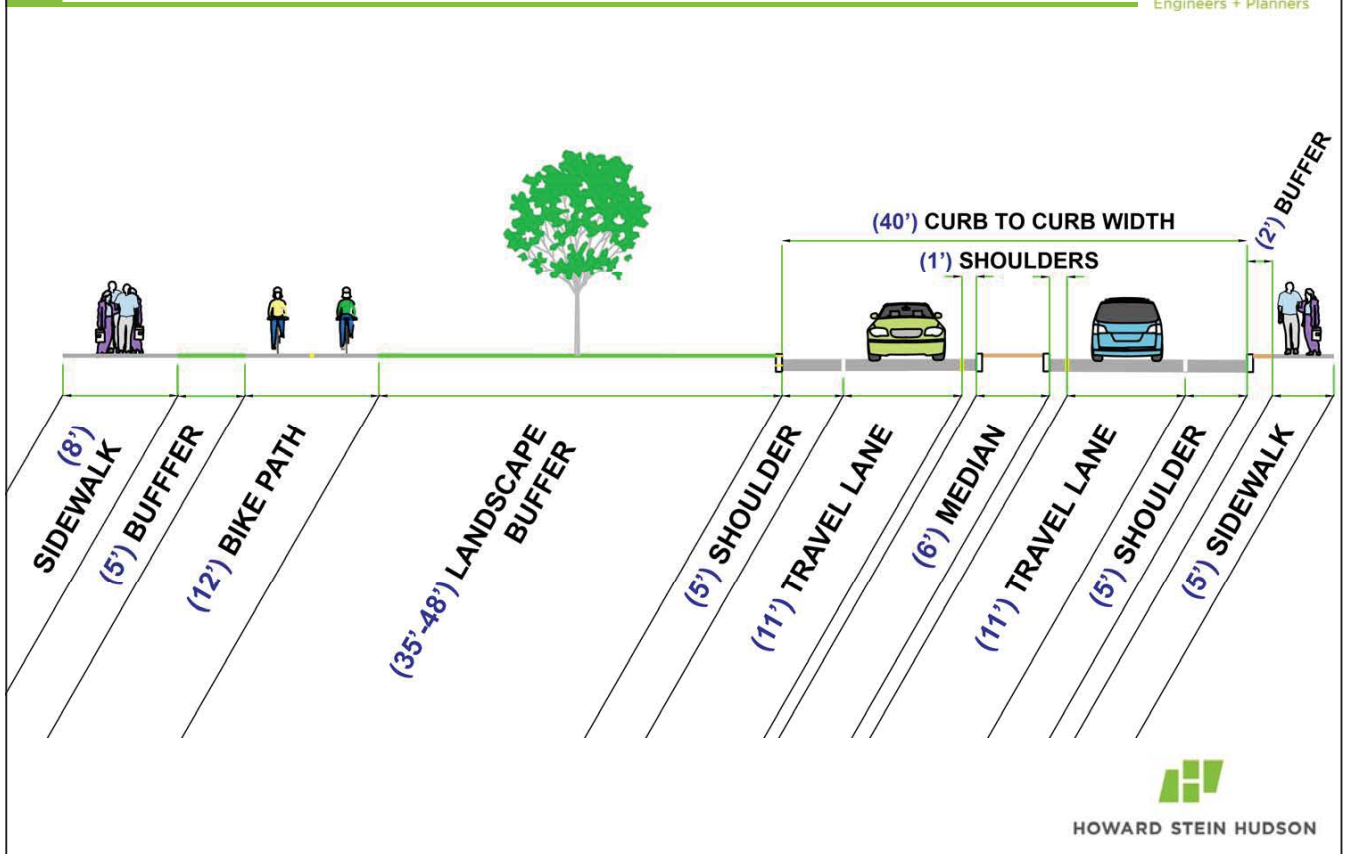
Proposed Concept Marriott to Woodbine Street

Engineers + Planners



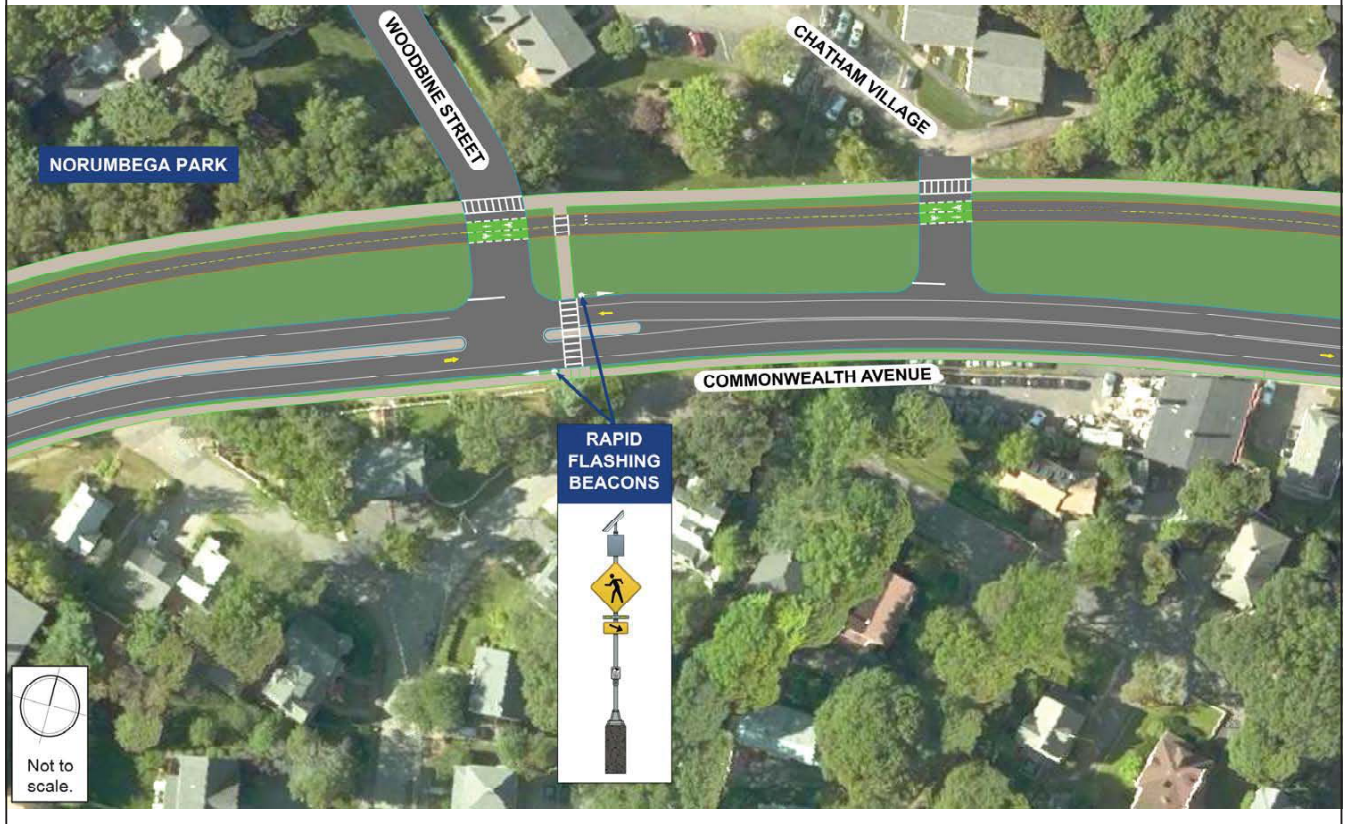
Proposed Concept Marriott to Woodbine Street

Engineers + Planners



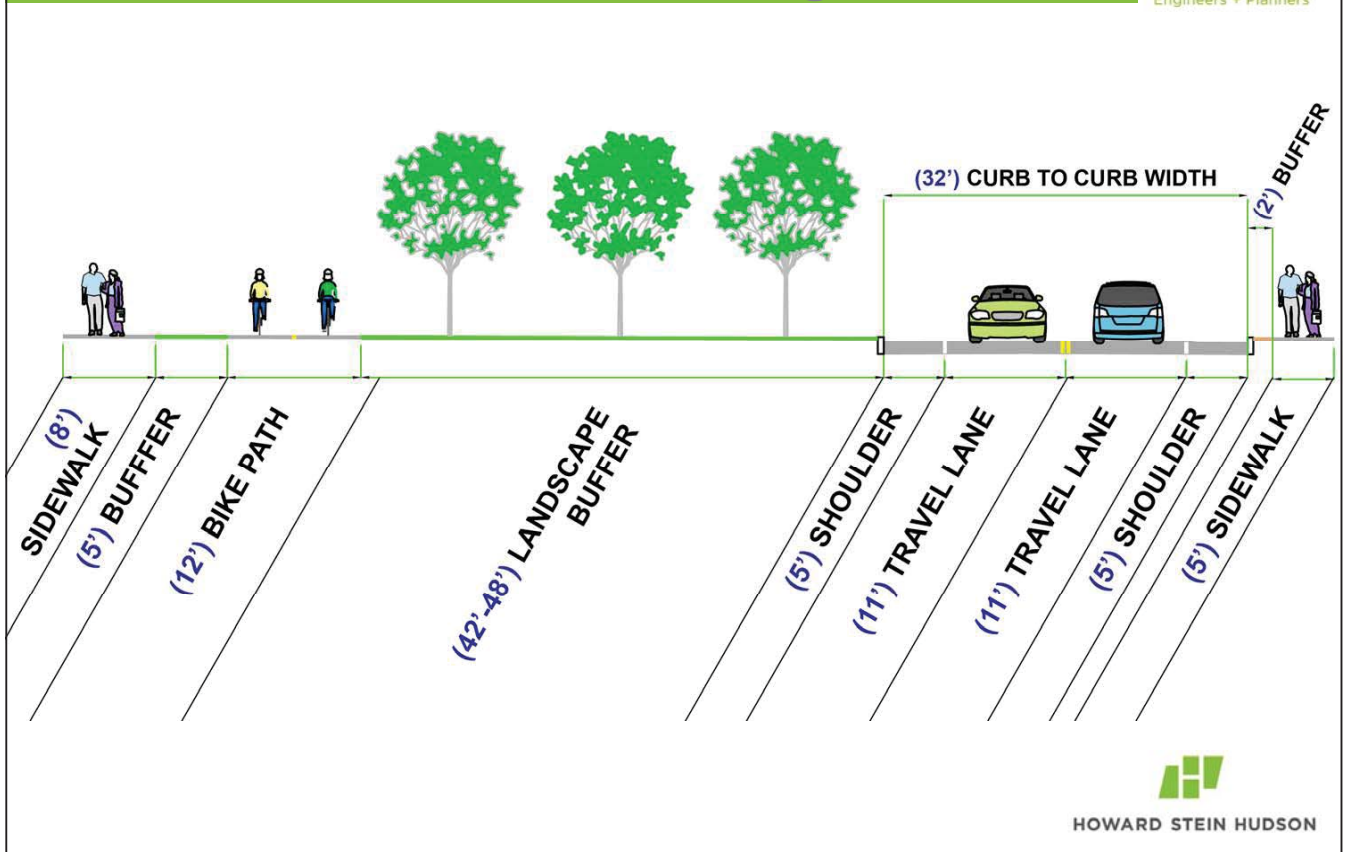
Proposed Concept Woodbine Street to Islington Road

Engineers + Planners



Proposed Concept Woodbine Street to Islington Road

Engineers + Planners



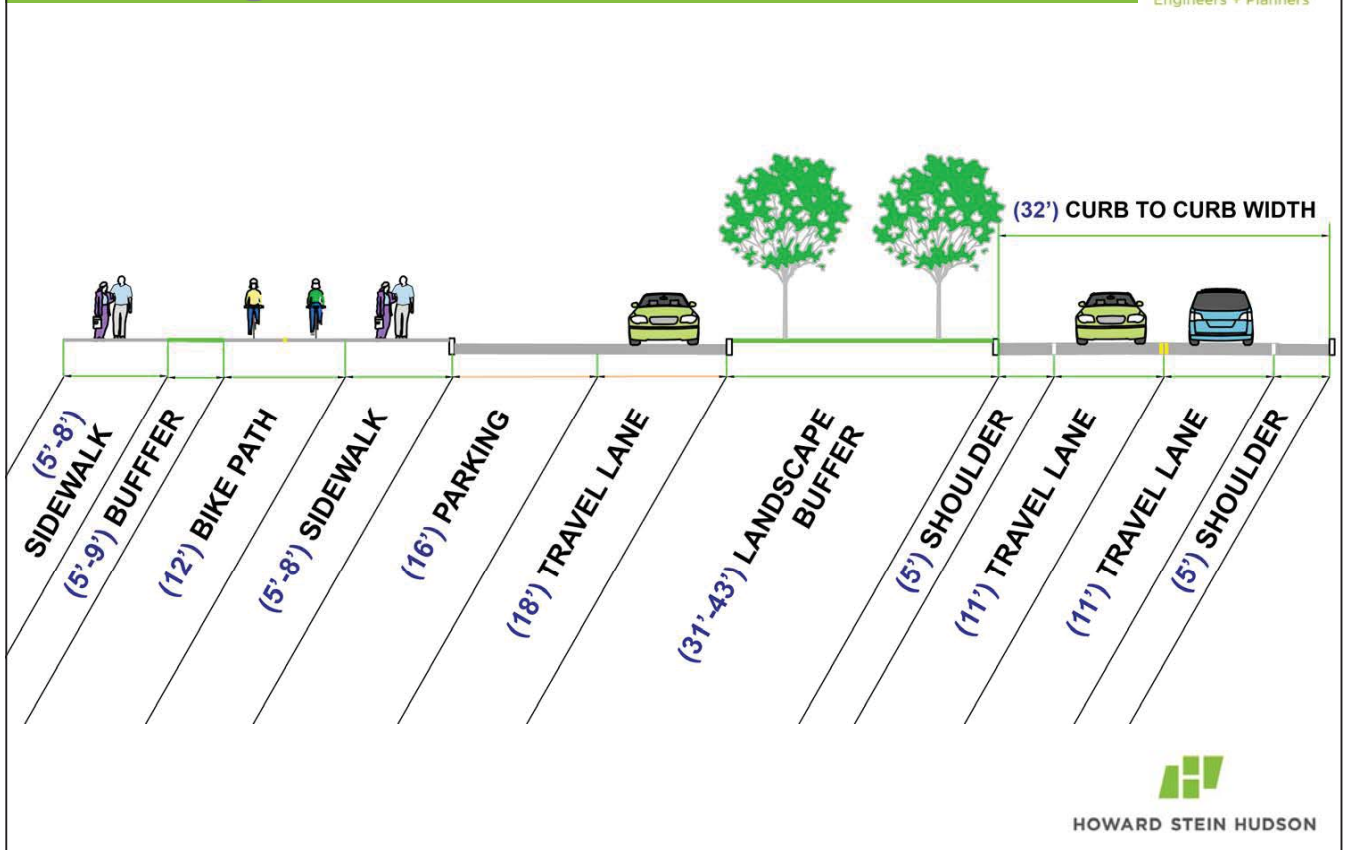
Proposed Concept #1 Islington Road to Ash Street

Engineers + Planners



Proposed Concept #1 Islington Road to Ash Street

Engineers + Planners



Existing Conditions Islington Road to Ash Street

Engineers + Planners



Proposed Concept #1 Islington Road to Ash Street

Engineers + Planners



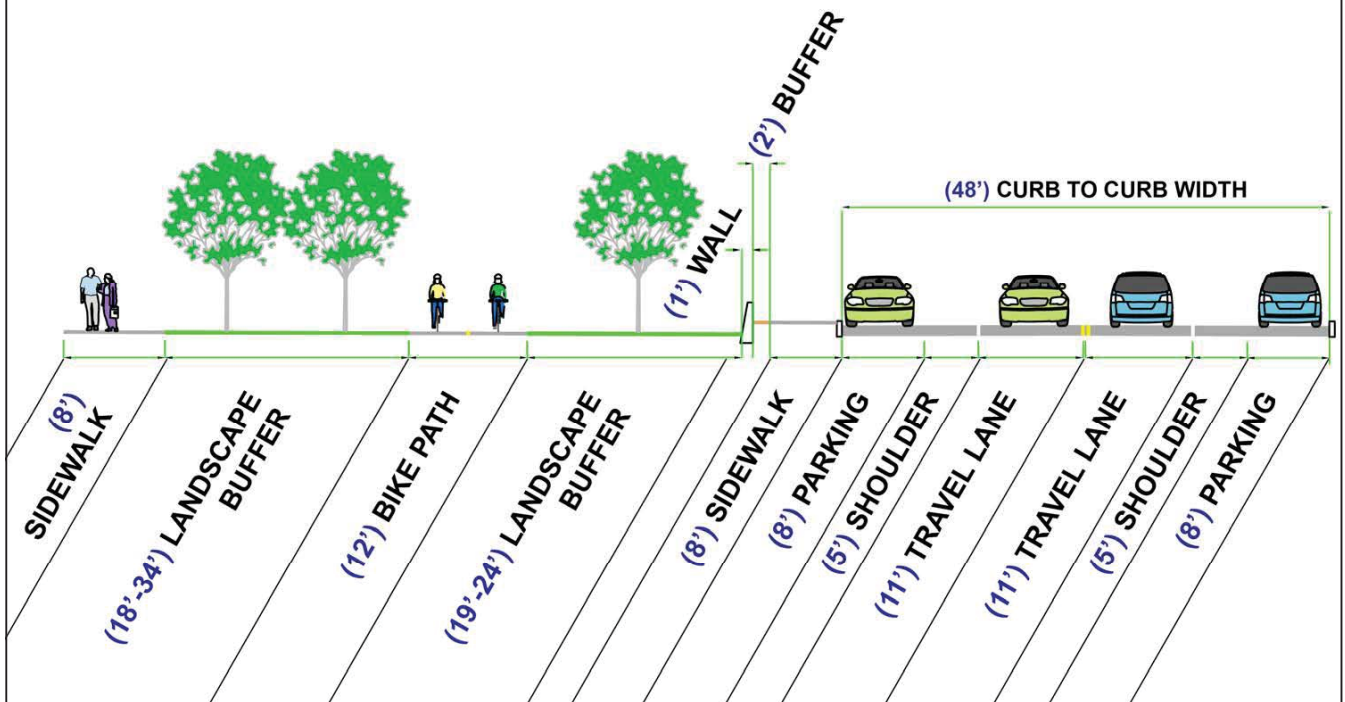
Proposed Concept #2 Islington Road to Ash Street

Engineers + Planners



Proposed Concept #2 Islington Road to Ash Street

Engineers + Planners



Existing Conditions Islington Road to Ash Street

Engineers + Planners



Proposed Concept #2 Islington Road to Ash Street

Engineers + Planners



Next Steps

Engineers + Planners

- Initiate project with MassDOT
- Initiate City-funded design
- Coordinate with Metropolitan Planning Organization



HOWARD STEIN HUDSON

Questions?



HOWARD STEIN HUDSON

Engineers + Planners