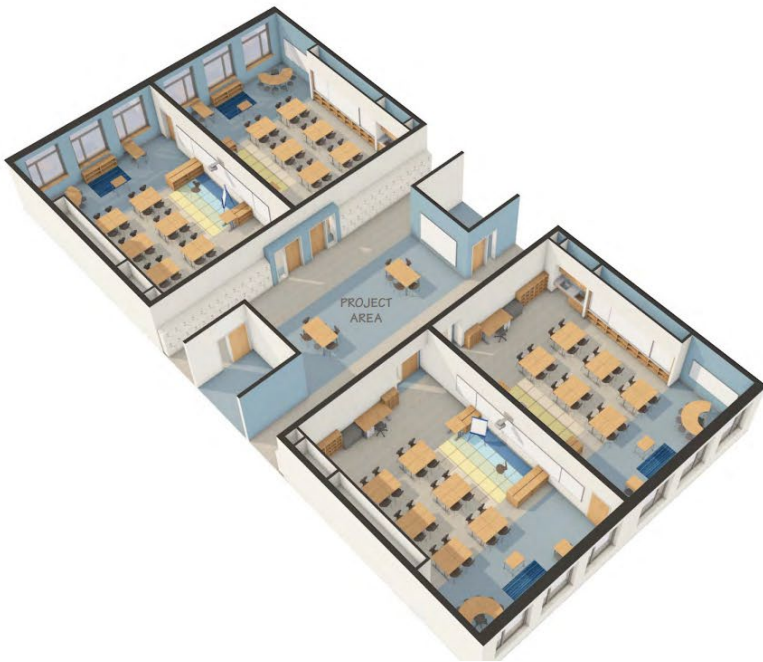


# Countryside School Project



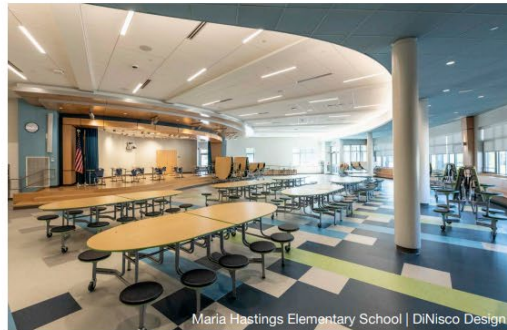
## Envisioned Characteristics | Classroom Neighborhood Project Areas



- Shared project area - extension of the classroom
- Student storage - maximize classroom for instruction
- 1:1 / Small group instruction
- Project based learning
- Universal Design Learning (UDL) opportunities
- Collaborative space



## Envisioned Characteristics | Cafetorium



- Full school assembly space
- Flexible use of platform for performances and music class
- Direct views and access to outdoor play areas
- Available for after school and community use



The Countryside School project is currently in the feasibility design phase in partnership with the Massachusetts School Building Authority, MSBA.

On March 23<sup>rd</sup>, we presented the project to the Conservation Commission who will play an important role on this project for the next few years.

On April 12<sup>th</sup>, we presented an update to the City Council Public Facilities Committee. You can watch the recording of that meeting [here](#).

On April 25<sup>th</sup>, the Countryside School Building Committee voted unanimously to submit the Preferred Schematic Report, PSR, to the MSBA and the link to the recording of that meeting can be found [here](#). The PSR can be found [here](#).

The most significant development from this vote and submission is that the decision has been made that we will be proceeding with new construction as opposed to an addition and renovation of the existing school building. There were many reasons why this decision was made, and they are all outlined in the PSR. Beyond the fact that several codes and laws necessitated new construction for this project, and the fact that new construction was both superior and less expensive, this direction is also in the best interest of the staff, students, and neighborhood for a variety of reasons.

On May 17<sup>th</sup>, the project team will be presenting to the MSBA Facilities Assessment Subcommittee as part of the normal review process with the state.

In the coming months we will continue to work through the feasibility design phase with a focus on developing the site plans, floor plans, massing, and stormwater approach to move towards Site Plan Approval which is anticipated to occur in the fall.

We've still got a tremendous amount of design work left to do, but you can review all project information, presentations, and materials at [countrysideelementaryschoolproject.com](http://countrysideelementaryschoolproject.com).

We anticipate starting construction in the summer of 2025 and completing construction in the summer of 2027.

If you have any questions or comments about this project, you can email us at [countryside@newtonma.gov](mailto:countryside@newtonma.gov). The next Countryside School Building Committee and Community meeting is on Tuesday, May 16<sup>th</sup> at 6:00pm and you can register for the meeting by clicking [here](#).

## Lincoln-Eliot School Project



The view above is what staff, students, and parents will see as they enter the school. The library has become the heart of the school, with great sight lines, ample natural light, and a welcoming feel.



**DESIGN OPTION STUDIES**



You'll see in the above image that we have been working with the staff, community, building committee, and design review committee to study a wide array of potential exterior design details and concepts.

The Lincoln-Eliot School project has now entered the final design phase. Our focus over the past few months has been refining the design of the addition and several interior spaces in the existing building and adding details to the interior spaces and the site features. We've also begun to work on the interior materials, colors, and finishes which is always a fun step as it begins to breathe life into the spaces. With our building massing now firmly established, we have begun to study and select the exterior building materials, colors, and finishes for the addition. We are also working with the various user groups to further develop our fixtures, furnishings, equipment, and information technology systems. The project is on track to begin selective demolition in the fall of 2023, and complete construction in the summer of 2025.

To watch the recording of the latest presentation please click [here](#). To view the presentation itself, you may click [here](#).

If you have any questions or comments about this project, you can email us at [lincolneliot@newtonma.gov](mailto:lincolneliot@newtonma.gov), or you can check out our project website at [lincolneliot-necp-projects.com](http://lincolneliot-necp-projects.com).

## Franklin School Project



The Franklin School staff working hard to help plan for the future of the Franklin School.

## New School Design Patterns

## Cafetorium Multi-Purpose Space



So many possibilities for the Franklin School.

## New School Design Patterns

## Heart of the School



What do you think the “heart” of Franklin School should be? The cafetorium? The library? Maybe the art room or music?

## New School Design Patterns

## Flexible Furniture



Braintree East Middle School - MDS



Arak Park Elementary - Sydney



VS Furniture



## New School Design Patterns

## Agile Classrooms



Ivan Smith Elementary - Tappe Architects



MLK Lower School - Perkins Eastman



Anyone who has seen some of the spaces at Franklin can just imagine what things could be like with classrooms like the ones shown above.

With the successful outcome of the override the Franklin School Project is now moving forward. We are very appreciative of the support from the community, and we recognize the trust that been placed in us to be great stewards of the funds and to deliver an incredible project for the community.

On March 21<sup>st</sup>, we reengaged with the Franklin School Building and Design Review Committees and Community to recap the work we did last fall. That meeting recording can be seen [here](#).

On May 4<sup>th</sup>, we presented the draft design enrollment and space summary to the Franklin School Building Committee and Community. You can watch the meeting recording [here](#). The design enrollment is the number of students the school will be designed to accommodate. The space program is a document that lists the types, quantities, and sizes of every space in the building. Currently, we are recommending a school with a design enrollment of 396-414 students. The design enrollment and space summary will be submitted to the School Committee for their review on June 12<sup>th</sup>, and a vote on June 20<sup>th</sup>. These documents will have no impact on the decision of whether the project will be an additional and renovation of the current facility, or new construction. That decision has not been made and will not occur for a while.

We are also in the process of soliciting and onboarding an Owner's Project Manager, OPM. We received the proposals on May 4<sup>th</sup>, and we will be working with the Designer Selection Committee to find the best OPM for the Franklin School Project over the next 4-6 weeks.

The next meeting of the Franklin School Building and Design Review Committees and Community will be on July 6<sup>th</sup>. You can register in advance for this meeting by clicking [here](#).

The second Franklin School staff visioning session will be on June 7<sup>th</sup>, and we can't wait to continue to work with the incredible educators to help make sure they set the stage for the wonderful project to come.

We anticipate starting construction in the summer of 2025 and completing construction in the summer of 2027.

To review the presentation, project information, and materials you can go to our project website [here](#). If you have any questions or comments about this project, you can email us at [franklin@newtonma.gov](mailto:franklin@newtonma.gov).



## Horace Mann School Project



The above image shows some of the notes from the Horace Mann School staff visioning session.  
Ground Floor Cafetorium Lobby



Connection to Cafetorium and Lobby Below



Mayor Fuller recently stated, "We have worked collaboratively with the Newton Retirement Board to increase the base pension on which retiree COLAs are calculated and extend our full-funding date by one additional year to create a sustainable pathway to fully fund our pension system by August 2031; this collaboration in turn has created flexibility to fund the \$23 million Horace Mann Elementary School addition/renovation."

The increase in the COLAs, or cost of living adjustments, for our retirees is an action that requires City Council approval. The City Council will be deliberating on this issue along with the rest of the city budget over the next 4-6 weeks. Should the City Council approve the COLA increase, the stage will be set for Newton's independent Retirement Board to extend our full-funding date by an additional year which will in turn provide the budgetary flexibility needed to move the Horace Mann School Project forward.

If the City Council approves the COLAs, the Retirement Board can then finalize the plans that extend the funding schedule such that the Horace Mann Project can move forward. As soon as this happens, we will reengage with the Horace Mann Building Committee and Community and move forward as quickly as possible.

To learn more about this project you check out our website [here](#). If you have any questions or comments about this project, you can email us at [horacemann@newtonma.gov](mailto:horacemann@newtonma.gov).

# Newton Center for Active Living, NewCAL, Project



Lobby View Towards Reception



Walnut Street and Highland Avenue

**Roof Assembly @ Gym**  
 Asphalt Shingle Roof  
 Vapor Barrier  
 3/4" Roof sheathing  
 6" Rigid XPS Insulation, continuous (R-50)  
 2x Wood Framing with Batt Insulation  
 Structural Wood Beam system

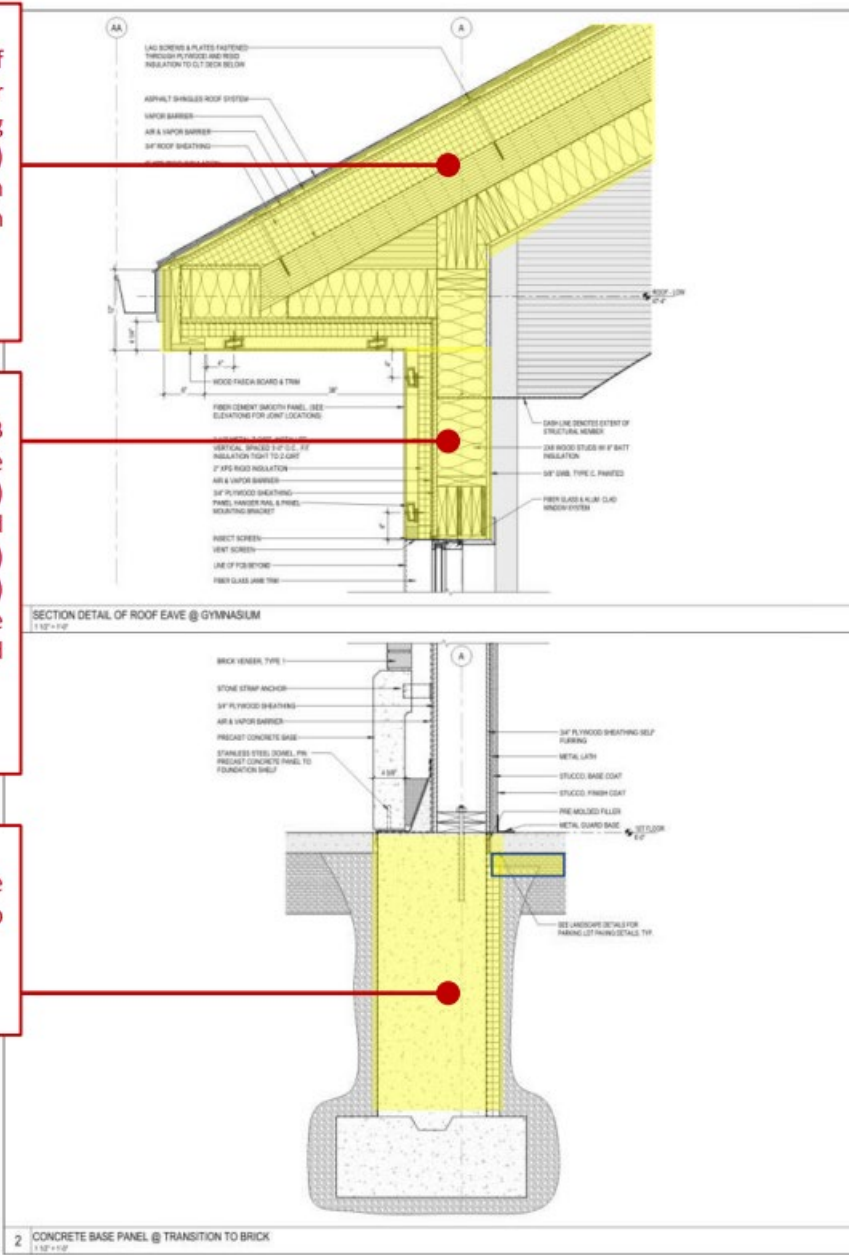
**Assembly U-Value**  
**0.02**

**Exterior Wall @ Fiber Cement Cladding**  
 5/8" GWB  
 2x8 Wood Frame  
 8" Batt Insulation (R-21)  
 3/4" Sheathing Board  
 Air Vapor Barrier (Self Adhered)  
 2" XPS Rigid Insulation, continuous (R-10)  
 Air Space  
 Fiber Cement Panel Board

**Assembly U-Value**  
**0.035**

**Foundation and Slab on Grade**  
 Continuous Insulation (R-10) 24" wide  
 along the perimeter of slab

**F-Factor**  
**0.054**



The NewCAL project has entered the final design phase. As you can see from the above image, we are very deep into the design details to help make the community collective vision become a reality. The interior and exterior design is essentially unchanged at this point, and our focus is almost exclusively focused on the detailed design and specifications needed to prepare to bid the project this fall.

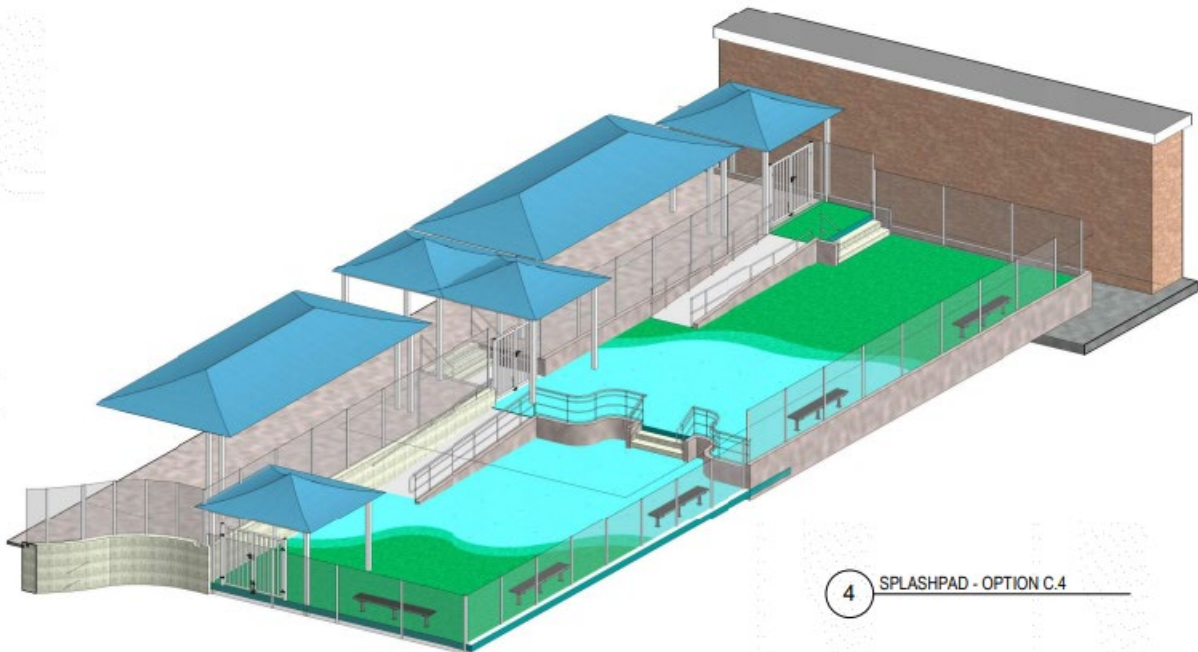
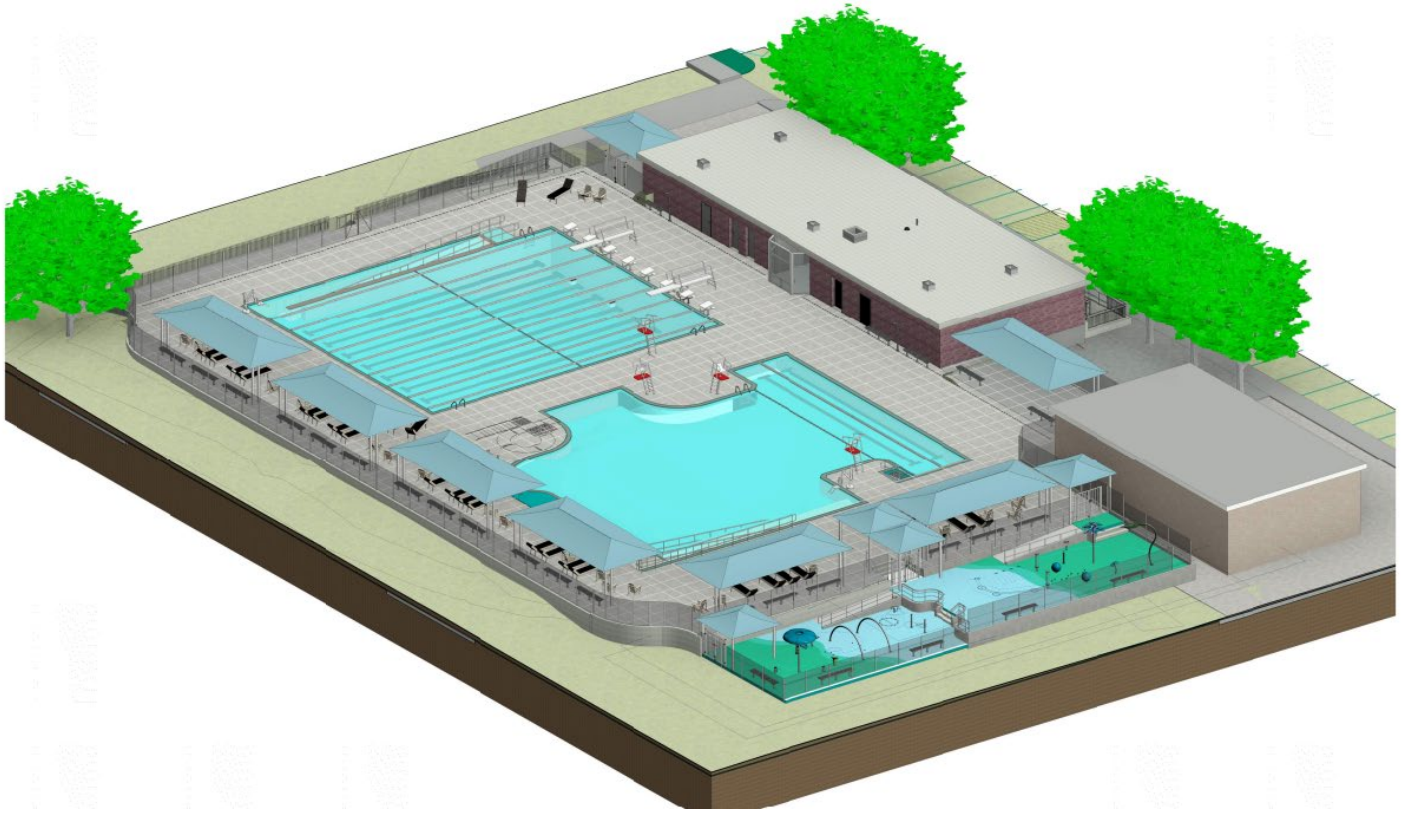
We are on track to begin selective historical salvage later this spring, and demolition of the existing building early in the fall. Construction is expected to be complete in the summer or fall of 2024.

Simultaneously we are working on the specifications and selections for the furnishings, fixtures, and equipment, as well as the information technology and hearing assist systems for the facility.

Additional project info can be found at [newcal.projects.nv5.com](http://newcal.projects.nv5.com). If you have any questions or comments about this project, you can email us at [newcal@newtonma.gov](mailto:newcal@newtonma.gov). To watch a recording of

the April 20<sup>th</sup> NewCAL community meeting, please click [here](#). The next NewCAL community meeting will be on Thursday, May 18<sup>th</sup> at 6:30pm and you can join the meeting by clicking [here](#).

## Gath Pool Project



The Gath Pool project is now in the schematic design phase. The latest two-pool design can be seen above. We are currently working collaboratively with the various stakeholders to refine the design and

begin to work on the pool support systems, furnishings, equipment, and fixtures. We appreciate the collaboration with Mary and Scott Pohlman from the Newton Bluefish as they help us make the project the best possible version of itself for all users of the facility.

The new pool design and all previous project materials can be viewed at <http://www.newtonma.gov/gathpoolproject>.

Members of the Design Review Committee at their March 29<sup>th</sup> meeting voted unanimously to approve the site plan and schematic design for the project. You can watch the recording from that meeting by clicking [here](#).

The project funds have been approved by Mayor Fuller and the Community Preservation Committee. The City Council will be voting over the next 4 weeks on the site plan, schematic design, and the funds needed to complete the project.

Following the approval of the City Council, we will be moving quickly to advance the design so that we may start construction immediately after the 2023 swim season concludes, with our goal of opening the new pool for the start of the 2024 swim season.

If you have any questions or comments about this project, you can email us at [gathpool@newtonma.gov](mailto:gathpool@newtonma.gov).

## Ward and Underwood Initiative – Facility and Enrollment Study



Ward Elementary School above



Underwood Elementary School above

In fall 2022, the Newton Public Schools established a task force and contracted with a consultant to address facility, educational, and enrollment challenges at Underwood and Ward elementary schools.



As documented by the previous work of a prior task force, both Underwood and Ward occupy buildings that are nearly 100 years old and both schools are experiencing enrollment declines that are impacting the educational experience of students.

Newton Public Schools initiated the Underwood and Ward Facility and Enrollment Study to look at the future of the two schools. Mayor Fuller allocated \$100,000 in ARPA funds to hire consulting firm to work with a task force to identify options to address facility, educational and enrollment challenges. The Public Buildings Department worked with the Designer Selection Committee, DSC, to publicly advertise and solicit proposals from various firms to assist with this initiative. [Perkins Eastman](#) was unanimously recommended by the DSC and subsequently approved by Mayor Fuller.

A task force made up of parents, principals, educators, our consultants, School Committee and City Council members, and staff from the City and Newton Public Schools met for the first time on April 25<sup>th</sup> to begin the discussion by working to develop the mission statement and guiding principles for the initiative.

To learn more about this initiative, follow along with our efforts, and keep up on meeting dates and agendas, please click [here](#).