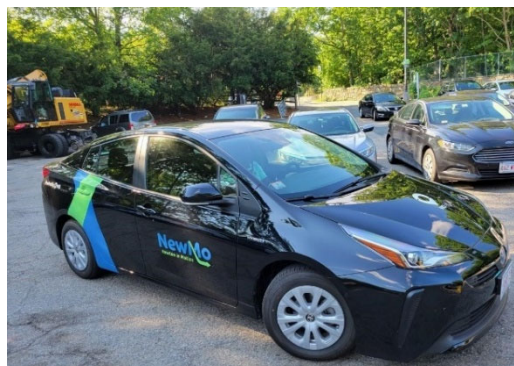


NEWMO MEDICAL DESTINATIONS



NewMo can take seniors anywhere within the City of Newton **AND only** to the designated addresses listed below.

When you call the call center to request a ride, at 617-655-8019, please give the agent the address of your destination, not the name of your doctor.

Unfortunately, NewMo cannot take seniors to the main Boston hospitals.

| | |
|--|--|
| <p>Walnut Street, Wellesley (which includes several doctor offices and medical facilities)</p> | <p>850 Boylston Street, Chestnut Hill (Brigham and Women’s Health Care, etc.)</p> |
| <p>1-54 Washington Street, Wellesley (which includes several facilities)</p> | <p>1244 Boylston Street, Chestnut Hill (which includes several doctor offices and medical facilities)</p> |
| <p>173 Worcester Street, Wellesley (includes Newton-Wellesley Hospital Endocrinology Center and more)</p> | <p>VA Hospital, West Roxbury 1400 VFW Parkway</p> <p>VA Hospital, Jamaica Plain 150 South Huntington Ave.</p> |
| <p>195 Worcester Street, Wellesley (includes Newton-Wellesley Primary Care)</p> | <p>Faulkner Hospital 1153 Centre Street, Jamaica Plain</p> |
| <p>230 Worcester Street, Wellesley (Harvard Vanguard, Atrius, etc.)</p> | <p>St. Elizabeth’s Hospital 736 Cambridge Street, (Cambridge Street, Brighton)</p> |
| <p>New England Baptist Hospital Outpatient Care Center (830 Boylston Street, Chestnut Hill)</p> | <p><i>To pre-schedule rides to medical appointments, call the call center, at 617-655-8019, the day before your appointment or up to five days in advance.</i></p> |