

Detailed Boston Marathon Course Map

BAA Boston Marathon Co...

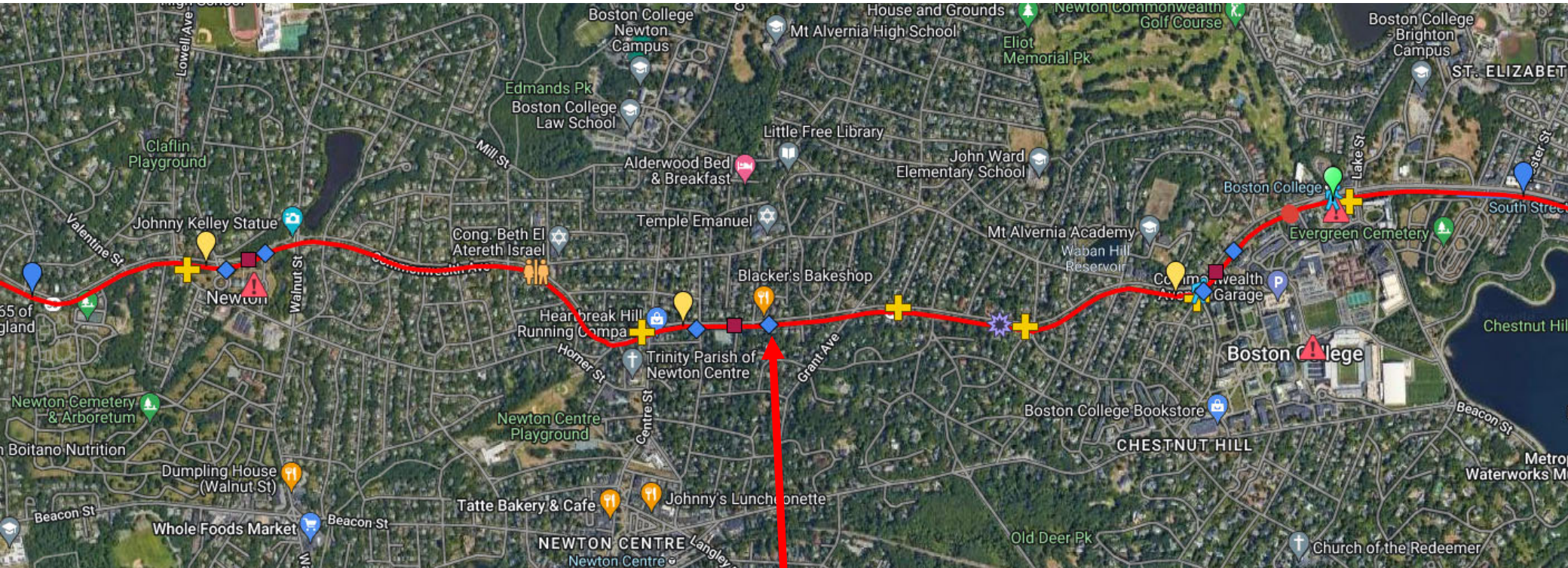
Everything that is on the Marathon course is here... almost! It's a work in progress, but I am continuously updating it.
20,344 views
Published on March 29
[SHARE](#)

- Mile Markers**
 - 1K
 - Mile 1
 - 2K
 - 3K
 - ... 39 more
- Medical Flags**
 - Medical Station 1
 - Medical Station 2
 - Medical Station 3
 - Medical Station 4
 - ... 22 more
- Shelter Locations**
 - Hopkinton High School
 - Hopkinton Middle School
 - Center School
 - Faith Community Church of Hopkinton
 - ... 13 more
- Course Infrastructure**

This map was created by a user. [Learn how to create your own.](#)

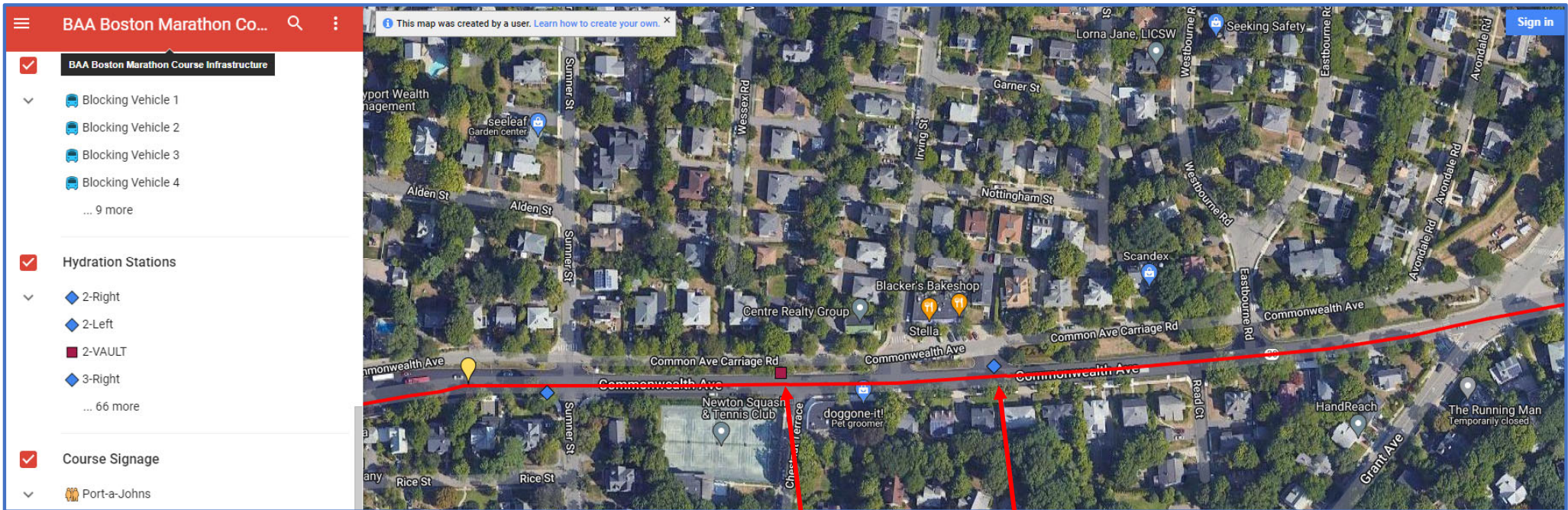
Google My Maps

Newton City Hall to Boston College Details



Location of Incident

Sumner Street to Grant Ave Section Map with Hydration Station Location



"Vault"
Supply Depot

Hydration
Station

Dispatch From BAA

Request from ROC for Newton PD to help with crowd control (infringing) on race course at Hydration Station 530 Commonwealth Ave, cross street Sumner Street.

Newton PD assisted.

530 Commonwealth Ave, Newton, MA

Units request Newton PD for crowd control. Units in route.

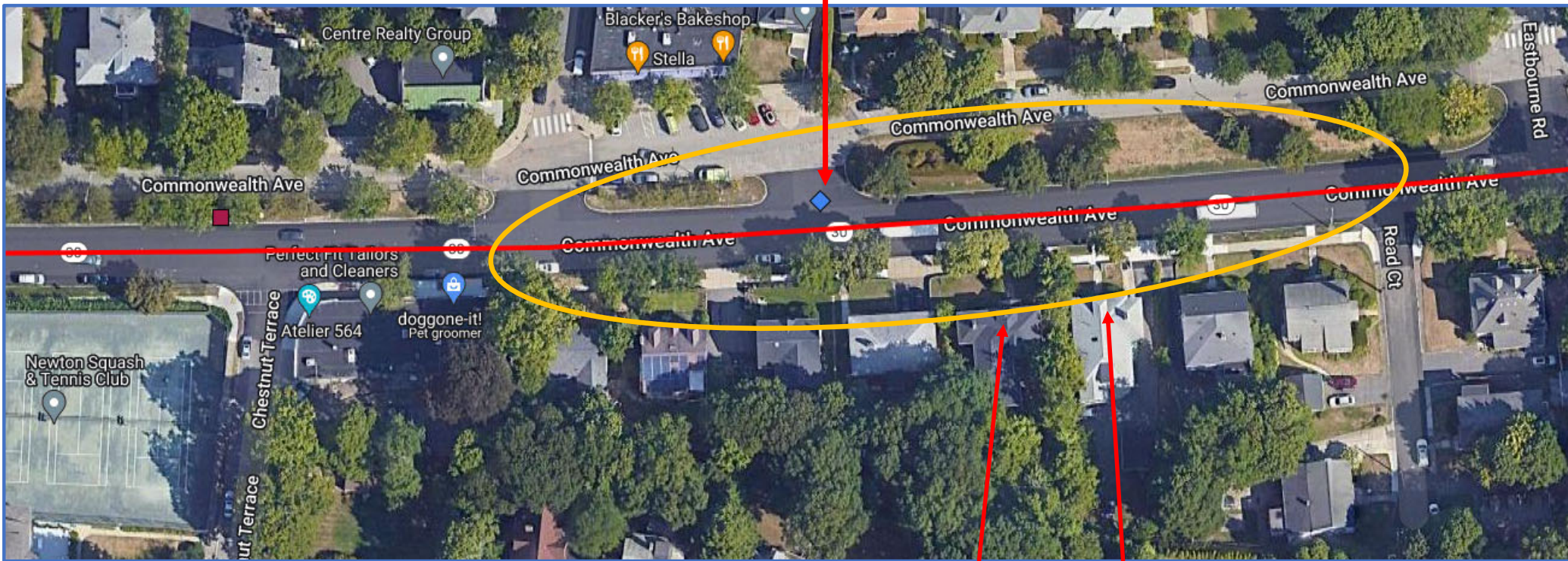
Less

1420 Hours: Units arrived and used their bikes to block the crowd from the raceway. They will remain in place till crowds dissipate.

534 Commonwealth Ave Newton

Detail Map of 530-534 Comm Ave Area

Hydration Station



534 Comm Ave

530 Comm Ave