



# GATH POOL PROJECT

City of Newton  
Programs & Services Committee  
Public Facilities Committee  
March 22, 2023

## **POOL PROJECT GOALS AND OBJECTIVES**

- Maintain and Activate More Green Space Around the Pool
- Improve Entry and Arrival Sequence
- Improve Experience for User Groups, Including Recreational and Competitive Swim
- Universal Access To Facility and All Pools
- Provide Leisure and Play Areas for Pool Patrons
- Create Flexible Pool Spaces For Simultaneous use by Different User Groups
- Improve Operating Productivity by Eliminating Water Loss and Increasing Energy Efficiency
- Evaluate Bathhouse to Improve Overall Guest Experience
- Address Code, Accessibility, and Interior Upgrades
- Provide Improved Opportunities for Shade Structures and Sunbathing Areas

# PREVIOUS COMMUNITY AND FOCUS GROUP MEETINGS TO DATE

## Public and Commission Meetings

- Multiple Community-Wide Public Meetings
- Multiple Parks & Recreation Commission Public Hearings
- Multiple Commission on Disabilities Updates
- Conservation Commission Introduction Meeting
- Multiple Community Preservation Committee Meetings
- Design Review Commission
- Board of Health
- Fire Department

## Focus Groups

- Friends of Albemarle:
- Newton Bluefish:
- LGBTQ+:
- 55+ Recreation Group
- Disability Community
- Summer Camp Groups

## BATHHOUSE AND POOL FOCUS GROUP FEEDBACK

- Restrooms:
  - Grab bars need to be clearly and carefully laid out
  - Doors on shower stalls – No curtains
- Wheelchair:
  - Available for use from changing room to pool
  - Rolls and maneuvers easily
  - Safety belt
  - Can get wet
- Changing room:
  - Adjustable bench/table
  - Pool-ready wheelchair available for use
- Pool Lift:
  - Ready for independent use
  - Ease of use by single person
  - Proper staff training
  - Readily available equipment w/o locks or other barriers (batteries and other ancillary equipment)
- Storage:
  - For pool wheelchairs on site
  - For guest personal chairs and other equipment
- Splash pad:
  - Waterproof chair for use in the splash pad (Electric/Non-electric)
  - Direct ramps that lead directly to the splash pad – no turns
- Water Slide:
  - Provide options for people with disabilities
  - Place on Community Pool side
- Connected/separate pools:
  - Prefer multiple means of accessible entry for all swim areas. Makes connector advantageous (1 lift, 1 ramp) with easier transfer between pools





ARCHITECT  
**bna**  
 Benjamin Brubaker + Architects, Inc.  
 6 Chandler Center Street, Suite 300  
 Boston, MA 02215  
 (617) 261-0000

PROJECT NAME  
**Gath Memorial  
 Pool Improvements**  
 228 Silverdale Pk  
 Newton, MA 02459

CLIENT  
**City of Newton**  
 228 Commonwealth Ave.  
 Newton Center, MA 02459

PROJECT YEAR

REVISIONS

NO.	DATE	DESCRIPTION

DRAWING TITLE  
**OVERALL SITE**

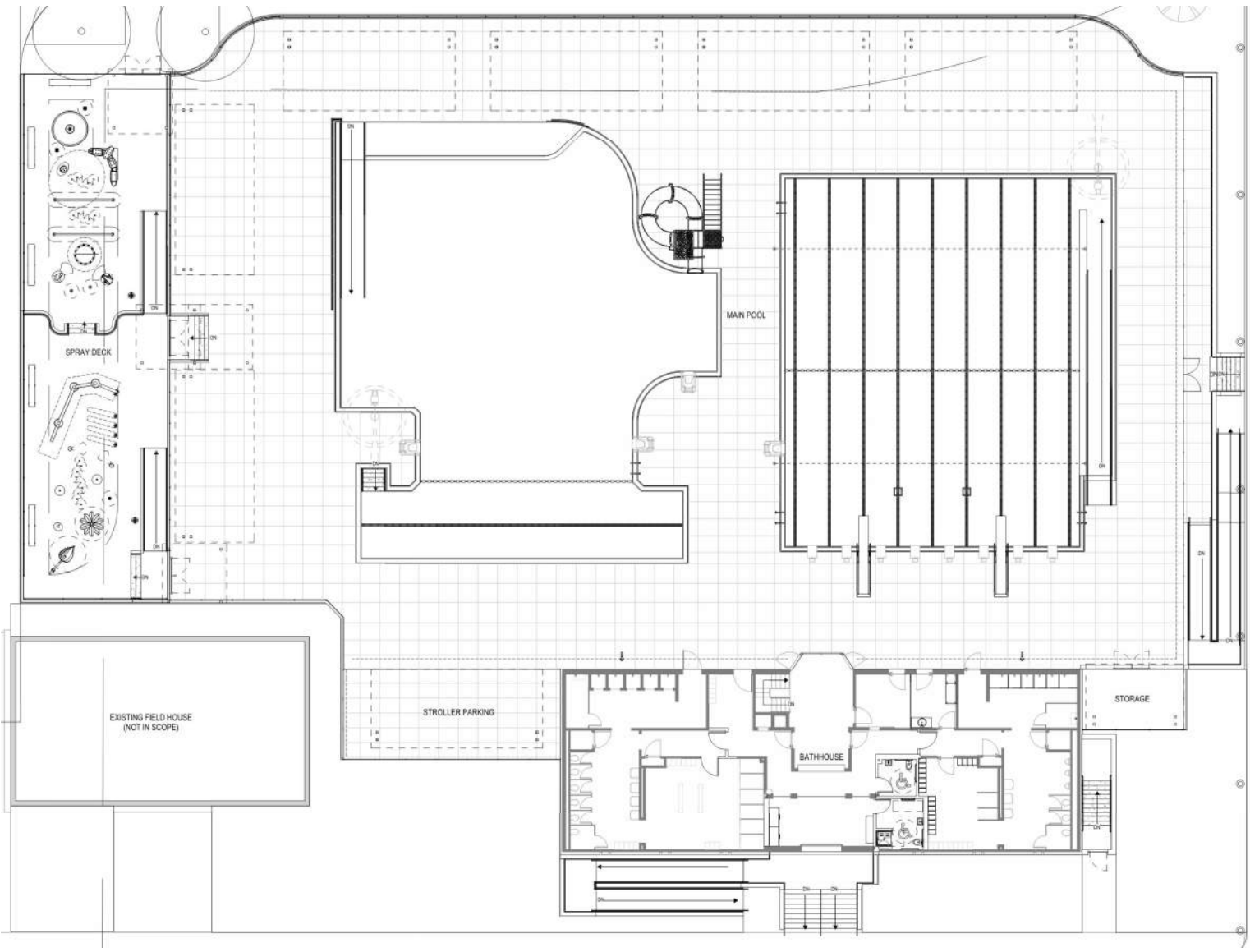
DRAWING INFORMATION

Scale:	
Date:	
Drawn by:	
Checked by:	

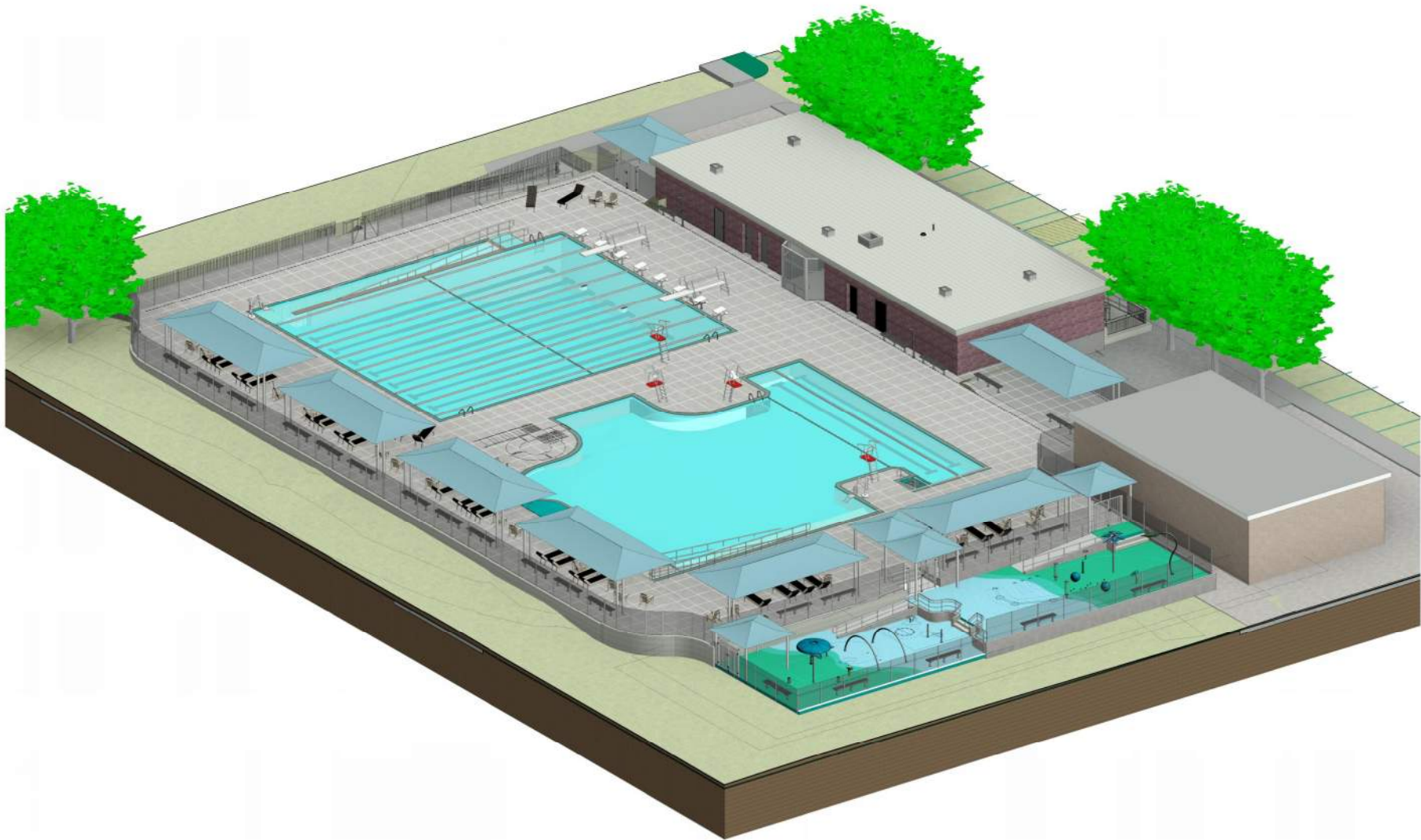
DRAWING NUMBER  
**A100**

Client: City of Newton, Newton Center, MA  
 Project: Gath Memorial Pool Improvements  
 Date: 1/21/14  
 Scale: 1/8" = 1'-0"  
 Drawing Number: A100













1 BATHHOUSE PLAN  
1/4" = 1'-0"

C:\Users\jsh17\OneDrive\Public\Pool\Bathhouse\2024\14  
 10/22/2024 2:28:29 PM  
 MS

ARCHITECT  
**bh+a**  
 Benjamin Henkle + Architects, Inc.  
 27 Central Castle Street, Suite 100  
 Boston, MA 02210  
 (617) 552-6600

PROJECT NAME  
**Gath Memorial  
 Pool Improvements**  
 228 Memorial Hill  
 Newton, MA 02459

CLIENT  
**City of Newton**  
 1000 Commonwealth Ave.  
 Newton Center, MA 02459

REVISIONS

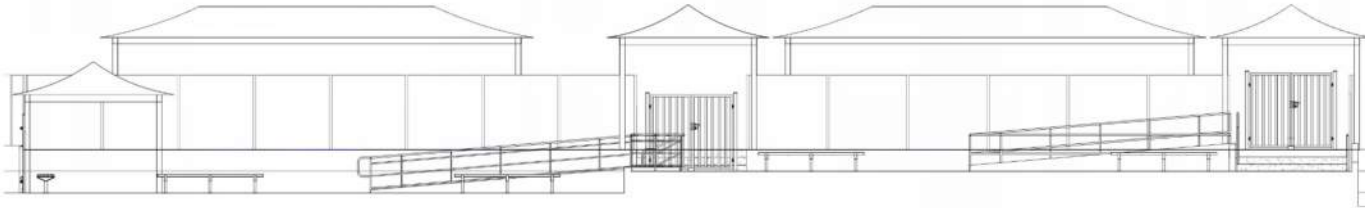
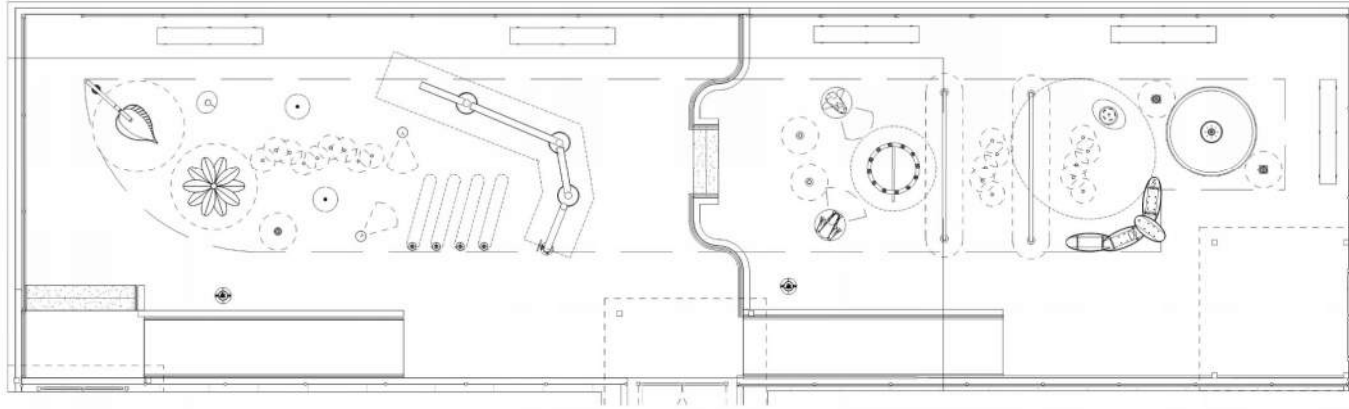
NO.	DATE	DESCRIPTION

DRAWING TITLE  
**BATHHOUSE PLAN**

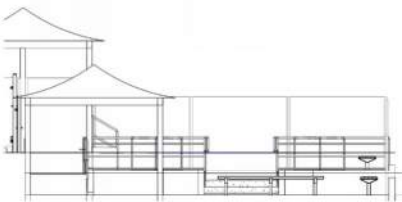
DRAWING BY OR DATE


DATE TO BE

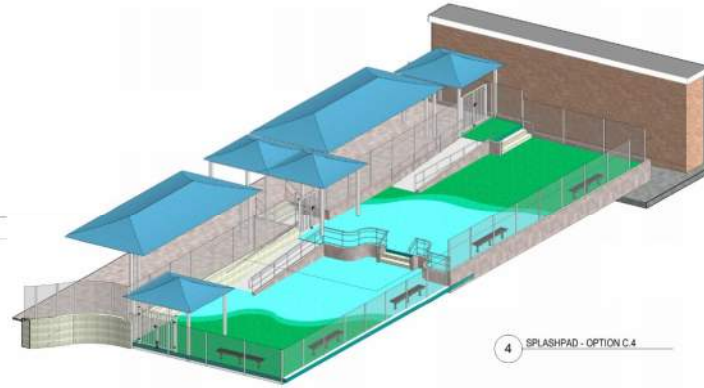

DRAWING NUMBER  
**A102**



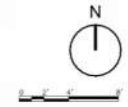
2 SPRAY DECK ELEVATION C.4 - WEST EAST  
1/8" = 1'-0"



3 SPRAY DECK ELEVATION C.4 - NORTH SOUTH  
1/8" = 1'-0"



4 SPLASHPAD - OPTION C.4



ARCHITECT  
**bh+a**  
 Benjamin Hendler + Architects, Inc.  
 37 Central Expressway, Suite 300  
 Boston, MA 02211  
 (617) 552-6600

PROJECT NAME  
**Gath Memorial  
 Pool Improvements**

CLIENT  
**City of Newton**  
 1000 Commonwealth Ave.  
 Newton Centre, MA 02459

PROJECT TEAM

REVISIONS


DRAWING TITLE  
**SPRAY DECK -  
 OPTION 3 PLAN  
 AND SECTION**

DRAWING BY ORIGINATOR

Issue Date	
Issue #	
Issue Description	

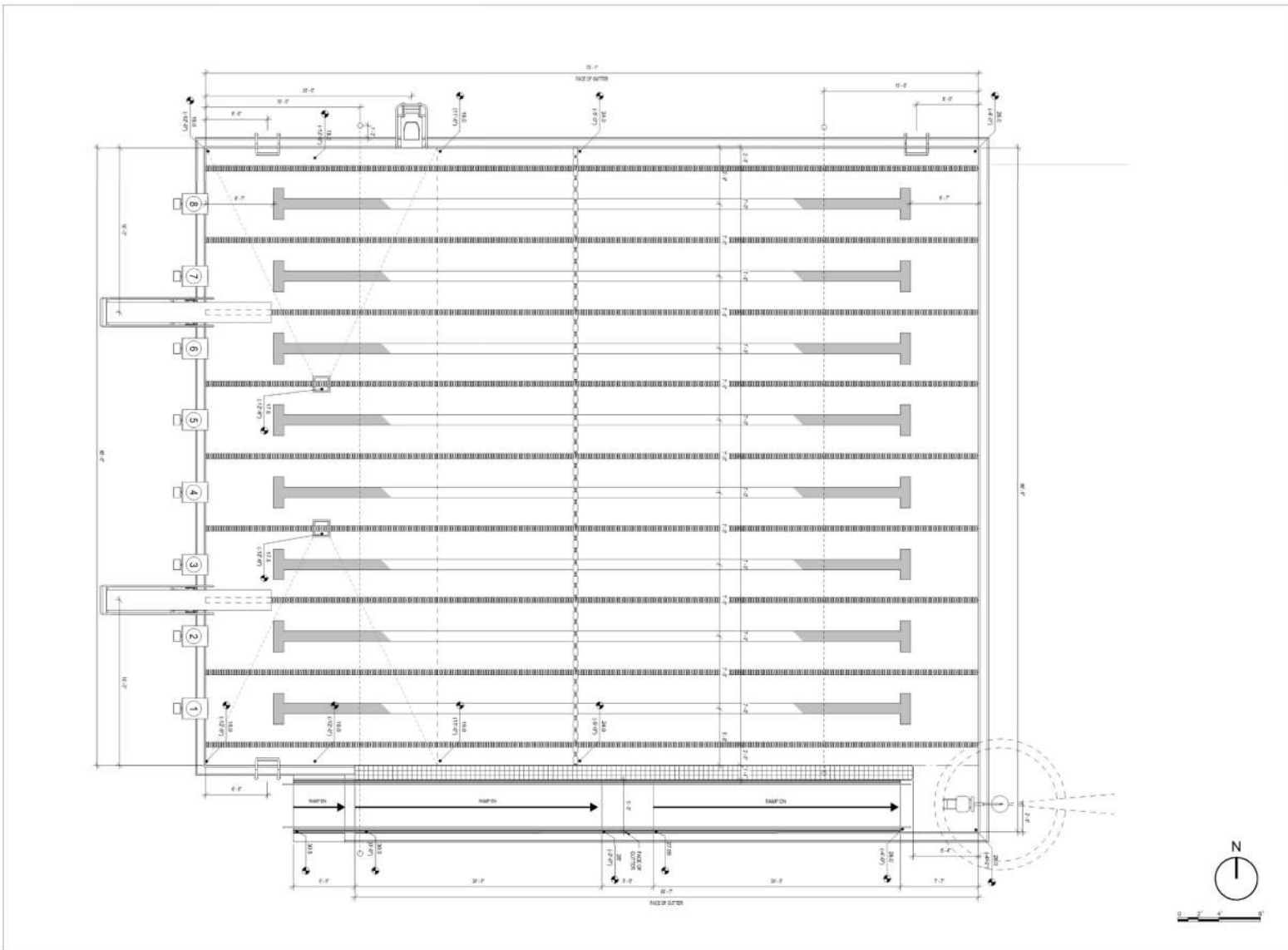
DRAWING NUMBER

**A821**

C:\Users\mhendler\OneDrive\Documents\Projects\Gath Memorial Pool Improvements\A821.dwg  
 2021/01/21/10:47 AM  
 M.S.



City of Newton  
 20230215.02.00  
 MS



ARCHITECT  
**bh+a**  
 Benjamin Hendler + Architects, Inc.  
 27 Central Castle Street, Suite 300  
 Boston, MA 02210  
 (617) 552-6600

PROJECT NAME  
**Gath Memorial  
 Pool Improvements**

CLIENT  
**City of Newton**  
 200 Commonwealth Ave.  
 Newton Center, MA 02459

PROJECT TEAM

REVISIONS

NO.	DATE	DESCRIPTION

DRAWING TITLE  
**LAP POOL PLAN**

DRAWING BY ORIENTATION

Issue Date: \_\_\_\_\_  
 By: \_\_\_\_\_  
 Date: \_\_\_\_\_  
 Scale: \_\_\_\_\_  
 Drawing No.: \_\_\_\_\_

DRAWING NUMBER  
**A801**

Copyright © 2013 bh+a, Inc. V2.1



## Pool Details



Ramp Access to Lap Lanes



Ramp Access at Zero Depth Entry

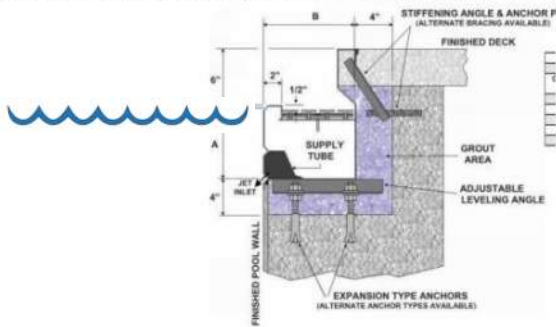


MAAB/ADA Compliant Pool Lift

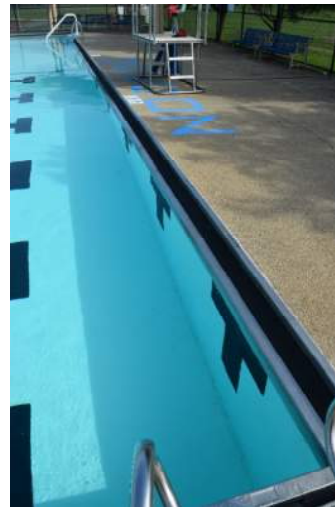
# Pool Details

## Pool Gutter

The pool gutter will be similar to the current gutter. A stainless steel, semi-recessed design.



- Full surface skimming around 100% of the pool.
- No splash back at end walls.
- Racing line anchors are recessed flush into the face of the gutter

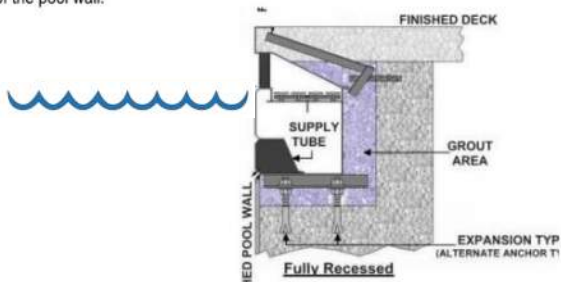


Existing Open Gutter



8 Equal Racing Lanes

End Wall Option: At some pools we have maintained the semi-recessed design profile and added a deck extension to create fully recessed gutter at the ends of the racing lanes. The pool deck is now flush with the face of the pool wall.



Typical Starting Blocks



Proposed Diving Board

# Code Standards

## 105 CMR 435 -Department of Public Health (Including Proposed Revisions)

### Floor Slope and Pool Depth

#### 435.110: Pool Slopes and Dimensions

(1A) The minimum depth of water in swimming pools to be used for swimming purposes shall be not less than at least three feet. In any part of the a pool less than five feet in depth, slopes in the pool floor shall remain constant and shall not exceed one foot vertical in 12 feet horizontal. Exception may be made by the Board of Health for pools built principally for instruction, or in a recessed area of the main swimming pool where the pool is of any irregular shape, such as the leg of a "T", "L", or "Z".

(2B) In special purpose pools, the maximum operational water depth shall be four feet measured from the waterline. The maximum depth of any seat or bench shall be two feet measured from the waterline.

#### 435.150: Diving

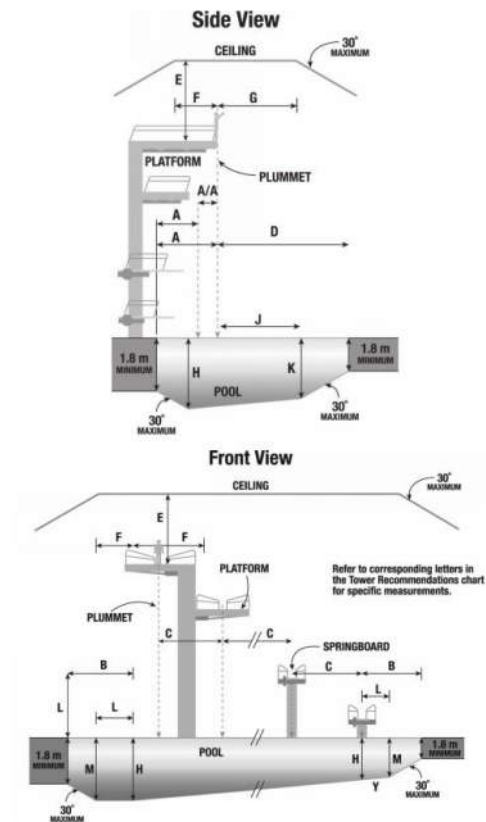
(4D) Diving areas approved for competitive diving shall be in compliance with the standards of the Federation Internationale DeNation Ameteur (FINA), U.S. Diving, Inc., or the National College Athletic Association (NCAA).

(5E) Platforms and diving equipment which are one meter three feet or higher shall be protected with guard rails. The required guard rails shall extend at least 30 inches above the diving board and extend to the edge of the pool wall. All platform or diving equipment higher than one meter shall have guard rails which extend at least 36 inches above the diving board and extend to the edge of the pool wall.

(F) Starting blocks shall be restricted to competitive swimming or swimmer training only. When starting blocks are not in use, they shall have a fitted cover with an affixed "Caution" and/or "Keep-Off" label.

## NCAA Swimming & Diving (For Diving Board Requirements)

- Water Depth
- Distance to Side Wall
- Distance between Boards
- Floor Slope Below Board





## US Swimming

103.1

**ARTICLE 103  
FACILITIES STANDARDS**

1

### 103.1 DEFINITIONS

- .1 **/M/** = Indicates mandatory requirement for all competition.
- .2 **/NC/** = Except as noted otherwise, indicates mandatory requirement for **USA Swimming Championships and International Competition**.
- .3 **/LSC/** = Predicated on facility availability, LSCs may waive strict compliance with these requirements in sanctioning local competition.
- .4 Where dimensions are given, the dimension listed first shall govern, and dimensions given in parenthesis are for reference only.

### 103.2 WATER DEPTH

- .1 **/NC/ 2 meters (6 feet 7 inches) deep throughout the course.**
- .2 **/M/ Teaching Racing Starts** — Minimum water depth for teaching all racing starts, prior to certification, in any setting from any height starting blocks, from backstroke ledges or from the deck shall be 6 feet (1.84 meters) measured for a distance of 3 feet 3-1/2 inches (1.0 meter) to 16 feet 5 inches (5.0 meters) from the end wall. Teaching racing starts shall only take place under the direct supervision of a USA Swimming member coach and shall include:
  - A All racing start instruction until a swimmer has been certified by his or her USA Swimming member coach as proficient in performing a racing start; and
  - B Subsequent to certification, instruction which seeks to alter a swimmer's basic technique in performing a racing start.Prior to certification, all racing starts must take place from a position in the water, and without use of the backstroke ledge, regardless of pool depth. Subsequent to certification, practicing of racing starts may take place in water depth of four (4) feet (1.22 meters) and deeper.
- .3 **/M/ Racing Starts** — Minimum water depth for racing starts during practice and competition shall be measured for a distance 3 feet 3-1/2 inches (1.0 meter) to 16 feet 5 inches (5.0 meters) from the end wall. Starting requirements and height of starting block shall be:
  - A In pools with water depth less than 4 feet (1.22 meters) at the starting end;
    - (1) The swimmer must start in the water;
    - (2) Backstroke starting ledges are not permitted.
  - B In pools with water depth 4 feet (1.22 meters) or more at the starting end, starting platforms shall meet the height requirements of 103.14.1.

**Note:** Local, state and municipal statutes, ordinances, rules and regulations, may have depth limitations in conflict with this section. The LSC and all Member Clubs should check for this at all times.

# Competitive Swimming Standards

## NCAA

### SECTION 2. Pool Dimensions [required]

#### Starting Depth

ARTICLE 1. For all championships and nonchampionships competition, the area of depth shall be not less than 4 feet [1.22 m] at the starting end of the racing course.

#### Number of Lanes

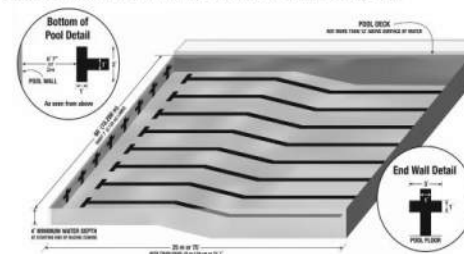
ARTICLE 2. All championships swimming competition shall be conducted in racing courses having a minimum of six, 6-foot [1.83 m] lanes. It is recommended that the racing course have a minimum of eight, 6-foot lanes.

#### Standard Length

ARTICLE 3. All championships swimming competition shall be conducted in racing courses of standard length (25 yards, 25 meters or 50 meters). When automatic officiating equipment touch pads are used at one or both ends, the course shall be of such length that ensures the required distance between the two touch pads or between either pad and the opposite end of the course.

#### Plummet Depth

ARTICLE 4. For all championships and nonchampionships springboard and platform diving competition, the water depths at the plummet shall be not less than the minimum standards specified in the table on Page 11.



### SECTION 3. General

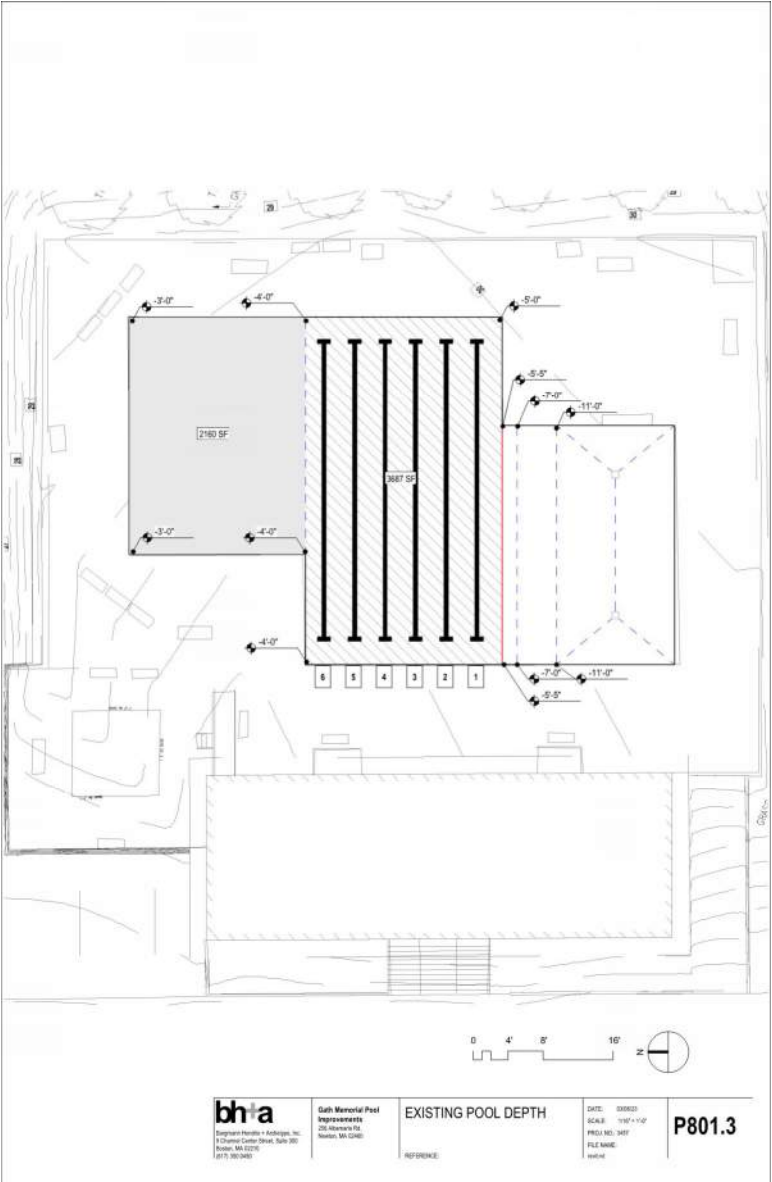
#### Facility Adaptations

ARTICLE 1. It is recommended that temporary facility adaptations be made to improve meet conditions for all contestants. Attention should be given to consistency in pool markings, and turning and starting surfaces. Facility adaptations by the visiting team must be approved by the host coach and must comply with the rules.





# Existing Pool



## Local Pools



Needham – 8 Lanes 4.5 ft to 12 ft



Canton – 6 Lanes 4 ft to 6 ft +/-



Belmont – 6 Lanes 4ft to 6 ft



Newton North – 6 Lanes 4 ft to 12 feet

## QUESTIONS & COMMENTS

We welcome your thoughts and comments. Please feel free to email us at:

Project email: [gathpool@newtonma.gov](mailto:gathpool@newtonma.gov)

Alejandro M. Valcarce, AIA: [avalcarce@newtonma.gov](mailto:avalcarce@newtonma.gov)

Luis Perez Demorizi: [lpdemorizi@newtonma.gov](mailto:lpdemorizi@newtonma.gov)

You can also visit the project website at:

[www.newtonma.gov/gathpoolproject](http://www.newtonma.gov/gathpoolproject)