

THE CITY OF NEWTON, MASSACHUSETTS

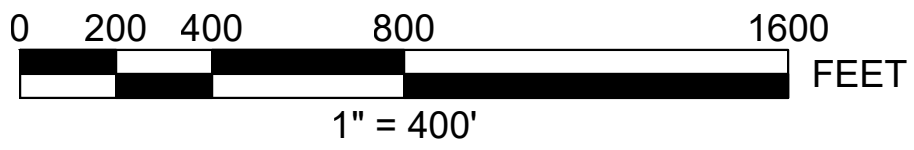
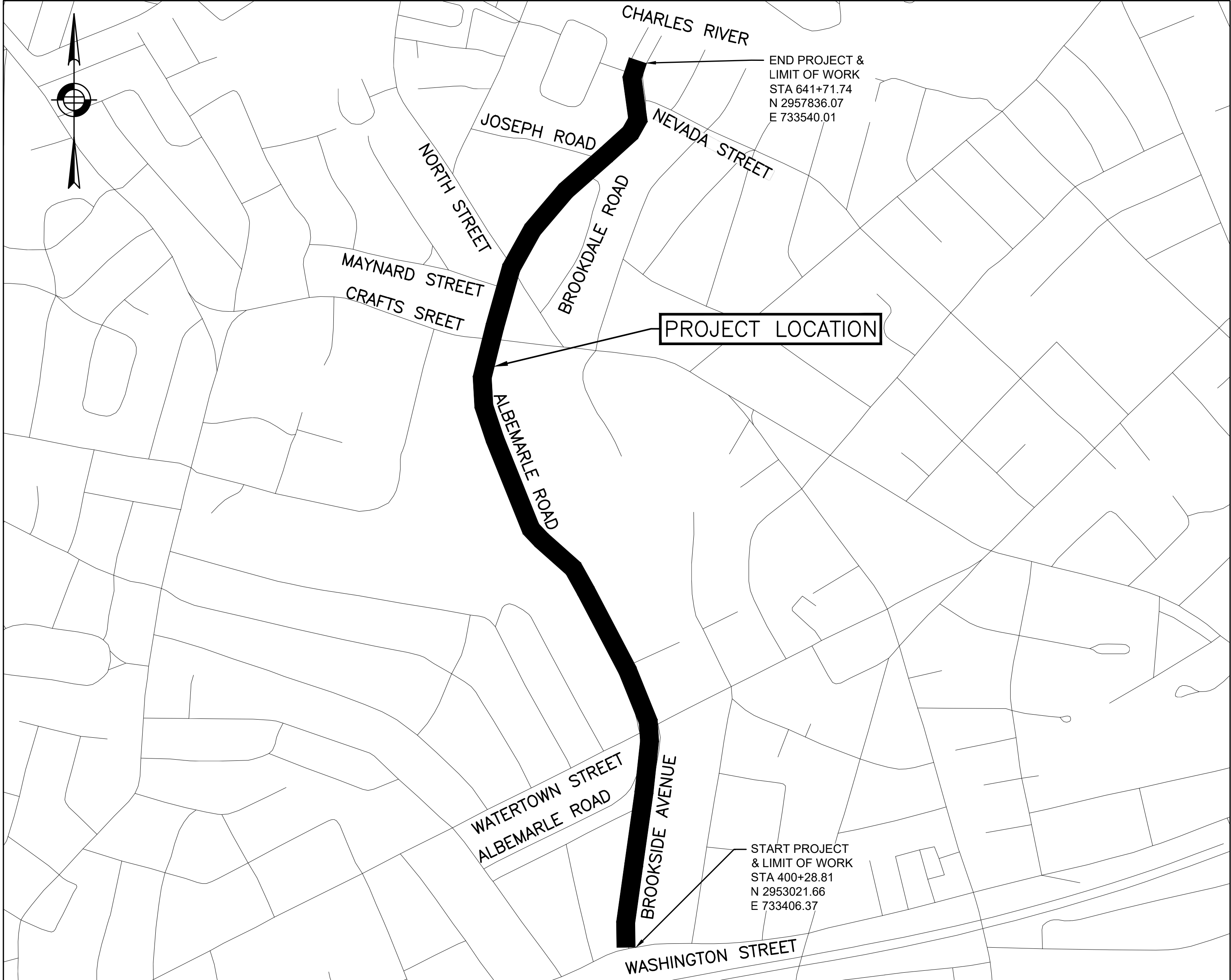
NEWTON ALBERMALE TRAFFIC CALMING

MIDDLESEX COUNTY

FINAL DESIGN SUBMISSION

INDEX

SHEET NO.	DESCRIPTION
1	TITLE SHEET & INDEX
2	GENERAL NOTES & LEGEND & ABBREVIATIONS
3-12	PAVEMENT MARKINGS & SIGNAGE PLANS
13	TRAFFIC SIGN SUMMARY
14	CONSTRUCTION DETAILS



DATE	DESCRIPTION	REV #
06/19/2023	FINAL HIGHWAY DESIGN PLANS	
03/09/2023	PRELIMINARY HIGHWAY DESIGN PLANS	

HSH PROJECT NUMBER	DATE	DRAWN BY	CHKD. BY	APPRVD. BY	SHEET NO.	TOTAL SHEETS
2022055	06/19/23	AK	MD	RL	1	14

6/19/2023 L:\2025\022055_CAD_Preliminary Design\Project Drawing Data\Plan Sheet Files\Plan Sheet DWG\022055_110(Cover).dwg
 Last Saved by: MSAV/ROAN
 Plotted by: Richard Steigert

GENERAL NOTES

1. THE CONTRACTOR SHALL COMPLY WITH ALL APPLICABLE FEDERAL, STATE, AND LOCAL LAWS, RULES, REGULATIONS AND SAFETY CODES IN THE CONSTRUCTION OF ALL IMPROVEMENTS. SIGN AND STRIPING WORK SHALL ALSO MEET ALL APPLICABLE REQUIREMENTS OF THE MANUAL OF UNIFORM TRAFFIC CONTROL DEVICES (MUTCD).
2. THE CONTRACTOR SHALL VERIFY BASE MAPPING IN THE FIELD PRIOR TO PLACING STRIPING OR SYMBOLS AND REPORT ANY DISCREPANCIES TO THE ENGINEER PRIOR TO START OF WORK. WHEN THESE PLANS ARE IN CONFLICT WITH ACTUAL SITE CONDITIONS, PROPOSED STRIPING MAY BE ADJUSTED AS DIRECTED BY CITY OF NEWTON ENGINEER.
3. ALL PAVEMENT MARKINGS AND SIGNS SHALL MEET MASSACHUSETTS TRANSPORTATION DEPARTMENT (MASSDOT) STANDARD SPECIFICATIONS.
4. ALL PAVEMENT MARKINGS ARE PAINT UNLESS OTHERWISE NOTED.
5. TEXT, ARROWS, AND BICYCLE LANE SYMBOLS SHALL BE WHITE. LONGITUDINAL LOCATIONS FOR BICYCLE LANE SYMBOLS ARE APPROXIMATE UNLESS DIMENSIONS GIVEN. SEE DRAWINGS FOR SYMBOL LOCATIONS.
6. IF PROPOSED PAVEMENT MARKINGS ARE SHOWN IN THE AREA OF EXISTING PAVEMENT MARKINGS, ERADICATE ANY CONFLICTING MARKINGS USING AN APPROVED METHOD SUCH THAT NO TRACES OF EXISTING MARKINGS ARE SHOWN. THE CONTRACTOR SHALL NOT INSTALL NEW PAVEMENT MARKINGS WITHOUT ERADICATING EXISTING PAVEMENT MARKINGS FIRST.
7. PAVEMENT MARKING PLANS SHOW SIGNING ASSOCIATED WITH BICYCLE LANE MARKINGS AND SPEED CUSHION. THE CONTRACTOR IS RESPONSIBLE FOR THE INSTALLATION OF ALL PROPOSED SIGNS AND ANY MODIFICATIONS TO EXISTING SIGNS.
8. THE CONTRACTOR SHALL TAKE ADEQUATE PRECAUTIONS TO PROTECT ALL WALKS, GRADING, SIDEWALKS, AND FEATURES OUTSIDE OF THE LIMITS OF WORK AND SHALL REPAIR AND REPLACE OR OTHERWISE MAKE GOOD AS DIRECTED BY THE ENGINEER OR OWNER'S DESIGNATED REPRESENTATIVE ANY SUCH OR OTHER DAMAGE SO CAUSED AT NO ADDITIONAL COST.
9. ALL EXISTING PEDESTRIAN RAMP LOCATIONS SHOWN ARE APPROXIMATE. EXISTING PEDESTRIAN RAMPS HAVE NOT BEEN REVIEWED FOR ADA COMPLIANCE.
10. AREAS OUTSIDE THE LIMITS OF PROPOSED WORK DAMAGED BY THE CONTRACTOR'S OPERATIONS, INCLUDING STAGING AREAS, SHALL BE RESTORED BY THE CONTRACTOR TO THEIR ORIGINAL CONDITION AT THE CONTRACTOR'S EXPENSE.
11. WHERE THE NEW CONSTRUCTION IS WITHIN THE EXISTING TRAVELED WAY, THE CONTRACTOR SHALL PERFORM WORK SO THAT INTERFERENCE TO BUSINESS CONCERNS AND ABUTTERS, ON ACCOUNT OF THE CONSTRUCTION WORK, IS KEPT TO A MINIMUM. THE CONTRACTOR WILL NOT BE ALLOWED TO PARK EQUIPMENT, OR STOCKPILE MATERIAL ON THE TRAVELED WAYS OVERNIGHT OR WHEN NOT IN USE. THE CONTRACTOR SHALL MAINTAIN SAFE AND REASONABLE ACCESS TO AND FROM ABUTTING PROPERTIES AT ALL TIMES AT NO ADDITIONAL COST.
12. THE CONTRACTOR SHALL DISPOSE OF ALL WASTE MATERIAL IN ACCORDANCE WITH ALL FEDERAL, STATE, AND LOCAL REGULATIONS AT HIS OWN EXPENSE, OUTSIDE OF THE PROJECT LIMITS.
13. IT SHALL BE THE RESPONSIBILITY OF THE CONTRACTOR TO PROVIDE SHOP DRAWINGS TO CITY OF NEWTON ENGINEER FOR TRAFFIC MANAGEMENT AND TO COMPLY WITH CONDITIONS OUTLINED WITHIN THE SPECIFICATIONS AND MASSDOT HIGHWAY STANDARD DETAILS AND DRAWINGS FOR THE DEVELOPMENT OF TRAFFIC MANAGEMENT PLANS MANUAL. SHOP DRAWINGS SHALL BE SUBMITTED TO THE RESIDENT ENGINEER.
14. THE MINIMUM MOUNTING HEIGHT OF POST-MOUNTED SIGNS, MEASURED VERTICALLY FROM THE BOTTOM OF THE SIGN TO THE TOP OF THE CURB OR SIDEWALK, OR TO THE ELEVATION OF THE NEAR EDGE OF THE TRAVELED WAY, SHALL BE 7 FEET UNLESS OTHERWISE SPECIFIED ON THE PLANS.
15. PROPOSED SIGNS SHOULD BE PLACED OUTSIDE OF THE ADA REQUIRED PEDESTRIAN RIGHT-OF-WAY.
16. THE CONTRACTOR SHALL BE REQUIRED TO REPAIR THE SIDEWALK WHERE A SIGNPOST IS INSTALLED.
17. THE CONTRACTOR SHALL ENSURE THAT ALL PROPOSED SIGNAGE DOES NOT RESTRICT AN ACCESSIBLE PEDESTRIAN PATH OF TRAVEL.

STREET FURNITURE AND TRAFFIC LEGEND

PROPOSED	EXISTING (TO REMAIN)	REMOVE/ABANDON	DESCRIPTION
			SIGN POST
			FLEX POST
			SPEED CUSHION (6' X 7')
			PEDESTRIAN CURB RAMP

ABBREVIATIONS & SYMBOLS

PROP	PROPOSED
TYP	TYPICAL
	ONE-WAY TRAFFIC
EOP	EDGE OF PAVEMENT
RET	RETAIN
EXIST	EXISTING
	UTILITY POLE
ST	STREET
O.C.	ON CENTER
CW	CROSSWALK
R&S	REMOVE AND STACK
PC	POINT OF CURVATURE
PI	POINT OF INTERSECTION
PT	POINT OF TANGENCY

PAVEMENT MARKING LEGEND

EXISTING	PROPOSED	DESCRIPTION
	SYL	6" SOLID YELLOW LINE
	SWL	6" SOLID WHITE LINE
	SL	WHITE STOP LINE (12" UNLESS OTHERWISE SPECIFIED)
	DYCL	2"-6" DOUBLE YELLOW CENTER LINES
	DWBL	6" DOTTED WHITE BIKE LINE (2' MARK, 2' SKIP)
		CROSSWALK
		YIELD LINES
	SWOCHL	12" SOLID WHITE CHANNELIZATION (20' O.C. @45°)
	SWOG	12" SOLID WHITE GORE (15' O.C. @45°)
		ACCESSIBLE PARKING
		BIKE CROSSING
		BIKE LANE SYMBOL
		SHARED LANE SYMBOL
		COLORIZED PAVEMENT - GREEN
		WHITE PAVEMENT ARROW AND LEGEND
	SCHOOL BUS ZONE	WHITE PAVEMENT MARKING - SCHOOL BUS ZONE

neighborwaysdesign

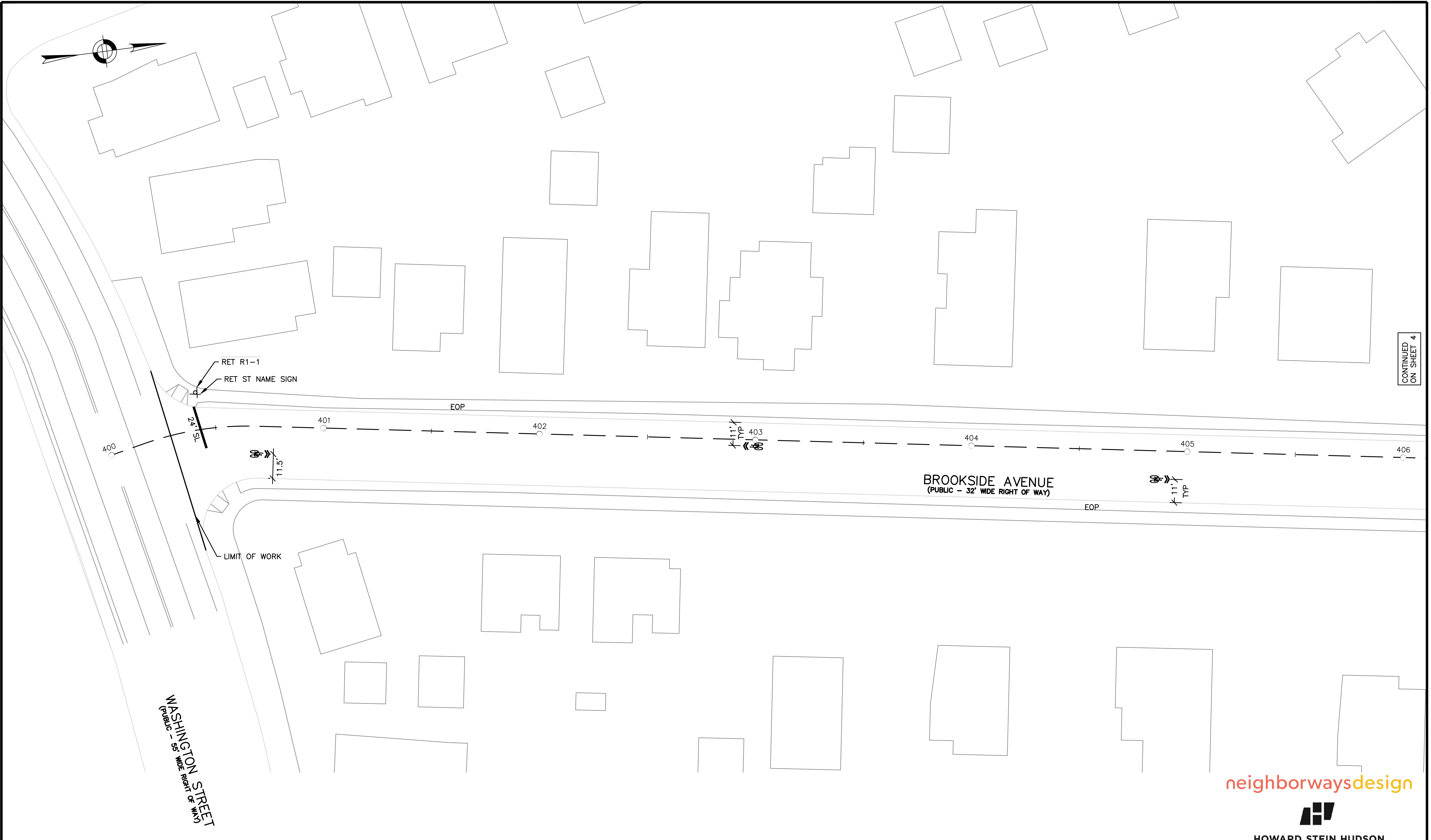


HOWARD STEIN HUDSON
 11 Beacon Street, Suite 1010
 Boston, MA 02108
 www.hshassoc.com

**NEWTON ALBEMARLE TRAFFIC CALMING
 GENERAL NOTES & LEGEND &
 ABBREVIATIONS**

HSH PROJECT NUMBER	DATE	DRAWN BY	CHKD. BY	APPRVD. BY	SHEET NO.	TOTAL SHEETS
2022055	06/19/23	AK	MD	RL	2	14

6/19/2023 L:\2025\022055_CAD_Preliminary Design\Project Drawing Data\Plan Sheet Files\Plan Sheet DWG\022055_TR (Pmnt.Mk) 1.dwg
 Last Saved By: MSAV\PMON
 Plotted By: Nicholas Sigart



CONTINUED ON SHEET 4

NOTES

1. ALL EXISTING SIGNAGE SHALL BE RETAINED UNLESS OTHERWISE SPECIFIED ON PLANS.
2. ERADICATE ANY EXISTING PAVEMENT MARKINGS THAT CONFLICT WITH PROPOSED PAVEMENT MARKINGS.
3. SHARED LANE SYMBOLS SHALL NOT BE PLACED IN LINE WITH DRIVEWAY OPENINGS.
4. SIDEWALK AND RAMP LAYOUT IS APPROXIMATE AND LOCATION SHALL BE CONFIRMED IN THE FIELD FOR APPROPRIATE SIGN AND MARKING INSTALLATION.

neighborwaysdesign

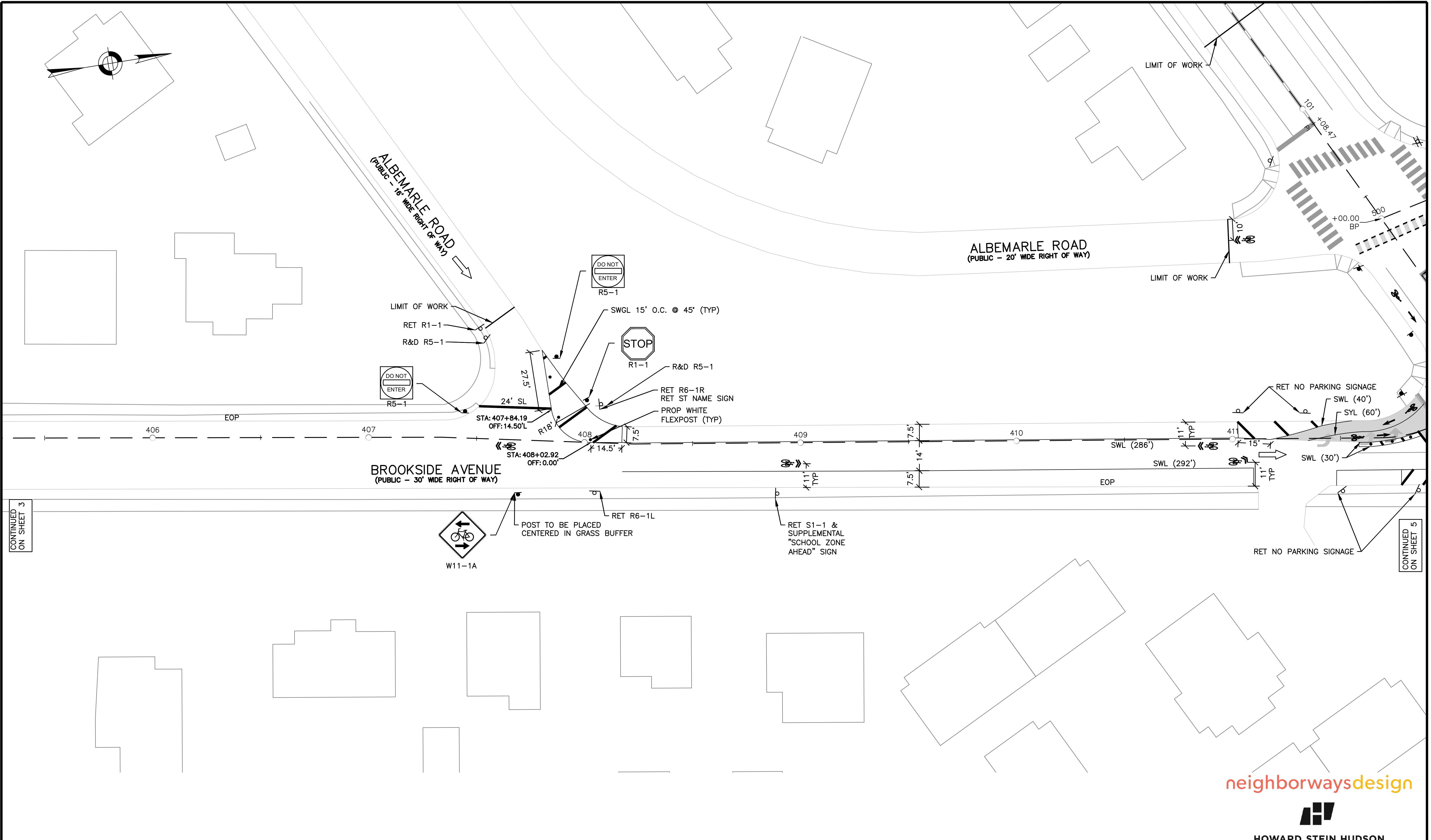
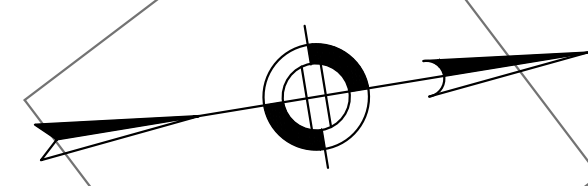


HOWARD STEIN HUDSON
 11 Beacon Street, Suite 1010
 Boston, MA 02108
 www.hshassoc.com



**NEWTON ALBEMARLE TRAFFIC CALMING
 PAVEMENT MARKING &
 SIGNAGE PLANS**

HSH PROJECT NUMBER	DATE	DRAWN BY	CHKD. BY	APPRVD. BY	SHEET NO.	TOTAL SHEETS
2022055	06/19/23	AE	MD	RL	3	14



CONTINUED ON SHEET 3

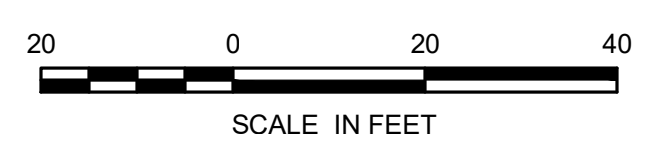
CONTINUED ON SHEET 5

- NOTES**
1. ALL EXISTING SIGNAGE SHALL BE RETAINED UNLESS OTHERWISE SPECIFIED ON PLANS.
 2. ERADICATE ANY EXISTING PAVEMENT MARKINGS THAT CONFLICT WITH PROPOSED PAVEMENT MARKINGS.
 3. SHARED LANE SYMBOLS SHALL NOT BE PLACED IN LINE WITH DRIVEWAY OPENINGS.
 4. SIDEWALK AND RAMP LAYOUT IS APPROXIMATE AND LOCATION SHALL BE CONFIRMED IN THE FIELD FOR APPROPRIATE SIGN AND MARKING INSTALLATION.

neighborwaysdesign

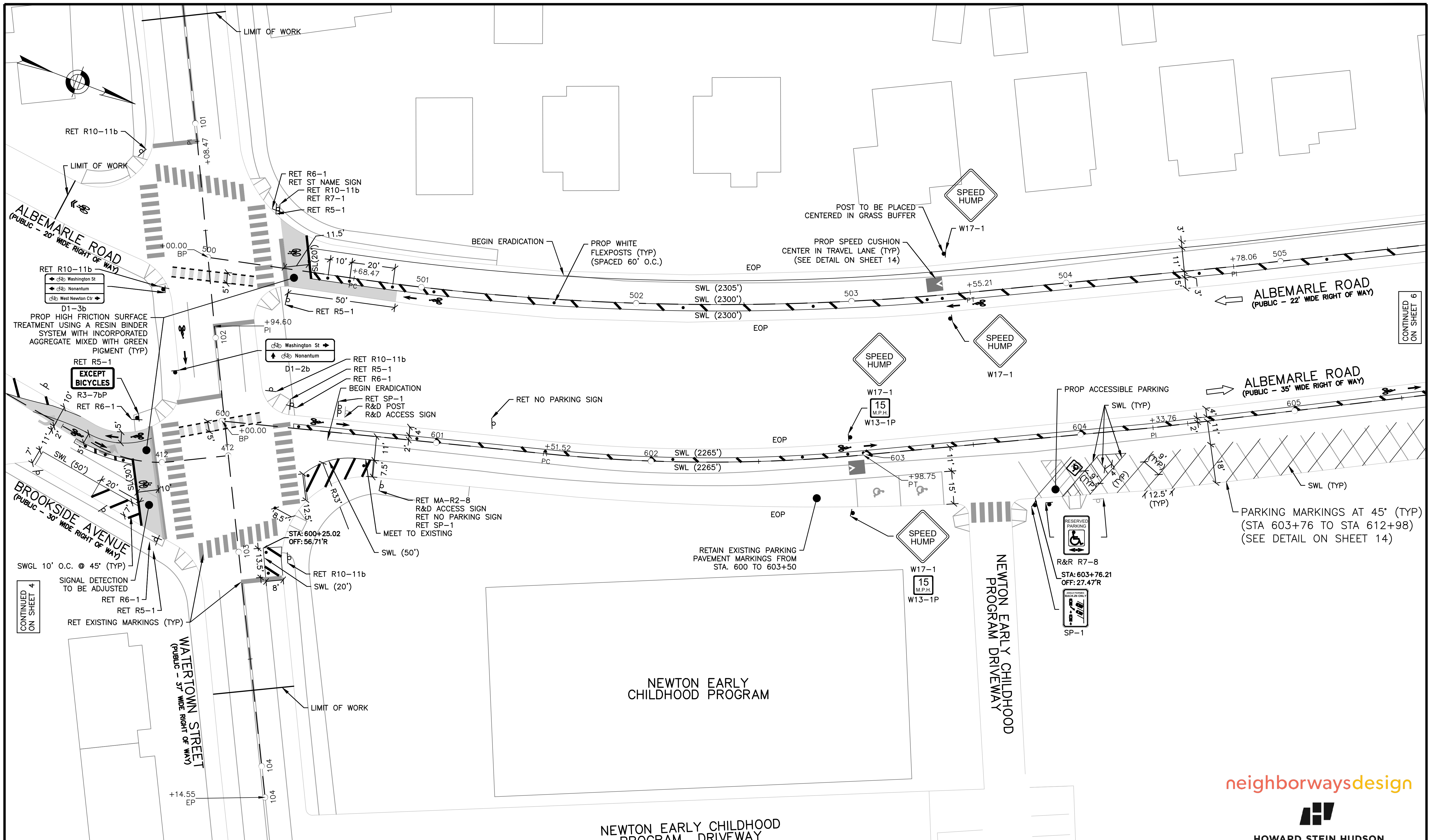


HOWARD STEIN HUDSON
 11 Beacon Street, Suite 1010
 Boston, MA 02108
 www.hshassoc.com



NEWTON ALBEMARLE TRAFFIC CALMING PAVEMENT MARKING & SIGNAGE PLANS		DATE	CHKD. BY	APPRVD. BY	SHEET NO.	TOTAL SHEETS
HSN PROJECT NUMBER	2022055	06/19/23	AE	MD	RL	4
DATE	06/19/23	AE	MD	RL	4	14

6/19/2023 1:20:55:022055_CAD_Preliminary Design/Project Drawing Data/Plan Sheet Files/Plan Sheet DWG/022055_TR (P.mtk) 1.dwg
 Last Saved By: MSAV/AVON
 Printed By: Michaela Sigart



CONTINUED ON SHEET 6

CONTINUED ON SHEET 4

NOTES

1. ALL EXISTING SIGNAGE SHALL BE RETAINED UNLESS OTHERWISE SPECIFIED ON PLANS.
2. ERADICATE ANY EXISTING PAVEMENT MARKINGS THAT CONFLICT WITH PROPOSED PAVEMENT MARKINGS.
3. ERADICATE EXISTING PARKING LANE LINES FROM STA 603+76 TO 622+70. REPLACE WITH REVERSE ANGLED PARKING WITH DIMENSIONS AS SHOWN.
4. SHARED LANE SYMBOLS SHALL NOT BE PLACED IN LINE WITH DRIVEWAY OPENINGS.
5. SIDEWALK AND RAMP LAYOUT IS APPROXIMATE AND LOCATION SHALL BE CONFIRMED IN THE FIELD FOR APPROPRIATE SIGN AND MARKING INSTALLATION.



neighborwaysdesign

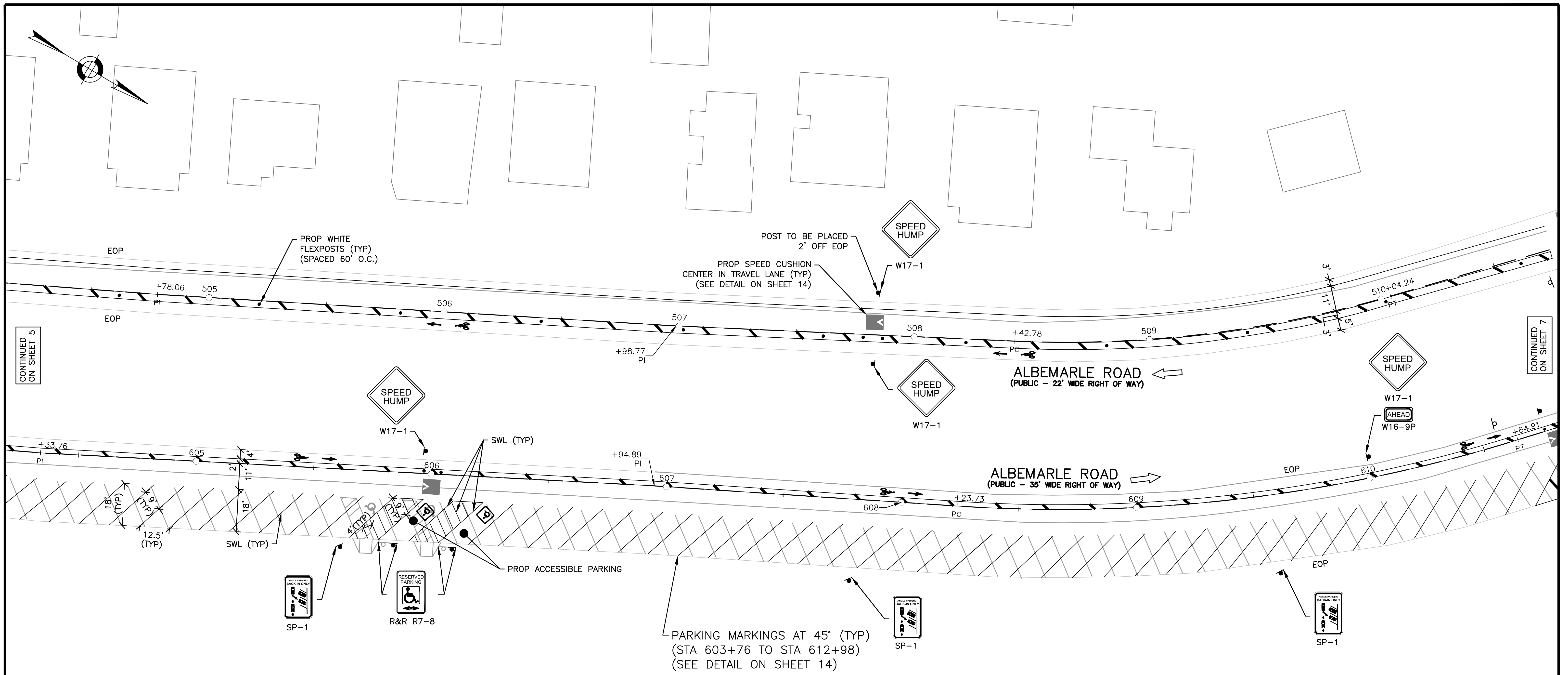


HOWARD STEIN HUDSON
 11 Beacon Street, Suite 1010
 Boston, MA 02108
 www.hshassoc.com

**NEWTON ALBEMARLE TRAFFIC CALMING
 PAVEMENT MARKING &
 SIGNAGE PLANS**

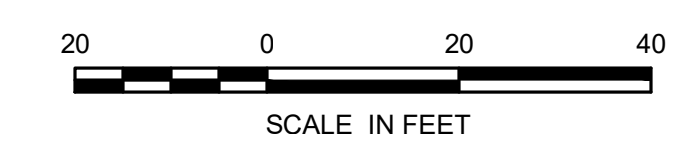
HSH PROJECT NUMBER	DATE	DRAWN BY	CHKD. BY	APPRVD. BY	SHEET NO.	TOTAL SHEETS
2022055	06/19/23	AE	MD	RL	5	14

6/19/2023 L:\2025\022055_CAD_Preliminary Design\Project Drawing Data\Plan Sheet Files\Plan Sheet DWG\022055_TR (Pmt.Mk) 1.dwg
 Last Saved by: MSAV\AVRAN
 Printed by: MSAV\Stigert



NOTES

1. ALL EXISTING SIGNAGE SHALL BE RETAINED UNLESS OTHERWISE SPECIFIED ON PLANS.
2. ERADICATE ANY EXISTING PAVEMENT MARKINGS THAT CONFLICT WITH PROPOSED PAVEMENT MARKINGS.
3. ERADICATE EXISTING PARKING LANE LINES FROM STA 603+76 TO 622+70. REPLACE WITH REVERSE ANGLED PARKING WITH DIMENSIONS AS SHOWN.
4. SIDEWALK AND RAMP LAYOUT IS APPROXIMATE AND LOCATION SHALL BE CONFIRMED IN THE FIELD FOR APPROPRIATE SIGN AND MARKING INSTALLATION.



neighborwaysdesign



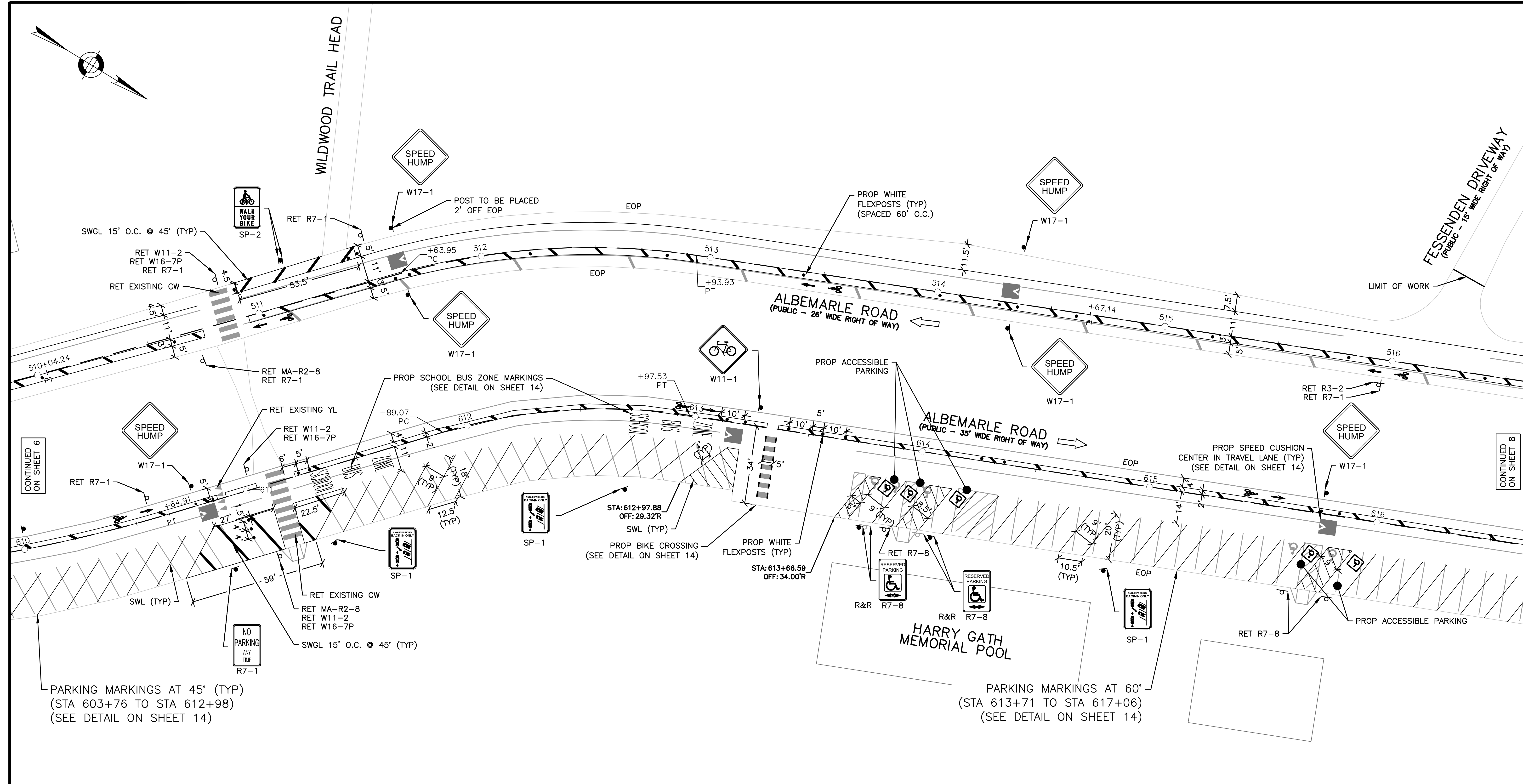
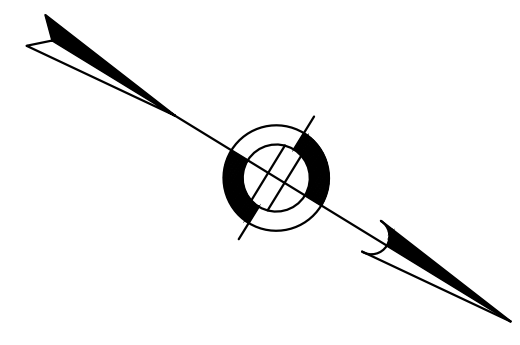
HOWARD STEIN HUDSON

11 Beacon Street, Suite 1010
Boston, MA 02108
www.hshassoc.com

**NEWTON ALBEMARLE TRAFFIC CALMING
PAVEMENT MARKING &
SIGNAGE PLANS**

HSH PROJECT NUMBER	DATE	DRAWN BY	CHKD. BY	APPRVD. BY	SHEET NO.	TOTAL SHEETS
2022055	06/19/23	AE	MD	RL	6	14

6/19/2023 L:\2025\022955_CAD_Preliminary Design\Project Drawing Data\Plan Sheet Files\Plan Sheet DWG\022055_TR (Print.Mk) 1.dwg
 last saved by: MSAV\RONA
 printed by: MSAV\Stuart



CONTINUED ON SHEET 6

CONTINUED ON SHEET 8

PARKING MARKINGS AT 45' (TYP)
 (STA 603+76 TO STA 612+98)
 (SEE DETAIL ON SHEET 14)

PARKING MARKINGS AT 60'
 (STA 613+71 TO STA 617+06)
 (SEE DETAIL ON SHEET 14)

- NOTES**
1. ALL EXISTING SIGNAGE SHALL BE RETAINED UNLESS OTHERWISE SPECIFIED ON PLANS.
 2. ERADICATE ANY EXISTING PAVEMENT MARKINGS THAT CONFLICT WITH PROPOSED PAVEMENT MARKINGS.
 3. ERADICATE EXISTING PARKING LANE LINES FROM STA 603+76 TO 622+70. REPLACE WITH REVERSE ANGLED PARKING WITH DIMENSIONS AS SHOWN.
 4. SIDEWALK AND RAMP LAYOUT IS APPROXIMATE AND LOCATION SHALL BE CONFIRMED IN THE FIELD FOR APPROPRIATE SIGN AND MARKING INSTALLATION.

neighborwaysdesign



HOWARD STEIN HUDSON
 11 Beacon Street, Suite 1010
 Boston, MA 02108
 www.hshassoc.com

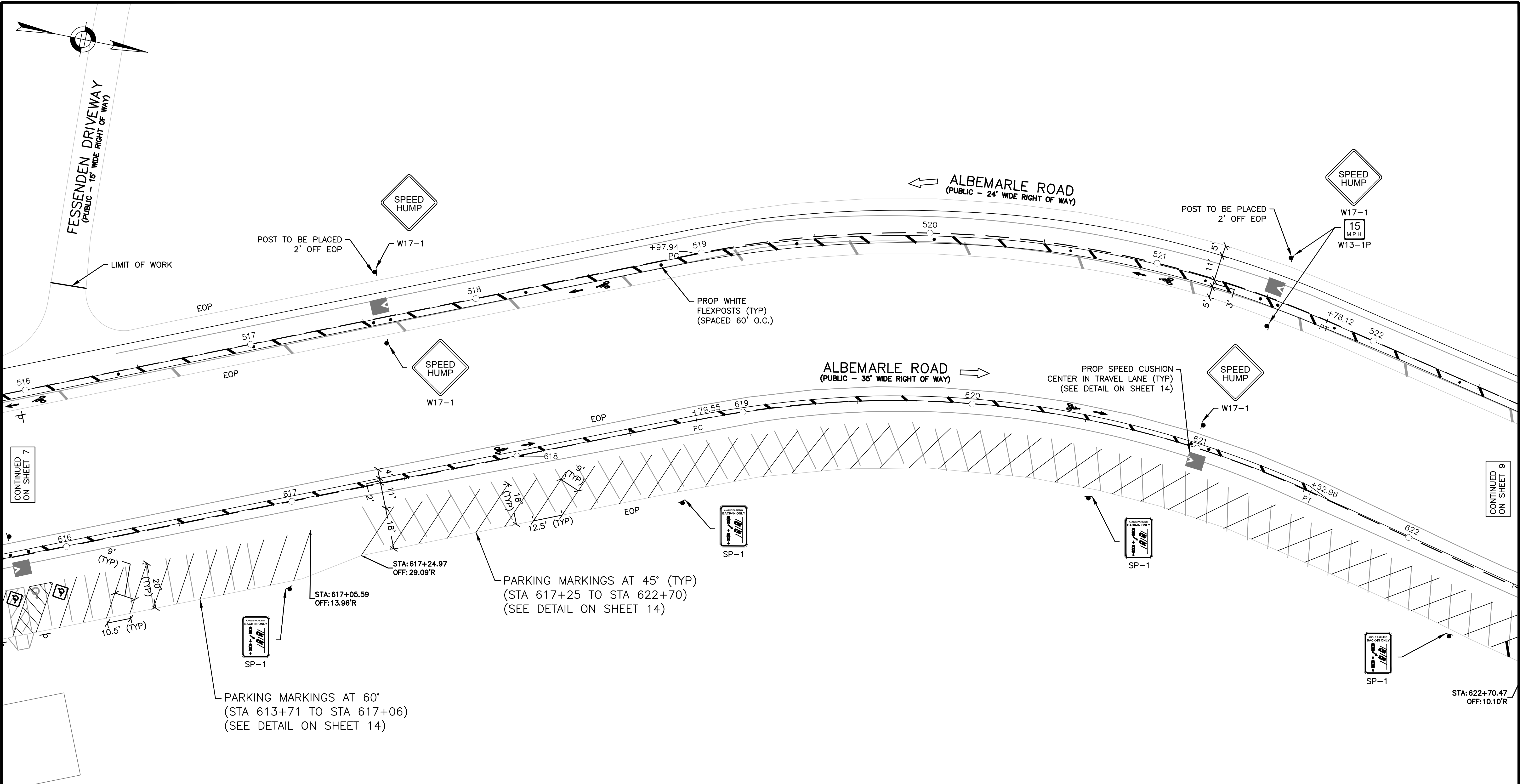
**NEWTON ALBEMARLE TRAFFIC CALMING
 PAVEMENT MARKING &
 SIGNAGE PLANS**



HSH PROJECT NUMBER	DATE	DRAWN BY	CHKD. BY	APPRVD. BY	SHEET NO.	TOTAL SHEETS
2022055	06/19/23	AE	MD	RL	7	14

6/19/2023 L:\2025\022955_CAD_Preliminary Design\Project Drawing Data\Plan Sheet Files\Plan Sheet DWG\022955_TR (Print.Mk) 1.dwg
 Last Saved By: MS/AV/ANON
 Printed By: Michael Stigert

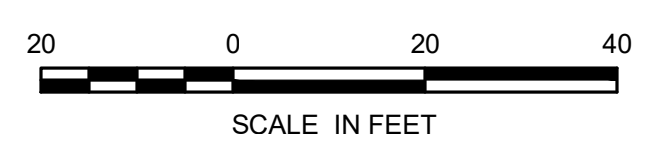
6/19/2023 L:\2025\022055_CAD_Preliminary Design\Project Drawing Data\Plan Sheet Files\Plan Sheet DWG\022055_TR (Print.Mk) (mg)
 Last Saved By: MSAV\PMAN
 Printed By: Michaela Sigart



CONTINUED ON SHEET 7

CONTINUED ON SHEET 9

- NOTES**
1. ALL EXISTING SIGNAGE SHALL BE RETAINED UNLESS OTHERWISE SPECIFIED ON PLANS.
 2. ERADICATE ANY EXISTING PAVEMENT MARKINGS THAT CONFLICT WITH PROPOSED PAVEMENT MARKINGS.
 3. ERADICATE EXISTING PARKING LANE LINES FROM STA 603+76 TO 622+70. REPLACE WITH REVERSE ANGLED PARKING WITH DIMENSIONS AS SHOWN.
 4. SIDEWALK AND RAMP LAYOUT IS APPROXIMATE AND LOCATION SHALL BE CONFIRMED IN THE FIELD FOR APPROPRIATE SIGN AND MARKING INSTALLATION.



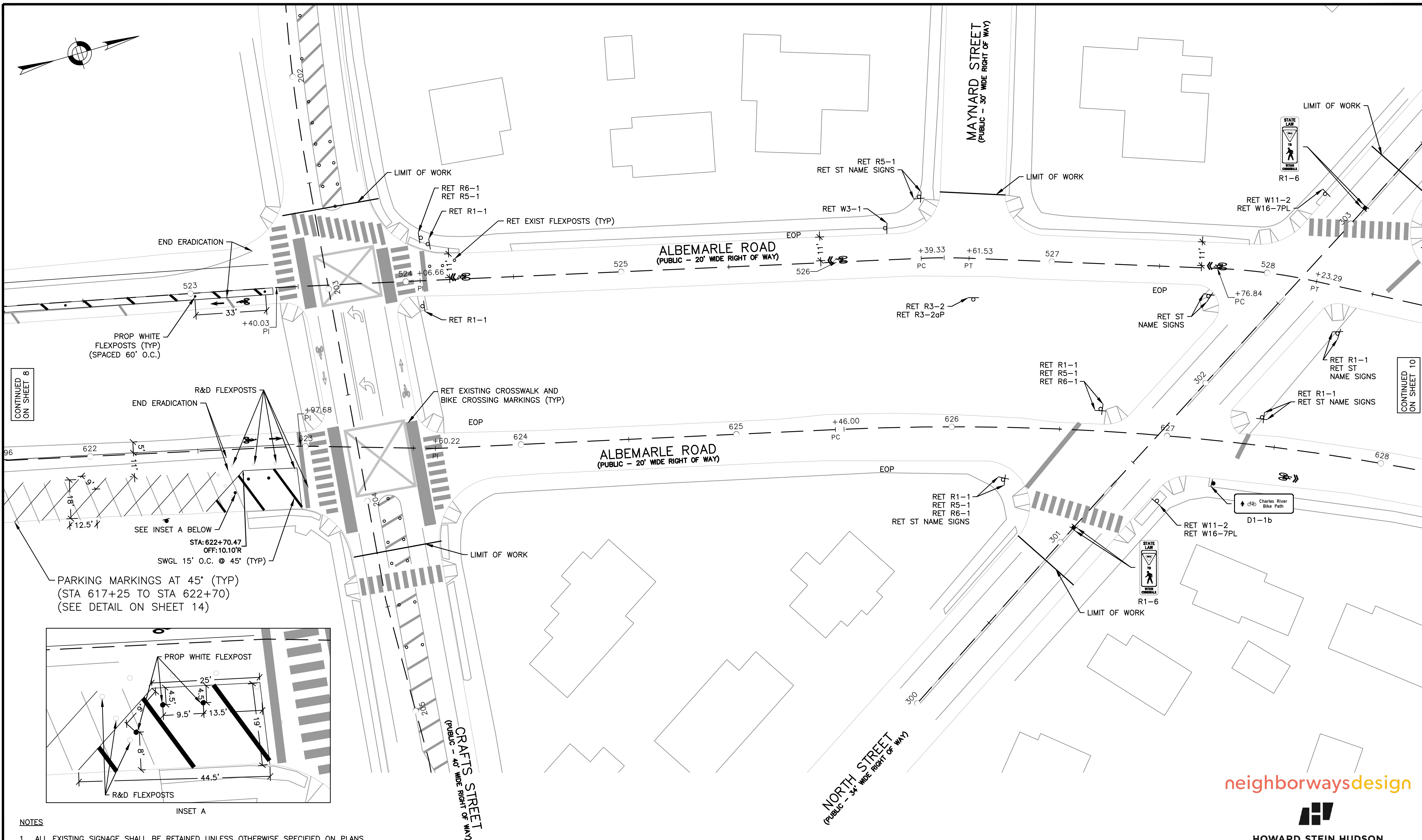
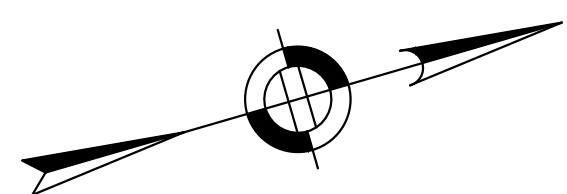
neighborwaysdesign



HOWARD STEIN HUDSON
 11 Beacon Street, Suite 1010
 Boston, MA 02108
 www.hshassoc.com

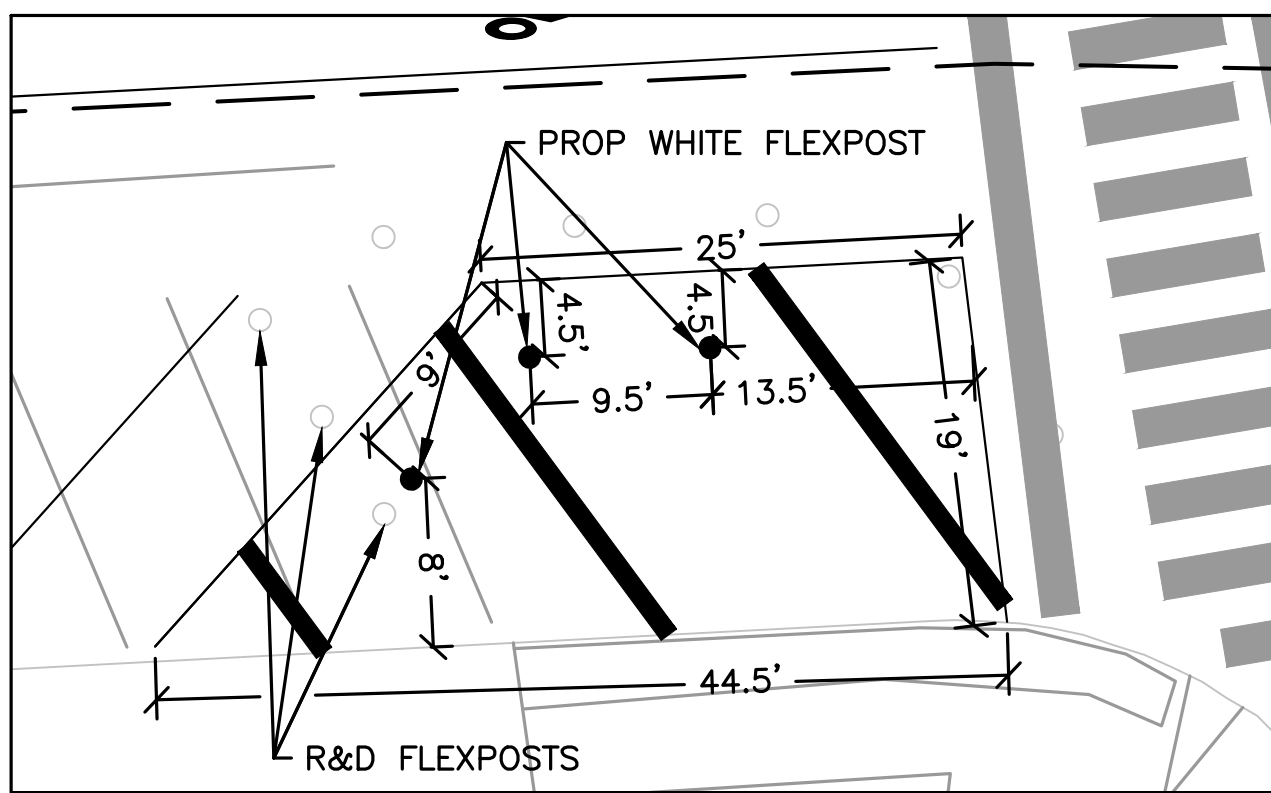
**NEWTON ALBEMARLE TRAFFIC CALMING
 PAVEMENT MARKING &
 SIGNAGE PLANS**

HSH PROJECT NUMBER	DATE	DRAWN BY	CHKD. BY	APPRVD. BY	SHEET NO.	TOTAL SHEETS
2022055	06/19/23	AE	MD	RL	8	14



CONTINUED ON SHEET 8

CONTINUED ON SHEET 10



INSET A

NOTES

1. ALL EXISTING SIGNAGE SHALL BE RETAINED UNLESS OTHERWISE SPECIFIED ON PLANS.
2. ERADICATE ANY EXISTING PAVEMENT MARKINGS THAT CONFLICT WITH PROPOSED PAVEMENT MARKINGS.
3. ERADICATE EXISTING PARKING LANE LINES FROM STA 603+76 TO 622+70. REPLACE WITH REVERSE ANGLED PARKING WITH DIMENSIONS AS SHOWN.
4. SHARED LANE SYMBOLS SHALL NOT BE PLACED IN LINE WITH DRIVEWAY OPENINGS.
5. RETAIN EXISTING FLEXPOSTS UNLESS OTHERWISE SPECIFIED ON PLANS.
6. SIDEWALK AND RAMP LAYOUT IS APPROXIMATE AND LOCATION SHALL BE CONFIRMED IN THE FIELD FOR APPROPRIATE SIGN AND MARKING INSTALLATION.

neighborwaysdesign



HOWARD STEIN HUDSON

11 Beacon Street, Suite 1010
Boston, MA 02108
www.hshassoc.com

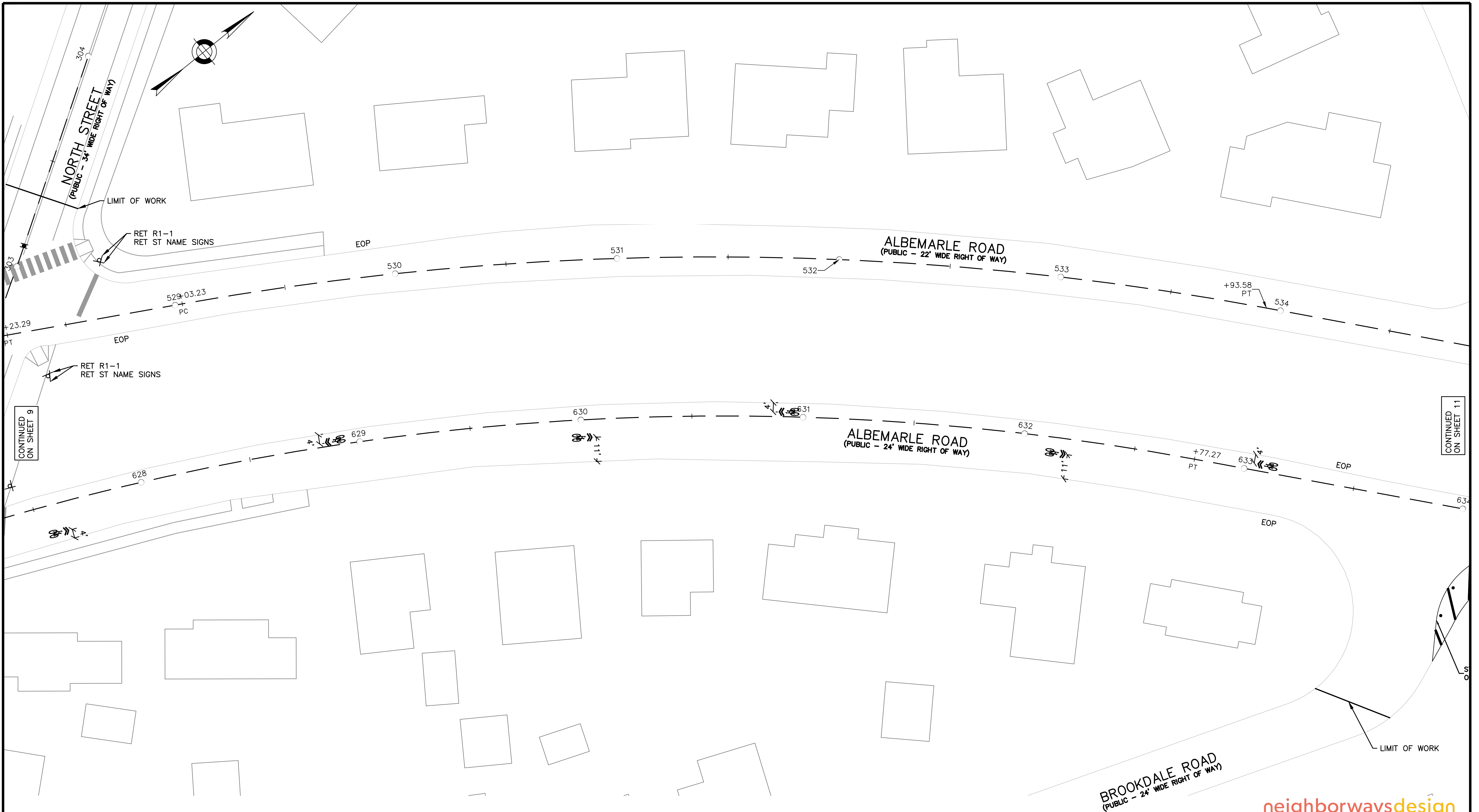
NEWTON ALBEMARLE TRAFFIC CALMING
PAVEMENT MARKING &
SIGNAGE PLANS

HSH PROJECT NUMBER	DATE	DRAWN BY	CHKD. BY	APPRVD. BY	SHEET NO.	TOTAL SHEETS
2022055	06/19/23	AE	MD	RL	9	14



6/19/2023 1:20:55:022055_CAD_Preliminary Design/Project Drawing Data/Plan Sheet Files/Plan Sheet DWG/2022055_TR (Print.Mk) (mg)

6/19/2023 L:\2025\022055_CAD_Preliminary Design\Project Drawing Data\Plan Sheet Files\Plan Sheet DWG\022055_TR (P.mt.Mk).dwg
 Last Saved By: MSAVAVRAN
 Printed By: Michaela Sigart



CONTINUED ON SHEET 9

CONTINUED ON SHEET 11

NOTES

1. ALL EXISTING SIGNAGE SHALL BE RETAINED UNLESS OTHERWISE SPECIFIED ON PLANS.
2. ERADICATE ANY EXISTING PAVEMENT MARKINGS THAT CONFLICT WITH PROPOSED PAVEMENT MARKINGS.
3. SHARED LANE SYMBOLS SHALL NOT BE PLACED IN LINE WITH DRIVEWAY OPENINGS.
4. SIDEWALK AND RAMP LAYOUT IS APPROXIMATE AND LOCATION SHALL BE CONFIRMED IN THE FIELD FOR APPROPRIATE SIGN AND MARKING INSTALLATION.

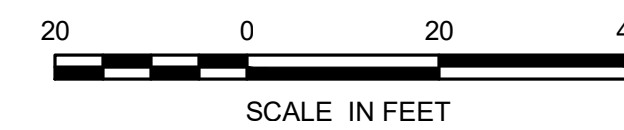
neighborwaysdesign

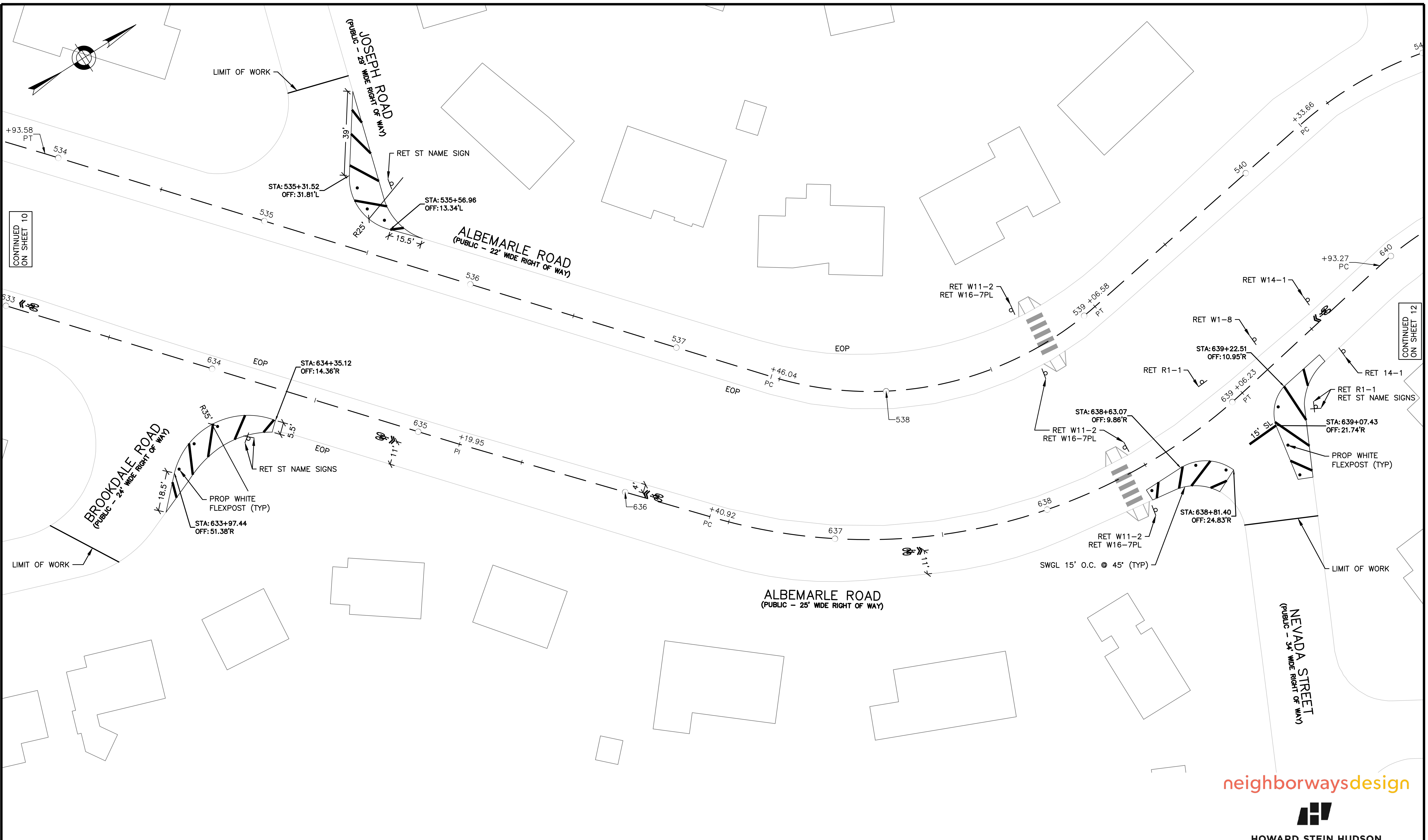


HOWARD STEIN HUDSON
 11 Beacon Street, Suite 1010
 Boston, MA 02108
 www.hshassoc.com

**NEWTON ALBEMARLE TRAFFIC CALMING
 PAVEMENT MARKING &
 SIGNAGE PLANS**

HSH PROJECT NUMBER	DATE	DRAWN BY	CHKD. BY	APPRVD. BY	SHEET NO.	TOTAL SHEETS
2022055	06/19/23	AE	MD	RL	10	14





CONTINUED ON SHEET 10

CONTINUED ON SHEET 12

- NOTES**
1. ALL EXISTING SIGNAGE SHALL BE RETAINED UNLESS OTHERWISE SPECIFIED ON PLANS.
 2. ERADICATE ANY EXISTING PAVEMENT MARKINGS THAT CONFLICT WITH PROPOSED PAVEMENT MARKINGS.
 3. SHARED LANE SYMBOLS SHALL NOT BE PLACED IN LINE WITH DRIVEWAY OPENINGS.
 4. SIDEWALK AND RAMP LAYOUT IS APPROXIMATE AND LOCATION SHALL BE CONFIRMED IN THE FIELD FOR APPROPRIATE SIGN AND MARKING INSTALLATION.



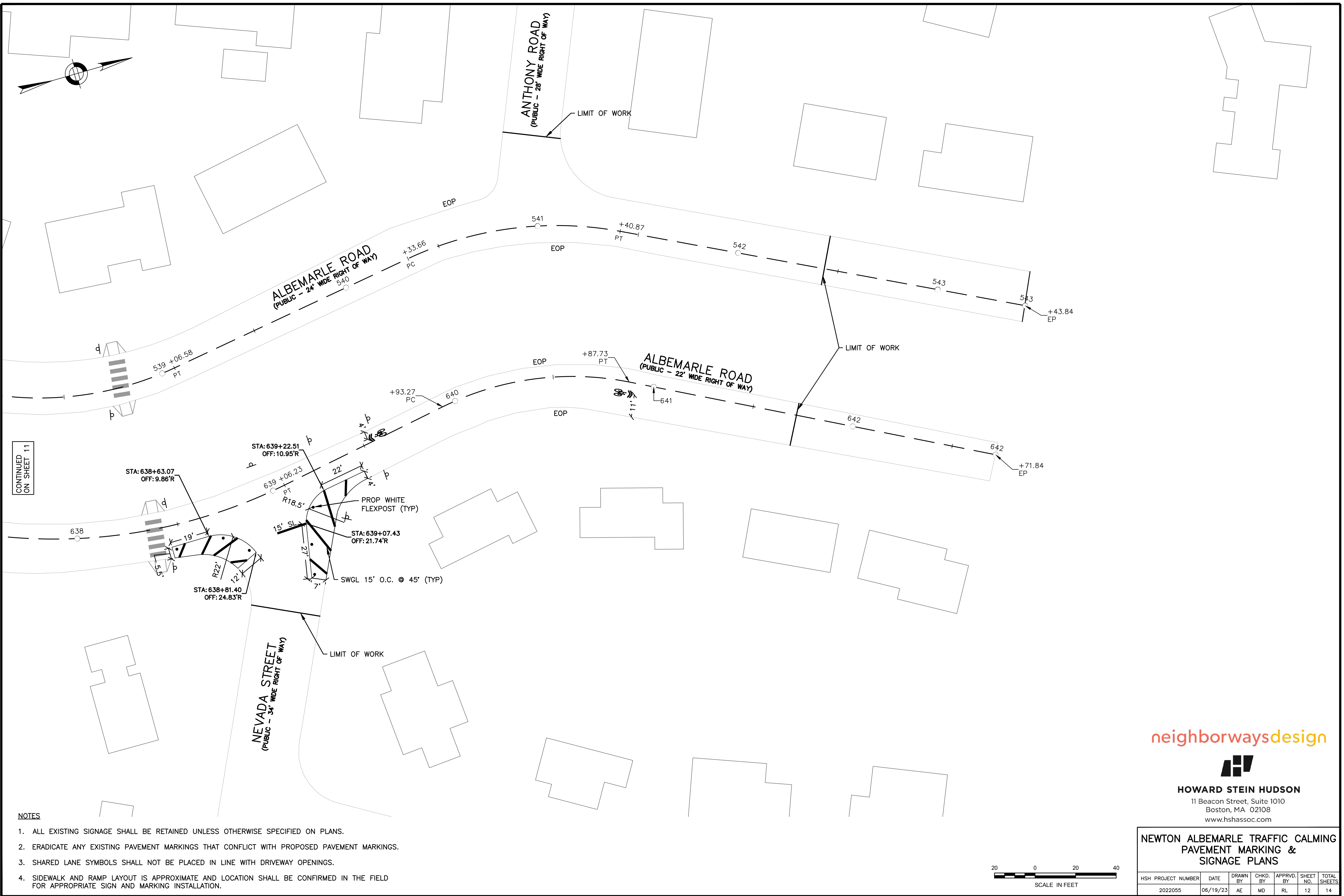
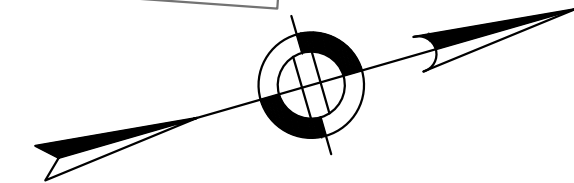
neighborwaysdesign



HOWARD STEIN HUDSON
 11 Beacon Street, Suite 1010
 Boston, MA 02108
 www.hshassoc.com

**NEWTON ALBEMARLE TRAFFIC CALMING
 PAVEMENT MARKING &
 SIGNAGE PLANS**

HSH PROJECT NUMBER	DATE	DRAWN BY	CHKD. BY	APPRVD. BY	SHEET NO.	TOTAL SHEETS
2022055	06/19/23	AE	MD	RL	11	14



CONTINUED ON SHEET 11

NOTES

- 1. ALL EXISTING SIGNAGE SHALL BE RETAINED UNLESS OTHERWISE SPECIFIED ON PLANS.
- 2. ERADICATE ANY EXISTING PAVEMENT MARKINGS THAT CONFLICT WITH PROPOSED PAVEMENT MARKINGS.
- 3. SHARED LANE SYMBOLS SHALL NOT BE PLACED IN LINE WITH DRIVEWAY OPENINGS.
- 4. SIDEWALK AND RAMP LAYOUT IS APPROXIMATE AND LOCATION SHALL BE CONFIRMED IN THE FIELD FOR APPROPRIATE SIGN AND MARKING INSTALLATION.



neighborwaysdesign



HOWARD STEIN HUDSON
 11 Beacon Street, Suite 1010
 Boston, MA 02108
 www.hshassoc.com

**NEWTON ALBEMARLE TRAFFIC CALMING
 PAVEMENT MARKING &
 SIGNAGE PLANS**

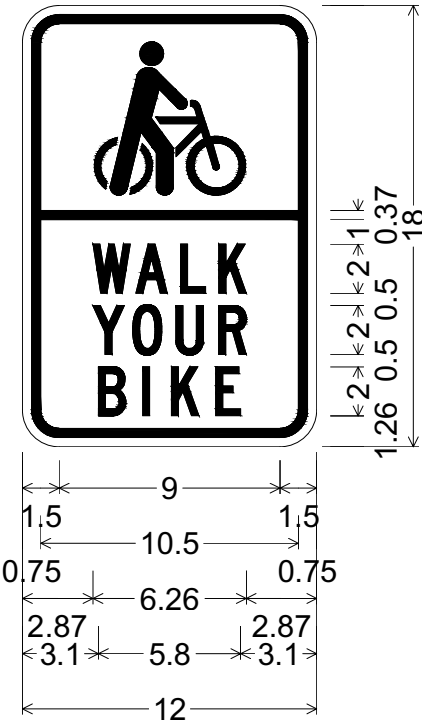
HSH PROJECT NUMBER	DATE	DRAWN BY	CHKD. BY	APPRVD. BY	SHEET NO.	TOTAL SHEETS
2022055	06/19/23	AE	MD	RL	12	14

6/19/2023 L:\2025\022055_CAD_Preliminary Design\Project Drawing Data\Plan Sheet Files\Plan Sheet DWG\022055_TR (Pmnt.Mk).dwg
 Last Saved By: MSAV\AVONK
 Printed By: Michaela Sigart

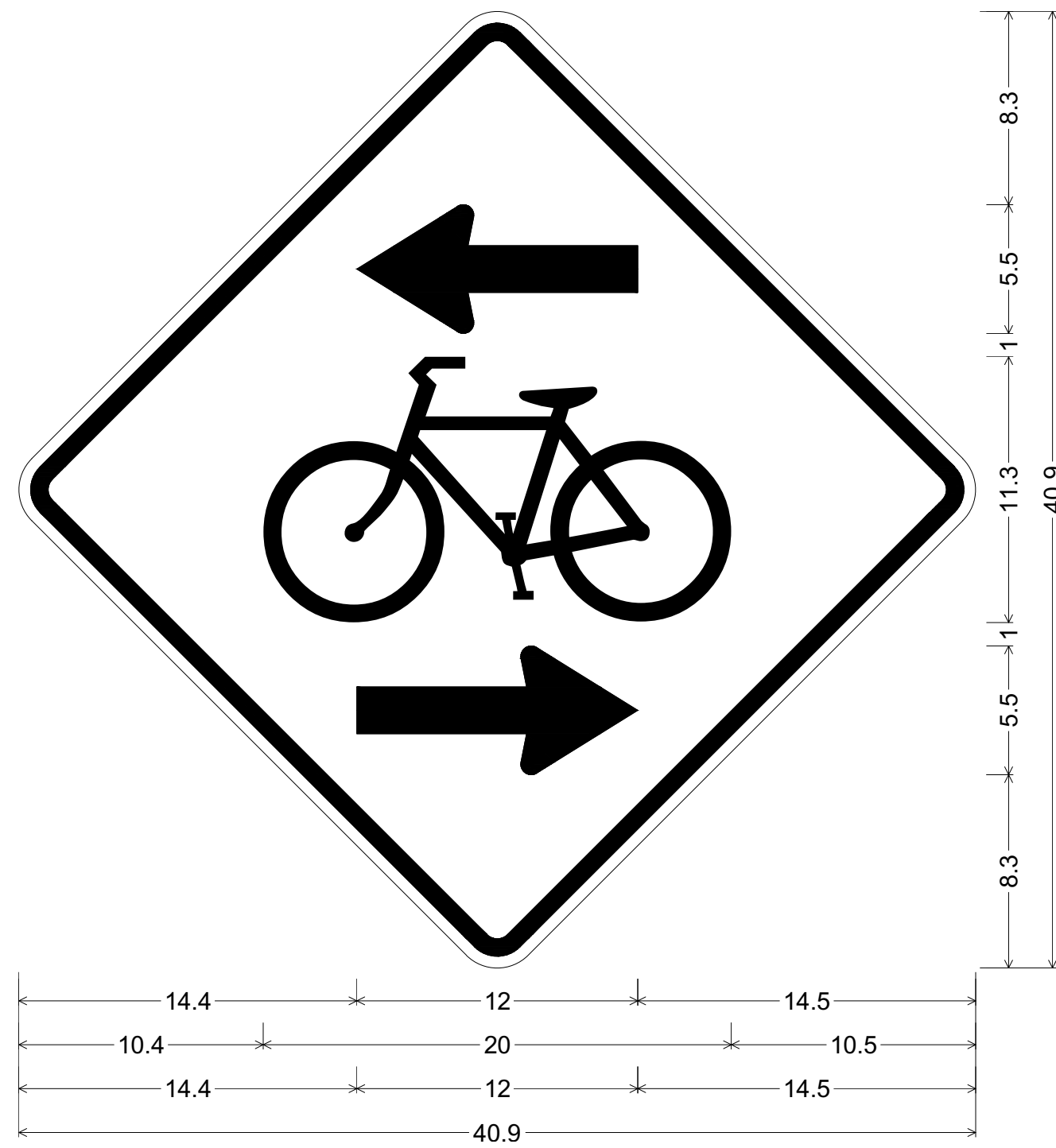
TRAFFIC SIGN SUMMARY

IDENTIFICATION NUMBER	SIZE OF SIGN		TEXT	TEXT DIMENSIONS (INCHES)			NUMBER OF SIGNS REQUIRED	COLOR			POST SIZE AND NUMBER REQUIRED	UNIT AREA (S.F.)	TOTAL AREA (S.F.)
	WIDTH	HEIGHT		LETTER HEIGHT	VERTICAL SPACING	ARROW RTE. MKR.		BACKGROUND	LEGEND	BORDER			
D1-1b	36"	12"		SEE DETAIL ON RIGHT			1	GREEN	WHITE	WHITE	MOUNT ON P5 (1)	3.00	3.00
D1-2b	36"	12"		SEE DETAIL ON RIGHT			1	GREEN	WHITE	WHITE	MOUNT ON P5 (1)	3.00	3.00
D1-3b	36"	18"		SEE DETAIL ON RIGHT			1	GREEN	WHITE	WHITE	MOUNT ON P5 (1)	4.50	4.50
R1-1	30"	30"		①	①	①	1	RED	WHITE	WHITE	MOUNT ON P5 (1)	6.25	6.25
R1-6	12"	36"		①	①	①	4	WHITE/ FLUORESCENT YELLOW-GREEN	BLACK	BLACK	MOUNT BACK TO BACK ON QUICK RELEASE SURFACE MOUNT BASE (2)	3.00	12.00
R3-7bP	24"	12"		①	①	①	1	GREEN	WHITE	WHITE	MOUNT ON P5 (1)	2.00	2.00
R5-1	30"	30"		①	①	①	1	RED/WHITE	WHITE	WHITE	MOUNT ON P5 (1)	6.25	6.25
R7-1	12"	18"		①	①	①	1	WHITE	RED	RED	MOUNT ON P5 (1)	1.50	1.50
SP-1	12"	18"		②	②	②	10	GREEN	WHITE	WHITE	MOUNT ON P5 (10)	1.50	15.00
SP-2	12"	18"		SEE DETAIL ON LEFT			2	WHITE	BLACK	BLACK	MOUNT ON P5 (1)/ MOUNT W/SP-2 (1)	1.50	3.00
W11-1	30"	30"		①	①	①	1	FLUORESCENT YELLOW-GREEN	BLACK	BLACK	MOUNT ON P5 (1)	6.25	6.25
W11-1A	30"	30"		SEE DETAIL ON LEFT			1	FLUORESCENT YELLOW-GREEN	BLACK	BLACK	MOUNT ON P5 (1)	6.25	6.25
W13-1P	18"	18"		①	①	①	4	YELLOW	BLACK	BLACK	MOUNT W/ W17-1 (4)	2.25	9.00
W17-1	24"	24"		①	①	①	16	YELLOW	BLACK	BLACK	MOUNT ON P5 (16)	4.00	64.00
W16-9P	24"	12"		①	①	①	1	YELLOW	BLACK	BLACK	MOUNT W/W17-1 (1)	2.00	2.00

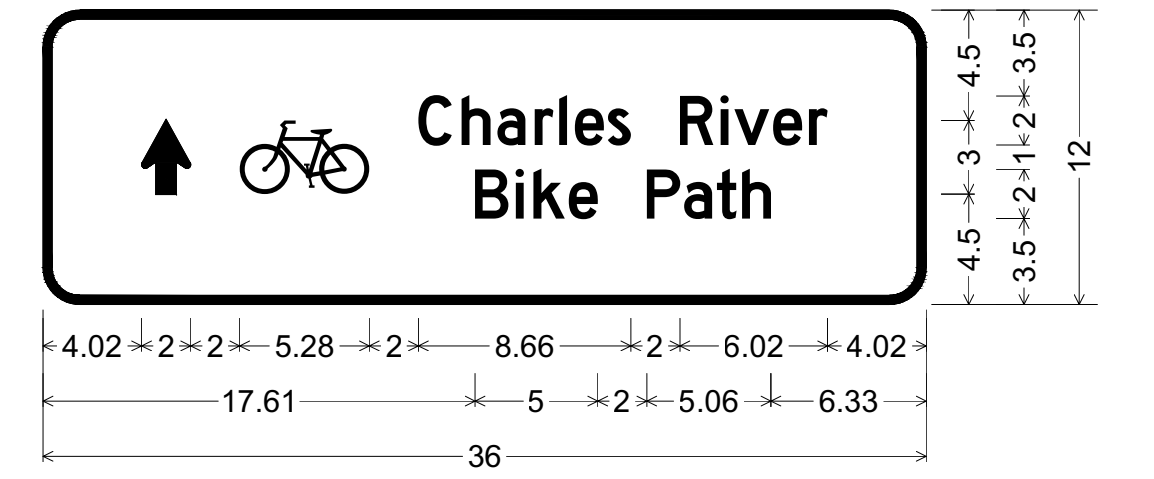
- ① SEE MUTCD 2009 EDITION, 2004/2012 STD. HWY. SIGNS AND SECTION M9.30.0. TYPE III OF THE MASSDOT STANDARD SPECIFICATION FOR TEXT DIMENSIONS AND COLOR.
- ② SIGN SPECIFICATION SHALL BE PROVIDED TO THE CONTRACTOR BY THE CITY OF NEWTON.



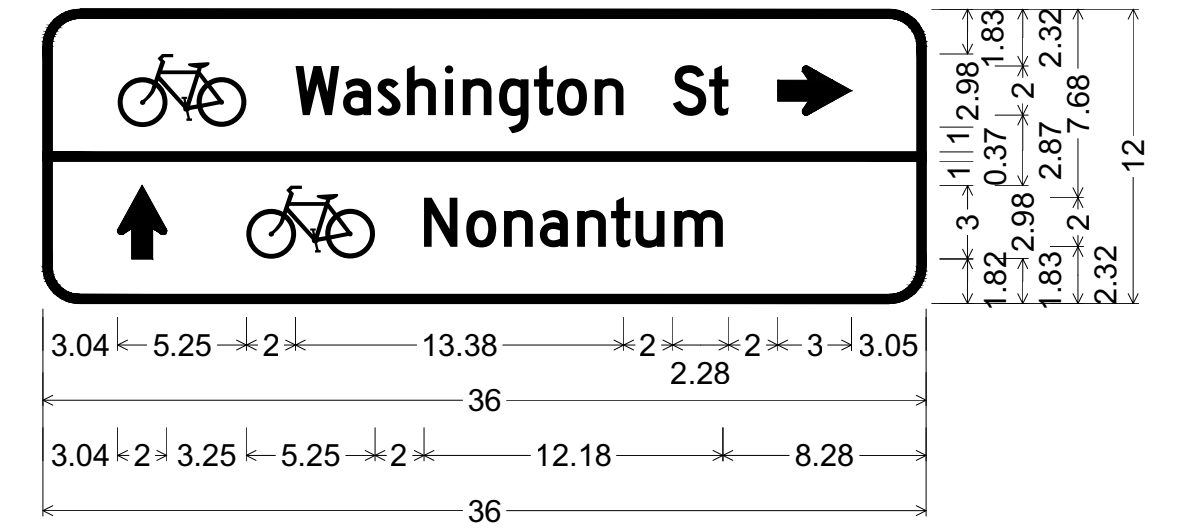
SP-2 12x18;
1.50" Radius, 0.38" Border, 0.38" Indent, Black on, White;
Symbol RG025;
"WALK", C 2K specified length;
"YOUR", C 2K specified length;
"BIKE", C 2K specified length;



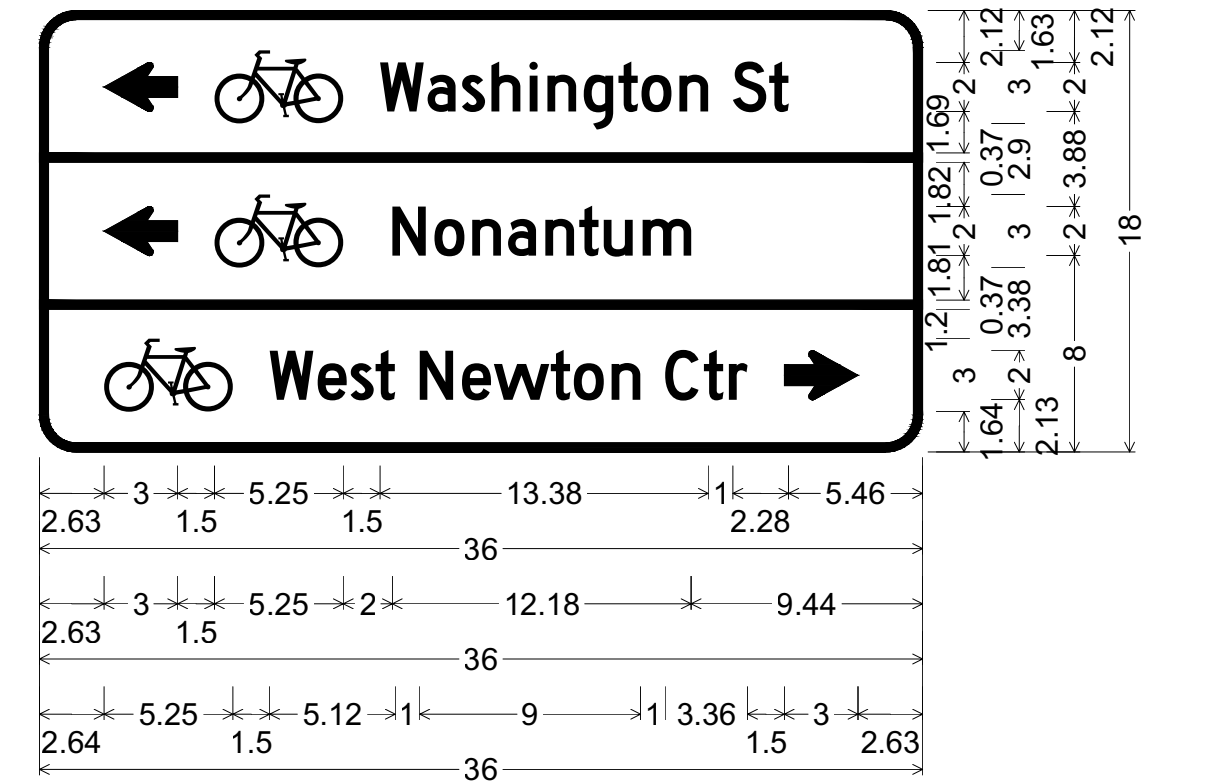
W11-1A_30x30;
30.0" across sides 1.9" Radius, 0.8" Border, 0.5" Indent, Black on, Fluorescent yellow;
Standard Arrow Custom 12.0" X 5.5" 180"; Symbol RG025;
Standard Arrow Custom 12.0" X 5.5" 0°;



D1-1b
1.50" Radius, 0.38" Border, White on, Green;
Standard Arrow Custom 3.50" X 2.00" 90°;
Symbol RG025; "Charles River", D 2K;
"Bike Path", D 2K;



D1-2b
1.50" Radius, 0.38" Border, White on, Green;
Symbol RG025; "Washington St", D 2K;
Standard Arrow Custom 3.00" X 2.00" 0°;
Standard Arrow Custom 3.00" X 2.00" 90°;
Symbol RG025; "Nonantum", D 2K;



D1-3b
1.50" Radius, 0.38" Border, White on, Green;
Standard Arrow Custom 3.00" X 2.00" 180°;
Symbol RG025; "Washington St", D 2K;
Standard Arrow Custom 3.00" X 2.00" 180°;
Symbol RG025; "Nonantum", D 2K; Symbol RG025;
"West Newton Ctr", D 2K;
Standard Arrow Custom 3.00" X 2.00" 0°;

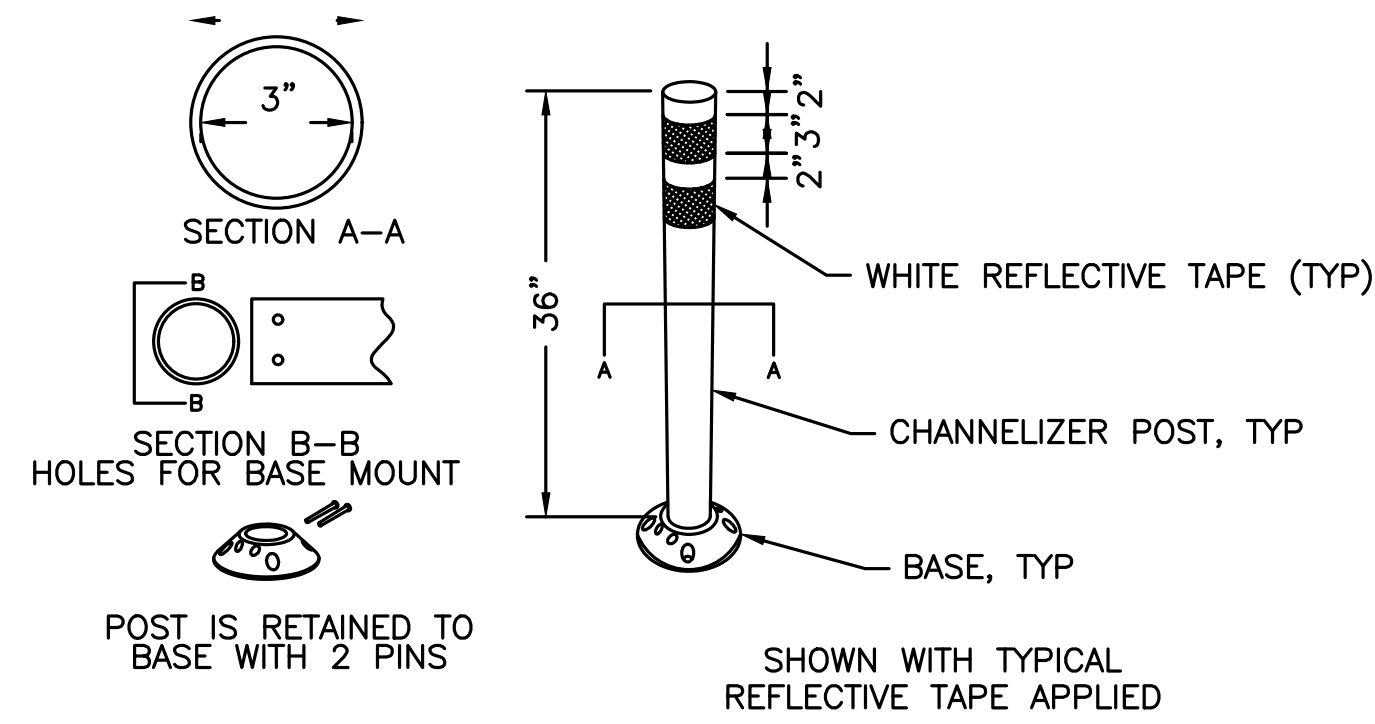
neighborwaysdesign



HOWARD STEIN HUDSON
11 Beacon Street, Suite 1010
Boston, MA 02108
www.hshassoc.com

NEWTON ALBEMARLE TRAFFIC CALMING TRAFFIC SIGN SUMMARY

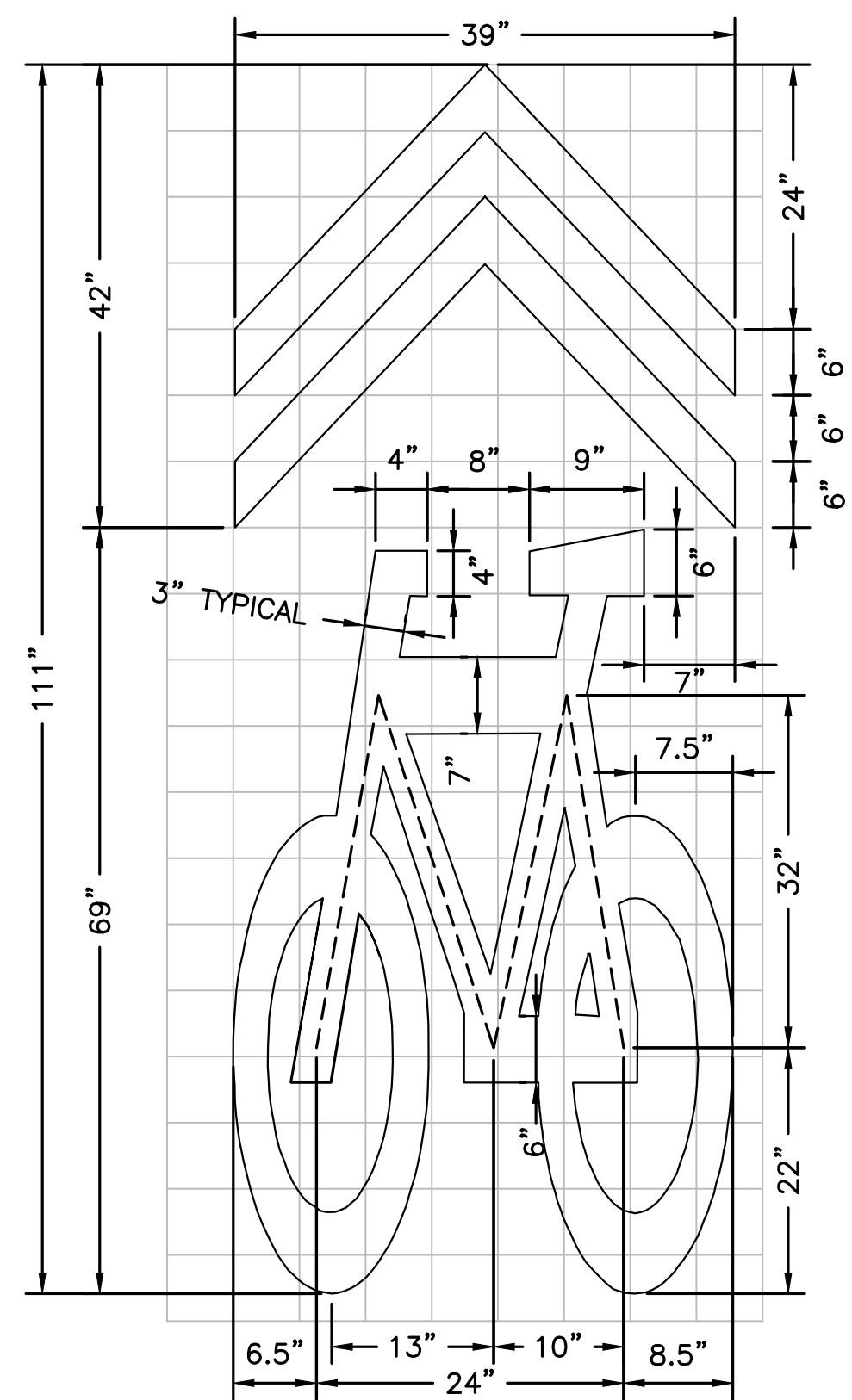
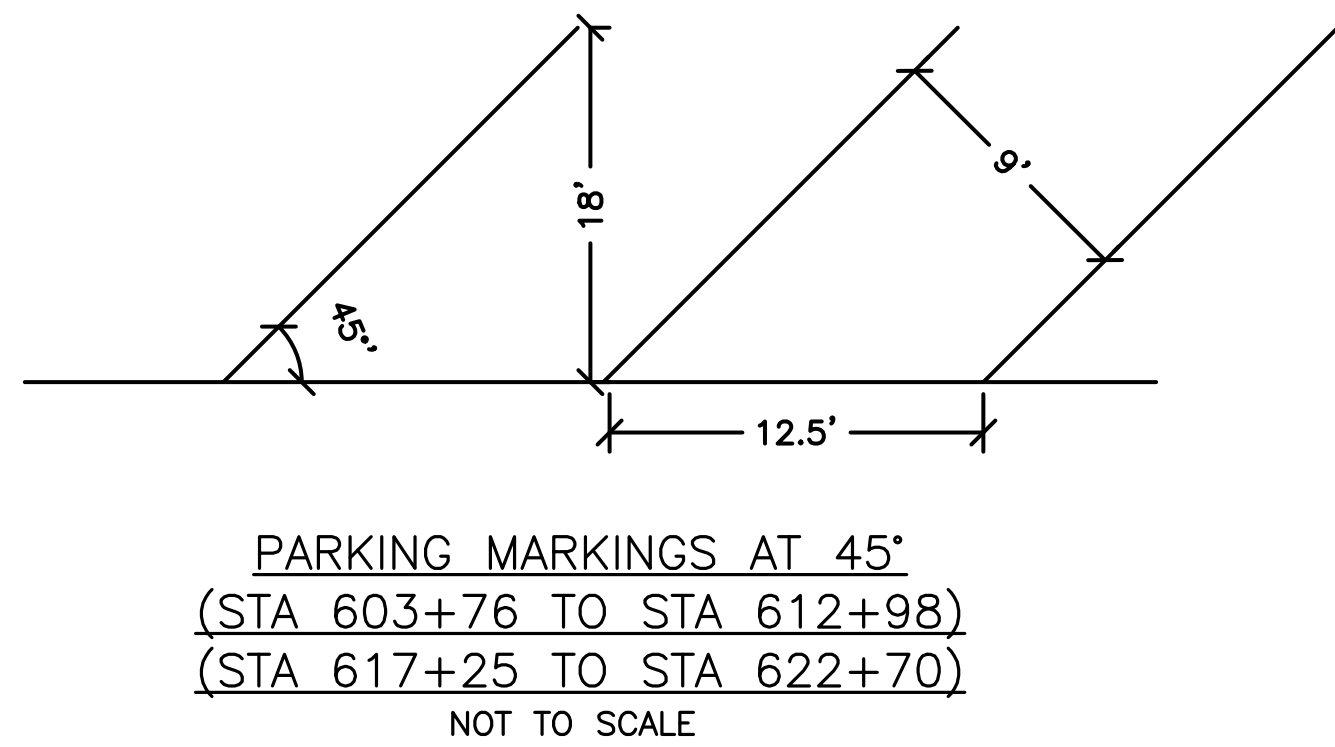
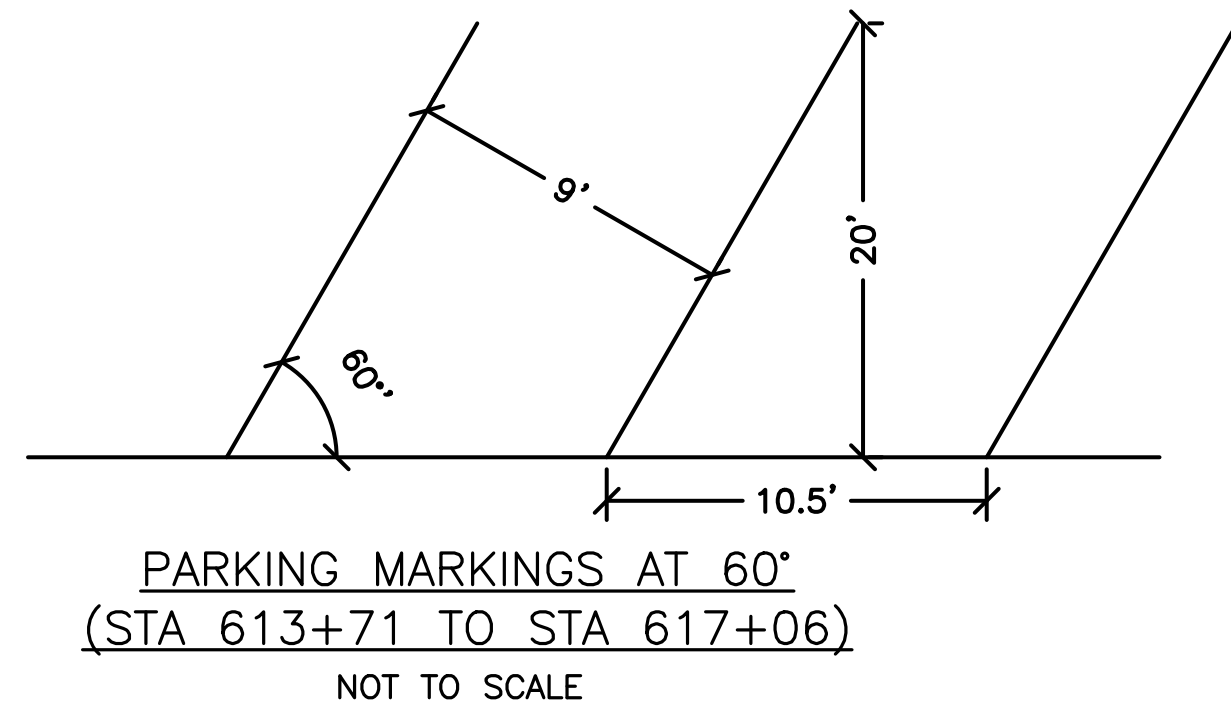
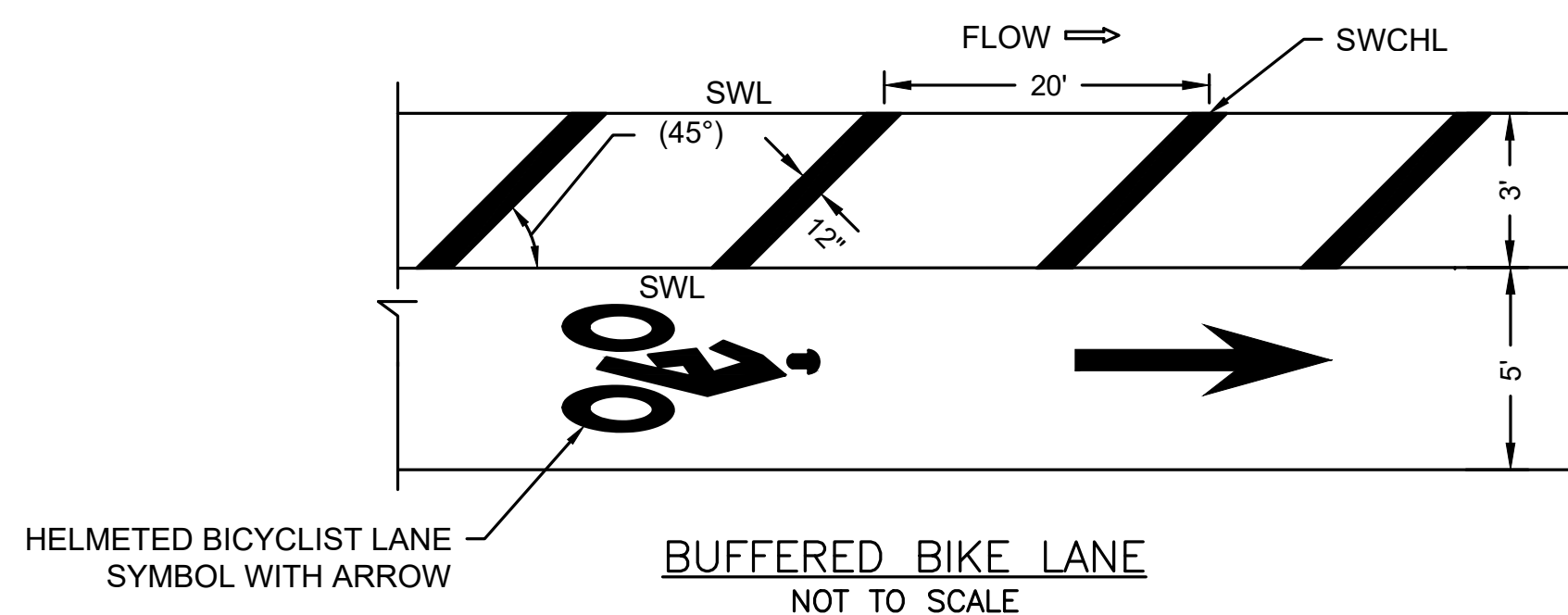
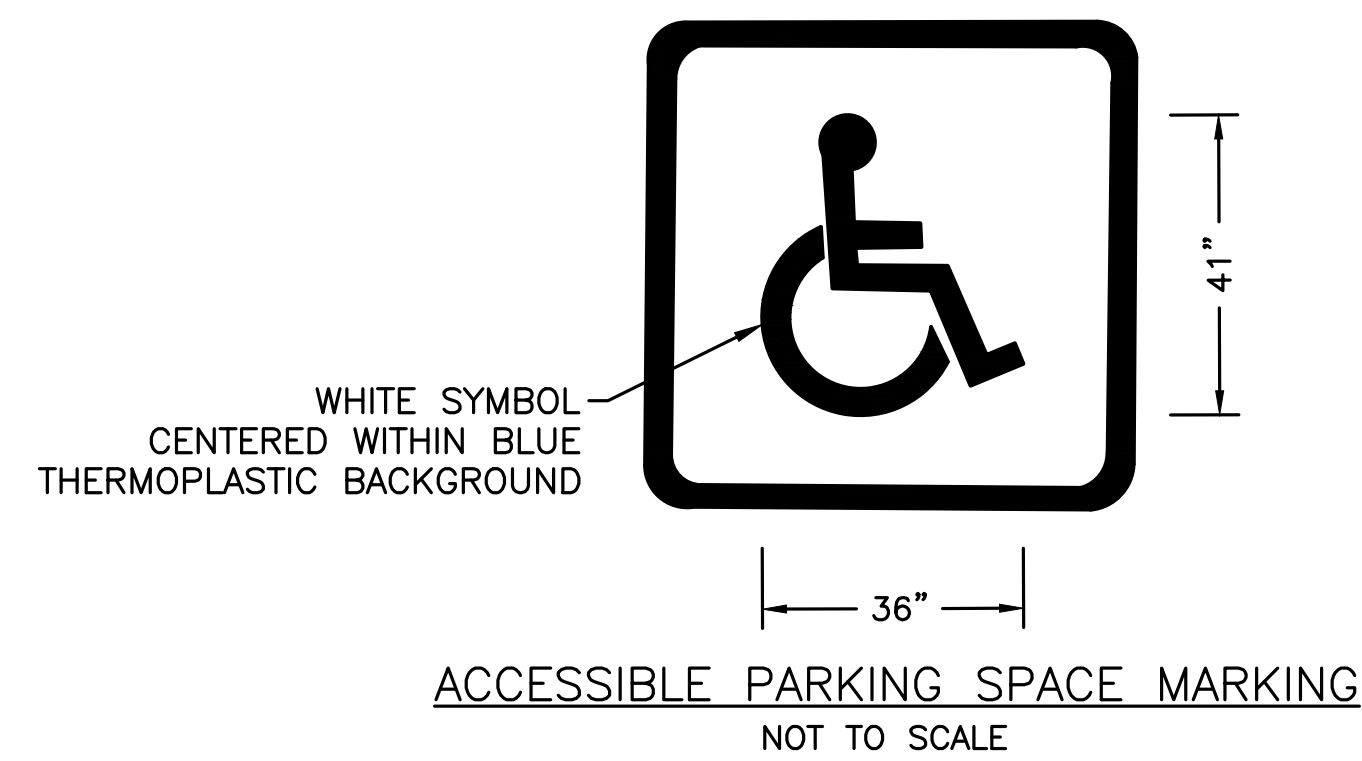
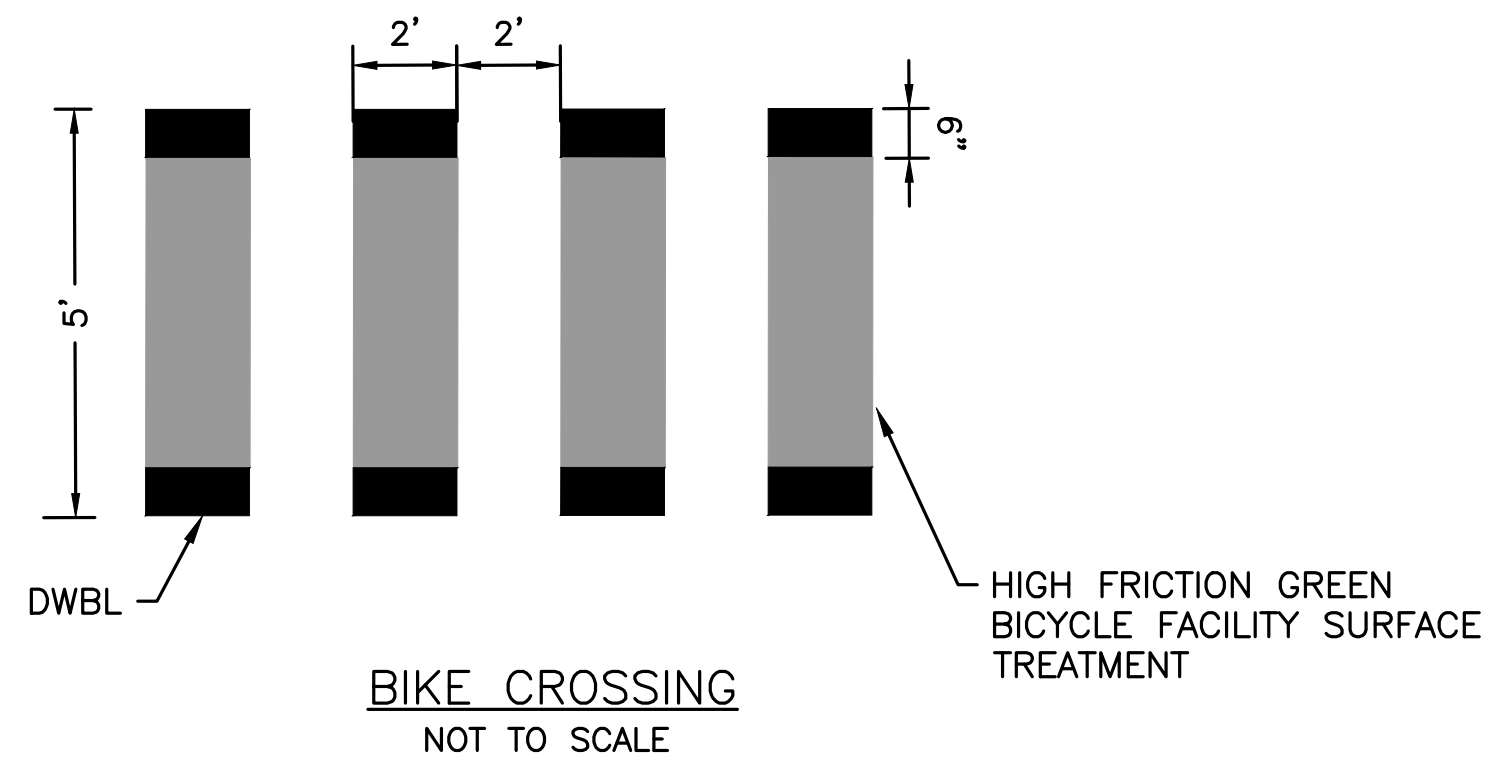
HS PROJECT NUMBER	DATE	DRAWN BY	CHKD. BY	APPRVD. BY	SHEET NO.	TOTAL SHEETS
2022055	06/19/23	AE	JL	RL	13	14



NOTES:

1. INSTALLATION TO BE COMPLETED IN ACCORDANCE WITH MANUFACTURER'S SPECIFICATIONS.
2. DIMENSIONS, MATERIALS, AND ATTACHMENTS MAY VARY BETWEEN MANUFACTURERS.
3. COLOR OF POST SHALL BE WHITE UNLESS NOTED ON PLANS
4. SUGGESTED MANUFACTURERS INCLUDE: PEXCO, FILTRONA EXTRUSIONS, SAFE-HIT, CARSONITE, COMPOSITES, QWICK KURB, BENT MANUFACTURING, AND IMPACT RECOVERY SYSTEMS.

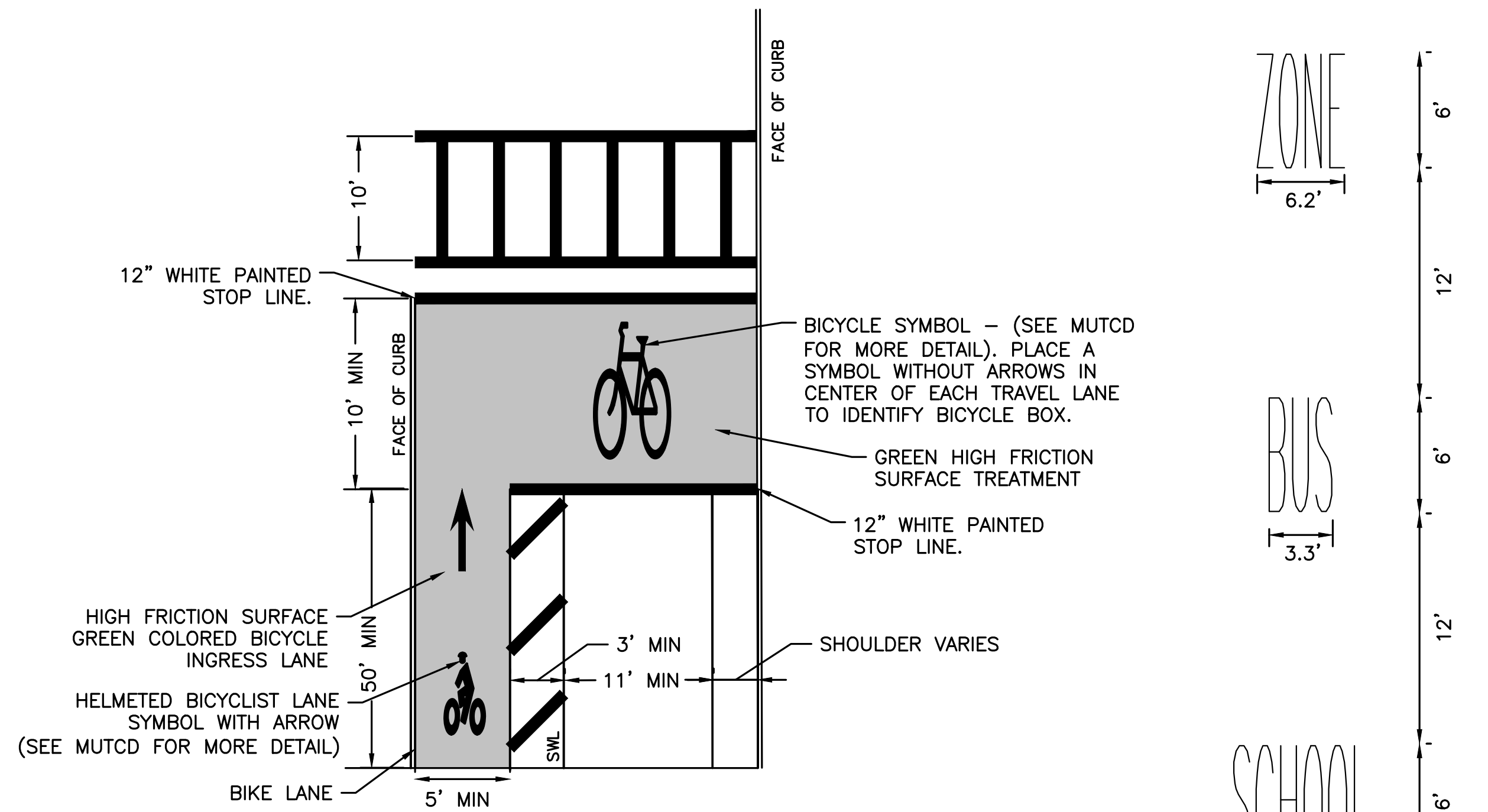
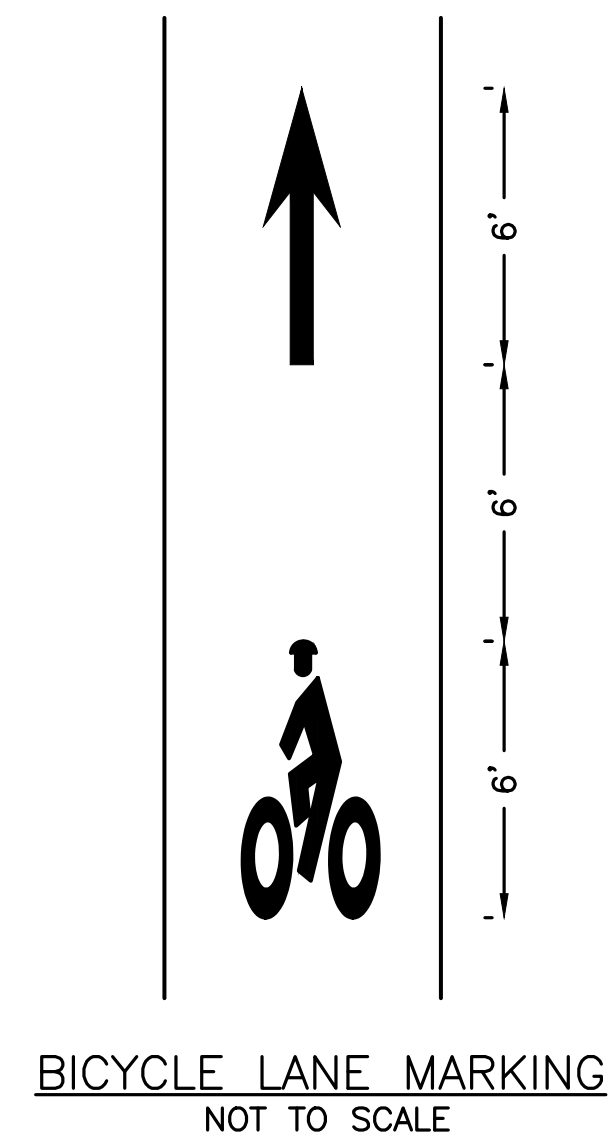
TRAFFIC SEPARATOR 36" FLEXPOST DETAIL
NOT TO SCALE



NOTES:

1. IN LOCATIONS WITH ON-STREET PARKING, SHARED LANE MARKING SYMBOLS SHALL BE PLACED SO THAT THE CENTER IS A MINIMUM OF 11 FEET FROM THE ADJACENT FACE OF CURB.
2. IN LOCATIONS WITHOUT ON-STREET PARKING, SHARE LANE MARKING SYMBOLS SHALL BE PLACED SO THAT THE CENTER IS 4 FEET FROM THE ADJACENT FACE OF CURB.
3. IF LOCATED IN A TURN LANE, SHARED LANE MARKING SYMBOLS SHALL BE CENTERED IN THE LANE.
4. DO NOT PLACE SYMBOLS ON LANE LINES.
5. SHARED LANE SYMBOLS SHALL BE PLACED A MAXIMUM OF 500 FEET APART.

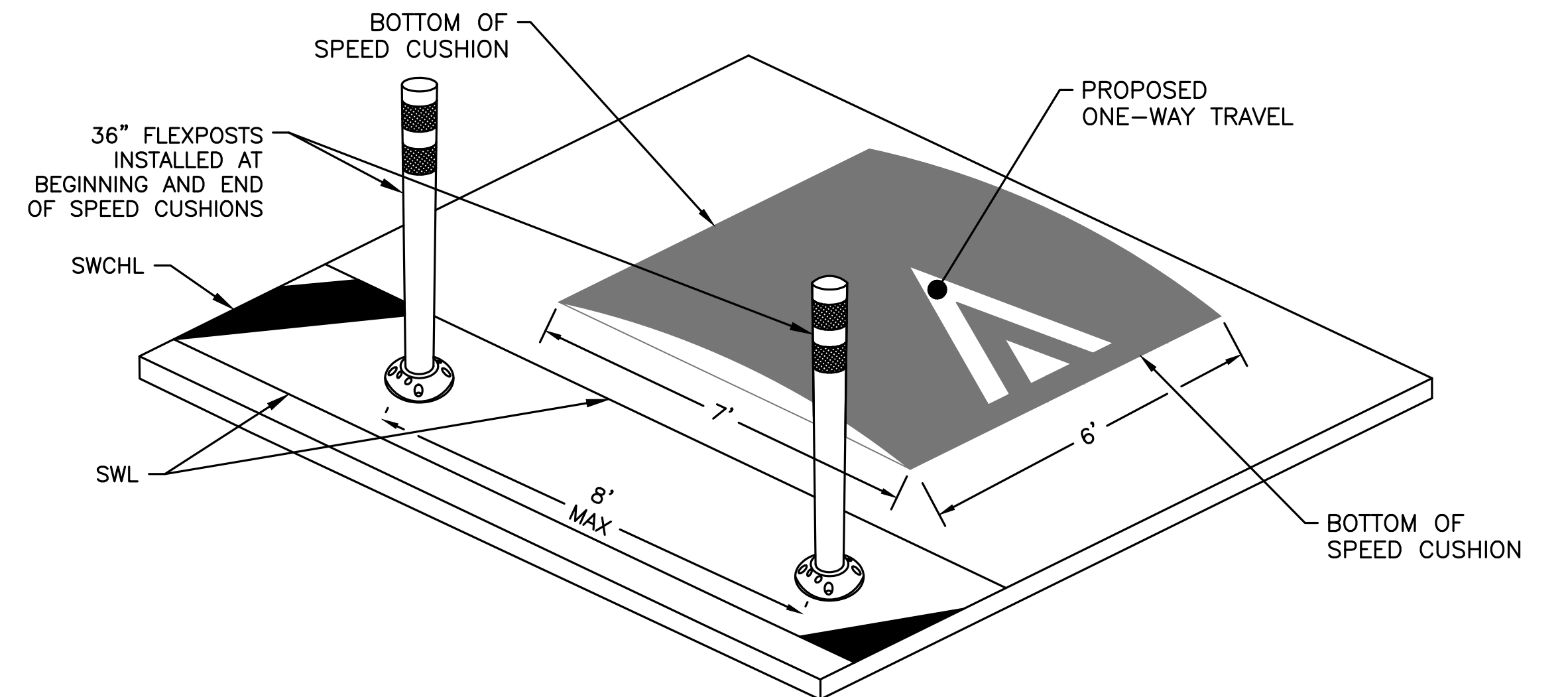
SHARED LANE SYMBOL DETAIL
NOT TO SCALE



NOTES:

1. ALL 12" LINES SHALL BE APPLIED IN ONE APPLICATION, NO COMBINATION OF LINES (TWO - 6" LINES) WILL BE ACCEPTED.
2. DESIGN PLANS SHOULD BE CONSULTED FOR VARIATIONS.

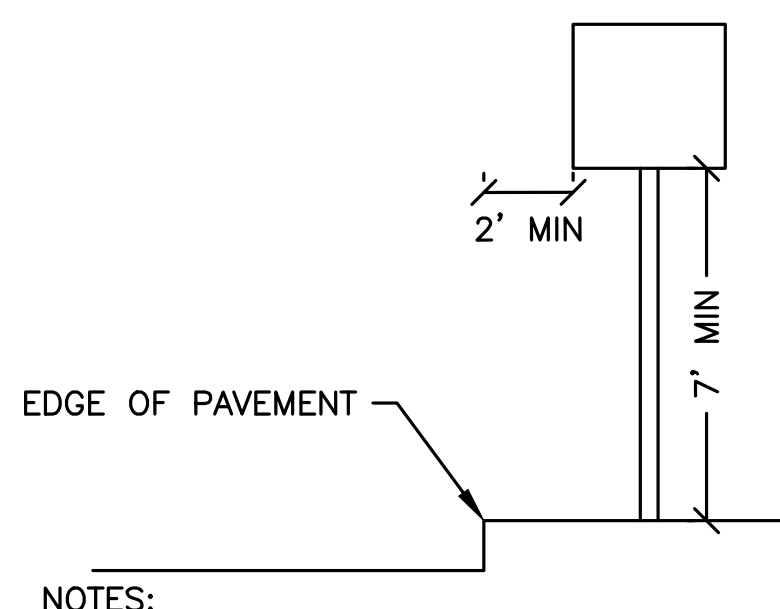
TYPICAL BIKE BOX
NOT TO SCALE



NOTES:

1. SPEED CUSHION SHALL BE CENTERED IN TRAVEL LANE UNLESS OTHERWISE SPECIFIED ON PLANS.
2. FLEXPOSTS SHALL BE CENTERED IN BUFFER UNLESS OTHERWISE SPECIFIED ON PLANS.

SPEED CUSHION DETAIL
NOT TO SCALE



NOTES:

1. SIGN AND POST INSTALLATION SHALL NOT OBSTRUCT PEDESTRIAN CLEAR PATH, MAINTAINING A MINIMUM OF 36" OF CLEAR SPACE PER ADA STANDARDS FOR ACCESSIBLE DESIGN.

SIGN AND POST INSTALLATION
NOT TO SCALE

neighborwaysdesign



HOWARD STEIN HUDSON
11 Beacon Street, Suite 1010
Boston, MA 02108
www.hshassoc.com

NEWTON ALBEMARLE TRAFFIC CALMING CONSTRUCTION DETAILS

HSH PROJECT NUMBER	DATE	DRAWN BY	CHKD. BY	APPRVD. BY	SHEET NO.	TOTAL SHEETS
2022055	06/19/23	AK	MD	RL	14	14