

ASSESSORS: NEWTON: PARCEL ID 63033 0010
BROOKLINE: PARCEL ID 282-13-00

REFERENCES: DEED BOOK 25193, PAGE 342 (NORFOLK)
DEED BOOK 50165, PAGE 254 (MIDDLESEX)
PLAN BOOK 54, PAGE 2330 (NORFOLK)
PLAN IN BOOK 2640, PAGE 372 (NORFOLK)

OWNER OF RECORD: ALAN FLINT & CHRISTINE GRECO

NOTES:
1) ELEVATIONS SHOWN HEREON REFER TO BROOKLINE CITY BASE. PROJECT SOURCE BENCHMARK IS THE BOTTOM CENTER INVERT OF THE DRAIN MANHOLE SHOWN HEREON AS BENCHMARK #1.
2) UNDERGROUND UTILITIES SHOWN HEREON ARE COMPILED FROM FIELD LOCATIONS OF STRUCTURES AND FROM AVAILABLE RECORD INFORMATION ON FILE AT THE CITY ENGINEERING DEPARTMENT AND UTILITY COMPANIES. OTHER UNDERGROUND UTILITIES MAY EXIST. IT SHALL BE THE RESPONSIBILITY OF THE DESIGN ENGINEER AND THE CONTRACTOR TO VERIFY THE LOCATION, SIZE & ELEVATION OF ALL UTILITIES WITHIN THE AREA OF PROPOSED WORK AND TO CONTACT "DIG-SAFE" AT 811 AT LEAST 72 HOURS PRIOR TO ANY EXCAVATION, DEMOLITION OR CONSTRUCTION.
3) THERE IS FIELD EVIDENCE OF AN UNDERGROUND SPRINKLER SYSTEM; LOCATION OF SAID SYSTEM IS UNKNOWN.
4) LOCATION OF BROOKLINE / NEWTON CITY LINE SHOWN HEREON COMPILED FROM PLANS OF RECORD.
5) FULL MAPPING OF UTILITY SERVICE CONNECTIONS TO THE BUILDING NOT SHOWN HEREON DUE TO INCOMPLETE DATA AVAILABLE FROM PUBLIC AND PRIVATE SOURCES.
6) FIELD EVIDENCE OF UTILITIES ASSOCIATED WITH THE IN-GROUND POOL IS SHOWN HEREON. LOCATION OF SAID LINES IS UNKNOWN.

162
MIDDLESEX
ROAD

Chestnut Hill, Massachusetts

PREPARED FOR:

HART
ASSOCIATES,
INC.

50 Church Street
Belmont, Massachusetts 02478-1301

HANCOCK
ASSOCIATES

Civil Engineers

Land Surveyors

Wetland Scientists

185 CENTRE STREET, DANVERS, MA 01923
VOICE (978) 777-3050, FAX (978) 774-7816
WWW.HANCOCKASSOCIATES.COM

LEGEND

- 234 --- SURFACE CONTOUR
- x-x-x- EDGE OF PAVEMENT
- o-o-o- CHAIN LINK or WIRE FENCE
- w-w-w- WOOD FENCE
- 26.75- CURB LINE WITH TOP AND BOTTOM CURB ELEVATION
- 26.25- SEWERLINE & MANHOLE WITH PIPE SIZE, MATERIAL & FLOW DIRECTION
- SS-SD- DRAINLINE WITH PIPE SIZE, MATERIAL & FLOW DIRECTION, CATCHBASIN AND MANHOLE
- W-6"W- WATER MANHOLE, WATER MAIN WITH SIZE, TEE, GATE VALVE & FIRE HYDRANT
- C-10"DI- GAS MAIN WITH SIZE & GATE VALVE
- OHW- UTILITY POLE WITH DESIGNATION, OVERHEAD WIRES AND GUY POLE
- E- ELECTRIC MANHOLE & UNDERGROUND ELECTRIC LINES
- T- TELEPHONE MANHOLE & UNDERGROUND TELEPHONE LINES
- EDGE OF VEGETATION
- EDGE LAWN
- 28.81- 23.23- RETAINING WALL WITH TOP & BOTTOM BANK ELEVATIONS

- * 232.6 SPOT ELEVATION
- 26.8 PROMINENT DECIDUOUS TREE WITH ELEVATION, SIZE AND SPECIES
- 26.8 PROMINENT CONIFEROUS TREE WITH ELEVATION, SIZE AND SPECIES

- ☆ LIGHT POLE
- IRRIGATION CONTROL
- SIGN
- 2-L TWO LIMBED
- EMTR ELECTRIC METER
- 6"WD 6 FOOT HIGH WOOD FENCE
- (R) RECORD
- (C) CALCULATED
- (R/H) RECORD AND HELD
- (M) FIELD MEASURED
- DHSB DRILL HOLE IN STONE BOUND

TREE ABBREVIATIONS

- M MAPLE
- O OAK
- P PINE
- C CEDAR
- SP SPRUCE
- HE HEMLOCK

NO.	BY	DATE	ISSUE/REVISION DESCRIPTION
3	JMS	9/28/21	ADD ROOF ELEVATIONS
2	JMS	9/9/21	ADD DEED PARCEL BREAK-DOWN
1	JMS	4/14/17	ADD TREES ALONG SWLY BOUNDARY

DATE: 10/12/2016 DRAWN BY: JMS
SCALE: 1" = 10' CHECK BY:

EXISTING
CONDITIONS
PLAN OF LAND
IN
CHESTNUT HILL, MA
(BROOKLINE/NEWTON)

PLST DATE: Sep 28, 2021 12:57 pm
PATH: F:\GIS\3D Projects\2013_Greco - Chestnut Hill\DWG\

DWG: 20123SV2.dwg

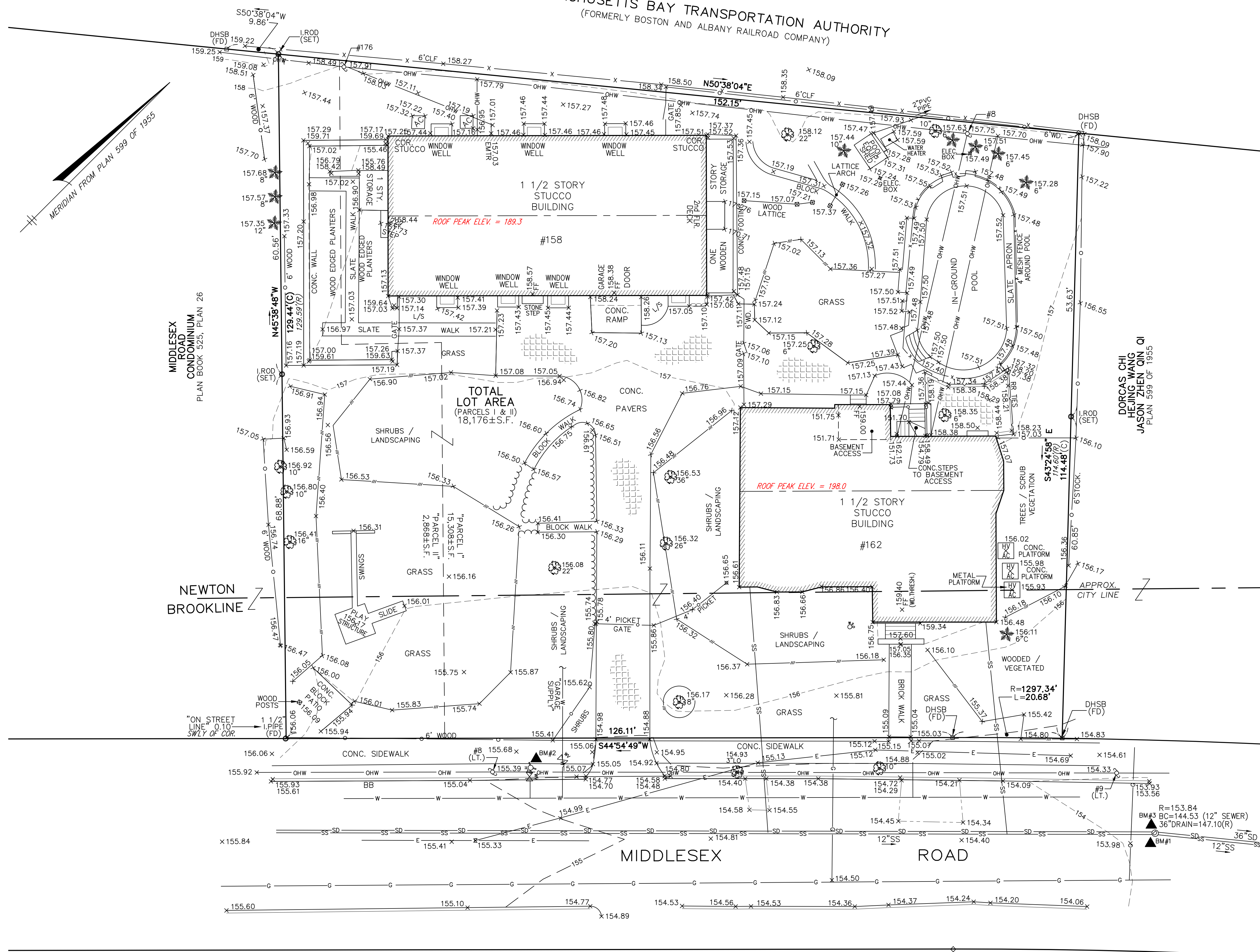
LAYOUT: EC

SHEET: 1 OF 1

PROJECT NO.: 20123



MASSACHUSETTS BAY TRANSPORTATION AUTHORITY
(FORMERLY BOSTON AND ALBANY RAILROAD COMPANY)



ELEVATION BENCH MARKS		
DATUM: BROOKLINE CITY BASE		
NO.	DESCRIPTION	ELEV.
1.	BOTTOM CENTER SEWER INVERT	144.53
2.	FIRE HYDRANT; BOLT OVER MAIN OUTLET	156.99
3.	SEWER MANHOLE RIM, PRICK PUNCH (SET)	153.84