



Raymond Design Associates, Inc. Architects & Planners

60 Ledgewood Place Rockland MA 02570



FOR SITE PLAN APPROVAL

NEWTON COMMONWEALTH GOLF COURSE Maintenance Facilities Improvements & Renovations 212 Kenrick Street, Newton, MA 02458

SITE LEGEND, NOTES & DETAILS

Revisions: No. Date Description

Drawn By: NCK Checked By: CMG Approved By: CMG

Drawing Scale: AS NOTED

Date: SEPTEMBER 15, 2021

C0.1

EROSION & SEDIMENT CONTROL NARRATIVE

- 1. EROSION CONTROL MEASURES SHOWN HEREIN ARE A MINIMUM. CONTRACTOR SHALL FURNISH THE SERVICES OF AN INDEPENDENT PROFESSIONAL ENGINEER OR A CERTIFIED PROFESSIONAL IN EROSION AND SEDIMENT CONTROL TO PREPARE A STORMWATER POLLUTION PREVENTION PLAN (SWPPP)...

SITE OPERATIONAL PROCEDURES

- OPERATION PROCEDURES DURING CONSTRUCTION SHALL BE BY THE CONTRACTOR AFTER PROJECT COMPLETION OPERATIONAL PROCEDURES SHALL BE THE RESPONSIBILITY OF THE OWNER AND ARE AS FOLLOWS: 1. GOOD HOUSE KEEPING AND MATERIAL MANAGEMENT REDUCES THE RISK OF SPILLS OR OTHER ACCIDENTAL EXPOSURE OF MATERIALS AND SUBSTANCES TO STORMWATER RUNOFF...

STORMWATER SYSTEM MAINTENANCE NOTES

- THE DRAINAGE SYSTEMS ARE TO BE MONITORED THROUGHOUT THE ENTIRE CONSTRUCTION PERIOD BY THE CONTRACTOR. UPON COMPLETION OF THE PROJECT THE CONTRACTOR SHALL DO A FULL INSPECTION OF THE ENTIRE DRAINAGE SYSTEM TO VERIFY THE PROPER INSTALLATION AND FUNCTIONING OF THE FINAL MAINTENANCE CLEAN UP THE PROJECT MONITORING SHALL BE THE RESPONSIBILITY OF THE NEWTON CITY ENGINEER...

POST CONSTRUCTION MONITORING/MAINTENANCE PROCEDURES SHALL BE AS FOLLOWS (RESPONSIBILITY OF THE OWNER)

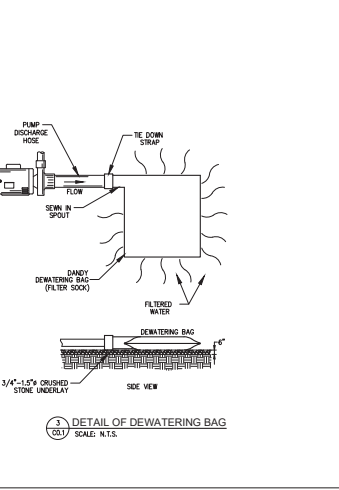
- 1. DRAIN MANHOLES: PARKING LOT, ROAD AND ALL ACCESS WAYS AND OUTLETS SHALL BE SWEEP CLEAN OF ALL DEBRIS. SWEEPING SHALL BE PERFORMED ON A WEEKLY BASIS. 2. CATCH BASINS AND DRAIN MANHOLES: ALL CATCH BASINS AND DRAIN MANHOLES SHALL BE INSPECTED TO ENSURE THEY HAVE ADEQUATE SUMP CAPACITY...

GENERAL NOTES

- 1. EXISTING CONDITIONS SHOWN WERE TAKEN FROM EXISTING CONDITIONS PLAN PREPARED BY BGC GROUP, INC. FOR RAINFALL DESIGN ASSOCIATES, INC. DATED SEPTEMBER 7, 2005. 2. CONTRACTOR SHALL RETAIN THE SERVICES OF A REGISTERED LAND SURVEYOR TO LAYOUT ON THE GROUND ALL NEW ELEMENTS OF CONSTRUCTION...

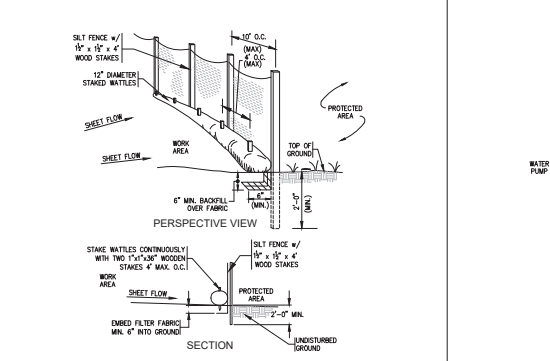
SITE ENTRANCE MAT DETAIL

NOTE: IN THE EVENT THE CONTRACTOR IS TO INCLUDE ADDITIONAL SITE ENTRANCES ONTO THE PROJECT SITE, THE CONTRACTOR SHALL FURNISH & INSTALL AT NO ADDITIONAL COST TO THE OWNER AND SHALL CONFORM WITH THE SITE ENTRANCE MAT DETAIL.



SITE LEGEND

Table with columns: EXISTING, NEW, and DESCRIPTION. It lists various site features such as storm drains, manholes, catch basins, and utility lines with their corresponding symbols and codes.



COMPOST WATTLE FILTER SOCK & FABRIC DETAIL

- 1. FILTER SOCK SHALL BE 12" DIAMETER STRAW WATTLE BY NORTH AMERICAN WATTLE OF APPROXIMATELY 1.5" LENGTH. 2. SOCKS TO BE FILLED WITH COMPACTED STRAW OR APPROVED EQUAL.

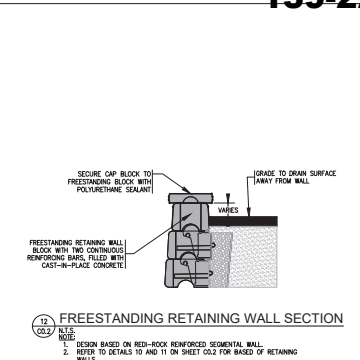


REVISIONS TO DATE  
FOR SITE PLAN APPROVAL

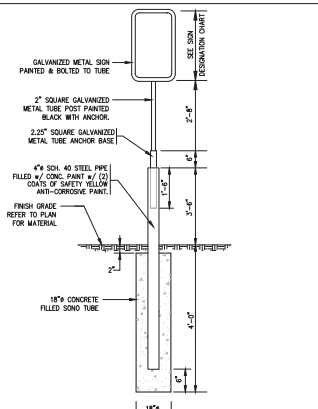
NEWTON COMMONWEALTH GOLF COURSE  
Maintenance Facilities Improvements & Renovations  
212 Kenrick Street, Newton, MA 02458  
SITE DETAILS

Revisions:  
No. Date Description

Drawn By:	NCK
Checked By:	CMG
Approved By:	CMG
Drawing Scale:	AS NOTED
Date:	SEPTEMBER 15, 2021



4. FREESTANDING RETAINING WALL SECTION  
N.T.S.  
DESIGN BASED ON RED-ROCK REINFORCED SEGMENTAL WALL. REFER TO DETAILS 10 AND 11 ON SHEET C0.2 FOR BARS OF RETAINING WALLS.

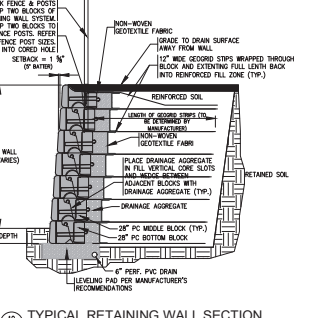


5. CONCRETE STOOP DETAIL @ DOORS  
N.T.S.

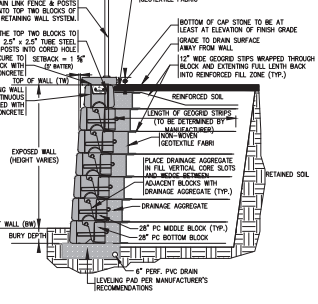
1. SITE SIGNAGE POST DESIGNATION & DIMENSION SCHEDULE  
N.T.S.

SIGN DESIGNATION	HEIGHT	WIDTH	SIGN
R1-1 (STOP)	30"	30"	
R7-8 (ACCESSIBLE PARKING)	18"	12"	
R7-8b (VAN ACCESSIBLE)	0"	12"	

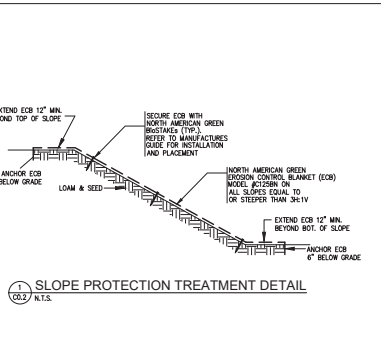
6. PROTECTIVE BOLLARD DETAIL  
N.T.S.  
NOTE:  
1. BOLLARD, GALVANIZED & PRIME COATED AND COVER BY SECTION 050500.  
2. WERE POST GUARDS TO BE FITTED TO THE DIAMETER OF THE POSTS, TWO REFLECTIVE SAFETY STRIPES ON EACH BOLLARD.  
3. WERE POST GUARDS SHALL BE STANDARD RAMPING POST BY STOP-UP SYSTEMS, INC., BOLLARDARD BY INDOPLAST, POST GUARD BY ENCORE COMMERCIAL PRODUCTS, INC. OR APPROVED EQUAL.



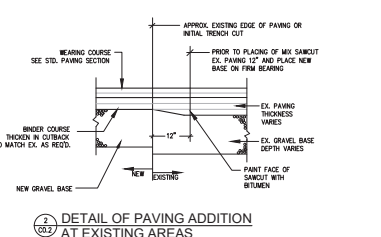
7. BITUMINOUS CONCRETE WALK DETAIL  
N.T.S.



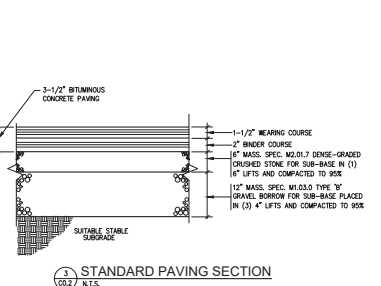
8. MANHOLE RISER DETAIL  
N.T.S.



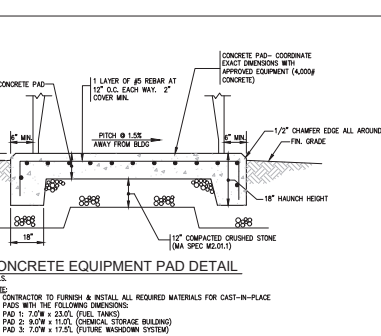
1. SLOPE PROTECTION TREATMENT DETAIL  
N.T.S.



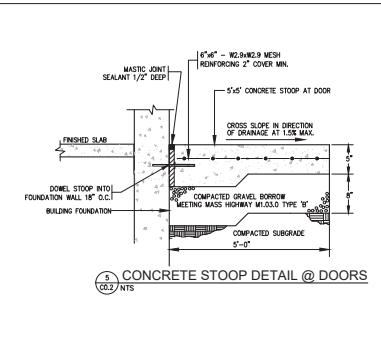
2. DETAIL OF PAVING ADDITION AT EXISTING AREAS  
N.T.S.



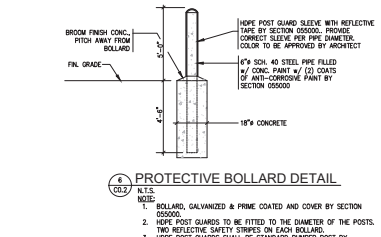
3. STANDARD PAVING SECTION  
N.T.S.



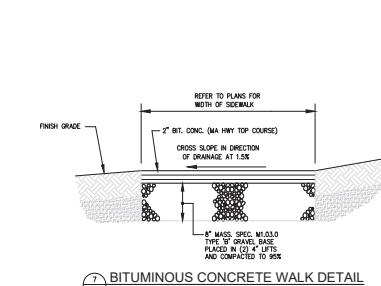
4. CONCRETE EQUIPMENT PAD DETAIL  
N.T.S.  
NOTE:  
1. CONTRACTOR TO FURNISH & INSTALL ALL REQUIRED MATERIALS FOR CAST-IN-PLACE PADS WITH THE FOLLOWING DIMENSIONS:  
PAD 1: 7.0' x 23.0' (FUEL TANKS)  
PAD 2: 8.0' x 17.5' (CHEMICAL STORAGE BUILDING)  
PAD 3: 7.0' x 17.5' (FUTURE WASH-DOWN SYSTEM)  
2. EXACT DIMENSIONS TO BE COORDINATED WITH THE APPROVED EQUIPMENT DIMENSIONS.



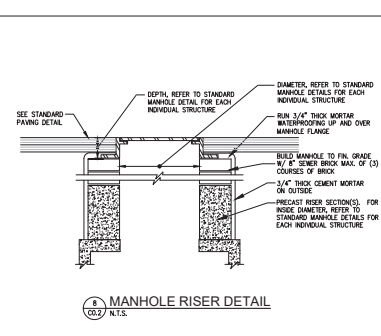
5. CONCRETE STOOP DETAIL @ DOORS  
N.T.S.



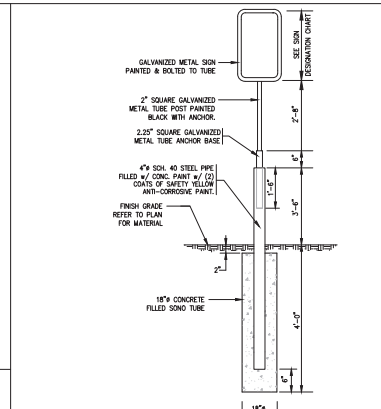
6. PROTECTIVE BOLLARD DETAIL  
N.T.S.  
NOTE:  
1. BOLLARD, GALVANIZED & PRIME COATED AND COVER BY SECTION 050500.  
2. WERE POST GUARDS TO BE FITTED TO THE DIAMETER OF THE POSTS, TWO REFLECTIVE SAFETY STRIPES ON EACH BOLLARD.  
3. WERE POST GUARDS SHALL BE STANDARD RAMPING POST BY STOP-UP SYSTEMS, INC., BOLLARDARD BY INDOPLAST, POST GUARD BY ENCORE COMMERCIAL PRODUCTS, INC. OR APPROVED EQUAL.



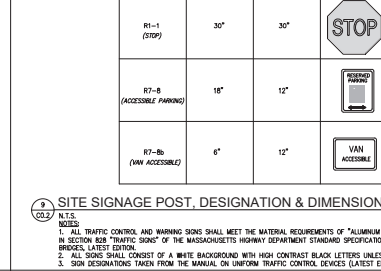
7. BITUMINOUS CONCRETE WALK DETAIL  
N.T.S.



8. MANHOLE RISER DETAIL  
N.T.S.



9. TYPICAL RETAINING WALL SECTION  
N.T.S.  
DESIGN BASED ON RED-ROCK REINFORCED SEGMENTAL WALL.



10. RETAINING WALL SECTION AT NORTH DRIVEWAY  
N.T.S.  
DESIGN BASED ON RED-ROCK REINFORCED SEGMENTAL WALL.



REVISIONS FOR SITE PLAN APPROVAL

NEWTON COMMONWEALTH GOLF COURSE  
Maintenance Facilities Improvements & Renovations  
212 Kenrick Street, Newton, MA 02458

SITE DETAILS

Revisions:

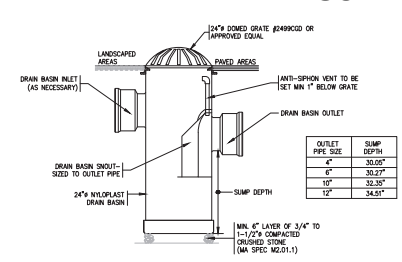
No. Date Description

Drawn By: NCK  
Checked By: CMG  
Approved By: CMG

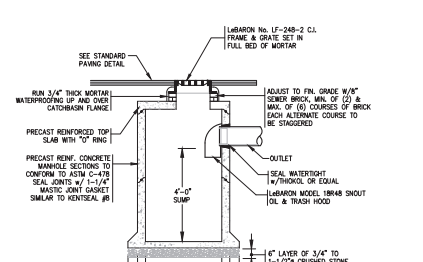
Drawing Scale: AS NOTED

Date: SEPTEMBER 15, 2021

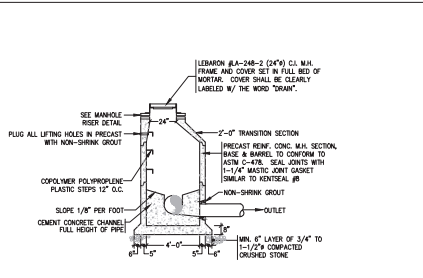
C0.3



13 PLASTIC YARD DRAIN INLET DETAIL  
N.T.S.  
NOTE:  
1. ALTERNATE MANUFACTURERS SHALL INCLUDE HARDS AND ASS. PEEK.  
2. ALL GRATES SHALL BE PERFECTION GRADE AND MEET THE REQUIREMENTS OF MAAB/ADL. DRAIN INSTALLMENT CONTROL GRACE AND ALL DRAIN MEET STRUCTURE SUPPORT & MAINTAIN ALL STRUCTURES ON A NEARLY BASE UNTIL SITE IS ENTIRELY STABILIZED.

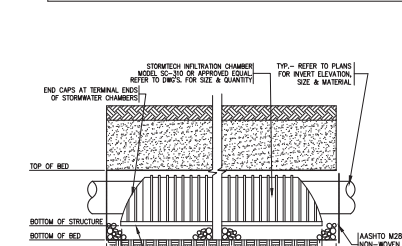


9 CATCH BASIN DETAIL  
N.T.S.

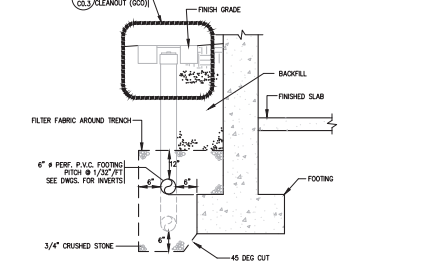


10 STANDARD DRAIN MANHOLE DETAIL  
N.T.S.

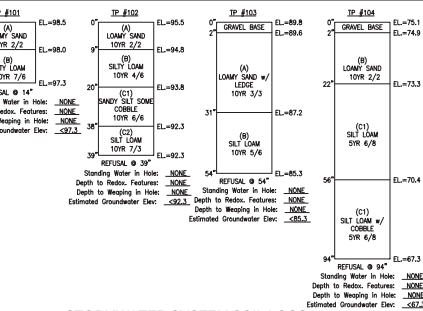
STRUCTURE	MIN. FIN. GRADE	FIN. IN ELEV.	INLET IN ELEV.	INLET OUT ELEV.	BOTTOM OF BED	BOTTOM OF STRUCTURE	TOP OF BED	DETAIL
SIB #1	73.88	70.50 (6\"/>						



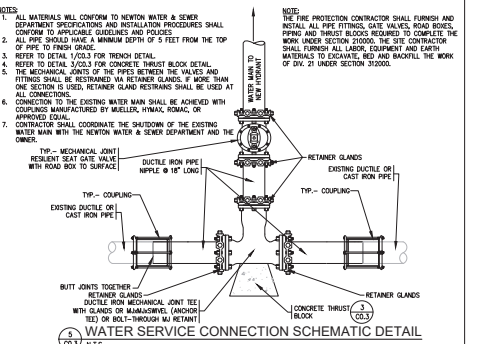
14 SUBSURFACE INFILTRATION CHAMBER BED SYSTEM DETAIL  
N.T.S.  
NOTE:  
1. REFER TO PLAN 1/C2.1 FOR LOCATIONS OF INSPECTION PORTS. CONTRACTOR TO FURNISH ALL MATERIAL AND LABOR TO CONNECT 6\"/>



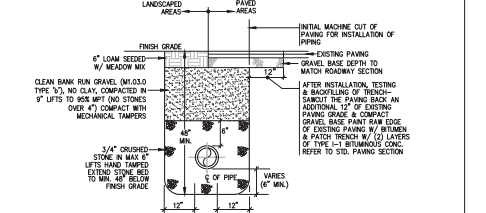
12 FOOTING DRAIN DETAIL  
N.T.S.  
NOTE:  
1. FURNISH & INSTALL GROUND CLEANOUTS AT START OF RUN, CHANGES IN DIRECTION GREATER THAN 45 DEGREES AND AT SET INTERVALS SEE GROUND CLEANOUT DETAIL.



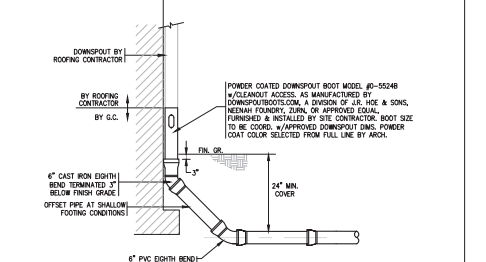
12 STORMWATER SYSTEM SOIL LOGS  
N.T.S.  
NOTE:  
1. TEST PITS #01 THROUGH #04 WERE PERFORMED ON SEPTEMBER 3, 2020 BY INDIAN C. NICKER, (C/GR/PA).



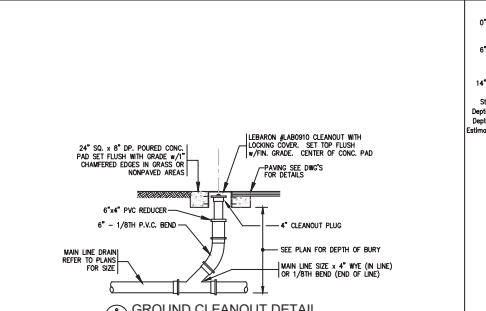
3 WATER SERVICE CONNECTION SCHEMATIC DETAIL  
N.T.S.



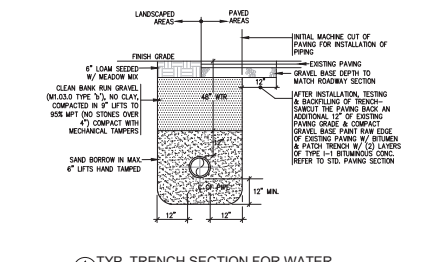
8 TYPICAL TRENCH SECTION FOR DRAINAGE & SEWER  
N.T.S.



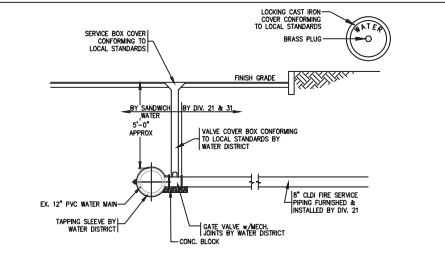
7 DOWNSPOUT CONNECTION AT GRADE DETAIL  
N.T.S.  
NOTE:  
REFER TO DRAIN PIPE TRENCH SECTION DETAIL FOR PIPE BEDDING REQUIREMENTS.



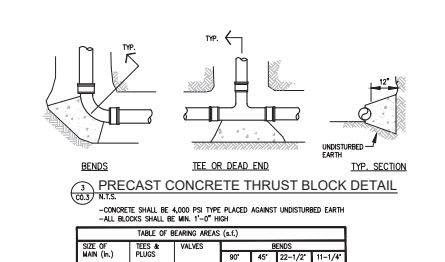
6 GROUND CLEANOUT DETAIL  
N.T.S.



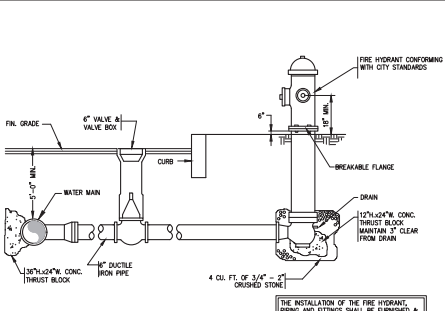
1 TYP. TRENCH SECTION FOR WATER  
N.T.S.



2 WATER SERVICE TAPPING SCHEMATIC DETAIL  
N.T.S.  
NOTE:  
THE FIRE PROTECTION CONTRACTOR SHALL FURNISH AND INSTALL ALL TAPPING SERVICES. GATE VALVES, ROAD BOXES, PIPING AND THRUST BLOCKS REQUIRED TO COMPLETE THE WORK UNDER SECTION 250000. THE SITE CONTRACTOR SHALL FURNISH ALL LABOR, EQUIPMENT AND EARTH MATERIALS TO EXCAVATE, BED AND BACKFILL THE WORK OF DIV. 21 UNDER SECTION 310000.



5 PRECAST CONCRETE THRUST BLOCK DETAIL  
N.T.S.  
NOTE:  
CONCRETE SHALL BE 4000 PSI TYPE PLACED AGAINST UNDISTURBED EARTH - ALL BLOCKS SHALL BE MIN. 1'-0\"/>



4 FIRE HYDRANT DETAIL  
N.T.S.  
NOTE:  
THE INSTALLATION OF THE FIRE HYDRANT, PIPING AND FITTINGS SHALL BE FURNISHED & INSTALLED BY DIV. 21. EXCAVATION, BEDDING AND DRAINAGE SYSTEM SHALL BE FURNISHED & INSTALLED BY DIV. 31.

NOTE:  
1. ALL MATERIALS WILL CONFORM TO NEWTON WATER & SEWER DEPARTMENT SPECIFICATIONS AND INSTALLATION PROCEDURES SHALL CONFORM TO APPLICABLE CODES AND POLICES.  
2. ALL PIPE SHALL BE MINIMUM DEPTH OF 3 FEET FROM THE TOP OF PIPE TO FINISH GRADE.  
3. REFER TO DETAIL 1/C0.3 FOR TRENCH DETAIL.  
4. REFER TO DETAIL 1/C0.3 FOR CONCRETE THRUST BLOCK DETAIL.  
5. AFTER INSTALLATION, TESTING & BACKFILLING OF TRENCH, FINISH GRADE SHALL BE RESTORED TO ORIGINAL GRADE. FINISH GRADE SHALL BE VERIFIED BY MEASUREMENT MANUFACTURED BY SUELLER, 11MM, ROADWAY, OR APPROVED EQUAL.  
6. CONNECTION TO THE EXISTING WATER MAIN SHALL BE ACHIEVED WITH COUPLINGS MANUFACTURED BY WEAVER, 11MM, ROADWAY, OR APPROVED EQUAL.  
7. CONTRACTOR SHALL COORDINATE THE SHADOWN OF THE EXISTING WATER MAIN WITH THE NEWTON WATER & SEWER DEPARTMENT AND THE OWNER.

NOTE:  
THE FIRE PROTECTION CONTRACTOR SHALL FURNISH AND INSTALL ALL TAPPING SERVICES. GATE VALVES, ROAD BOXES, PIPING AND THRUST BLOCKS REQUIRED TO COMPLETE THE WORK UNDER SECTION 250000. THE SITE CONTRACTOR SHALL FURNISH ALL LABOR, EQUIPMENT AND EARTH MATERIALS TO EXCAVATE, BED AND BACKFILL THE WORK OF DIV. 21 UNDER SECTION 310000.

NOTE:  
CONCRETE SHALL BE 4000 PSI TYPE PLACED AGAINST UNDISTURBED EARTH - ALL BLOCKS SHALL BE MIN. 1'-0\"/>

NOTE:  
THE INSTALLATION OF THE FIRE HYDRANT, PIPING AND FITTINGS SHALL BE FURNISHED & INSTALLED BY DIV. 21. EXCAVATION, BEDDING AND DRAINAGE SYSTEM SHALL BE FURNISHED & INSTALLED BY DIV. 31.







