

PROPOSED ADDITION

SEPTEMBER 8, 2021

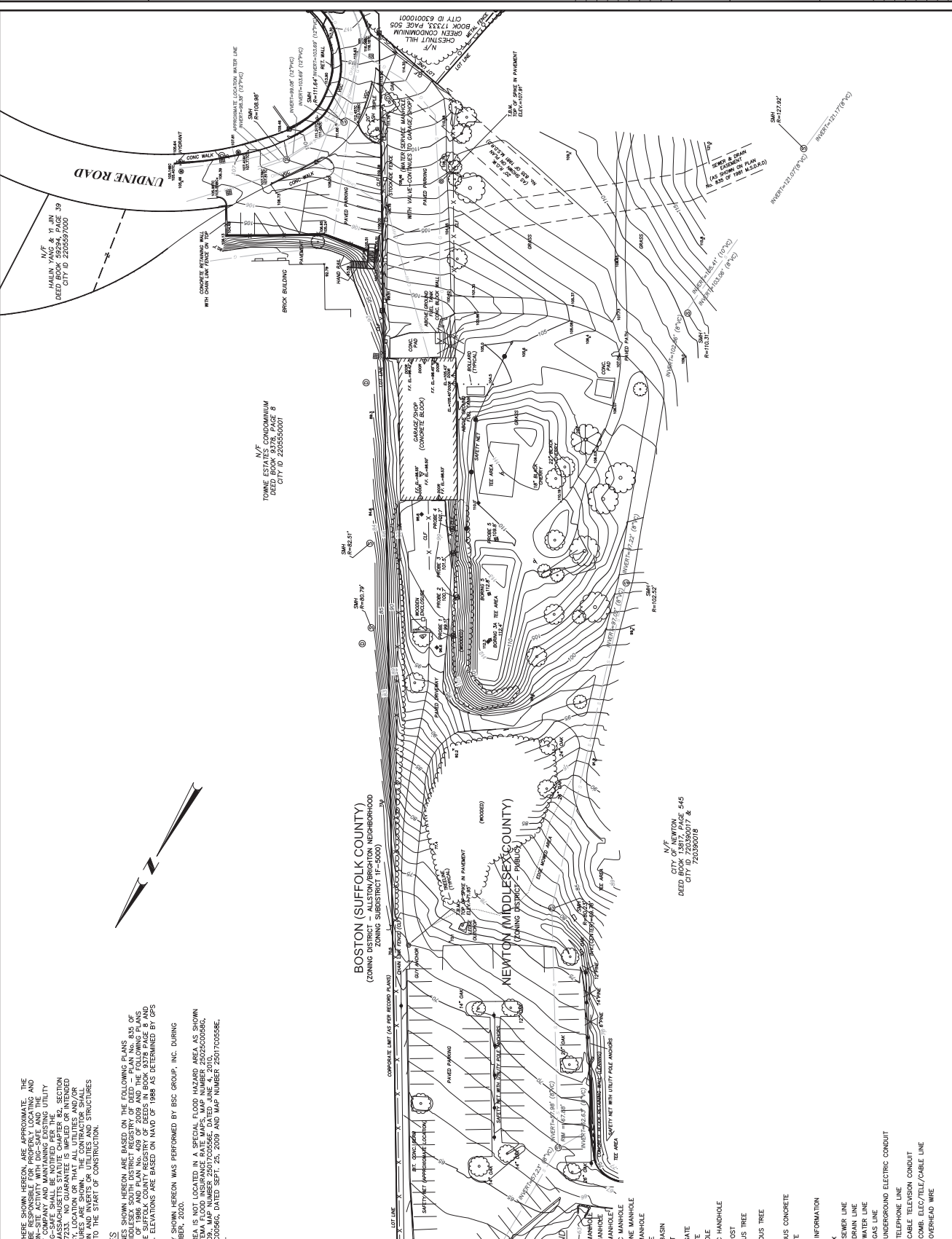


UTILITY NOTES

1. THE PROPERTY LINES SHOWN HEREON ARE BASED ON THE FOLLOWING PLANS RECORDED AT THE MIDDLESEX SOUTH DISTRICT REGISTRY OF DEEDS: PLAN No. 832 OF DEED BOOK 9376, PAGE 8 (N/E CONDOMINIUM DEED BOOK 9376, PAGE 8 AND AS RECORDED AT THE SUFFOLK COUNTY REGISTRY OF DEEDS IN BOOK 9378 PAGE 8 AND BOOK 9379 PAGE 8. ELEVATIONS ARE BASED ON MVD OF 1988 AS DETERMINED BY GPS SURVEYING.
2. THE FIELD SURVEY (S/M) HEREON WAS PERFORMED BY BSG GROUP, INC. DURING AUGUST AND SEPTEMBER, 2020.
3. THE SURVEYED AREA IS NOT LOCATED IN A SPECIAL FLOOD HAZARD AREA AS SHOWN ON THE FOLLOWING FEMA FLOOD INSURANCE RATE MAPS: MAP NUMBER 25020C00585, DATED SEPTEMBER 2019; MAP NUMBER 25020C00586, DATED SEPTEMBER 2019; MAP NUMBER 25020C00587, DATED SEPTEMBER 2019; MAP NUMBER 25020C00588, DATED SEPTEMBER 2019; MAP NUMBER 25020C00589, DATED SEPTEMBER 2019; MAP NUMBER 25020C00590, DATED SEPTEMBER 2019; MAP NUMBER 25020C00591, DATED SEPTEMBER 2019; MAP NUMBER 25020C00592, DATED SEPTEMBER 2019; MAP NUMBER 25020C00593, DATED SEPTEMBER 2019; MAP NUMBER 25020C00594, DATED SEPTEMBER 2019; MAP NUMBER 25020C00595, DATED SEPTEMBER 2019; MAP NUMBER 25020C00596, DATED SEPTEMBER 2019; MAP NUMBER 25020C00597, DATED SEPTEMBER 2019; MAP NUMBER 25020C00598, DATED SEPTEMBER 2019; MAP NUMBER 25020C00599, DATED SEPTEMBER 2019; MAP NUMBER 25020C00600, DATED SEPTEMBER 2019.

UTILITY NOTICE

WHERE SHOWN HEREON, ARE APPROXIMATE. THE CONTRACTOR SHALL BE RESPONSIBLE FOR PROPERLY LOCATING AND COORDINATING ANY ON-SITE ACTIVITY WITH DIG-SAFE AND THE UTILITY SYSTEM SERVICE. DIG-SAFE SHALL BE NOTIFIED PER THE UTILITY SYSTEM SERVICE. THE CONTRACTOR SHALL BE RESPONSIBLE FOR OBTAINING ALL NECESSARY MASSACHUSETTS PERMITS AND INSURANCE COVERAGE PRIOR TO THE START OF CONSTRUCTION. THE CONTRACTOR SHALL BE RESPONSIBLE FOR OBTAINING ALL NECESSARY PERMITS AND INSURANCE COVERAGE PRIOR TO THE START OF CONSTRUCTION. THE CONTRACTOR SHALL BE RESPONSIBLE FOR OBTAINING ALL NECESSARY PERMITS AND INSURANCE COVERAGE PRIOR TO THE START OF CONSTRUCTION.



EXISTING
CONDITIONS
PLAN

212 KENRICK STREET
IN
NEWTON
MASSACHUSETTS
(MIDDLESEX COUNTY)

SEPTEMBER 7, 2020

NO.	DATE	DESC.
1.	9/15	BORING ELEVATION
2.	12/22/20	BORING ELEVATION

PREPARED FOR:
RAYMOND DESIGN ASSOCIATES, INC.

BSC GROUP
803 Summer Street
Boston, Massachusetts
02127
© 2020 BSC Group, Inc.
617.856.4300

SCALE: 1" = 30'
0 15 30

PROJ. MOR: CWM
FIELD: JF, BS, PM
CALC./DESIGN: CWM
DRAWN: SC
CHECK: CWM

FILE: 864120X01.DWG
SHEET
1 OF 1

139-22



North Approach from Newton



North approach from Newton



East Elevation alongside apartments



South Approach from Boston



Parking to the South, off of Undine Road

Raymond Design
Associates, Inc
Architects & Planners
60 Ledgewood Place
Rockland, MA 02370

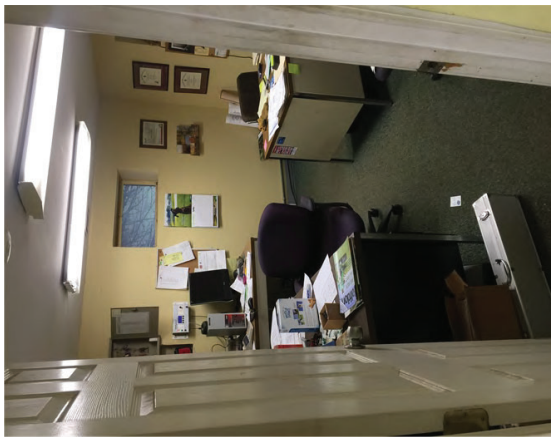


NEWTON COMMONWEALTH GOLF COURSE
PROPOSED ADDITION

SEPTEMBER 8, 2021



Existing Staff Room



Facilities Director Office



Storage Bay



Maintenance Bay



Storage Bay



FOR SITE PLAN APPROVAL
REVISIONS 301

NEWTON COMMONWEALTH GOLF COURSE
Maintenance Facilities Improvements & Renovations
212 Kentick Street, Newton, MA 02458

SITE UTILITY PLAN

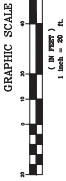
No.	Date	Description

Drawn By: NCK
Checked By: CAG
Approved By: [Signature]
Drawing Scale: 1" = 20'

22-139-62

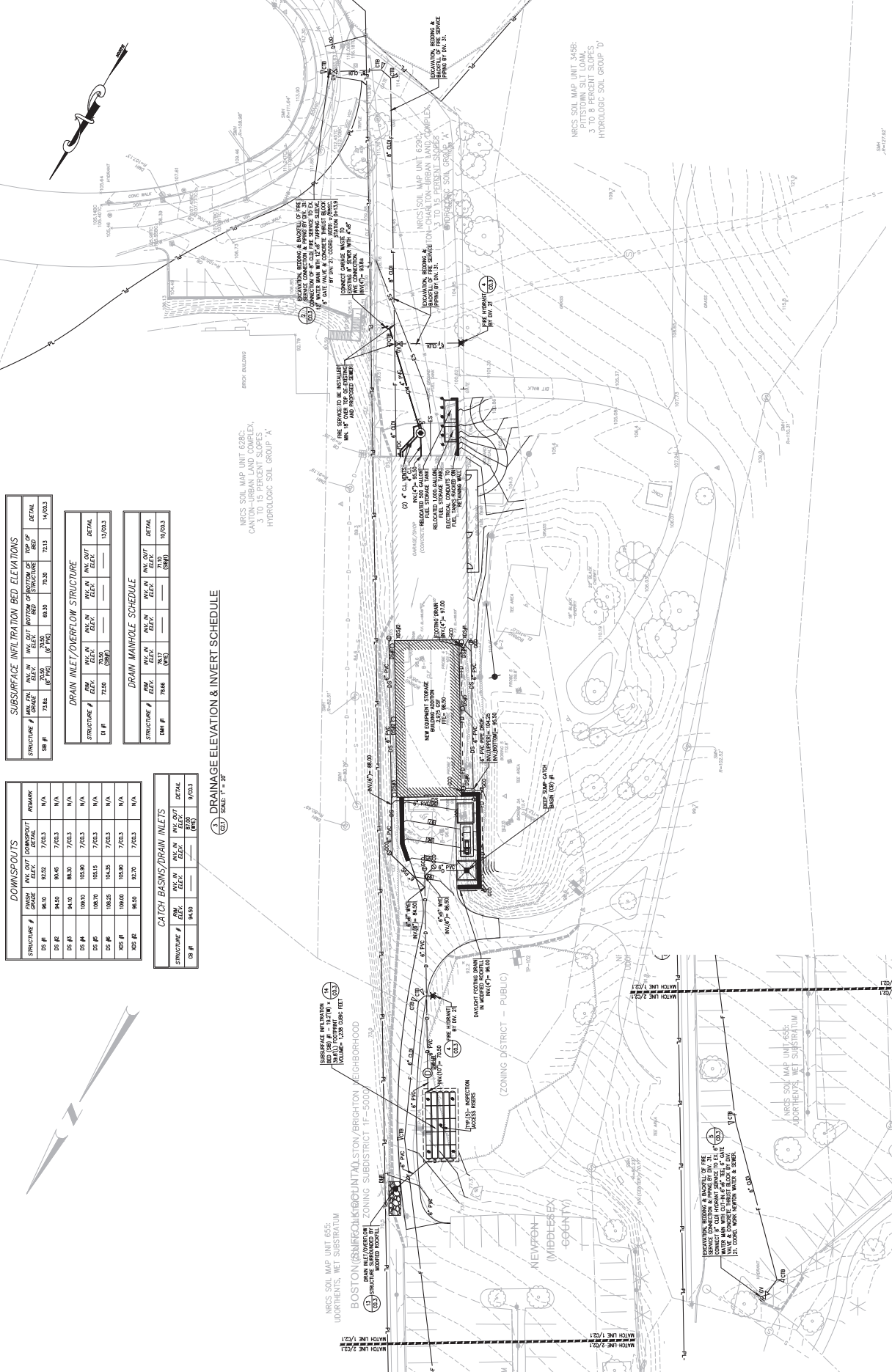
Date: 08/14/2021

C2.1



(C2) SITE UTILITY PLAN
SCALE: 1" = 20'

(C2) PARTIAL SITE UTILITY PLAN
SCALE: 1" = 20'



SUBSURFACE INFILTRATION BED ELEVATIONS

STRUCTURE #	DATE	INLET ELEV. (AS BUILT)	INLET ELEV. (AS DESIGNED)	TOP OF STRUCTURE BED	TOP OF DETAIL	DETAIL
SB #1	7/28/21	72.88	72.88	70.30	72.13	11/20/23

DRAIN INLET/OVERFLOW STRUCTURE

STRUCTURE #	DATE	INLET ELEV. (AS BUILT)	INLET ELEV. (AS DESIGNED)	INLET ELEV. (AS DESIGNED)	INLET ELEV. (AS DESIGNED)	DETAIL
DI #1	7/28/21	72.88	72.88	70.30	72.13	11/20/23

DRAIN MANHOLE SCHEDULE

STRUCTURE #	DATE	INLET ELEV. (AS BUILT)	INLET ELEV. (AS DESIGNED)	INLET ELEV. (AS DESIGNED)	INLET ELEV. (AS DESIGNED)	DETAIL
DM #1	7/28/21	72.88	72.88	70.30	72.13	11/20/23

DOWNSPOUTS

STRUCTURE #	DATE	INLET ELEV. (AS BUILT)	INLET ELEV. (AS DESIGNED)	REMARK
DS #1	9/8/20	82.52	77.02/3	N/A
DS #2	9/8/20	80.45	77.02/3	N/A
DS #3	9/8/20	88.30	77.02/3	N/A
DS #4	10/8/20	105.90	77.02/3	N/A
DS #5	10/8/20	105.15	77.02/3	N/A
DS #6	10/8/20	104.35	77.02/3	N/A
DS #7	10/8/20	105.90	77.02/3	N/A
DS #8	10/8/20	82.30	77.02/3	N/A

CATCH BASINS/DRAIN INLETS

STRUCTURE #	DATE	INLET ELEV. (AS BUILT)	INLET ELEV. (AS DESIGNED)	REMARK
CB #1	9/8/20	82.52	81.00	7/20/23

(C2) DRAINAGE ELEVATION & INVERT SCHEDULE
SCALE: 1" = 20'



Revisions:

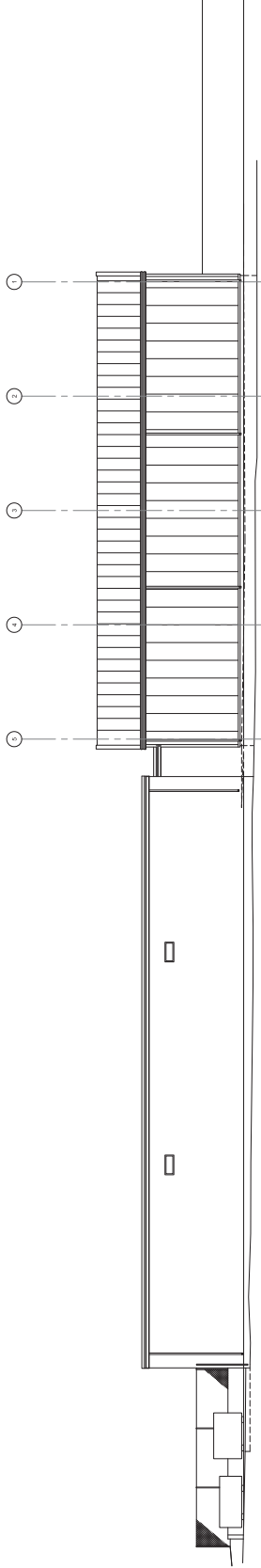
No.	Date	Description

Drawn By: MHW
Checked By: MHW
Approved By: DPB

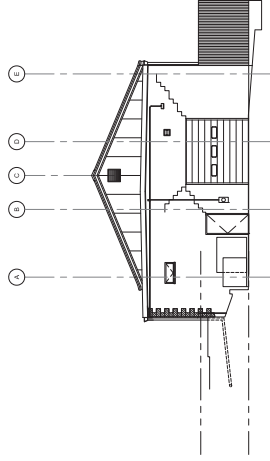
Drawing Scale: As Shown

Project Number: 139-22

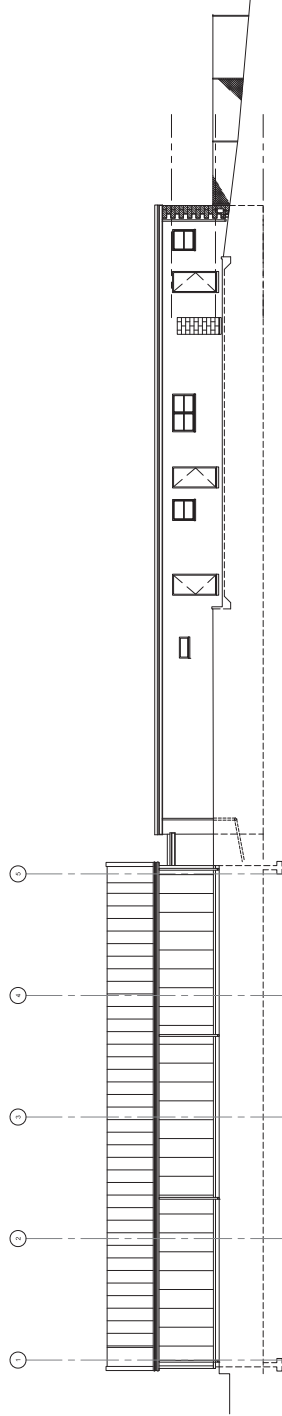
Date: SEPTEMBER, 2021



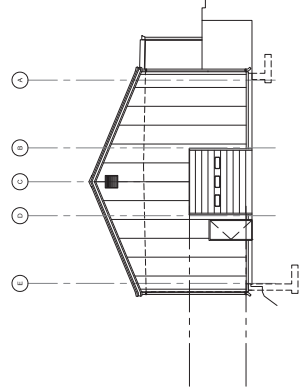
(A) EAST ELEVATION
1/8" = 1'-0"



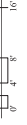
(B) SOUTH ELEVATION
1/8" = 1'-0"

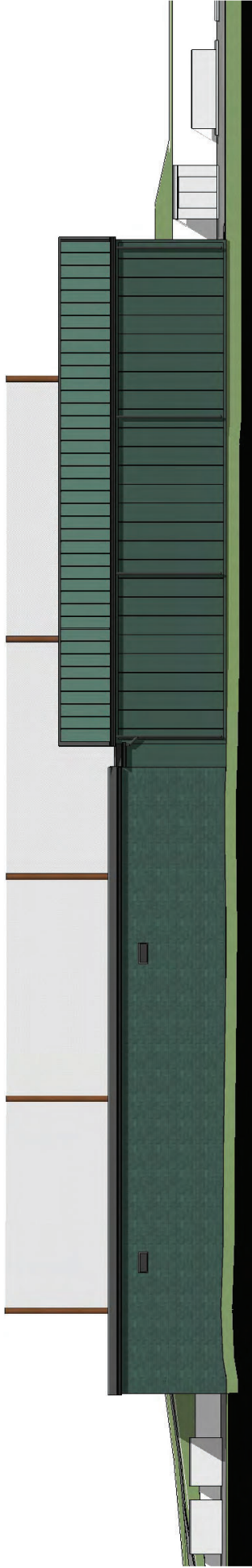


(C) WEST ELEVATION
1/8" = 1'-0"



(D) NORTH ELEVATION
1/8" = 1'-0"





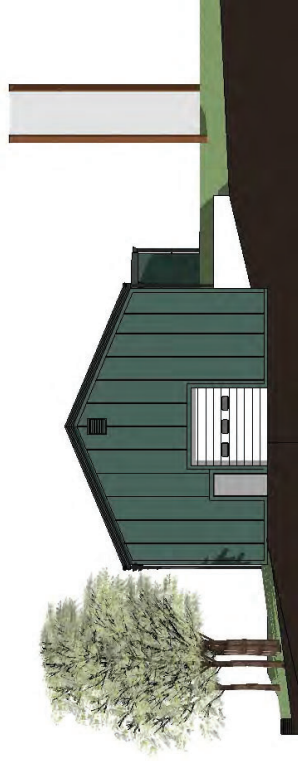
EAST ELEVATION



WEST ELEVATION



SOUTH ELEVATION



NORTH ELEVATION

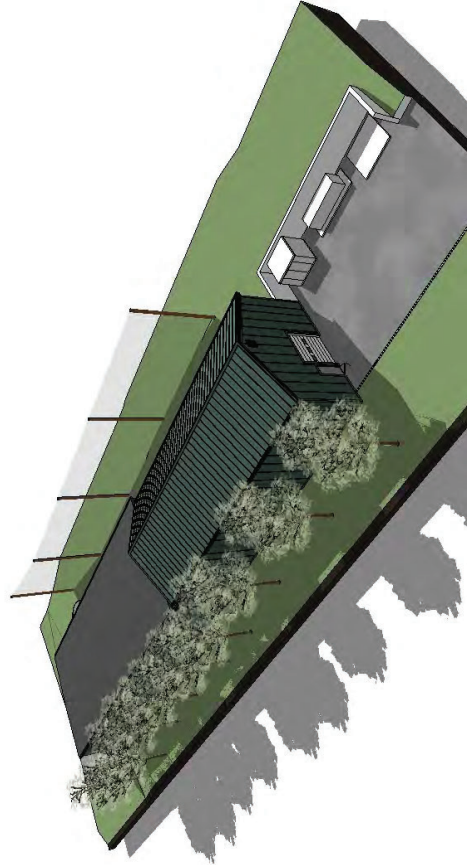
PERSPECTIVE VIEWS



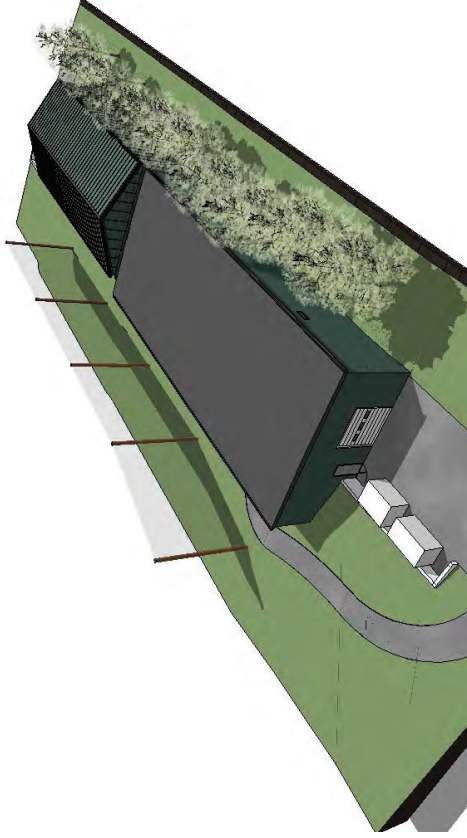
VIEW LOOKING SOUTH



VIEW LOOKING NORTH



AERIAL VIEW LOOKING SOUTHEAST



AERIAL VIEW LOOKING NORTHEAST