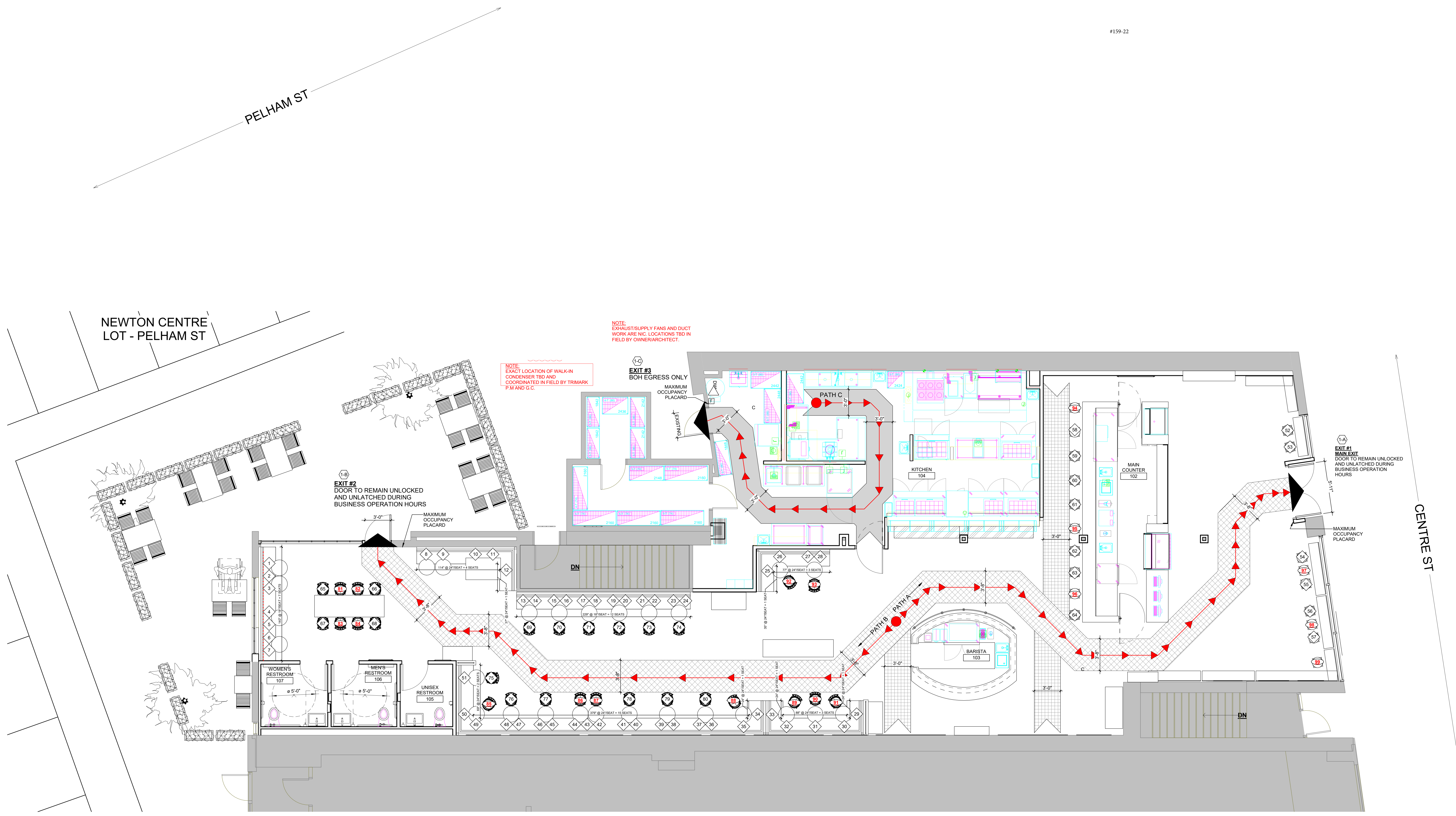


#159-22



NOTE: EXHAUST/SUPPLY FANS AND DUCT WORK ARE NIC LOCATIONS TBD IN FIELD BY OWNER/ARCHITECT.

NOTE: EXACT LOCATION OF WALK-IN CONDENSER TRIO AND COORDINATED IN FIELD BY TRIMARK T.M AND G.C.

EXIT #3 BOH EGRESS ONLY
MAXIMUM OCCUPANCY PLACARD

EXIT #2 DOOR TO REMAIN UNLOCKED AND UNLATCHED DURING BUSINESS OPERATION HOURS
MAXIMUM OCCUPANCY PLACARD

EXIT #1 MAIN EXIT DOOR TO REMAIN UNLOCKED AND UNLATCHED DURING BUSINESS OPERATION HOURS
MAXIMUM OCCUPANCY PLACARD

GENERAL NOTE

IN THE EVENT OF AN EMERGENCY, ALL OCCUPANTS ARE TO EVACUATE THE PREMISES AND MEET ON THE CORNER OF CENTRE AND PELHAM STREETS.

LEGEND

- PATH OF EGRESS
- (1-A) MAIN EGRESS ONTO CENTRE STREET
- (1-B) SECONDARY EGRESS ONTO NEWTON CENTRE PARKING LOT - PELHAM STREET
- (1-C) BOH EGRESS ONTO NEWTON CENTRE PARKING LOT - PELHAM STREET

TOTAL EGRESS PATH LENGTHS

PATH	LENGTH OF TRAVEL
PATH A	697'-10"
PATH B	771'-2"
PATH C - BOH	450'-0"

EXISTING OCCUPANCY CHART

AREA	QUANTITY
MAXIMUM INTERIOR OCCUPANCY (INCLUDES: MAXIMUM 9 EMPLOYEES ON LARGEST SHEET)	89
MAXIMUM OUTDOOR PATIO OCCUPANCY	25

SPECIAL PERMIT:
EXISTING BOARD ORDER FROM THE CITY OF NEWTON: #242-02 PAGE 3
2- THE PETITIONER MAY OPERATE A BAKERY/CAFE RESTAURANT WITH A **MAXIMUM OF 89 SEATS** AND 9 EMPLOYEES ON THE LARGEST SHEET, WITH A PARKING WAIVER OF 14 PARKING STALLS. THE PETITIONER MAY LOCATE AN ADDITIONAL 25 SEATS ON AN OUTDOOR PATIO DURING A SIX-MONTH PERIOD FROM MAY THROUGH OCTOBER, WITH AN ADDITIONAL PARKING WAIVER OF 9 PARKING STALLS FOR SUCH USE, PROVIDED HOWEVER, THAT THE TOTAL NUMBER OF SEATS SHALL NOT EXCEED 109 AND THE TOTAL NUMBER OF OUTDOOR PATIO SEATS SHALL NOT EXCEED 25.

DOCUMENT NUMBER: 7739 RECORDED DATE: JANUARY 14, 2010
DOCUMENT TYPE: DECIS

STANDING ROOM - PATRONS TO ORDER AND LEAVE PREMISES ON PATRONS SIT AT ALLOWED SEATING

SEAT CALCULATION LEGEND

SEATING TYPE	CALCULATION
FIXED STRAIGHT SEATING	18" SEAT
FIXED BOOTH SEATING	24" SEAT
EXISTING SEAT NUMBER DESIGNATED BY:	◆
PROPOSED SEAT NUMBER DESIGNATED BY:	●

REFERENCE FIXED SEATING DIMENSIONS AND DESIGNATIONS ON PLAN ABOVE

ISSUE	DESCRIPTION	DATE

M
McMahon
architects

535 ALBANY STREET
BOSTON, MA 02118
T 617.482.5353
www.mcmahonarchitects.com

JOB TITLE & ADDRESS:
TATTE BAKERY
1241 CENTRE ST | NEWTON,
MA 02459

PROJECT INFORMATION:
SCALE: As indicated
DRAWN BY: AN
CHECKED BY: AN
JOB NO: 2020-3903

SHEET TITLE:
FIRST FLOOR PLAN

STAMP:

A100