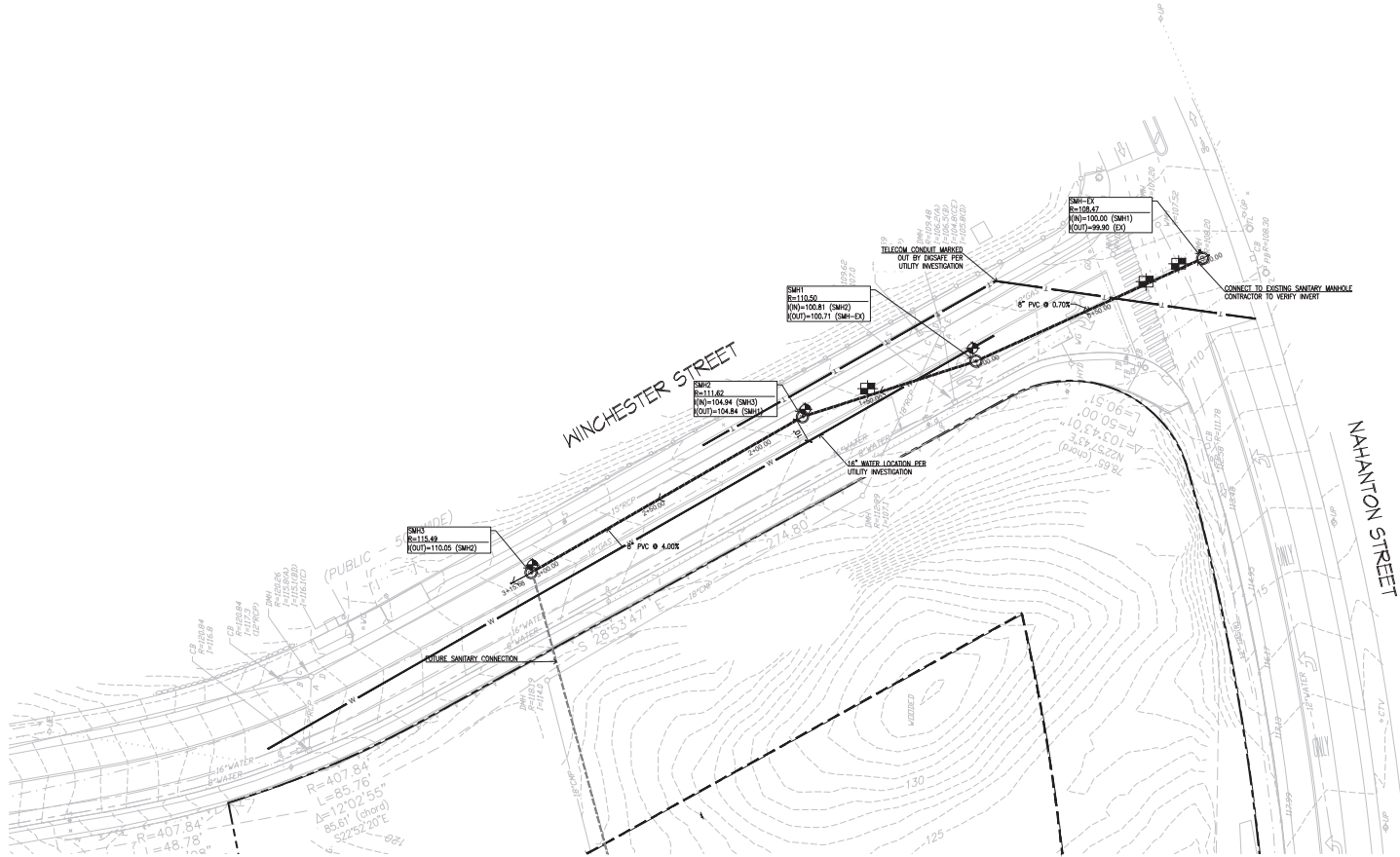


NOTES
1. WINCHESTER STREET MUST BE REPAVED CURB LINE TO CURB LINE FOR EXTENTS OF UTILITY WORK.

UTILITY LEGEND

- SANITARY SEWER LINE
- ⊙ SANITARY SEWER MANHOLE
- ⊕ BORING LOCATIO
- ⊕ TEST PIT LOCATION



- Owner:
2 LIFE COMMUNITIES
30 Wallingford Road
Brighton, MA 02135
- Construction Manager:
DELL BROOK
One Ashley Place 859 Willard St
Quincy, MA 02169
- Civil / Site / Landscape:
STANTEC
141 Portland St.
Boston, MA 02114
- Structural:
VEITAS & VEITAS ENGINEERS, INC
635 Granite Street
Braintree, MA 02184
- MFP Consultant:
PETERSEN ENGINEERING, INC.
127 Patriot Ave.
Portsmouth, NH 03801
- Lighting Consultant:
HILBISH MCGEE LIGHTING DESIGN
405 Franklin Street
Sewickley, PA 15143
- Food Service:
FOOD FACILITIES CONCEPTS, INC.
1100 Washington Ave., Suite 302
Carnegie, PA 15106
- Accountal Consultant:
CAVANAUGH TOCCI
327F Boston Post Road
Sabbury, MA 01776

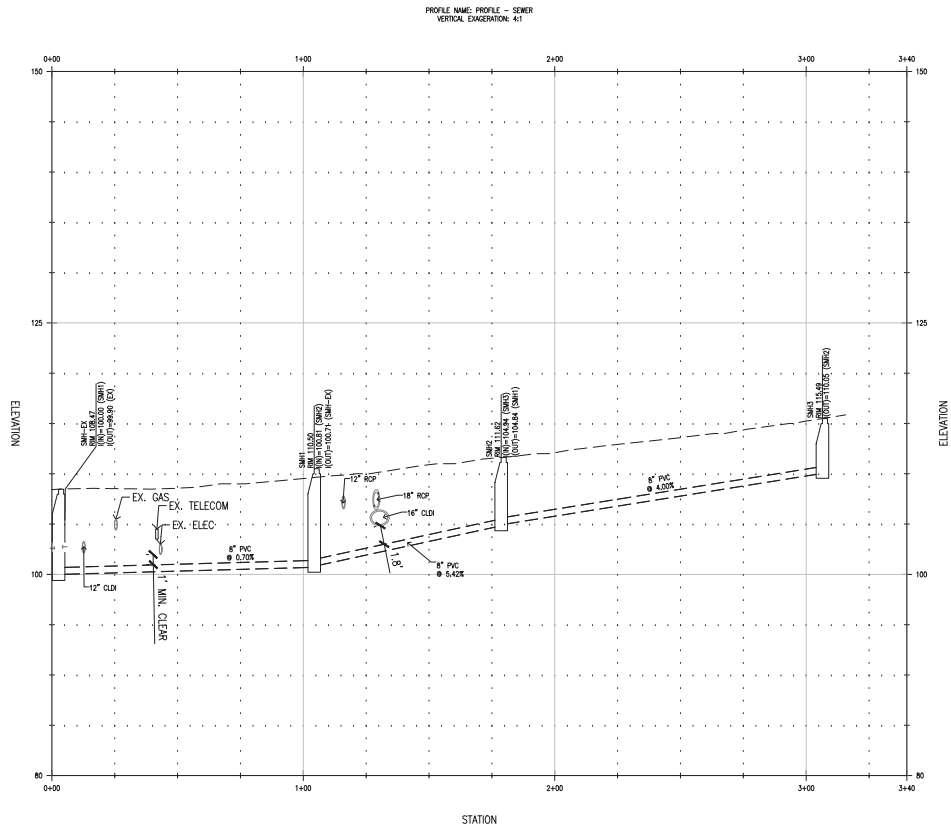
PROJECT TITLE:
2LIFE - OPUS

667 WINCHESTER STREET
NEWTON, MA 02459

PROJECT No: 66571
DRAWING TITLE:
**SANITARY
MAIN PLAN**

SCALE: 1" = 20'
C-102
PUBLIC FACILITIES COMMITTEE

NO.	DATE	ISSUE
01	03/02/2022	PUBLIC FACILITIES COMMITTEE



C:\BENTLEY\LOCAL\PROJECTS\21\life-newton_R110\jramos\dwg\02\03\2022\2022-22.dwg



- Owner: **2 LIFE COMMUNITIES**
30 Wallingford Road
Brighton, MA 02135
- Construction Manager: **DELBROOK**
One Adams Plaza 859 Willard St
Quincy, MA 02269
- Civil / Site / Landscape: **STANTEC**
141 Portland St.
Boston, MA 02114
- Structural: **VEITAS & VEITAS ENGINEERS, INC.**
635 Granite Street
Braintree, MA 02184
- MEP consultant: **PETERSEN ENGINEERING, INC.**
127 Patriot Ave.
Portsmouth, NH 03801
- Lighting Consultant: **HILBISH MCGEE LIGHTING DESIGN**
405 Franklin Street
Sewickley, PA 15143
- Food Service: **FOOD FACILITIES CONCEPTS, INC.**
1100 Washington Ave, Suite 302
Carnegie, PA 15106
- Acoustical Consultant: **CAVANAUGH TOCCI**
327F Boston Post Road
Sudbury, MA 01776

PROJECT TITLE:
2LIFE - OPUS

667 WINCHESTER STREET
NEWTON, MA 02459

PROJECT No: 66571

DRAWING TITLE:
**SANITARY
MAIN
PROFILE**

SCALE: 1" = 20'

C-103
PUBLIC FACILITIES COMMITTEE

03/01/2022