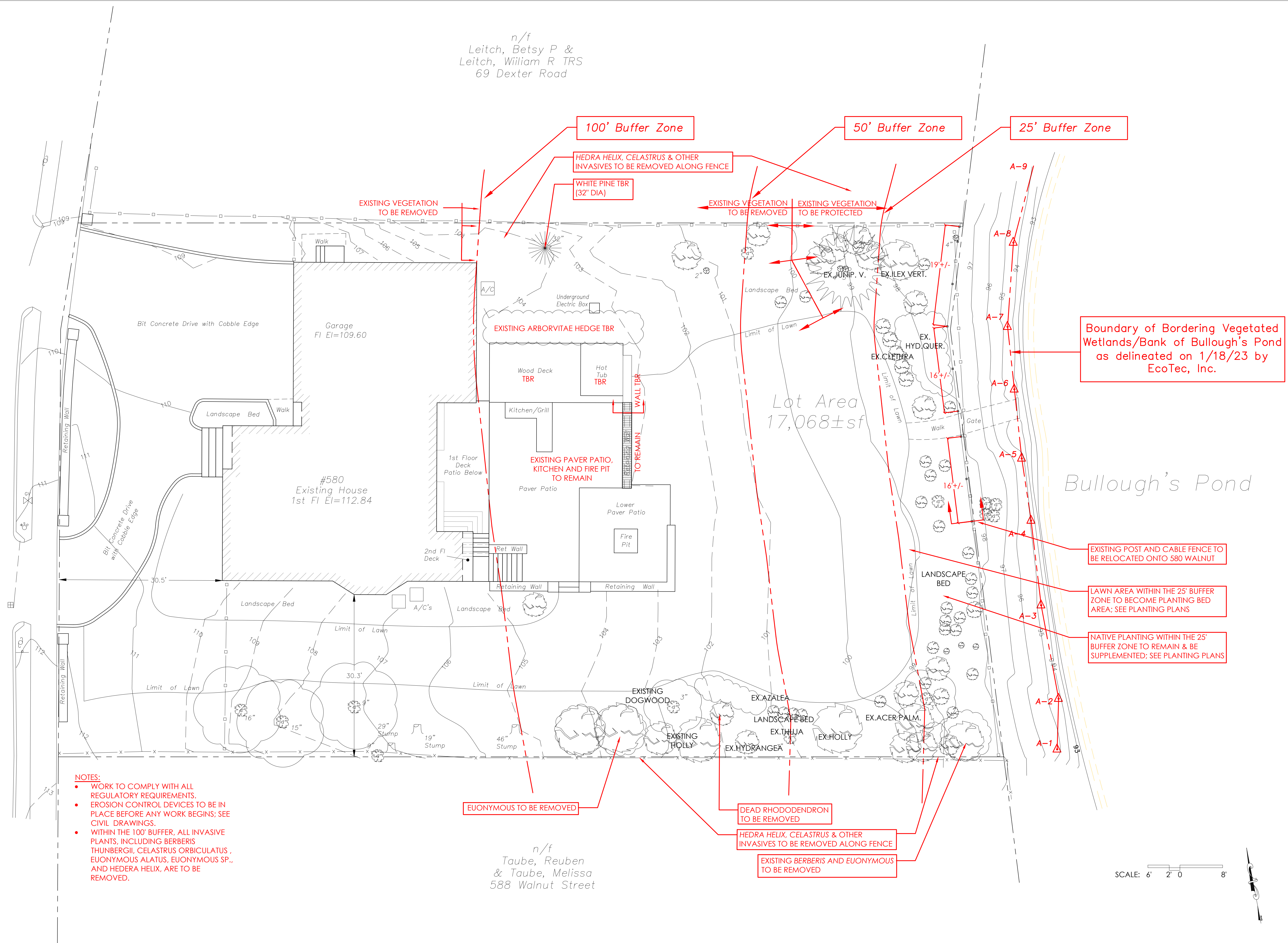


n/f
Leitch, Betsy P &
Leitch, William R TRS
69 Dexter Road

Street

Walnut



- NOTES:**
- WORK TO COMPLY WITH ALL REGULATORY REQUIREMENTS.
 - EROSION CONTROL DEVICES TO BE IN PLACE BEFORE ANY WORK BEGINS; SEE CIVIL DRAWINGS.
 - WITHIN THE 100' BUFFER, ALL INVASIVE PLANTS, INCLUDING BERBERIS THUNBERGII, CELASTRUS ORBICULATUS, EUONYMUS ALATUS, EUONYMUS SP., AND HEDERA HELIX, ARE TO BE REMOVED.

n/f
Taube, Reuben
& Taube, Melissa
588 Walnut Street

SCALE: 6' 2' 0 8'



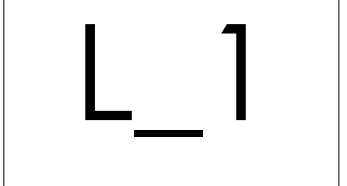
RYAN ASSOCIATES
LANDSCAPE ARCHITECTURE AND PLANNING
144 Moody Street, Building 4
Waltham, MA 02453-5332
PH: 781-314-0401
WWW.RYAN-ASSOC.COM

RYAN

SINGAL RESIDENCE
580 WALNUT STREET
NEWTON, MA

LANDSCAPE SITE NOTES AND PREPARATION PLAN
JUNE 26, 2023

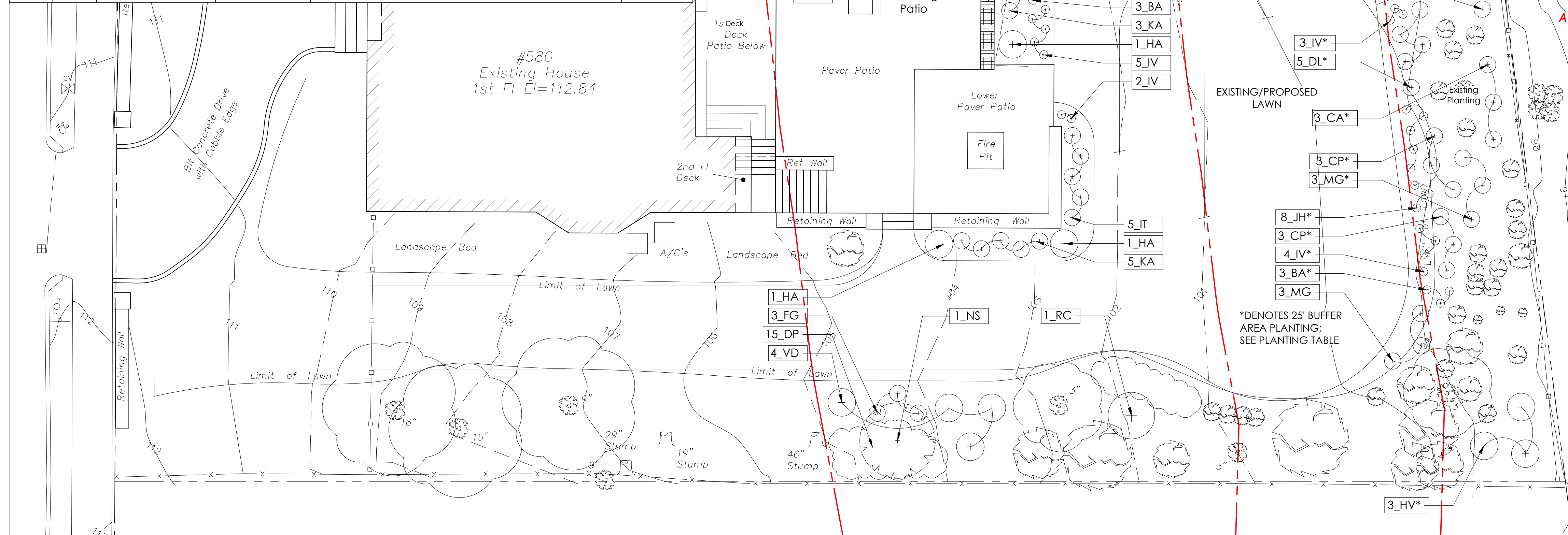
ISSUED	1	2	3	4	5	6



eed, current
pre 1953

* 580 WALNUT - PLANT LIST					
- 25' BUFFER ZONE AREA -					
ABBR.	BOTANICAL NAME	COMMON NAME	ATTRIBUTES	SIZE - TYP	
Shrubs					
6	CP	<i>Comptonia peregrina</i>	Sweet Fern	fern-like, leaves give off a pleasant fragrance when crushed	#3
3	CA	<i>Cornus alba</i>	Red-Twig Dogwood	flowers late spring/early summer, followed by fruit white to blue, red stems	3' ht
5	DL	<i>Diervilla lonicera</i>	Diervilla	yellow flowers, leaves shift from green to red mid-season	18" ht
4	FG	<i>Fothergilla gardenii</i>	Fothergilla	white bottle-brush-like flowers, yellow fall color	18" ht.
3	HV	<i>Hamamelis virginiana</i>	Witch Hazel	late-fall blooming, yellow flowers, good mixed-border shrub	3-4' ht.
1	IG	<i>Ilex glabra</i>	Inkberry	evergreen foliage, good bird cover	24" ht
17	JH	<i>Juniperus h. 'Bar Harbor'</i>	Bar Harbor Juniper	low growing, groundcover form, attractive silver foliage	#3
3	MG	<i>Myrica gale</i>	Sweetgale	leaves give off a pleasant fragrance when crushed, blends well in native border	18" ht.
Perennials					
3	BA	<i>Baptisia australis</i>	False Indigo	upright, shrub-like form, attractive blue flowers and seed structure	#2
4	IV	<i>Iris versicolor</i>	Blue Flag	summer blooming, grass-like foliage, elaborate flower structure	#2

580 WALNUT - PLANT LIST					
- 25'-100' BUFFER ZONE AREA -					
ABBR.	BOTANICAL NAME	COMMON NAME	ATTRIBUTES	SIZE - TYP	
Trees					
8	JV	<i>Juniperus virginiana</i>	Eastern Red Cedar	sub-canopy species, spring flowers, graceful, open branching form	8-10' ht
1	NS	<i>Nyssa sylvatica</i>	Black Gum	horizontal branching, great red fall color, bird habitat	2.5' cal
Shrubs					
4	AA	<i>Azalea calendulaceum</i>	Flame Azalea	Summer bloomer, yellow flowers, good fall color	3-4' ht
4	CF	<i>Calycanthus floridus</i>	All Spice	fragrant, dark red flowers	3' ht
3	FG	<i>Fothergilla gardenii</i>	Fothergilla	white bottle-brush-like flowers, yellow fall color	18" ht.
3	HA	<i>Hydrangea arborescens</i>	Smooth Hydrangea	adaptable native hydrangea, summer blooming, white	24" ht.
5	IT	<i>Itea virginica</i>	Sweetspire	cascading flowers in early summer, naturalizes well	18" ht.
4	JH	<i>Juniperus h. 'Bar Harbor'</i>	Bar Harbor Juniper	low growing, groundcover form, attractive silver foliage	#3
12	KA	<i>Kalmia latifolia</i>	Laurel	shade tolerant, evergreen, pink-white flowers	24" ht.
3	MG	<i>Myrica gale</i>	Sweetgale	leaves give off a pleasant fragrance when crushed, blends well in native border	18" ht.
1	RC	<i>Rhododendron cat. 'Album'</i>	White Catawba Rhod.	hardy white rhododendron	3-4' ht
Perennials					
5	AD	<i>Aruncus dioicus</i>	Goatsbeard	fern-like foliage, striking plume-form flowers, shade tolerant	#2
15	DP	<i>Dennstaedtia punctilobula</i>	Hayscented Fern	adaptable, naturalizing fern, with fine leafed fronds	#1
3	BA	<i>Baptisia australis</i>	False Indigo	upright, shrub-like form, attractive blue flowers and seed structure	#2
17	IV	<i>Iris versicolor</i>	Blue Flag	summer blooming, grass-like foliage, elaborate flower structure	#2
5	MB	<i>Monarda didyma</i>	Bee Balm	upright, shrub-like form, attractive red flowers	#2
5	PS	<i>Polygonum biflorum</i>	Solomon's Seal	spring blooming, pear-like flowers, arching stems	#2



Boundary of Bordering Vegetated Wetlands/Bank of Bullough's Pond as delineated on 1/18/23 by EcoTec, Inc.

PERENNIALS

Aruncus dioicus Goatsbeard Baptisia australis False Indigo

Dennstaedtia punctilobula Hayscented Fern Iris versicolor Blue Flag Iris

Monarda didyma Bee Balm

Polygonum biflorum Solomon's Seal

TREES

Chamaecyparis thyoides White Cedar

Nyssa sylvatica Black Gum

SHRUBS

Azalea calendulaceum Flame Azalea

Comptonia peregrina Sweetfern

Diervilla lonicera Diervilla

Hamamelis virginiana Witch Hazel

Ilex glabra Inkberry

Juniperus h. 'Bar Harbor' Bar Harbor Juniper

Myrica gale Sweet Gale

Cornus alba Red-Twig Dogwood

Fothergilla gardenii Dwarf Fothergilla

Hydrangea arborescens Smooth Hydrangea

Itea virginica Sweetspire

Kalmia angustifolia Laurel

Rhodo. c. 'Album' White Catawba Rhodo.

ISSUES

1
2
3
4
5
6

L2

RYAN ASSOCIATES
LANDSCAPE ARCHITECTURE AND PLANNING
144 Moody Street, Building 4
Waltham, MA 02453-5332
PH: 781-314-0401
www.ryan-assoc.com

SINGAL RESIDENCE
580 WALNUT STREET
NEWTON, MA

PLANTING PLAN
JUNE 26, 2023