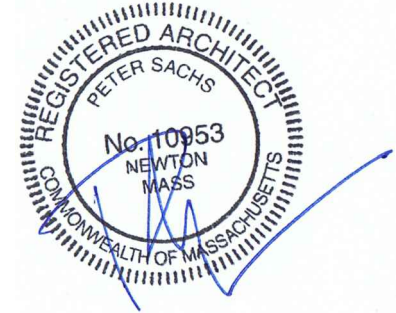
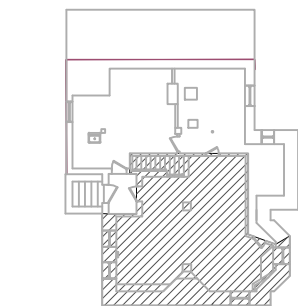


# HABITABLE SPACE CALCULATION

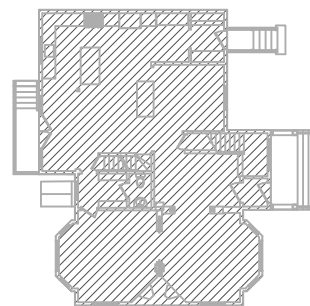


HABITABLE SPACE PER FLOOR	
BASEMENT	201 S.F.
FIRST FLOOR	1,615 S.F.
SECOND FLOOR	1,207 S.F.
ATTIC FLOOR	559 S.F.
ACCESSORY APARTMENT	466 S.F.
<b>HABITABLE TOTAL</b>	<b>4048 S.F.</b>

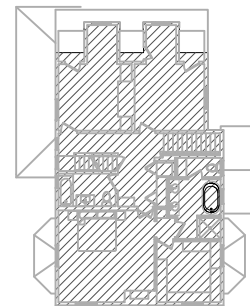
## HOUSE HABITABLE



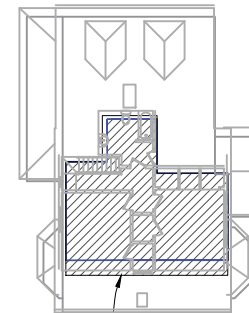
HABITABLE  
BASEMENT FLR  
627 SQ. FT.



HABITABLE  
FIRST FLR  
1615 SQ. FT.



HABITABLE  
SECOND FLR  
1207 SQ. FT.



HABITABLE ATTIC  
@ <5'-0"  
559 SQ. FT.

MASS BELOW FIRST FLOOR  
WALL LENGTH WHERE HT TO GRADE  
FROM SUBFLR > 4' = 52'.  
TOTAL PERIMETER LENGTH = 163'.  
 $\frac{52}{163} = .32$   
32% OF 627 S.F. = 201 S.F.

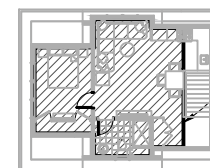
## DETACHED STRUCTURE

### 1/2 STORY CALCULATION

Ground Level 700 S.F. ( $\frac{2}{3} = 469$ )  
Upper level @ 7 ft. ceiling ht. or more 466 S.F.  
466 < 469 Upper level is a half story.



DETACHED STRUCTURE  
GROUND LEVEL  
700 SQ. FT.



DETACHED STRUCTURE  
UPPER LEVEL 7FT. HT.  
OR MORE  
HABITABLE  
466 SQ. FT.

BRAMSON-BOUDREAU RESIDENCE 33 BERKELY ST NEWTON, MA	TITLE SHEET
<b>Peter Sachs Architect</b> N.C.A.R.B. - A.I.A. 20 Hunter St. Newton, MA 02465	Date & Revision 06/01/2012
Tel.: 617-527-5777 or Cell 617-312-5045 E-Mail: petersachs@gmail.com www.petersachsarchitect.com	A-1