

## Inclusionary Zoning Plan

### Sunrise of Chestnut Hill

#### 11 Florence Street, Chestnut Hill, MA 02467

This Plan is submitted under Zoning Ordinance Section 5.11.11.

Sunrise of Chestnut Hill will comply with Section 5.11 of the Newton Zoning Ordinance, Inclusionary Zoning sub-section 5.11.11 Elder Housing with Services as set forth herein.

The Elder Housing with Services development will include one hundred and twenty (120) beds, six (6) of which beds will be inclusionary. The six (6) inclusionary beds will be available to eligible households earning up to 80% of AMI. The six (6) beds will be located in two studio units, two twin units, and two Denver units. All six (6) beds will be accessible. Per the ordinance, total monthly housing costs for this facility may not exceed 30% of the applicable household income and there will be no entrance fee applicable to the inclusionary beds.

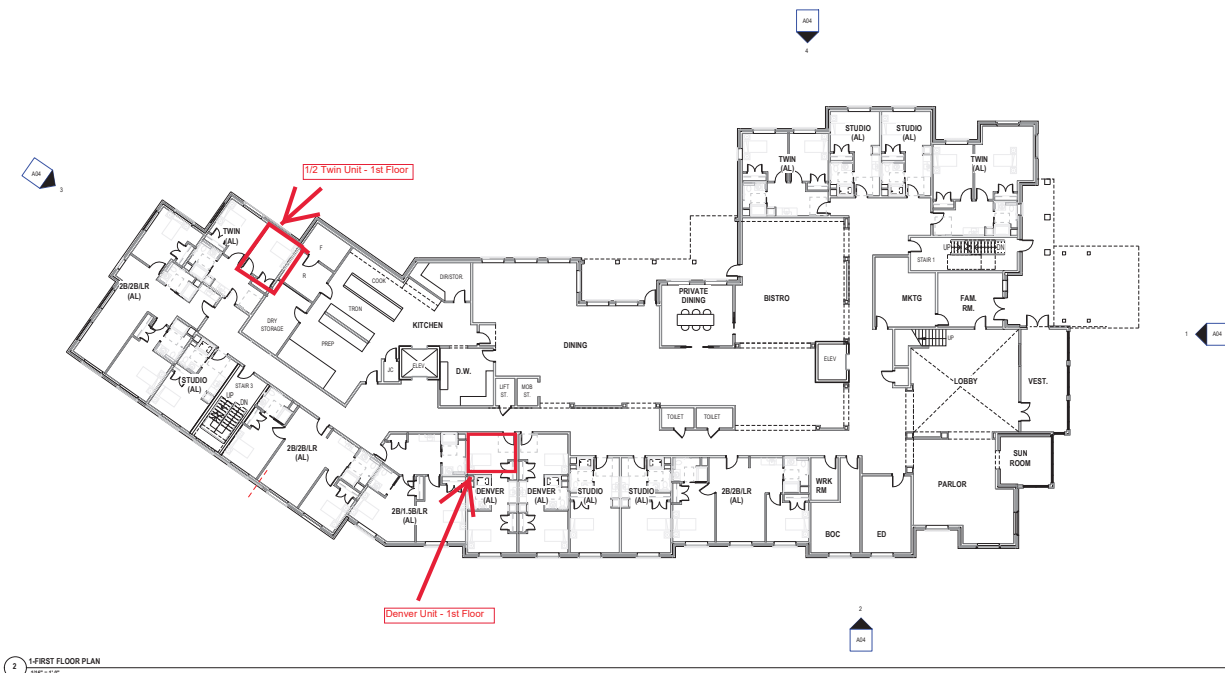
The six (6) inclusionary units will consist of:

- ½ Denver Unit – First Floor (AL)
- ½ Twin Unit – First Floor (AL)
- Studio Unit – Second Floor (AL)
- ½ Twin Unit – Second Floor (AL)
- Studio Unit – Fifth Floor (AL)
- ½ Denver Unit - Fifth Floor (AL)

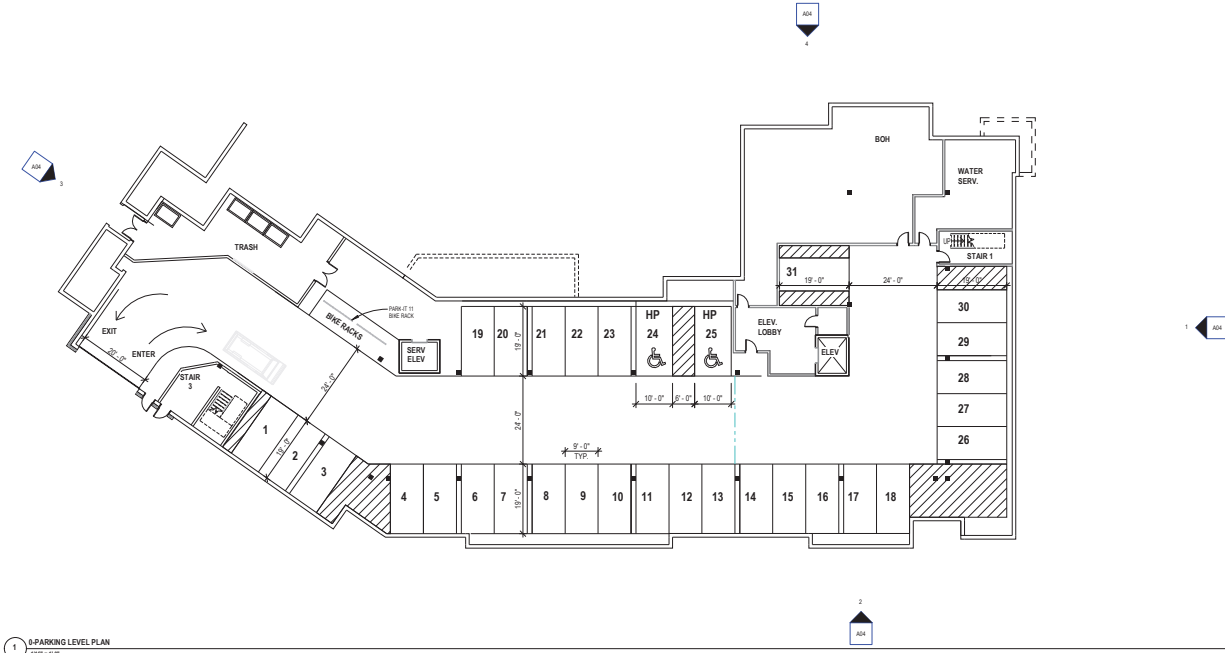
A set of floor plans is provided for reference with location of the inclusionary beds noted. The 3rd and 4th floors are all memory care.

Pursuant to Section 5.11.8, Sunrise Development, Inc. will submit an Affirmative Fair Housing Marketing and Resident Selection Plan to the Director of Planning and Development for review prior to commencing any public offerings for sale. The inclusionary units will be subject to an affordable housing covenant approved in accordance with Section 5.11.11. F, and base amenities and services comparable to the base amenities and services offered to all residents of Sunrise Development, Inc. (Chestnut Hill) will be included within the rent for the inclusionary beds.





1 - FIRST FLOOR PLAN  
1/16" = 1'-0"



2 - PARKING LEVEL PLAN  
1/16" = 1'-0"

SUNRISE OF  
CHESTNUT HILL

FLORENCE STREET  
NEWTON, MA



SUNRISE DEVELOPMENT, INC.

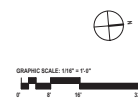


Scale: 1/16" = 1'-0"  
Date: 3-25-2022  
Project Number: P170.00

REVISIONS		
NO.	DESCRIPTION	DATE

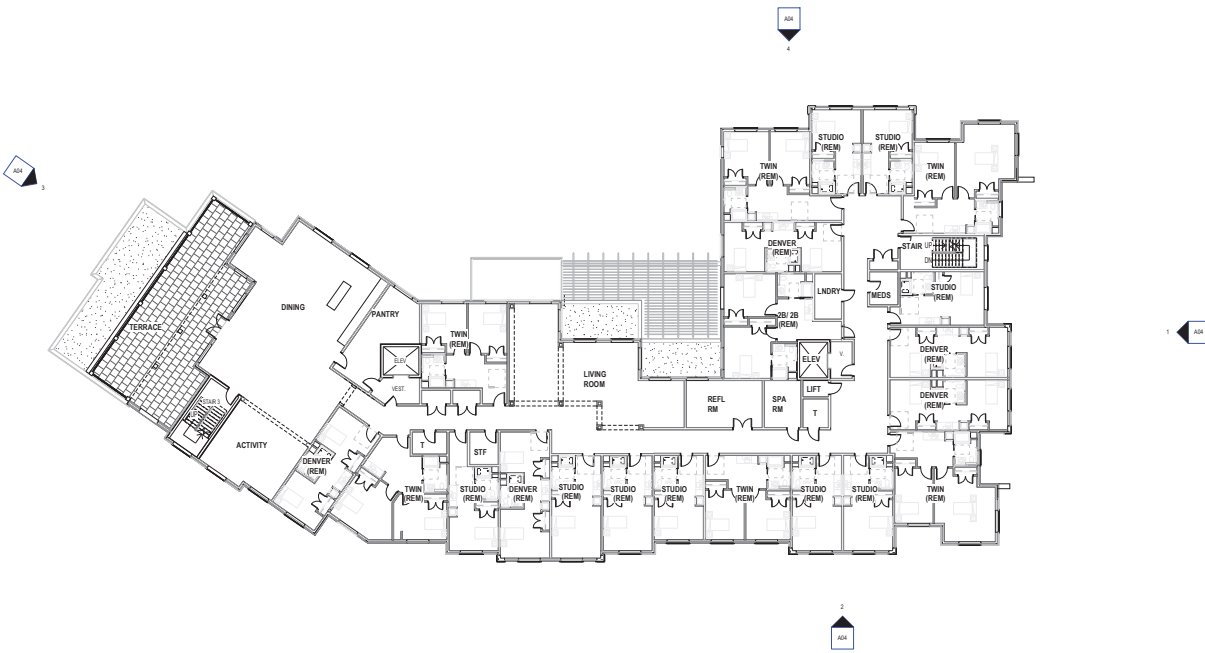
PROGRESS

PARKING  
LEVEL & FIRST  
FLOOR PLANS

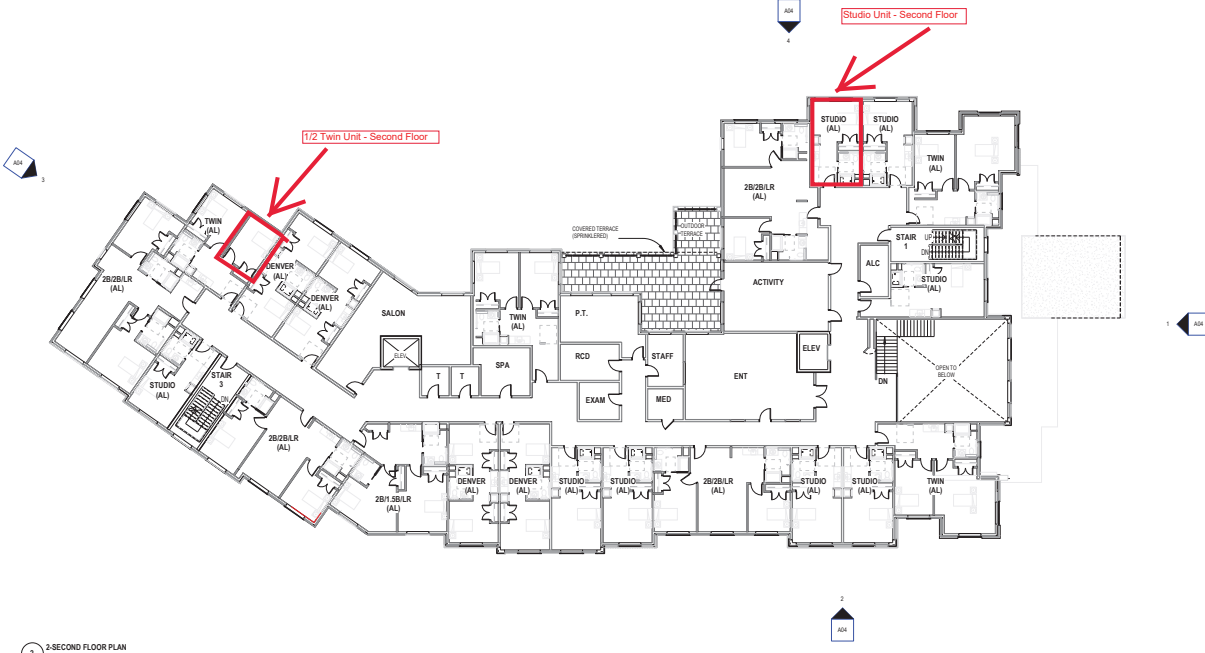


A01

copyright ©



3-THIRD FLOOR PLAN  
1/8" = 1'-0"



3-SECOND FLOOR PLAN  
1/8" = 1'-0"

SUNRISE OF  
CHESTNUT HILL

FLORENCE STREET  
NEWTON, MA



SUNRISE DEVELOPMENT, INC.



Scale: 1/16" = 1'-0"  
Date: 3-25-2022  
Project Number: P170.00

REVISIONS		
NO.	DESCRIPTION	DATE

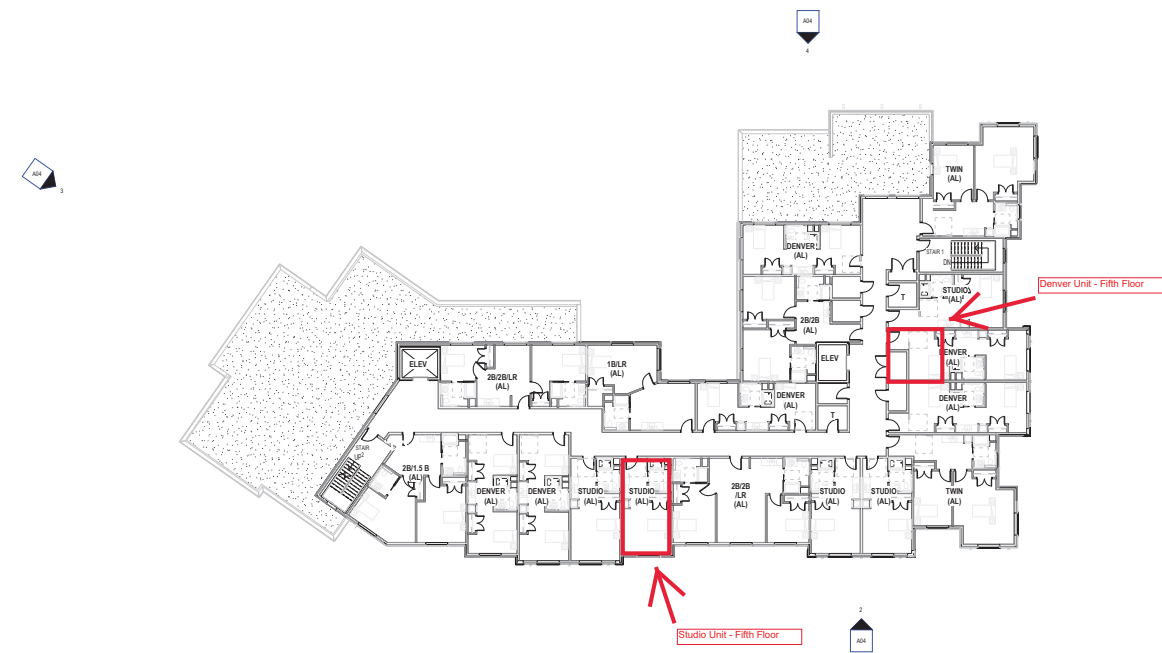
PROGRESS

SECOND &  
THIRD FLOOR  
PLANS

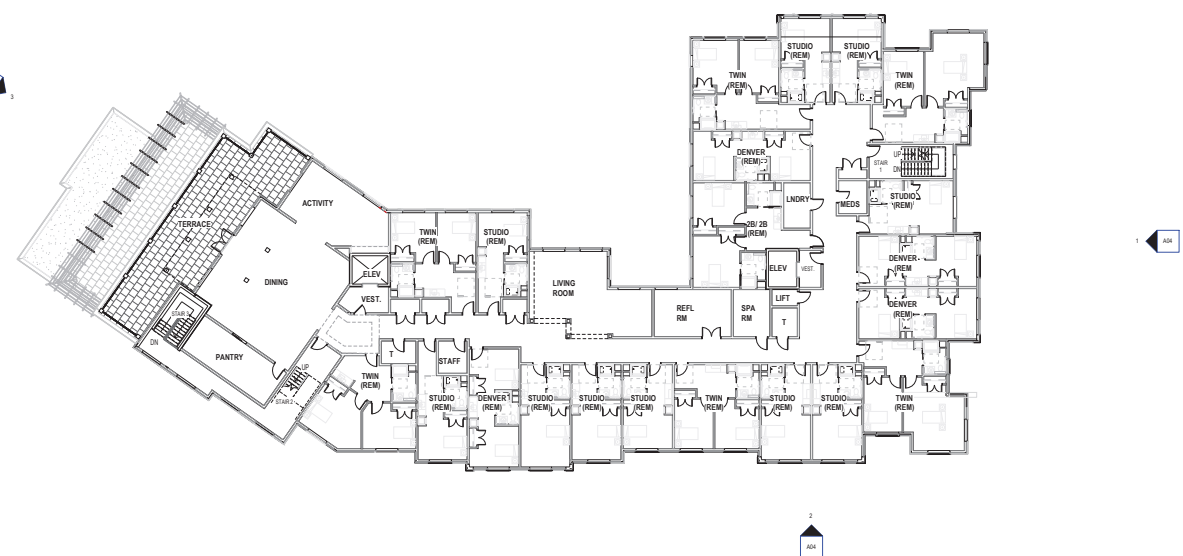
A02



3/23/2022 2:57:02 PM C:\Users\jps\appdata\local\temp\Documents\Sunrise Chestnut Hill CENTRAL 2021\_03e.rvt@jpsinc.com\1



1 FIFTH FLOOR PLAN  
1/16" = 1'-0"



2 FOURTH FLOOR PLAN  
1/16" = 1'-0"



SUNRISE OF  
CHESTNUT HILL

FLORENCE STREET  
NEWTON, MA



SUNRISE DEVELOPMENT, INC.



Scale: 1/16" = 1'-0"  
Date: 3-25-2022  
Project Number: P170.00

REVISIONS		
NO.	DESCRIPTION	DATE

PROGRESS

FOURTH &  
FIFTH FLOOR  
PLANS

A03