



**SURVEYOR'S  
METES AND BOUNDS DESCRIPTION**  
MAP 33, BLOCK 10, LOTS 1, 11, & 12  
CITY OF NEWTON  
MIDDLESEX COUNTY, MASSACHUSETTS

**1314  
WASHINGTON  
STREET**  
WEST NEWTON, MA

**OWNER**  
**MARK DEVELOPMENT**

MARK DEVELOPMENT  
275 GROVE STREET, SUITE 2-150  
NEWTON, MA 02466  
617.614.9149

**DESIGN ARCHITECT**

**DAVID M. SCHWARZ ARCHITECTS**

DAVID M. SCHWARZ ARCHITECTS  
1707 L STREET NW, SUITE 400  
WASHINGTON, DC 20036  
202.862.0777

**CIVIL ENGINEER**

**BOHLER**  
BOHLER ENGINEERING  
352 TURNPIKE ROAD  
SOUTHBOROUGH, MA 01772  
508.480.9900

**LANDSCAPE ARCHITECT**

**HALVORSON**  
TigheB Bond STUDIO

HALVORSON | TIGHE & BOND STUDIO  
25 KINGSTON STREET  
BOSTON, MA 02111-2200  
617.536.0380

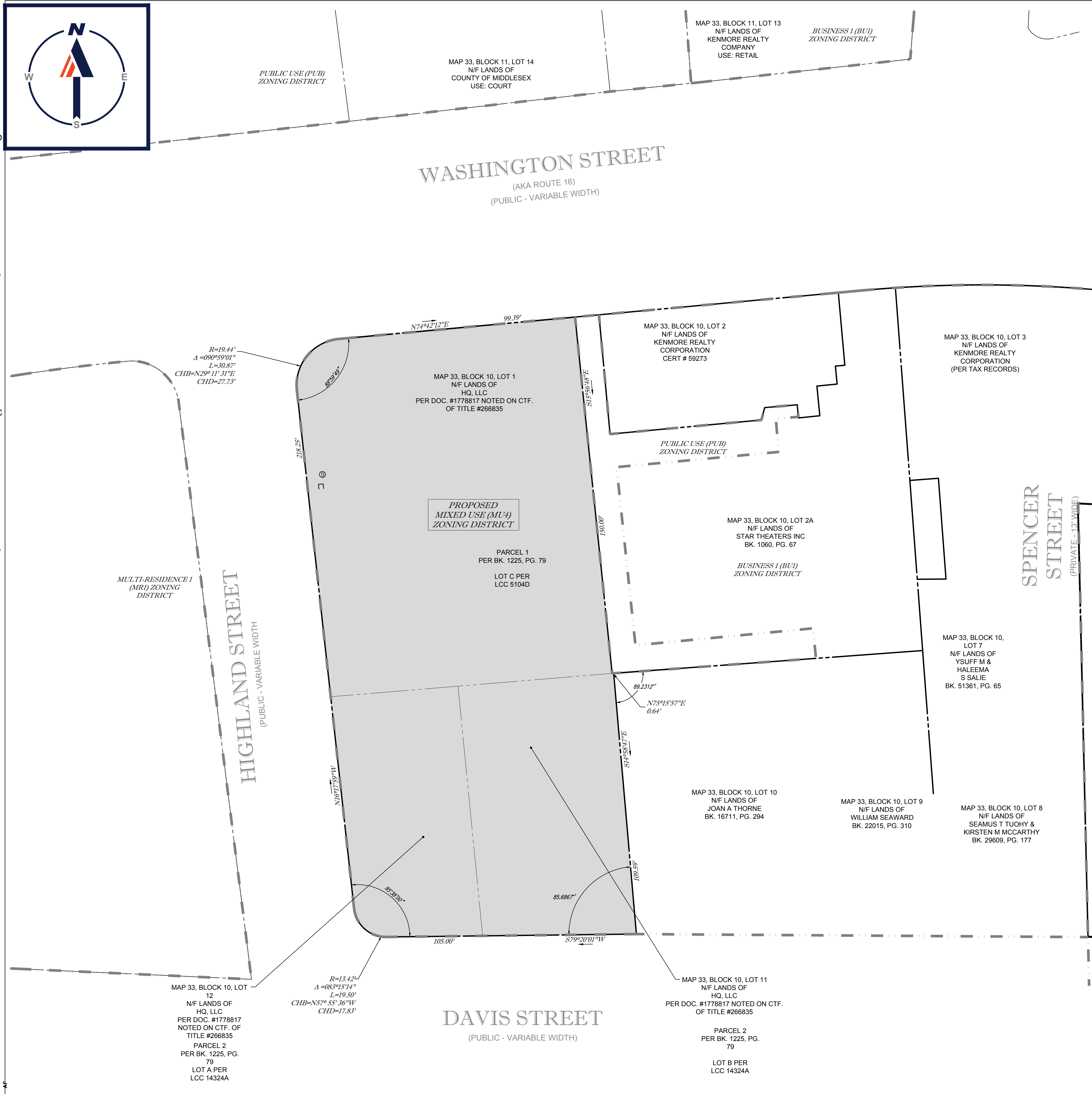
**PROFESSIONAL SEAL**



BEGINNING AT A POINT ON THE SOUTHERLY LINE OF WASHINGTON STREET (AKA ROUTE 16 - PUBLIC- VARIABLE WIDTH) AND FROM SAID POINT OF BEGINNING, RUNNING THENCE;

1. ALONG THE SOUTHERLY LINE OF WASHINGTON STREET, NORTH 74 DEGREES - 42 MINUTES - 12 SECONDS EAST, A DISTANCE OF 99.39 FEET TO A POINT, THENCE;
2. SOUTH 15 DEGREES - 56 MINUTES - 48 SECONDS EAST, A DISTANCE OF 150.00 FEET TO A POINT, THENCE;
3. NORTH 75 DEGREES - 15 MINUTES - 57 SECONDS EAST, A DISTANCE OF 0.64 FEET TO A POINT, THENCE;
4. ALONG THE DIVIDING LINE WITH MAP 33, BLOCK 10, LOT 10, SOUTH 14 DEGREES - 58 MINUTES - 47 SECONDS EAST, A DISTANCE OF 109.59 FEET TO A POINT ON THE NORTHERLY LINE OF DAVIS STREET (PUBLIC - VARIABLE WIDTH), THENCE;
5. ALONG SAID NORTHERLY LINE OF DAVIS STREET, SOUTH 79 DEGREES - 20 MINUTES - 01 SECONDS WEST, A DISTANCE OF 105.00 FEET TO A POINT, THENCE;
6. ALONG A TANGENT CURVE AT THE INTERSECTION OF DAVIS STREET AND HIGHLAND STREET (PUBLIC - VARIABLE WIDTH) HAVING A RADIUS OF 13.42 FEET, A CENTRAL ANGLE OF 83 DEGREES - 15 MINUTES - 14 SECONDS, AN ARC LENGTH OF 19.50 FEET, A CHORD BEARING OF NORTH 57 DEGREES - 55 MINUTES - 36 SECONDS WEST, AND A CHORD DISTANCE OF 17.83 FEET, THENCE;
7. ALONG THE EASTERLY LINE OF HIGHLAND STREET, NORTH 16 DEGREES - 17 MINUTES - 59 SECONDS WEST, A DISTANCE OF 218.25 FEET TO A POINT, THENCE;
8. ALONG A TANGENT CURVE AT THE INTERSECTION OF HIGHLAND STREET AND SAID WASHINGTON STREET HAVING A RADIUS OF 19.44 FEET, A CENTRAL ANGLE OF 90 DEGREES - 59 MINUTES - 01 SECONDS, AN ARC LENGTH OF 30.87 FEET, A CHORD BEARING OF NORTH 29 DEGREES - 11 MINUTES - 31 SECONDS EAST, AND A CHORD DISTANCE OF 27.73 FEET TO THE POINT AND PLACE OF BEGINNING.

CONTAINING 30,031 SQUARE FEET OR 0.689 ACRES



**REVISIONS**

#	DATE	DESCRIPTION

**REVIEW SET**

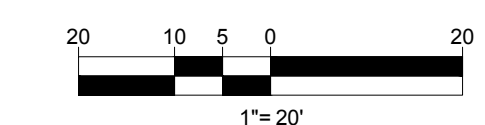
NOT FOR CONSTRUCTION

**ISSUED:** 05/02/2022

**SHEET TITLE:**  
**ZONE CHANGE PLAN**

**SHEET NO.:**

**C4**



I:\BOHLER\NET\SHARES\MA\PROJECTS\2022\MA\22043\20DRAWINGS\PLAN SET\REV\MA\22043\00-8\FPD\JAL...LAYOUT: ZONE CHANGE PLAN