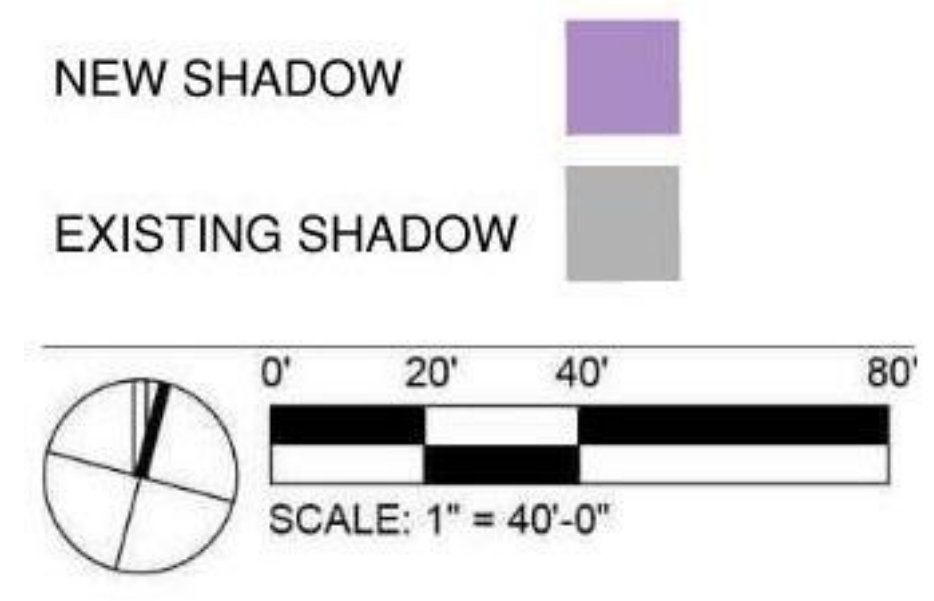


D

C



March 21st - 9am 1
A15

**1314
WASHINGTON
STREET**
WEST NEWTON, MA

OWNER
**MARK
DEVELOPMENT**

MARK DEVELOPMENT
275 GROVE STREET, SUITE 2-150
NEWTON, MA 02466
617.614.9149

DESIGN ARCHITECT
 **DAVID M.
SCHWARZ
ARCHITECTS**

DAVID M. SCHWARZ ARCHITECTS
1707 L STREET NW, SUITE 400
WASHINGTON, DC 20036
202.862.0777

CIVIL ENGINEER
BOHLER //

BOHLER ENGINEERING
352 TURNPIKE ROAD
SOUTHBOROUGH, MA 01772
508.480.9900

LANDSCAPE ARCHITECT
HALVORSON
Tighe&Bond STUDIO

HALVORSON | TIGHE & BOND STUDIO
25 KINGSTON STREET
BOSTON, MA 02111-2200
617.536.0380

PROFESSIONAL SEAL



REVISIONS

#	DATE	DESCRIPTION

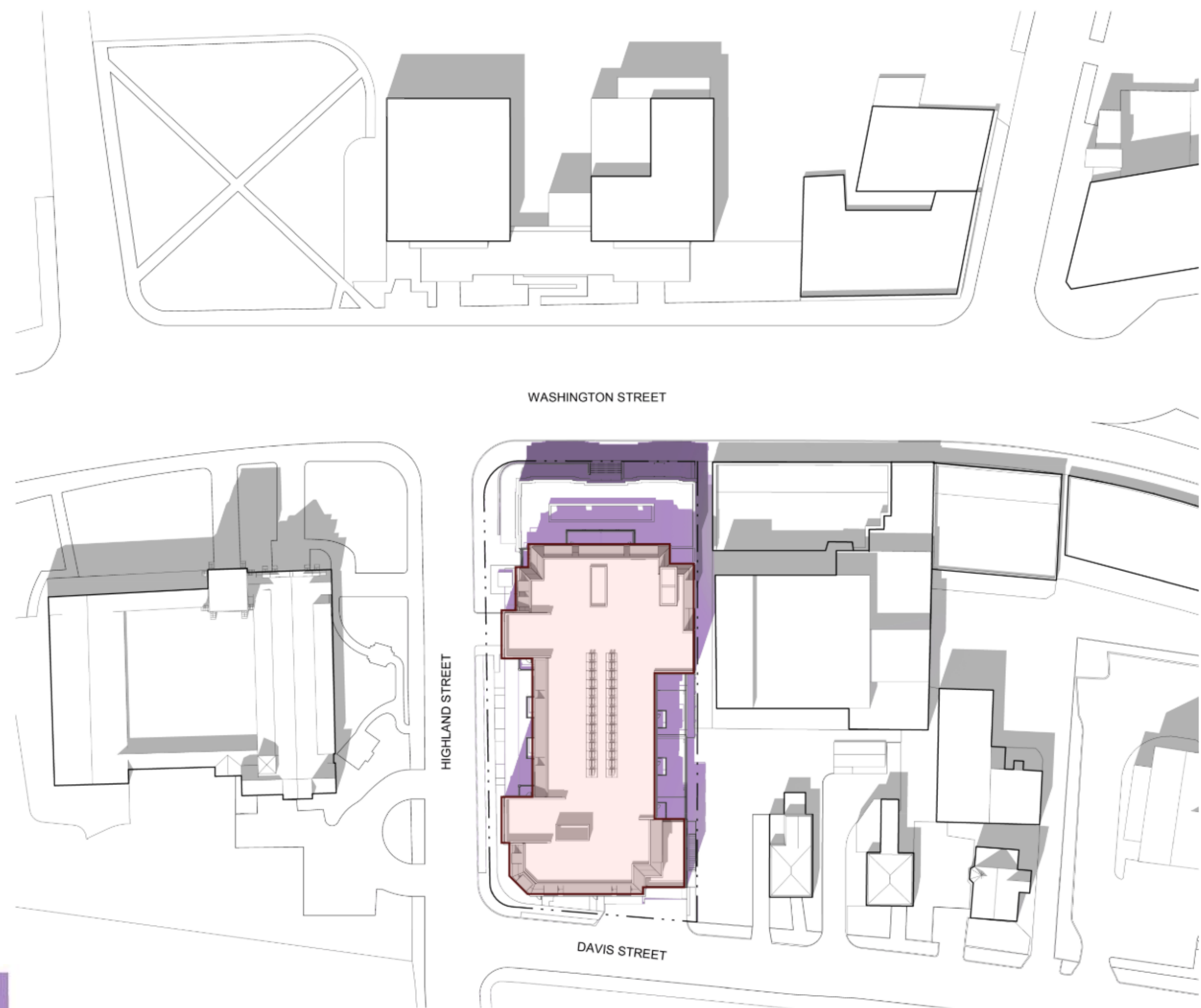
**SPECIAL PERMIT / ZONE
CHANGE PLANS**
NOT FOR
CONSTRUCTION
ISSUED: AUG 19, 2022

SHEET TITLE:
SHADOW STUDY -
MARCH 9AM

SHEET NO.:
A15

D

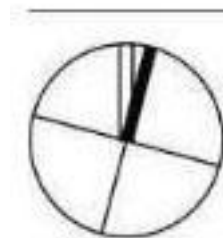
C



NEW SHADOW



EXISTING SHADOW



0' 20' 40' 80'

SCALE: 1" = 40'-0"

March 21st - 12pm

1
A16

**1314
WASHINGTON
STREET**

WEST NEWTON, MA

OWNER
**MARK
DEVELOPMENT**

MARK DEVELOPMENT
275 GROVE STREET, SUITE 2-150
NEWTON, MA 02466
617.614.9149

DESIGN ARCHITECT
**DAVID M.
SCHWARZ
ARCHITECTS**

DAVID M. SCHWARZ ARCHITECTS
1707 L STREET NW, SUITE 400
WASHINGTON, DC 20036
202.862.0777

CIVIL ENGINEER
BOHLER //

BOHLER ENGINEERING
352 TURNPIKE ROAD
SOUTHBOROUGH, MA 01772
508.480.9900

LANDSCAPE ARCHITECT
**HALVORSON
Tighe&Bond STUDIO**

HALVORSON | TIGHE & BOND STUDIO
25 KINGSTON STREET
BOSTON, MA 02111-2200
617.536.0380

PROFESSIONAL SEAL



REVISIONS

#	DATE	DESCRIPTION

**SPECIAL PERMIT / ZONE
CHANGE PLANS**

NOT FOR
CONSTRUCTION
ISSUED: AUG 19, 2022

SHEET TITLE:
SHADOW STUDY -
MARCH 12PM

SHEET NO.:

A16

**1314
WASHINGTON
STREET**
WEST NEWTON, MA

OWNER
**MARK
DEVELOPMENT**

MARK DEVELOPMENT
275 GROVE STREET, SUITE 2-150
NEWTON, MA 02466
617.614.9149

DESIGN ARCHITECT
**DAVID M.
SCHWARZ
ARCHITECTS**

DAVID M. SCHWARZ ARCHITECTS
1707 L STREET NW, SUITE 400
WASHINGTON, DC 20036
202.862.0777

CIVIL ENGINEER
BOHLER //

BOHLER ENGINEERING
352 TURNPIKE ROAD
SOUTHBOROUGH, MA 01772
508.480.9900

LANDSCAPE ARCHITECT
**HALVORSON
Tighe&Bond STUDIO**

HALVORSON | TIGHE & BOND STUDIO
25 KINGSTON STREET
BOSTON, MA 02111-2200
617.536.0380

PROFESSIONAL SEAL



REVISIONS

#	DATE	DESCRIPTION

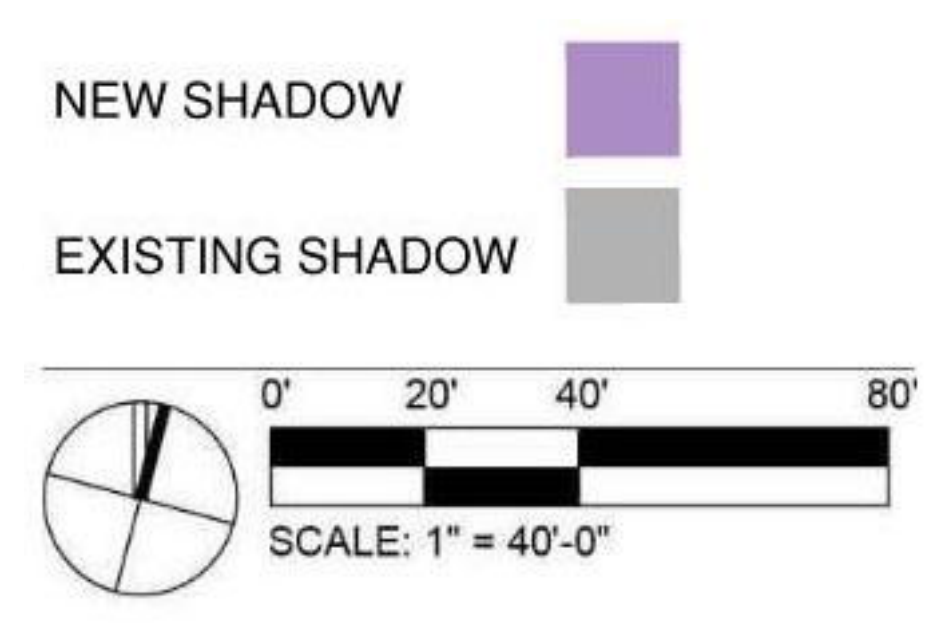
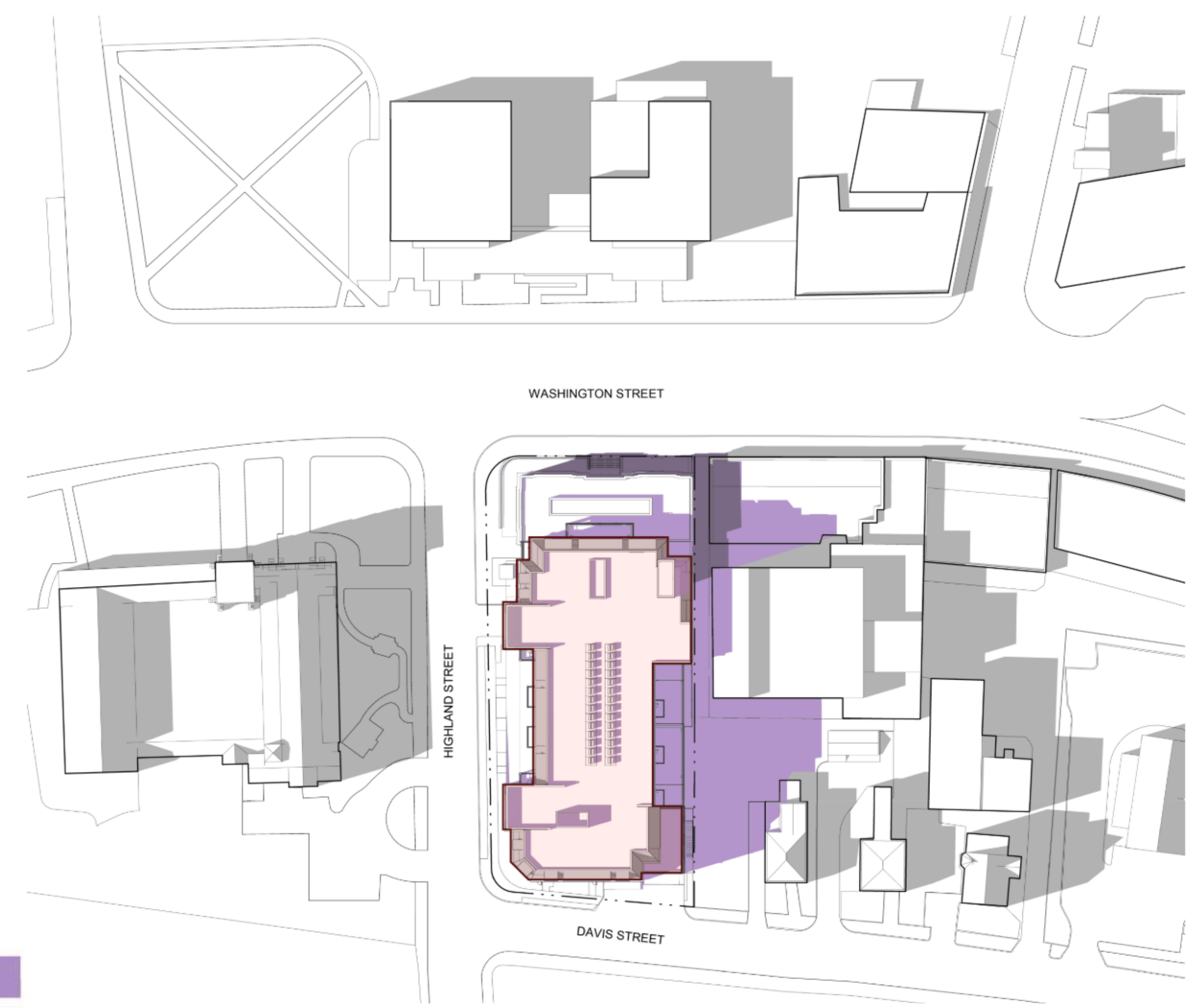
**SPECIAL PERMIT / ZONE
CHANGE PLANS**

NOT FOR
CONSTRUCTION
ISSUED: AUG 19, 2022

SHEET TITLE:
SHADOW STUDY -
MARCH 3PM

SHEET NO.:

A17



March 21st - 3pm 1
A17

**1314
WASHINGTON
STREET**
WEST NEWTON, MA

OWNER
**MARK
DEVELOPMENT**

MARK DEVELOPMENT
275 GROVE STREET, SUITE 2-150
NEWTON, MA 02466
617.614.9149

DESIGN ARCHITECT
**DAVID M.
SCHWARZ
ARCHITECTS**

DAVID M. SCHWARZ ARCHITECTS
1707 L STREET NW, SUITE 400
WASHINGTON, DC 20036
202.862.0777

CIVIL ENGINEER
BOHLER //

BOHLER ENGINEERING
352 TURNPIKE ROAD
SOUTHBOROUGH, MA 01772
508.480.9900

LANDSCAPE ARCHITECT
**HALVORSON
Tighe&Bond STUDIO**

HALVORSON | TIGHE & BOND STUDIO
25 KINGSTON STREET
BOSTON, MA 02111-2200
617.536.0380

PROFESSIONAL SEAL



REVISIONS

#	DATE	DESCRIPTION

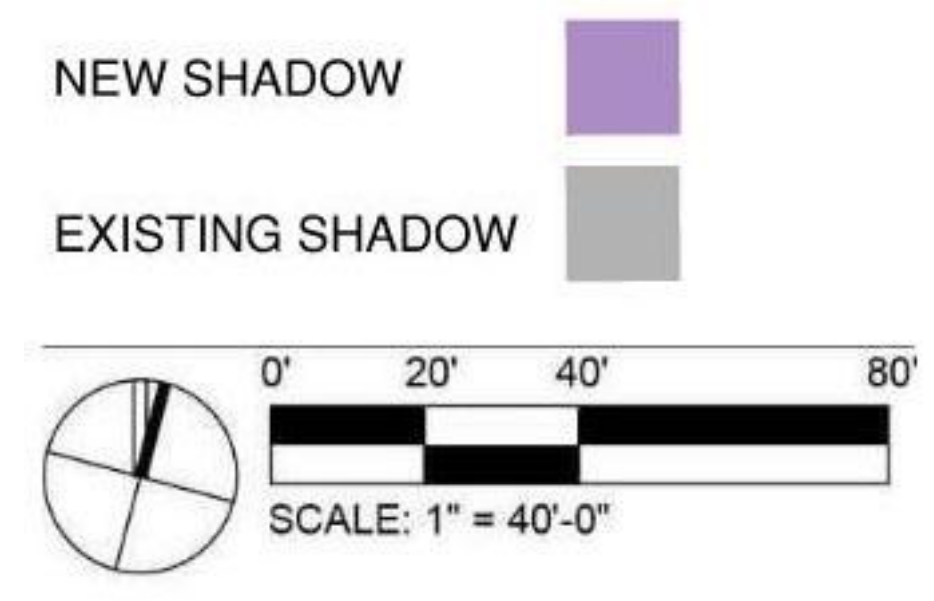
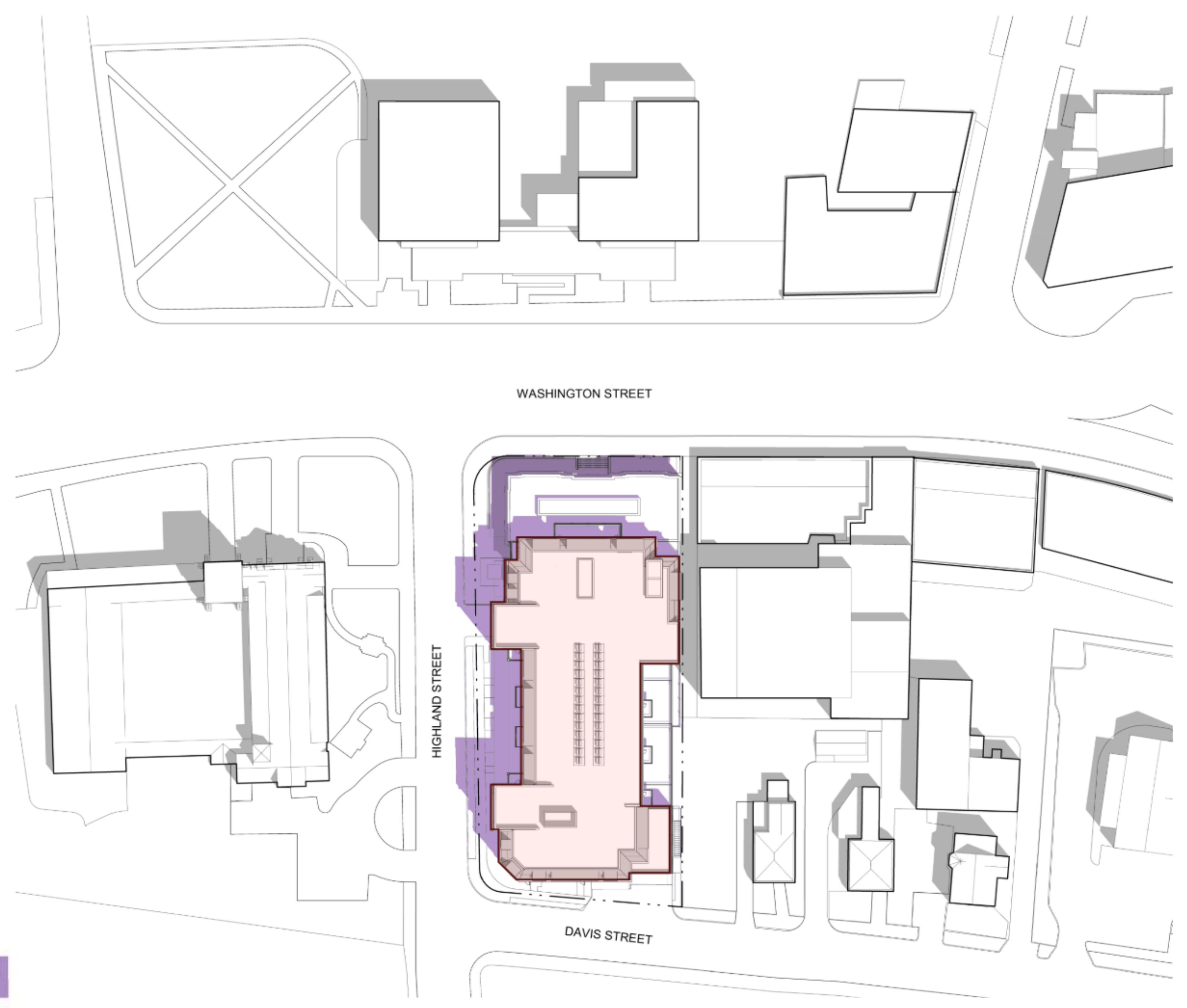
**SPECIAL PERMIT / ZONE
CHANGE PLANS**

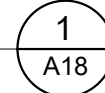
NOT FOR
CONSTRUCTION
ISSUED: AUG 19, 2022

SHEET TITLE:
SHADOW STUDY -
JUNE 9AM

SHEET NO.:

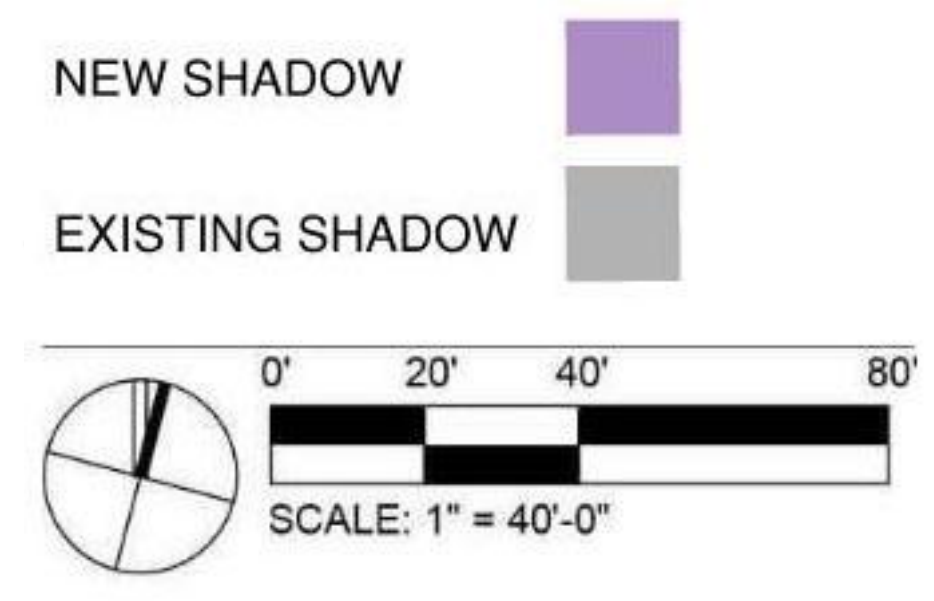
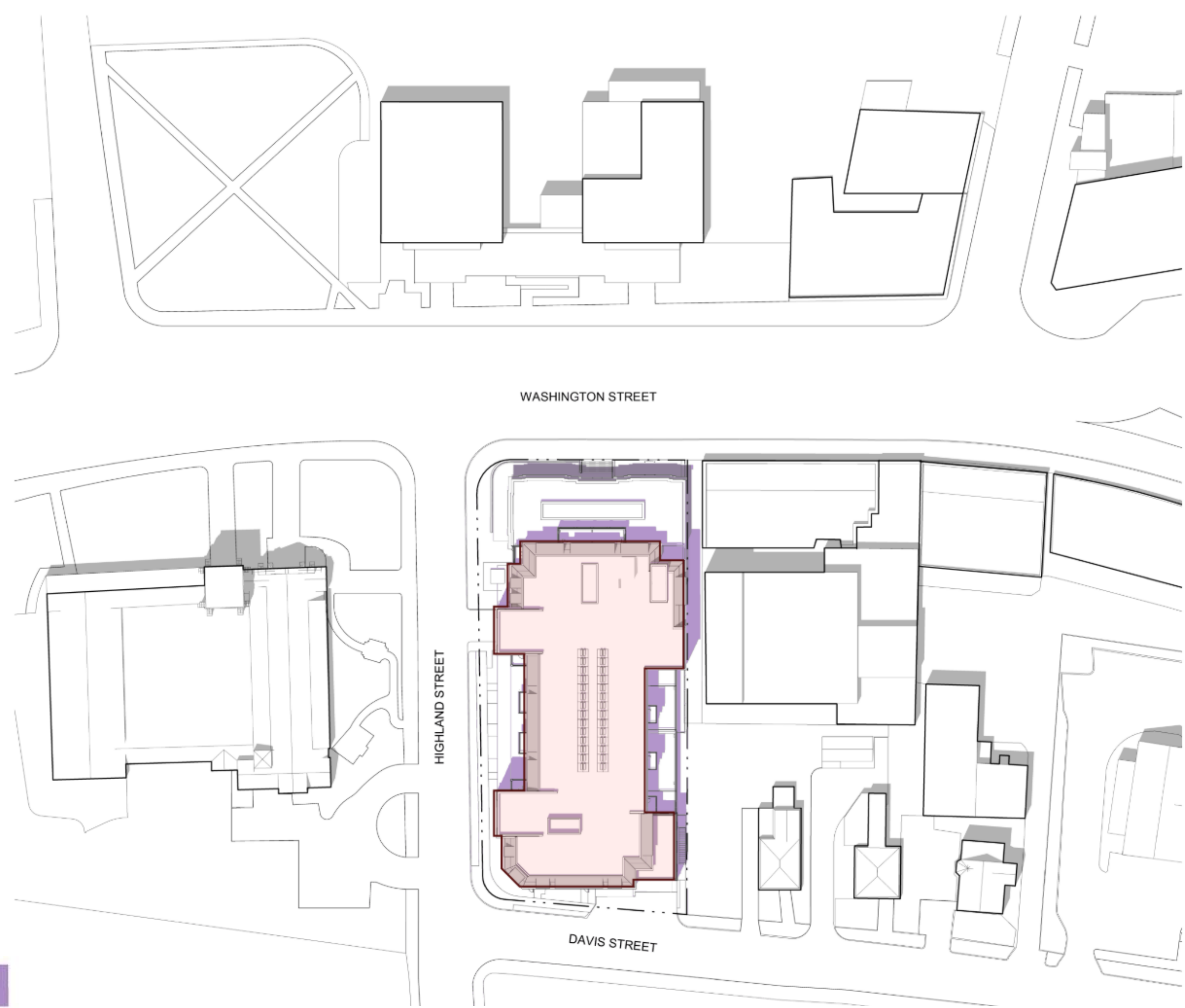
A18



JUNE 21st - 9 AM 

D

C



June 21st - 12pm 1
A19

**1314
WASHINGTON
STREET**
WEST NEWTON, MA

OWNER
**MARK
DEVELOPMENT**

MARK DEVELOPMENT
275 GROVE STREET, SUITE 2-150
NEWTON, MA 02466
617.614.9149

DESIGN ARCHITECT
 **DAVID M.
SCHWARZ
ARCHITECTS**

DAVID M. SCHWARZ ARCHITECTS
1707 L STREET NW, SUITE 400
WASHINGTON, DC 20036
202.862.0777

CIVIL ENGINEER
BOHLER //

BOHLER ENGINEERING
352 TURNPIKE ROAD
SOUTHBOROUGH, MA 01772
508.480.9900

LANDSCAPE ARCHITECT
HALVORSON
Tighe&Bond STUDIO

HALVORSON | TIGHE & BOND STUDIO
25 KINGSTON STREET
BOSTON, MA 02111-2200
617.536.0380

PROFESSIONAL SEAL



REVISIONS

#	DATE	DESCRIPTION

**SPECIAL PERMIT / ZONE
CHANGE PLANS**

NOT FOR
CONSTRUCTION
ISSUED: AUG 19, 2022

SHEET TITLE:
SHADOW STUDY -
JUNE 12PM

SHEET NO.:
A19

**1314
WASHINGTON
STREET**
WEST NEWTON, MA

OWNER
**MARK
DEVELOPMENT**

MARK DEVELOPMENT
275 GROVE STREET, SUITE 2-150
NEWTON, MA 02466
617.614.9149

DESIGN ARCHITECT
**DAVID M.
SCHWARZ
ARCHITECTS**

DAVID M. SCHWARZ ARCHITECTS
1707 L STREET NW, SUITE 400
WASHINGTON, DC 20036
202.862.0777

CIVIL ENGINEER
BOHLER //

BOHLER ENGINEERING
352 TURNPIKE ROAD
SOUTHBOROUGH, MA 01772
508.480.9900

LANDSCAPE ARCHITECT
**HALVORSON
Tighe&Bond STUDIO**

HALVORSON | TIGHE & BOND STUDIO
25 KINGSTON STREET
BOSTON, MA 02111-2200
617.536.0380

PROFESSIONAL SEAL



REVISIONS

#	DATE	DESCRIPTION

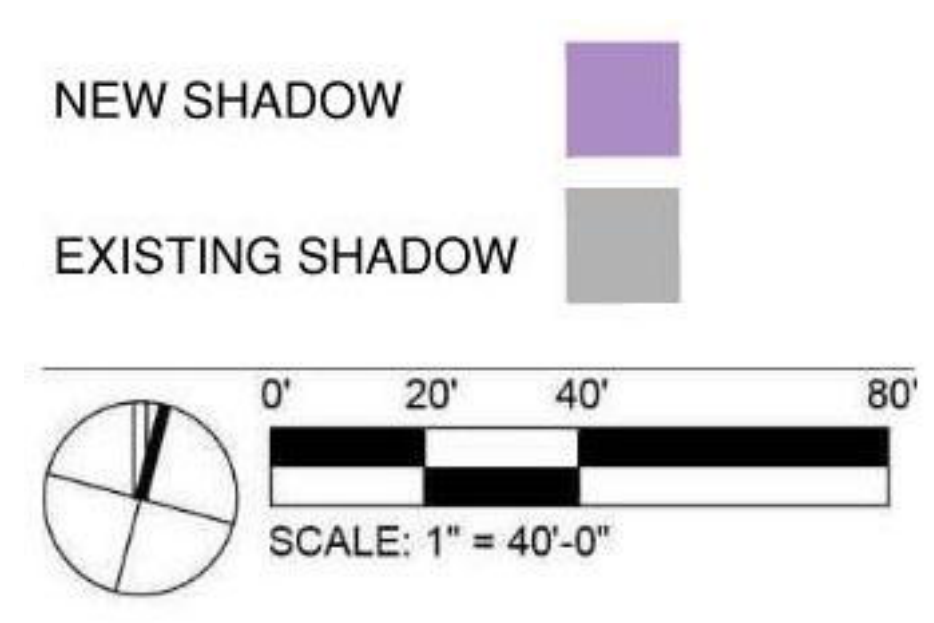
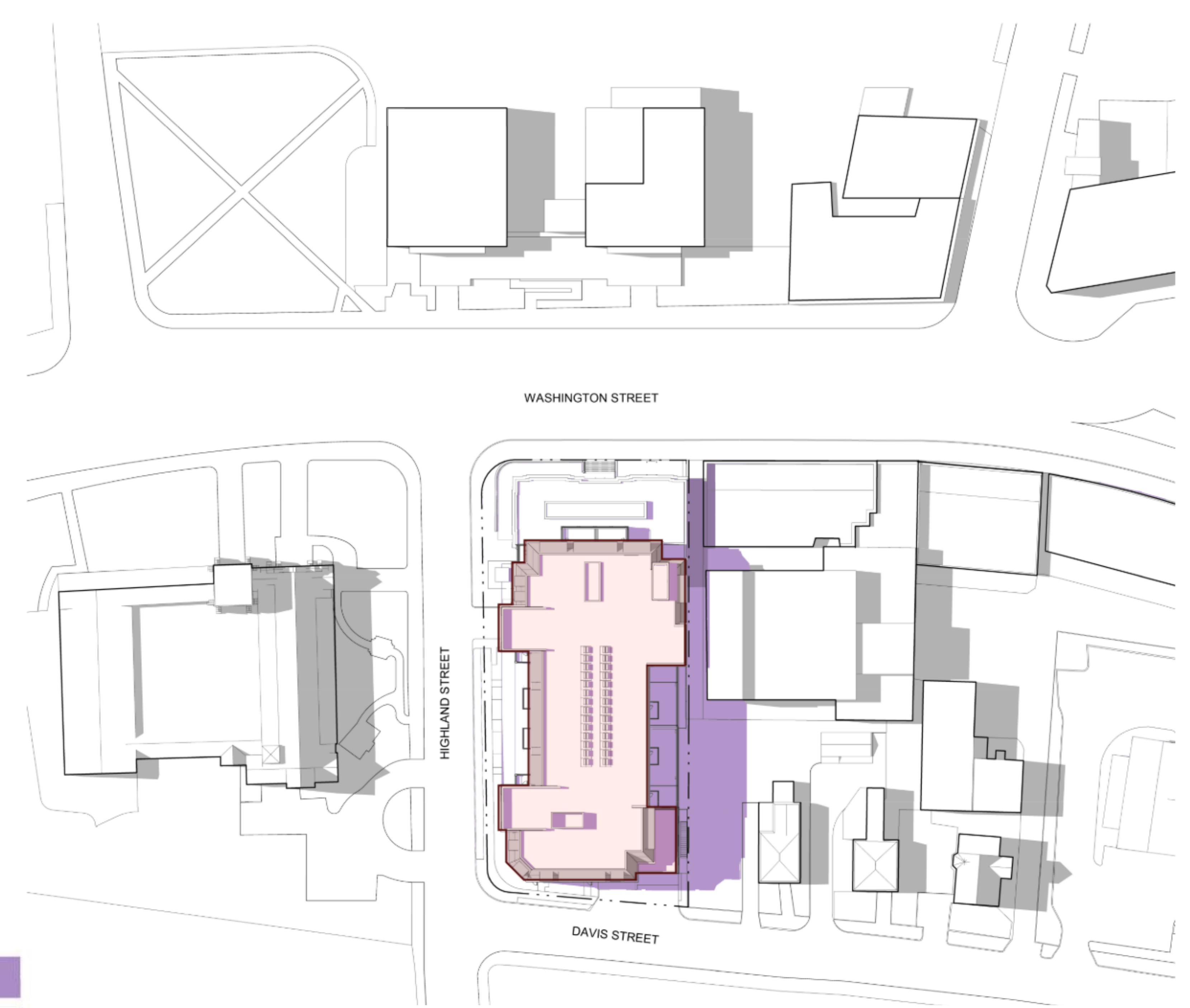
**SPECIAL PERMIT / ZONE
CHANGE PLANS**

NOT FOR
CONSTRUCTION
ISSUED: AUG 19, 2022

SHEET TITLE:
SHADOW STUDY -
JUNE 3PM

SHEET NO.:

A20



June 21st - 3pm 1
A20

**1314
WASHINGTON
STREET**
WEST NEWTON, MA

OWNER
**MARK
DEVELOPMENT**

MARK DEVELOPMENT
275 GROVE STREET, SUITE 2-150
NEWTON, MA 02466
617.614.9149

DESIGN ARCHITECT
**DAVID M.
SCHWARZ
ARCHITECTS**

DAVID M. SCHWARZ ARCHITECTS
1707 L STREET NW, SUITE 400
WASHINGTON, DC 20036
202.862.0777

CIVIL ENGINEER
BOHLER //

BOHLER ENGINEERING
352 TURNPIKE ROAD
SOUTHBOROUGH, MA 01772
508.480.9900

LANDSCAPE ARCHITECT
**HALVORSON
Tighe&Bond STUDIO**

HALVORSON | TIGHE & BOND STUDIO
25 KINGSTON STREET
BOSTON, MA 02111-2200
617.536.0380

PROFESSIONAL SEAL



REVISIONS

#	DATE	DESCRIPTION

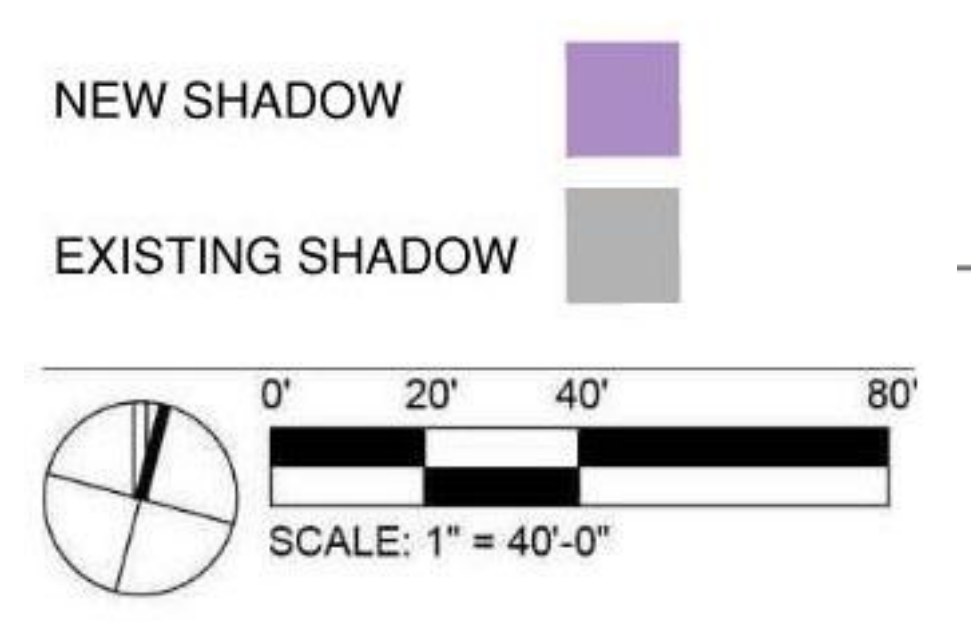
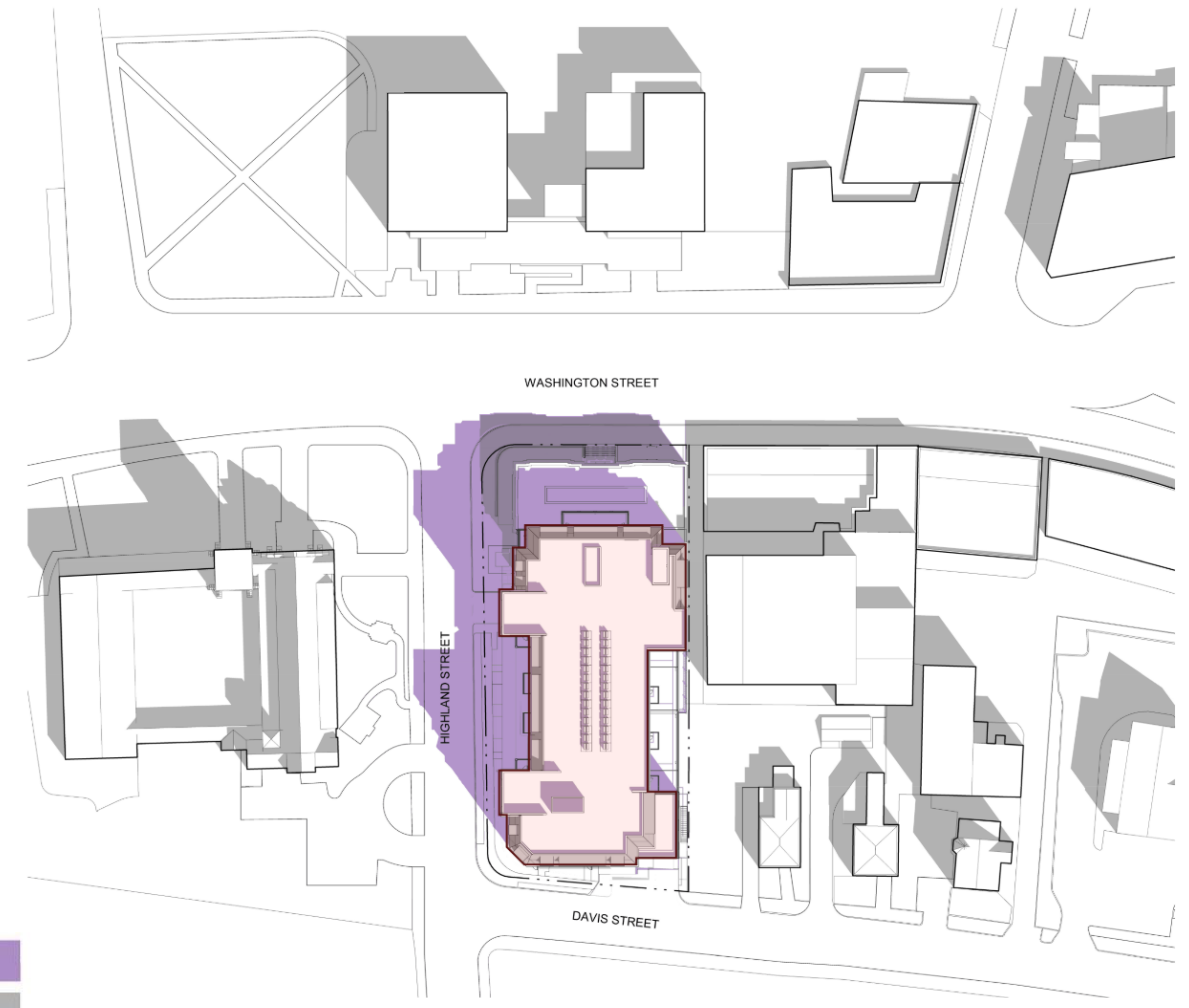
**SPECIAL PERMIT / ZONE
CHANGE PLANS**

NOT FOR
CONSTRUCTION
ISSUED: AUG 19, 2022

SHEET TITLE:
SHADOW STUDY -
SEPTEMBER 9AM

SHEET NO.:

A21



September 21st - 9am 1
A21

**1314
WASHINGTON
STREET**
WEST NEWTON, MA

OWNER
**MARK
DEVELOPMENT**

MARK DEVELOPMENT
275 GROVE STREET, SUITE 2-150
NEWTON, MA 02466
617.614.9149

DESIGN ARCHITECT
**DAVID M.
SCHWARZ
ARCHITECTS**

DAVID M. SCHWARZ ARCHITECTS
1707 L STREET NW, SUITE 400
WASHINGTON, DC 20036
202.862.0777

CIVIL ENGINEER
BOHLER //

BOHLER ENGINEERING
352 TURNPIKE ROAD
SOUTHBOROUGH, MA 01772
508.480.9900

LANDSCAPE ARCHITECT
**HALVORSON
Tighe&Bond STUDIO**

HALVORSON | TIGHE & BOND STUDIO
25 KINGSTON STREET
BOSTON, MA 02111-2200
617.536.0380

PROFESSIONAL SEAL



REVISIONS

#	DATE	DESCRIPTION

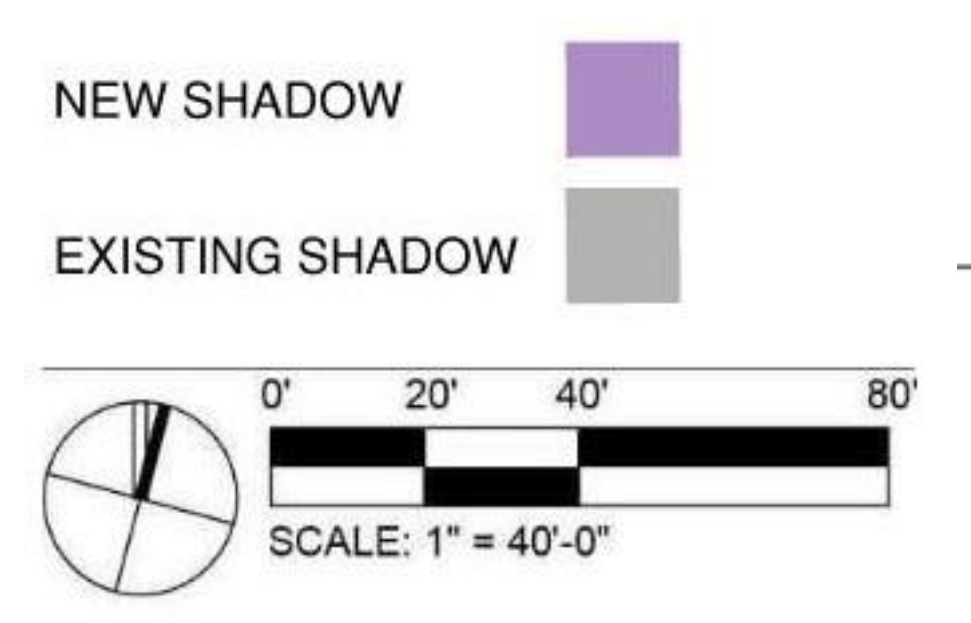
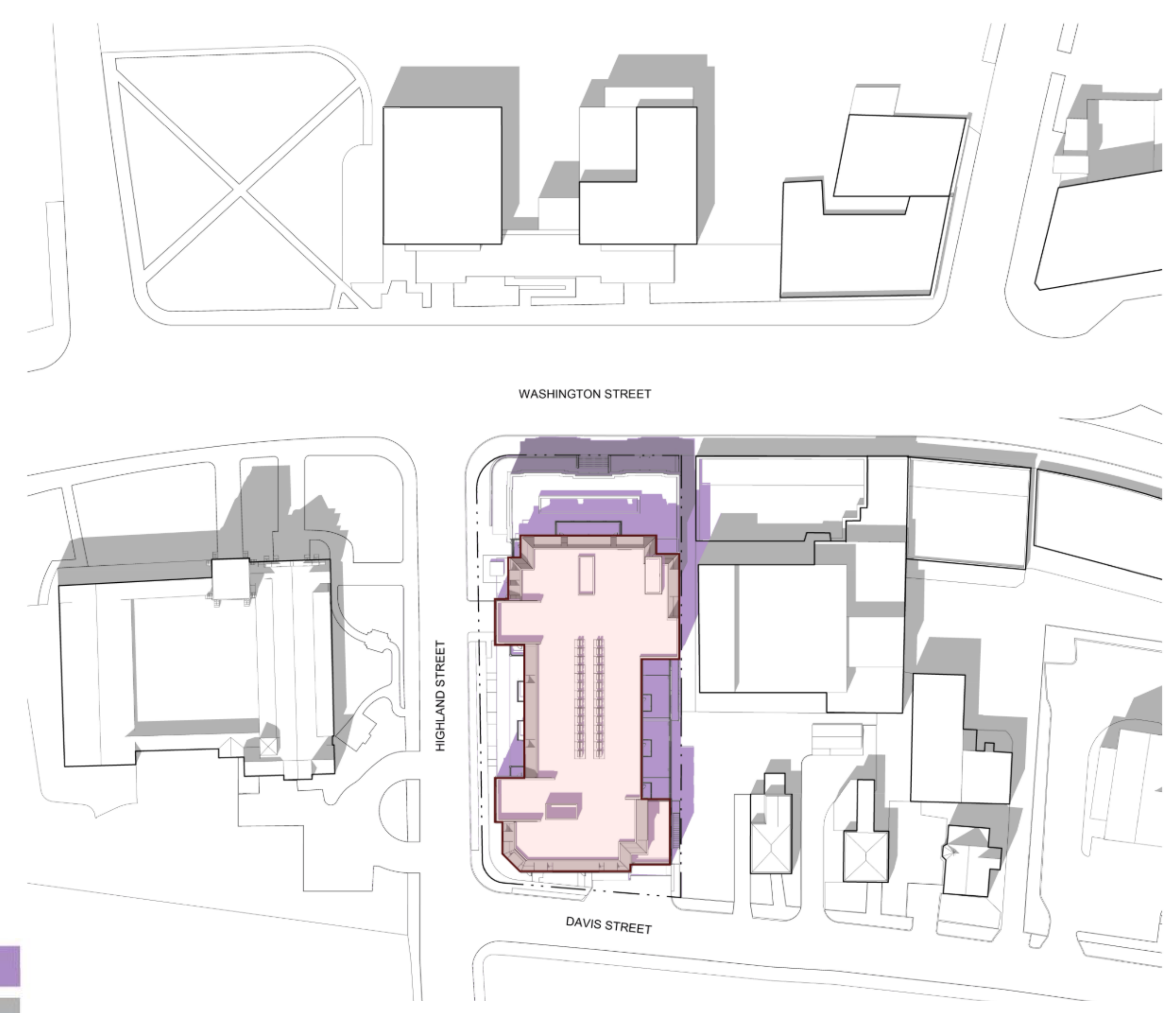
**SPECIAL PERMIT / ZONE
CHANGE PLANS**

NOT FOR
CONSTRUCTION
ISSUED: AUG 19, 2022

SHEET TITLE:
SHADOW STUDY -
SEPTEMBER 12PM

SHEET NO.:

A22



September 21st - 12pm 1
A22

**1314
WASHINGTON
STREET**
WEST NEWTON, MA

OWNER
**MARK
DEVELOPMENT**

MARK DEVELOPMENT
275 GROVE STREET, SUITE 2-150
NEWTON, MA 02466
617.614.9149

DESIGN ARCHITECT
**DAVID M.
SCHWARZ
ARCHITECTS**

DAVID M. SCHWARZ ARCHITECTS
1707 L STREET NW, SUITE 400
WASHINGTON, DC 20036
202.862.0777

CIVIL ENGINEER
BOHLER //

BOHLER ENGINEERING
352 TURNPIKE ROAD
SOUTHBOROUGH, MA 01772
508.480.9900

LANDSCAPE ARCHITECT
**HALVORSON
Tighe&Bond STUDIO**

HALVORSON | TIGHE & BOND STUDIO
25 KINGSTON STREET
BOSTON, MA 02111-2200
617.536.0380

PROFESSIONAL SEAL



REVISIONS

#	DATE	DESCRIPTION

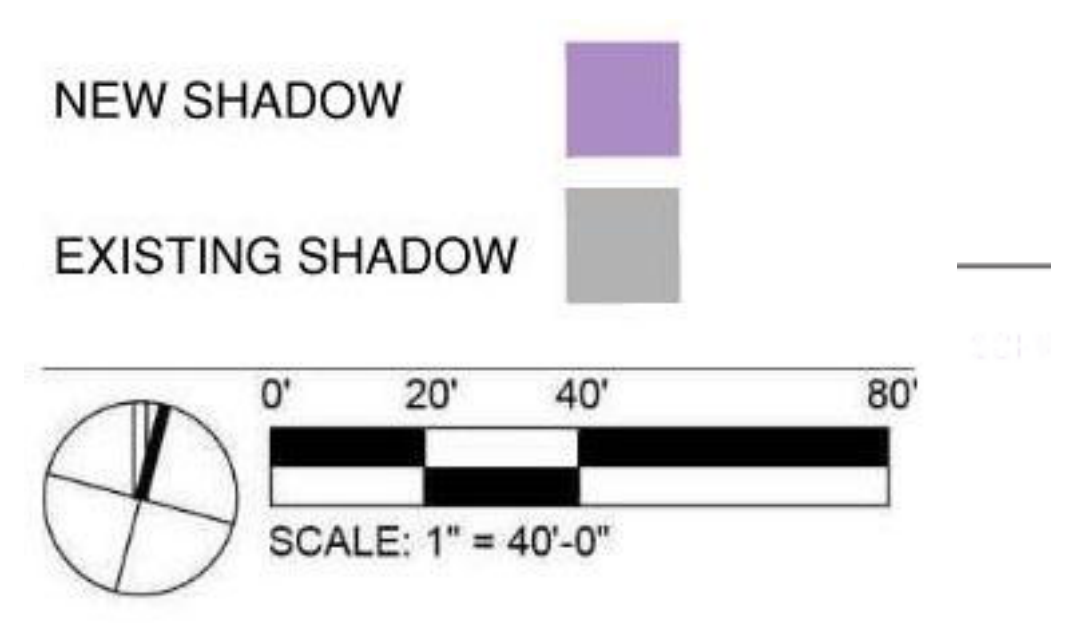
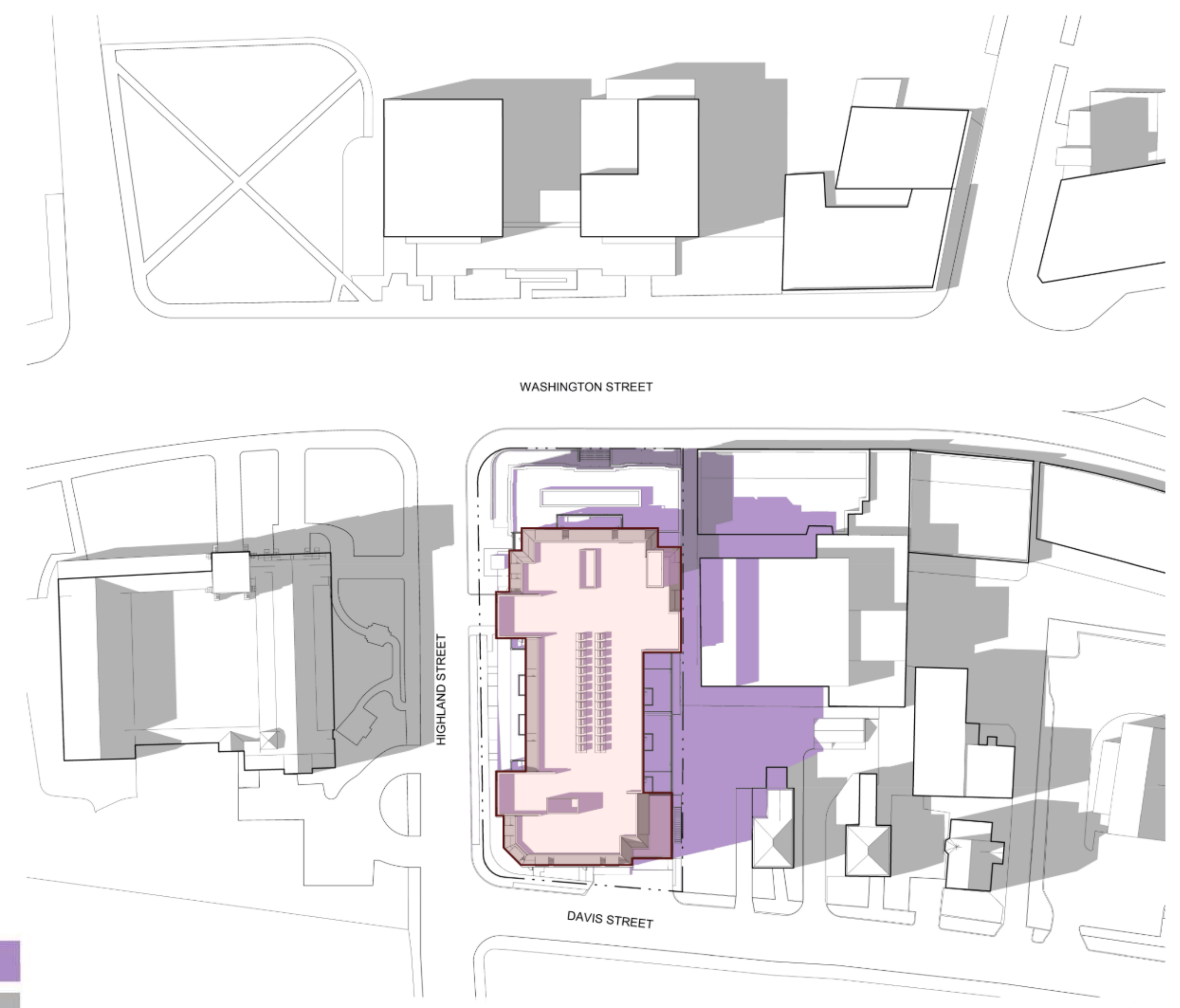
**SPECIAL PERMIT / ZONE
CHANGE PLANS**

NOT FOR
CONSTRUCTION
ISSUED: AUG 19, 2022

SHEET TITLE:
SHADOW STUDY -
SEPTEMBER 3PM

SHEET NO.:

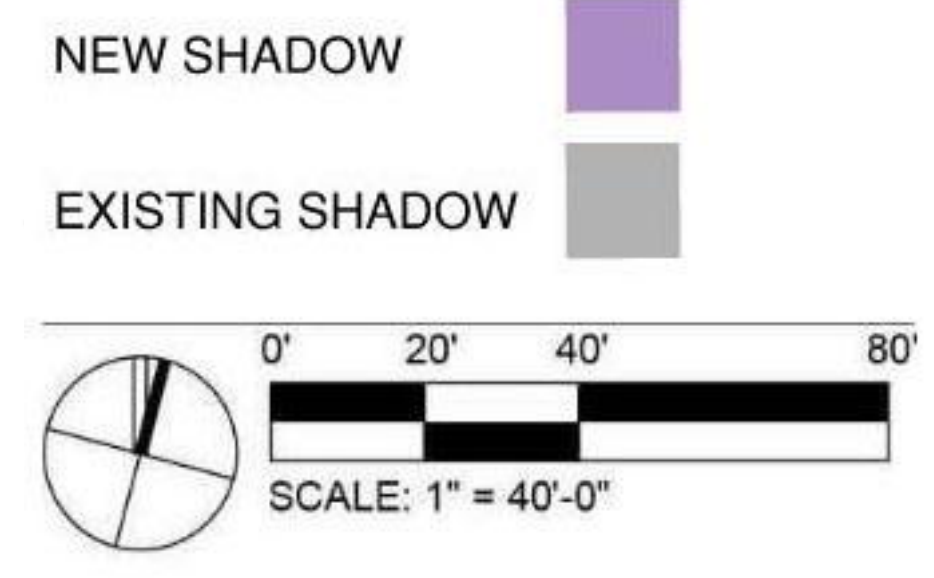
A23



September 21st - 3pm 1
A23

D

C



December 21st - 9am 1
A24

**1314
WASHINGTON
STREET**
WEST NEWTON, MA

OWNER
**MARK
DEVELOPMENT**

MARK DEVELOPMENT
275 GROVE STREET, SUITE 2-150
NEWTON, MA 02466
617.614.9149

DESIGN ARCHITECT
 **DAVID M.
SCHWARZ
ARCHITECTS**

DAVID M. SCHWARZ ARCHITECTS
1707 L STREET NW, SUITE 400
WASHINGTON, DC 20036
202.862.0777

CIVIL ENGINEER
BOHLER //

BOHLER ENGINEERING
352 TURNPIKE ROAD
SOUTHBOROUGH, MA 01772
508.480.9900

LANDSCAPE ARCHITECT
HALVORSON
Tighe&Bond STUDIO

HALVORSON | TIGHE & BOND STUDIO
25 KINGSTON STREET
BOSTON, MA 02111-2200
617.536.0380

PROFESSIONAL SEAL



REVISIONS

#	DATE	DESCRIPTION

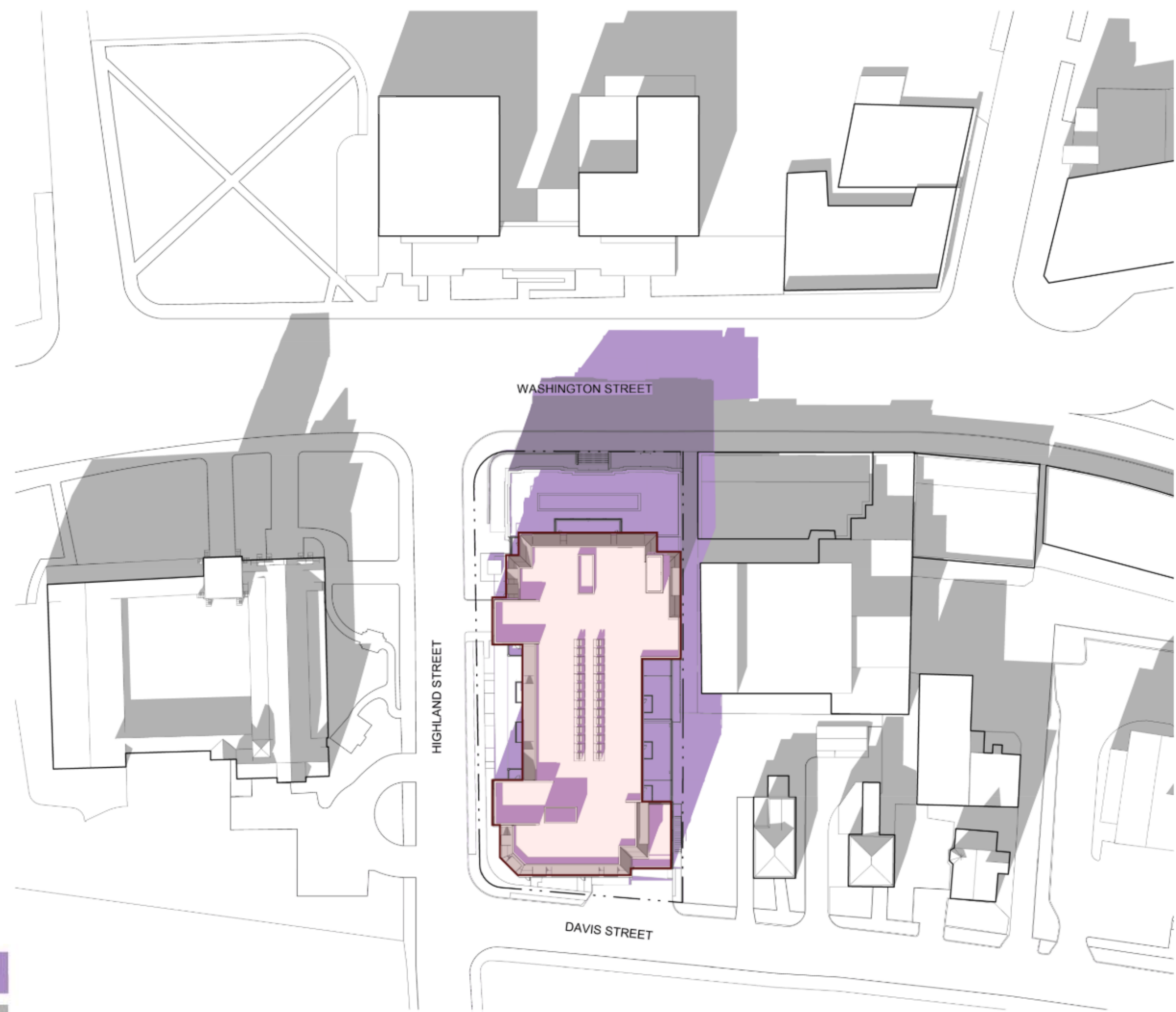
**SPECIAL PERMIT / ZONE
CHANGE PLANS**
NOT FOR
CONSTRUCTION
ISSUED: AUG 19, 2022

SHEET TITLE:
SHADOW STUDY -
DECEMBER 9AM

SHEET NO.:
A24

D

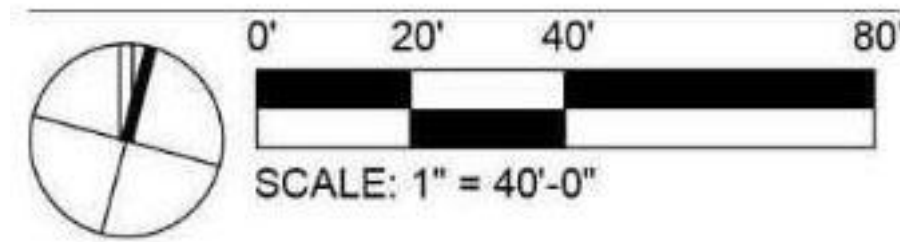
C



NEW SHADOW



EXISTING SHADOW



December 21st - 12pm 1
A25

1314 WASHINGTON STREET

WEST NEWTON, MA

OWNER
MARK DEVELOPMENT

MARK DEVELOPMENT
275 GROVE STREET, SUITE 2-150
NEWTON, MA 02466
617.614.9149

DESIGN ARCHITECT
DAVID M. SCHWARZ ARCHITECTS

DAVID M. SCHWARZ ARCHITECTS
1707 L STREET NW, SUITE 400
WASHINGTON, DC 20036
202.862.0777

CIVIL ENGINEER
BOHLER

BOHLER ENGINEERING
352 TURNPIKE ROAD
SOUTHBOROUGH, MA 01772
508.480.9900

LANDSCAPE ARCHITECT
HALVORSON
Tighe&Bond STUDIO

HALVORSON | TIGHE & BOND STUDIO
25 KINGSTON STREET
BOSTON, MA 02111-2200
617.536.0380

PROFESSIONAL SEAL



REVISIONS

#	DATE	DESCRIPTION

SPECIAL PERMIT / ZONE CHANGE PLANS

NOT FOR CONSTRUCTION
ISSUED: AUG 19, 2022

SHEET TITLE:
SHADOW STUDY - DECEMBER 12PM

SHEET NO.:
A25

**1314
WASHINGTON
STREET**
WEST NEWTON, MA

OWNER
**MARK
DEVELOPMENT**

MARK DEVELOPMENT
275 GROVE STREET, SUITE 2-150
NEWTON, MA 02466
617.614.9149

DESIGN ARCHITECT
**DAVID M.
SCHWARZ
ARCHITECTS**

DAVID M. SCHWARZ ARCHITECTS
1707 L STREET NW, SUITE 400
WASHINGTON, DC 20036
202.862.0777

CIVIL ENGINEER
BOHLER //

BOHLER ENGINEERING
352 TURNPIKE ROAD
SOUTHBOROUGH, MA 01772
508.480.9900

LANDSCAPE ARCHITECT
**HALVORSON
Tighe&Bond STUDIO**

HALVORSON | TIGHE & BOND STUDIO
25 KINGSTON STREET
BOSTON, MA 02111-2200
617.536.0380

PROFESSIONAL SEAL



REVISIONS

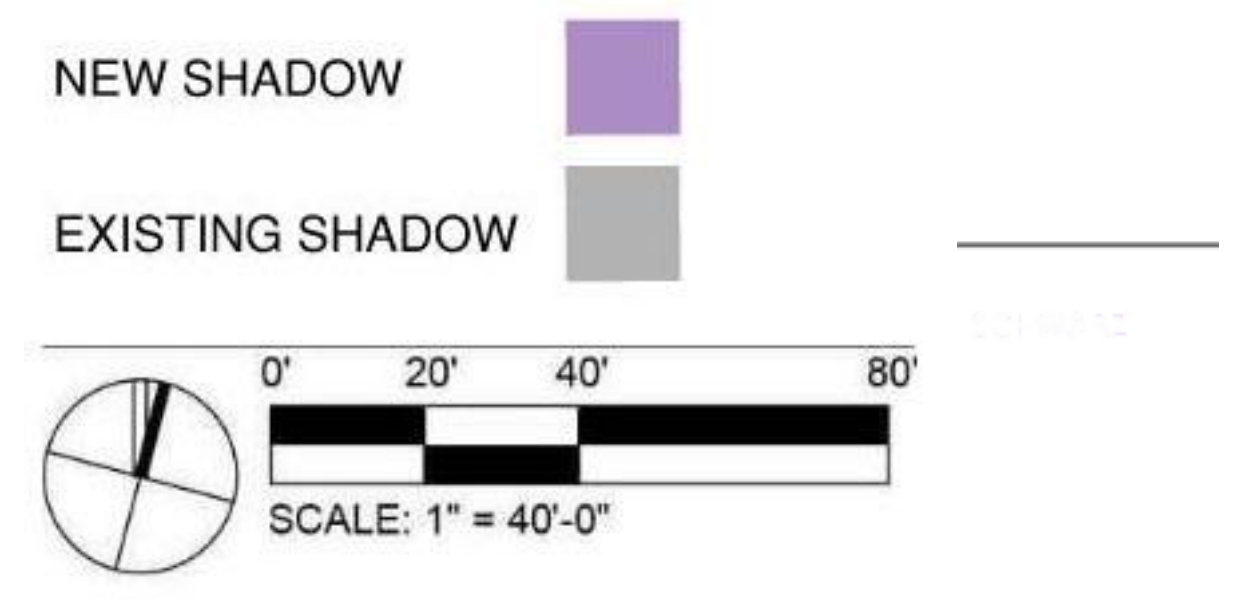
#	DATE	DESCRIPTION

**SPECIAL PERMIT / ZONE
CHANGE PLANS**

NOT FOR
CONSTRUCTION
ISSUED: AUG 19, 2022

SHEET TITLE:
SHADOW STUDY -
DECEMBER 3PM

SHEET NO.:
A26



December 21st - 3pm 1
A26