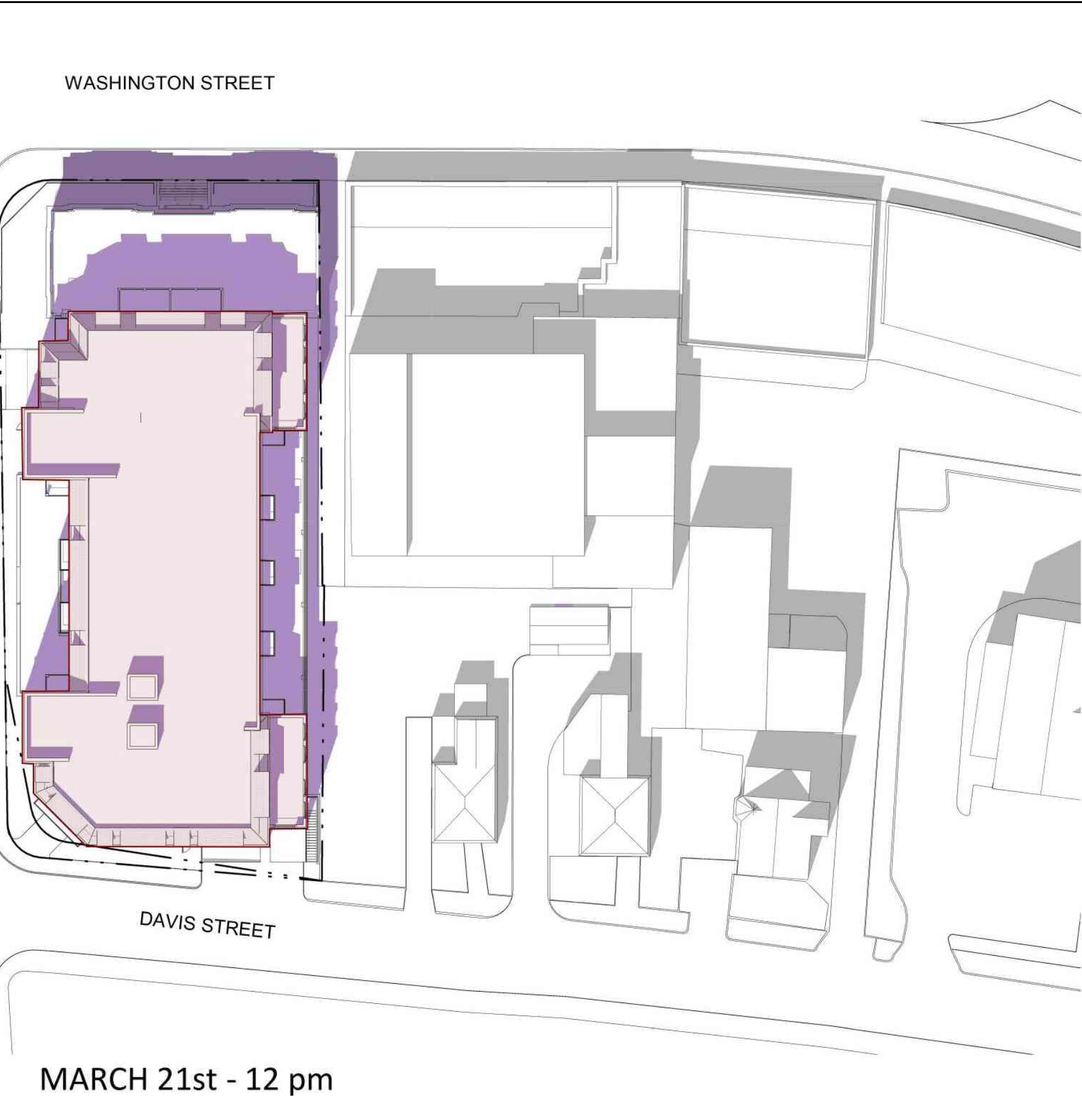
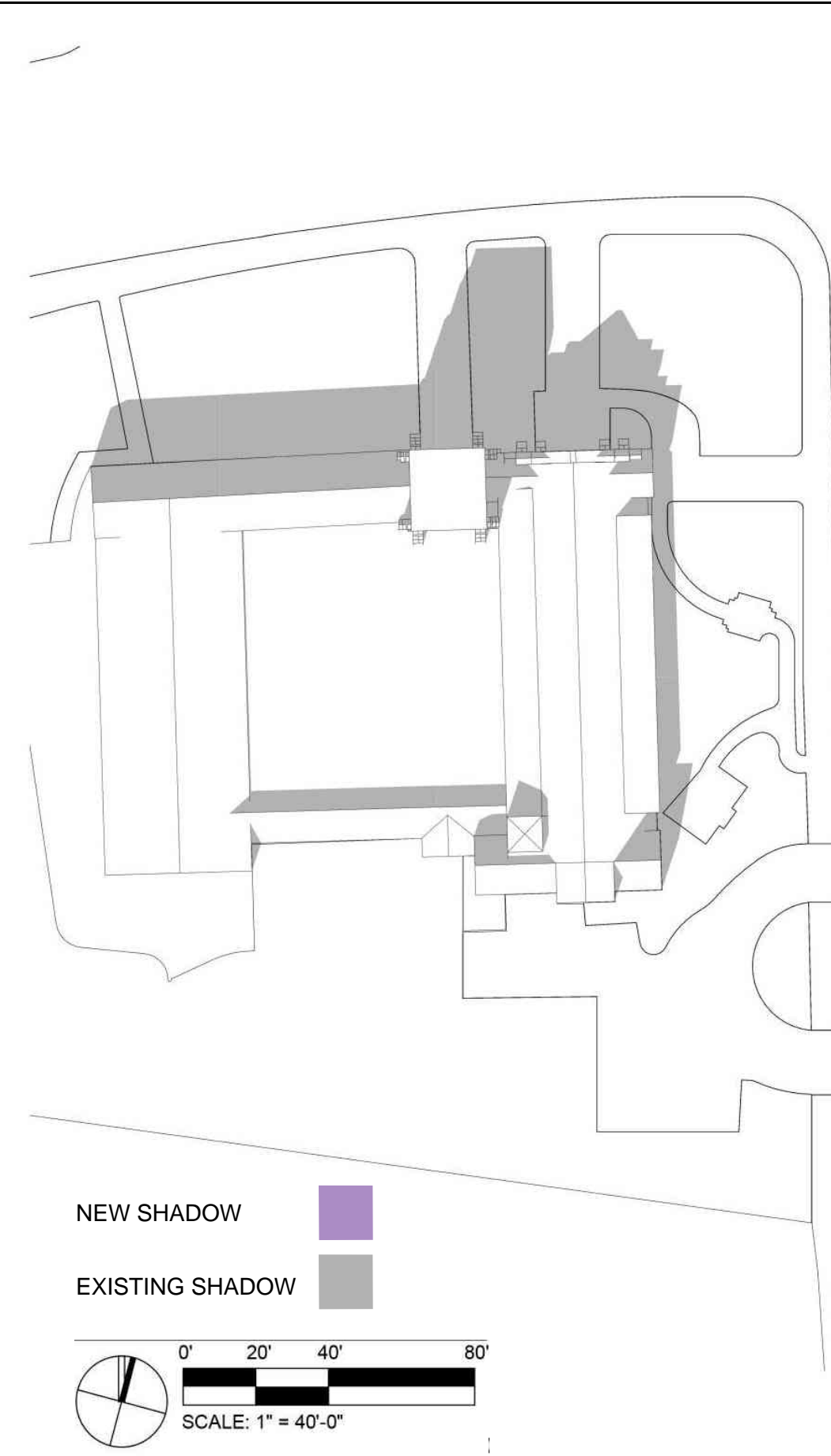
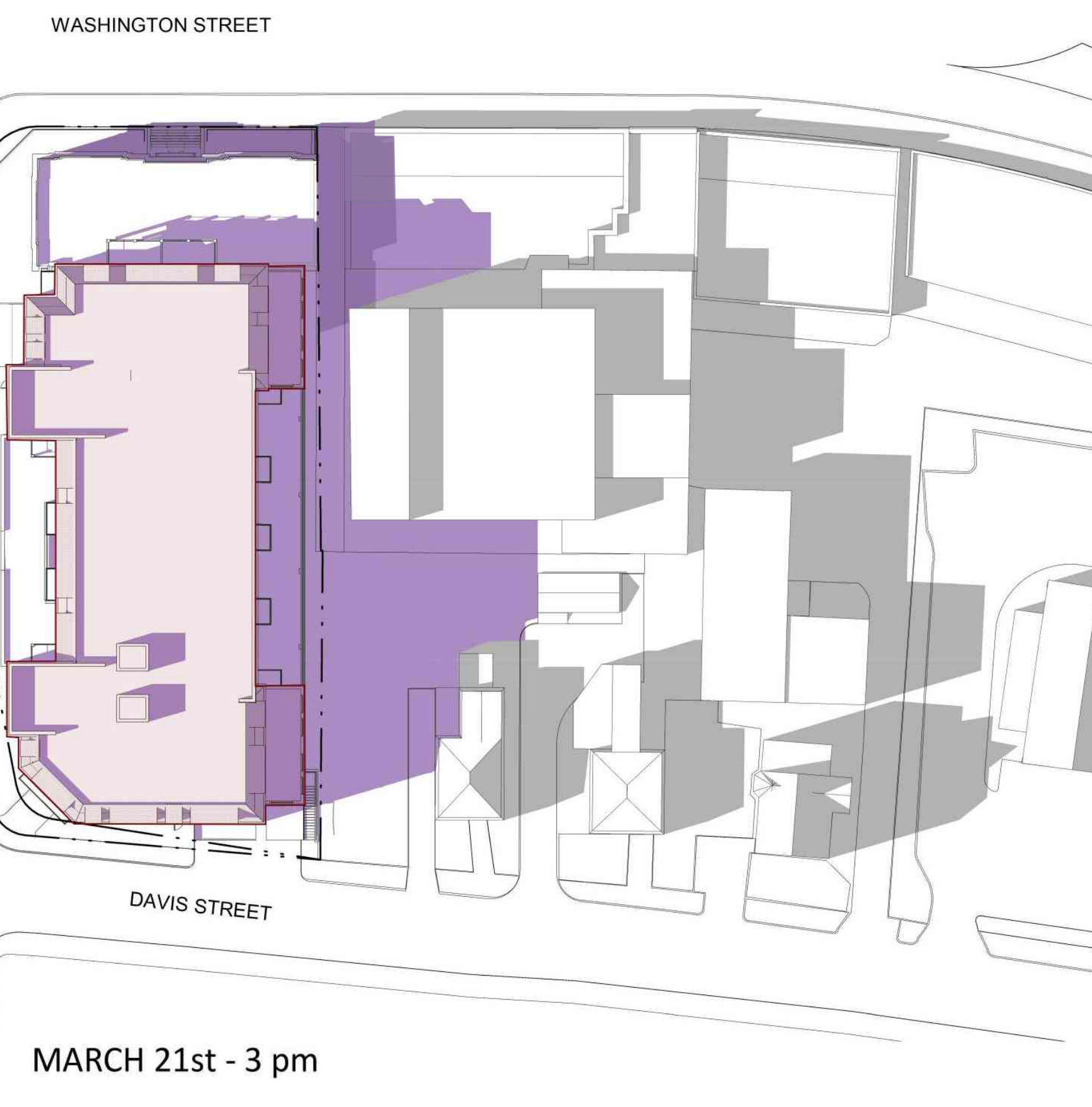
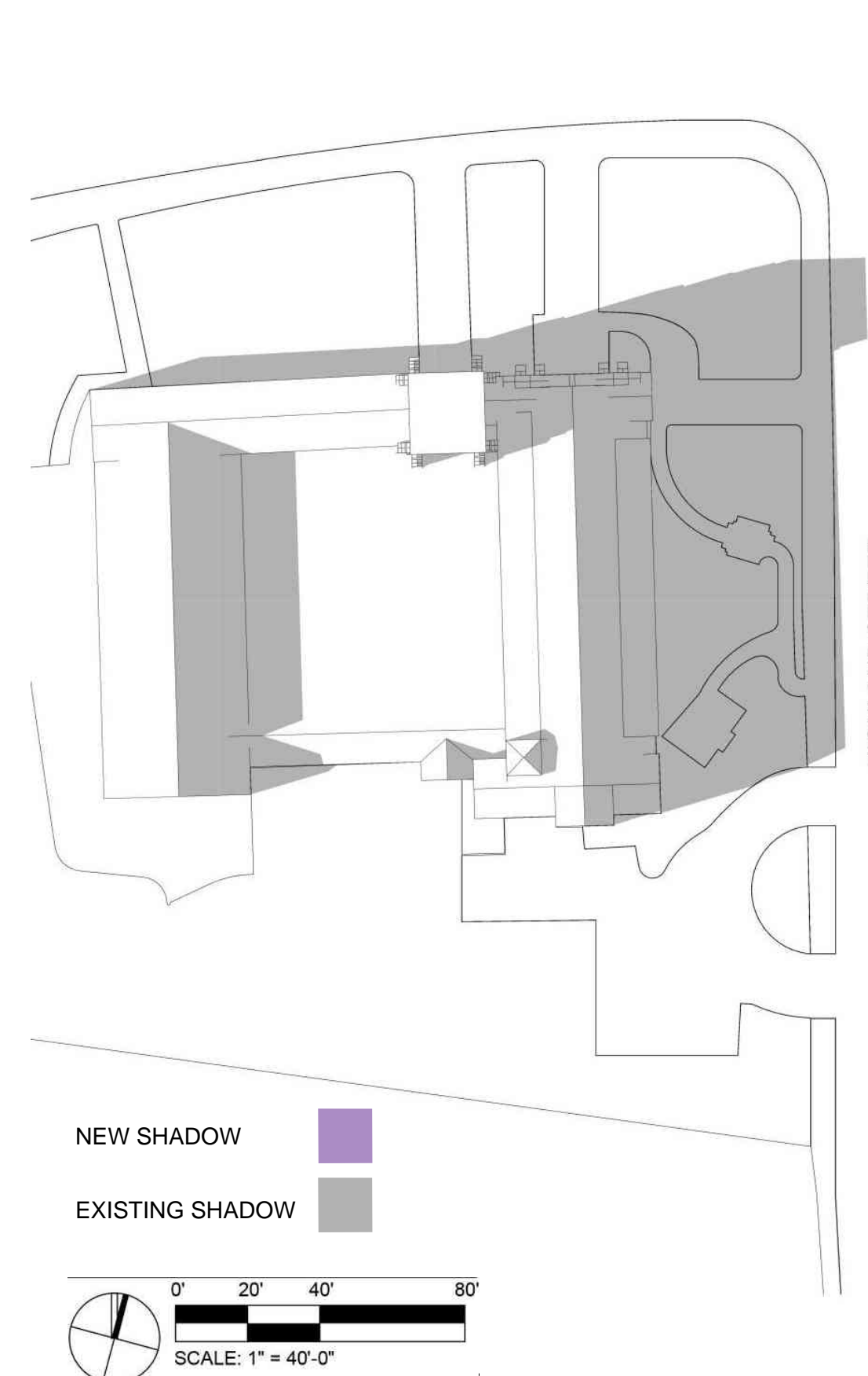




MARCH 21st - 9 am



MARCH 21st - 12 pm



MARCH 21st - 3 pm

**1314
WASHINGTON
STREET**

WEST NEWTON, MA

OWNER
**MARK
DEVELOPMENT**

MARK DEVELOPMENT
275 GROVE STREET, SUITE 2-150
NEWTON, MA 02466
617.614.9149

DESIGN ARCHITECT
**DAVID M.
SCHWARZ
ARCHITECTS**

DAVID M. SCHWARZ ARCHITECTS
1707 L STREET NW, SUITE 400
WASHINGTON, DC 20036
202.862.0777

CIVIL ENGINEER
BOHLER

BOHLER ENGINEERING
352 TURNPIKE ROAD
SOUTHBOROUGH, MA 01772
508.480.9900

LANDSCAPE ARCHITECT
HALVORSON
Tighe&Bond STUDIO

HALVORSON | TIGHE & BOND STUDIO
25 KINGSTON STREET
BOSTON, MA 02111-2200
617.536.0380

PROFESSIONAL SEAL



REVISIONS

#	DATE	DESCRIPTION

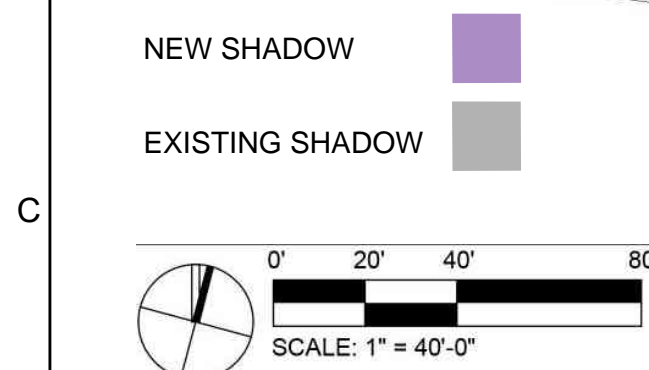
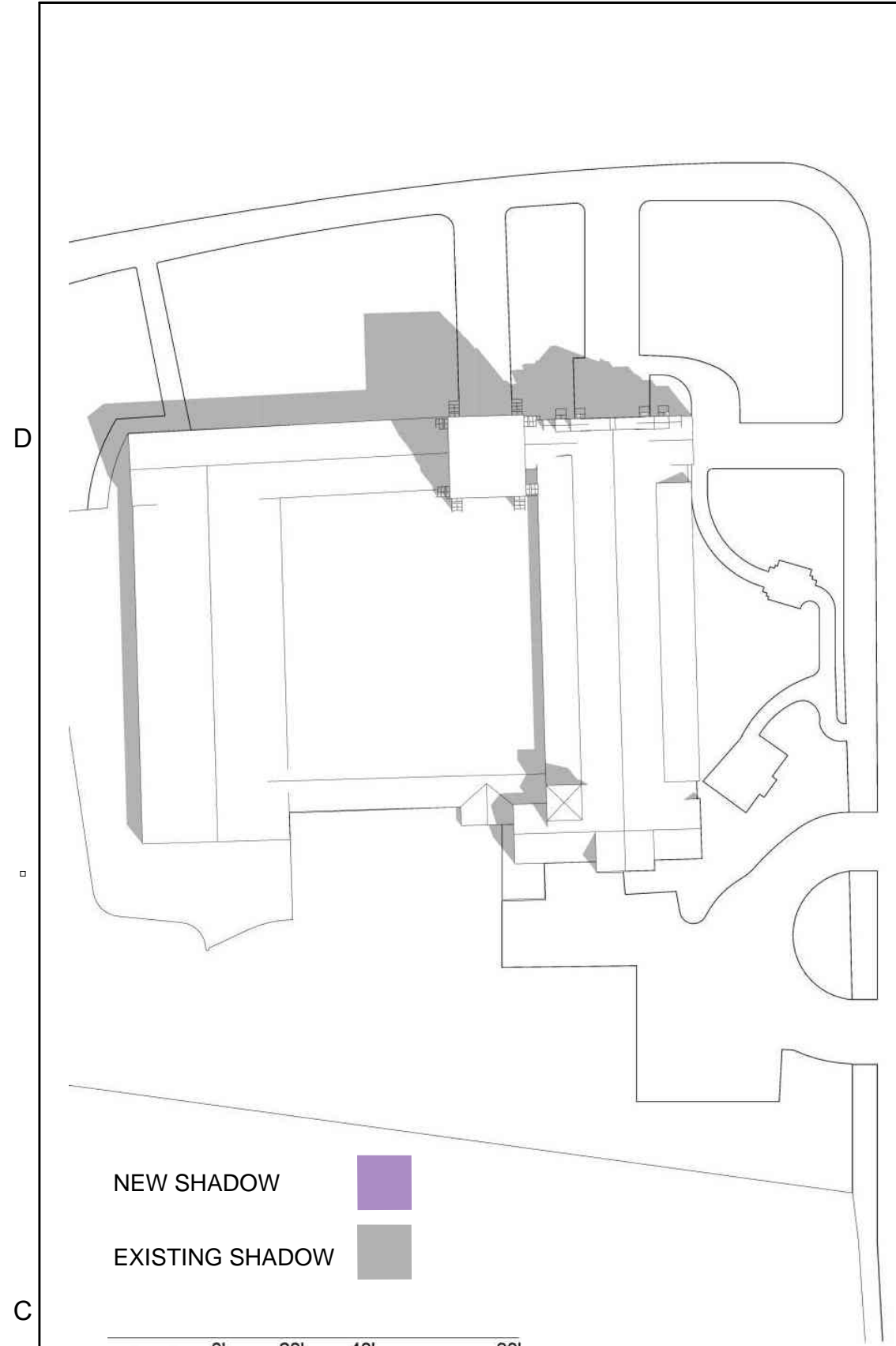
**SPECIAL PERMIT / ZONE
CHANGE PLANS**

NOT FOR
CONSTRUCTION
ISSUED: MAY 2, 2022

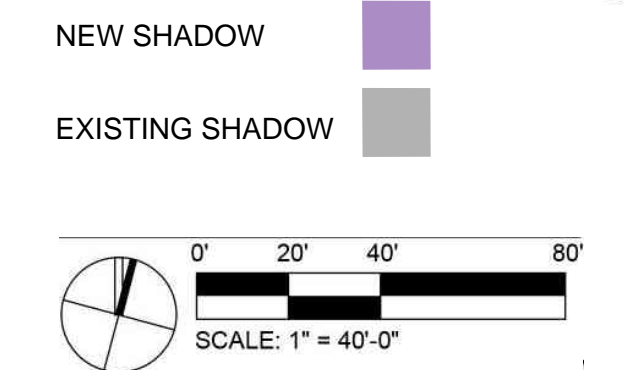
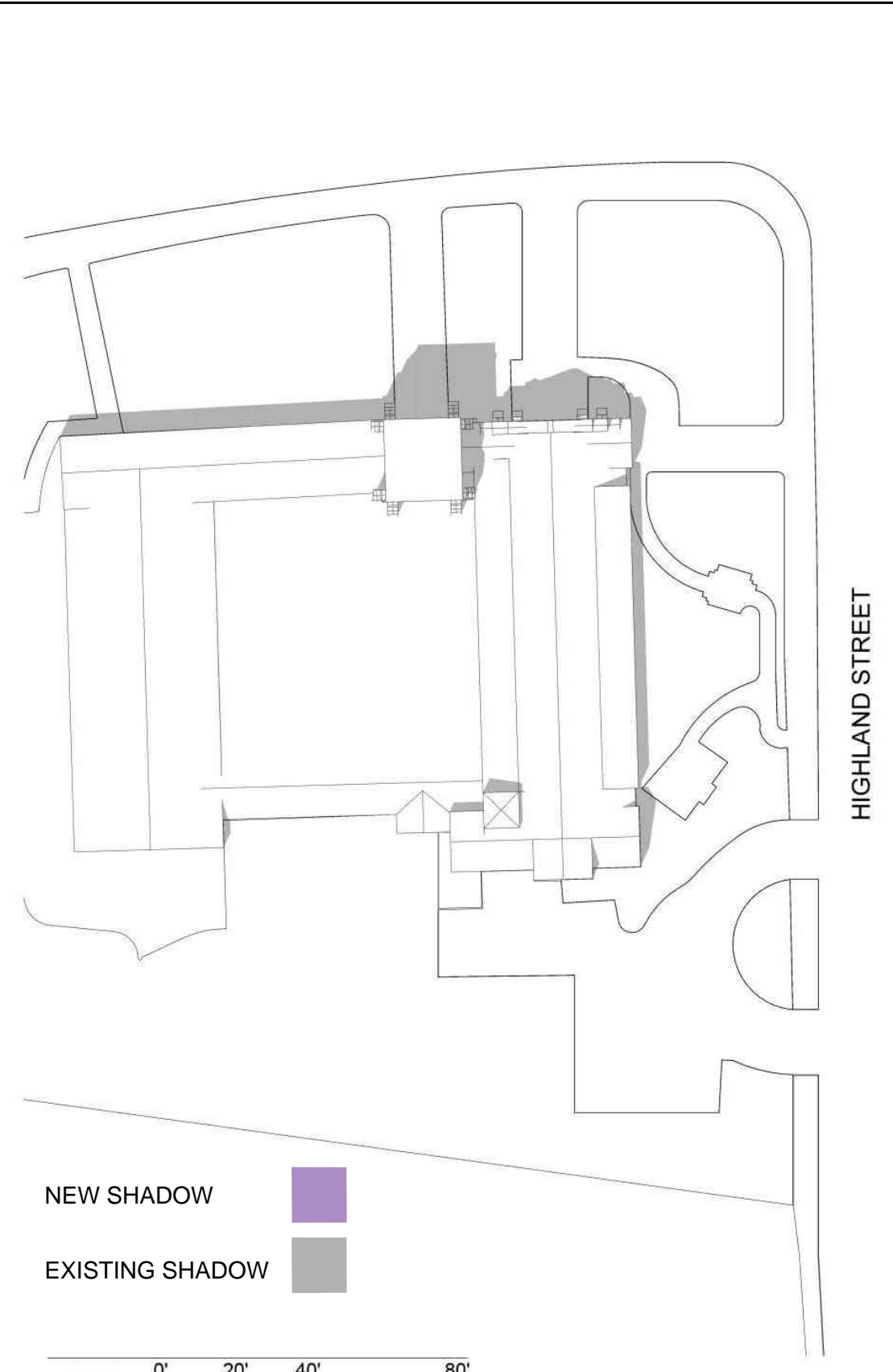
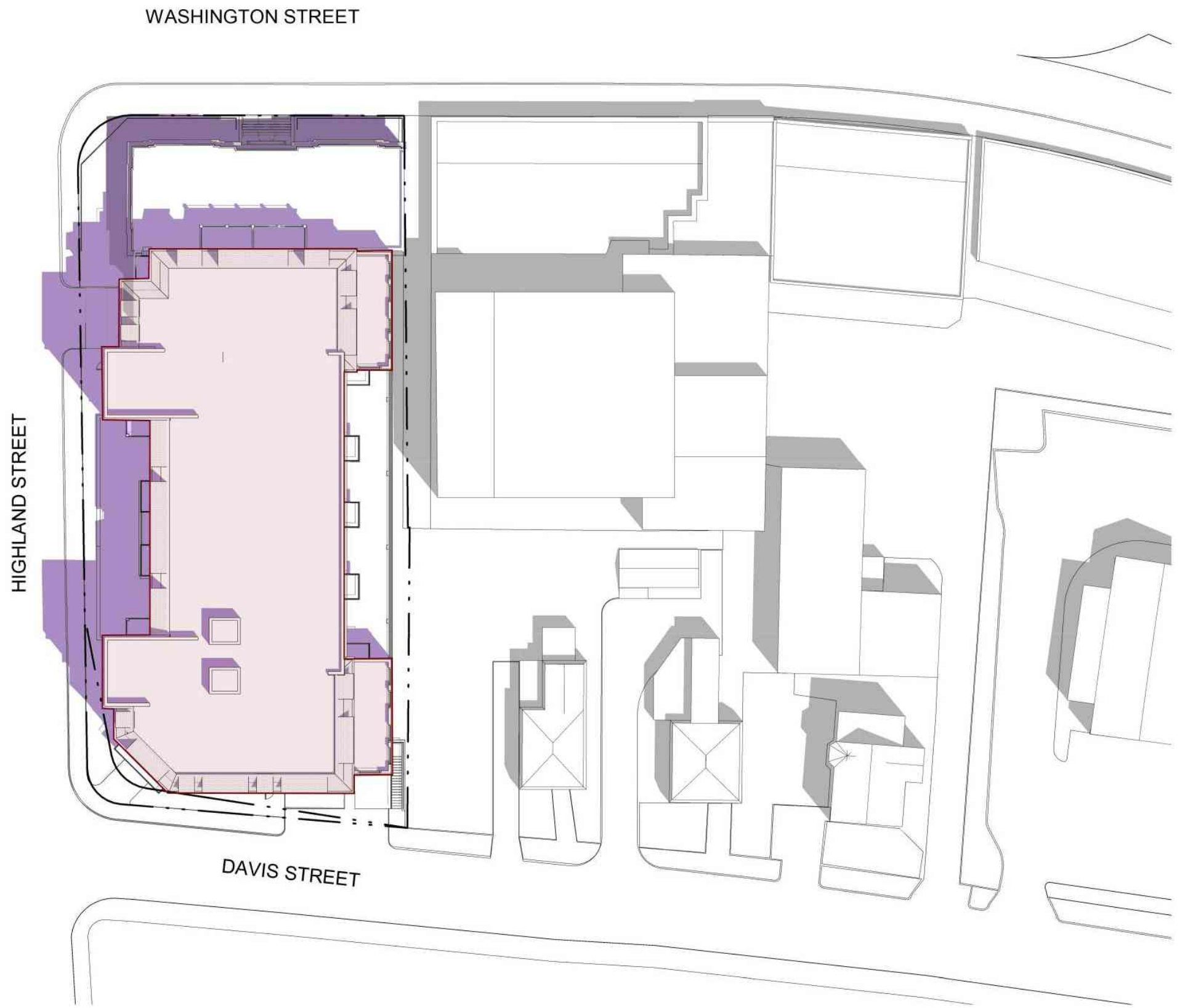
SHEET TITLE:
SHADOW STUDY -
MARCH

SHEET NO.:

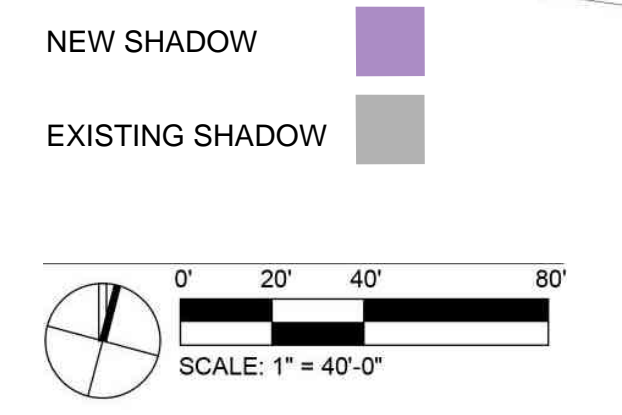
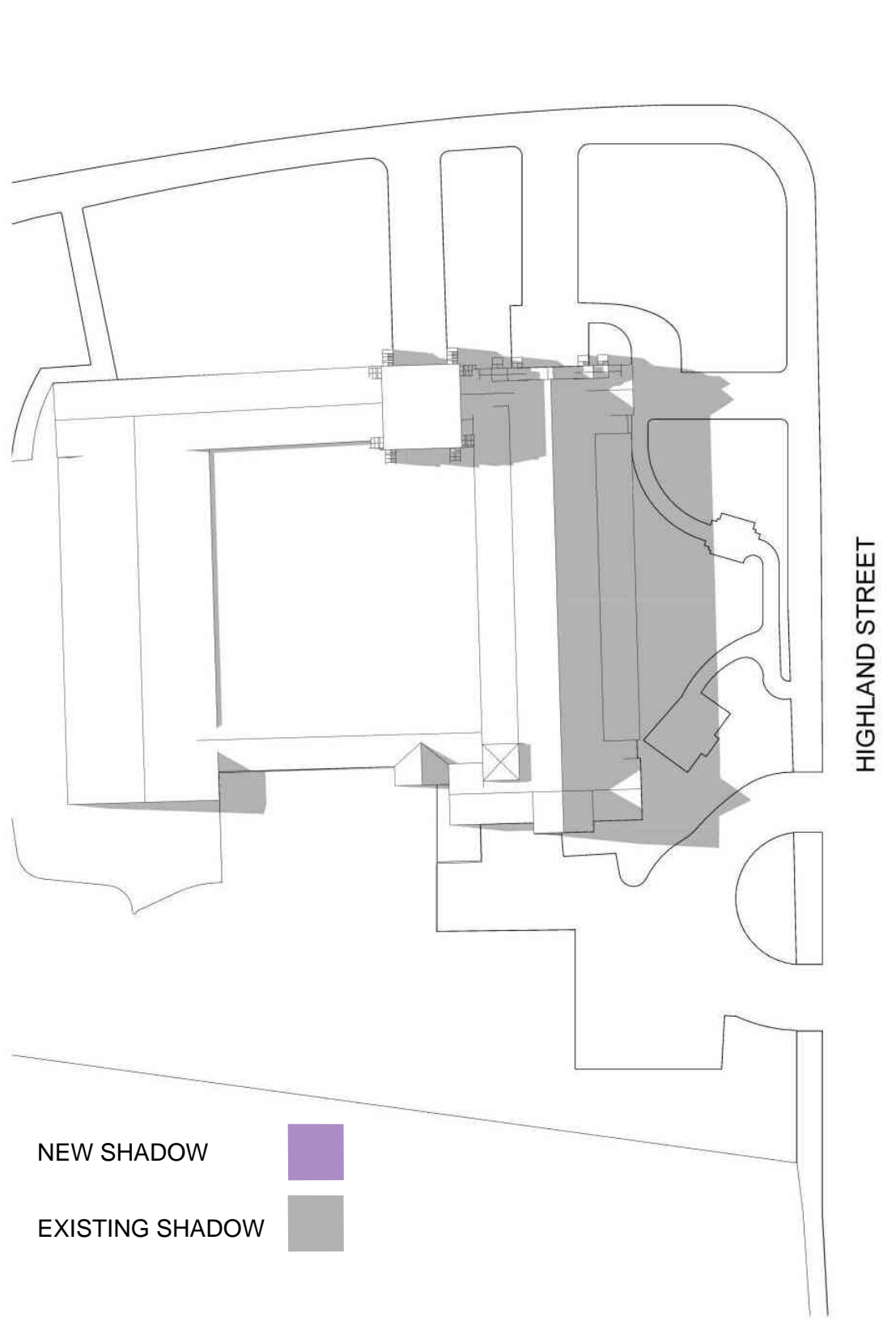
A12



JUNE 21st - 9 am



JUNE 21st - 12 pm



JUNE 21st - 3 pm

1314 WASHINGTON STREET
WEST NEWTON, MA

OWNER
MARK DEVELOPMENT

MARK DEVELOPMENT
275 GROVE STREET, SUITE 2-150
NEWTON, MA 02466
617.614.9149

DESIGN ARCHITECT
DAVID M. SCHWARZ ARCHITECTS

DAVID M. SCHWARZ ARCHITECTS
1707 L STREET NW, SUITE 400
WASHINGTON, DC 20036
202.862.0777

CIVIL ENGINEER
BOHLER

BOHLER ENGINEERING
352 TURNPIKE ROAD
SOUTHBOROUGH, MA 01772
508.480.9900

LANDSCAPE ARCHITECT
HALVORSON
Tighe & Bond Studio

HALVORSON | TIGHE & BOND STUDIO
25 KINGSTON STREET
BOSTON, MA 02111-2200
617.536.0380

PROFESSIONAL SEAL



REVISIONS

#	DATE	DESCRIPTION

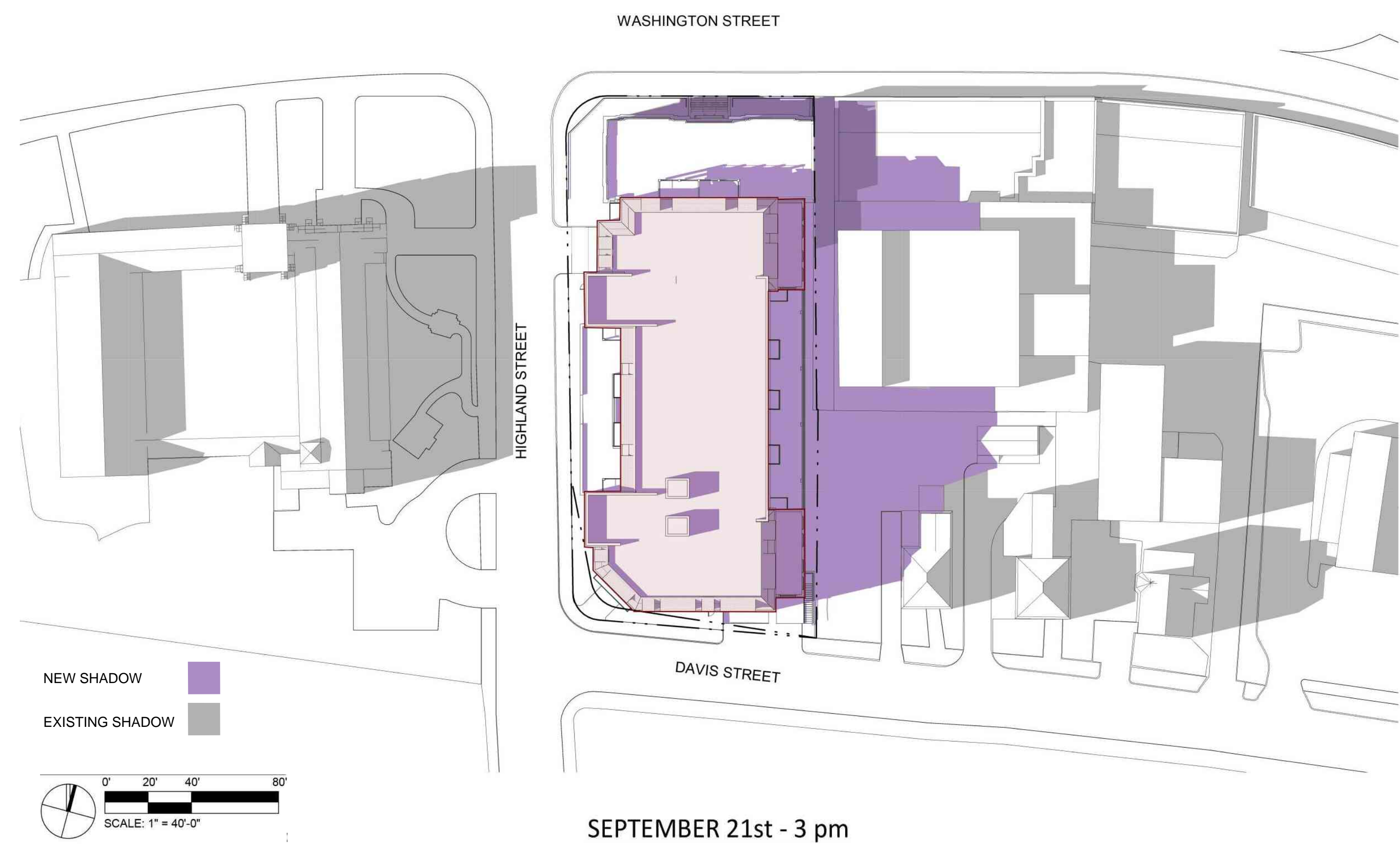
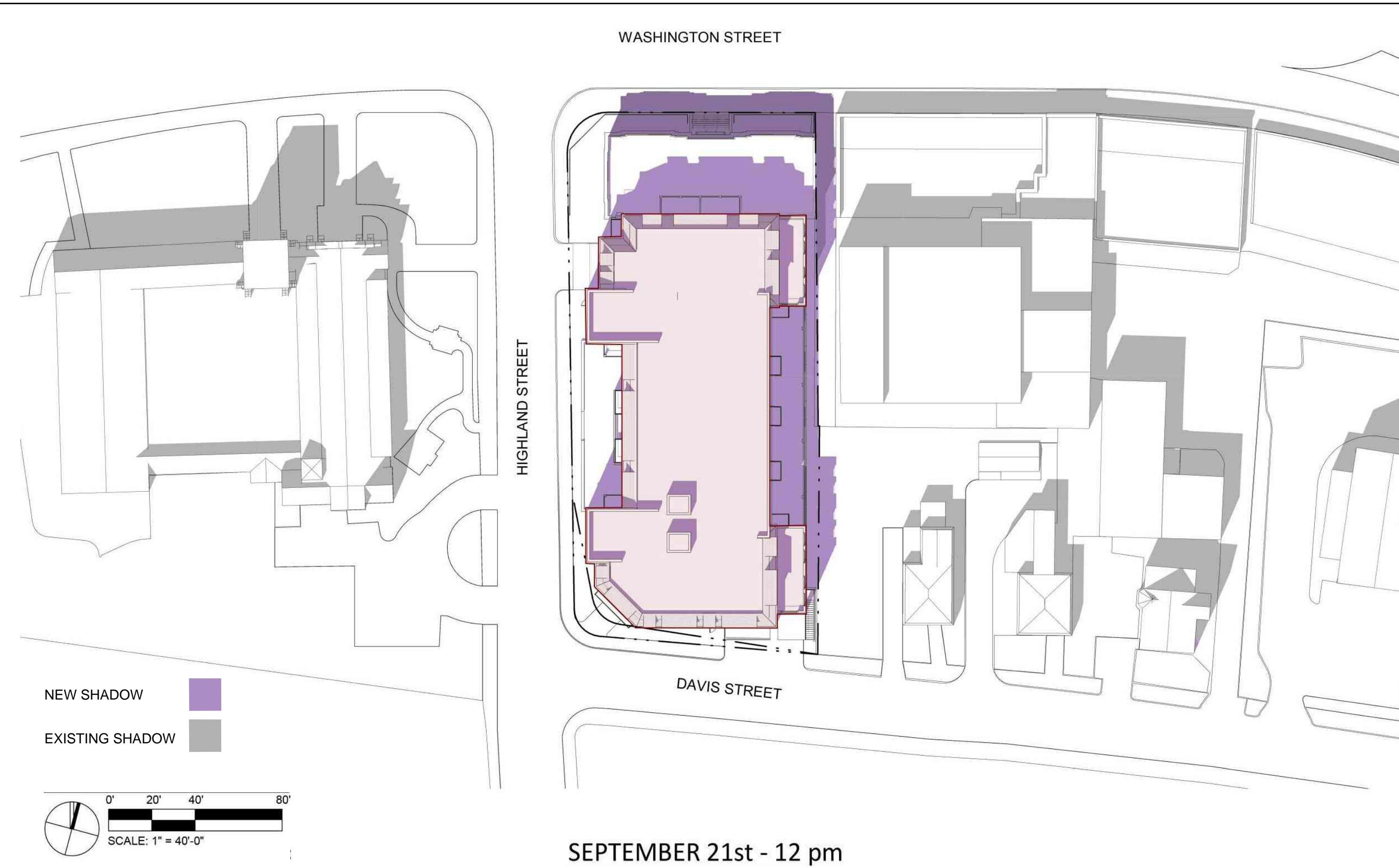
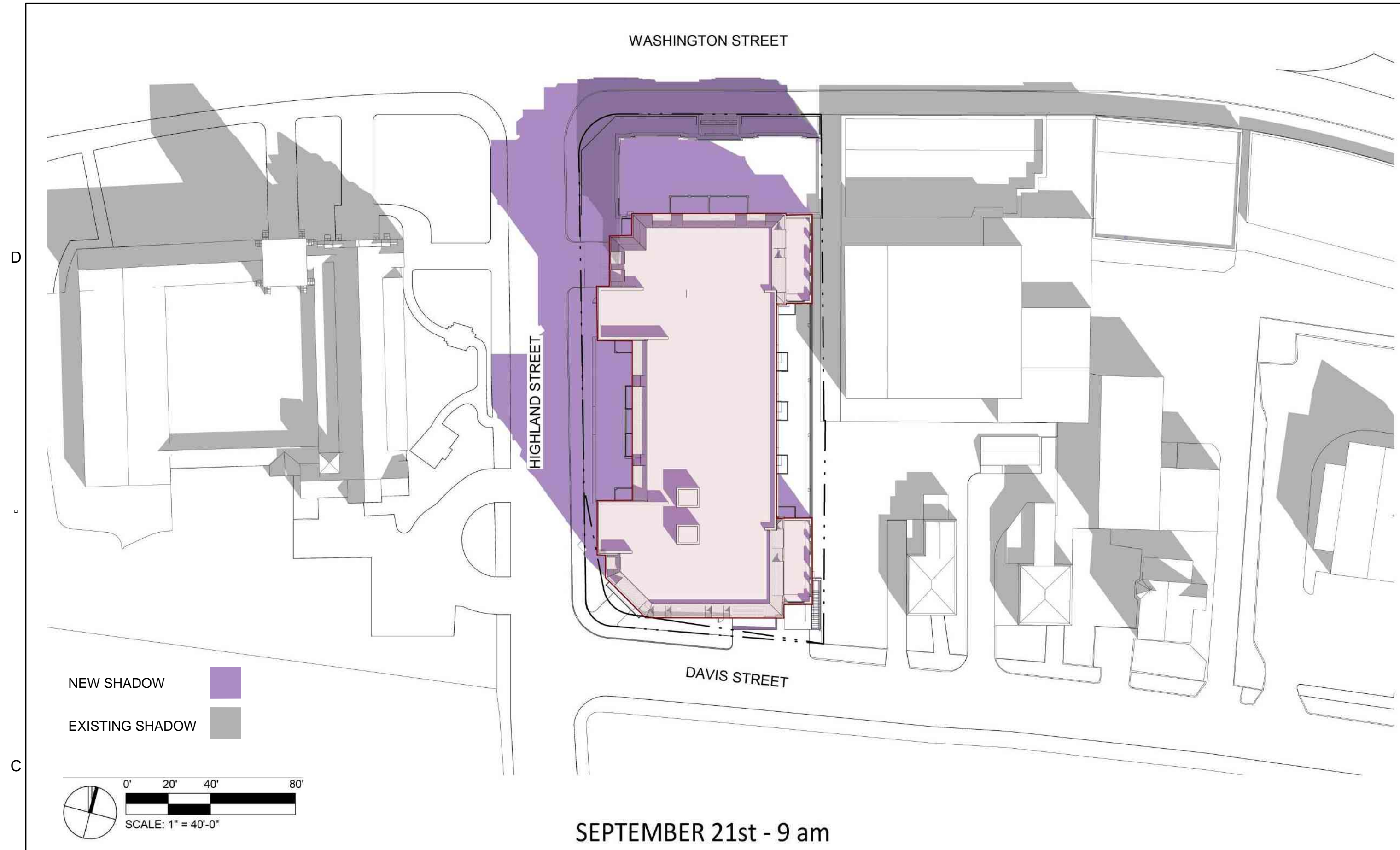
SPECIAL PERMIT / ZONE CHANGE PLANS

NOT FOR CONSTRUCTION
ISSUED: MAY 2, 2022

SHEET TITLE:
SHADOW STUDY - JUNE

SHEET NO.:

A13



1314 WASHINGTON STREET
WEST NEWTON, MA

OWNER
MARK DEVELOPMENT

MARK DEVELOPMENT
275 GROVE STREET, SUITE 2-150
NEWTON, MA 02466
617.614.9149

DESIGN ARCHITECT
DAVID M. SCHWARZ ARCHITECTS

DAVID M. SCHWARZ ARCHITECTS
1707 L STREET NW, SUITE 400
WASHINGTON, DC 20036
202.862.0777

CIVIL ENGINEER
BOHLER

BOHLER ENGINEERING
352 TURNPIKE ROAD
SOUTHBOROUGH, MA 01772
508.480.9900

LANDSCAPE ARCHITECT
HALVORSON
Tighe & Bond STUDIO

HALVORSON | TIGHE & BOND STUDIO
25 KINGSTON STREET
BOSTON, MA 02111-2200
617.536.0380

PROFESSIONAL SEAL



REVISIONS

#	DATE	DESCRIPTION

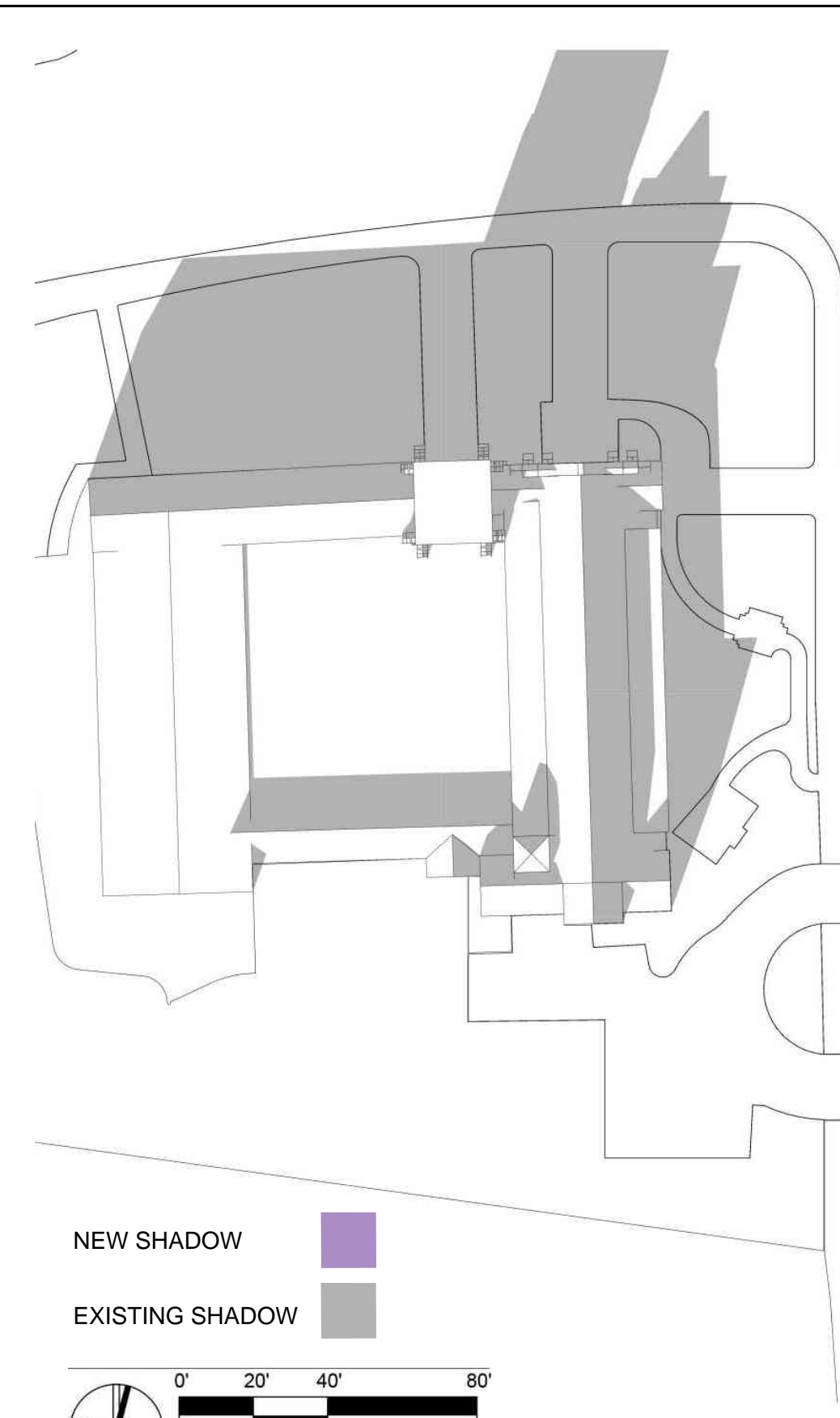
SPECIAL PERMIT / ZONE CHANGE PLANS
NOT FOR CONSTRUCTION
ISSUED: MAY 2, 2022

SHEET TITLE:
SHADOW STUDY - SEPTEMBER

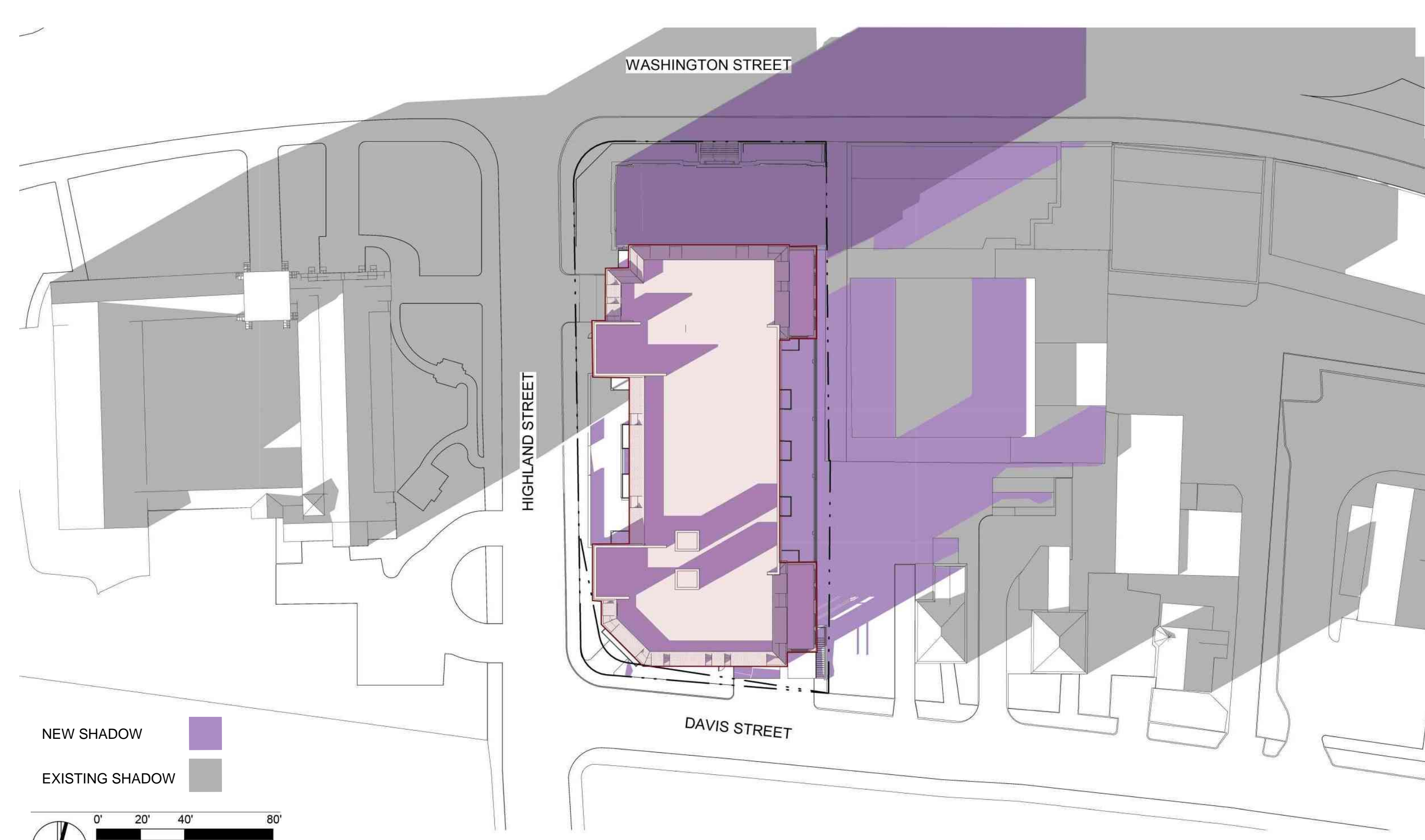
SHEET NO.:
A14



DECEMBER 21st - 9 am



DECEMBER 21st - 12 pm



DECEMBER 21st - 3 pm

**1314
WASHINGTON
STREET**
WEST NEWTON, MA

OWNER
**MARK
DEVELOPMENT**

MARK DEVELOPMENT
275 GROVE STREET, SUITE 2-150
NEWTON, MA 02466
617.614.9149

DESIGN ARCHITECT
**DAVID M.
SCHWARZ
ARCHITECTS**

DAVID M. SCHWARZ ARCHITECTS
1707 L STREET NW, SUITE 400
WASHINGTON, DC 20036
202.862.0777

CIVIL ENGINEER
BOHLER

BOHLER ENGINEERING
352 TURNPIKE ROAD
SOUTHBOROUGH, MA 01772
508.480.9900

LANDSCAPE ARCHITECT
HALVORSON
Tighe&Bond STUDIO

HALVORSON | TIGHE & BOND STUDIO
25 KINGSTON STREET
BOSTON, MA 02111-2200
617.536.0380

PROFESSIONAL SEAL



REVISIONS

#	DATE	DESCRIPTION

**SPECIAL PERMIT / ZONE
CHANGE PLANS**

NOT FOR
CONSTRUCTION
ISSUED: MAY 2, 2022

SHEET TITLE:
SHADOW STUDY -
DECEMBER

SHEET NO.:

A15