

NATIVE PLANT COMMUNITIES
 WHOLE SITE | Native, wildlife friendly plantings & practices with a range of trees, shrubs, perennials and groundcovers, helps support biodiversity in the neighborhood



London Plane Tree



Irregular Bluestone Paving



Kalmia



Rhus



Hydrangea Snow Queen



Parthenocissus



Amsonia



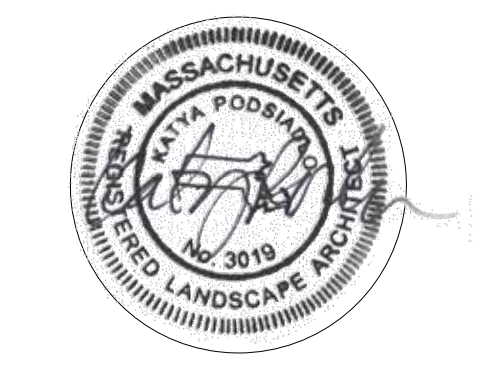
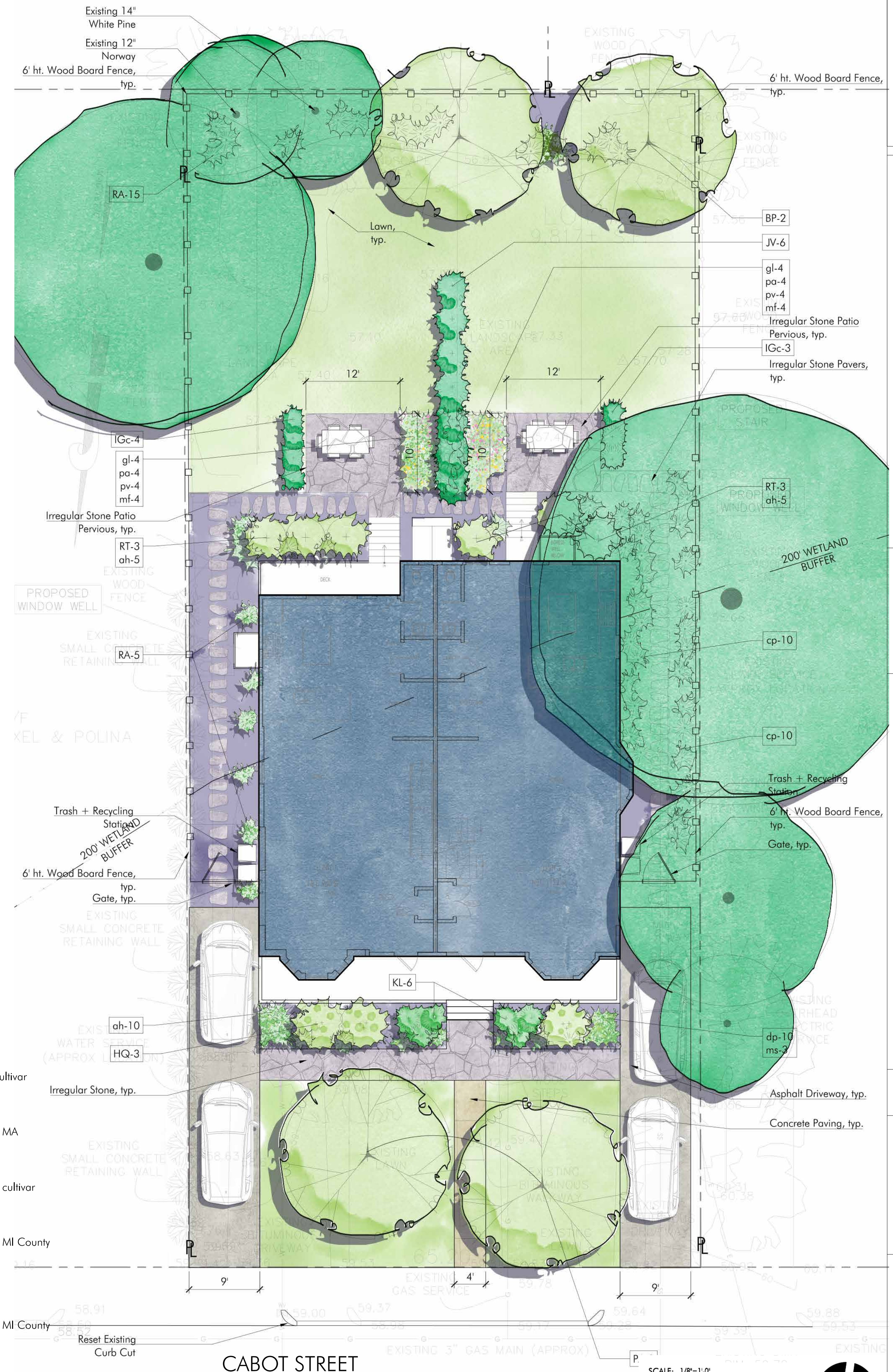
Aster



Hay-scented Fern

336 CABOT STREET NEWTON PROBABLE PLANT LIST

SYM #	LATIN NAME	COMMON NAME	SIZE	NOTES	OTHER
TREES: Mulch All Beds					
BP 2	<i>Betula papyrifera</i>	Paper Birch	2.5-3" cal.	B&B	
PA 2	<i>Platanus acerifolia</i> 'Bloodgood'	Bloodgood Planetree	2.5-3" cal.	B+B	Native cultivar
SHRUBS: Mulch All Beds					
HQ 3	<i>Hydrangea quercifolia</i> 'Snow Queen'	Snow Queen Oakleaf Hydrangea	5 gal.		
IGc 7	<i>Ilex glabra</i> 'Compacta'	Compact Inkberry	5 gal.		
JV 7	<i>Juniperus virginiana</i> 'Taylor'	Taylor Eastern Red Cedar	10-12'	B+B	Native MA
KL 6	<i>Kalmia latifolia</i> 'nimpuck'	Elf Mountain Laurel	#3	Pots	Native
RA 15	<i>Rhus aromatica</i> Grow-Low	Gro-Low Sumac	#2	Pots	Native
RT 6	<i>Rhus typhina</i> 'Tiger Eyes'	Cutleaf Staghorn Sumac	3 gal.	Pots	Native cultivar
PERENNIALS: Mulch All Beds					
ac 10	<i>Aster cordifolius</i>	Blue Wood Aster	2 gal.		Native MI County
ah 10	<i>Amsonia hubrichtii</i>	Bluestar	2 gal.	space 24" o.c.	
cp 20	<i>Carex pennsylvanica</i>	Pennsylvania sedge	#1 pot		Native
dp 10	<i>Dennstaedtia punctilobula</i>	Hay-scented Fern	24" o.c.	Part/Shade	Native
gl 8	<i>Gaura lindheimeri</i> Whirling Butterflies'	Whirling Butterflies Beeblossom	1 gal.		Native
ms 3	<i>Matteuccia struthiopteris</i>	Ostrich Fern	2 gal.		Native
mf 8	<i>Monarda fistulosa</i>	Beebalm	2 gal.		Native MI County
pv 8	<i>Panicum virgatum</i> 'Northwind'	Northwind Switchgrass	2 gal.		Native
pa 8	<i>Pennisetum alopecuroides</i> 'Foxtrot'	Foxtrot Fountaingrass	1 gal.	36" o.c.	



336 CABOT STREET
 NEWTON, MA
 LANDSCAPE PLAN

Project #: _____ Date: 4/28/22
 Drawn by: _____ Reviewed: KP
 Scale: 1" = 10'-0"

Revisions:

