


**Dig Safe**  
 •Excavators  
 Before you dig contact the Dig Safe Center. To prevent damage to telephone, gas or electric underground facilities of member utilities, call toll free  
 Massachusetts state law requires notification at least three business days before you start digging operations. In an emergency, call immediately.

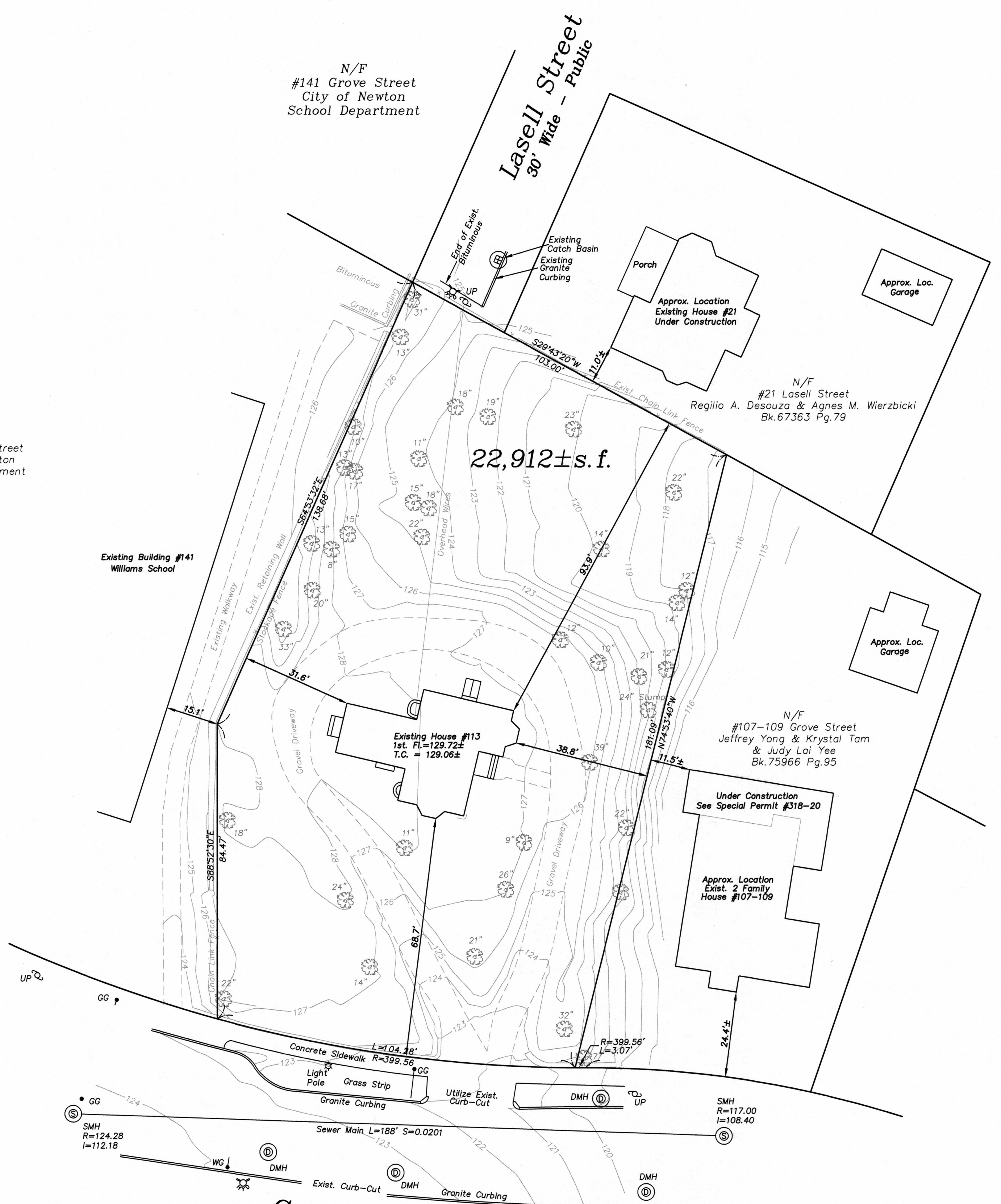



N/F  
 #141 Grove Street  
 City of Newton  
 School Department

Existing Building #141  
 Williams School

N/F  
 #141 Grove Street  
 City of Newton  
 School Department

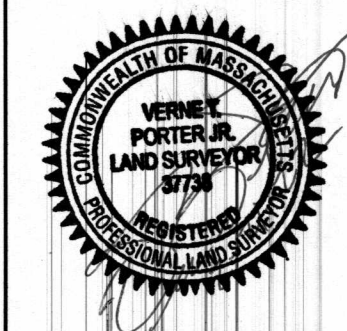
**Lasell Street**  
 30' Wide - Public



**Grove Street**  
 Variable Width - Public

NOTES  
 GRADES SHOWN ARE ON AN THE CITY OF NEWTON ELEVATION BASE  
 UTILITIES SHOWN WERE TAKEN FROM ACTUAL FIELD LOCATIONS, TOWN PLANS, DIG SAFE MARKINGS AND CONTRACTORS NOTES, MAY OR MAY NOT BE COMPLETE OR CORRECT, FIELD VERIFY ALL LOCATIONS AND DEPTHS PRIOR TO ANY EXCAVATION.

REVISIONS	
DATE	DESCRIPTION



**~Existing Conditions Site Plan~**

113 Grove Street  
 Newton, Massachusetts  
 Scale: 1"=20' February 21, 2022  
**VERNE T. PORTER Jr, PLS**  
 Land Surveyors - Civil Engineers  
 354 Elliot Street, Newton, Ma. 02464

Job #21043  
 Design By:GNB  
 Checked By:VTP  
 Drawn By:GNB

0 20 40 60 80  
 Sheet 1 of 1