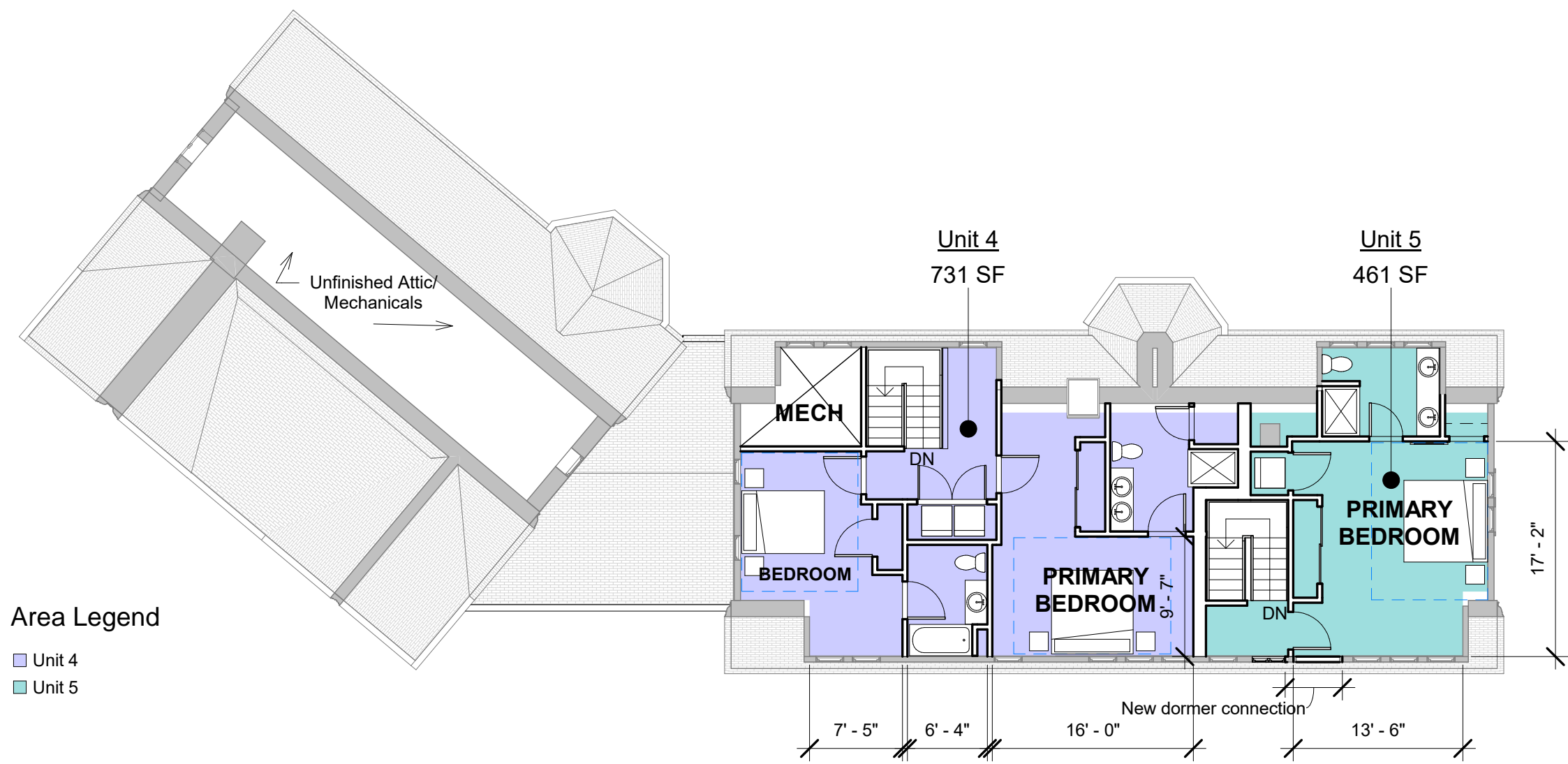
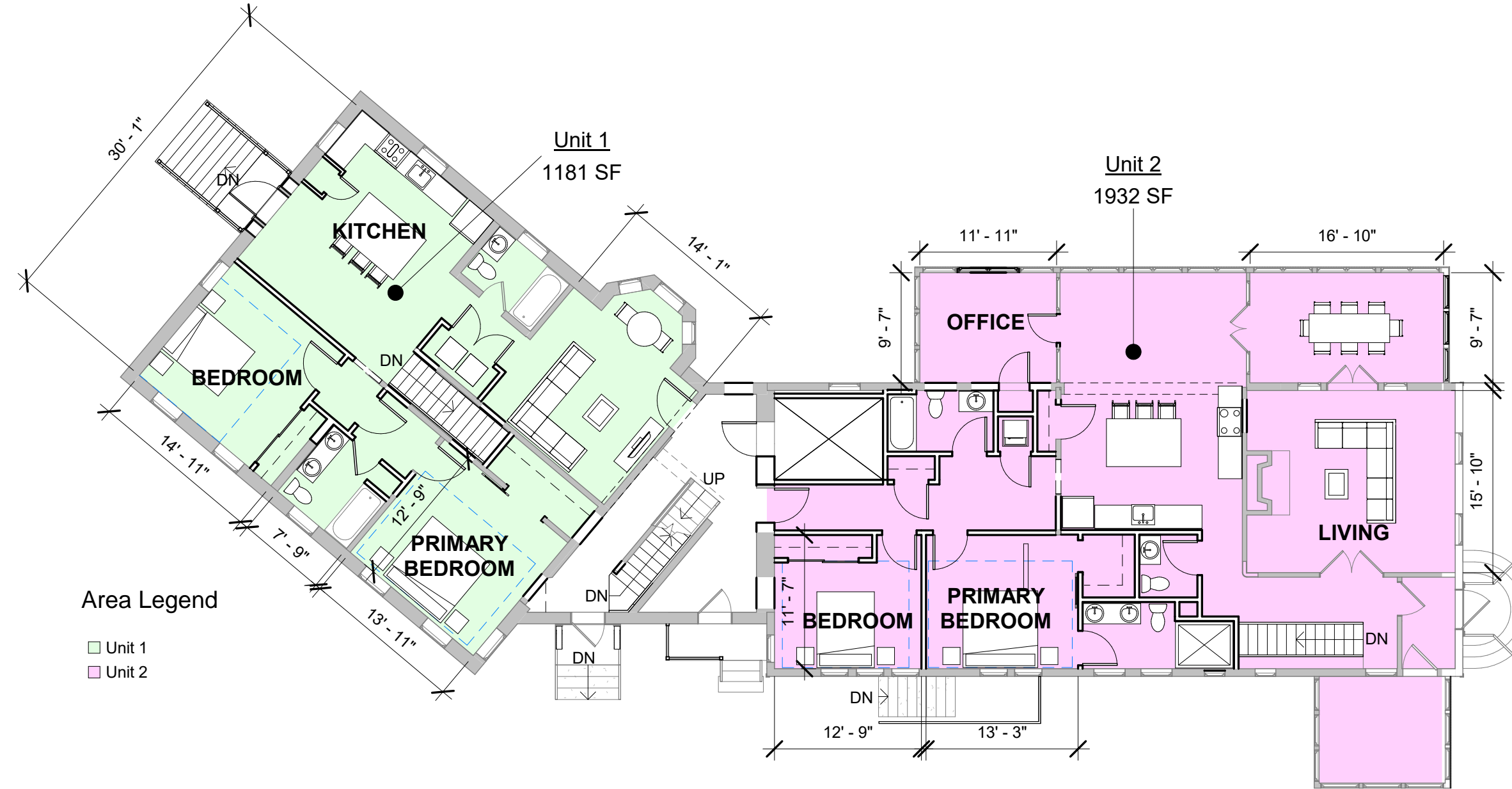


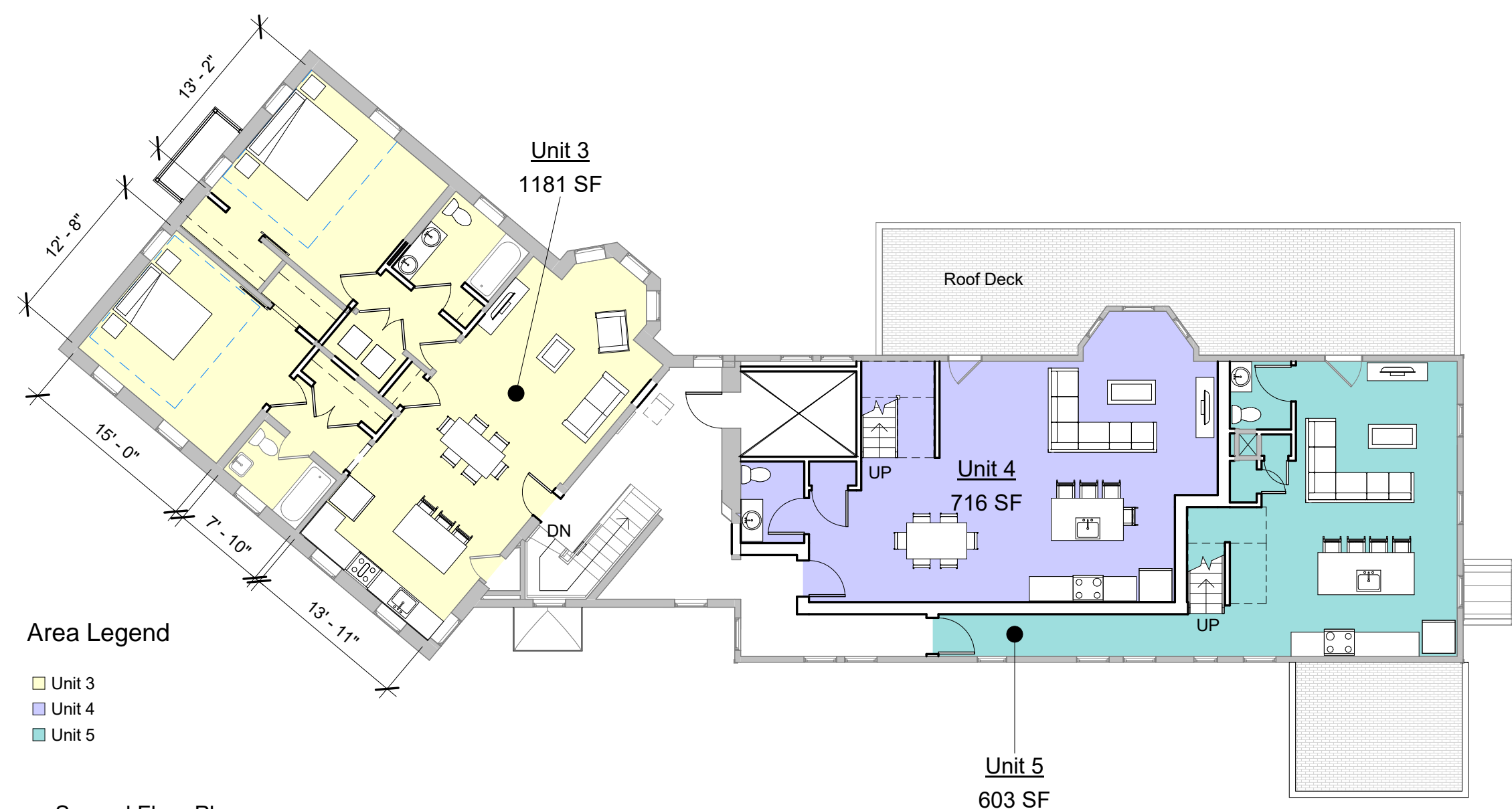
Unit Area Total		
Name	Area Total	Comments
Unit 1	2311 SF	2-Bedroom
Unit 2	3163 SF	3-Bedroom
Unit 3	1181 SF	2-Bedroom
Unit 4	1448 SF	2-Bedroom
Unit 5	1064 SF	1-Bedroom
Grand total	9166 SF	



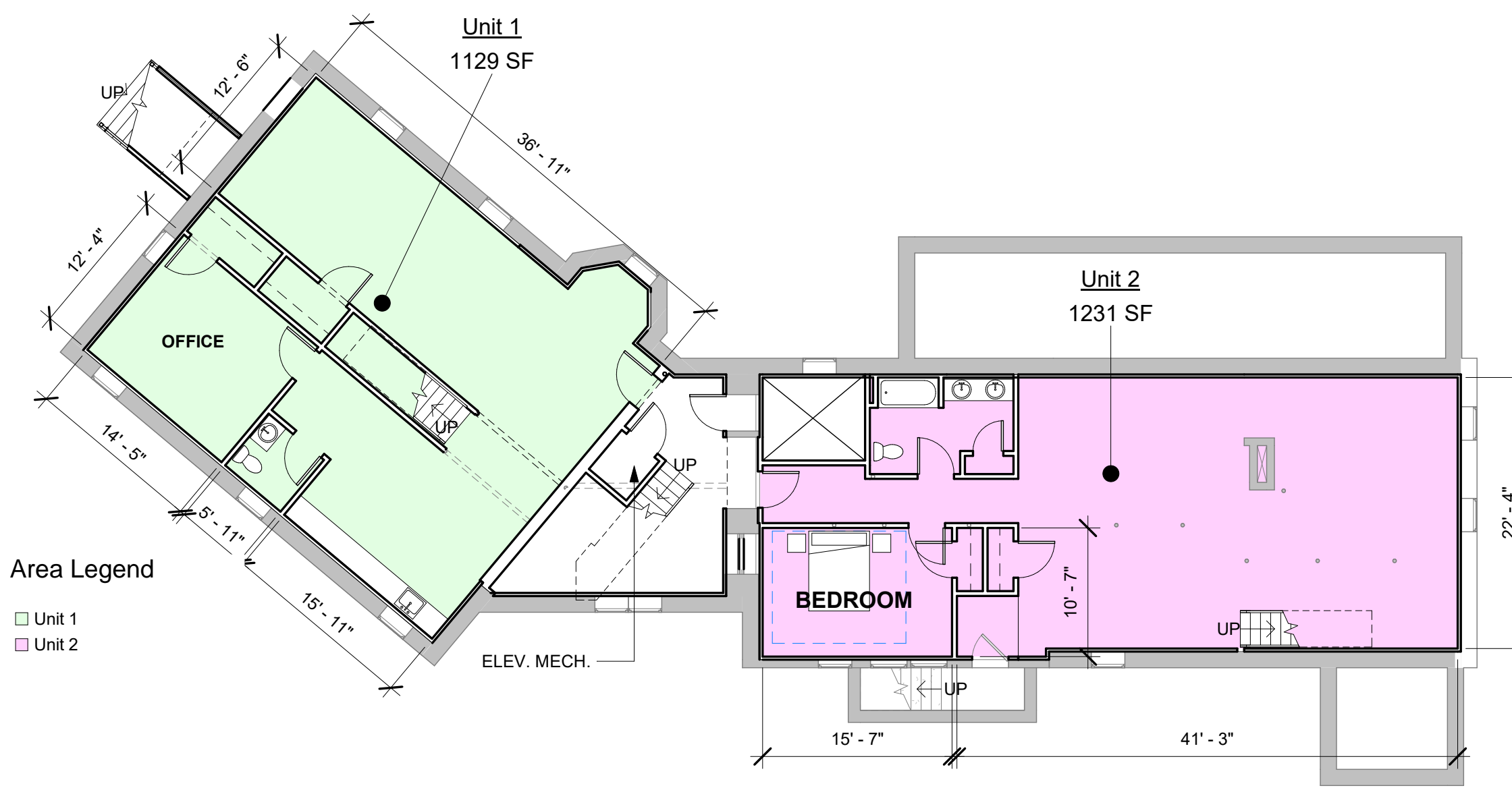
④ Third Floor Plan
3/32" = 1'-0"



② First Floor Plan
3/32" = 1'-0"



③ Second Floor Plan
3/32" = 1'-0"



① Basement Plan
3/32" = 1'-0"

ARCHITECT'S STAMP:

THE ARCHITECT CERTIFIES THAT THIS PROJECT HAS BEEN DESIGNED BY ME, OR UNDER MY SUPERVISION, IN ACCORDANCE WITH APPLICABLE FEDERAL, STATE, LOCAL LAWS, CODES, AND REGULATIONS. TO THE BEST OF MY KNOWLEDGE AND BELIEF THESE CONSTRUCTION DOCUMENTS ARE IN CONFORMANCE THEREWITH.

IT IS A VIOLATION OF LAW FOR ANY PERSON, UNLESS ACTING UNDER THE DIRECTION OF A LICENSED ARCHITECT TO ALTER ANY ITEM ON THIS DOCUMENT IN ANY WAY. ANY LICENSEE WHO ALTERS THIS DOCUMENT IS REQUIRED BY LAW TO AFFIX HIS OR HER SEAL AND THE NOTATION "ALTERED BY" FOLLOWED BY HIS OR HER SIGNATURE AND A SPECIFIC DESCRIPTION OF THE ALTERATIONS.

PROGRESS
NOT FOR CONSTRUCTION

PROJECT PHASE:

- EXISTING CONDITIONS
- PRE-DESIGN
- SCHEMATIC DESIGN
- DESIGN DEVELOPMENT
- CONSTRUCTION DOCUMENTS
- BIDDING
- CONSTRUCTION ADMIN.
- AS BUILT

NO.	DESCRIPTION	DATE

NEWTON, MA 02466
138 HANCOCK ST - BARTON HOUSE

**BARTON UNITS
SQUARE FOOTAGE**

Project number	21-2233
Date	06.10.2022
Drawn by	BC
Checked by	ET

BSK5.1

Scale 3/32" = 1'-0"