

# Newton - Lowell Avenue



### Legend

- = Landscaped Areas
- = Detectable Warning Panel
- = Granite Curbing
- = HMA Pavement
- = ADA Wheelchair Ramp
- = Cement Concrete Sidewalk



June 16, 2022

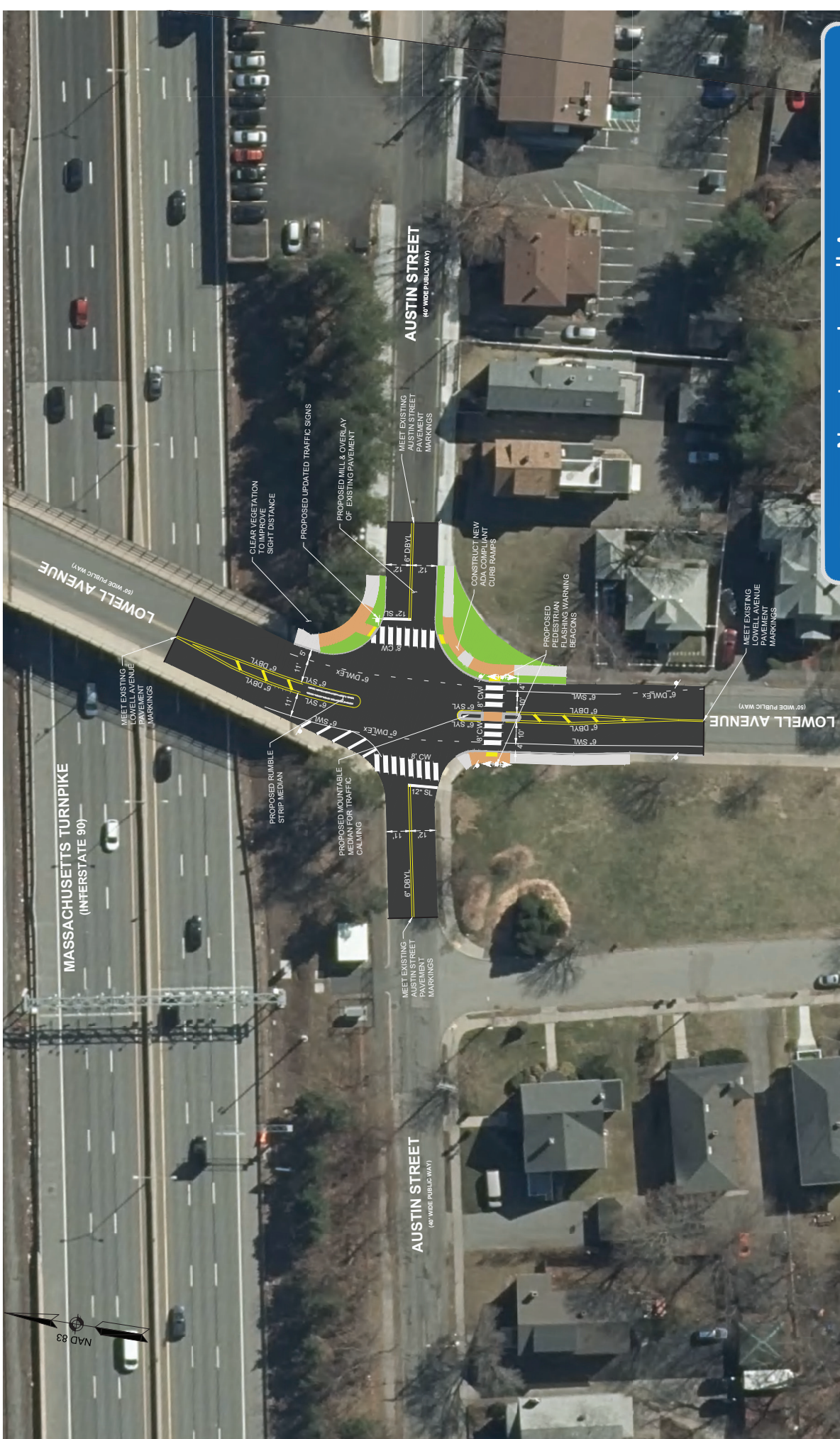


282 Merrimack St. | 311 Main Street  
 Worcester, MA 01608 | Worcester, MA 01608  
 978-294-1792 | 508-868-5104

169 Ocean Blvd, Unit 3  
 Harpoon, NH 03842  
 603-601-8154



Newton - Lowell Avenue



June 16, 2022



282 Merrimack St. | 311 Main Street  
 Worcester, MA 01608 | Worcester, MA 01608  
 978-294-1792 | 508-868-5104

- Legend**
- = Landscaped Areas
  - = Detectable Warning Panel
  - = Granite Curbing

- = HMA Pavement
- = ADA Wheelchair Ramp
- = Cement Concrete Sidewalk