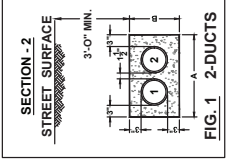
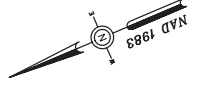


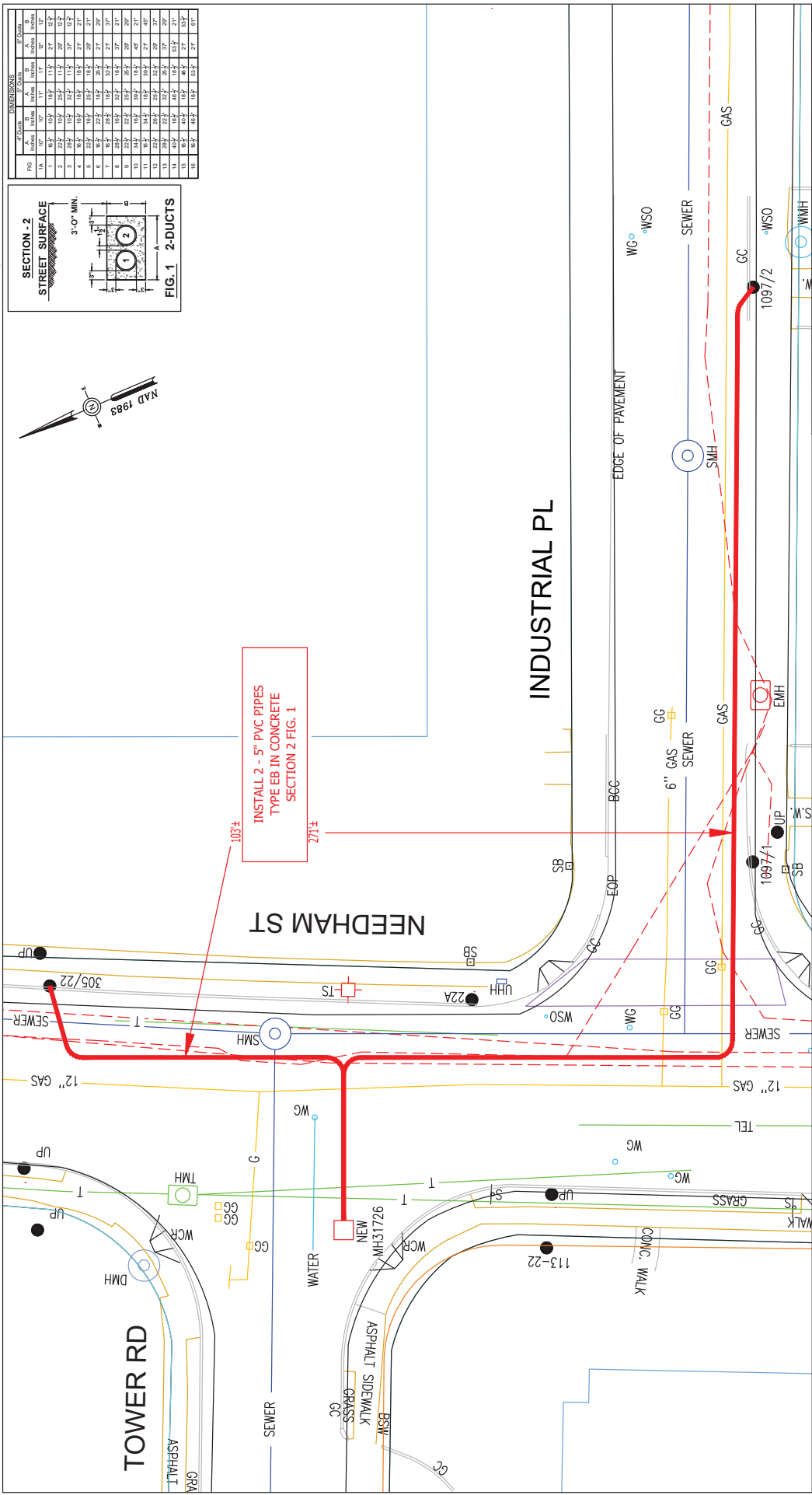
N:\SHARED\mmsb\02\IMAGE\BASELINE\VIEW\WEEH\HAAG.dwg



| PIPE | DIMENSIONS |       | SLOPE | LENGTH | INVERT | ELEVATION |
|------|------------|-------|-------|--------|--------|-----------|
|      | Ø          | W     |       |        |        |           |
| 1    | 18.5"      | 10.5" | 0.01  | 11.5'  | 27.12  | 52.4'     |
| 2    | 22.5"      | 10.5" | 0.02  | 11.5'  | 27.12  | 52.4'     |
| 3    | 28.5"      | 10.5" | 0.02  | 11.5'  | 27.12  | 52.4'     |
| 4    | 36.0"      | 10.5" | 0.02  | 11.5'  | 27.12  | 52.4'     |
| 5    | 42.0"      | 10.5" | 0.02  | 11.5'  | 27.12  | 52.4'     |
| 6    | 48.0"      | 10.5" | 0.02  | 11.5'  | 27.12  | 52.4'     |
| 7    | 54.0"      | 10.5" | 0.02  | 11.5'  | 27.12  | 52.4'     |
| 8    | 60.0"      | 10.5" | 0.02  | 11.5'  | 27.12  | 52.4'     |
| 9    | 66.0"      | 10.5" | 0.02  | 11.5'  | 27.12  | 52.4'     |
| 10   | 72.0"      | 10.5" | 0.02  | 11.5'  | 27.12  | 52.4'     |
| 11   | 78.0"      | 10.5" | 0.02  | 11.5'  | 27.12  | 52.4'     |
| 12   | 84.0"      | 10.5" | 0.02  | 11.5'  | 27.12  | 52.4'     |
| 13   | 90.0"      | 10.5" | 0.02  | 11.5'  | 27.12  | 52.4'     |
| 14   | 96.0"      | 10.5" | 0.02  | 11.5'  | 27.12  | 52.4'     |
| 15   | 102.0"     | 10.5" | 0.02  | 11.5'  | 27.12  | 52.4'     |
| 16   | 108.0"     | 10.5" | 0.02  | 11.5'  | 27.12  | 52.4'     |



INSTALL 2 - 5" PVC PIPES  
TYPE EB IN CONCRETE  
SECTION 2 FIG. 1



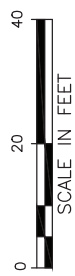
**MASS. LAW**  
REQUIRES 72 HOURS ADVANCE NOTICE TO UTILITY COMPANIES BEFORE DIGGING BY ANYONE. CALL DIG-SAFE 1-888-344-7233

**NSI STAR EVERSOURCE**  
1169 MASSACHUSETTS AVE. DORCHESTER, MASS. 02128  
Plan of NEEDHAM STREET, NEWTON

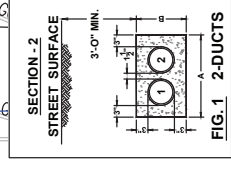
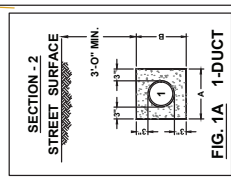
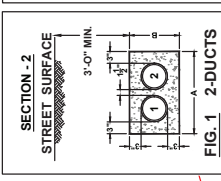
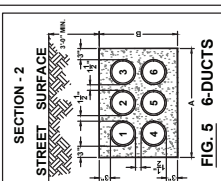
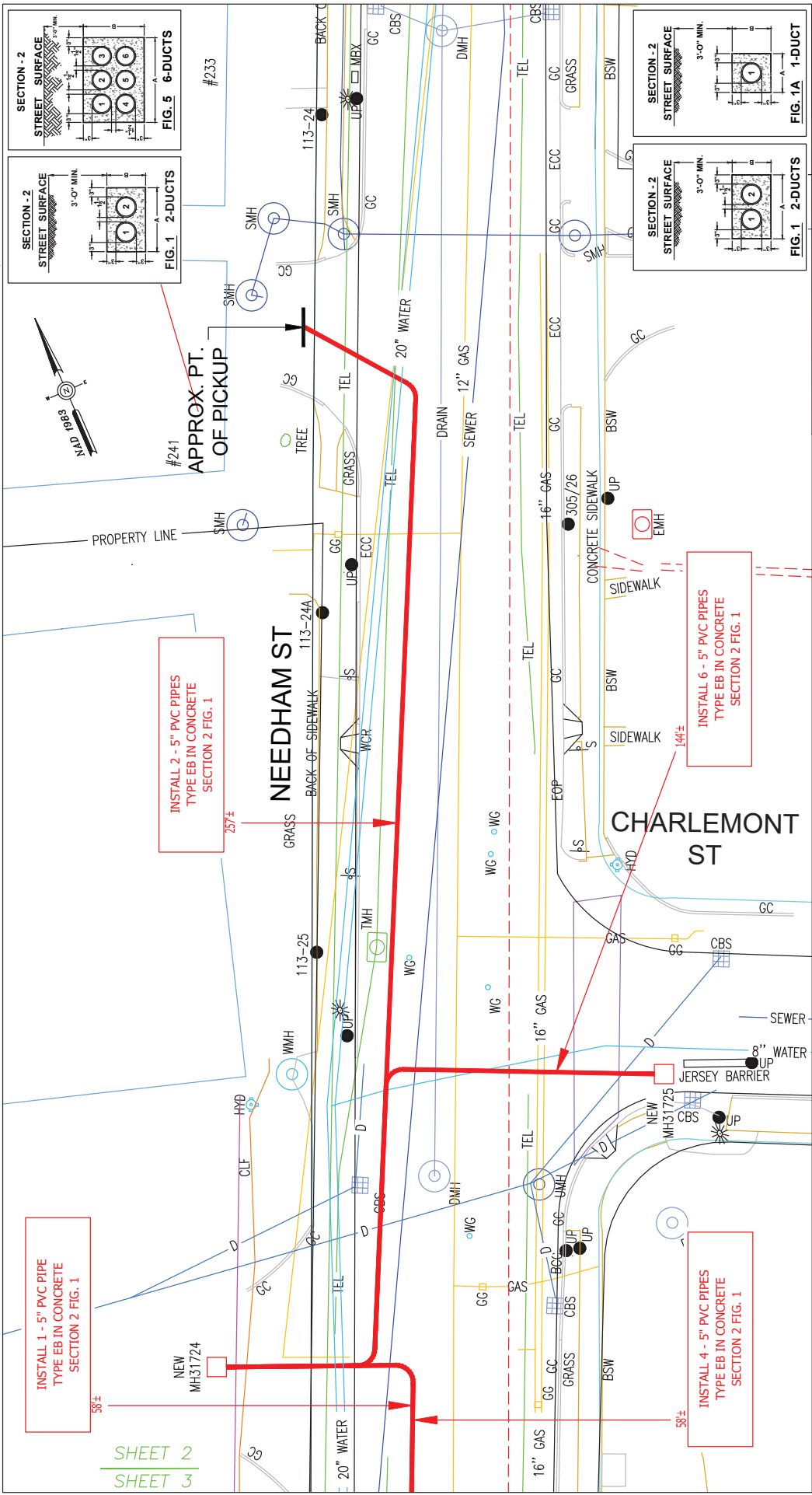
C# 156-22  
Work Order # 705248  
Surveyed by: GR/BP  
Plotted by: TL  
Research by: JC

Showing PROPOSED MANHOLE AND CONDUIT LOCATIONS

Proposed Structures: TL  
Approved: T THIBAUT  
Scale: 1"=20'  
SHEET: 1 of 4  
Date: JULY 25, 2022



N:\SHARED\mmsb\02\CIN\IMAGE\BASELINE\VIEW\NEEDHAM.dwg



INSTALL 2 - 5" PVC PIPES  
TYPE EB IN CONCRETE  
SECTION 2 FIG. 1

INSTALL 6 - 5" PVC PIPES  
TYPE EB IN CONCRETE  
SECTION 2 FIG. 1

INSTALL 1 - 5" PVC PIPE  
TYPE EB IN CONCRETE  
SECTION 2 FIG. 1

INSTALL 4 - 5" PVC PIPES  
TYPE EB IN CONCRETE  
SECTION 2 FIG. 1

SHEET 2  
SHEET 3

BY YOUR USE OF THE INFORMATION CONTAINED IN THIS MAP, YOU AGREE THAT NO WARRANTY OF ANY KIND IS MADE BY THIS COMPANY FOR ITS PRODUCTS, SERVICES, INFORMATION, OR ANY OTHER INFORMATION. THE USER SHALL BE RESPONSIBLE FOR OBTAINING NECESSARY PERMITS FROM ALL APPLICABLE AGENCIES AND FOR OBTAINING ALL NECESSARY INFORMATION TO PROTECT THE USER'S INVESTMENT. THE USER SHALL BE RESPONSIBLE FOR OBTAINING ALL NECESSARY INFORMATION TO PROTECT THE USER'S INVESTMENT. THE USER SHALL BE RESPONSIBLE FOR OBTAINING ALL NECESSARY INFORMATION TO PROTECT THE USER'S INVESTMENT.

**MASS. LAW**

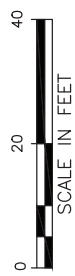
REQUIRES 72 HOURS ADVANCE NOTICE TO UTILITY COMPANIES BEFORE DIGGING BY ANYONE. CALL DIG-SAFE 1-888-344-7233

|                         |                     |
|-------------------------|---------------------|
| C# 156-22               | Work Order # 705248 |
| Work Order # 705248     | Surveyed by: GR/BP  |
| Research by: JC         | Plotted by: TL      |
| Proposed Structures: TL | Approved: T THIBAUT |
| Scale 1"=20'            | Date July 25, 2022  |
| SHEET 2 of 4            |                     |

**NS&E EVERSOURCE**  
1165 MASSACHUSETTS AVE. DORCHESTER, MASS. 02126

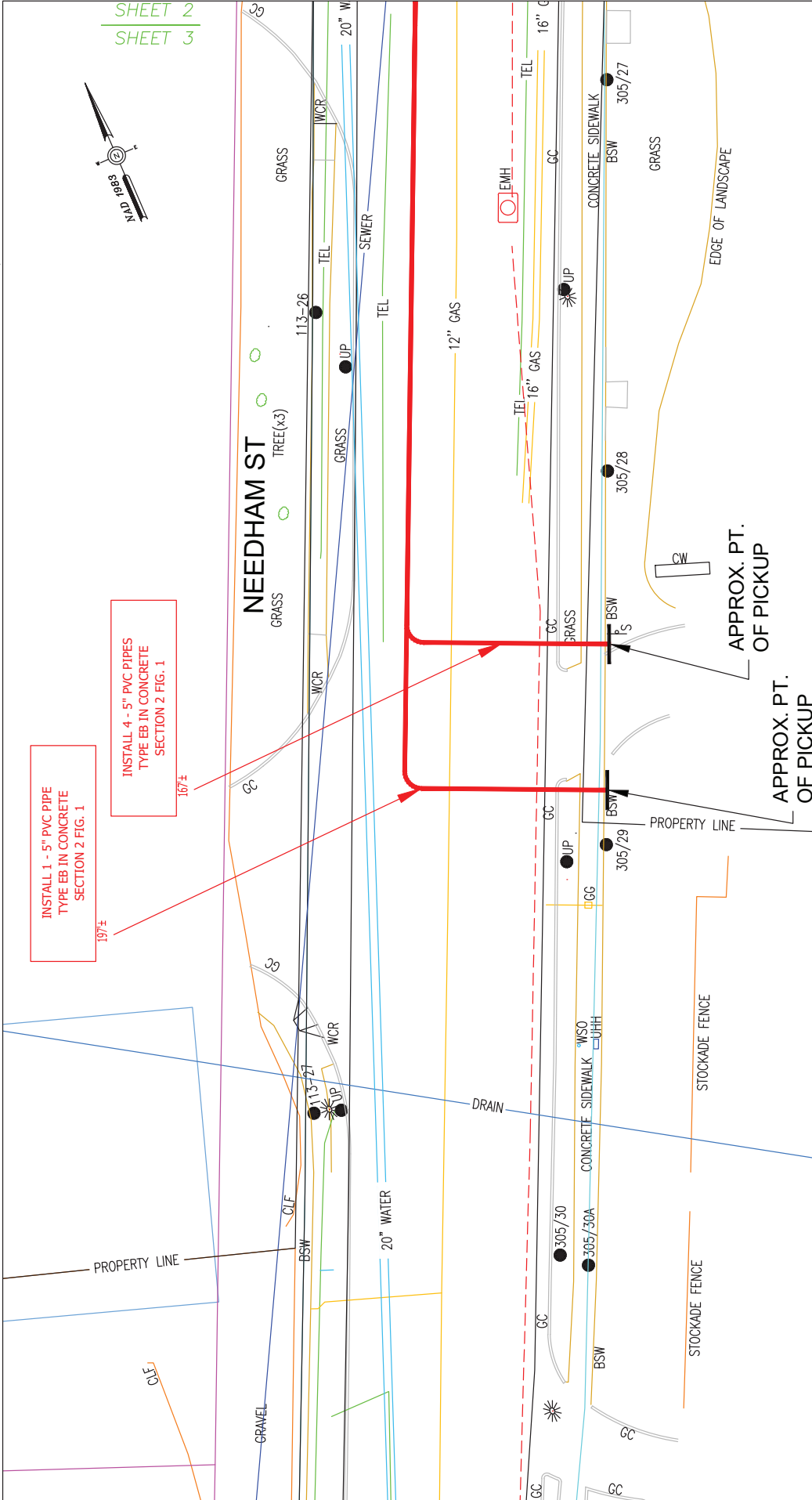
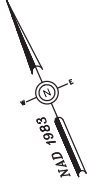
Plan of NEEDHAM STREET, NEWTON

Showing PROPOSED MANHOLE AND CONDUIT LOCATIONS



N:\SHARED\mms\02\CINAGE\BASELINE\VIEW\NEEDHAM.dwg

SHEET 2  
SHEET 3



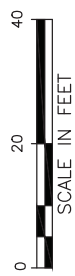
INSTALL 1 - 5" PVC PIPE  
TYPE EB IN CONCRETE  
SECTION 2 FIG. 1

INSTALL 4 - 5" PVC PIPES  
TYPE EB IN CONCRETE  
SECTION 2 FIG. 1

|  |                     |
|--|---------------------|
| <p><b>NEEDHAM EVERSOURCE</b><br/>1166 MASSACHUSETTS AVE. DORCHESTER, MASS. 02128</p> |                     |
| C# 156-22  | Work Order # 705248 |
| Ward #   | Surveys by: GR/BP   |
| Research by: JC  | Plotted by: TL      |
| Showing PROPOSED MANHOLE AND CONDUIT LOCATIONS                                       |                     |
| Proposed Structures: TL  | Approved: T THIBAUT |
| Scale 1"=20'   | Date JULY 25, 2022  |
| SHEET 3 of 4   | P#                  |

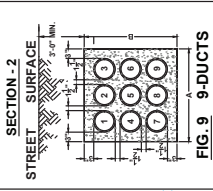
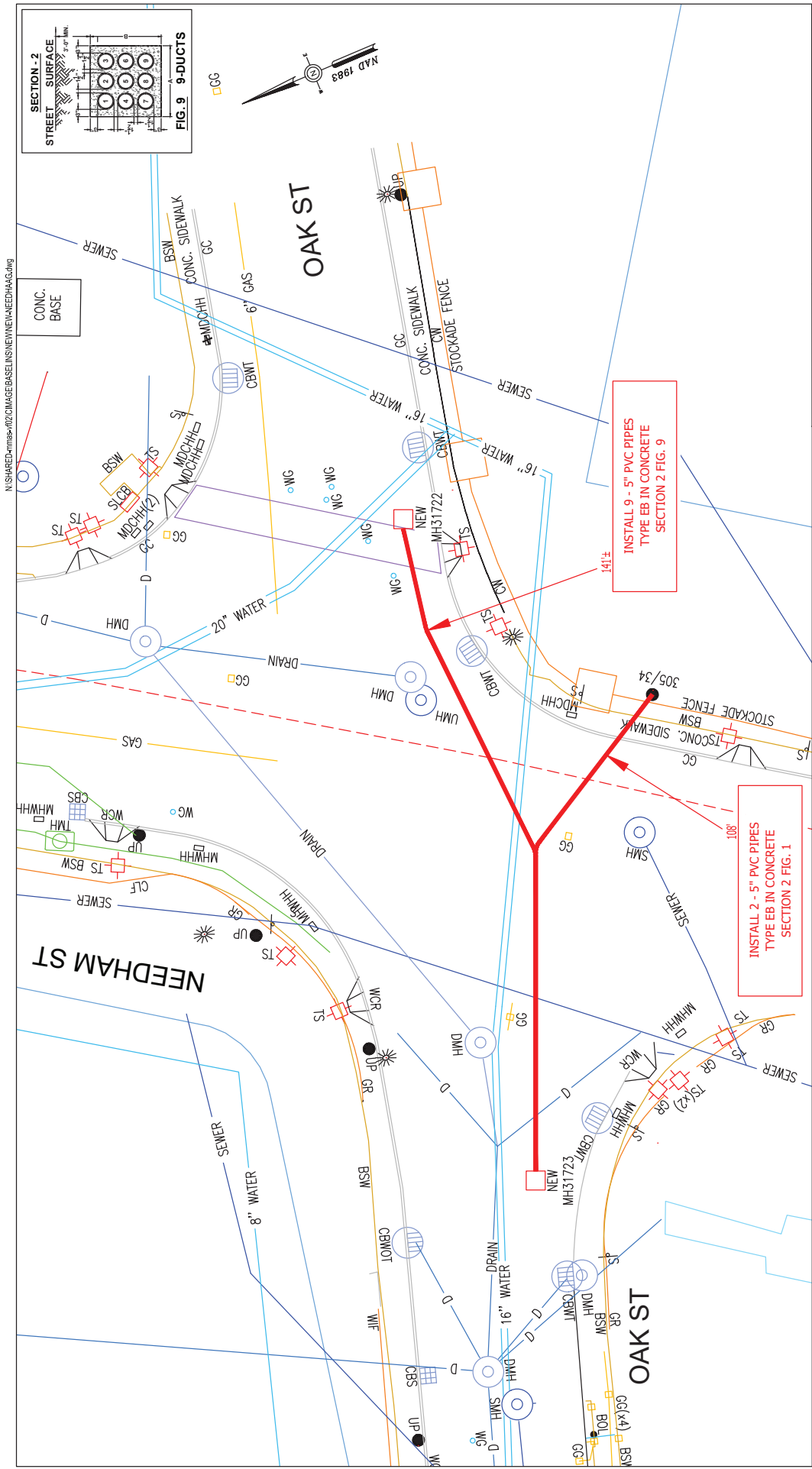
BY YOUR USE OF THE INFORMATION CONTAINED IN THIS MAP, YOU AGREE THAT NO WARRANTY OF ANY KIND IS MADE BY THE COMPANY FOR THE ACCURACY OF THE INFORMATION. THE COMPANY SHALL BE LIABLE FOR ANY LOSS OF PROFITS, REVENUE, OR OTHER DAMAGES, INCLUDING AND TO THE EXTENT PERMITTED BY LAW, YOU AGREE TO WAIVE ANY AND ALL OTHER EXPRESS OR IMPLIED WARRANTIES, INCLUDING BUT NOT LIMITED TO THE IMPLIED WARRANTIES OF MERCHANTABILITY AND FITNESS FOR A PARTICULAR PURPOSE. THE COMPANY SHALL NOT BE LIABLE FOR ANY LOSS OF PROFITS, REVENUE, OR OTHER DAMAGES, INCLUDING AND TO THE EXTENT PERMITTED BY LAW, YOU AGREE TO WAIVE ANY AND ALL OTHER EXPRESS OR IMPLIED WARRANTIES, INCLUDING BUT NOT LIMITED TO THE IMPLIED WARRANTIES OF MERCHANTABILITY AND FITNESS FOR A PARTICULAR PURPOSE.

**MASS. LAW**  
REQUIRES 72 HOURS ADVANCE NOTICE TO UTILITY COMPANIES BEFORE DIGGING BY ANYONE. CALL DIG-SAFE 1-888-344-7233



APPROX. PT. OF PICKUP

APPROX. PT. OF PICKUP



INSTALL 9 - 5" PVC PIPES  
TYPE EB IN CONCRETE  
SECTION 2 FIG. 9

INSTALL 2 - 5" PVC PIPES  
TYPE EB IN CONCRETE  
SECTION 2 FIG. 1

|                     |           |
|---------------------|-----------|
| Work Order #        | C# 156-22 |
| Work Order #        | 705248    |
| Surveyed by         | GR/BP     |
| Research by         | JC        |
| Plotted by          | TL        |
| Proposed Structures | TL        |
| Approved            | T THBAULT |
| Scale               | 1"=20'    |
| Sheet               | 4 of 4    |

**MASS. LAW**  
REQUIRES 72 HOURS ADVANCE NOTICE TO UTILITY COMPANIES BEFORE DIGGING BY ANYONE. CALL DIG-SAFE 1-888-344-7233

**NSI/EVERSOURCE**  
1165 MASSACHUSETTS AVE. DORCHESTER, MASS. 02128  
Plan of NEEDHAM STREET, NEWTON  
Showing PROPOSED MANHOLE AND CONDUIT LOCATIONS