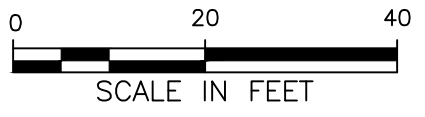
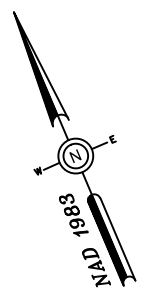


FIG	DIMENSIONS					
	4" Ducts		5" Ducts		6" Ducts	
	A Inches	B Inches	A Inches	B Inches	A Inches	B Inches
1A	10"	10"	11"	11"	12"	12"
1	16 1/2"	10 1/2"	18 1/2"	11 1/2"	21"	12 1/2"
2	22 1/2"	10 1/2"	25 1/2"	11 1/2"	29"	12 1/2"
3	28 1/2"	10 1/2"	32 1/2"	11 1/2"	37"	12 1/2"
4	16 1/2"	16 1/2"	18 1/2"	18 1/2"	21"	21"
5	22 1/2"	16 1/2"	25 1/2"	18 1/2"	29"	21"
6	16 1/2"	22 1/2"	18 1/2"	25 1/2"	21"	29"
7	16 1/2"	28 1/2"	18 1/2"	32 1/2"	21"	37"
8	28 1/2"	16 1/2"	32 1/2"	18 1/2"	37"	21"
9	22 1/2"	22 1/2"	25 1/2"	25 1/2"	29"	29"
10	34 1/2"	16 1/2"	39 1/2"	18 1/2"	45"	21"
11	16 1/2"	34 1/2"	18 1/2"	39 1/2"	21"	45"
12	22 1/2"	26 1/2"	25 1/2"	32 1/2"	29"	37"
13	28 1/2"	22 1/2"	32 1/2"	25 1/2"	37"	29"
14	40 1/2"	16 1/2"	46 1/2"	18 1/2"	53"	21"
15	16 1/2"	40 1/2"	18 1/2"	46 1/2"	21"	53"
16	16 1/2"	46 1/2"	18 1/2"	53"	21"	61"



BY YOUR USE OF THE INFORMATION CONTAINED IN THIS MAP, YOU AGREE THAT NO WARRANTY OF ANY KIND, EXPRESS OR IMPLIED, IS GIVEN WITH RESPECT TO THE INFORMATION. NEITHER NSTAR ELECTRIC COMPANY, NSTAR GAS COMPANY NOR ITS PARENTS, AFFILIATES, OFFICERS, DIRECTORS, SHAREHOLDERS, EMPLOYEES OR AGENTS (COLLECTIVELY THE "NSTAR ENTITIES") SHALL BE LIABLE FOR ANY LOSS OR INJURY CAUSED IN WHOLE OR IN PART BY USE OF THIS INFORMATION OR IN RELIANCE UPON IT, TO THE MAXIMUM EXTENT ALLOWED BY LAW, YOU AGREE BY YOUR ACCEPTANCE OF THE INFORMATION TO RELEASE, INDEMNIFY AND HOLD THE NSTAR ENTITIES HARMLESS FROM ANY SUCH LOSS OR INJURY.

THE INFORMATION MAY NOT REPRESENT A SURVEY, MAY NOT BE THE MOST COMPLETE AND IS SUBJECT TO CHANGE WITHOUT NOTICE. NO LIABILITY IS ASSUMED FOR THE ACCURACY OF THE INFORMATION, EITHER EXPRESSED OR IMPLIED. UNAUTHORIZED ATTEMPTS TO MODIFY THE INFORMATION OR USE THE INFORMATION FOR OTHER THAN ITS INTENDED PURPOSES ARE PROHIBITED.

MASS. LAW
REQUIRES 72 HOURS ADVANCE NOTICE TO UTILITY COMPANIES BEFORE DIGGING BY ANYONE. CALL DIG-SAFE 1-888-344-7233

C# 156-22
Ward #
Work Order # 7056248
Surveyed by: GR/BP
Research by: JC
Plotted by: TL
Proposed Structures: TL
Approved: T THIBAUT
P#

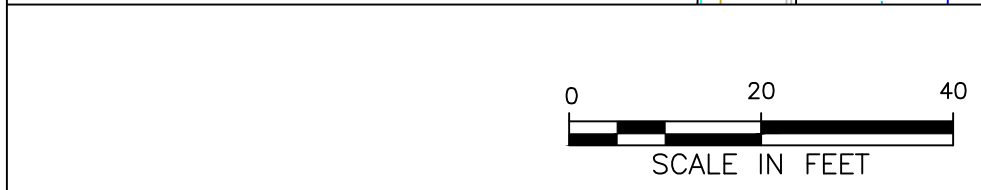
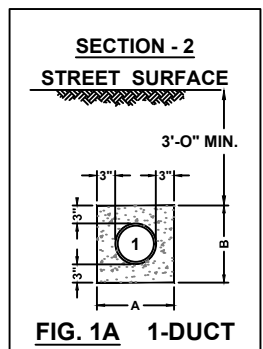
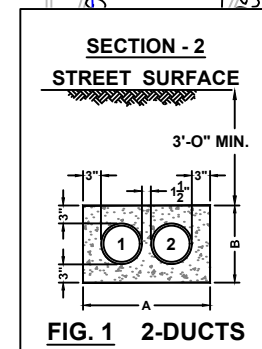
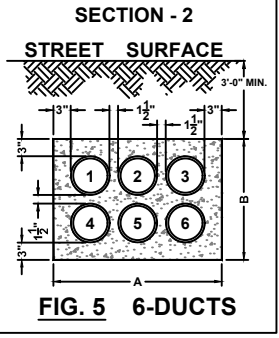
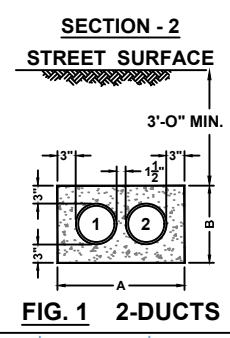
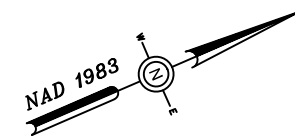
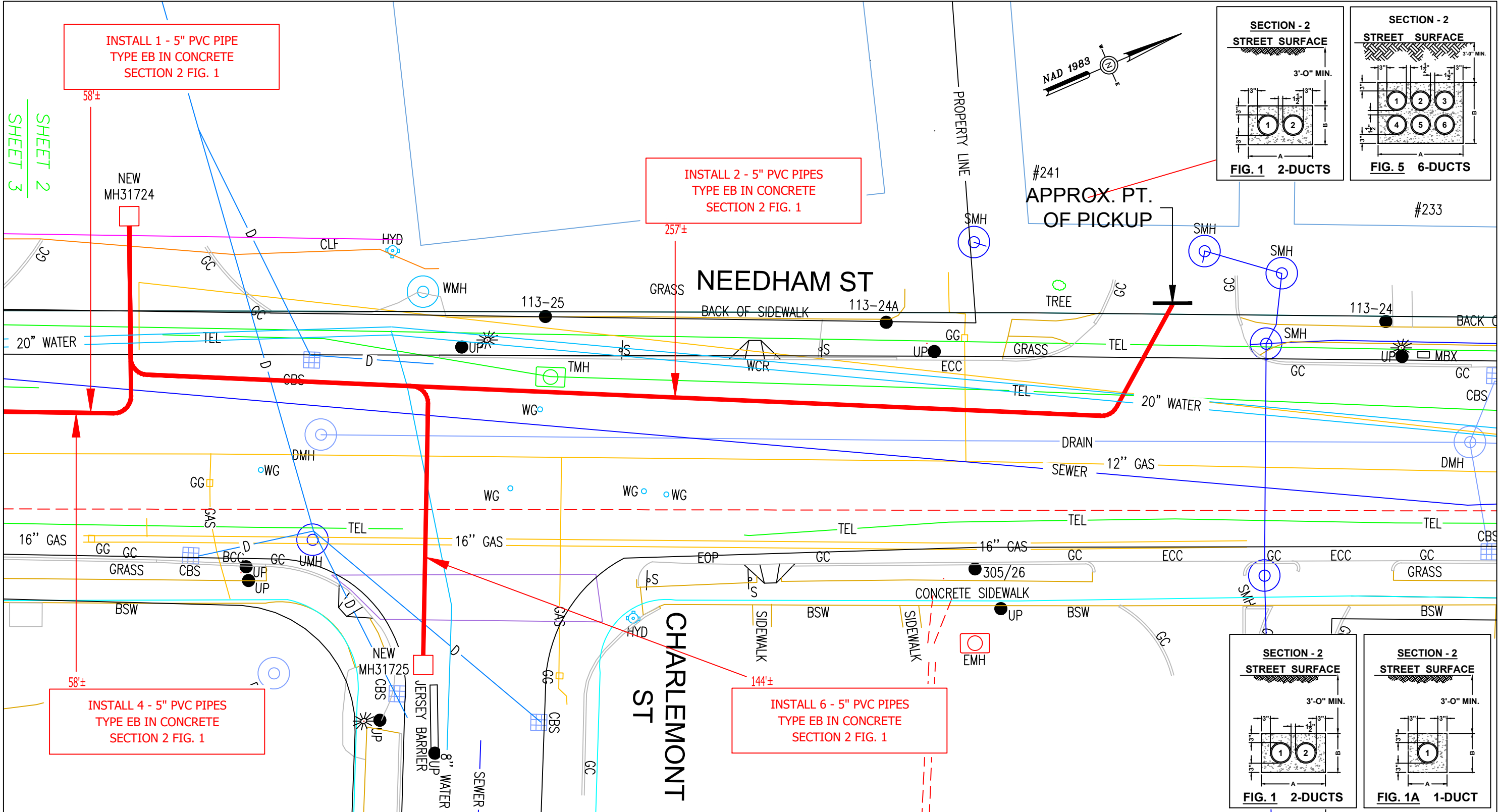
NSTAR EVERSOURCE
ELECTRIC
d/b/a
1165 MASSACHUSETTS AVE. DORCHESTER, MASS. 02125

Plan of NEEDHAM STREET, NEWTON

Showing PROPOSED MANHOLE AND CONDUIT LOCATIONS

Scale 1"=20' Date JULY 25, 2022

SHEET 1 of 4



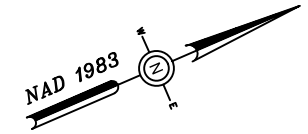
BY YOUR USE OF THE INFORMATION CONTAINED IN THIS MAP, YOU AGREE THAT NO WARRANTY OF ANY KIND, EXPRESS OR IMPLIED, IS GIVEN WITH RESPECT TO THE INFORMATION. NEITHER NSTAR ELECTRIC COMPANY, NSTAR GAS COMPANY NOR ITS PARENTS, AFFILIATES, OFFICERS, DIRECTORS, SHAREHOLDERS, EMPLOYEES OR AGENTS (COLLECTIVELY THE "NSTAR ENTITIES") SHALL BE LIABLE FOR ANY LOSS OR INJURY CAUSED IN WHOLE OR IN PART BY USE OF THIS INFORMATION OR IN RELIANCE UPON IT, TO THE MAXIMUM EXTENT ALLOWED BY LAW, YOU AGREE BY YOUR ACCEPTANCE OF THE INFORMATION TO RELEASE, INDEMNIFY AND HOLD THE NSTAR ENTITIES HARMLESS FROM ANY SUCH LOSS OR INJURY.

THE INFORMATION MAY NOT REPRESENT A SURVEY, MAY NOT BE THE MOST COMPLETE AND IS SUBJECT TO CHANGE WITHOUT NOTICE. NO LIABILITY IS ASSUMED FOR THE ACCURACY OF THE INFORMATION, EITHER EXPRESSED OR IMPLIED. UNAUTHORIZED ATTEMPTS TO MODIFY THE INFORMATION OR USE THE INFORMATION FOR OTHER THAN ITS INTENDED PURPOSES ARE PROHIBITED.

MASS. LAW
REQUIRES 72 HOURS ADVANCE NOTICE TO UTILITY COMPANIES BEFORE DIGGING BY ANYONE. CALL DIG-SAFE 1-888-344-7233

C# 156-22
Ward #
Work Order # 7056248
Surveyed by: GR/BP
Research by: JC
Plotted by: TL
Proposed Structures: TL
Approved: T THIBAUT
P#

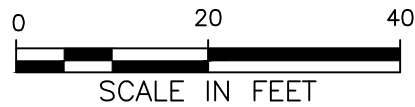
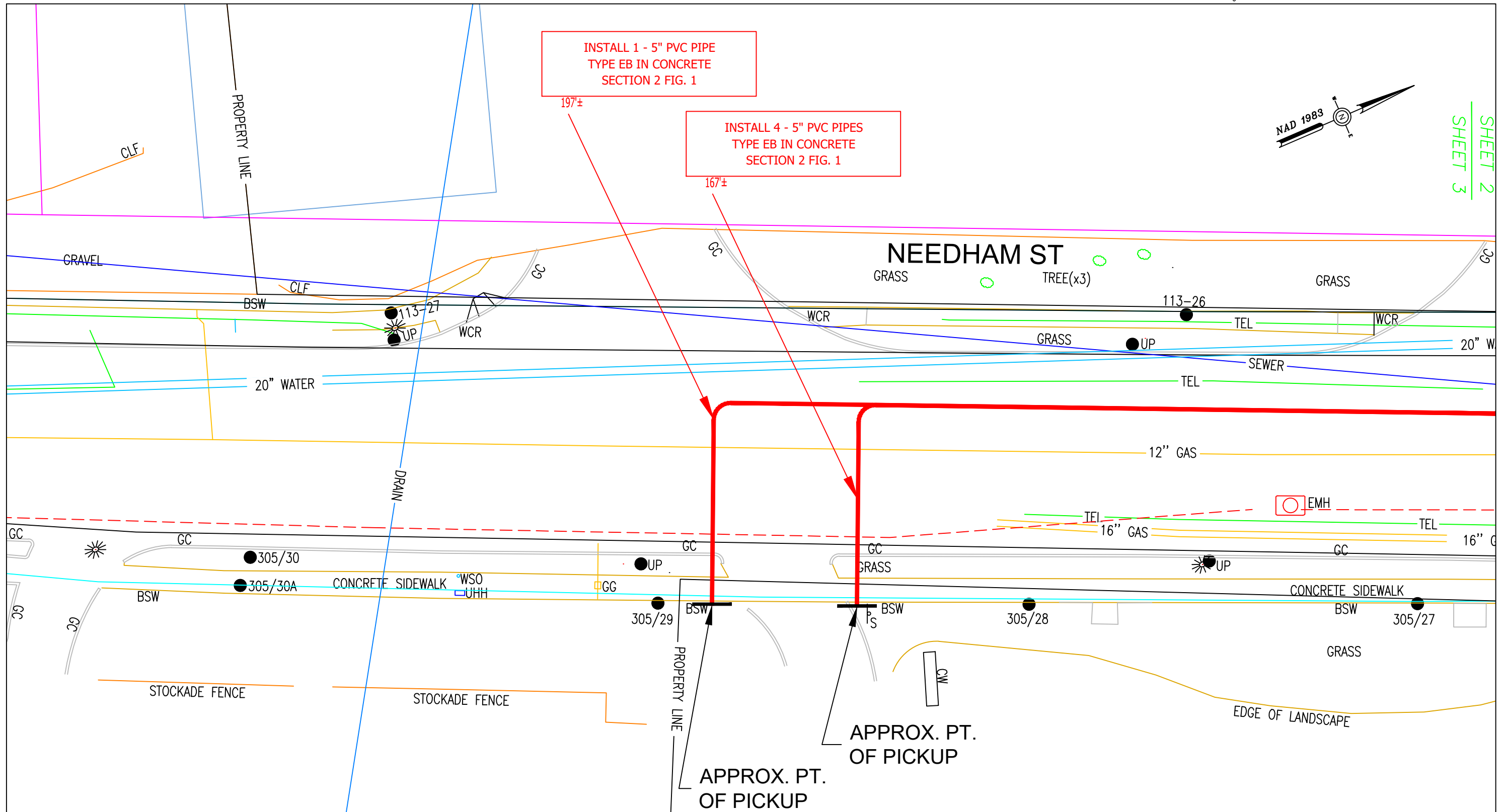
NSTAR EVERSOURCE ELECTRIC d/b/a 1165 MASSACHUSETTS AVE. DORCHESTER, MASS. 02125	
Plan of NEEDHAM STREET, NEWTON	
Showing PROPOSED MANHOLE AND CONDUIT LOCATIONS	
Scale 1"=20'	Date JULY 25, 2022
SHEET 2 of 4	



SHEET 2
SHEET 3

INSTALL 1 - 5" PVC PIPE
TYPE EB IN CONCRETE
SECTION 2 FIG. 1

INSTALL 4 - 5" PVC PIPES
TYPE EB IN CONCRETE
SECTION 2 FIG. 1



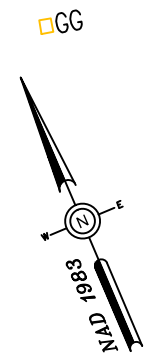
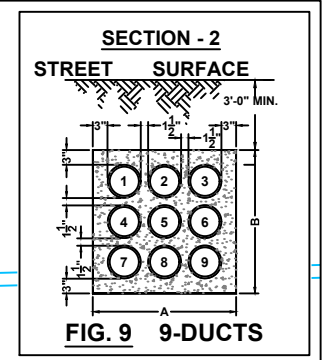
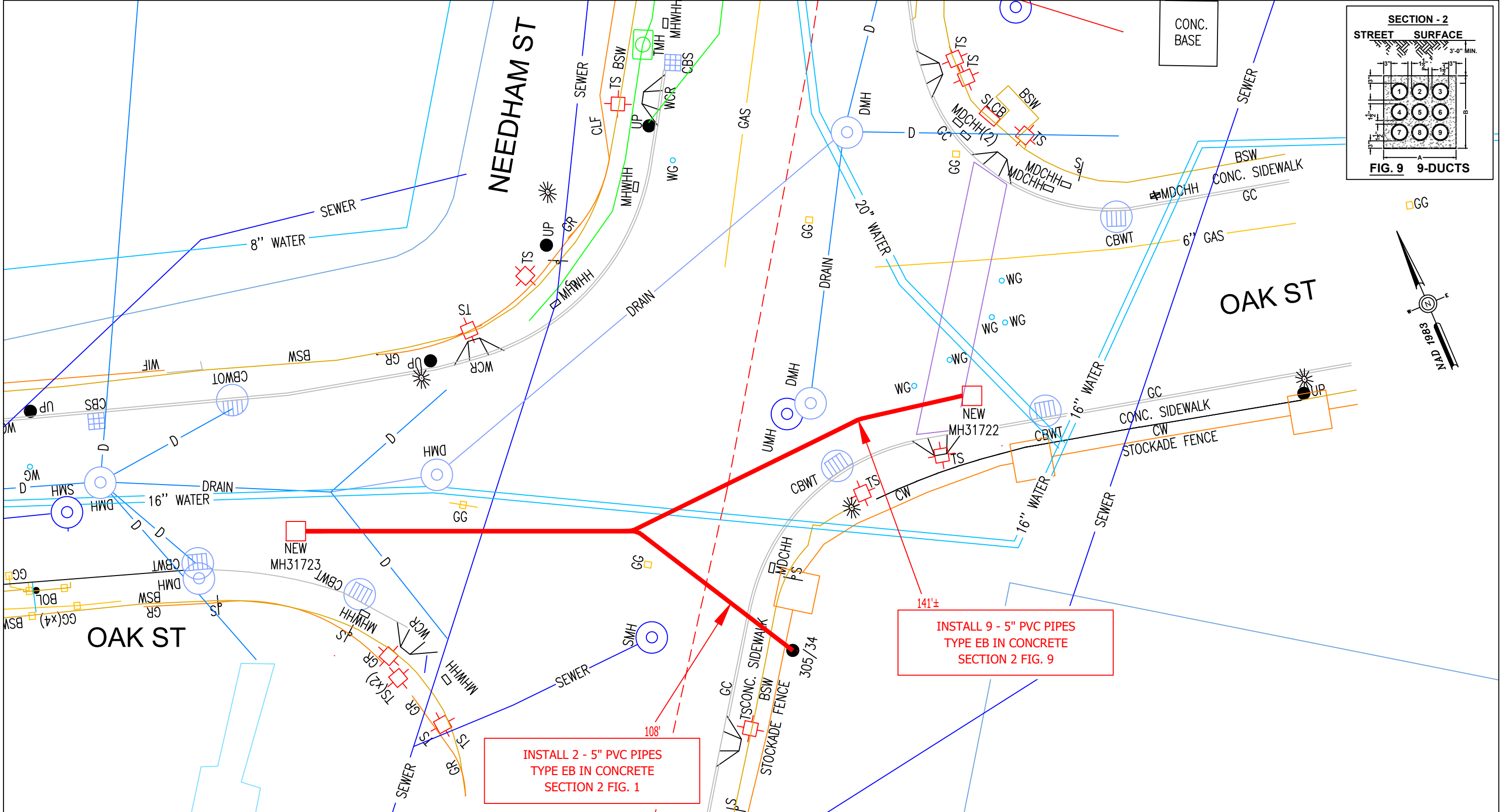
BY YOUR USE OF THE INFORMATION CONTAINED IN THIS MAP, YOU AGREE THAT NO WARRANTY OF ANY KIND, EXPRESS OR IMPLIED, IS GIVEN WITH RESPECT TO THE INFORMATION. NEITHER NSTAR ELECTRIC COMPANY, NSTAR GAS COMPANY NOR ITS PARENTS, AFFILIATES, OFFICERS, DIRECTORS, SHAREHOLDERS, EMPLOYEES OR AGENTS (COLLECTIVELY THE "NSTAR ENTITIES") SHALL BE LIABLE FOR ANY LOSS OR INJURY CAUSED IN WHOLE OR IN PART BY USE OF THIS INFORMATION OR IN RELIANCE UPON IT, TO THE MAXIMUM EXTENT ALLOWED BY LAW. YOU AGREE BY YOUR ACCEPTANCE OF THE INFORMATION TO RELEASE, INDEMNIFY AND HOLD THE NSTAR ENTITIES HARMLESS FROM ANY SUCH LOSS OR INJURY.

THE INFORMATION MAY NOT REPRESENT A SURVEY, MAY NOT BE THE MOST COMPLETE AND IS SUBJECT TO CHANGE WITHOUT NOTICE. NO LIABILITY IS ASSUMED FOR THE ACCURACY OF THE INFORMATION, EITHER EXPRESSED OR IMPLIED. UNAUTHORIZED ATTEMPTS TO MODIFY THE INFORMATION OR USE THE INFORMATION FOR OTHER THAN ITS INTENDED PURPOSES ARE PROHIBITED.

MASS. LAW
REQUIRES 72 HOURS ADVANCE NOTICE TO UTILITY COMPANIES
BEFORE DIGGING BY ANYONE. CALL DIG-SAFE 1-888-344-7233

C# 156-22
Ward #
Work Order # 7056248
Surveyed by: GR/BP
Research by: JC
Plotted by: TL
Proposed Structures: TL
Approved: T THIBAUT
P#

NSTAR EVERSOURCE ELECTRIC d/b/a 1165 MASSACHUSETTS AVE. DORCHESTER, MASS. 02125	
Plan of NEEDHAM STREET, NEWTON	
Showing PROPOSED MANHOLE AND CONDUIT LOCATIONS	
Scale 1"=20'	Date JULY 25, 2022
SHEET 3 of 4	



BY YOUR USE OF THE INFORMATION CONTAINED IN THIS MAP, YOU AGREE THAT NO WARRANTY OF ANY KIND, EXPRESS OR IMPLIED, IS GIVEN WITH RESPECT TO THE INFORMATION. NEITHER NSTAR ELECTRIC COMPANY, NSTAR GAS COMPANY NOR ITS PARENTS, AFFILIATES, OFFICERS, DIRECTORS, SHAREHOLDERS, EMPLOYEES OR AGENTS (COLLECTIVELY THE "NSTAR ENTITIES") SHALL BE LIABLE FOR ANY LOSS OR INJURY CAUSED IN WHOLE OR IN PART BY USE OF THIS INFORMATION OR IN RELIANCE UPON IT, TO THE MAXIMUM EXTENT ALLOWED BY LAW. YOU AGREE BY YOUR ACCEPTANCE OF THE INFORMATION TO RELEASE, INDEMNIFY AND HOLD THE NSTAR ENTITIES HARMLESS FROM ANY SUCH LOSS OR INJURY.

THE INFORMATION MAY NOT REPRESENT A SURVEY, MAY NOT BE THE MOST COMPLETE AND IS SUBJECT TO CHANGE WITHOUT NOTICE. NO LIABILITY IS ASSUMED FOR THE ACCURACY OF THE INFORMATION, EITHER EXPRESSED OR IMPLIED. UNAUTHORIZED ATTEMPTS TO MODIFY THE INFORMATION OR USE THE INFORMATION FOR OTHER THAN ITS INTENDED PURPOSES ARE PROHIBITED.

MASS. LAW
 REQUIRES 72 HOURS ADVANCE NOTICE TO UTILITY COMPANIES
 BEFORE DIGGING BY ANYONE. CALL DIG-SAFE 1-888-344-7233

C# 156-22
Ward #
Work Order # 7056248
Surveyed by: GR/BP
Research by: JC
Plotted by: TL
Proposed Structures: TL
Approved: T THIBAUT
P#

NSTAR EVERSOURCE ELECTRIC d/b/a	
1165 MASSACHUSETTS AVE. DORCHESTER, MASS. 02125	
Plan of NEEDHAM STREET, NEWTON	
Showing PROPOSED MANHOLE AND CONDUIT LOCATIONS	
Scale	1"=20'
Date	JULY 25, 2022
SHEET	4 of 4