

**CITY OF NEWTON  
PURCHASING DEPARTMENT**

***PROJECT FOR PUBLIC BUILDINGS  
MAINTENANCE SERVICE***

**PROJECT MANUAL:  
ANNUAL EXTERIOR and INTERIOR DOOR REPAIRS  
AND REPLACEMENT SERVICE  
*INVITATION FOR BID #24-15***

**Bid Opening Date: September 21, 2023 at 10:30 a.m.**

**SEPTEMBER 2023  
Ruthanne Fuller, Mayor**

# CITY OF NEWTON

## PROJECT MANUAL TABLE OF CONTENTS

### ANNUAL EXTERIOR and INTERIOR DOOR REPAIRS AND REPLACEMENT SERVICE

	Page #
Cover Page	1
Table of Contents	2
1. - Invitation for Bid	3-4
2. - Instructions to Bidders	5-8
3. - General Conditions of the Contract	9-14
4. - Work Specifications	15-18
5. - Product Schedule	19
6. - Drawings: SD-308 and SD-309	20-21
7. - Bid Form	22-23
▪ Itemized Bid Sheet	24-25
▪ Bidder's Qualifications and Reference Form	26-27
▪ Certificate of Non-Collusion	28
▪ Certification of Tax Compliance	29
▪ Certificate of Foreign Corporation	30
▪ Debarment Letter	31
▪ IRS Form W-9	32
▪ Business Category Information Form	33
8. - Contract Forms ( <b>Informational only – not required with bid</b> )	34
▪ Owner - Contractor Contract	35-37
▪ Certificate of Authority - Corporate	38
▪ Payment Bond	39
9. - City's Work Order Form	40
10. - Wage Rate Requirements	41
▪ Department of Labor Minimum Wage Rates	42-80
▪ Notice of Awarding Authorities	81
▪ Statement of Compliance	82
▪ Weekly Payroll Report Form	83

**END OF SECTION**

**CITY OF NEWTON**  
**PURCHASING DEPARTMENT**  
**INVITATION FOR BID #24-15**

The City of Newton invites sealed bids in accordance with M.G.L. c.149 from Contractors for

**ANNUAL EXTERIOR AND INTERIOR DOOR REPAIRS AND REPLACEMENT SERVICES**

**Bids** will be received until **10:30 a.m., Thursday, September 21, 2023** at the Purchasing Department, Room 108, Newton City Hall, 1000 Commonwealth Ave., Newton, MA 02459. Bids will not be accepted nor may submitted bids be corrected, modified or withdrawn after the deadline for bids. Following the deadline for bids, all bids received within the time specified will be publicly opened and read aloud.

Contract Documents will be available online at the City's website: [www.newtonma.gov/bids](http://www.newtonma.gov/bids) after: **10:00 a.m., September 7, 2023**. Bidders are responsible for downloading the specifications from the City's web site at [www.newtonma.gov/bids](http://www.newtonma.gov/bids). Bidders are requested to email the Purchasing Department ([purchasing@newtonma.gov](mailto:purchasing@newtonma.gov)) their Company Name, Address, Email address, Phone & Facsimile number and what bid # (i.e. #24-15) they have downloaded.

**The term of this contract shall extend from January 1, 2024 through December 31, 2024 with the option, at the City's sole discretion, to extend the contract for two (2) additional one (1) year terms with no change in the contract price and terms and conditions.**

All bids must be accompanied by a copy of a "Certificate of Eligibility" (DCAMM Form CQ-7) issued by the Department of Capital Asset Management and Maintenance (DCAMM) and a "Contractor Update Statement" (DCAMM Form CQ-3). The category of work for which the Bidder must be certified: **Doors & Windows**.

There is no charge for contract documents. Award will be made to the lowest bidder deemed responsible and eligible.

All bids must be accompanied by a bid deposit in an amount that is not less than five percent (5%) of the value of the bid, including all add alternates. Bid deposits, payable to the City of Newton, shall be either in the form of a bid bond, or cash, or a certified check on, or a treasurer's or cashier's check issued by, a responsible bank or trust company. Bidders are reminded that the bid deposit covers the City for damages when a bidder withdraws its bid after the bid submission date. **Be advised that to the extent permitted by the law the City will retain all bid deposits for withdrawn bids.**

**The costs of any bond and any insurance required in this Invitation For Bid are the responsibility of the bidder; such costs will not be reimbursed by City and should be included in your bid.**

All bids are subject to the provisions of M.G.L. Chapter 149, Section 44 A-J. **Wages are subject** to minimum wage rates determined by the Massachusetts Department of Labor and Industries pursuant to M.G.L. Chapter 149, Sec. 26 to 27H. The schedule of wage rates applicable to this contract is included in the bidding documents. In addition, the prevailing wage schedule will be updated annually for all public construction projects lasting longer than one (1) year. You will be required to pay the rates set out in any updated prevailing wage schedule. Increases in prevailing wage schedules will not be the basis for change order requests. The successful bidder will be required to provide a Certificate of Insurance demonstrating current coverage of the type and amounts set forth in the Project Manual. The successful bidder will be required to furnish a **Labor and Materials Payment Bond** in the amount of **50%** of the contract total.

**All bids shall be submitted as one (1) ORIGINAL and one (1) COPY.**

All City of Newton bids are available on the City's web site, [www.newtonma.gov/bids](http://www.newtonma.gov/bids) Invitation for Bid. It is the sole responsibility of the contractor downloading these bids to ensure they have received any and all addenda prior to the bid opening. Addenda's will be available online within the original bid document as well as a separate file. If you download bids from the internet site and would like to make it known that your company has done so, you may fax the Purchasing Department (617) 796-1227 or email [purchasing@newtonma.gov](mailto:purchasing@newtonma.gov) with your NAME, ADDRESS, PHONE, FAX AND INVITATION FOR BID NUMBER.

The City will reject any and all bids in accordance with the above referenced General Laws. In addition, the City reserves the right to waive minor informalities in any or all bids, or to reject any or all bids (in whole or in part) if it be in the public interest to do so.

In the event that any person wishes to attend a bid opening or pre-bid meeting, accessible and reasonable accommodations will be provided to persons requiring assistance. If you need a reasonable accommodation, please contact the city of Newton's ADA Coordinator, Jini Fairley, at least two business days in advance of the meeting: [jfairley@newtonma.gov](mailto:jfairley@newtonma.gov) or (617) 796-1253. For Telecommunications Relay Service, please dial 711

CITY OF NEWTON

A handwritten signature in black ink that reads "Nicholas Read". The signature is written in a cursive, slightly slanted style.

Nicholas Read  
*Chief Procurement Officer*  
September 7, 2023

**CITY OF NEWTON**  
**DEPARTMENT OF PURCHASING**  
**INSTRUCTIONS TO BIDDERS**

**ARTICLE 1 - BIDDER'S REPRESENTATION**

- 1.1 Each General Bidder (hereinafter called the "Bidder") by making a bid (hereinafter called "bid") represents that:
1. The Bidder has read and understands the Bidding Documents, Contract Forms, General Conditions, Conditions of the Contract, General Requirements and Project Specifications (collectively, referred to as the "Contract Documents") and the bid is made in accordance therewith.
  2. The Bidder is familiar with the local conditions under which the work has to be performed.
- 1.2 Failure to so examine the Contract Documents or be familiar with local conditions will not relieve any Bidder from any obligation under the bid as submitted.

**ARTICLE 2 - REQUEST FOR INTERPRETATION**

- 2.1 Bidders shall promptly notify the City of any ambiguity, inconsistency, or error which they may discover upon examination of the Contract Documents, the site, and local conditions.
- 2.2 Bidders requiring clarification or interpretation of the Contract Documents shall make a written request to the *Chief Procurement Officer*, at [purchasing@newtonma.gov](mailto:purchasing@newtonma.gov) or via facsimile (617) 796-1227. The City will only answer such requests if received by **Friday, September 15, 2023 at 12:00 noon**. In the event that the bid opening date is changed, the deadline for informational requests may also change as provided in an addendum issued by the City.
- 2.3 Interpretation, correction, or change in the Contract Documents will be made by addendum which will become part of the Contract Documents. The City will not be held accountable for any oral communication.
- 2.4 Addenda will be emailed to every individual or firm on record as having taken a set of Contract Documents. Addenda will be emailed to every individual or firm on record as having taken a set of Contract Documents. Receipt of all addenda issued must be acknowledged in the Bid Form. **YOUR FAILURE TO ACKNOWLEDGE ALL ADDENDA MAY RESULT IN YOUR BID BEING REJECTED AS NON-RESPONSIVE.**
- 2.5 Copies of addenda will be made available for inspection at the location listed in the Invitation for Bids (IFB) where Contract Documents are on file, in addition to being available online at [www.newtonma.gov/bids](http://www.newtonma.gov/bids).
- 2.6 Bidders or proposers contacting ANY CITY EMPLOYEE regarding an IFB, outside of the Purchasing Department, once an IFB has been released, may be disqualified from the procurement process.
- 2.7 Bidders downloading information off the internet web site are solely responsible for obtaining any addenda prior to the bid opening. If the bidder makes itself known to the Purchasing Department, at [purchasing@newtonma.gov](mailto:purchasing@newtonma.gov) or via facsimile (617) 796-1227, it shall be placed on the bidder's list. Bidders must provide the Purchasing Department with their company's name, street address, city, state, zip, phone, fax, email address and **INVITATION FOR BID #24-15**.

**ARTICLE 3 - MBE PARTICIPATION**

- 3.1 Notice is hereby given that the Mayor's Affirmative Action Plan for the City of Newton in effect at the time of this solicitation is applicable to all construction contracts in excess of \$10,000.00.
- 3.2 Notice is hereby given that the City of Newton Minority/Women Business Enterprise Plan and the Supplemental Equal Employment Opportunity Anti-Discrimination and Affirmative Action Program in effect at the time of this solicitation are applicable to all City contracts for goods and services in excess of \$50,000.00.
- 3.3 Copies of the Plans and Program referred to in Sections 3.1 and 3.2 are available at: [www.newtonma.gov/purchasing](http://www.newtonma.gov/purchasing).

## ARTICLE 4 - PREPARATION AND SUBMISSION OF BIDS

- 4.1 Bids shall be submitted on the "Bid Form #24-15," attached.
- 4.2 All entries on the Bid Form shall be made by typewriter or in ink.
- 4.3 Where so indicated on the Bid Form, sums shall be expressed in both words and figures. Where there is a discrepancy between the bid sum expressed in words and the bid sum expressed in figures, the words shall control.
- 4.4 Bid Deposits shall be submitted in the amount specified in the IFB. They shall be made payable to the City and shall be either in the form of cash, certified check, treasurer's or cashier's check issued by a responsible bank or trust company, or a bid bond issued by a surety licensed to do business in the Commonwealth of Massachusetts; and shall be conditioned upon the faithful performance by the principal of the agreements contained in the bid. Bidders are reminded that the bid deposit covers the City for damages when a bidder withdraws its bid after the bid submission date. **Be advised that to the extent permitted by the law the City will retain all bid deposits for withdrawn bids.**

Bid deposits of the three (3) lowest responsible and eligible Bidders shall be retained until the execution and delivery of the City-Contractor agreement.

- 4.5 The Bid, including the bid deposit shall be enclosed in a sealed envelope with the following plainly marked on the outside:

- \* GENERAL BID FOR: **#24-15**
- \* NAME OF PROJECT: **Annual Exterior and Interior Door Repairs and Replacement Services**
- \* BIDDER'S NAME, BUSINESS ADDRESS, AND PHONE NUMBER

- 4.6 Date and time for receipt of bids is set forth in the Invitation for Bids.
- 4.7 Timely delivery of a bid at the location designated shall be the full responsibility of the Bidder. In the event that Newton City Hall is closed on the date or at the time that bids are due, the date and time for receipt of bids shall be on the next business day following that the Newton City Hall and the Purchasing Department are open.
- 4.8 Bids shall be submitted with one (1) **original** and one (1) **copy**.
- 4.9 Massachusetts law requires all employees who work on Massachusetts public works construction sites must have no Less than 10 hours of OSHA-approved safety and health training. See M.G.L. c.30, §39M( c), M.G.L. c.30, §39S(a)(1), M.G.L. c.149, §44E(2) & M.G.L. c.149, §44F(2).
1. This requirement will apply to any general bid or sub bid submitted.
  2. This law directs the Massachusetts Attorney General to restrain the award of construction contracts to any contractor who is in violation of this requirement and to restrain the performance of these contracts by non-complying contractors.
  3. The contractor and all subcontractors on this project must certify on the Bid Form compliance with the applicable requirement. Non-compliance with this law will disqualify the bidder.

## ARTICLE 5 - ALTERNATES

- 5.1 Each Bidder shall acknowledge alternates (if any) in Section C on the Bid Form.
- 5.2 In the event an alternate does not involve a change in the amount of the base bid, the Bidder shall so indicated by writing "No Change", or "N/C" or "0" in the space provided for that alternate.
- 5.3 Bidders shall enter on the Bid Form a single amount for each alternate which shall consist of the amount for work performed by the Contractor.
- 5.4 The low Bidder will be determined on the basis of the sum of the base bid and the accepted alternates.

## ARTICLE 6 - WITHDRAWAL OF BIDS

- 6.1 Any bid may be withdrawn prior to the time designated for receipt of bids on written or electronic request. Electronic withdrawal of bids must be confirmed over the Bidder's signature by written notice postmarked on or before the date and time set for receipt of bids.
- 6.2 Withdrawn bids may be resubmitted up to the time designated for the receipt of bids.
- 6.3 No bids may be withdrawn within sixty (60) days, Saturdays, Sundays and legal holidays excluded, after the opening of the bids.

## ARTICLE 7 - CONTRACT AWARD

- 7.1 The City is soliciting prices for items and hours of service work set forth in attached Itemized Bid Sheet 24-15 at pp. 24-25 below. It is the City's intent to award one (1) contract to the responsible and eligible bidder offering the lowest Proposed Contract Price in Item C of Form For General Bid 24-15 p.22 below. A contract will be awarded within sixty (60) days, Saturdays, Sundays, and legal holidays excluded, after the opening of bids.
- 7.2 The City reserves the right to waive minor informalities in or to reject any or all Bids if it be in the public interest to do so.
- 7.3 The City reserves the right to reject any bidder who has failed to pay any local taxes, fees, assessments, betterments, or any other municipal charge, unless the bidder has a pending abatement application or has entered into a payment agreement with the collector-treasurer.
- 7.4 As used herein, the term "lowest responsible and eligible Bidder" shall mean the Bidder (1) whose bid is the lowest of those bidders possessing the skill, ability and integrity necessary for the faithful performance of the work; (2) who has met all the requirements of the invitation for bids; (3) who shall certify that he is able to furnish labor that can work in harmony with all other elements of labor employed or to be employed in the work; (4) who, where the provisions of section eight B of chapter twenty-nine apply, shall have been determined to be qualified thereunder.
- 7.5 Subsequent to the award and within five (5) days, Saturday, Sundays and legal holidays excluded, after the prescribed forms are presented for signature, the successful Bidder shall execute and deliver to the City a contract in the form included in the Contract Documents in such number of counterparts as the City may require.
- 7.6 In the event that the City receives low bids in identical amount from two or more responsive and responsible Bidders, the City shall select the successful Bidder by a blind selection process chosen by the City such as flipping a coin or drawing names from a hat. The low Bidders who are under consideration will be invited to attend and observe the selection process.

## ARTICLE 8 - TAXES

- 8.1 The Bidder shall not include in this bid any tax imposed upon the sale or rental of tangible personal property in this Commonwealth, such as any and all building materials, supplies, services and equipment required to complete the work.
- 8.2 The City is exempt from payment of the Massachusetts Sales Tax, and the Bidder shall not include any sales tax on its bid. The City's exemption Number is E-046-001-404.

## ARTICLE 9 – PROPRIETARY SPECIFICATIONS

- 9.1 The City has used a proprietary specification to describe the supply listed in the specifications. Such specifications are permitted under M.G.L. c. 30, §39M(b), provided that the City state in writing that use of the proprietary specification is in its best interest and that it will accept an "equal" of the item specified. An item is considered equal if (i) it is at least equal in quality, durability, appearance, strength, and design; (ii) will perform the intended function at least equally; and (iii) conforms substantially, even with deviations, to the detailed requirements contained in the specifications. Bidders wishing to provide an equal item should do so with their bids. The City shall have the sole right to determine whether or not said item is equal.

9.2 The required determination and justification have been duly prepared, and a copy may be requested in accordance with the Massachusetts Public Records Law, M.G.L. c. 66, §10.

#### ARTICLE 10 –PAYMENT BOND ADJUSTMENTS

Inasmuch as bond amount, if any, is based on the City’s estimated quantities, the City agrees that the bond amount at the start of each option year shall be as follows:

1. For Year 2, the bond amounts shall be the lower of (i) the Year 1 bond amount or (ii) 200% of the amount of work done under the contract in Year 1; and

2. For Year 3, the bond amounts shall be the lower of (i) the Year 1 bond amount or (ii) 200% of the average of the work done under the contract in Years 1 and 2

provided, however, that bond amount shall always be 50% of the work performed under the Contract.

**END OF SECTION**



**CITY OF NEWTON**  
**GENERAL CONDITIONS OF THE CONTRACT FOR CONSTRUCTION**

**1.0 DEFINITIONS**

**1.1 THE CONTRACT DOCUMENTS**

The term "Contract Documents" sometimes also referred to as the "Contract", means the contract entered into between the City of Newton (hereinafter "City") and the Contractor. It includes the Invitation for Bid, General Bid Form, Contract Form, these General Conditions of the Contract, Supplements and Amendments to the General Conditions (if any), Contract Specifications, Drawings, all addenda issued prior to execution of the contract, the Bid Bond, the Labor and Material Payment Bond, or other assurances of completion, the applicable wage rate determinations, and other documents listed in the Agreement and modifications issued after execution of the contract.

**1.2 THE WORK**

The term "Work", sometimes also referred to as the "Project", means the construction and services required by the Contract Documents, whether completed or partially completed, and includes all other labor, materials, equipment, and services provided or to be provided by the Contractor to fulfill the Contractor's obligation.

**1.3 OWNER**

The term "Owner" is the City of Newton.

**1.4 CONTRACT OFFICER**

The term "Contract Officer" means the person appointed by the Owner to administer the terms of the Contract between the Owner and the Contractor, who is also empowered to take certain actions under this Agreement.

**1.5 CONTRACTOR**

1.5.1 The Contractor, sometimes referred to as the General Contractor, is the person or entity identified as such throughout the Contract Documents as if singular in number. The term Contractor means the Contractor or its authorized representative.

1.5.2 The Contractor shall supervise and direct the Work, using the Contractor's best skill and attention. The Contractor shall be solely responsible for and have control over construction means, methods, techniques, sequences and procedures, and for coordinating all portions of the Work under the Contract.

**1.6 SUBSTANTIAL COMPLETION**

The term "Substantial Completion" means the value of the work remaining to be performed by the Contractor is, in the estimate of the awarding authority, less than one percent (1%) of the original contract price.

**2.0 CONTRACT ADMINISTRATION**

**2.1 PRE-CONSTRUCTION CONFERENCE**

2.1.1 Prior to commencement of the Work, the Contractor shall meet in conference with representatives of the Owner regarding the Owner's requirements under the Contract for administration of the quality assurance program, safety program, labor provisions, the schedule of work, and other Contract procedures.

2.1.2 The Contractor shall begin work upon receipt of a written Notice to Proceed from the Contract Officer or designee. The Contractor shall not begin work prior to receiving such notice.

## **2.2 CONTRACT PERIOD**

The Contractor shall complete all work required under this contract within the timeframe specified elsewhere in this document, or within the time schedule established in the notice to proceed issued by the Contracting Officer.

## **2.3 REJECTION OF DEFECTIVE MATERIALS AND WORK**

The Owner's inspection of the Work shall not relieve the Contractor of any of its responsibilities to fulfill the Contract obligations, and defective work shall be corrected without cost to the Owner. Unsuitable work may be rejected by the Owner, notwithstanding that such work and materials have been previously overlooked or misjudged by the Owner and accepted for payment. If the Work or any part thereof shall be found defective at any time before the final acceptance of the whole Work, the Contractor shall forthwith correct such defect in a manner satisfactory to the Owner, and if any material brought upon the site for use in the Work, or selected for the same, shall be rejected by the Owner as unsuitable or not in conformity with the Contract requirements, the Contractor shall forthwith remove such materials from the vicinity of the Work.

## **2.4 CHANGES**

2.4.1 All changes in the work including any increase, decrease, or other equitable adjustment in the Contract price or in the time for performing the Contract, shall be authorized in writing by the Owner and/or Contract Officer prior to commencement.

2.4.2 For work performed by a Sub-Contractor, the cost to the Owner shall be the net cost to the Sub-Contractor plus an allowance for overhead and profit not to exceed ten percent (10%) for the Sub-Contractor's overhead and profit, plus an allowance not to exceed five percent (5%) for the General Contractor's Overhead and profit on Sub-Contractor's work.

2.4.3 For work performed by the General Contractor, the cost to the Owner shall be the net cost to the Contractor plus an allowance for overhead and profit not to exceed fifteen percent (15%) of the net cost.

## **2.5 CONTRACT PRICE**

The Contract Price is stated in the Contract Form, and including authorized adjustments, is the total amount payable by the Owner to the Contractor for performance of the Work under the Contract Documents.

## **2.6 APPLICATIONS FOR PAYMENT**

2.6.1 Once each month, on a date established by the Owner at the beginning of the Work, the Contractor shall deliver to the Owner an itemized Application for Payment, supported by such data substantiating the Contractor's right to payment as the Owner may require, and reflecting a minimum of 5% retainage until the final acceptance and payment by the Owner.

2.6.2 The Owner shall make payment to the Contractor within 30 days of receipt of said application, less any applicable retainage.

2.6.3 The Owner may make changes in any application for payment submitted by the Contractor for:

- i. Retention based on the value of its claims against the Contractor,
- ii. Retention of 5% of the approved amount of the Application for Payment.

## **2.7 FINAL PAYMENT**

The acceptance by the Contractor of the last payment due under this Contract or the execution of the Final Certificate of Completion, shall operate as a release to the Owner from all claims and liability related to this Contract.

## **2.8 GUARANTY AND WARRANTY**

### **2.8.1 WARRANTY**

The Contractor warrants to the Owner that materials and equipment furnished under the Contract will be of good quality and new unless otherwise required or permitted by the Contract Documents, that the Work will be free from defects not inherent in the quality required or permitted, and that the Work will conform with the requirements of the Contract Documents. Work not conforming to these requirements, including substitutions not properly approved and authorized, may be considered defective. If required by the Owner, the Contractor shall furnish satisfactory evidence as to the kind and quality of materials and equipment.

2.8.2 GENERAL GUARANTY

If at any time during the period of one (1) year from the date of Substantial Completion of the Work to be performed under this Contract, any part of the Work shall, in the reasonable determination of the Owner, require replacing or repairing due to the fact that it is broken, defective, or otherwise does not conform to the Contract Documents, the Owner will notify the Contractor to make the required repairs or replacement. If the Contractor shall neglect to commence such repairs or replacement to the satisfaction of the Owner within ten (10) days from the date of giving or mailing such notice, then the Owner may employ other persons to make the same. The Contractor agrees, upon demand, to pay to the Owner all amounts which the Owner expends for such repairs or replacements. During this one year guarantee period any corrective work shall be performed in accordance with the applicable terms of this Contract. For items of work completed after use and occupancy has been taken, the one year guarantee shall commence at the time the Owner accepts such items. This one year guarantee shall not limit any express guaranty or warranty provided elsewhere in the Contract.

2.9 INSURANCE REQUIREMENTS

2.9.1 The Contractor shall provide insurance coverage as listed below. This insurance shall be provided at the Contractor's expense and shall be in full force and effect during the full term of this Contract.

WORKER'S COMPENSATION

Worker's Compensation: Per M.G.L. c.. 149, s. 34 and c.. 152 as amended.

COMMERCIAL GENERAL LIABILITY

Personal Injury	\$500,000 each occurrence \$1,000,000 aggregate
Property Damage	\$500,000 each occurrence \$1,000,000 aggregate

VEHICLE LIABILITY

Personal Injury	\$500,000 each person \$1,000,000 aggregate
Property Damage	\$300,000 each occurrence \$500,000 aggregate

2.10 OWNER AS CO-INSURED

The Owner shall be named as additional insureds on the Contractor's Liability Policies.

2.11 CERTIFICATES OF INSURANCE, POLICIES

- i. The Contractor shall not commence the work until proof of compliance with this Section 2.9 has been furnished to the Owner by submitting one copy of a properly endorsed insurance certificate issued by a company authorized to write insurance in the Commonwealth. This certificate shall indicate that the contractual liability coverage is in force.
- ii. The Contractor shall file the original and one certified copy of all policies with the Owner within fifteen (15) days after contract award. If the Owner is damaged by the Contractor's failure to maintain such insurance and to so notify the Owner, then the Contractor shall be responsible for all reasonable costs attributable thereto.

2.12 CANCELLATION

Cancellation of any insurance required by this contract, whether by the insurer or the insured, shall not be valid unless written notice thereof is given by the party proposing cancellation to the other party and Owner at least thirty days prior to the effective date thereof, which shall be expressed in said notice.

2.13 INDEMNIFICATION

The Contractor shall take all responsibility for the Work and take all precautions for preventing injuries to persons and property in or about the Work; shall bear all losses resulting to or on account of the amount or character of the Work. The Contractor shall pay or cause payment to be made for all labor performed or furnished and for all materials used or employed in carrying out this Contract.

The Contractor shall assume the defense of, and indemnify and save harmless the Owner, and the Owner's officers and agents from all claims relating to labor performed or furnished and materials used or employed for the Work; to inventions, patents and patent rights used in and in doing the Work unless such patent infringement is due to a product or process specified by the Owner; to injuries to any person or corporation received or sustained by or from the Contractor and any employees, and subcontractors and employees, in doing the work, or in consequence of any improper materials, implements or labor used or employed therein; and to any act, omission or neglect of the Contractor and any employees therein.

## **2.14 BONDS**

The Contractor shall provide the Owner with a performance and with a payment or labor and materials bond in the form provided by the Owner, executed by a surety company licensed by the Commonwealth of Massachusetts' Division of Insurance. Such bond shall be in an amount equal to at least one half of the Contract price unless otherwise stated in the Contract Documents. All bonds shall be accompanied by a current power of attorney.

## **2.15 TERMINATION**

### **2.15.1 TERMINATION FOR CAUSE**

- i. The Owner may terminate this contract for cause if it determines that any of the following circumstances have occurred:
  - a. The Contractor is adjudged bankrupt or has made a general assignment for the benefit of its creditors.
  - b. A receiver has been appointed of the Contractor's property.
  - c. All or a part of the Work has been abandoned.
  - d. The Contractor has sublet or assigned all or any portion of the Work, the Contract, or claims thereunder, without the prior written consent of the Owner, except as provided in the Contract.
  - e. The Owner has determined that the rate of progress required on the project is not being met.
  - f. The Contractor has substantially violated any provisions of this Contract.
- ii. The Owner may complete the Work, or any part thereof, and charge its expense of so completing the Work or part thereof, to the Contractor.
- iii. The Owner may take possession of and use any materials, machinery, implements and tools found upon the site of said Work. The Owner shall not be liable for any depreciation, loss or damage to said materials, machinery, implements or tools during said use and the Contractor shall be solely responsible for their removal from the Project site after the Owner has no further use for them.

### **2.15.2 TERMINATION - NO FAULT**

- i. In the event that this Contract is terminated by the Owner, prior to the completion of construction and termination is not based on a reason listed in Paragraph 2.12.1, the Contractor shall be compensated for its costs incurred on the Project, including reasonable costs of de-mobilization, covering the period of time between the last approved application for payment and the date of termination.
- ii. Payment by the Owner pursuant to Section 2.7 shall be considered to fully compensate the Contractor for all claims and expenses and those of any consultants, subcontractors, and suppliers, directly or indirectly attributable to the termination, including any claims for lost profits.

## **2.16 PERMITS, FEES, AND NOTICES**

- 2.16.1 The Contractor shall secure and the Owner shall pay for the building permit, if required. The Contractor shall coordinate all efforts required to obtain this permit. All other permits and governmental fees, licenses, and inspections necessary for proper execution and completion of the Work shall be secured and paid for by the Contractor.
- 2.16.2 The Contractor shall comply with and give notices required by laws, ordinances rules, regulations, and lawful orders of public authorities bearing on performance of the Work.
- 2.16.3 If the Contractor performs Work that it knows or reasonably should know is contrary to laws, statutes, ordinances, building codes, and rules and regulations without such notice to the Owner, the Contractor shall assume full responsibility for such Work and shall bear the attributable costs.

## **2.17 SAFETY REQUIREMENTS**

The Contractor shall comply with all Federal, State, and local safety laws and regulations applicable to the Work performed under this Contract.

## **2.18 TEMPORARY HEATING**

Not required

## **2.19 AVAILABILITY AND USE OF UTILITY SERVICES**

2.19.1 The City shall make all reasonably required amounts of utilities available to the Contractor from existing outlets and supplies, as specified in the Contract. Unless otherwise provided in the Contract, the amount of each utility service consumed shall be charged to or paid for by the Contractor at prevailing rates charged to the City or, where the utility is produced by the City, at reasonable rates determined by the Contracting Officer. The Contractor shall carefully conserve any utilities furnished without charge.

## **2.20 DISPUTES**

2.20.1 "Claim," as used in this section, means a written demand or written assertion by one of the contracting parties seeking, as a matter of right, the payment of money in a sum certain, the adjustment or interpretation of contract terms, or other relief arising under or relating to the contract. A claim arising under the Contract, unlike a claim relating to the Contract, is a claim that can be resolved under a Contract clause that provides for the relief sought by the claimant. A voucher, invoice, or other routine request for payment that is not in dispute when submitted is not a claim. The submission may be converted to a claim by complying with the requirements of this section, if it is disputed either as to liability or amount or is not acted upon in a reasonable time.

2.20.2 All disputes arising under or relating to this Contract, including any claims for damages for the alleged breach thereof which are not disposed of by agreement, shall be resolved under this section.

2.20.3 All claims by the Contractor shall be made in writing and submitted to the Contract Officer for a written decision. A claim by the City against the Contractor shall be subject to a written decision by the Contract Officer.

2.20.4 The Contract Officer shall, within thirty (30) days after receipt of the request, decide the claim or notify the Contractor of the date by which the decision will be made.

2.20.5 The Contract Officer's decision shall be final unless the Contractor (1) appeals in writing to a higher level in the City, (2) refers the appeal to an independent mediator or arbitrator, or (3) files suit in a court of competent jurisdiction. Such appeal must be made within thirty (30) days after receipt of the Contract Officer's decision.

2.20.6 The Contractor shall proceed diligently with performance of this Contract and/or any authorized change thereof, pending final resolution of any request for relief, claim, appeal, or action arising under or relating to the Contract and/or any authorized change thereof, and comply with any decision of the Contract Officer.

## **2.21 LIQUIDATED DAMAGES**

2.21.1 If the Contractor fails to complete the Work within the time specified in the contract, or any extension thereof, the Contractor shall pay to the City as liquidated damages, the sum of \$250.00 for each day of delay. Completion dates are specified in the Contract for separate phases of the work, and the amount of liquidated damages shall be assessed on each and every phase which is delayed. In the context of this paragraph, "delay" means failure to complete the work as specified in these documents prior to the duration of the work. To the extent that the Contractor's delay or nonperformance is excused under another section in this Contract, liquidated damages shall not be due the City. The Contractor remains liable for damages caused other than by delay.

2.21.2 If the City terminates the Contractor's right to proceed pursuant to section 2.12.1, the resulting damage will consist of liquidated damages until such reasonable time as may be required for final completion of the Work together with any increased costs to the City in completing the Work.

2.21.3 If the City does not terminate the Contractor's right to proceed, the resulting damage will consist of liquidated damages until the Work is completed or accepted.

### **3.0 SALES TAX EXEMPTION AND OTHER TAXES**

3.0.1 To the extent that materials and supplies are used or incorporated in the performance of this Contract, the Contractor is considered an exempt purchaser under the Massachusetts Sales Act, Chapter 14 of the Acts of 1966.

3.0.2 The Contractor shall be responsible for paying all other taxes and tariffs of any sort, related to the Work.

### **3.1 PROHIBITION AGAINST LIENS**

The Contractor is prohibited from placing a lien on the City's property. This prohibition shall apply to all subcontractors at any tier and all materials suppliers.

### **3.2 ORDER OF PRECEDENCE**

In the event of a conflict between these General Conditions and the Specifications, the General Conditions shall prevail. In the event of a conflict between the Contract and any applicable state or local law or regulation, the state or local law or regulation shall prevail; provided that such state or local law or regulation does not conflict with, or is less restrictive than applicable federal law, regulation, or Executive Order. In the event of such a conflict, applicable federal law, regulation, and Executive Order shall prevail.

### **3.3 EXAMINATION AND RETENTION OF CONTRACTOR'S RECORDS**

The City of Newton shall, until three (3) years after final payment under this Contract, have access to and the right to examine any of the Contractor's directly pertinent books, documents, papers, or other records involving transactions related to this Contract for the purpose of making audit, examination, excerpts, and/or transcriptions.

### **3.4 WORKING HOURS**

The contractor shall follow time restrictions imposed on construction activities by the City's noise ordinance, Section 20-13, of the City of Newton Revised Ordinances, and shall, as applicable, apply for permits for exemptions when work will exceed time restrictions. Work may be performed during school hours except for testing days. Testing dates are to be coordinated with the Owner.

## **END OF GENERAL CONDITIONS**

**PUBLIC BUILDINGS**  
**SPECIFICATIONS**  
**FOR**  
**EXTERIOR and INTERIOR DOOR REPAIRS AND REPLACEMENT**

**FY-24**

**I. SCOPE OF WORK**

Furnish all the labor, materials, tools, equipment and supervision necessary to remove and dispose existing exterior doors and install, complete as described in this document, new exterior doors at the schools and other various city buildings as directed by the Public Buildings Department during the **period January 1, 2024 through December 31, 2024 with the option, at the City's sole discretion, to renew for two additional one year terms with no change in the contract price and terms and conditions.** The exercise of each option to renew shall be subject to appropriation of funding therefor.

**II. GENERAL CONDITIONS**

**A. QUALIFICATIONS**

Use only personnel who are thoroughly trained and experienced in the skills required by this work and who are completely familiar with the manufacturer's recommendations for preparation and application of the products specified. No allowance will be made for a lack of skill on the part of the workers.

**B. PRODUCTS**

See Product Schedule on sheet 98-020-6

PRODUCT MANUFACTURERS ARE LISTED FOR REFERENCE STANDARD ONLY. OTHER MANUFACTURERS OF EQUIVALENT PRODUCTS SHALL BE SUBMITTED FOR ENGINEERING APPROVAL. PROOF OF EQUIVALENCY MAY BE REQUIRED BY THE PUBLIC BUILDINGS DEPARTMENT. COSTS OF SUCH PROOFS SHALL BE BORNE BY THE CONTRACTOR.

**C. CLARIFICATION of NOTES on SD-308 & SD-309**

1. ITEM # 11: The Contractor shall provide, where none exists, armored cable, up to 6 ft. long, secured to the adjacent surfaces and a 4" square electrical box, surface mounted.
  - A. Existing security switches and hardware shall be re-used.
2. ITEM # 9: The nylon brush weather-stripping is to be supplied and installed all around the opening.
3. ITEM # 14: The security thru bolts shall be installed 2 each on the long sides and 1 each on the short sides (TOTAL 6 pieces).

### III. BIDDING

- A. All bids shall be submitted in the format designated on Drawings SD-308 and SD-309. A unit price shall be bid for the supply and installation of a single door falling within each of the size ranges indicated, including all of the installation components shown on the drawings and Bid Form.
- B. The “WORK FACTOR” is supplied for informational purposes and is an approximate percentage estimate of the amount of work that could be expected to be done within a particular range of door size or accessory item.  

EXAMPLE: (See Dwg. # SD—308) Doors that fall, in size, greater than 3'-2” wide and up to and including 3'-6” wide X 7'-2” high will probably amount to about 15% of all doors installed.
- C. Bids will extend the unit prices using the estimated quantities shown on the Bid Form. The quantities shown are estimates only to be used for bid comparison and award. The City will authorize and the contractor will be paid for only that quantity of work actually required during the contract term.
- D. Bidders may insert prices on Drawings SD-308 and SD-309, however all prices must be transferred to the Bid Form and all calculations performed as indicated thereon.
- E. Repair Hourly Rates
- E. The bid will be awarded to the responsive and responsible bidder with the lowest combined totals number.

**A UNIT PRICE MUST BE QUOTED FOR EACH ITEM. MISSING PRICES WILL RESULT IN DISQUALIFICATION OF YOUR BID**

### IV. EXECUTION

#### A. SUBMITTALS

Catalog “cuts” and/or product manuals for ALL products to be used on this contract shall be submitted to the PUBLIC BUILDINGS DEPARTMENT for confirmation and/or approval NO LATER THAN TEN (10) CALENDAR DAYS after ‘DATE OF NOTIFICATION’ that the bid has been awarded. Notification of such award shall be made by the PUBLIC BUILDINGS DEPARTMENT. NO contracts will be valid until all product(s) have been approved by the PUBLIC BUILDINGS DEPARTMENT.

- 1. After this time (10 Calendar days after “DATE OF NOTIFICATION”), if no alternate product(s) have been submitted for approval, the PUBLIC BUILDINGS DEPARTMENT will assume and accept that **ONLY** the product(s) specified as “REFERENCE STANDARD” are to be used. These products are automatically approved.
- 2. The contractor shall provide the PUBLIC BUILDINGS DEPARTMENT with a facsimile (FAX) number where work notifications can be received.

B. MATERIAL SAFETY DATA SHEETS shall be submitted to the PUBLIC BUILDINGS DEPARTMENT FOR **ALL** products to be used under this contract.

#### C. SAFETY

Take necessary precautions for the safety of employees on the work, and comply with applicable OSHA provisions to prevent accidents or injury to persons on, about, or adjacent to the premises where the work is being performed. Erect and properly maintain, at all times, as required by the conditions and progress of the work, necessary safeguards for the workmen and the public, and post danger signs warning against the hazards created by such features of construction as protruding hoists, scaffolding, falling material, hazardous and/or toxic fumes, vapors and/or materials.



#### D. WORK NOTIFICATION

The PUBLIC BUILDINGS DEPARTMENT will transmit a plan showing the location(s), type (Single or Double), number of windows (if any) and any other pertinent factors of the door(s) to be replaced.

#### E. WORK AT SITE

1. The contractor is expected to remove the existing door(s), prepare the existing frame (Including patching the frame to accommodate the continuous gear hinge(s), remove all existing hardware and generally ready the opening for the NEW installation.
  - A. THE CONTRACTOR IS RESPONSIBLE FOR THE SECURITY OF THE BUILDING THROUGH THIS OPENING(S) AT ALL TIMES THAT THIS OPENING(S) IS UNSECURED.
2. Where cylinder locks are required, a construction core will be provided by the contractor. The CITY OF NEWTON will provide the final core.
3. The contractor is expected to install the door(s), complete with all items shown on drawing # SD-308 and/or SD-309.
  - A. Additional items may be added and/or deleted for a specific installation.
    1. Costs and/or credits will be negotiated with the PUBLIC BUILDINGS DEPARTMENT at the time of WORK NOTIFICATION.
  - B. All doors are expected to be installed within SIX (6) WEEKS of WORK NOTIFICATION.

#### F. DAMAGE

Any damage to the property of the CITY OF NEWTON shall be repaired within twenty- four (24) hours of the acceptance of an approved plan by the PUBLIC BUILDINGS DEPARTMENT.

#### G. PUNCHLIST

A “punch list”, if necessary, for the full completion of the work order will be issued by the PUBLIC BUILDINGS DEPARTMENT.

1. FINAL ACCEPTANCE will be determined by the PUBLIC BUILDINGS DEPARTMENT.

#### H. CLEAN-UP

1. Remove all materials, tools, and equipment used in the work and leave the premises in a neat and orderly condition.
2. Do NOT use the schools’ and/or the City’s dumpsters and/or trash barrels for disposal of used containers and/or equipment.
3. Dispose of empty or used containers, equipment, removed items, and debris arising from the work, properly, not within the City.

#### I. INVOICING

- A. Invoices (one for each building) must be mailed in triplicate within three (3) days after each job has been completed to:
- B. Public Buildings Department  
52 Elliot Street  
Newton Highlands, MA 02461  
or email invoices to:

Stephanie Tocci, Business Manager: [stocci@newtonma.gov](mailto:stocci@newtonma.gov)  
Art Cabral, Project Specialist: [acabral@newtonma.gov](mailto:acabral@newtonma.gov)

NOTE: The original invoice must have a copy of the signed work order attached. See paragraph III-D above.

- B. Each invoice must reflect the Public Buildings Department Control Number assigned to that job. The control number consists of six digits (e.g. 123456, 456789 etc.)
- C. Each invoice will be based on time and materials. Labor charges will be reflected separately and will be billed in accordance with the applicable contract hourly rate. Material used will be reflected on the invoice by quantity and unit costs including applicable 10% surcharge.
- D. Labor Charges: All labor charges will be based solely on the actual time expended to perform the required work. Labor charges shall not be based on a “portal to portal” operation. The bid labor charge shall include all transportation costs and trucking costs.

1. Standard Rate:

The contractor shall perform routine service, repairs or installation as described by the City during the term of this contract. The Contractor shall be compensated for such repairs at the Standard Rate shown on the bid form.

The Standard Rate shall apply to any repair that does not meet the criteria for Premium Rate.

2. Premium Rate:

The Premium Rate shall apply to any repair which the city requests the Contractor to commence between 5:00 PM and 8:00 AM Monday through Saturday, and anytime on Sunday, or any repair which the City requires the Contractor to commence within 1 hour or less of notification.

The Contractor shall be compensated for Premium Rate repairs at the Premium Rate shown on the bid form. Under no circumstances shall any work performed by the Contractor be compensated at the Premium Rate unless the City has given prior authorization to treat the work as Premium Rate repair.

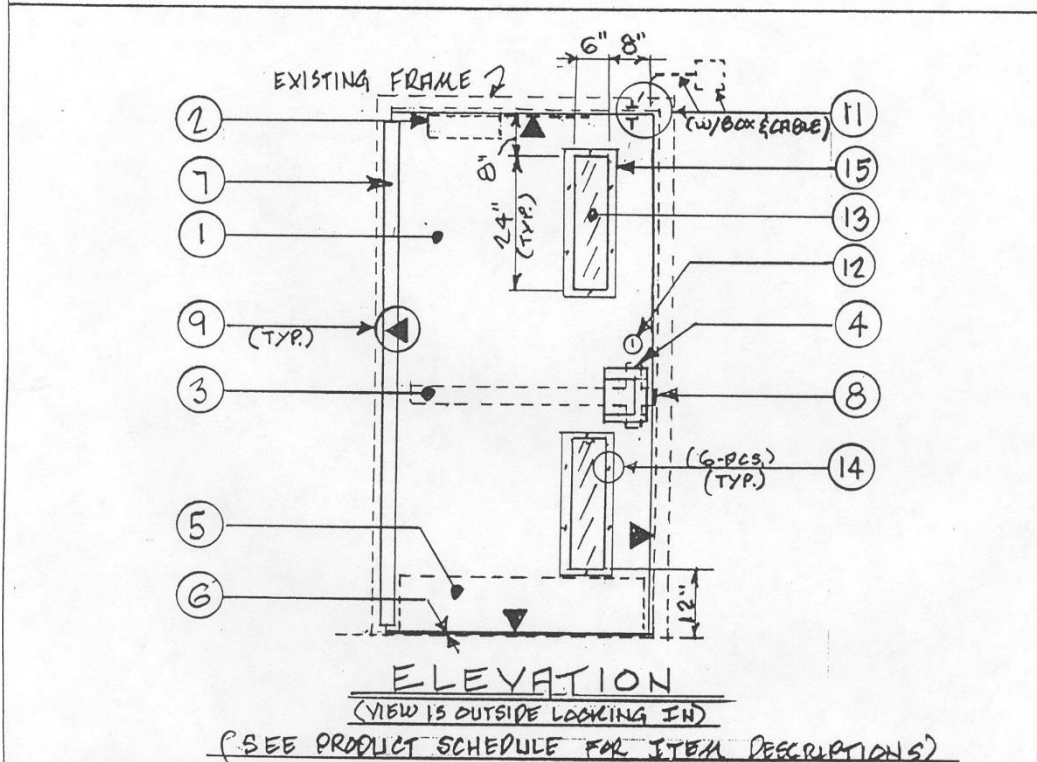
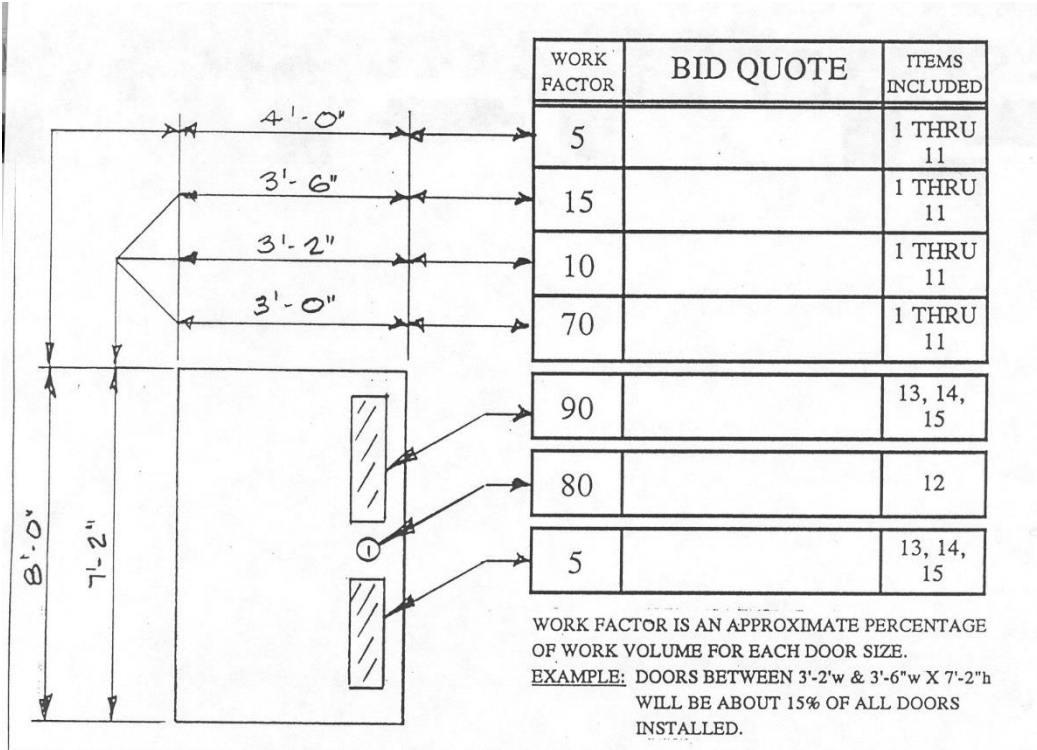
J. ESTIMATES:

- 1. A “Not to Exceed” Time and Materials cost is requested in all estimates. This cost is to include moving of all furniture, removal of any carpet or tile, preparation of the floor and installation of new carpet.
- 2. Invoicing shall be billed showing actual time and materials on the job but shall not exceed the Estimated Cost approved by the Public Buildings Department without the **PRIOR** approval of the Public Buildings Department.

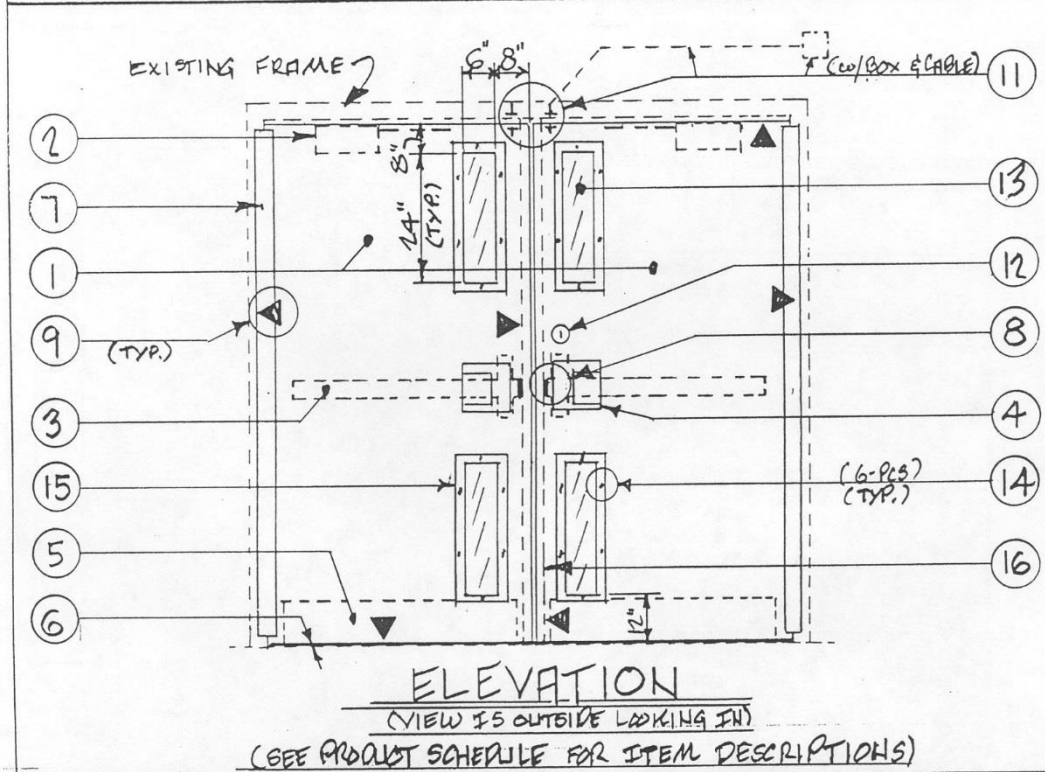
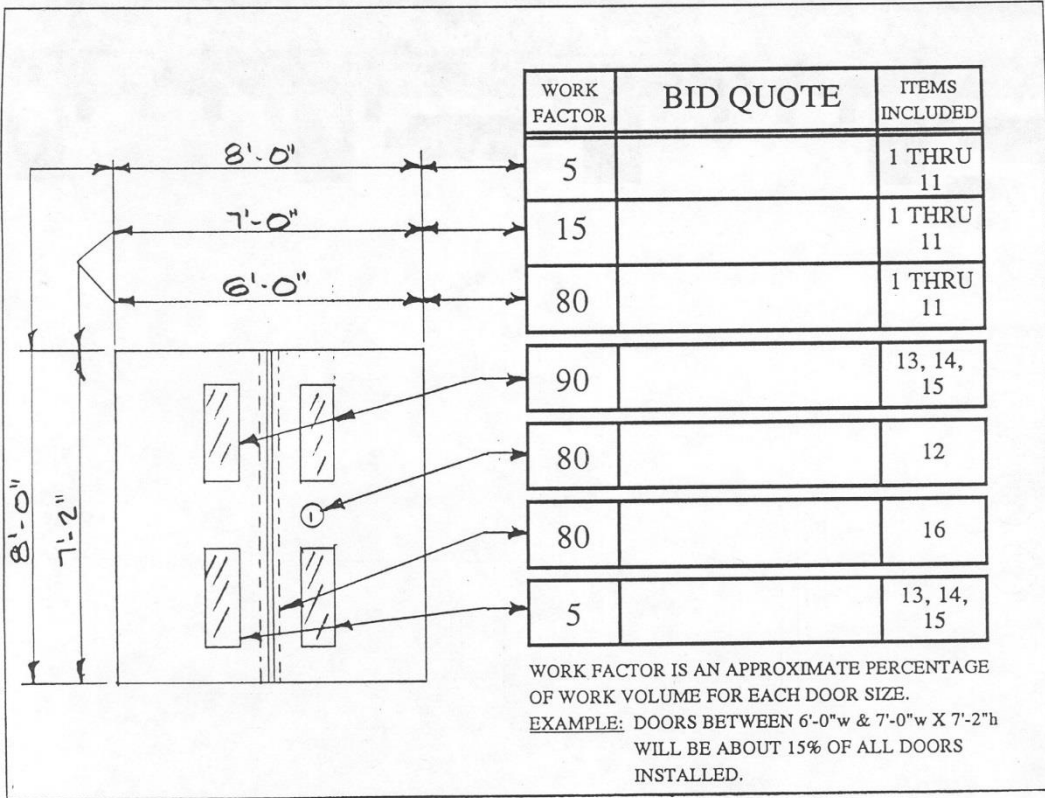
## PRODUCT SCHEDULE

ITEM	DESCRIPTION	CATALOG#	MANUFACTURER
1	DOOR LEAF	SL-17 (FRP)	SPECIAL LITE DECATUR, MI
2	CLOSER	4110H SERIES	LCN INC. PRINCETON, IL
3	(w / Stop Limit & Holder) EXIT DEVICE	1108CD	PRECISION HARDWARE INC. ROMULUS, MI
4	DOOR PULL	SL-82	SPECIAL-LITE DECATUR, MI
5	KICK PLATE	10" HIGH X FULL WIDTH (16 Ga. S.S.)	GENERIC
6	THRESHOLD	P.G. S472A	REESE ENTERPRISES INC. ROSEMONT, MN
7	HINGE	SL-11HD	SPECIAL-LITE DECATUR, MI
8	STRIKE PLATE	810-84	PRECISION HARDWARE INC. ROMULUS, MI
9	WEATHER STRIPPING	ALUMINUM FRAME (w/nylon brush)	REESE ENTERPRISES INC. ROSEMONT, MN
10	Tamper Resistant Fasteners	PIN HEAD TORX	TAMPERPROOF SCREW INC. HICKSVILLE, NY
11	MAGNETIC SWITCH (INCLUDES 4" ELECTRICAL BOX & 6" ARMORED CABLE)	TYPE 2505A	SENTROL INC. TUALATIN, OR
12	LOCK	RIM CYLINDER	BEST LOCK CORP. INDIANAPOLIS, IN
13	SAFETY PLATE GLASS	STANDARD LAMINATED ¼" NOMINAL THICKNESS	GUARDIAN INDUSTRIES INC. CARLETON, MN
14	WIDOW FRAME SECURITY	CENTER PIN TORX SEX BOLTS	SPECIAL-LITE DECATUR, MI
15	WINDOW FRAME	FL SERIES	SPECIAL-LITE DECATUR, MI
16	REMOVABLE ASTRAGAL	811 SERIES	PRECISION HARDWARE INC. ROMULUS, MI

# EXTERIOR DOOR PRODUCT SCHEDULE 98-020-6



PROJ #	BY	DATE	SINGLE LEAF DOOR	DWG. #	REV
00-001	ECD	MAR 28 1997	EXTERIOR DOOR SERVICE CONTRACT	SD-308	0



PROJ #	BY	DATE	DOUBLE LEAF DOORS	DWG. #	REV
00-001	ECD	MAR 28 1997	EXTERIOR DOOR SERVICE CONTRACT	SD-309	0

**CITY OF NEWTON**

**ANNUAL EXTERIOR and INTERIOR DOOR REPAIRS AND REPLACEMENT SERVICE:  
BID FORM FOR GENERAL BID #24-15**

**TO THE AWARDING AUTHORITY:**

**A.** The undersigned proposes to furnish all labor and materials required for Exterior and Interior Door Repairs and Replacement in Newton, Massachusetts in accordance with the accompanying plans and specifications prepared by the City of Newton for the contract price specified below, subject to additions and deductions according to the terms of the specifications.

**B.** This bid includes addenda number(s) \_\_\_\_\_, \_\_\_\_\_, \_\_\_\_\_, \_\_\_\_\_,

**C.** The Proposed Contract Price is:\*

\_\_\_\_\_

DOLLARS (\$ \_\_\_\_\_)

\*Contract price is the Grand Total Items 1-3 at p. 25 below.

COMPANY: \_\_\_\_\_

**D.** The undersigned has completed and submits herewith the following documents:

- Signed Bid Form, 2 pages
- Bidder's Qualifications and References Form, 2 pages
- Certificate of Non-Collusion, 1 page
- Certification of Tax Compliance, 1 page
- Certificate of Foreign Corporation, if applicable, 1 page
- Debarment Letter, 1 page
- IRS Form W-9, 1 page
- Business Category Information Form, 1 page
- Itemized Bid Sheets, 2 pages
- 5% Bid Surety

**E.** Prompt Payment Discounts. Bidders are encouraged to offer discounts in exchange for an expedited payment. Payments may be issued earlier than the general goal of within 30 days of receipt of the invoice only when in exchange for discounted prices. Discounts will not be considered in determining the lowest responsible bidder.

Prompt Payment Discount \_\_\_\_\_% \_\_\_\_\_ Days  
Prompt Payment Discount \_\_\_\_\_% \_\_\_\_\_ Days  
Prompt Payment Discount \_\_\_\_\_% \_\_\_\_\_ Days

**F.** The undersigned agrees that, if s/he is selected as general contractor, s/he will within five days, Saturdays, Sundays and legal holidays excluded, after presentation thereof by the awarding authority, execute a contract in accordance with the terms of this bid and furnish a labor and materials or payment bond, each of a surety company qualified to do business under the laws of the commonwealth and satisfactory to the awarding authority and each in the sum of the contract price, the premiums for which are to be paid by the general contractor and are included in the contract price.

The undersigned hereby certifies that s/he is able to furnish labor that can work in harmony with all other elements of labor employed or to be employed on the work and that s/he will comply fully with all laws and regulations applicable to awards made subject to section forty-four A of M.G.L. Chapter 30, s 39M.

The undersigned certifies that he is able to furnish labor that can work in harmony with all other elements of labor employed or to be employed in the work; (2) that all employees to be employed at the worksite will have successfully completed a course in construction safety and health approved by the United States Occupational Safety and Health Administration ("OSHA") that is at least 10 hours in duration at the time the employee begins work and who shall furnish documentation of successful completion of said course with the first certified payroll report for each employee; and (3) that all employees to be employed in the work subject to this bid have successfully completed a course in construction safety and health approved by the United States OSHA that is at least 10 hours in duration. The undersigned understands that any employee found on a worksite subject to this section without documentation of successful completion of a course in construction safety and health approved by the United States Occupational Safety and Health Administration that is at least 10 hours in duration shall be subject to immediate removal.

The undersigned further certifies under the penalties of perjury that this bid is in all respects bona fide, fair and made without collusion or fraud with any other person. As used in this subsection the word "person" shall mean any natural person, joint venture, partnership, corporation or other business or legal entity. The undersigned further certifies under penalty of perjury that the said undersigned is not presently debarred from doing public construction work in the Commonwealth under the provisions of section twenty-nine F of chapter twenty-nine, or any other applicable debarment provisions of any other chapter of the General Laws or any rule or regulation promulgated thereunder.

Date \_\_\_\_\_

\_\_\_\_\_  
(Name of General Bidder)

BY: \_\_\_\_\_  
(Signature)

\_\_\_\_\_  
(Printed Name and Title of Signatory)

\_\_\_\_\_  
(Business Address)

\_\_\_\_\_  
(City, State Zip)

\_\_\_\_\_/\_\_\_\_\_  
(Telephone) (FAX)

\_\_\_\_\_  
E-Mail

**NOTE:** If the bidder is a corporation, indicate state of incorporation under signature, and affix corporate seal; if a partnership, give full names and residential addresses of all partners; and if an individual, give residential address if different from business address.

**END OF SECTION**

**PUBLIC BUILDINGS MAINTENANCE SERVICE**

**ANNUAL EXTERIOR and INTERIOR DOOR REPAIRS AND REPLACEMENT SERVICE:**

**ITEMIZED BID SHEET #24-15**

Bidder submits the following itemized pricing for the Exterior Door Replacement Service as described in the Project Manual.

All quantities shown below are estimates only of the City’s requirements during the contract term. They are used to compare bids on an equal basis. Unit prices shall remain in effect throughout the term of the contract, regardless of whether the City uses more or less than the estimated materials and services. Regardless of whether or not the City use is greater or less than that estimated, the unit prices below shall apply. The City will direct the contractor to perform only that work which is actually required. The contractor will only be compensated only for that work which is actually performed. (Bond requirements may be adjusted in accordance with Article 10 of the IFB, above.)

- 1. Single Leaf Doors Installation & Materials  
(Refer to Drawings SD-308 for description of items to be included in Unit Prices)

<u>Height</u>	<u>Width</u>	<u>Unit Price</u>		<u>Est. Qty.</u>	<u>Total Price</u>
7’2” to 8’0”	3’6” to 4’0”	_____	X	10 =	_____
up to 7’2”	3’2” to 3’6”	_____	X	10 =	_____
up to 7’2”	3’0” to 3’2”	_____	X	10 =	_____
up to 7’2”	up to 3’0”	_____	X	20 =	_____
Upper Glass		_____	X	25 =	_____
Lock		_____	X	35 =	_____
Lower Glass		_____	X	35 =	_____

**SUB TOTAL ITEM 1**      \$ \_\_\_\_\_

- 2. Double Leaf Doors Installation & Materials  
(Refer to Drawings SD-309 for description of items to be included in Unit Prices)

<u>Height</u>	<u>Width</u>	<u>Unit Price</u>		<u>Est. Qty.</u>	<u>Total Price</u>
7’2” to 8’0”	7’0” TO 8’0”	_____	X	10 =	_____
up to 7’2”	6’0” TO 7’0”	_____	X	10 =	_____
up to 7’2”	up to 6’0”	_____	X	10 =	_____
Upper Glass (2 ea.)		_____	X	25 =	_____
Lock		_____	X	35 =	_____
Removable Astragal		_____	X	30 =	_____
Lower Glass (2 ea.)		_____	X	35 =	_____

**SUB TOTAL ITEM 2**      \$ \_\_\_\_\_



3. Repair Rates

Standard Rate\*\*\* \$/HR \_\_\_\_\_ X 500 HRS = \$ \_\_\_\_\_

Premium Rate\*\*\* \$/HR \_\_\_\_\_ X 40 HRS = \$ \_\_\_\_\_

Allowance for materials = \$ 10,000.00

**SUB TOTAL ITEM 3** \$ \_\_\_\_\_

GRAND TOTAL Items 1-3 \$ \_\_\_\_\_\*\*

**\*\* Bidder shall insert the Grand Total of all of items in Paragraph C of the Form for General Bid.**

**\*\*See p. 18.**

**END OF SECTION**

**CITY OF NEWTON**

**BIDDER'S QUALIFICATIONS AND REFERENCES FORM**

All questions must be answered, and the data given must be clear and comprehensive. Please type or print legibly. If necessary, add additional sheet for starred items. This information will be utilized by the City for purposes of determining bidder responsiveness and responsibility with regard to the requirements and specifications of the Contract.

- 1. FIRM NAME: \_\_\_\_\_
- 2. WHEN ORGANIZED: \_\_\_\_\_
- 3. INCORPORATED? \_\_\_\_\_ YES \_\_\_\_\_ NO DATE AND STATE OF INCORPORATION: \_\_\_\_\_
- 4. IS YOUR BUSINESS A **MBE**? \_\_\_\_\_ YES \_\_\_\_\_ NO **WBE**? \_\_\_\_\_ YES \_\_\_\_\_ NO or **MWBE**? \_\_\_\_\_ YES \_\_\_\_\_ NO
- \* 5. LIST ALL CONTRACTS CURRENTLY ON HAND, SHOWING CONTRACT AMOUNT AND ANTICIPATED DATE OF COMPLETION:  
\_\_\_\_\_  
\_\_\_\_\_  
\_\_\_\_\_  
\_\_\_\_\_
- \* 6. HAVE YOU EVER FAILED TO COMPLETE A CONTRACT AWARDED TO YOU?  
\_\_\_\_\_ YES \_\_\_\_\_ NO  
IF YES, WHERE AND WHY?  
\_\_\_\_\_  
\_\_\_\_\_
- \* 7. HAVE YOU EVER DEFAULTED ON A CONTRACT? \_\_\_\_\_ YES \_\_\_\_\_ NO  
IF YES, PROVIDE DETAILS.  
\_\_\_\_\_  
\_\_\_\_\_
- \* 8. LIST YOUR VEHICLES/EQUIPMENT AVAILABLE FOR THIS CONTRACT:  
\_\_\_\_\_  
\_\_\_\_\_  
\_\_\_\_\_  
\_\_\_\_\_  
\_\_\_\_\_
- \* 9. IN THE SPACES FOLLOWING, PROVIDE INFORMATION REGARDING CONTRACTS COMPLETED BY YOUR FIRM SIMILAR IN NATURE TO THE PROJECT BEING BID. A MINIMUM OF FOUR (4) CONTRACTS SHALL BE LISTED. PUBLICLY BID CONTRACTS ARE PREFERRED, BUT NOT MANDATORY.  
  
PROJECT NAME: \_\_\_\_\_  
OWNER: \_\_\_\_\_  
CITY/STATE: \_\_\_\_\_

DOLLAR AMOUNT: \$ \_\_\_\_\_ DATE COMPLETED: \_\_\_\_\_  
PUBLICLY BID? \_\_\_\_\_ YES \_\_\_\_\_ NO  
TYPE OF WORK?: \_\_\_\_\_  
CONTACT PERSON: \_\_\_\_\_ TELEPHONE #: (\_\_\_\_) \_\_\_\_\_  
CONTACT PERSON'S RELATION TO PROJECT?: \_\_\_\_\_  
(i.e., contract manager, purchasing agent, etc.)

PROJECT NAME: \_\_\_\_\_  
OWNER: \_\_\_\_\_  
CITY/STATE: \_\_\_\_\_  
DOLLAR AMOUNT: \$ \_\_\_\_\_ DATE COMPLETED: \_\_\_\_\_  
PUBLICLY BID? \_\_\_\_\_ YES \_\_\_\_\_ NO  
TYPE OF WORK?: \_\_\_\_\_  
CONTACT PERSON: \_\_\_\_\_ TELEPHONE #: (\_\_\_\_) \_\_\_\_\_  
CONTACT PERSON'S RELATION TO PROJECT?: \_\_\_\_\_  
(i.e., contract manager, purchasing agent, etc.)

PROJECT NAME: \_\_\_\_\_  
OWNER: \_\_\_\_\_  
CITY/STATE: \_\_\_\_\_  
DOLLAR AMOUNT: \$ \_\_\_\_\_ DATE COMPLETED: \_\_\_\_\_  
PUBLICLY BID? \_\_\_\_\_ YES \_\_\_\_\_ NO  
TYPE OF WORK?: \_\_\_\_\_  
CONTACT PERSON: \_\_\_\_\_ TELEPHONE #: (\_\_\_\_) \_\_\_\_\_  
CONTACT PERSON'S RELATION TO PROJECT?: \_\_\_\_\_  
(i.e., contract manager, purchasing agent, etc.)

PROJECT NAME: \_\_\_\_\_  
OWNER: \_\_\_\_\_  
CITY/STATE: \_\_\_\_\_  
DOLLAR AMOUNT: \$ \_\_\_\_\_ DATE COMPLETED: \_\_\_\_\_  
PUBLICLY BID? \_\_\_\_\_ YES \_\_\_\_\_ NO  
TYPE OF WORK?: \_\_\_\_\_  
CONTACT PERSON: \_\_\_\_\_ TELEPHONE #: (\_\_\_\_) \_\_\_\_\_  
CONTACT PERSON'S RELATION TO PROJECT?: \_\_\_\_\_  
(i.e., contract manager, purchasing agent, etc.)

10. The undersigned certifies that the information contained herein is complete and accurate and hereby authorizes and requests any person, firm, or corporation to furnish any information requested by the City in verification of the recitals comprising this statement of Bidder's qualifications and experience.

DATE: \_\_\_\_\_ BIDDER: \_\_\_\_\_

SIGNATURE: \_\_\_\_\_

PRINTED NAME: \_\_\_\_\_ TITLE: \_\_\_\_\_

**END OF SECTION**

## CERTIFICATE OF NON-COLLUSION

The undersigned certifies under penalties of perjury that this bid or proposal has been made and submitted in good faith and submitted in good faith and without collusion or fraud with any other person. As used in this certification, the word "person" shall mean any natural person, business, partnership, corporation, union, committee club, or other organization, entity, or group or individuals.

\_\_\_\_\_  
(Signature of individual)

\_\_\_\_\_  
Name of Business



## CERTIFICATE OF FOREIGN CORPORATION

The undersigned hereby certifies that it has been duly established, organized, or chartered as a corporation under the laws of:

---

(Jurisdiction)

The undersigned further certifies that it has complied with the requirements of M.G.L. c. 30, §39L (if applicable) and with the requirements of M.G.L. c. 156D, §15.03 relative to the registration and operation of foreign corporations within the Commonwealth of Massachusetts.

---

Name of person signing proposal

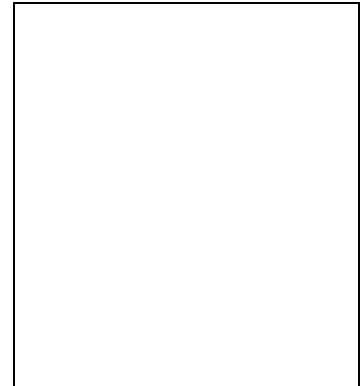
---

Signature of person signing proposal

---

Name of Business (Please Print or Type)

*Affix Corporate Seal here*



City of Newton



Mayor  
Ruthanne Fuller

**Purchasing Department**

Nicholas Read *Chief Procurement Officer*  
1000 Commonwealth Avenue  
Newton Centre, MA 02459-1449  
purchasing@newtonma.gov

Telephone  
(617) 796-1220  
Fax:  
(617) 796-1227  
TDD/TTY  
(617) 796-1089

Date

Vendor

Re: Debarment Letter for Invitation For Bid #24-15

As a potential vendor on the above contract, the City requires that you provide a debarment/suspension certification indicating that you are in compliance with the below Federal Executive Order. Certification can be done by completing and signing this form.

**Debarment:**

**Federal Executive Order (E.O.) 12549 “Debarment and Suspension“ requires that all contractors receiving individual awards, using federal funds, and all sub-recipients certify that the organization and its principals are not debarred, suspended, proposed for debarment, declared ineligible, or voluntarily excluded by any Federal department or agency from doing business with the Federal Government.**

I hereby certify under pains and penalties of perjury that neither I nor any principal(s) of the Company identified below is presently debarred, suspended, proposed for debarment, declared ineligible, or voluntarily excluded from participation in this transaction by any federal department or agency.

\_\_\_\_\_  
\_\_\_\_\_  
\_\_\_\_\_  
\_\_\_\_\_

(Name)

(Company)

(Address)

(Address)

PHONE \_\_\_\_\_ FAX \_\_\_\_\_

EMAIL \_\_\_\_\_

\_\_\_\_\_  
Signature

\_\_\_\_\_  
Date

If you have questions, please contact Nicholas Read, Chief Procurement Officer at (617) 796-1220.

## Request for Taxpayer Identification Number and Certification

**Give form to the  
 requester. Do not  
 send to the IRS.**

Print or type See Specific instructions on page 2.	Name (as shown on your income tax return)	
	Business name, if different from above	
	Check appropriate box: <input type="checkbox"/> Individual/Sole proprietor <input type="checkbox"/> Corporation <input type="checkbox"/> Partnership <input type="checkbox"/> Limited liability company. Enter the tax classification (D=disregarded entity, C=corporation, P=partnership) ▶ ..... <input checked="" type="checkbox"/> Exempt payee <input type="checkbox"/> Other (see instructions) ▶	
	Address (number, street, and apt. or suite no.)	Requester's name and address (optional)
	City, state, and ZIP code	
List account number(s) here (optional)		

**Part I Taxpayer Identification Number (TIN)**

Enter your TIN in the appropriate box. The TIN provided must match the name given on Line 1 to avoid backup withholding. For individuals, this is your social security number (SSN). However, for a resident alien, sole proprietor, or disregarded entity, see the Part I instructions on page 3. For other entities, it is your employer identification number (EIN). If you do not have a number, see *How to get a TIN* on page 3.

**Note.** If the account is in more than one name, see the chart on page 4 for guidelines on whose number to enter.

	Social security number
	or
	Employer identification number

**Part II Certification**

Under penalties of perjury, I certify that:

- The number shown on this form is my correct taxpayer identification number (or I am waiting for a number to be issued to me), and
- I am not subject to backup withholding because: (a) I am exempt from backup withholding, or (b) I have not been notified by the Internal Revenue Service (IRS) that I am subject to backup withholding as a result of a failure to report all interest or dividends, or (c) the IRS has notified me that I am no longer subject to backup withholding, and
- I am a U.S. citizen or other U.S. person (defined below).

**Certification instructions.** You must cross out item 2 above if you have been notified by the IRS that you are currently subject to backup withholding because you have failed to report all interest and dividends on your tax return. For real estate transactions, item 2 does not apply. For mortgage interest paid, acquisition or abandonment of secured property, cancellation of debt, contributions to an individual retirement arrangement (IRA), and generally, payments other than interest and dividends, you are not required to sign the Certification, but you must provide your correct TIN. See the instructions on page 4.

<b>Sign Here</b>	Signature of U.S. person ▶	Date ▶	Name
------------------	----------------------------	--------	------

**General Instructions**

Section references are to the Internal Revenue Code unless otherwise noted.

**Purpose of Form**

A person who is required to file an information return with the IRS must obtain your correct taxpayer identification number (TIN) to report, for example, income paid to you, real estate transactions, mortgage interest you paid, acquisition or abandonment of secured property, cancellation of debt, or contributions you made to an IRA.

Use Form W-9 only if you are a U.S. person (including a resident alien), to provide your correct TIN to the person requesting it (the requester) and, when applicable, to:

- Certify that the TIN you are giving is correct (or you are waiting for a number to be issued),
- Certify that you are not subject to backup withholding, or
- Claim exemption from backup withholding if you are a U.S. exempt payee. If applicable, you are also certifying that as a U.S. person, your allocable share of any partnership income from a U.S. trade or business is not subject to the withholding tax on foreign partners' share of effectively connected income.

**Note.** If a requester gives you a form other than Form W-9 to request your TIN, you must use the requester's form if it is substantially similar to this Form W-9.

**Definition of a U.S. person.** For federal tax purposes, you are considered a U.S. person if you are:

- An individual who is a U.S. citizen or U.S. resident alien,
- A partnership, corporation, company, or association created or organized in the United States or under the laws of the United States,
- An estate (other than a foreign estate), or
- A domestic trust (as defined in Regulations section 301.7701-7).

**Special rules for partnerships.** Partnerships that conduct a trade or business in the United States are generally required to pay a withholding tax on any foreign partners' share of income from such business. Further, in certain cases where a Form W-9 has not been received, a partnership is required to presume that a partner is a foreign person, and pay the withholding tax. Therefore, if you are a U.S. person that is a partner in a partnership conducting a trade or business in the United States, provide Form W-9 to the partnership to establish your U.S. status and avoid withholding on your share of partnership income.

The person who gives Form W-9 to the partnership for purposes of establishing its U.S. status and avoiding withholding on its allocable share of net income from the partnership conducting a trade or business in the United States is in the following cases:

- The U.S. owner of a disregarded entity and not the entity,



# Business Category Information Form\*

IFB No. 24-15

## Annual Exterior and Interior Door Repairs & Replacement Service

Business Type Categories*	Select All That Apply
MBE: Minority-Owned Business Enterprise	
WBE: Women-Owned Business Enterprise	
VBE: Veteran Business Enterprise	
SDVOBE: Service-Disabled Veteran-Owned Business Enterprises	
DOBE: Disability-Owned Business Enterprise	
LGBTBE: Lesbian, Gay, Bisexual, Transgender Business Enterprise	

\*Information is being collected as part of a City initiative to open contract opportunities to underrepresented vendors.

I do not wish to complete this form.

There is no penalty for persons who do not complete this Form, and whether or not the Form is completed will not be taken into consideration in awarding a bid.

I certify that the foregoing information is true and correct.

\_\_\_\_\_  
By: \_\_\_\_\_

Date:

## **CONTRACT FORMS**

The awarded bidder will be required to complete and submit documents substantially similar in form to the following.

These forms may need to be modified on account of changed circumstances, and are provided for informational purposes only.

# CITY - CONTRACTOR AGREEMENT

## CONTRACT NO. C-

THIS AGREEMENT made this \_\_\_\_\_ day of \_\_\_\_\_ in the year Two Thousand and Twenty Three by and between the CITY OF NEWTON, a municipal corporation organized and existing under the laws of the Commonwealth of Massachusetts, hereinafter referred to as the CITY, acting through its Chief Procurement Officer, but without personal liability to him, and

hereinafter referred to as the CONTRACTOR.

The parties hereto for the considerations hereinafter set forth agree as follows:

- I. SCOPE OF WORK.** The Contractor shall furnish all labor, materials and equipment, and perform all work required in strict accordance with the Contract Documents for the following project:

### **ANNUAL EXTERIOR AND INTERIOR DOOR REPAIRS AND REPLACEMENT SERVICES**

- II. CONTRACT DOCUMENTS.** The Contract documents consist of the following documents which are either attached to this Agreement or are incorporated herein by referenced:

- a. This CITY-CONTRACTOR Agreement;
- b. The City's Invitation For Bid #24-15 issued by the Purchasing Department;
- c. The Project Manual for **Annual Exterior AND Interior Door Repairs And Replacement Service** including the Instructions to Bidders; General Conditions; Special Conditions; MWBE/AA Requirements, Wage Rate Requirements and Wage Rate Schedule(s) including any updated prevailing wage rate schedules if applicable; The Supplementary Special Conditions; General Requirements and Project Specifications; and Drawings, if included or referenced therein;
- d. Addenda Number(s) \_\_\_\_\_;
- e. The Bid Response of the CONTRACTOR submitted for this Project and accompanying documents and certifications;
- f. Certificate(s) of Insurance and surety bond(s) submitted by the CONTRACTOR in connection with this Project;
- g. Duly authorized and executed Amendments, Change Orders or Work Orders issued by the CITY after execution of this CITY-CONTRACTOR Agreement.

This CITY-CONTRACTOR Agreement, together with the other documents enumerated in this Article, constitute the entire Agreement between the CITY and the CONTRACTOR. The CONTRACTOR represents that its bid was made without condition, qualification or reservation of any kind, except upon the written acknowledgement and consent of the CITY.

- III. PRIORITY OF DOCUMENTS.** In the event of inconsistency between the terms of this CITY -CONTRACTOR Agreement and the Project Manual, the terms of this Agreement shall prevail.
- IV. APPLICABLE STATUTES.** All applicable federal, state and local laws and regulations are incorporated herein by reference and the Contractor agrees to comply with same.

- V. **CONTRACT TERM.** The term of this Contract shall extend from January 1, 2024 through December 31, 2024. The City shall have the option, at its sole discretion to renew this Contract for 2 additional one 1year terms, with no change in the contract price and terms and conditions. The exercise of each option to renew shall be subject to appropriation of funding therefor.
  
- VI. **AUTHORIZATION OF AND PAYMENT FOR WORK PERFORMED.** The execution of this contract does not constitute a notice to proceed or authorization to perform work. No work shall be commenced unless authorized by a written Work Order prepared by City of Newton Public Buildings Department specifying the work to be performed. The Contractor will be paid following completion and acceptance of the work authorized in accordance with the Contract. The City will use best efforts to pay within thirty (30) days of receipt of an invoice for the work authorized or acceptance of the work whichever date is later.
  
- VII. **RESPONSIBILITY FOR THE WORK/INDEMNIFICATION.** The Contractor shall take all responsibility for the work, and shall take all precautions for preventing injuries to persons and property in or about the work and shall defend, indemnify and hold the City harmless from all loss, cost, damage or expense arising from injuries to persons or property in or about the work. The Contractor shall be responsible for any damage which may be caused by the failure or insufficiency of any temporary works. He shall effectively protect his work and shall be liable for all damage and loss by delay or otherwise caused by his neglect or failure so to do.
  
- VIII. **WARRANTY.** Except as may be otherwise provided in the Project Manual, the Contractor shall replace, repair or make good, without cost to the City, any defects or faults arising within one (1) year after date of acceptance of work and materials furnished hereunder (acceptance not to be unreasonably delayed) resulting from imperfect or defective work done or materials furnished by the Contractor.
  
- IX. **PATENT INDEMNIFICATION.** The Contractor agrees to assume the defense of and shall indemnify and save harmless the City and all persons acting for or on behalf of it from all suits and claims against them, or any of them, arising from or occasioned by the use of any material, equipment or apparatus, or any part thereof which infringes or is alleged to infringe on any patent rights. In case such material, equipment or apparatus, or any part thereof, in any such suit is held to constitute infringement, the Contractor, within a reasonable time, shall at its own expense, and as the City may elect, replace such material, equipment or apparatus with non-infringing material, equipment or apparatus, or remove the material, equipment, or apparatus and refund the sums paid therefor.
  
- X. **ASSIGNMENT/SUB-CONTRACTING.** The Contractor agrees that he will not sell, assign or transfer this Contract or any part thereof or interest therein without the prior written consent of the City.
  
- XI. **TERMINATION.** If the work to be done under this Contract shall be abandoned, or if this Contract or any part thereof shall be assigned or transferred, without the previous written consent of the City, or if the Contract or any claim hereunder shall be assigned by the Contractor otherwise than as herein specified, or if at any time the City determines that the conditions herein specified as to the rate of progress are not fulfilled, or that the work or any part thereof, is unnecessarily or unreasonably delayed, or that the Contractor has violated any of the provisions of this Contract, the City may terminate this Contract and/or notify the Contractor to discontinue such work or such part thereof as the City may designate, and the City may thereupon by agreement or otherwise, as it may determine, complete the work, or any part thereof; and for such completion the City for itself or for its Contractor may take possession of and use or cause to be used in the completion of the work thereof any of such materials, apparatus, machinery, implements, and tools of every description as may be found upon said work. Termination pursuant to this paragraph shall not entitle the Contractor to any claim for damages on account thereof, nor shall it relieve the Contractor of any liability under this Contract.
  
- XII. **GOVERNING LAW.** This Contract shall be governed by and construed in accordance with the laws of the Commonwealth of Massachusetts.
  
- XIII. **INSURANCE REQUIREMENTS**  
 The Contractor shall provide insurance coverage as listed below. This insurance shall be provided at the Contractor's expense and shall be in full force and effect during the full term of this Contract.

WORKER'S COMPENSATION

Worker's Compensation: Per M.G.L. c.. 149, s. 34 and c.. 152 as amended.

COMMERCIAL GENERAL LIABILITY

Personal Injury	\$500,000 each occurrence
	\$1,000,000 aggregate
Property Damage	\$500,000 each occurrence

\$1,000,000 aggregate

VEHICLE LIABILITY

Personal Injury	\$500,000 each person
	\$1,000,000 aggregate
Property Damage	\$300,000 each occurrence
	\$500,000 aggregate

The City shall be named as additional insureds on the Vendor's Liability Policies

**XIV. SEVERABILITY.** The provisions of this Contract are severable. If any section, paragraph, clause or provision of this Contract shall be finally adjudicated by a court of competent jurisdiction to be invalid, the remainder of this Contract shall be unaffected by such adjudication and all of the remaining provisions of this Contract shall remain in full force and effect as though such section, paragraph, clause or provision, or any part thereof so adjudicated to be invalid, had not been included herein, unless such remaining provisions, standing alone, are incomplete and incapable of being executed in accordance with the intent of the parties to this Contract.

**XV. AMENDMENTS TO THIS CONTRACT.** This Contract may not be amended except in writing executed in the same manner as this CITY-CONTRACTOR Agreement.

IN WITNESS WHEREOF, the parties have caused this instrument to be executed under seal the day and year first above written.

**CONTRACTOR**

**CITY OF NEWTON**

By \_\_\_\_\_  
 Print Name \_\_\_\_\_  
 Title \_\_\_\_\_  
 Date \_\_\_\_\_

*Affix Corporate Seal Here*

No City funds are authorized until work is assigned

I further certify that the Mayor, or her designee, is authorized to execute contracts and approve change orders

By \_\_\_\_\_  
*Comptroller of Accounts*  
 Date \_\_\_\_\_

By \_\_\_\_\_  
*Chief Procurement Officer*  
 Date \_\_\_\_\_

By \_\_\_\_\_  
*Commissioner of Public Buildings*  
 Date \_\_\_\_\_

Approved as to Legal Form and Character

By \_\_\_\_\_  
*Associate City Solicitor*  
 Date \_\_\_\_\_

**CONTRACT AND BONDS APPROVED**

By \_\_\_\_\_  
*Mayor or her designee*  
 Date \_\_\_\_\_

**CERTIFICATE OF AUTHORITY – CORPORATE**

- 1. I hereby certify that I am the Clerk/Secretary of \_\_\_\_\_  
(insert full name of Corporation)
- 2. corporation, and that \_\_\_\_\_  
(insert the name of officer who signed the **contract and bonds.**)
- 3. is the duly elected \_\_\_\_\_  
(insert the title of the officer in line 2)
- 4. of said corporation, and that on \_\_\_\_\_  
(insert a date that is **ON OR BEFORE** the date the officer signed the **contract and bonds.**)

at a duly authorized meeting of the Board of Directors of said corporation, at which all the directors were present or waived notice, it was voted that

- 5. \_\_\_\_\_ the \_\_\_\_\_  
(insert **name** from line 2) (insert **title** from line 3)

of this corporation be and hereby is authorized to execute contracts and bonds in the name and on behalf of said corporation, and affix its Corporate Seal thereto, and such execution of any contract of obligation in this corporation's name and on its behalf, with or without the Corporate Seal, shall be valid and binding upon this corporation; and that the above vote has not been amended or rescinded and remains in full force and effect as of the date set forth below.

- 6. ATTEST: \_\_\_\_\_ *AFFIX CORPORATE SEAL HERE*  
(Signature of **Clerk or Secretary**)\*
- 7. Name: \_\_\_\_\_  
(Please print or type name in line 6)\*
- 8. Date: \_\_\_\_\_  
(insert a date that is **ON OR AFTER** the date the officer signed the **contract and bonds.**)

\* The name and signature inserted in lines 6 & 7 **must** be that of the **Clerk or Secretary** of the corporation.

**CITY OF NEWTON, MASSACHUSETTS**

**PAYMENT BOND**

Know All Men By These Presents:

That we, \_\_\_\_\_, as PRINCIPAL, and \_\_\_\_\_, as SURETY, are held and firmly bound unto the City of Newton as Obligee, in the sum of \_\_\_\_\_ dollars (\$ \_\_\_\_\_) to be paid to the Obligee, for which payments well and truly to be made, we bind ourselves, our respective heirs, executors, administrators, successors and assigns, jointly and severally, firmly by these presents.

Whereas, the said PRINCIPAL has made a contract with the Obligee, bearing the date of \_\_\_\_\_, 2023, for the construction of \_\_\_\_\_ in Newton, Massachusetts.  
(Project Title)

Now, the conditions of this obligation are such that if the PRINCIPAL and all Sub-contractors under said contract shall pay for all labor performed or furnished and for all materials used or employed in said contract and in any and all duly authorized modifications, alterations, extensions of time, changes or additions to said contract that may hereafter be made, notice to the SURETY of such modifications, alterations, extensions of time, changes or additions being hereby waived, the foregoing to include any other purposes or items set out in, and to be subject to, provisions of M.G.L. c. 30, sec. 39A, and M.G.L. c. 149 sec. 29, as amended, then this obligation shall become null and void; otherwise it shall remain in full force, virtue and effect.

In Witness Whereof, the PRINCIPAL and SURETY have hereto set their hands and seals this \_\_\_ day of \_\_\_ 2023.

PRINCIPAL

SURETY

\_\_\_\_\_

\_\_\_\_\_

BY \_\_\_\_\_  
(SEAL)

BY \_\_\_\_\_  
(ATTORNEY-IN-FACT) (SEAL)

\_\_\_\_\_  
(Title)

ATTEST: \_\_\_\_\_

ATTEST: \_\_\_\_\_

**DEPARTMENT**

**SERVICE CONTRACTOR'S WORK ORDER FORM**

**DATE** \_\_\_\_\_ **BUILDING** \_\_\_\_\_

**CONTRACTOR** \_\_\_\_\_ **WORK ORDER #** \_\_\_\_\_

**JOB DESCRIPTION** \_\_\_\_\_  
\_\_\_\_\_

**ARRIVE AM** \_\_\_\_\_ **PM** \_\_\_\_\_  
**TIME**  
**DEPART AM** \_\_\_\_\_ **PM** \_\_\_\_\_

**NUMBER OR CONTRACTOR PERSONNEL ON THE JOB** \_\_\_\_\_

**TOTAL MAN HOURS EXPENDED ON THIS JOB** \_\_\_\_\_

**MATERIAL USED** \_\_\_\_\_

\_\_\_\_\_  
\_\_\_\_\_  
\_\_\_\_\_  
\_\_\_\_\_  
\_\_\_\_\_

**SENIOR CUSTODIAN'S SIGNATURE** \_\_\_\_\_

- NOTES:
1. The Senior Custodian's signature signifies that the number of hours is listed correctly by the Contractor.
  2. A copy of this form must be attached to the original invoice in order for the Contractor to receive payment.

**-END OF SPECIFICATION-**



## CITY OF NEWTON

### WAGE RATE REQUIREMENTS

#### 1. GENERAL

- A. This section summarizes the requirements for the payment of wages to laborers and mechanics employed under the Contract.
- B. Other duties and requirements of law which may not be specified in this section apply and are inherently a part of the Contract.

#### 2. WAGE RATES

- A. The rate per hour to be paid to mechanics, apprentices, teamsters, chauffeurs, and laborers employed on the Work shall not be less than the rate of wages in the attached "Minimum Wage Rates" as determined by the Commissioner of Labor and Industries. This schedule shall continue to be the minimum rate of wages for said employees during the life of this Contract.
- B. Keep posted on the site a legible copy of said schedule. Keep on file the wage rates and classifications of labor employed on this Work in order that they may be available for inspection by the Owner, Administrator, or the Architect.
- C. Apprentices employed pursuant to this determination of wage rates must be registered and approved by the State Apprenticeship Council wherever rates for journeymen or apprentices are not listed.
- D. Pay reserve police officers employed on the Work the prevailing rate of wages paid to regular police officers as required by M.G.L. c149, Sec. 34B, as amended. Such police officers shall be covered by Workmen's Compensation Insurance and Employers Liability Insurance by the Contractor.
- E. **The Contractor and all subcontractors shall, on a weekly basis throughout the term of the contract, provide to the City of Newton certified payroll affidavits in pdf format verifying compliance with M.G.L. c.149, Sec. 27, 27A and 27B.** The Contractor is obligated to provide such records to the City directly on a weekly basis. The City may assess a penalty of \$100 for each day beyond the required submission date that such records are received, which amount shall be deducted from any amounts to the Contractor from the City. In the event of chronic late submissions, the City shall report the same to the Office of the Attorney General.
- F. The Contractor and all subcontractors shall provide a Statement of Compliance within 15 days of the completion of its portion of the work. This statement shall be submitted to the Owner on the form found elsewhere in this section.
- G. The Contractor shall maintain accurate and complete records, including payroll records, during the Contract term and for three years thereafter.

**END OF SECTION**



MAURA HEALEY  
Governor

KIM DRISCOLL  
Lt. Governor

THE COMMONWEALTH OF MASSACHUSETTS  
EXECUTIVE OFFICE OF LABOR AND WORKFORCE DEVELOPMENT  
DEPARTMENT OF LABOR STANDARDS

Prevailing Wage Rates

As determined by the Director under the provisions of the  
Massachusetts General Laws, Chapter 149, Sections 26 to 27H

LAUREN JONES  
Secretary

MICHAEL FLAGAHAN  
Director

**Awarding Authority:** City of Newton  
**Contract Number:** IFB #24-15 **City/Town:** NEWTON  
**Description of Work:** Annual Exterior & Interior Door Repairs and Replacement Service

**Job Location:** various locations

Information about Prevailing Wage Schedules for Awarding Authorities and Contractors

- The wage rates will remain in effect for the duration of the project, except in the case of multi-year public construction projects. For construction projects lasting longer than one year, awarding authorities must request an updated wage schedule no later than two weeks before the anniversary of the date the contract was executed by the awarding authority and the general contractor. For multi-year CM AT RISK projects, the awarding authority must request an annual update no later than two weeks before the anniversary date, determined as the earlier of: (a) the execution date of the GMP Amendment, or (b) the execution date of the first amendment to permit procurement of construction services. The annual update requirement is not applicable to 27F "rental of equipment" contracts. The updated wage schedule must be provided to all contractors, including general and sub-contractors, working on the construction project.
- This wage schedule applies only to the specific project referenced at the top of this page and uniquely identified by the "Wage Request Number" on all pages of this schedule.
- An Awarding Authority must request an updated wage schedule if it has not opened bids or selected a contractor within 90 days of the date of issuance of the wage schedule. For CM AT RISK projects (bid pursuant to G.L. c.149A), the earlier of: (a) the execution date of the GMP Amendment, or (b) the bid for the first construction scope of work must be within 90-days of the wage schedule issuance date.
- The wages schedules shall be incorporated in any advertisement or call for bids for the project as required by M.G.L. c. 149, § 27. The wage schedule shall be made a part of the contract awarded for the project. The wage schedule must be posted in a conspicuous place at the work site for the life of the project in accordance with M.G.L. c. 149 § 27. The wages listed on the wage schedule must be paid to employees performing construction work on the project whether they are employed by the prime contractor, a filed sub-bidder, or a sub-contractor.
- Apprentices working on the project are required to be registered with the Massachusetts Division of Apprentice Standards (DAS). Apprentices must keep their apprentice identification card on their persons during all work hours on the project. An apprentice registered with DAS may be paid the lower apprentice wage rate at the applicable step as provided on the prevailing wages schedule. Any apprentice not registered with DAS regardless of whether they are registered with another federal, state, local, or private agency must be paid the journeyworker's rate.
- Every contractor or subcontractor working on the construction project must submit weekly payroll reports and a Statement of Compliance directly to the awarding authority by mail or email and keep them on file for three years. Each weekly payroll report must contain: the employee's name, address, occupational classification, hours worked, and wages paid. Do not submit weekly payroll reports to DLS. For a sample payroll reporting form go to <http://www.mass.gov/dals/pw>.
- Contractors with questions about the wage rates or classifications included on the wages schedule have an affirmative obligation to inquire with DLS at (617) 626-6953.
- Contractors must obtain the wages schedules from awarding authorities. Failure of a contractor or subcontractor to pay the prevailing wage rates listed on the wages schedule to all employees who perform construction work on the project is a violation of the law and subjects the contractor or subcontractor to civil and criminal penalties.
- Employees not receiving the prevailing wage rate set forth on the wages schedule may file a complaint with the Fair Labor Division of the office of the Attorney General at (617) 727-3465.

**Issue Date:** 08/28/2023

**Wage Request Number:** 20230828-046

Classification	Effective Date	Base Wage	Health	Pension	Supplemental Unemployment	Total Rate
<b>Construction</b>						
(2 AXLE) DRIVER - EQUIPMENT <i>TEAMSTERS JOINT COUNCIL NO. 10 ZONE A</i>	12/01/2021	\$37.05	\$13.41	\$16.01	\$0.00	\$66.47
(3 AXLE) DRIVER - EQUIPMENT <i>TEAMSTERS JOINT COUNCIL NO. 10 ZONE A</i>	12/01/2021	\$37.12	\$13.41	\$16.01	\$0.00	\$66.54
(4 & 5 AXLE) DRIVER - EQUIPMENT <i>TEAMSTERS JOINT COUNCIL NO. 10 ZONE A</i>	12/01/2021	\$37.24	\$13.41	\$16.01	\$0.00	\$66.66
ADS/SUBMERSIBLE PILOT <i>PILE DRIVER LOCAL 56 (ZONE 1)</i>	08/01/2020	\$103.05	\$9.40	\$23.12	\$0.00	\$135.57
For apprentice rates see "Apprentice- PILE DRIVER"						
AIR TRACK OPERATOR <i>LABORERS - ZONE 1</i>	06/01/2023	\$44.33	\$9.40	\$17.82	\$0.00	\$71.55
	12/01/2023	\$45.58	\$9.40	\$17.82	\$0.00	\$72.80
For apprentice rates see "Apprentice- LABORER"						
AIR TRACK OPERATOR (HEAVY & HIGHWAY) <i>LABORERS - ZONE 1 (HEAVY &amp; HIGHWAY)</i>	06/01/2023	\$44.33	\$9.40	\$17.82	\$0.00	\$71.55
	12/01/2023	\$45.58	\$9.40	\$17.82	\$0.00	\$72.80
	06/01/2024	\$47.06	\$9.40	\$17.82	\$0.00	\$74.28
	12/01/2024	\$48.53	\$9.40	\$17.82	\$0.00	\$75.75
	06/01/2025	\$50.03	\$9.40	\$17.82	\$0.00	\$77.25
	12/01/2025	\$51.53	\$9.40	\$17.82	\$0.00	\$78.75
	06/01/2026	\$53.08	\$9.40	\$17.82	\$0.00	\$80.30
	12/01/2026	\$54.58	\$9.40	\$17.82	\$0.00	\$81.80
For apprentice rates see "Apprentice- LABORER (Heavy and Highway)"						
ASBESTOS REMOVER - PIPE / MECH. EQUIPT. <i>HEAT &amp; FROST INSULATORS LOCAL 6 (BOSTON)</i>	12/01/2020	\$38.10	\$12.80	\$9.45	\$0.00	\$60.35
ASPHALT RAKER <i>LABORERS - ZONE 1</i>	06/01/2023	\$43.83	\$9.40	\$17.82	\$0.00	\$71.05
	12/01/2023	\$45.08	\$9.40	\$17.82	\$0.00	\$72.30
For apprentice rates see "Apprentice- LABORER"						
ASPHALT RAKER (HEAVY & HIGHWAY) <i>LABORERS - ZONE 1 (HEAVY &amp; HIGHWAY)</i>	06/01/2023	\$43.83	\$9.40	\$17.82	\$0.00	\$71.05
	12/01/2023	\$45.08	\$9.40	\$17.82	\$0.00	\$72.30
	06/01/2024	\$46.56	\$9.40	\$17.82	\$0.00	\$73.78
	12/01/2024	\$48.03	\$9.40	\$17.82	\$0.00	\$75.25
	06/01/2025	\$49.53	\$9.40	\$17.82	\$0.00	\$76.75
	12/01/2025	\$51.03	\$9.40	\$17.82	\$0.00	\$78.25
	06/01/2026	\$52.58	\$9.40	\$17.82	\$0.00	\$79.80
	12/01/2026	\$54.08	\$9.40	\$17.82	\$0.00	\$81.30
For apprentice rates see "Apprentice- LABORER (Heavy and Highway)"						
ASPHALT/CONCRETE/CRUSHER PLANT-ON SITE <i>OPERATING ENGINEERS LOCAL 4</i>	06/01/2023	\$54.28	\$14.75	\$16.15	\$0.00	\$85.18
	12/01/2023	\$55.53	\$14.75	\$16.15	\$0.00	\$86.43
	06/01/2024	\$56.83	\$14.75	\$16.15	\$0.00	\$87.73
	12/01/2024	\$58.28	\$14.75	\$16.15	\$0.00	\$89.18
	06/01/2025	\$59.58	\$14.75	\$16.15	\$0.00	\$90.48
	12/01/2025	\$61.03	\$14.75	\$16.15	\$0.00	\$91.93
	06/01/2026	\$62.33	\$14.75	\$16.15	\$0.00	\$93.23
	12/01/2026	\$63.78	\$14.75	\$16.15	\$0.00	\$94.68
For apprentice rates see "Apprentice- OPERATING ENGINEERS"						

Classification	Effective Date	Base Wage	Health	Pension	Supplemental Unemployment	Total Rate
BACKHOE/FRONT-END LOADER <i>OPERATING ENGINEERS LOCAL 4</i>	06/01/2023	\$54.28	\$14.75	\$16.15	\$0.00	\$85.18
	12/01/2023	\$55.53	\$14.75	\$16.15	\$0.00	\$86.43
	06/01/2024	\$56.83	\$14.75	\$16.15	\$0.00	\$87.73
	12/01/2024	\$58.28	\$14.75	\$16.15	\$0.00	\$89.18
	06/01/2025	\$59.58	\$14.75	\$16.15	\$0.00	\$90.48
	12/01/2025	\$61.03	\$14.75	\$16.15	\$0.00	\$91.93
	06/01/2026	\$62.33	\$14.75	\$16.15	\$0.00	\$93.23
	12/01/2026	\$63.78	\$14.75	\$16.15	\$0.00	\$94.68
For apprentice rates see "Apprentice- OPERATING ENGINEERS"						
BARCO-TYPE JUMPING TAMPER <i>LABORERS - ZONE 1</i>	06/01/2023	\$43.83	\$9.40	\$17.82	\$0.00	\$71.05
	12/01/2023	\$45.08	\$9.40	\$17.82	\$0.00	\$72.30
For apprentice rates see "Apprentice- LABORER"						
BLOCK PAVER, RAMMER / CURB SETTER <i>LABORERS - ZONE 1</i>	06/01/2023	\$44.33	\$9.40	\$17.82	\$0.00	\$71.55
	12/01/2023	\$45.58	\$9.40	\$17.82	\$0.00	\$72.80
For apprentice rates see "Apprentice- LABORER"						
BLOCK PAVER, RAMMER / CURB SETTER (HEAVY & HIGHWAY) <i>LABORERS - ZONE 1 (HEAVY &amp; HIGHWAY)</i>	06/01/2023	\$44.33	\$9.40	\$17.82	\$0.00	\$71.55
	12/01/2023	\$45.58	\$9.40	\$17.82	\$0.00	\$72.80
	06/01/2024	\$47.06	\$9.40	\$17.82	\$0.00	\$74.28
	12/01/2024	\$48.53	\$9.40	\$17.82	\$0.00	\$75.75
	06/01/2025	\$50.03	\$9.40	\$17.82	\$0.00	\$77.25
	12/01/2025	\$51.53	\$9.40	\$17.82	\$0.00	\$78.75
	06/01/2026	\$53.08	\$9.40	\$17.82	\$0.00	\$80.30
	12/01/2026	\$54.58	\$9.40	\$17.82	\$0.00	\$81.80
For apprentice rates see "Apprentice- LABORER (Heavy and Highway)"						
BOILER MAKER <i>BOILERMAKERS LOCAL 29</i>	01/01/2023	\$47.37	\$7.07	\$20.31	\$0.00	\$74.75
	01/01/2024	\$48.12	\$7.07	\$20.60	\$0.00	\$75.79

Classification

Effective Date Base Wage Health Pension Supplemental Unemployment Total Rate

Apprentice - BOILERMAKER - Local 29

Effective Date - 01/01/2023

Step	percent	Apprentice Base Wage	Health	Pension	Supplemental Unemployment	Total Rate
1	65	\$30.79	\$7.07	\$13.22	\$0.00	\$51.08
2	65	\$30.79	\$7.07	\$13.22	\$0.00	\$51.08
3	70	\$33.16	\$7.07	\$14.23	\$0.00	\$54.46
4	75	\$35.53	\$7.07	\$15.24	\$0.00	\$57.84
5	80	\$37.90	\$7.07	\$16.25	\$0.00	\$61.22
6	85	\$40.26	\$7.07	\$17.28	\$0.00	\$64.61
7	90	\$42.63	\$7.07	\$18.28	\$0.00	\$67.98
8	95	\$45.00	\$7.07	\$19.32	\$0.00	\$71.39

Effective Date - 01/01/2024

Step	percent	Apprentice Base Wage	Health	Pension	Supplemental Unemployment	Total Rate
1	65	\$31.28	\$7.07	\$13.22	\$0.00	\$51.57
2	65	\$31.28	\$7.07	\$13.22	\$0.00	\$51.57
3	70	\$33.68	\$7.07	\$14.23	\$0.00	\$54.98
4	75	\$36.09	\$7.07	\$15.24	\$0.00	\$58.40
5	80	\$38.50	\$7.07	\$16.25	\$0.00	\$61.82
6	85	\$40.90	\$7.07	\$17.28	\$0.00	\$65.25
7	90	\$43.31	\$7.07	\$18.28	\$0.00	\$68.66
8	95	\$45.71	\$7.07	\$19.32	\$0.00	\$72.10

Notes:

Apprentice to Journeyworker Ratio:1:4

BRICK/STONE/ARTIFICIAL MASONRY (INCL. MASONRY WATERPROOFING)	08/01/2023	\$62.40	\$11.49	\$22.34	\$0.00	\$96.23
BRICKLAYERS LOCAL 3 (NEWTON)	02/01/2024	\$63.65	\$11.49	\$22.34	\$0.00	\$97.48
	08/01/2024	\$65.75	\$11.49	\$22.34	\$0.00	\$99.58
	02/01/2025	\$67.05	\$11.49	\$22.34	\$0.00	\$100.88
	08/01/2025	\$69.20	\$11.49	\$22.34	\$0.00	\$103.03
	02/01/2026	\$70.55	\$11.49	\$22.34	\$0.00	\$104.38
	08/01/2026	\$72.75	\$11.49	\$22.34	\$0.00	\$106.58
	02/01/2027	\$74.15	\$11.49	\$22.34	\$0.00	\$107.98

Issue Date: 08/28/2023

Wage Request Number: 20230828-046

Page 4 of 39

Classification Effective Date Base Wage Health Pension Supplemental Unemployment Total Rate

**Apprentice - BRICK/PLASTER/CEMENT MASON - Local 3 Newton**

Effective Date - 08/01/2023

Step	percent	Apprentice Base Wage	Health	Pension	Supplemental Unemployment	Total Rate
1	50	\$31.20	\$11.49	\$22.34	\$0.00	\$65.03
2	60	\$37.44	\$11.49	\$22.34	\$0.00	\$71.27
3	70	\$43.68	\$11.49	\$22.34	\$0.00	\$77.51
4	80	\$49.92	\$11.49	\$22.34	\$0.00	\$83.75
5	90	\$56.16	\$11.49	\$22.34	\$0.00	\$89.99

Effective Date - 02/01/2024

Step	percent	Apprentice Base Wage	Health	Pension	Supplemental Unemployment	Total Rate
1	50	\$31.83	\$11.49	\$22.34	\$0.00	\$65.66
2	60	\$38.19	\$11.49	\$22.34	\$0.00	\$72.02
3	70	\$44.56	\$11.49	\$22.34	\$0.00	\$78.39
4	80	\$50.92	\$11.49	\$22.34	\$0.00	\$84.75
5	90	\$57.29	\$11.49	\$22.34	\$0.00	\$91.12

Notes:

Apprentice to Journeyworker Ratio:1:5

BULLDOZER/GRADER/SCRAPER OPERATING ENGINEERS LOCAL 4	06/01/2023	\$53.69	\$14.75	\$16.15	\$0.00	\$84.59
	12/01/2023	\$54.93	\$14.75	\$16.15	\$0.00	\$85.83
	06/01/2024	\$56.21	\$14.75	\$16.15	\$0.00	\$87.11
	12/01/2024	\$57.65	\$14.75	\$16.15	\$0.00	\$88.55
	06/01/2025	\$58.93	\$14.75	\$16.15	\$0.00	\$89.83
	12/01/2025	\$60.37	\$14.75	\$16.15	\$0.00	\$91.27
	06/01/2026	\$61.65	\$14.75	\$16.15	\$0.00	\$92.55
	12/01/2026	\$63.09	\$14.75	\$16.15	\$0.00	\$93.99

For apprentice rates see "Apprentice- OPERATING ENGINEERS"

CAISSON & UNDERPINNING BOTTOM MAN LABORERS - FOUNDATION AND MARINE	06/01/2023	\$44.73	\$9.40	\$17.97	\$0.00	\$72.10
	12/01/2023	\$45.98	\$9.40	\$17.97	\$0.00	\$73.35
	06/01/2024	\$47.46	\$9.40	\$17.97	\$0.00	\$74.83
	12/01/2024	\$48.93	\$9.40	\$17.97	\$0.00	\$76.30
	06/01/2025	\$50.43	\$9.40	\$17.97	\$0.00	\$77.80
	12/01/2025	\$51.93	\$9.40	\$17.97	\$0.00	\$79.30
	06/01/2026	\$53.48	\$9.40	\$17.97	\$0.00	\$80.85
	12/01/2026	\$54.98	\$9.40	\$17.97	\$0.00	\$82.35

For apprentice rates see "Apprentice- LABORER"

Classification	Effective Date	Base Wage	Health	Pension	Supplemental Unemployment	Total Rate
CAISSON & UNDERPINNING LABORER <i>LABORERS - FOUNDATION AND MARINE</i>	06/01/2023	\$43.58	\$9.40	\$17.97	\$0.00	\$70.95
	12/01/2023	\$44.83	\$9.40	\$17.97	\$0.00	\$72.20
	06/01/2024	\$46.31	\$9.40	\$17.97	\$0.00	\$73.68
	12/01/2024	\$47.78	\$9.40	\$17.97	\$0.00	\$75.15
	06/01/2025	\$49.28	\$9.40	\$17.97	\$0.00	\$76.65
	12/01/2025	\$50.78	\$9.40	\$17.97	\$0.00	\$78.15
	06/01/2026	\$52.33	\$9.40	\$17.97	\$0.00	\$79.70
	12/01/2026	\$53.83	\$9.40	\$17.97	\$0.00	\$81.20
For apprentice rates see "Apprentice- LABORER"						
CAISSON & UNDERPINNING TOP MAN <i>LABORERS - FOUNDATION AND MARINE</i>	06/01/2023	\$43.58	\$9.40	\$17.97	\$0.00	\$70.95
	12/01/2023	\$44.83	\$9.40	\$17.97	\$0.00	\$72.20
	06/01/2024	\$46.31	\$9.40	\$17.97	\$0.00	\$73.68
	12/01/2024	\$47.78	\$9.40	\$17.97	\$0.00	\$75.15
	06/01/2025	\$49.28	\$9.40	\$17.97	\$0.00	\$76.65
	12/01/2025	\$50.78	\$9.40	\$17.97	\$0.00	\$78.15
	06/01/2026	\$52.33	\$9.40	\$17.97	\$0.00	\$79.70
	12/01/2026	\$53.83	\$9.40	\$17.97	\$0.00	\$81.20
For apprentice rates see "Apprentice- LABORER"						
CARBIDE CORE DRILL OPERATOR <i>LABORERS - ZONE 1</i>	06/01/2023	\$43.83	\$9.40	\$17.82	\$0.00	\$71.05
	12/01/2023	\$45.08	\$9.40	\$17.82	\$0.00	\$72.30
For apprentice rates see "Apprentice- LABORER"						
CARPENTER <i>CARPENTERS - ZONE 2 (Eastern Massachusetts)</i>	03/01/2023	\$45.12	\$9.33	\$19.97	\$0.00	\$74.42

**Apprentice - CARPENTER - Zone 2 Eastern MA**

**Effective Date - 03/01/2023**

Step	percent	Apprentice Base Wage	Health	Pension	Supplemental Unemployment	Total Rate
1	50	\$22.56	\$9.33	\$1.73	\$0.00	\$33.62
2	60	\$27.07	\$9.33	\$1.73	\$0.00	\$38.13
3	70	\$31.58	\$9.33	\$14.78	\$0.00	\$55.69
4	75	\$33.84	\$9.33	\$14.78	\$0.00	\$57.95
5	80	\$36.10	\$9.33	\$16.51	\$0.00	\$61.94
6	80	\$36.10	\$9.33	\$16.51	\$0.00	\$61.94
7	90	\$40.61	\$9.33	\$18.24	\$0.00	\$68.18
8	90	\$40.61	\$9.33	\$18.24	\$0.00	\$68.18

**Notes:**

% Indentured After 10/1/17; 45/45/55/55/70/70/80/80  
Step 1&2 \$30.71/ 3&4 \$36.93/ 5&6 \$56.82/ 7&8 \$63.06

**Apprentice to Journeyworker Ratio:1:5**

CARPENTER WOOD FRAME <i>CARPENTERS - ZONE 2 (Wood Frame)</i>	04/01/2023	\$28.84	\$6.69	\$6.47	\$0.00	\$42.00
All Aspects of New Wood Frame Work						

Issue Date: 08/28/2023

Wage Request Number: 20230828-046

Page 6 of 39

Classification

Effective Date Base Wage Health Pension Supplemental Unemployment Total Rate

**Apprentice - CARPENTER (Wood Frame) - Zone 2**

Effective Date - 04/01/2023

Step	percent	Apprentice Base Wage	Health	Pension	Supplemental Unemployment	Total Rate
1	50	\$14.42	\$6.69	\$0.00	\$0.00	\$21.11
2	50	\$14.42	\$6.69	\$0.00	\$0.00	\$21.11
3	55	\$15.86	\$6.69	\$2.00	\$0.00	\$24.55
4	55	\$15.86	\$6.69	\$2.00	\$0.00	\$24.55
5	70	\$20.19	\$6.69	\$6.47	\$0.00	\$33.35
6	70	\$20.19	\$6.69	\$6.47	\$0.00	\$33.35
7	80	\$23.07	\$6.69	\$6.47	\$0.00	\$36.23
8	80	\$23.07	\$6.69	\$6.47	\$0.00	\$36.23

**Notes:**

% Indentured After 10/1/17; 45/45/55/55/70/70/80/80  
Step 1&2 \$20.09/ 3&4 \$24.95/ 5&6 \$33.04/ 7&8 \$35.91

Apprentice to Journeyworker Ratio:1:5

CEMENT MASONRY/PLASTERING	07/01/2023	\$50.59	\$12.75	\$22.74	\$0.87	\$86.95
BRICKLAYERS LOCAL 3 (NEWTON)	01/01/2024	\$51.73	\$12.75	\$22.74	\$0.87	\$88.09

**Apprentice - CEMENT MASONRY/PLASTERING - Eastern Mass (Newton)**

Effective Date - 07/01/2023

Step	percent	Apprentice Base Wage	Health	Pension	Supplemental Unemployment	Total Rate
1	50	\$25.30	\$12.75	\$15.49	\$0.00	\$53.54
2	60	\$30.35	\$12.75	\$18.13	\$0.87	\$62.10
3	65	\$32.88	\$12.75	\$19.13	\$0.87	\$65.63
4	70	\$35.41	\$12.75	\$20.13	\$0.87	\$69.16
5	75	\$37.94	\$12.75	\$21.13	\$0.87	\$72.69
6	80	\$40.47	\$12.75	\$22.13	\$0.87	\$76.22
7	90	\$45.53	\$12.75	\$23.13	\$0.87	\$82.28

Effective Date - 01/01/2024

Step	percent	Apprentice Base Wage	Health	Pension	Supplemental Unemployment	Total Rate
1	50	\$25.87	\$12.75	\$15.49	\$0.00	\$54.11
2	60	\$31.04	\$12.75	\$18.13	\$0.87	\$62.79
3	65	\$33.62	\$12.75	\$19.13	\$0.87	\$66.37
4	70	\$36.21	\$12.75	\$20.13	\$0.87	\$69.96
5	75	\$38.80	\$12.75	\$21.13	\$0.87	\$73.55
6	80	\$41.38	\$12.75	\$22.13	\$0.87	\$77.13
7	90	\$46.56	\$12.75	\$23.13	\$0.87	\$83.31

**Notes:**

Steps 3,4 are 500 hrs. All other steps are 1,000 hrs.

Apprentice to Journeyworker Ratio:1:3



Classification	Effective Date	Base Wage	Health	Pension	Supplemental Unemployment	Total Rate
CHAIN SAW OPERATOR <i>LABORERS - ZONE 1</i>	06/01/2023	\$43.83	\$9.40	\$17.82	\$0.00	\$71.05
	12/01/2023	\$45.08	\$9.40	\$17.82	\$0.00	\$72.30
For apprentice rates see "Apprentice- LABORER"						
CLAM SHELLS/SLURRY BUCKETS/HEADING MACHINES <i>OPERATING ENGINEERS LOCAL 4</i>	06/01/2023	\$55.35	\$14.75	\$16.15	\$0.00	\$86.25
	12/01/2023	\$56.63	\$14.75	\$16.15	\$0.00	\$87.53
	06/01/2024	\$57.95	\$14.75	\$16.15	\$0.00	\$88.85
	12/01/2024	\$59.43	\$14.75	\$16.15	\$0.00	\$90.33
	06/01/2025	\$60.76	\$14.75	\$16.15	\$0.00	\$91.66
	12/01/2025	\$62.23	\$14.75	\$16.15	\$0.00	\$93.13
	06/01/2026	\$63.56	\$14.75	\$16.15	\$0.00	\$94.46
	12/01/2026	\$65.04	\$14.75	\$16.15	\$0.00	\$95.94
For apprentice rates see "Apprentice- OPERATING ENGINEERS"						
COMPRESSOR OPERATOR <i>OPERATING ENGINEERS LOCAL 4</i>	06/01/2023	\$35.30	\$14.75	\$16.15	\$0.00	\$66.20
	12/01/2023	\$36.12	\$14.75	\$16.15	\$0.00	\$67.02
	06/01/2024	\$36.97	\$14.75	\$16.15	\$0.00	\$67.87
	12/01/2024	\$37.92	\$14.75	\$16.15	\$0.00	\$68.82
	06/01/2025	\$38.77	\$14.75	\$16.15	\$0.00	\$69.67
	12/01/2025	\$39.72	\$14.75	\$16.15	\$0.00	\$70.62
	06/01/2026	\$40.58	\$14.75	\$16.15	\$0.00	\$71.48
	12/01/2026	\$41.53	\$14.75	\$16.15	\$0.00	\$72.43
For apprentice rates see "Apprentice- OPERATING ENGINEERS"						
DELEADER (BRIDGE) <i>PAINTERS LOCAL 35 - ZONE 2</i>	07/01/2023	\$55.51	\$9.65	\$23.70	\$0.00	\$88.86
	01/01/2024	\$56.06	\$9.95	\$23.95	\$0.00	\$89.96
	07/01/2024	\$57.26	\$9.95	\$23.95	\$0.00	\$91.16
	01/01/2025	\$58.46	\$9.95	\$23.95	\$0.00	\$92.36

Classification Effective Date Base Wage Health Pension Supplemental Unemployment Total Rate

**Apprentice - PAINTER Local 35 - BRIDGES/TANKS**

Effective Date - 07/01/2023

Step	percent	Apprentice Base Wage	Health	Pension	Supplemental Unemployment	Total Rate
1	50	\$27.76	\$9.65	\$0.00	\$0.00	\$37.41
2	55	\$30.53	\$9.65	\$6.55	\$0.00	\$46.73
3	60	\$33.31	\$9.65	\$7.14	\$0.00	\$50.10
4	65	\$36.08	\$9.65	\$7.74	\$0.00	\$53.47
5	70	\$38.86	\$9.65	\$20.13	\$0.00	\$68.64
6	75	\$41.63	\$9.65	\$20.73	\$0.00	\$72.01
7	80	\$44.41	\$9.65	\$21.32	\$0.00	\$75.38
8	90	\$49.96	\$9.65	\$22.51	\$0.00	\$82.12

Effective Date - 01/01/2024

Step	percent	Apprentice Base Wage	Health	Pension	Supplemental Unemployment	Total Rate
1	50	\$28.03	\$9.95	\$0.00	\$0.00	\$37.98
2	55	\$30.83	\$9.95	\$6.66	\$0.00	\$47.44
3	60	\$33.64	\$9.95	\$7.26	\$0.00	\$50.85
4	65	\$36.44	\$9.95	\$7.87	\$0.00	\$54.26
5	70	\$39.24	\$9.95	\$20.32	\$0.00	\$69.51
6	75	\$42.05	\$9.95	\$20.93	\$0.00	\$72.93
7	80	\$44.85	\$9.95	\$21.53	\$0.00	\$76.33
8	90	\$50.45	\$9.95	\$22.74	\$0.00	\$83.14

Notes:  
Steps are 750 hrs.

Apprentice to Journeyworker Ratio:1:1

DEMO: ADZEMAN LABORERS - ZONE 1	06/01/2023	\$43.73	\$9.40	\$17.82	\$0.00	\$70.95
	12/01/2023	\$44.98	\$9.40	\$17.82	\$0.00	\$72.20
For apprentice rates see "Apprentice- LABORER"						
DEMO: BACKHOE/LOADER/HAMMER OPERATOR LABORERS - ZONE 1	06/01/2023	\$44.73	\$9.40	\$17.82	\$0.00	\$71.95
	12/01/2023	\$45.98	\$9.40	\$17.82	\$0.00	\$73.20
For apprentice rates see "Apprentice- LABORER"						
DEMO: BURNERS LABORERS - ZONE 1	06/01/2023	\$44.48	\$9.40	\$17.82	\$0.00	\$71.70
	12/01/2023	\$45.73	\$9.40	\$17.82	\$0.00	\$72.95
For apprentice rates see "Apprentice- LABORER"						
DEMO: CONCRETE CUTTER/SAWYER LABORERS - ZONE 1	06/01/2023	\$44.73	\$9.40	\$17.82	\$0.00	\$71.95
	12/01/2023	\$45.98	\$9.40	\$17.82	\$0.00	\$73.20
For apprentice rates see "Apprentice- LABORER"						
DEMO: JACKHAMMER OPERATOR LABORERS - ZONE 1	06/01/2023	\$44.48	\$9.40	\$17.82	\$0.00	\$71.70
	12/01/2023	\$45.73	\$9.40	\$17.82	\$0.00	\$72.95
For apprentice rates see "Apprentice- LABORER"						
DEMO: WRECKING LABORER LABORERS - ZONE 1	06/01/2023	\$43.73	\$9.40	\$17.82	\$0.00	\$70.95
	12/01/2023	\$44.98	\$9.40	\$17.82	\$0.00	\$72.20
For apprentice rates see "Apprentice- LABORER"						

Issue Date: 08/28/2023

Wage Request Number: 20230828-046

Page 9 of 39

Classification	Effective Date	Base Wage	Health	Pension	Supplemental Unemployment	Total Rate
DIRECTIONAL DRILL MACHINE OPERATOR <i>OPERATING ENGINEERS LOCAL 4</i>	06/01/2023	\$53.69	\$14.75	\$16.15	\$0.00	\$84.59
	12/01/2023	\$54.93	\$14.75	\$16.15	\$0.00	\$85.83
	06/01/2024	\$56.21	\$14.75	\$16.15	\$0.00	\$87.11
	12/01/2024	\$57.65	\$14.75	\$16.15	\$0.00	\$88.55
	06/01/2025	\$58.93	\$14.75	\$16.15	\$0.00	\$89.83
	12/01/2025	\$60.37	\$14.75	\$16.15	\$0.00	\$91.27
	06/01/2026	\$61.65	\$14.75	\$16.15	\$0.00	\$92.55
	12/01/2026	\$63.09	\$14.75	\$16.15	\$0.00	\$93.99
For apprentice rates see "Apprentice- OPERATING ENGINEERS"						
DIVER <i>PILE DRIVER LOCAL 56 (ZONE 1)</i>	08/01/2020	\$68.70	\$9.40	\$23.12	\$0.00	\$101.22
For apprentice rates see "Apprentice- PILE DRIVER"						
DIVER TENDER <i>PILE DRIVER LOCAL 56 (ZONE 1)</i>	08/01/2020	\$49.07	\$9.40	\$23.12	\$0.00	\$81.59
For apprentice rates see "Apprentice- PILE DRIVER"						
DIVER TENDER (EFFLUENT) <i>PILE DRIVER LOCAL 56 (ZONE 1)</i>	08/01/2020	\$73.60	\$9.40	\$23.12	\$0.00	\$106.12
For apprentice rates see "Apprentice- PILE DRIVER"						
DIVER/SLURRY (EFFLUENT) <i>PILE DRIVER LOCAL 56 (ZONE 1)</i>	08/01/2020	\$103.05	\$9.40	\$23.12	\$0.00	\$135.57
For apprentice rates see "Apprentice- PILE DRIVER"						
DRAWBRIDGE OPERATOR (Construction) <i>DRAWBRIDGE - SEIU LOCAL 888</i>	07/01/2020	\$26.77	\$6.67	\$3.93	\$0.16	\$37.53
ELECTRICIAN <i>ELECTRICIANS LOCAL 103</i>	03/01/2023	\$59.23	\$13.00	\$21.63	\$0.00	\$93.86

**Apprentice - ELECTRICIAN - Local 103**

**Effective Date - 03/01/2023**

Step	percent	Apprentice Base Wage	Health	Pension	Supplemental Unemployment	Total Rate
1	40	\$23.69	\$13.00	\$0.71	\$0.00	\$37.40
2	40	\$23.69	\$13.00	\$0.71	\$0.00	\$37.40
3	45	\$26.65	\$13.00	\$16.13	\$0.00	\$55.78
4	45	\$26.65	\$13.00	\$16.13	\$0.00	\$55.78
5	50	\$29.62	\$13.00	\$16.63	\$0.00	\$59.25
6	55	\$32.58	\$13.00	\$17.13	\$0.00	\$62.71
7	60	\$35.54	\$13.00	\$17.63	\$0.00	\$66.17
8	65	\$38.50	\$13.00	\$18.13	\$0.00	\$69.63
9	70	\$41.46	\$13.00	\$18.62	\$0.00	\$73.08
10	75	\$44.42	\$13.00	\$19.13	\$0.00	\$76.55

**Notes :**

App Prior 1/1/03; 30/35/40/45/50/55/65/70/75/80

**Apprentice to Journeyworker Ratio:2:3\*\*\***

ELEVATOR CONSTRUCTOR <i>ELEVATOR CONSTRUCTORS LOCAL 4</i>	01/01/2022	\$65.62	\$16.03	\$20.21	\$0.00	\$101.86
--	------------	---------	---------	---------	--------	----------

Issue Date: 08/28/2023

Wage Request Number: 20230828-046

Page 10 of 39

Classification Effective Date Base Wage Health Pension Supplemental Unemployment Total Rate

**Apprentice - ELEVATOR CONSTRUCTOR - Local 4**

Effective Date - 01/01/2022

Step	percent	Apprentice Base Wage	Health	Pension	Supplemental Unemployment	Total Rate
1	50	\$32.81	\$16.03	\$0.00	\$0.00	\$48.84
2	55	\$36.09	\$16.03	\$20.21	\$0.00	\$72.33
3	65	\$42.65	\$16.03	\$20.21	\$0.00	\$78.89
4	70	\$45.93	\$16.03	\$20.21	\$0.00	\$82.17
5	80	\$52.50	\$16.03	\$20.21	\$0.00	\$88.74

**Notes:**

Steps 1-2 are 6 mos.; Steps 3-5 are 1 year

Apprentice to Journeyworker Ratio:1:1

ELEVATOR CONSTRUCTOR HELPER <i>ELEVATOR CONSTRUCTORS LOCAL 4</i>	01/01/2022	\$45.93	\$16.03	\$20.21	\$0.00	\$82.17
---	------------	---------	---------	---------	--------	---------

For apprentice rates see "Apprentice - ELEVATOR CONSTRUCTOR"

FENCE & GUARD RAIL ERECTOR (HEAVY & HIGHWAY) <i>LABORERS - ZONE 1 (HEAVY &amp; HIGHWAY)</i>	06/01/2023	\$43.83	\$9.40	\$17.82	\$0.00	\$71.05
	12/01/2023	\$45.08	\$9.40	\$17.82	\$0.00	\$72.30
	06/01/2024	\$46.56	\$9.40	\$17.82	\$0.00	\$73.78
	12/01/2024	\$48.03	\$9.40	\$17.82	\$0.00	\$75.25
	06/01/2025	\$49.53	\$9.40	\$17.82	\$0.00	\$76.75
	12/01/2025	\$51.03	\$9.40	\$17.82	\$0.00	\$78.25
	06/01/2026	\$52.58	\$9.40	\$17.82	\$0.00	\$79.80
	12/01/2026	\$54.08	\$9.40	\$17.82	\$0.00	\$81.30

For apprentice rates see "Apprentice- LABORER (Heavy and Highway)"

FIELD ENG.INST.PERSON-BLDG,SITE,HVY/HWY <i>OPERATING ENGINEERS LOCAL 4</i>	05/01/2023	\$49.06	\$14.50	\$16.15	\$0.00	\$79.71
	11/01/2023	\$50.30	\$14.50	\$16.15	\$0.00	\$80.95
	05/01/2024	\$51.54	\$14.50	\$16.15	\$0.00	\$82.19
	11/01/2024	\$52.83	\$14.50	\$16.15	\$0.00	\$83.48
	05/01/2025	\$54.27	\$14.50	\$16.15	\$0.00	\$84.92
	11/01/2025	\$55.56	\$14.50	\$16.15	\$0.00	\$86.21
	05/01/2026	\$57.00	\$14.50	\$16.15	\$0.00	\$87.65
	11/01/2026	\$58.29	\$14.50	\$16.15	\$0.00	\$88.94
	05/01/2027	\$59.72	\$14.50	\$16.15	\$0.00	\$90.37

For apprentice rates see "Apprentice- OPERATING ENGINEERS"

FIELD ENG.PARTY CHIEF-BLDG,SITE,HVY/HWY <i>OPERATING ENGINEERS LOCAL 4</i>	05/01/2023	\$50.62	\$14.50	\$16.15	\$0.00	\$81.27
	11/01/2023	\$51.87	\$14.50	\$16.15	\$0.00	\$82.52
	05/01/2024	\$53.12	\$14.50	\$16.15	\$0.00	\$83.77
	11/01/2024	\$54.42	\$14.50	\$16.15	\$0.00	\$85.07
	05/01/2025	\$55.87	\$14.50	\$16.15	\$0.00	\$86.52
	11/01/2025	\$57.17	\$14.50	\$16.15	\$0.00	\$87.82
	05/01/2026	\$58.62	\$14.50	\$16.15	\$0.00	\$89.27
	11/01/2026	\$59.92	\$14.50	\$16.15	\$0.00	\$90.57
	05/01/2027	\$61.37	\$14.50	\$16.15	\$0.00	\$92.02

For apprentice rates see "Apprentice- OPERATING ENGINEERS"

Issue Date: 08/28/2023

Wage Request Number: 20230828-046

Page 11 of 39

Classification	Effective Date	Base Wage	Health	Pension	Supplemental Unemployment	Total Rate
FIELD ENG.ROD PERSON-BLDG,SITE,HVY/HWY <i>OPERATING ENGINEERS LOCAL 4</i>	05/01/2023	\$24.20	\$14.50	\$16.15	\$0.00	\$54.85
	11/01/2023	\$24.93	\$14.50	\$16.15	\$0.00	\$55.58
	05/01/2024	\$25.66	\$14.50	\$16.15	\$0.00	\$56.31
	11/01/2024	\$26.42	\$14.50	\$16.15	\$0.00	\$57.07
	05/01/2025	\$27.27	\$14.50	\$16.15	\$0.00	\$57.92
	11/01/2025	\$28.03	\$14.50	\$16.15	\$0.00	\$58.68
	05/01/2026	\$28.88	\$14.50	\$16.15	\$0.00	\$59.53
	11/01/2026	\$29.64	\$14.50	\$16.15	\$0.00	\$60.29
	05/01/2027	\$30.49	\$14.50	\$16.15	\$0.00	\$61.14
For apprentice rates see "Apprentice- OPERATING ENGINEERS"						
FIRE ALARM INSTALLER <i>ELECTRICIANS LOCAL 103</i>	03/01/2023	\$59.23	\$13.00	\$21.63	\$0.00	\$93.86
For apprentice rates see "Apprentice- ELECTRICIAN"						
FIRE ALARM REPAIR / MAINTENANCE / COMMISSIONING <i>ELECTRICIANS LOCAL 103</i>	03/01/2023	\$48.34	\$13.00	\$19.01	\$0.00	\$80.35
For apprentice rates see "Apprentice- TELECOMMUNICATIONS TECHNICIAN"						
FIREMAN (ASST. ENGINEER) <i>OPERATING ENGINEERS LOCAL 4</i>	06/01/2023	\$43.96	\$14.75	\$16.15	\$0.00	\$74.86
	12/01/2023	\$44.97	\$14.75	\$16.15	\$0.00	\$75.87
	06/01/2024	\$46.03	\$14.75	\$16.15	\$0.00	\$76.93
	12/01/2024	\$47.21	\$14.75	\$16.15	\$0.00	\$78.11
	06/01/2025	\$48.27	\$14.75	\$16.15	\$0.00	\$79.17
	12/01/2025	\$49.44	\$14.75	\$16.15	\$0.00	\$80.34
	06/01/2026	\$50.50	\$14.75	\$16.15	\$0.00	\$81.40
	12/01/2026	\$51.68	\$14.75	\$16.15	\$0.00	\$82.58
For apprentice rates see "Apprentice- OPERATING ENGINEERS"						
FLAGGER & SIGNALER (HEAVY & HIGHWAY) <i>LABORERS - ZONE 1 (HEAVY &amp; HIGHWAY)</i>	06/01/2023	\$25.98	\$9.40	\$17.82	\$0.00	\$53.20
	12/01/2023	\$25.98	\$9.40	\$17.82	\$0.00	\$53.20
	06/01/2024	\$27.01	\$9.40	\$17.82	\$0.00	\$54.23
	12/01/2024	\$27.01	\$9.40	\$17.82	\$0.00	\$54.23
	06/01/2025	\$28.09	\$9.40	\$17.82	\$0.00	\$55.31
	12/01/2025	\$28.09	\$9.40	\$17.82	\$0.00	\$55.31
	06/01/2026	\$29.21	\$9.40	\$17.82	\$0.00	\$56.43
	12/01/2026	\$29.21	\$9.40	\$17.82	\$0.00	\$56.43
For apprentice rates see "Apprentice- LABORER (Heavy and Highway)"						
FLOORCOVERER <i>FLOORCOVERERS LOCAL 2168 ZONE I</i>	03/01/2022	\$51.77	\$9.33	\$20.27	\$0.00	\$81.37

Classification Effective Date Base Wage Health Pension Supplemental Unemployment Total Rate

**Apprentice - FLOORCOVERER - Local 2168 Zone I**

Effective Date - 03/01/2022

Step	percent	Apprentice Base Wage	Health	Pension	Supplemental Unemployment	Total Rate
1	50	\$25.89	\$9.33	\$1.79	\$0.00	\$37.01
2	55	\$28.47	\$9.33	\$1.79	\$0.00	\$39.59
3	60	\$31.06	\$9.33	\$14.90	\$0.00	\$55.29
4	65	\$33.65	\$9.33	\$14.90	\$0.00	\$57.88
5	70	\$36.24	\$9.33	\$16.69	\$0.00	\$62.26
6	75	\$38.83	\$9.33	\$16.69	\$0.00	\$64.85
7	80	\$41.42	\$9.33	\$18.48	\$0.00	\$69.23
8	85	\$44.00	\$9.33	\$18.48	\$0.00	\$71.81

Notes: Steps are 750 hrs.  
 % After 10/1/17; 45/45/55/55/70/70/80/80 (1500hr Steps)  
 Step 1&2 \$32.94/ 3&4 \$39.66/ 5&6 \$60.32/ 7&8 \$67.10

Apprentice to Journeyworker Ratio:1:1

FORK LIFT/CHERRY PICKER <i>OPERATING ENGINEERS LOCAL 4</i>	06/01/2023	\$54.28	\$14.75	\$16.15	\$0.00	\$85.18
	12/01/2023	\$55.53	\$14.75	\$16.15	\$0.00	\$86.43
	06/01/2024	\$56.83	\$14.75	\$16.15	\$0.00	\$87.73
	12/01/2024	\$58.28	\$14.75	\$16.15	\$0.00	\$89.18
	06/01/2025	\$59.58	\$14.75	\$16.15	\$0.00	\$90.48
	12/01/2025	\$61.03	\$14.75	\$16.15	\$0.00	\$91.93
	06/01/2026	\$62.33	\$14.75	\$16.15	\$0.00	\$93.23
	12/01/2026	\$63.78	\$14.75	\$16.15	\$0.00	\$94.68

For apprentice rates see "Apprentice- OPERATING ENGINEERS"

GENERATOR/LIGHTING PLANT/HEATERS <i>OPERATING ENGINEERS LOCAL 4</i>	06/01/2023	\$35.30	\$14.75	\$16.15	\$0.00	\$66.20
	12/01/2023	\$36.12	\$14.75	\$16.15	\$0.00	\$67.02
	06/01/2024	\$36.97	\$14.75	\$16.15	\$0.00	\$67.87
	12/01/2024	\$37.92	\$14.75	\$16.15	\$0.00	\$68.82
	06/01/2025	\$38.77	\$14.75	\$16.15	\$0.00	\$69.67
	12/01/2025	\$39.72	\$14.75	\$16.15	\$0.00	\$70.62
	06/01/2026	\$40.58	\$14.75	\$16.15	\$0.00	\$71.48
	12/01/2026	\$41.53	\$14.75	\$16.15	\$0.00	\$72.43

For apprentice rates see "Apprentice- OPERATING ENGINEERS"

GLAZIER (GLASS PLANK/AIR BARRIER/INTERIOR SYSTEMS) <i>GLAZIERS LOCAL 35 (ZONE 2)</i>	07/01/2023	\$45.01	\$9.95	\$23.70	\$0.00	\$78.36
	01/01/2024	\$45.56	\$9.95	\$23.95	\$0.00	\$79.46
	07/01/2024	\$46.76	\$9.95	\$23.95	\$0.00	\$80.66
	01/01/2025	\$47.96	\$9.95	\$23.95	\$0.00	\$81.86

Classification Effective Date Base Wage Health Pension Supplemental Unemployment Total Rate

**Apprentice - GLAZIER - Local 35 Zone 2**

Effective Date - 07/01/2023

Step	percent	Apprentice Base Wage	Health	Pension	Supplemental Unemployment	Total Rate
1	50	\$22.51	\$9.65	\$0.00	\$0.00	\$32.16
2	55	\$24.76	\$9.65	\$6.55	\$0.00	\$40.96
3	60	\$27.01	\$9.65	\$7.14	\$0.00	\$43.80
4	65	\$29.26	\$9.65	\$7.74	\$0.00	\$46.65
5	70	\$31.51	\$9.65	\$20.13	\$0.00	\$61.29
6	75	\$33.76	\$9.65	\$20.73	\$0.00	\$64.14
7	80	\$36.01	\$9.65	\$21.32	\$0.00	\$66.98
8	90	\$40.51	\$9.65	\$22.51	\$0.00	\$72.67

Effective Date - 01/01/2024

Step	percent	Apprentice Base Wage	Health	Pension	Supplemental Unemployment	Total Rate
1	50	\$22.78	\$9.95	\$0.00	\$0.00	\$32.73
2	55	\$25.06	\$9.95	\$6.66	\$0.00	\$41.67
3	60	\$27.34	\$9.95	\$7.26	\$0.00	\$44.55
4	65	\$29.61	\$9.95	\$7.87	\$0.00	\$47.43
5	70	\$31.89	\$9.95	\$20.32	\$0.00	\$62.16
6	75	\$34.17	\$9.95	\$20.93	\$0.00	\$65.05
7	80	\$36.45	\$9.95	\$21.53	\$0.00	\$67.93
8	90	\$41.00	\$9.95	\$22.74	\$0.00	\$73.69

**Notes:**

Steps are 750 hrs.

**Apprentice to Journeyworker Ratio:1:1**

HOISTING ENGINEER/CRANES/GRADALLS	06/01/2023	\$54.28	\$14.75	\$16.15	\$0.00	\$85.18
OPERATING ENGINEERS LOCAL 4	12/01/2023	\$55.53	\$14.75	\$16.15	\$0.00	\$86.43
	06/01/2024	\$56.83	\$14.75	\$16.15	\$0.00	\$87.73
	12/01/2024	\$58.28	\$14.75	\$16.15	\$0.00	\$89.18
	06/01/2025	\$59.58	\$14.75	\$16.15	\$0.00	\$90.48
	12/01/2025	\$61.03	\$14.75	\$16.15	\$0.00	\$91.93
	06/01/2026	\$62.33	\$14.75	\$16.15	\$0.00	\$93.23
	12/01/2026	\$63.78	\$14.75	\$16.15	\$0.00	\$94.68

Issue Date: 08/28/2023

Wage Request Number: 20230828-046

Page 14 of 39

Classification Effective Date Base Wage Health Pension Supplemental Unemployment Total Rate

**Apprentice - OPERATING ENGINEERS - Local 4**

Effective Date - 06/01/2023

Step	percent	Apprentice Base Wage	Health	Pension	Supplemental Unemployment	Total Rate
1	55	\$29.85	\$14.75	\$0.00	\$0.00	\$44.60
2	60	\$32.57	\$14.75	\$16.15	\$0.00	\$63.47
3	65	\$35.28	\$14.75	\$16.15	\$0.00	\$66.18
4	70	\$38.00	\$14.75	\$16.15	\$0.00	\$68.90
5	75	\$40.71	\$14.75	\$16.15	\$0.00	\$71.61
6	80	\$43.42	\$14.75	\$16.15	\$0.00	\$74.32
7	85	\$46.14	\$14.75	\$16.15	\$0.00	\$77.04
8	90	\$48.85	\$14.75	\$16.15	\$0.00	\$79.75

Effective Date - 12/01/2023

Step	percent	Apprentice Base Wage	Health	Pension	Supplemental Unemployment	Total Rate
1	55	\$30.54	\$14.75	\$0.00	\$0.00	\$45.29
2	60	\$33.32	\$14.75	\$16.15	\$0.00	\$64.22
3	65	\$36.09	\$14.75	\$16.15	\$0.00	\$66.99
4	70	\$38.87	\$14.75	\$16.15	\$0.00	\$69.77
5	75	\$41.65	\$14.75	\$16.15	\$0.00	\$72.55
6	80	\$44.42	\$14.75	\$16.15	\$0.00	\$75.32
7	85	\$47.20	\$14.75	\$16.15	\$0.00	\$78.10
8	90	\$49.98	\$14.75	\$16.15	\$0.00	\$80.88

Notes:

Apprentice to Journeyworker Ratio:1:6

HVAC (DUCTWORK) <i>SHEETMETAL WORKERS LOCAL 17 - A</i>	08/01/2023	\$57.01	\$14.11	\$26.64	\$2.83	\$100.59
	02/01/2024	\$58.71	\$14.11	\$26.64	\$2.83	\$102.29
	08/01/2024	\$60.46	\$14.11	\$26.64	\$2.83	\$104.04
	02/01/2025	\$62.21	\$14.11	\$26.64	\$2.83	\$105.79
	08/01/2025	\$64.06	\$14.11	\$26.64	\$2.83	\$107.64
	02/01/2026	\$66.01	\$14.11	\$26.64	\$2.83	\$109.59

For apprentice rates see "Apprentice- SHEET METAL WORKER"

HVAC (ELECTRICAL CONTROLS) <i>ELECTRICIANS LOCAL 103</i>	03/01/2023	\$59.23	\$13.00	\$21.63	\$0.00	\$93.86
---	------------	---------	---------	---------	--------	---------

For apprentice rates see "Apprentice- ELECTRICIAN"

HVAC (TESTING AND BALANCING - AIR) <i>SHEETMETAL WORKERS LOCAL 17 - A</i>	08/01/2023	\$57.01	\$14.11	\$26.64	\$2.83	\$100.59
	02/01/2024	\$58.71	\$14.11	\$26.64	\$2.83	\$102.29
	08/01/2024	\$60.46	\$14.11	\$26.64	\$2.83	\$104.04
	02/01/2025	\$62.21	\$14.11	\$26.64	\$2.83	\$105.79
	08/01/2025	\$64.06	\$14.11	\$26.64	\$2.83	\$107.64
	02/01/2026	\$66.01	\$14.11	\$26.64	\$2.83	\$109.59

For apprentice rates see "Apprentice- SHEET METAL WORKER"

Issue Date: 08/28/2023

Wage Request Number: 20230828-046

Page 15 of 39



Classification	Effective Date	Base Wage	Health	Pension	Supplemental Unemployment	Total Rate
HVAC (TESTING AND BALANCING -WATER) <i>PIPEFITTERS LOCAL 537</i>	03/01/2023	\$63.43	\$12.50	\$20.80	\$0.00	\$96.73
	09/01/2023	\$65.18	\$12.50	\$20.80	\$0.00	\$98.48
	03/01/2024	\$66.98	\$12.50	\$20.80	\$0.00	\$100.28
	09/01/2024	\$68.78	\$12.50	\$20.80	\$0.00	\$102.08
	03/01/2025	\$70.58	\$12.50	\$20.80	\$0.00	\$103.88
For apprentice rates see "Apprentice- PIPEFITTER" or "PLUMBER/PIPEFITTER"						
HVAC MECHANIC <i>PIPEFITTERS LOCAL 537</i>	03/01/2023	\$63.43	\$12.25	\$20.80	\$0.00	\$96.48
	09/01/2023	\$65.18	\$12.25	\$20.80	\$0.00	\$98.23
	03/01/2024	\$66.98	\$12.25	\$20.80	\$0.00	\$100.03
	09/01/2024	\$68.78	\$12.25	\$20.80	\$0.00	\$101.83
	03/01/2025	\$70.58	\$12.25	\$20.80	\$0.00	\$103.63
For apprentice rates see "Apprentice- PIPEFITTER" or "PLUMBER/PIPEFITTER"						
HYDRAULIC DRILLS <i>LABORERS - ZONE 1</i>	06/01/2023	\$44.33	\$9.40	\$17.82	\$0.00	\$71.55
	12/01/2023	\$45.58	\$9.40	\$17.82	\$0.00	\$72.80
For apprentice rates see "Apprentice- LABORER"						
HYDRAULIC DRILLS (HEAVY & HIGHWAY) <i>LABORERS - ZONE 1 (HEAVY &amp; HIGHWAY)</i>	06/01/2023	\$44.33	\$9.40	\$17.82	\$0.00	\$71.55
	12/01/2023	\$45.58	\$9.40	\$17.82	\$0.00	\$72.80
	06/01/2024	\$47.06	\$9.40	\$17.82	\$0.00	\$74.28
	12/01/2024	\$48.53	\$9.40	\$17.82	\$0.00	\$75.75
	06/01/2025	\$50.03	\$9.40	\$17.82	\$0.00	\$77.25
	12/01/2025	\$51.53	\$9.40	\$17.82	\$0.00	\$78.75
	06/01/2026	\$53.08	\$9.40	\$17.82	\$0.00	\$80.30
12/01/2026	\$54.58	\$9.40	\$17.82	\$0.00	\$81.80	
For apprentice rates see "Apprentice- LABORER (Heavy and Highway)"						
INSULATOR (PIPES & TANKS) <i>HEAT &amp; FROST INSULATORS LOCAL 6 (BOSTON)</i>	09/01/2022	\$53.85	\$13.80	\$17.14	\$0.00	\$84.79

**Apprentice - ASBESTOS INSULATOR (Pipes & Tanks) - Local 6 Boston**

Effective Date - 09/01/2022

Step	percent	Apprentice Base Wage	Health	Pension	Supplemental Unemployment	Total Rate
1	50	\$26.93	\$13.80	\$12.42	\$0.00	\$53.15
2	60	\$32.31	\$13.80	\$13.36	\$0.00	\$59.47
3	70	\$37.70	\$13.80	\$14.31	\$0.00	\$65.81
4	80	\$43.08	\$13.80	\$15.25	\$0.00	\$72.13

**Notes:**

Steps are 1 year

Apprentice to Journeyworker Ratio:1:4

IRONWORKER/WELDER <i>IRONWORKERS LOCAL 7 (BOSTON AREA)</i>	03/16/2023	\$52.72	\$8.35	\$26.70	\$0.00	\$87.77
	03/16/2024	\$53.97	\$8.35	\$26.70	\$0.00	\$89.02

Classification Effective Date Base Wage Health Pension Supplemental Unemployment Total Rate

**Apprentice - IRONWORKER - Local 7 Boston**

Effective Date - 03/16/2023

Step	percent	Apprentice Base Wage	Health	Pension	Supplemental Unemployment	Total Rate
1	60	\$31.63	\$8.35	\$26.70	\$0.00	\$66.68
2	70	\$36.90	\$8.35	\$26.70	\$0.00	\$71.95
3	75	\$39.54	\$8.35	\$26.70	\$0.00	\$74.59
4	80	\$42.18	\$8.35	\$26.70	\$0.00	\$77.23
5	85	\$44.81	\$8.35	\$26.70	\$0.00	\$79.86
6	90	\$47.45	\$8.35	\$26.70	\$0.00	\$82.50

Effective Date - 03/16/2024

Step	percent	Apprentice Base Wage	Health	Pension	Supplemental Unemployment	Total Rate
1	60	\$32.38	\$8.35	\$26.70	\$0.00	\$67.43
2	70	\$37.78	\$8.35	\$26.70	\$0.00	\$72.83
3	75	\$40.48	\$8.35	\$26.70	\$0.00	\$75.53
4	80	\$43.18	\$8.35	\$26.70	\$0.00	\$78.23
5	85	\$45.87	\$8.35	\$26.70	\$0.00	\$80.92
6	90	\$48.57	\$8.35	\$26.70	\$0.00	\$83.62

Notes:

Apprentice to Journeyworker Ratio:1:4

JACKHAMMER & PAVING BREAKER OPERATOR	06/01/2023	\$43.83	\$9.40	\$17.82	\$0.00	\$71.05
LABORERS - ZONE 1	12/01/2023	\$45.08	\$9.40	\$17.82	\$0.00	\$72.30
For apprentice rates see "Apprentice- LABORER"						
LABORER	06/01/2023	\$43.58	\$9.40	\$17.82	\$0.00	\$70.80
LABORERS - ZONE 1	12/01/2023	\$44.83	\$9.40	\$17.82	\$0.00	\$72.05

Classification

Effective Date    Base Wage    Health    Pension    Supplemental Unemployment    Total Rate

**Apprentice - LABORER - Zone 1**

Effective Date - 06/01/2023

Step	percent	Apprentice Base Wage	Health	Pension	Supplemental Unemployment	Total Rate
1	60	\$26.15	\$9.40	\$17.82	\$0.00	\$53.37
2	70	\$30.51	\$9.40	\$17.82	\$0.00	\$57.73
3	80	\$34.86	\$9.40	\$17.82	\$0.00	\$62.08
4	90	\$39.22	\$9.40	\$17.82	\$0.00	\$66.44

Effective Date - 12/01/2023

Step	percent	Apprentice Base Wage	Health	Pension	Supplemental Unemployment	Total Rate
1	60	\$26.90	\$9.40	\$17.82	\$0.00	\$54.12
2	70	\$31.38	\$9.40	\$17.82	\$0.00	\$58.60
3	80	\$35.86	\$9.40	\$17.82	\$0.00	\$63.08
4	90	\$40.35	\$9.40	\$17.82	\$0.00	\$67.57

Notes:

Apprentice to Journeyworker Ratio:1:5

Classification	Effective Date	Base Wage	Health	Pension	Supplemental Unemployment	Total Rate
LABORER (HEAVY & HIGHWAY)	06/01/2023	\$43.58	\$9.40	\$17.82	\$0.00	\$70.80
LABORERS - ZONE 1 (HEAVY & HIGHWAY)	12/01/2023	\$44.83	\$9.40	\$17.82	\$0.00	\$72.05
	06/01/2024	\$46.31	\$9.40	\$17.82	\$0.00	\$73.53
	12/01/2024	\$47.78	\$9.40	\$17.82	\$0.00	\$75.00
	06/01/2025	\$49.28	\$9.40	\$17.82	\$0.00	\$76.50
	12/01/2025	\$50.78	\$9.40	\$17.82	\$0.00	\$78.00
	06/01/2026	\$52.33	\$9.40	\$17.82	\$0.00	\$79.55
	12/01/2026	\$53.83	\$9.40	\$17.82	\$0.00	\$81.05

Classification Effective Date Base Wage Health Pension Supplemental Unemployment Total Rate

**Apprentice - LABORER (Heavy & Highway) - Zone 1**

Effective Date - 06/01/2023

Step	percent	Apprentice Base Wage	Health	Pension	Supplemental Unemployment	Total Rate
1	60	\$26.15	\$9.40	\$17.82	\$0.00	\$53.37
2	70	\$30.51	\$9.40	\$17.82	\$0.00	\$57.73
3	80	\$34.86	\$9.40	\$17.82	\$0.00	\$62.08
4	90	\$39.22	\$9.40	\$17.82	\$0.00	\$66.44

Effective Date - 12/01/2023

Step	percent	Apprentice Base Wage	Health	Pension	Supplemental Unemployment	Total Rate
1	60	\$26.90	\$9.40	\$17.82	\$0.00	\$54.12
2	70	\$31.38	\$9.40	\$17.82	\$0.00	\$58.60
3	80	\$35.86	\$9.40	\$17.82	\$0.00	\$63.08
4	90	\$40.35	\$9.40	\$17.82	\$0.00	\$67.57

Notes:

Apprentice to Journeyworker Ratio:1:5

LABORER: CARPENTER TENDER <i>LABORERS - ZONE 1</i>	06/01/2023	\$43.58	\$9.40	\$17.82	\$0.00	\$70.80
	12/01/2023	\$44.83	\$9.40	\$17.82	\$0.00	\$72.05
For apprentice rates see "Apprentice- LABORER"						
LABORER: CEMENT FINISHER TENDER <i>LABORERS - ZONE 1</i>	06/01/2023	\$43.58	\$9.40	\$17.82	\$0.00	\$70.80
	12/01/2023	\$44.83	\$9.40	\$17.82	\$0.00	\$72.05
For apprentice rates see "Apprentice- LABORER"						
LABORER: HAZARDOUS WASTE/ASBESTOS REMOVER <i>LABORERS - ZONE 1</i>	06/01/2023	\$43.73	\$9.40	\$17.82	\$0.00	\$70.95
	12/01/2023	\$44.98	\$9.40	\$17.82	\$0.00	\$72.20
For apprentice rates see "Apprentice- LABORER"						
LABORER: MASON TENDER <i>LABORERS - ZONE 1</i>	06/01/2023	\$43.83	\$9.40	\$17.82	\$0.00	\$71.05
	06/01/2024	\$45.08	\$9.40	\$17.82	\$0.00	\$72.30
For apprentice rates see "Apprentice- LABORER"						
LABORER: MASON TENDER (HEAVY & HIGHWAY) <i>LABORERS - ZONE 1 (HEAVY &amp; HIGHWAY)</i>	06/01/2023	\$43.83	\$9.40	\$17.82	\$0.00	\$71.05
	12/01/2023	\$45.08	\$9.40	\$17.82	\$0.00	\$72.30
	06/01/2024	\$46.56	\$9.40	\$17.82	\$0.00	\$73.78
	12/01/2024	\$48.03	\$9.40	\$17.82	\$0.00	\$75.25
	06/01/2025	\$49.53	\$9.40	\$17.82	\$0.00	\$76.75
	12/01/2025	\$51.03	\$9.40	\$17.82	\$0.00	\$78.25
	06/01/2026	\$52.58	\$9.40	\$17.82	\$0.00	\$79.80
	12/01/2026	\$54.08	\$9.40	\$17.82	\$0.00	\$81.30
For apprentice rates see "Apprentice- LABORER (Heavy and Highway)"						
LABORER: MULTI-TRADE TENDER <i>LABORERS - ZONE 1</i>	06/01/2023	\$43.58	\$9.40	\$17.82	\$0.00	\$70.80
	12/01/2023	\$44.83	\$9.40	\$17.82	\$0.00	\$72.05
For apprentice rates see "Apprentice- LABORER"						
LABORER: TREE REMOVER <i>LABORERS - ZONE 1</i>	06/01/2023	\$43.58	\$9.40	\$17.82	\$0.00	\$70.80
	12/01/2023	\$44.83	\$9.40	\$17.82	\$0.00	\$72.05
This classification applies to the removal of standing trees, and the trimming and removal of branches and limbs when related to public works construction or site clearance incidental to construction . For apprentice rates see "Apprentice- LABORER"						

Classification	Effective Date	Base Wage	Health	Pension	Supplemental Unemployment	Total Rate
LASER BEAM OPERATOR <i>LABORERS - ZONE 1</i>	06/01/2023	\$43.83	\$9.40	\$17.82	\$0.00	\$71.05
	12/01/2023	\$45.08	\$9.40	\$17.82	\$0.00	\$72.30
For apprentice rates see "Apprentice- LABORER"						
LASER BEAM OPERATOR (HEAVY & HIGHWAY) <i>LABORERS - ZONE 1 (HEAVY &amp; HIGHWAY)</i>	06/01/2023	\$43.83	\$9.40	\$17.82	\$0.00	\$71.05
	12/01/2023	\$45.08	\$9.40	\$17.82	\$0.00	\$72.30
	06/01/2024	\$46.56	\$9.40	\$17.82	\$0.00	\$73.78
	12/01/2024	\$48.03	\$9.40	\$17.82	\$0.00	\$75.25
	06/01/2025	\$49.53	\$9.40	\$17.82	\$0.00	\$76.75
	12/01/2025	\$51.03	\$9.40	\$17.82	\$0.00	\$78.25
	06/01/2026	\$52.58	\$9.40	\$17.82	\$0.00	\$79.80
	12/01/2026	\$54.08	\$9.40	\$17.82	\$0.00	\$81.30
For apprentice rates see "Apprentice- LABORER (Heavy and Highway)						
MARBLE & TILE FINISHERS <i>BRICKLAYERS LOCAL 3 - MARBLE &amp; TILE</i>	08/01/2023	\$47.89	\$11.49	\$20.37	\$0.00	\$79.75
	02/01/2024	\$48.89	\$11.49	\$20.37	\$0.00	\$80.75
	08/01/2024	\$50.57	\$11.49	\$20.37	\$0.00	\$82.43
	02/01/2025	\$51.61	\$11.49	\$20.37	\$0.00	\$83.47
	08/01/2025	\$53.33	\$11.49	\$20.37	\$0.00	\$85.19
	02/01/2026	\$54.41	\$11.49	\$20.37	\$0.00	\$86.27
	08/01/2026	\$56.17	\$11.49	\$20.37	\$0.00	\$88.03
	02/01/2027	\$57.29	\$11.49	\$20.37	\$0.00	\$89.15

**Apprentice - MARBLE & TILE FINISHER - Local 3 Marble & Tile**

**Effective Date - 08/01/2023**

Step	percent	Apprentice Base Wage	Health	Pension	Supplemental Unemployment	Total Rate
1	50	\$23.95	\$11.49	\$20.37	\$0.00	\$55.81
2	60	\$28.73	\$11.49	\$20.37	\$0.00	\$60.59
3	70	\$33.52	\$11.49	\$20.37	\$0.00	\$65.38
4	80	\$38.31	\$11.49	\$20.37	\$0.00	\$70.17
5	90	\$43.10	\$11.49	\$20.37	\$0.00	\$74.96

**Effective Date - 02/01/2024**

Step	percent	Apprentice Base Wage	Health	Pension	Supplemental Unemployment	Total Rate
1	50	\$24.45	\$11.49	\$20.37	\$0.00	\$56.31
2	60	\$29.33	\$11.49	\$20.37	\$0.00	\$61.19
3	70	\$34.22	\$11.49	\$20.37	\$0.00	\$66.08
4	80	\$39.11	\$11.49	\$20.37	\$0.00	\$70.97
5	90	\$44.00	\$11.49	\$20.37	\$0.00	\$75.86

Notes:

Apprentice to Journeyworker Ratio:1:3

Classification	Effective Date	Base Wage	Health	Pension	Supplemental Unemployment	Total Rate
MARBLE MASONS,TILELAYERS & TERRAZZO MECH <i>BRICKLAYERS LOCAL 3 - MARBLE &amp; TILE</i>	08/01/2023	\$62.42	\$11.49	\$22.31	\$0.00	\$96.22
	02/01/2024	\$63.67	\$11.49	\$22.31	\$0.00	\$97.47
	08/01/2024	\$65.77	\$11.49	\$22.31	\$0.00	\$99.57
	02/01/2025	\$67.07	\$11.49	\$22.31	\$0.00	\$100.87
	08/01/2025	\$69.22	\$11.49	\$22.31	\$0.00	\$103.02
	02/01/2026	\$70.57	\$11.49	\$22.31	\$0.00	\$104.37
	08/01/2026	\$72.77	\$11.49	\$22.31	\$0.00	\$106.57
	02/01/2027	\$74.17	\$11.49	\$22.31	\$0.00	\$107.97

**Apprentice - MARBLE-TILE-TERRAZZO MECHANIC - Local 3 Marble & Tile**

**Effective Date - 08/01/2023**

Step	percent	Apprentice Base Wage	Health	Pension	Supplemental Unemployment	Total Rate
1	50	\$31.21	\$11.49	\$22.31	\$0.00	\$65.01
2	60	\$37.45	\$11.49	\$22.31	\$0.00	\$71.25
3	70	\$43.69	\$11.49	\$22.31	\$0.00	\$77.49
4	80	\$49.94	\$11.49	\$22.31	\$0.00	\$83.74
5	90	\$56.18	\$11.49	\$22.31	\$0.00	\$89.98

**Effective Date - 02/01/2024**

Step	percent	Apprentice Base Wage	Health	Pension	Supplemental Unemployment	Total Rate
1	50	\$31.84	\$11.49	\$22.31	\$0.00	\$65.64
2	60	\$38.20	\$11.49	\$22.31	\$0.00	\$72.00
3	70	\$44.57	\$11.49	\$22.31	\$0.00	\$78.37
4	80	\$50.94	\$11.49	\$22.31	\$0.00	\$84.74
5	90	\$57.30	\$11.49	\$22.31	\$0.00	\$91.10

Notes:

Apprentice to Journeyworker Ratio:1:5

MECH. SWEEPER OPERATOR (ON CONST. SITES) <i>OPERATING ENGINEERS LOCAL 4</i>	06/01/2023	\$53.69	\$14.75	\$16.15	\$0.00	\$84.59
	12/01/2023	\$54.93	\$14.75	\$16.15	\$0.00	\$85.83
	06/01/2024	\$56.21	\$14.75	\$16.15	\$0.00	\$87.11
	12/01/2024	\$57.65	\$14.75	\$16.15	\$0.00	\$88.55
	06/01/2025	\$58.93	\$14.75	\$16.15	\$0.00	\$89.83
	12/01/2025	\$60.37	\$14.75	\$16.15	\$0.00	\$91.27
	06/01/2026	\$61.65	\$14.75	\$16.15	\$0.00	\$92.55
	12/01/2026	\$63.09	\$14.75	\$16.15	\$0.00	\$93.99

For apprentice rates see "Apprentice- OPERATING ENGINEERS"

Classification	Effective Date	Base Wage	Health	Pension	Supplemental Unemployment	Total Rate
MECHANICS MAINTENANCE <i>OPERATING ENGINEERS LOCAL 4</i>	06/01/2023	\$53.69	\$14.75	\$16.15	\$0.00	\$84.59
	12/01/2023	\$54.93	\$14.75	\$16.15	\$0.00	\$85.83
	06/01/2024	\$56.21	\$14.75	\$16.15	\$0.00	\$87.11
	12/01/2024	\$57.65	\$14.75	\$16.15	\$0.00	\$88.55
	06/01/2025	\$58.93	\$14.75	\$16.15	\$0.00	\$89.83
	12/01/2025	\$60.37	\$14.75	\$16.15	\$0.00	\$91.27
	06/01/2026	\$61.65	\$14.75	\$16.15	\$0.00	\$92.55
	12/01/2026	\$63.09	\$14.75	\$16.15	\$0.00	\$93.99

For apprentice rates see "Apprentice- OPERATING ENGINEERS"

MILLWRIGHT (Zone 1) <i>MILLWRIGHTS LOCAL 1121 - Zone 1</i>	01/02/2023	\$47.27	\$8.58	\$21.57	\$0.00	\$77.42
---	------------	---------	--------	---------	--------	---------

**Apprentice - MILLWRIGHT - Local 1121 Zone 1**

**Effective Date - 01/02/2023**

Step	percent	Apprentice Base Wage	Health	Pension	Supplemental Unemployment	Total Rate
1	55	\$26.00	\$8.58	\$5.72	\$0.00	\$40.30
2	65	\$30.73	\$8.58	\$17.93	\$0.00	\$57.24
3	75	\$35.45	\$8.58	\$18.98	\$0.00	\$63.01
4	85	\$40.18	\$8.58	\$20.01	\$0.00	\$68.77

Notes: Step 1&2 Appr. indentured after 1/6/2020 receive no pension, but do receive annuity. (Step 1 \$5.72, Step 2 \$6.66)  
Steps are 2,000 hours

**Apprentice to Journeyworker Ratio:1:4**

MORTAR MIXER <i>LABORERS - ZONE 1</i>	06/01/2023	\$43.83	\$9.40	\$17.82	\$0.00	\$71.05
	12/01/2023	\$45.08	\$9.40	\$17.82	\$0.00	\$72.30

For apprentice rates see "Apprentice- LABORER"

OILER (OTHER THAN TRUCK CRANES,GRADALLS) <i>OPERATING ENGINEERS LOCAL 4</i>	06/01/2023	\$24.34	\$14.75	\$16.15	\$0.00	\$55.24
	12/01/2023	\$24.91	\$14.75	\$16.15	\$0.00	\$55.81
	06/01/2024	\$25.51	\$14.75	\$16.15	\$0.00	\$56.41
	12/01/2024	\$26.17	\$14.75	\$16.15	\$0.00	\$57.07
	06/01/2025	\$26.77	\$14.75	\$16.15	\$0.00	\$57.67
	12/01/2025	\$27.43	\$14.75	\$16.15	\$0.00	\$58.33
	06/01/2026	\$28.02	\$14.75	\$16.15	\$0.00	\$58.92
	12/01/2026	\$28.69	\$14.75	\$16.15	\$0.00	\$59.59

For apprentice rates see "Apprentice- OPERATING ENGINEERS"

OILER (TRUCK CRANES, GRADALLS) <i>OPERATING ENGINEERS LOCAL 4</i>	06/01/2023	\$29.67	\$14.75	\$16.15	\$0.00	\$60.57
	12/01/2023	\$30.36	\$14.75	\$16.15	\$0.00	\$61.26
	06/01/2024	\$31.08	\$14.75	\$16.15	\$0.00	\$61.98
	12/01/2024	\$31.88	\$14.75	\$16.15	\$0.00	\$62.78
	06/01/2025	\$32.60	\$14.75	\$16.15	\$0.00	\$63.50
	12/01/2025	\$33.40	\$14.75	\$16.15	\$0.00	\$64.30
	06/01/2026	\$34.12	\$14.75	\$16.15	\$0.00	\$65.02
	12/01/2026	\$34.92	\$14.75	\$16.15	\$0.00	\$65.82

For apprentice rates see "Apprentice- OPERATING ENGINEERS"

Classification	Effective Date	Base Wage	Health	Pension	Supplemental Unemployment	Total Rate
OTHER POWER DRIVEN EQUIPMENT - CLASS II <i>OPERATING ENGINEERS LOCAL 4</i>	06/01/2023	\$53.69	\$14.75	\$16.15	\$0.00	\$84.59
	12/01/2023	\$54.93	\$14.75	\$16.15	\$0.00	\$85.83
	06/01/2024	\$56.21	\$14.75	\$16.15	\$0.00	\$87.11
	12/01/2024	\$57.65	\$14.75	\$16.15	\$0.00	\$88.55
	06/01/2025	\$58.93	\$14.75	\$16.15	\$0.00	\$89.83
	12/01/2025	\$60.37	\$14.75	\$16.15	\$0.00	\$91.27
	06/01/2026	\$61.65	\$14.75	\$16.15	\$0.00	\$92.55
	12/01/2026	\$63.09	\$14.75	\$16.15	\$0.00	\$93.99

For apprentice rates see "Apprentice- OPERATING ENGINEERS"

PAINTER (BRIDGES/TANKS) <i>PAINTERS LOCAL 35 - ZONE 2</i>	07/01/2023	\$55.51	\$9.65	\$23.70	\$0.00	\$88.86
	01/01/2024	\$56.06	\$9.95	\$23.95	\$0.00	\$89.96
	07/01/2024	\$57.26	\$9.95	\$23.95	\$0.00	\$91.16
	01/01/2025	\$58.46	\$9.95	\$23.95	\$0.00	\$92.36

**Apprentice - PAINTER Local 35 - BRIDGES/TANKS**

Effective Date - 07/01/2023

Step	percent	Apprentice Base Wage	Health	Pension	Supplemental Unemployment	Total Rate
1	50	\$27.76	\$9.65	\$0.00	\$0.00	\$37.41
2	55	\$30.53	\$9.65	\$6.55	\$0.00	\$46.73
3	60	\$33.31	\$9.65	\$7.14	\$0.00	\$50.10
4	65	\$36.08	\$9.65	\$7.74	\$0.00	\$53.47
5	70	\$38.86	\$9.65	\$20.13	\$0.00	\$68.64
6	75	\$41.63	\$9.65	\$20.73	\$0.00	\$72.01
7	80	\$44.41	\$9.65	\$21.32	\$0.00	\$75.38
8	90	\$49.96	\$9.65	\$22.51	\$0.00	\$82.12

Effective Date - 01/01/2024

Step	percent	Apprentice Base Wage	Health	Pension	Supplemental Unemployment	Total Rate
1	50	\$28.03	\$9.95	\$0.00	\$0.00	\$37.98
2	55	\$30.83	\$9.95	\$6.66	\$0.00	\$47.44
3	60	\$33.64	\$9.95	\$7.26	\$0.00	\$50.85
4	65	\$36.44	\$9.95	\$7.87	\$0.00	\$54.26
5	70	\$39.24	\$9.95	\$20.32	\$0.00	\$69.51
6	75	\$42.05	\$9.95	\$20.93	\$0.00	\$72.93
7	80	\$44.85	\$9.95	\$21.53	\$0.00	\$76.33
8	90	\$50.45	\$9.95	\$22.74	\$0.00	\$83.14

**Notes:**

Steps are 750 hrs.

**Apprentice to Journeyworker Ratio:1:1**

PAINTER (SPRAY OR SANDBLAST, NEW) *	07/01/2023	\$46.41	\$9.65	\$23.70	\$0.00	\$79.76
* If 30% or more of surfaces to be painted are new construction, NEW paint rate shall be used. <i>PAINTERS LOCAL 35 - ZONE 2</i>	01/01/2024	\$46.96	\$9.95	\$23.95	\$0.00	\$80.86
	07/01/2024	\$48.16	\$9.95	\$23.95	\$0.00	\$82.06
	01/01/2025	\$49.36	\$9.95	\$23.95	\$0.00	\$83.26

Issue Date: 08/28/2023

Wage Request Number: 20230828-046

Page 23 of 39



Classification Effective Date Base Wage Health Pension Supplemental Unemployment Total Rate

**Apprentice - PAINTER Local 35 Zone 2 - Spray/Sandblast - New**

Effective Date - 07/01/2023

Step	percent	Apprentice Base Wage	Health	Pension	Supplemental Unemployment	Total Rate
1	50	\$23.21	\$9.65	\$0.00	\$0.00	\$32.86
2	55	\$25.53	\$9.65	\$6.55	\$0.00	\$41.73
3	60	\$27.85	\$9.65	\$7.14	\$0.00	\$44.64
4	65	\$30.17	\$9.65	\$7.74	\$0.00	\$47.56
5	70	\$32.49	\$9.65	\$20.13	\$0.00	\$62.27
6	75	\$34.81	\$9.65	\$20.73	\$0.00	\$65.19
7	80	\$37.13	\$9.65	\$21.32	\$0.00	\$68.10
8	90	\$41.77	\$8.65	\$22.51	\$0.00	\$72.93

Effective Date - 01/01/2024

Step	percent	Apprentice Base Wage	Health	Pension	Supplemental Unemployment	Total Rate
1	50	\$23.48	\$9.95	\$0.00	\$0.00	\$33.43
2	55	\$25.83	\$9.95	\$6.66	\$0.00	\$42.44
3	60	\$28.18	\$9.95	\$7.26	\$0.00	\$45.39
4	65	\$30.52	\$9.95	\$7.87	\$0.00	\$48.34
5	70	\$32.87	\$9.95	\$20.32	\$0.00	\$63.14
6	75	\$35.22	\$9.95	\$20.93	\$0.00	\$66.10
7	80	\$37.57	\$9.95	\$21.53	\$0.00	\$69.05
8	90	\$42.26	\$9.95	\$22.74	\$0.00	\$74.95

Notes:  
Steps are 750 hrs.

Apprentice to Journeyworker Ratio:1:1

PAINTER (SPRAY OR SANDBLAST, REPAINT)	07/01/2023	\$44.47	\$9.65	\$23.70	\$0.00	\$77.82
PAINTERS LOCAL 35 - ZONE 2	01/01/2024	\$45.02	\$9.95	\$23.95	\$0.00	\$78.92
	07/01/2024	\$46.22	\$9.95	\$23.95	\$0.00	\$80.12
	01/01/2025	\$47.42	\$9.95	\$23.95	\$0.00	\$81.32

Classification

Effective Date Base Wage Health Pension Supplemental Unemployment Total Rate

**Apprentice - PAINTER Local 35 Zone 2 - Spray/Sandblast - Repaint**

Effective Date - 07/01/2023

Step	percent	Apprentice Base Wage	Health	Pension	Supplemental Unemployment	Total Rate
1	50	\$22.24	\$9.65	\$0.00	\$0.00	\$31.89
2	55	\$24.46	\$9.65	\$6.55	\$0.00	\$40.66
3	60	\$26.68	\$9.65	\$7.14	\$0.00	\$43.47
4	65	\$28.91	\$9.65	\$7.74	\$0.00	\$46.30
5	70	\$31.13	\$9.65	\$20.13	\$0.00	\$60.91
6	75	\$33.35	\$9.65	\$20.73	\$0.00	\$63.73
7	80	\$35.58	\$9.65	\$21.32	\$0.00	\$66.55
8	90	\$40.02	\$9.65	\$22.51	\$0.00	\$72.18

Effective Date - 01/01/2024

Step	percent	Apprentice Base Wage	Health	Pension	Supplemental Unemployment	Total Rate
1	50	\$22.51	\$9.95	\$0.00	\$0.00	\$32.46
2	55	\$24.76	\$9.95	\$6.66	\$0.00	\$41.37
3	60	\$27.01	\$9.95	\$7.26	\$0.00	\$44.22
4	65	\$29.26	\$9.95	\$7.87	\$0.00	\$47.08
5	70	\$31.51	\$9.95	\$20.32	\$0.00	\$61.78
6	75	\$33.77	\$9.95	\$20.93	\$0.00	\$64.65
7	80	\$36.02	\$9.95	\$21.53	\$0.00	\$67.50
8	90	\$40.52	\$9.95	\$22.74	\$0.00	\$73.21

Notes:  
Steps are 750 hrs.

Apprentice to Journeyworker Ratio:1:1

PAINTER / TAPER (BRUSH, NEW) *	07/01/2023	\$45.01	\$9.65	\$23.70	\$0.00	\$78.36
* If 30% or more of surfaces to be painted are new construction, NEW paint rate shall be used. PAINTERS LOCAL 35 - ZONE 2	01/01/2024	\$45.56	\$9.95	\$23.95	\$0.00	\$79.46
	07/01/2024	\$46.76	\$9.95	\$23.95	\$0.00	\$80.66
	01/01/2025	\$47.96	\$9.95	\$23.95	\$0.00	\$81.86

Classification

Effective Date Base Wage Health Pension Supplemental Unemployment Total Rate

Apprentice - PAINTER - Local 35 Zone 2 - BRUSH NEW

Effective Date - 07/01/2023

Step	percent	Apprentice Base Wage	Health	Pension	Supplemental Unemployment	Total Rate
1	50	\$22.51	\$9.65	\$0.00	\$0.00	\$32.16
2	55	\$24.76	\$9.65	\$6.55	\$0.00	\$40.96
3	60	\$27.01	\$9.65	\$7.14	\$0.00	\$43.80
4	65	\$29.26	\$9.65	\$7.74	\$0.00	\$46.65
5	70	\$31.51	\$9.65	\$20.13	\$0.00	\$61.29
6	75	\$33.76	\$9.65	\$20.73	\$0.00	\$64.14
7	80	\$36.01	\$9.65	\$21.32	\$0.00	\$66.98
8	90	\$40.51	\$9.65	\$22.51	\$0.00	\$72.67

Effective Date - 01/01/2024

Step	percent	Apprentice Base Wage	Health	Pension	Supplemental Unemployment	Total Rate
1	50	\$22.78	\$9.95	\$0.00	\$0.00	\$32.73
2	55	\$25.06	\$9.95	\$6.66	\$0.00	\$41.67
3	60	\$27.34	\$9.95	\$7.26	\$0.00	\$44.55
4	65	\$29.61	\$9.95	\$7.87	\$0.00	\$47.43
5	70	\$31.89	\$9.95	\$20.32	\$0.00	\$62.16
6	75	\$34.17	\$9.95	\$20.93	\$0.00	\$65.05
7	80	\$36.45	\$9.95	\$21.53	\$0.00	\$67.93
8	90	\$41.00	\$9.95	\$22.74	\$0.00	\$73.69

Notes:

Steps are 750 hrs.

Apprentice to Journeyworker Ratio:1:1

PAINTER / TAPER (BRUSH, REPAINT)	07/01/2023	\$43.07	\$9.65	\$23.70	\$0.00	\$76.42
PAINTERS LOCAL 35 - ZONE 2	01/01/2024	\$43.62	\$9.95	\$23.95	\$0.00	\$77.52
	07/01/2024	\$44.82	\$9.95	\$23.95	\$0.00	\$78.72
	01/01/2025	\$46.02	\$9.95	\$23.95	\$0.00	\$79.92

Issue Date: 08/28/2023

Wage Request Number: 20230828-046

Page 26 of 39

Classification Effective Date Base Wage Health Pension Supplemental Unemployment Total Rate

**Apprentice - PAINTER Local 35 Zone 2 - BRUSH REPAINT**

Effective Date - 07/01/2023

Step	percent	Apprentice Base Wage	Health	Pension	Supplemental Unemployment	Total Rate
1	50	\$21.54	\$9.65	\$0.00	\$0.00	\$31.19
2	55	\$23.69	\$9.65	\$6.27	\$0.00	\$39.61
3	60	\$25.84	\$9.65	\$6.84	\$0.00	\$42.33
4	65	\$28.00	\$9.65	\$7.41	\$0.00	\$45.06
5	70	\$30.15	\$9.65	\$19.78	\$0.00	\$59.58
6	75	\$32.30	\$9.65	\$20.35	\$0.00	\$62.30
7	80	\$34.46	\$9.65	\$20.92	\$0.00	\$65.03
8	90	\$38.76	\$9.65	\$22.06	\$0.00	\$70.47

Effective Date - 01/01/2024

Step	percent	Apprentice Base Wage	Health	Pension	Supplemental Unemployment	Total Rate
1	50	\$21.81	\$9.95	\$0.00	\$0.00	\$31.76
2	55	\$23.99	\$9.95	\$6.66	\$0.00	\$40.60
3	60	\$26.17	\$9.95	\$7.26	\$0.00	\$43.38
4	65	\$28.35	\$9.95	\$7.87	\$0.00	\$46.17
5	70	\$30.53	\$9.95	\$20.32	\$0.00	\$60.80
6	75	\$32.72	\$9.95	\$20.93	\$0.00	\$63.60
7	80	\$34.90	\$9.95	\$21.53	\$0.00	\$66.38
8	90	\$39.26	\$9.95	\$22.74	\$0.00	\$71.95

**Notes:**

Steps are 750 hrs.

**Apprentice to Journeyworker Ratio:1:1**

PAINTER TRAFFIC MARKINGS (HEAVY/HIGHWAY)	06/01/2023	\$43.58	\$9.40	\$17.82	\$0.00	\$70.80
LABORERS - ZONE 1 (HEAVY & HIGHWAY)	12/01/2023	\$44.83	\$9.40	\$17.82	\$0.00	\$72.05
	06/01/2024	\$46.31	\$9.40	\$17.82	\$0.00	\$73.53
	12/01/2024	\$47.78	\$9.40	\$17.82	\$0.00	\$75.00
	06/01/2025	\$49.28	\$9.40	\$17.82	\$0.00	\$76.50
	12/01/2025	\$50.78	\$9.40	\$17.82	\$0.00	\$78.00
	06/01/2026	\$52.33	\$9.40	\$17.82	\$0.00	\$79.55
	12/01/2026	\$53.83	\$9.40	\$17.82	\$0.00	\$81.05

For apprentice rates see "Apprentice- LABORER (Heavy and Highway)

PANEL & PICKUP TRUCKS DRIVER	12/01/2021	\$36.88	\$13.41	\$16.01	\$0.00	\$66.30
TEAMSTERS JOINT COUNCIL NO. 10 ZONE A						

PIER AND DOCK CONSTRUCTOR (UNDERPINNING AND DECK)	08/01/2020	\$49.07	\$9.40	\$23.12	\$0.00	\$81.59
---	------------	---------	--------	---------	--------	---------

PILE DRIVER LOCAL 56 (ZONE 1)

For apprentice rates see "Apprentice- PILE DRIVER"

PILE DRIVER	08/01/2020	\$49.07	\$9.40	\$23.12	\$0.00	\$81.59
PILE DRIVER LOCAL 56 (ZONE 1)						

Issue Date: 08/28/2023

Wage Request Number: 20230828-046

Page 27 of 39

**Apprentice - PILE DRIVER - Local 56 Zone 1**

Effective Date - 08/01/2020

Step	percent	Apprentice Base Wage	Health	Pension	Supplemental Unemployment	Total Rate
1	50	\$24.54	\$9.40	\$23.12	\$0.00	\$57.06
2	60	\$29.44	\$9.40	\$23.12	\$0.00	\$61.96
3	70	\$34.35	\$9.40	\$23.12	\$0.00	\$66.87
4	75	\$36.80	\$9.40	\$23.12	\$0.00	\$69.32
5	80	\$39.26	\$9.40	\$23.12	\$0.00	\$71.78
6	80	\$39.26	\$9.40	\$23.12	\$0.00	\$71.78
7	90	\$44.16	\$9.40	\$23.12	\$0.00	\$76.68
8	90	\$44.16	\$9.40	\$23.12	\$0.00	\$76.68

Notes:  
 % Indentured After 10/1/17; 45/45/55/55/70/70/80/80  
 Step 1&2 \$34.01/ 3&4 \$41.46/ 5&6 \$62.80/ 7&8 \$69.25  
 Apprentice to Journeyworker Ratio:1:5

PIPEFITTER & STEAMFITTER <i>PIPEFITTERS LOCAL 537</i>	03/01/2023	\$63.43	\$12.25	\$20.80	\$0.00	\$96.48
	09/01/2023	\$65.18	\$12.25	\$20.80	\$0.00	\$98.23
	03/01/2024	\$66.98	\$12.25	\$20.80	\$0.00	\$100.03
	09/01/2024	\$68.78	\$12.25	\$20.80	\$0.00	\$101.83
	03/01/2025	\$70.58	\$12.25	\$20.80	\$0.00	\$103.63

**Apprentice - PIPEFITTER - Local 537**

Effective Date - 03/01/2023

Step	percent	Apprentice Base Wage	Health	Pension	Supplemental Unemployment	Total Rate
1	40	\$25.37	\$12.25	\$8.55	\$0.00	\$46.17
2	45	\$28.54	\$12.25	\$20.80	\$0.00	\$61.59
3	60	\$38.06	\$12.25	\$20.80	\$0.00	\$71.11
4	70	\$44.40	\$12.25	\$20.80	\$0.00	\$77.45
5	80	\$50.74	\$12.25	\$20.80	\$0.00	\$83.79

Effective Date - 09/01/2023

Step	percent	Apprentice Base Wage	Health	Pension	Supplemental Unemployment	Total Rate
1	40	\$26.07	\$12.25	\$8.55	\$0.00	\$46.87
2	45	\$29.33	\$12.25	\$20.80	\$0.00	\$62.38
3	60	\$39.11	\$12.25	\$20.80	\$0.00	\$72.16
4	70	\$45.63	\$12.25	\$20.80	\$0.00	\$78.68
5	80	\$52.14	\$12.25	\$20.80	\$0.00	\$85.19

Notes:  
 \*\* 1:3; 3:15; 1:10 thereafter / Steps are 1 yr.  
 Refrig/AC Mechanic \*\*1:1;1:2;2:4;3:6;4:8;5:10;6:12;7:14;8:17;9:20;10:23(Max)  
 Apprentice to Journeyworker Ratio:\*\*

Classification	Effective Date	Base Wage	Health	Pension	Supplemental Unemployment	Total Rate
PIPELAYER <i>LABORERS - ZONE 1</i>	06/01/2023	\$43.83	\$9.40	\$17.82	\$0.00	\$71.05
	12/01/2023	\$45.08	\$9.40	\$17.82	\$0.00	\$72.30
For apprentice rates see "Apprentice- LABORER"						
PIPELAYER (HEAVY & HIGHWAY) <i>LABORERS - ZONE 1 (HEAVY &amp; HIGHWAY)</i>	06/01/2023	\$43.83	\$9.40	\$17.82	\$0.00	\$71.05
	12/01/2023	\$45.08	\$9.40	\$17.82	\$0.00	\$72.30
	06/01/2024	\$46.56	\$9.40	\$17.82	\$0.00	\$73.78
	12/01/2024	\$48.03	\$9.40	\$17.82	\$0.00	\$75.25
	06/01/2025	\$49.53	\$9.40	\$17.82	\$0.00	\$76.75
	12/01/2025	\$51.03	\$9.40	\$17.82	\$0.00	\$78.25
	06/01/2026	\$52.58	\$9.40	\$17.82	\$0.00	\$79.80
	12/01/2026	\$54.08	\$9.40	\$17.82	\$0.00	\$81.30
For apprentice rates see "Apprentice- LABORER (Heavy and Highway)"						
PLUMBERS & GASFITTERS <i>PLUMBERS &amp; GASFITTERS LOCAL 12</i>	02/26/2023	\$64.69	\$14.07	\$18.86	\$0.00	\$97.62
	09/03/2023	\$66.44	\$14.07	\$18.86	\$0.00	\$99.37
	03/03/2024	\$68.24	\$14.07	\$18.86	\$0.00	\$101.17
	09/01/2024	\$70.04	\$14.07	\$18.86	\$0.00	\$102.97
	03/02/2025	\$71.84	\$14.07	\$18.86	\$0.00	\$104.77

**Apprentice - PLUMBER/GASFITTER - Local 12**

**Effective Date - 02/26/2023**

Step	percent	Apprentice Base Wage	Health	Pension	Supplemental Unemployment	Total Rate
1	35	\$22.64	\$14.07	\$6.80	\$0.00	\$43.51
2	40	\$25.88	\$14.07	\$7.72	\$0.00	\$47.67
3	55	\$35.58	\$14.07	\$10.51	\$0.00	\$60.16
4	65	\$42.05	\$14.07	\$12.36	\$0.00	\$68.48
5	75	\$48.52	\$14.07	\$14.22	\$0.00	\$76.81

**Effective Date - 09/03/2023**

Step	percent	Apprentice Base Wage	Health	Pension	Supplemental Unemployment	Total Rate
1	35	\$23.25	\$14.07	\$6.80	\$0.00	\$44.12
2	40	\$26.58	\$14.07	\$7.72	\$0.00	\$48.37
3	55	\$36.54	\$14.07	\$10.51	\$0.00	\$61.12
4	65	\$43.19	\$14.07	\$12.36	\$0.00	\$69.62
5	75	\$49.83	\$14.07	\$14.22	\$0.00	\$78.12

**Notes:**  
 \*\* 1:2; 2:6; 3:10; 4:14; 5:19/Steps are 1 yr  
 Step4 with lic\$69.00, Step5 with lic\$76.87

**Apprentice to Journeyworker Ratio: \*\***

PNEUMATIC CONTROLS (TEMP.) <i>PIPEFITTERS LOCAL 537</i>	03/01/2023	\$63.43	\$12.00	\$20.80	\$0.00	\$96.23
	09/01/2023	\$65.18	\$12.00	\$20.80	\$0.00	\$97.98
	03/01/2024	\$66.98	\$12.00	\$20.80	\$0.00	\$99.78
	09/01/2024	\$68.78	\$12.00	\$20.80	\$0.00	\$101.58
	03/01/2025	\$70.58	\$12.00	\$20.80	\$0.00	\$103.38

For apprentice rates see "Apprentice- PIPEFITTER" or "PLUMBER/PIPEFITTER"

Classification	Effective Date	Base Wage	Health	Pension	Supplemental Unemployment	Total Rate
PNEUMATIC DRILL/TOOL OPERATOR <i>LABORERS - ZONE 1</i>	06/01/2023	\$43.83	\$9.40	\$17.82	\$0.00	\$71.05
	12/01/2023	\$45.08	\$9.40	\$17.82	\$0.00	\$72.30
For apprentice rates see "Apprentice- LABORER"						
PNEUMATIC DRILL/TOOL OPERATOR (HEAVY & HIGHWAY) <i>LABORERS - ZONE 1 (HEAVY &amp; HIGHWAY)</i>	06/01/2023	\$43.83	\$9.40	\$17.82	\$0.00	\$71.05
	12/01/2023	\$45.08	\$9.40	\$17.82	\$0.00	\$72.30
	06/01/2024	\$46.56	\$9.40	\$17.82	\$0.00	\$73.78
	12/01/2024	\$48.03	\$9.40	\$17.82	\$0.00	\$75.25
	06/01/2025	\$49.53	\$9.40	\$17.82	\$0.00	\$76.75
	12/01/2025	\$51.03	\$9.40	\$17.82	\$0.00	\$78.25
	06/01/2026	\$52.58	\$9.40	\$17.82	\$0.00	\$79.80
12/01/2026	\$54.08	\$9.40	\$17.82	\$0.00	\$81.30	
For apprentice rates see "Apprentice- LABORER (Heavy and Highway)"						
POWDERMAN & BLASTER <i>LABORERS - ZONE 1</i>	06/01/2023	\$44.58	\$9.40	\$17.82	\$0.00	\$71.80
	12/01/2023	\$45.83	\$9.40	\$17.82	\$0.00	\$73.05
For apprentice rates see "Apprentice- LABORER"						
POWDERMAN & BLASTER (HEAVY & HIGHWAY) <i>LABORERS - ZONE 1 (HEAVY &amp; HIGHWAY)</i>	06/01/2023	\$44.58	\$9.40	\$17.82	\$0.00	\$71.80
	12/01/2023	\$45.83	\$9.40	\$17.82	\$0.00	\$73.05
	06/01/2024	\$47.31	\$9.40	\$17.82	\$0.00	\$74.53
	12/01/2024	\$48.78	\$9.40	\$17.82	\$0.00	\$76.00
	06/01/2025	\$50.28	\$9.40	\$17.82	\$0.00	\$77.50
	12/01/2025	\$51.78	\$9.40	\$17.82	\$0.00	\$79.00
	06/01/2026	\$53.33	\$9.40	\$17.82	\$0.00	\$80.55
	12/01/2026	\$54.83	\$9.40	\$17.82	\$0.00	\$82.05
For apprentice rates see "Apprentice- LABORER (Heavy and Highway)"						
POWER SHOVEL/DERRICK/TRENCHING MACHINE <i>OPERATING ENGINEERS LOCAL 4</i>	06/01/2023	\$54.28	\$14.75	\$16.15	\$0.00	\$85.18
	12/01/2023	\$55.53	\$14.75	\$16.15	\$0.00	\$86.43
	06/01/2024	\$56.83	\$14.75	\$16.15	\$0.00	\$87.73
	12/01/2024	\$58.28	\$14.75	\$16.15	\$0.00	\$89.18
	06/01/2025	\$59.58	\$14.75	\$16.15	\$0.00	\$90.48
	12/01/2025	\$61.03	\$14.75	\$16.15	\$0.00	\$91.93
	06/01/2026	\$62.33	\$14.75	\$16.15	\$0.00	\$93.23
	12/01/2026	\$63.78	\$14.75	\$16.15	\$0.00	\$94.68
For apprentice rates see "Apprentice- OPERATING ENGINEERS"						
PUMP OPERATOR (CONCRETE) <i>OPERATING ENGINEERS LOCAL 4</i>	06/01/2023	\$54.28	\$14.75	\$16.15	\$0.00	\$85.18
	12/01/2023	\$55.53	\$14.75	\$16.15	\$0.00	\$86.43
	06/01/2024	\$56.83	\$14.75	\$16.15	\$0.00	\$87.73
	12/01/2024	\$58.28	\$14.75	\$16.15	\$0.00	\$89.18
	06/01/2025	\$59.58	\$14.75	\$16.15	\$0.00	\$90.48
	12/01/2025	\$61.03	\$14.75	\$16.15	\$0.00	\$91.93
	06/01/2026	\$62.33	\$14.75	\$16.15	\$0.00	\$93.23
	12/01/2026	\$63.78	\$14.75	\$16.15	\$0.00	\$94.68
For apprentice rates see "Apprentice- OPERATING ENGINEERS"						

Classification	Effective Date	Base Wage	Health	Pension	Supplemental Unemployment	Total Rate
PUMP OPERATOR (DEWATERING, OTHER) <i>OPERATING ENGINEERS LOCAL 4</i>	06/01/2023	\$35.30	\$14.75	\$16.15	\$0.00	\$66.20
	12/01/2023	\$36.12	\$14.75	\$16.15	\$0.00	\$67.02
	06/01/2024	\$36.97	\$14.75	\$16.15	\$0.00	\$67.87
	12/01/2024	\$37.92	\$14.75	\$16.15	\$0.00	\$68.82
	06/01/2025	\$38.77	\$14.75	\$16.15	\$0.00	\$69.67
	12/01/2025	\$39.72	\$14.75	\$16.15	\$0.00	\$70.62
	06/01/2026	\$40.58	\$14.75	\$16.15	\$0.00	\$71.48
	12/01/2026	\$41.53	\$14.75	\$16.15	\$0.00	\$72.43
For apprentice rates see "Apprentice- OPERATING ENGINEERS"						
READY-MIX CONCRETE DRIVER <i>TEAMSTERS 170 - Rosenfeld (Walpole)</i>	05/01/2023	\$29.40	\$12.46	\$8.00	\$0.00	\$49.86
	01/01/2024	\$29.40	\$12.96	\$8.00	\$0.00	\$50.36
	05/01/2024	\$30.15	\$13.96	\$8.00	\$0.00	\$52.11
	01/01/2025	\$30.15	\$13.46	\$8.00	\$0.00	\$51.61
	05/01/2025	\$30.90	\$13.46	\$8.25	\$0.00	\$52.61
	01/01/2026	\$30.90	\$13.96	\$8.25	\$0.00	\$53.11
	05/01/2026	\$31.90	\$13.96	\$8.25	\$0.00	\$54.11
	01/01/2027	\$31.90	\$14.46	\$8.25	\$0.00	\$54.61
05/01/2027	\$32.90	\$14.46	\$8.25	\$0.00	\$55.61	
RECLAIMERS <i>OPERATING ENGINEERS LOCAL 4</i>	06/01/2023	\$53.69	\$14.75	\$16.15	\$0.00	\$84.59
	12/01/2023	\$54.93	\$14.75	\$16.15	\$0.00	\$85.83
	06/01/2024	\$56.21	\$14.75	\$16.15	\$0.00	\$87.11
	12/01/2024	\$57.65	\$14.75	\$16.15	\$0.00	\$88.55
	06/01/2025	\$58.93	\$14.75	\$16.15	\$0.00	\$89.83
	12/01/2025	\$60.37	\$14.75	\$16.15	\$0.00	\$91.27
	06/01/2026	\$61.65	\$14.75	\$16.15	\$0.00	\$92.55
	12/01/2026	\$63.09	\$14.75	\$16.15	\$0.00	\$93.99
For apprentice rates see "Apprentice- OPERATING ENGINEERS"						
RIDE-ON MOTORIZED BUGGY OPERATOR <i>LABORERS - ZONE 1</i>	06/01/2023	\$43.83	\$9.40	\$17.82	\$0.00	\$71.05
	12/01/2023	\$45.08	\$9.40	\$17.82	\$0.00	\$72.30
For apprentice rates see "Apprentice- LABORER"						
ROLLER/SPREADER/MULCHING MACHINE <i>OPERATING ENGINEERS LOCAL 4</i>	06/01/2023	\$53.69	\$14.75	\$16.15	\$0.00	\$84.59
	12/01/2023	\$54.93	\$14.75	\$16.15	\$0.00	\$85.83
	06/01/2024	\$56.21	\$14.75	\$16.15	\$0.00	\$87.11
	12/01/2024	\$57.65	\$14.75	\$16.15	\$0.00	\$88.55
	06/01/2025	\$58.93	\$14.75	\$16.15	\$0.00	\$89.83
	12/01/2025	\$60.37	\$14.75	\$16.15	\$0.00	\$91.27
	06/01/2026	\$61.65	\$14.75	\$16.15	\$0.00	\$92.55
	12/01/2026	\$63.09	\$14.75	\$16.15	\$0.00	\$93.99
For apprentice rates see "Apprentice- OPERATING ENGINEERS"						
ROOFER (Inc.Roofer Waterproofing & Roofer Damproofg) <i>ROOFERS LOCAL 33</i>	08/01/2023	\$50.03	\$12.78	\$20.20	\$0.00	\$83.01
	02/01/2024	\$51.28	\$12.78	\$20.20	\$0.00	\$84.26
	08/01/2024	\$52.78	\$12.78	\$20.20	\$0.00	\$85.76
	02/01/2025	\$54.03	\$12.78	\$20.20	\$0.00	\$87.01
	08/01/2025	\$55.53	\$12.78	\$20.20	\$0.00	\$88.51
	02/01/2026	\$56.78	\$12.78	\$20.20	\$0.00	\$89.76

Issue Date: 08/28/2023

Wage Request Number: 20230828-046

Page 31 of 39



Classification Effective Date Base Wage Health Pension Supplemental Unemployment Total Rate

**Apprentice - ROOFER - Local 33**

Effective Date - 08/01/2023

Step	percent	Apprentice Base Wage	Health	Pension	Supplemental Unemployment	Total Rate
1	50	\$25.02	\$12.78	\$5.59	\$0.00	\$43.39
2	60	\$30.02	\$12.78	\$20.20	\$0.00	\$63.00
3	65	\$32.52	\$12.78	\$20.20	\$0.00	\$65.50
4	75	\$37.52	\$12.78	\$20.20	\$0.00	\$70.50
5	85	\$42.53	\$12.78	\$20.20	\$0.00	\$75.51

Effective Date - 02/01/2024

Step	percent	Apprentice Base Wage	Health	Pension	Supplemental Unemployment	Total Rate
1	50	\$25.64	\$12.78	\$5.59	\$0.00	\$44.01
2	60	\$30.77	\$12.78	\$20.20	\$0.00	\$63.75
3	65	\$33.33	\$12.78	\$20.20	\$0.00	\$66.31
4	75	\$38.46	\$12.78	\$20.20	\$0.00	\$71.44
5	85	\$43.59	\$12.78	\$20.20	\$0.00	\$76.57

Notes: \*\* 1:5, 2:6-10, the 1:10; Reroofing: 1:4, then 1:1  
 Step 1 is 2000 hrs.; Steps 2-5 are 1000 hrs.  
 (Hot Pitch Mechanics' receive \$1.00 hr. above ROOFER)

Apprentice to Journeyworker Ratio: \*\*

ROOFER SLATE / TILE / PRECAST CONCRETE	08/01/2023	\$50.28	\$12.78	\$20.20	\$0.00	\$83.26
ROOFERS LOCAL 33	02/01/2024	\$51.53	\$12.78	\$20.20	\$0.00	\$84.51
	08/01/2024	\$53.03	\$12.78	\$20.20	\$0.00	\$86.01
	02/01/2025	\$54.28	\$12.78	\$20.20	\$0.00	\$87.26
	08/01/2025	\$55.78	\$12.78	\$20.20	\$0.00	\$88.76
	02/01/2026	\$57.03	\$12.78	\$20.20	\$0.00	\$90.01

For apprentice rates see "Apprentice- ROOFER"

SHEETMETAL WORKER	08/01/2023	\$57.01	\$14.11	\$26.64	\$2.83	\$100.59
SHEETMETAL WORKERS LOCAL 17 - A	02/01/2024	\$58.71	\$14.11	\$26.64	\$2.83	\$102.29
	08/01/2024	\$60.46	\$14.11	\$26.64	\$2.83	\$104.04
	02/01/2025	\$62.21	\$14.11	\$26.64	\$2.83	\$105.79
	08/01/2025	\$64.06	\$14.11	\$26.64	\$2.83	\$107.64
	02/01/2026	\$66.01	\$14.11	\$26.64	\$2.83	\$109.59

Classification Effective Date Base Wage Health Pension Supplemental Unemployment Total Rate

**Apprentice - SHEET METAL WORKER - Local 17-A**

Effective Date - 08/01/2023

Step	percent	Apprentice Base Wage	Health	Pension	Supplemental Unemployment	Total Rate
1	42	\$23.94	\$14.11	\$6.13	\$0.00	\$44.18
2	42	\$23.94	\$14.11	\$6.13	\$0.00	\$44.18
3	47	\$26.79	\$14.11	\$11.90	\$1.58	\$54.38
4	47	\$26.79	\$14.11	\$11.90	\$1.58	\$54.38
5	52	\$29.65	\$14.11	\$12.88	\$1.70	\$58.34
6	52	\$29.65	\$14.11	\$13.13	\$1.70	\$58.59
7	60	\$34.21	\$14.11	\$14.54	\$1.89	\$64.75
8	65	\$37.06	\$14.11	\$15.52	\$2.00	\$68.69
9	75	\$42.76	\$14.11	\$17.48	\$2.23	\$76.58
10	85	\$48.46	\$14.11	\$18.94	\$2.45	\$83.96

Effective Date - 02/01/2024

Step	percent	Apprentice Base Wage	Health	Pension	Supplemental Unemployment	Total Rate
1	42	\$24.66	\$14.11	\$6.13	\$0.00	\$44.90
2	42	\$24.66	\$14.11	\$6.13	\$0.00	\$44.90
3	47	\$27.59	\$14.11	\$11.90	\$1.61	\$55.21
4	47	\$27.59	\$14.11	\$11.90	\$1.61	\$55.21
5	52	\$30.53	\$14.11	\$12.88	\$1.73	\$59.25
6	52	\$30.53	\$14.11	\$13.13	\$1.73	\$59.50
7	60	\$35.23	\$14.11	\$14.54	\$1.92	\$65.80
8	65	\$38.16	\$14.11	\$15.52	\$2.03	\$69.82
9	75	\$44.03	\$14.11	\$17.48	\$2.27	\$77.89
10	85	\$49.90	\$14.11	\$18.94	\$2.49	\$85.44

Notes:  
Steps are 6 mos.

Apprentice to Journeyworker Ratio:1:4

SPECIALIZED EARTH MOVING EQUIP < 35 TONS <i>TEAMSTERS JOINT COUNCIL NO. 10 ZONE A</i>	12/01/2021	\$37.34	\$13.41	\$16.01	\$0.00	\$66.76
SPECIALIZED EARTH MOVING EQUIP > 35 TONS <i>TEAMSTERS JOINT COUNCIL NO. 10 ZONE A</i>	12/01/2021	\$37.63	\$13.41	\$16.01	\$0.00	\$67.05
SPRINKLER FITTER <i>SPRINKLER FITTERS LOCAL 550 - (Section A) Zone 1</i>	03/01/2023	\$66.20	\$10.90	\$23.20	\$0.00	\$100.30
	10/01/2023	\$67.95	\$10.90	\$23.20	\$0.00	\$102.05
	03/01/2024	\$69.75	\$10.90	\$23.20	\$0.00	\$103.85
	10/01/2024	\$71.55	\$10.90	\$23.20	\$0.00	\$105.65
	03/01/2025	\$73.35	\$10.90	\$23.20	\$0.00	\$107.45

Classification

Effective Date Base Wage Health Pension Supplemental Unemployment Total Rate

**Apprentice - SPRINKLER FITTER - Local 550 (Section A) Zone 1**

Effective Date - 03/01/2023

Step	percent	Apprentice Base Wage	Health	Pension	Supplemental Unemployment	Total Rate
1	35	\$23.17	\$10.90	\$12.80	\$0.00	\$46.87
2	40	\$26.48	\$10.90	\$13.60	\$0.00	\$50.98
3	45	\$29.79	\$10.90	\$14.40	\$0.00	\$55.09
4	50	\$33.10	\$10.90	\$15.20	\$0.00	\$59.20
5	55	\$36.41	\$10.90	\$16.00	\$0.00	\$63.31
6	60	\$39.72	\$10.90	\$16.80	\$0.00	\$67.42
7	65	\$43.03	\$10.90	\$17.60	\$0.00	\$71.53
8	70	\$46.34	\$10.90	\$18.40	\$0.00	\$75.64
9	75	\$49.65	\$10.90	\$19.20	\$0.00	\$79.75
10	80	\$52.96	\$10.90	\$20.00	\$0.00	\$83.86

Effective Date - 10/01/2023

Step	percent	Apprentice Base Wage	Health	Pension	Supplemental Unemployment	Total Rate
1	35	\$23.78	\$10.90	\$12.80	\$0.00	\$47.48
2	40	\$27.18	\$10.90	\$13.60	\$0.00	\$51.68
3	45	\$30.58	\$10.90	\$14.40	\$0.00	\$55.88
4	50	\$33.98	\$10.90	\$15.20	\$0.00	\$60.08
5	55	\$37.37	\$10.90	\$16.00	\$0.00	\$64.27
6	60	\$40.77	\$10.90	\$16.80	\$0.00	\$68.47
7	65	\$44.17	\$10.90	\$17.60	\$0.00	\$72.67
8	70	\$47.57	\$10.90	\$18.40	\$0.00	\$76.87
9	75	\$50.96	\$10.90	\$19.20	\$0.00	\$81.06
10	80	\$54.36	\$10.90	\$20.00	\$0.00	\$85.26

Notes: Apprentice entered prior 9/30/10:  
40/45/50/55/60/65/70/75/80/85  
Steps are 850 hours

Apprentice to Journeyworker Ratio:1:3

STEAM BOILER OPERATOR	06/01/2023	\$53.69	\$14.75	\$16.15	\$0.00	\$84.59
OPERATING ENGINEERS LOCAL 4	12/01/2023	\$54.93	\$14.75	\$16.15	\$0.00	\$85.83
	06/01/2024	\$56.21	\$14.75	\$16.15	\$0.00	\$87.11
	12/01/2024	\$57.65	\$14.75	\$16.15	\$0.00	\$88.55
	06/01/2025	\$58.93	\$14.75	\$16.15	\$0.00	\$89.83
	12/01/2025	\$60.37	\$14.75	\$16.15	\$0.00	\$91.27
	06/01/2026	\$61.65	\$14.75	\$16.15	\$0.00	\$92.55
	12/01/2026	\$63.09	\$14.75	\$16.15	\$0.00	\$93.99

For apprentice rates see "Apprentice- OPERATING ENGINEERS"

Classification	Effective Date	Base Wage	Health	Pension	Supplemental Unemployment	Total Rate
TAMPERS, SELF-PROPELLED OR TRACTOR DRAWN <i>OPERATING ENGINEERS LOCAL 4</i>	06/01/2023	\$53.69	\$14.75	\$16.15	\$0.00	\$84.59
	12/01/2023	\$54.93	\$14.75	\$16.15	\$0.00	\$85.83
	06/01/2024	\$56.21	\$14.75	\$16.15	\$0.00	\$87.11
	12/01/2024	\$57.65	\$14.75	\$16.15	\$0.00	\$88.55
	06/01/2025	\$58.93	\$14.75	\$16.15	\$0.00	\$89.83
	12/01/2025	\$60.37	\$14.75	\$16.15	\$0.00	\$91.27
	06/01/2026	\$61.65	\$14.75	\$16.15	\$0.00	\$92.55
	12/01/2026	\$63.09	\$14.75	\$16.15	\$0.00	\$93.99
For apprentice rates see "Apprentice- OPERATING ENGINEERS"						
TELECOMMUNICATION TECHNICIAN <i>ELECTRICIANS LOCAL 103</i>	03/01/2023	\$47.38	\$13.00	\$19.63	\$0.00	\$80.01

**Apprentice - TELECOMMUNICATION TECHNICIAN - Local 103**

**Effective Date - 03/01/2023**

Step	percent	Apprentice Base Wage	Health	Pension	Supplemental Unemployment	Total Rate
1	45	\$21.32	\$13.00	\$0.65	\$0.00	\$34.97
2	45	\$21.32	\$13.00	\$0.65	\$0.00	\$34.97
3	50	\$23.69	\$13.00	\$15.20	\$0.00	\$51.89
4	50	\$23.69	\$13.00	\$15.20	\$0.00	\$51.89
5	55	\$26.06	\$13.00	\$15.58	\$0.00	\$54.64
6	60	\$28.43	\$13.00	\$15.96	\$0.00	\$57.39
7	65	\$30.80	\$13.00	\$16.34	\$0.00	\$60.14
8	70	\$33.17	\$13.00	\$16.73	\$0.00	\$62.90
9	75	\$35.54	\$13.00	\$17.11	\$0.00	\$65.65
10	80	\$37.90	\$13.00	\$17.48	\$0.00	\$68.38

Notes:

Apprentice to Journeyworker Ratio:1:1

TERRAZZO FINISHERS <i>BRICKLAYERS LOCAL 3 - MARBLE &amp; TILE</i>	08/01/2023	\$61.34	\$11.49	\$22.34	\$0.00	\$95.17
	02/01/2024	\$62.59	\$11.49	\$22.34	\$0.00	\$96.42
	08/01/2024	\$64.69	\$11.49	\$22.34	\$0.00	\$98.52
	02/01/2025	\$65.99	\$11.49	\$22.34	\$0.00	\$99.82
	08/01/2025	\$68.14	\$11.49	\$22.34	\$0.00	\$101.97
	02/01/2026	\$69.49	\$11.49	\$22.34	\$0.00	\$103.32
	08/01/2026	\$71.69	\$11.49	\$22.34	\$0.00	\$105.52
	02/01/2027	\$73.09	\$11.49	\$22.34	\$0.00	\$106.92

Issue Date: 08/28/2023

Wage Request Number: 20230828-046

Page 35 of 39

Classification Effective Date Base Wage Health Pension Supplemental Unemployment Total Rate

**Apprentice - TERRAZZO FINISHER - Local 3 Marble & Tile**

Effective Date - 08/01/2023

Step	percent	Apprentice Base Wage	Health	Pension	Supplemental Unemployment	Total Rate
1	50	\$30.67	\$11.49	\$22.34	\$0.00	\$64.50
2	60	\$36.80	\$11.49	\$22.34	\$0.00	\$70.63
3	70	\$42.94	\$11.49	\$22.34	\$0.00	\$76.77
4	80	\$49.07	\$11.49	\$22.34	\$0.00	\$82.90
5	90	\$55.21	\$11.49	\$22.34	\$0.00	\$89.04

Effective Date - 02/01/2024

Step	percent	Apprentice Base Wage	Health	Pension	Supplemental Unemployment	Total Rate
1	50	\$31.30	\$11.49	\$22.34	\$0.00	\$65.13
2	60	\$37.55	\$11.49	\$22.34	\$0.00	\$71.38
3	70	\$43.81	\$11.49	\$22.34	\$0.00	\$77.64
4	80	\$50.07	\$11.49	\$22.34	\$0.00	\$83.90
5	90	\$56.33	\$11.49	\$22.34	\$0.00	\$90.16

Notes:

Apprentice to Journeyworker Ratio:1:3

TEST BORING DRILLER	06/01/2023	\$47.58	\$9.40	\$17.97	\$0.00	\$74.95
LABORERS - FOUNDATION AND MARINE	12/01/2023	\$48.83	\$9.40	\$17.97	\$0.00	\$76.20
	06/01/2024	\$50.31	\$9.40	\$17.97	\$0.00	\$77.68
	12/01/2024	\$51.78	\$9.40	\$17.97	\$0.00	\$79.15
	06/01/2025	\$53.28	\$9.40	\$17.97	\$0.00	\$80.65
	12/01/2025	\$54.78	\$9.40	\$17.97	\$0.00	\$82.15
	06/01/2026	\$56.33	\$9.40	\$17.97	\$0.00	\$83.70
	12/01/2026	\$57.83	\$9.40	\$17.97	\$0.00	\$85.20

For apprentice rates see "Apprentice- LABORER"

TEST BORING DRILLER HELPER	06/01/2023	\$43.70	\$9.40	\$17.97	\$0.00	\$71.07
LABORERS - FOUNDATION AND MARINE	12/01/2023	\$44.95	\$9.40	\$17.97	\$0.00	\$72.32
	06/01/2024	\$46.43	\$9.40	\$17.97	\$0.00	\$73.80
	12/01/2024	\$47.90	\$9.40	\$17.97	\$0.00	\$75.27
	06/01/2025	\$49.40	\$9.40	\$17.97	\$0.00	\$76.77
	12/01/2025	\$50.90	\$9.40	\$17.97	\$0.00	\$78.27
	06/01/2026	\$52.45	\$9.40	\$17.97	\$0.00	\$79.82
	12/01/2026	\$53.95	\$9.40	\$17.97	\$0.00	\$81.32

For apprentice rates see "Apprentice- LABORER"

Classification	Effective Date	Base Wage	Health	Pension	Supplemental Unemployment	Total Rate
TEST BORING LABORER <i>LABORERS - FOUNDATION AND MARINE</i>	06/01/2023	\$43.58	\$9.40	\$17.97	\$0.00	\$70.95
	12/01/2023	\$44.83	\$9.40	\$17.97	\$0.00	\$72.20
	06/01/2024	\$46.31	\$9.40	\$17.97	\$0.00	\$73.68
	12/01/2024	\$47.78	\$9.40	\$17.97	\$0.00	\$75.15
	06/01/2025	\$49.28	\$9.40	\$17.97	\$0.00	\$76.65
	12/01/2025	\$50.78	\$9.40	\$17.97	\$0.00	\$78.15
	06/01/2026	\$52.33	\$9.40	\$17.97	\$0.00	\$79.70
	12/01/2026	\$53.83	\$9.40	\$17.97	\$0.00	\$81.20
For apprentice rates see "Apprentice- LABORER"						
TRACTORS/PORTABLE STEAM GENERATORS <i>OPERATING ENGINEERS LOCAL 4</i>	06/01/2023	\$53.69	\$14.75	\$16.15	\$0.00	\$84.59
	12/01/2023	\$54.93	\$14.75	\$16.15	\$0.00	\$85.83
	06/01/2024	\$56.21	\$14.75	\$16.15	\$0.00	\$87.11
	12/01/2024	\$57.65	\$14.75	\$16.15	\$0.00	\$88.55
	06/01/2025	\$58.93	\$14.75	\$16.15	\$0.00	\$89.83
	12/01/2025	\$60.37	\$14.75	\$16.15	\$0.00	\$91.27
	06/01/2026	\$61.65	\$14.75	\$16.15	\$0.00	\$92.55
	12/01/2026	\$63.09	\$14.75	\$16.15	\$0.00	\$93.99
For apprentice rates see "Apprentice- OPERATING ENGINEERS"						
TRAILERS FOR EARTH MOVING EQUIPMENT <i>TEAMSTERS JOINT COUNCIL NO. 10 ZONE A</i>	12/01/2021	\$37.92	\$13.41	\$16.01	\$0.00	\$67.34
TUNNEL WORK - COMPRESSED AIR <i>LABORERS (COMPRESSED AIR)</i>	06/01/2023	\$55.81	\$9.40	\$18.42	\$0.00	\$83.63
	12/01/2023	\$57.06	\$9.40	\$18.42	\$0.00	\$84.88
	06/01/2024	\$58.54	\$9.40	\$18.42	\$0.00	\$86.36
	12/01/2024	\$60.01	\$9.40	\$18.42	\$0.00	\$87.83
	06/01/2025	\$61.51	\$9.40	\$18.42	\$0.00	\$89.33
	12/01/2025	\$63.01	\$9.40	\$18.42	\$0.00	\$90.83
	06/01/2026	\$64.56	\$9.40	\$18.42	\$0.00	\$92.38
	12/01/2026	\$66.06	\$9.40	\$18.42	\$0.00	\$93.88
For apprentice rates see "Apprentice- LABORER"						
TUNNEL WORK - COMPRESSED AIR (HAZ. WASTE) <i>LABORERS (COMPRESSED AIR)</i>	06/01/2023	\$57.81	\$9.40	\$18.42	\$0.00	\$85.63
	12/01/2023	\$59.06	\$9.40	\$18.42	\$0.00	\$86.88
	06/01/2024	\$60.54	\$9.40	\$18.42	\$0.00	\$88.36
	12/01/2024	\$62.01	\$9.40	\$18.42	\$0.00	\$89.83
	06/01/2025	\$63.51	\$9.40	\$18.42	\$0.00	\$91.33
	12/01/2025	\$65.01	\$9.40	\$18.42	\$0.00	\$92.83
	06/01/2026	\$66.56	\$9.40	\$18.42	\$0.00	\$94.38
	12/01/2026	\$68.06	\$9.40	\$18.42	\$0.00	\$95.88
For apprentice rates see "Apprentice- LABORER"						
TUNNEL WORK - FREE AIR <i>LABORERS (FREE AIR TUNNEL)</i>	06/01/2023	\$47.88	\$9.40	\$18.42	\$0.00	\$75.70
	12/01/2023	\$49.13	\$9.40	\$18.42	\$0.00	\$76.95
	06/01/2024	\$50.61	\$9.40	\$18.42	\$0.00	\$78.43
	12/01/2024	\$52.08	\$9.40	\$18.42	\$0.00	\$79.90
	06/01/2025	\$53.58	\$9.40	\$18.42	\$0.00	\$81.40
	12/01/2025	\$55.08	\$9.40	\$18.42	\$0.00	\$82.90
	06/01/2026	\$56.63	\$9.40	\$18.42	\$0.00	\$84.45
	12/01/2026	\$58.13	\$9.40	\$18.42	\$0.00	\$85.95
For apprentice rates see "Apprentice- LABORER"						

Issue Date: 08/28/2023

Wage Request Number: 20230828-046

Page 37 of 39

Classification	Effective Date	Base Wage	Health	Pension	Supplemental Unemployment	Total Rate
TUNNEL WORK - FREE AIR (HAZ. WASTE) <i>LABORERS (FREE AIR TUNNEL)</i>	06/01/2023	\$49.88	\$9.40	\$18.42	\$0.00	\$77.70
	12/01/2023	\$51.13	\$9.40	\$18.42	\$0.00	\$78.95
	06/01/2024	\$52.61	\$9.40	\$18.42	\$0.00	\$80.43
	12/01/2024	\$54.08	\$9.40	\$18.42	\$0.00	\$81.90
	06/01/2025	\$55.58	\$9.40	\$18.42	\$0.00	\$83.40
	12/01/2025	\$57.08	\$9.40	\$18.42	\$0.00	\$84.90
	06/01/2026	\$58.63	\$9.40	\$18.42	\$0.00	\$86.45
	12/01/2026	\$60.13	\$9.40	\$18.42	\$0.00	\$87.95
For apprentice rates see "Apprentice- LABORER"						
VAC-HAUL <i>TEAMSTERS JOINT COUNCIL NO. 10 ZONE A</i>	12/01/2021	\$37.34	\$13.41	\$16.01	\$0.00	\$66.76
WAGON DRILL OPERATOR <i>LABORERS - ZONE 1</i>	06/01/2023	\$43.83	\$9.40	\$17.82	\$0.00	\$71.05
	12/01/2023	\$45.08	\$9.40	\$17.82	\$0.00	\$72.30
For apprentice rates see "Apprentice- LABORER"						
WAGON DRILL OPERATOR (HEAVY & HIGHWAY) <i>LABORERS - ZONE 1 (HEAVY &amp; HIGHWAY)</i>	06/01/2023	\$43.83	\$9.40	\$17.82	\$0.00	\$71.05
	12/01/2023	\$45.08	\$9.40	\$17.82	\$0.00	\$72.30
	06/01/2024	\$46.56	\$9.40	\$17.82	\$0.00	\$73.78
	12/01/2024	\$48.03	\$9.40	\$17.82	\$0.00	\$75.25
	06/01/2025	\$49.53	\$9.40	\$17.82	\$0.00	\$76.75
	12/01/2025	\$51.03	\$9.40	\$17.82	\$0.00	\$78.25
	06/01/2026	\$52.58	\$9.40	\$17.82	\$0.00	\$79.80
	12/01/2026	\$54.08	\$9.40	\$17.82	\$0.00	\$81.30
For apprentice rates see "Apprentice- LABORER (Heavy and Highway)"						
WASTE WATER PUMP OPERATOR <i>OPERATING ENGINEERS LOCAL 4</i>	06/01/2023	\$54.28	\$14.75	\$16.15	\$0.00	\$85.18
	12/01/2023	\$55.53	\$14.75	\$16.15	\$0.00	\$86.43
	06/01/2024	\$56.83	\$14.75	\$16.15	\$0.00	\$87.73
	12/01/2024	\$58.28	\$14.75	\$16.15	\$0.00	\$89.18
	06/01/2025	\$59.58	\$14.75	\$16.15	\$0.00	\$90.48
	12/01/2025	\$61.03	\$14.75	\$16.15	\$0.00	\$91.93
	06/01/2026	\$62.33	\$14.75	\$16.15	\$0.00	\$93.23
	12/01/2026	\$63.78	\$14.75	\$16.15	\$0.00	\$94.68
For apprentice rates see "Apprentice- OPERATING ENGINEERS"						
WATER METER INSTALLER <i>PLUMBERS &amp; GASFITTERS LOCAL 12</i>	02/26/2023	\$64.69	\$14.07	\$18.86	\$0.00	\$97.62
	09/03/2023	\$66.44	\$14.07	\$18.86	\$0.00	\$99.37
	03/03/2024	\$68.24	\$14.07	\$18.86	\$0.00	\$101.17
	09/01/2024	\$70.04	\$14.07	\$18.86	\$0.00	\$102.97
	03/02/2025	\$71.84	\$14.07	\$18.86	\$0.00	\$104.77
For apprentice rates see "Apprentice- PLUMBER/PIPEFITTER" or "PLUMBER/GASFITTER"						

Additional Apprentice Information:

Minimum wage rates for apprentices employed on public works projects are listed above as a percentage of the pre-determined hourly wage rate established by the Commissioner under the provisions of the M.G.L. c. 149, ss. 26-27D. Apprentice ratios are established by the Division of Apprenticeship Training pursuant to M.G.L. c. 23, ss. 11E-11L.

All apprentices must be registered with the Division of Apprenticeship Training in accordance with M.G.L. c. 23, ss. 11E-11L.

All steps are six months (1000 hours.)

Ratios are expressed in allowable number of apprentices to journeymen or fraction thereof, unless otherwise specified.

\*\* Multiple ratios are listed in the comment field.

\*\*\* APP to JM: 1:1, 2:2, 2:3, 3:4, 4:4, 4:5, 4:6, 5:7, 6:7, 6:8, 6:9, 7:10, 8:10, 8:11, 8:12, 9:13, 10:13, 10:14, etc.

\*\*\*\* APP to JM: 1:1, 1:2, 2:3, 2:4, 3:5, 4:6, 4:7, 5:8, 6:9, 6:10, 7:11, 8:12, 8:13, 9:14, 10:15, 10:16, etc.

Wage



# **The Massachusetts Prevailing Wage Law**

## **M.G.L. ch. 149, §§ 26 – 27**

### **NOTICE TO AWARDING AUTHORITIES**

- The enclosed wage schedule applies only to the specific project listed at the top and will be updated for any public construction project lasting longer than one (1) year.
- You should request an updated wage schedule from the Division of Occupational Safety if you have not opened bids or selected a contractor within 90 days of the date of issuance of the enclosed wage schedule.
- The wage schedule shall be incorporated in any advertisement or call for bids for the project for which it has been issued.
- Once a contractor has been selected by the awarding authority, the wage schedule shall be made a part of the contract for that project.

### **NOTICE TO CONTRACTORS**

- The enclosed wage schedule, and any updated schedule, must be posted in a conspicuous place at the work site during the life of the project.
- The wages listed on the enclosed wage schedule must be paid to employees on public works projects regardless of whether they are employed by the prime contractor, a filed sub-bidder, or any sub-contractor.
- The enclosed wage schedule applies to all phases of the project including the final clean-up. Contractors whose only role is to perform final clean-up must pay their employees according to this wage schedule.
- All apprentices must be registered with the Massachusetts Division of Apprentice Training in order to be paid at the reduced apprentice rates. If a worker is not registered with the Division of Apprentice Training, they must be paid the “total rate” listed on the wage schedule regardless of experience or skill level. For further information, please call (617) 727-3486 or write to the Division of Apprentice Training, 399 Washington Street, 4th Floor, Boston, MA 02108

# WEEKLY PAYROLL RECORDS REPORT

## & STATEMENT OF COMPLIANCE

In accordance with Massachusetts General Law c149, §27B, a true and accurate record must be kept of all persons employed on the public works project for which the enclosed rates have been provided. A Payroll Form has been printed on the reverse of this page and includes all the information required to be kept by law. Every contractor or subcontractor is required to keep these records and preserve them for a period of three years from the date of completion of the contract.

In addition, every contractor and subcontractor is required to submit a copy of their weekly payroll records to the awarding authority. This is required to be done on a weekly basis. Once collected, the awarding authority is also required to preserve those records for three years.

In addition, each such contractor, subcontractor or public body shall furnish to the Department of Labor & Workforce Development/Division of Occupational Safety within fifteen days after completion of its portion of the work a statement, executed by the contractor, subcontractor or public body who supervises the payment of wages, in the following form:

## STATEMENT OF COMPLIANCE

\_\_\_\_\_, 2023

I, \_\_\_\_\_,

(Name of signatory party) (Title)

do hereby state:

That I pay or supervise the payment of the persons employed by

\_\_\_\_\_ on the \_\_\_\_\_

(Contractor, subcontractor or public body) (Building or project)

and that all mechanics and apprentices, teamsters, chauffeurs and laborers employed on said project have been paid in accordance with wages determined under the provisions of sections twenty-six and twenty-seven of chapter one hundred and forty nine of the General Laws.

Signature \_\_\_\_\_

Title \_\_\_\_\_

DIVISION OF OCCUPATIONAL SAFETY, 399 WASHINGTON STREET, 5TH FL., BOSTON, MA. 02108

