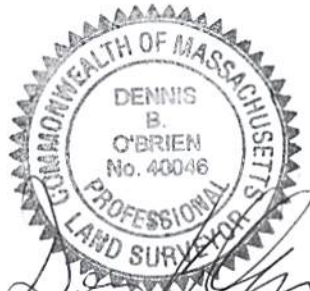
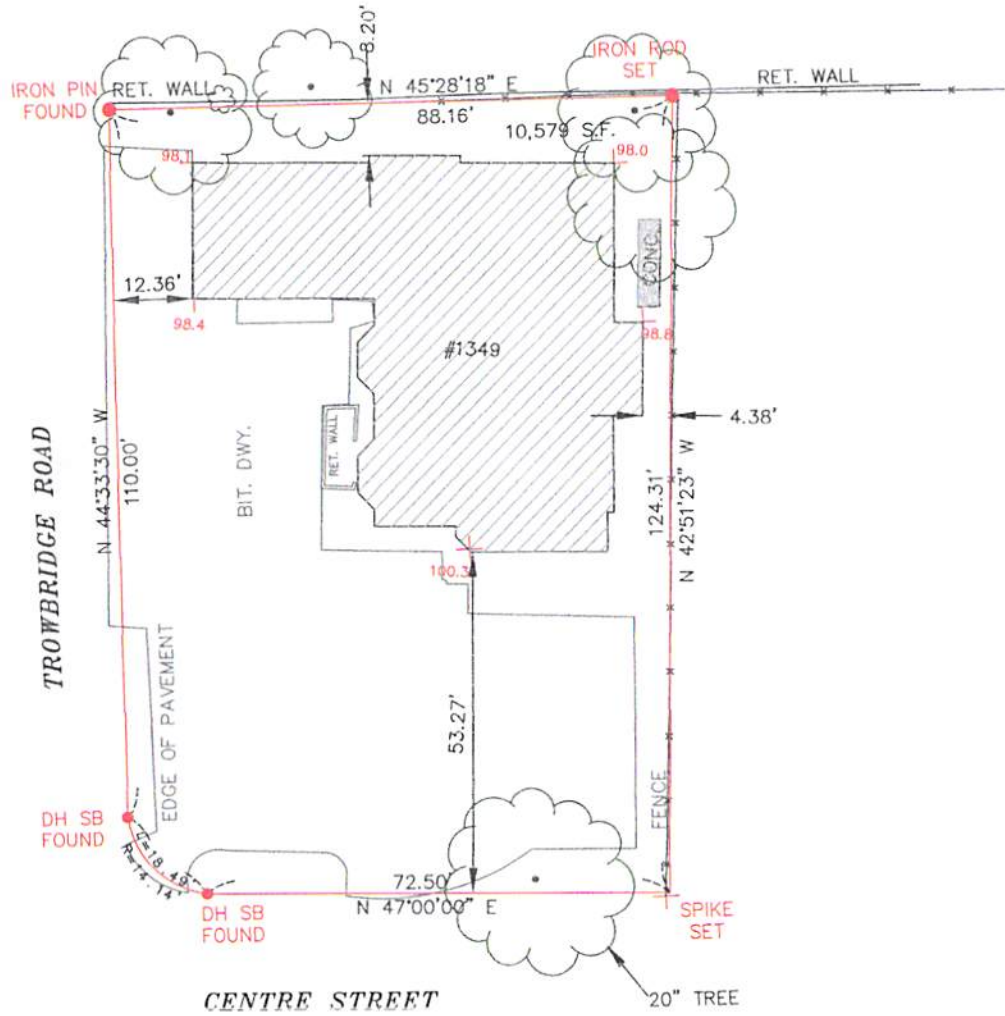




EXISTING LOT COVERAGE 27.7% (2,934 S.F.)
 EXISTING OPEN SPACE 23.0% (2,433 S.F.)



Dennis O'Brien P.L.S.



D. O'BRIEN
LAND SURVEYING

EST. 1996
 31 HAYWARD STREET UNIT 3-G
 FRANKLIN, MA 02038 508-541-0048

PLAN SHOWING EXISTING CONDITIONS
 1349 CENTRE STREET
 NEWTON, MA MIDDLESEX COUNTY

SCALE: 1: 30	DATE: 4/20/2015	REVISED: ---	DRAWN BY: WNL	CHECKED BY: D.O.
-----------------	--------------------	-----------------	------------------	---------------------