



Newton Parks, Recreation, & Culture Department

Memorial Playground at Oak Hill Park

Community Meeting

November 1, 2023





Memorial Playground

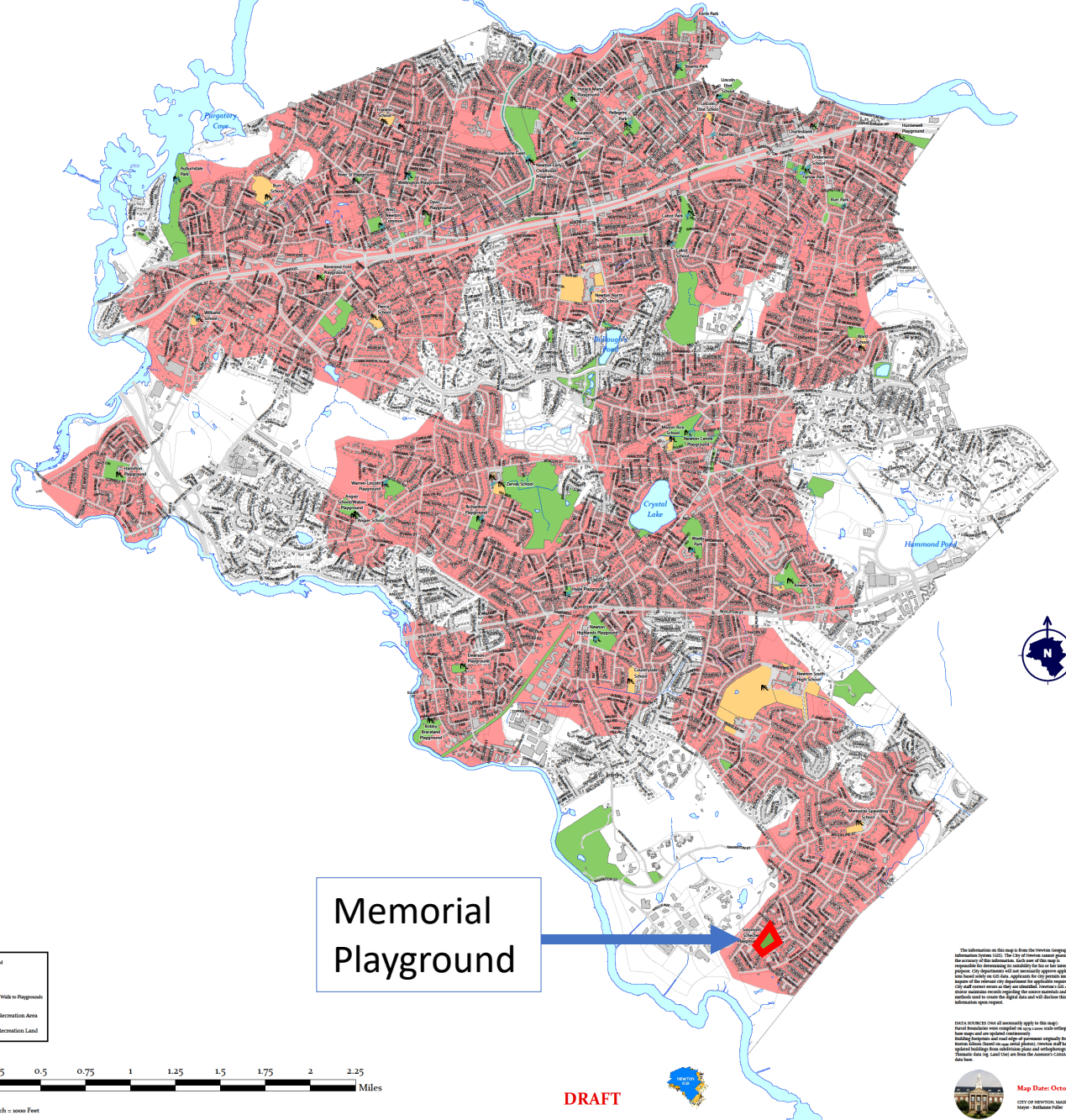
Goals

- **Replace aging Playground**
- **Improve accessibility & Inclusion**
- **Provide Safe, Fun Play Space**



Areas Within a 15 Minute Walk from Playgrounds

City of Newton, Massachusetts



Memorial Playground

- Playground
- To Line
- 15 Minute Walk to Playgrounds
- Park or Recreation Area
- School Recreation Land



Map Scale: 1 inch = 1000 Feet

DRAFT

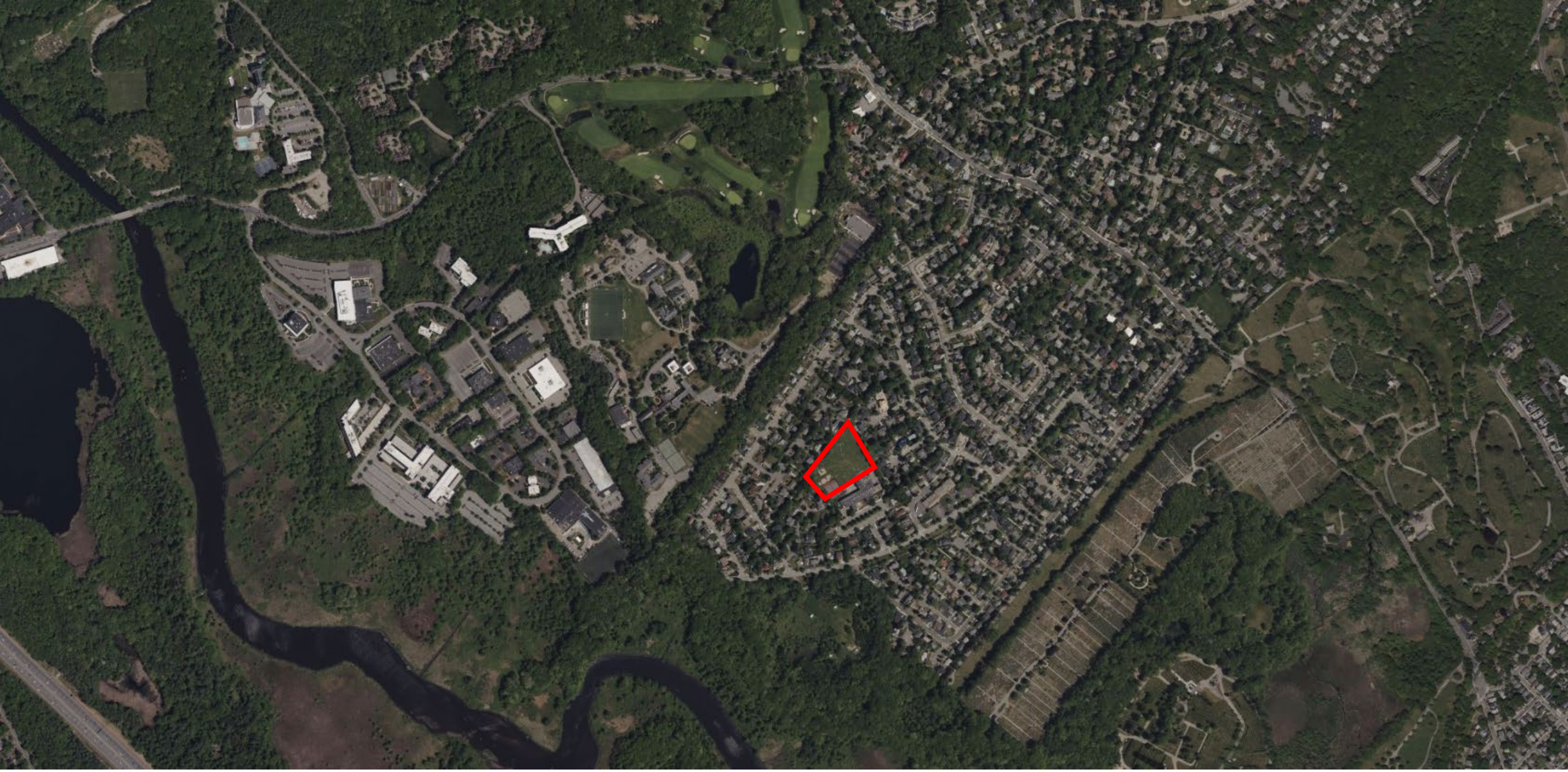
The information on this map is from the Intersect Geographic Information System (GIS). The City of Newton cannot guarantee the accuracy of this information. Each user of this map is responsible for determining its suitability for their intended purpose. GIS Applications will not necessarily require application and may not be used for any other purpose. The City of Newton is not responsible for any errors or omissions that may appear on this map. Users are advised to consult with the City of Newton before using this information for any purpose.



Map Date: October 24, 2003
CITY OF NEWTON, MASSACHUSETTS
Intersect Version 1.0



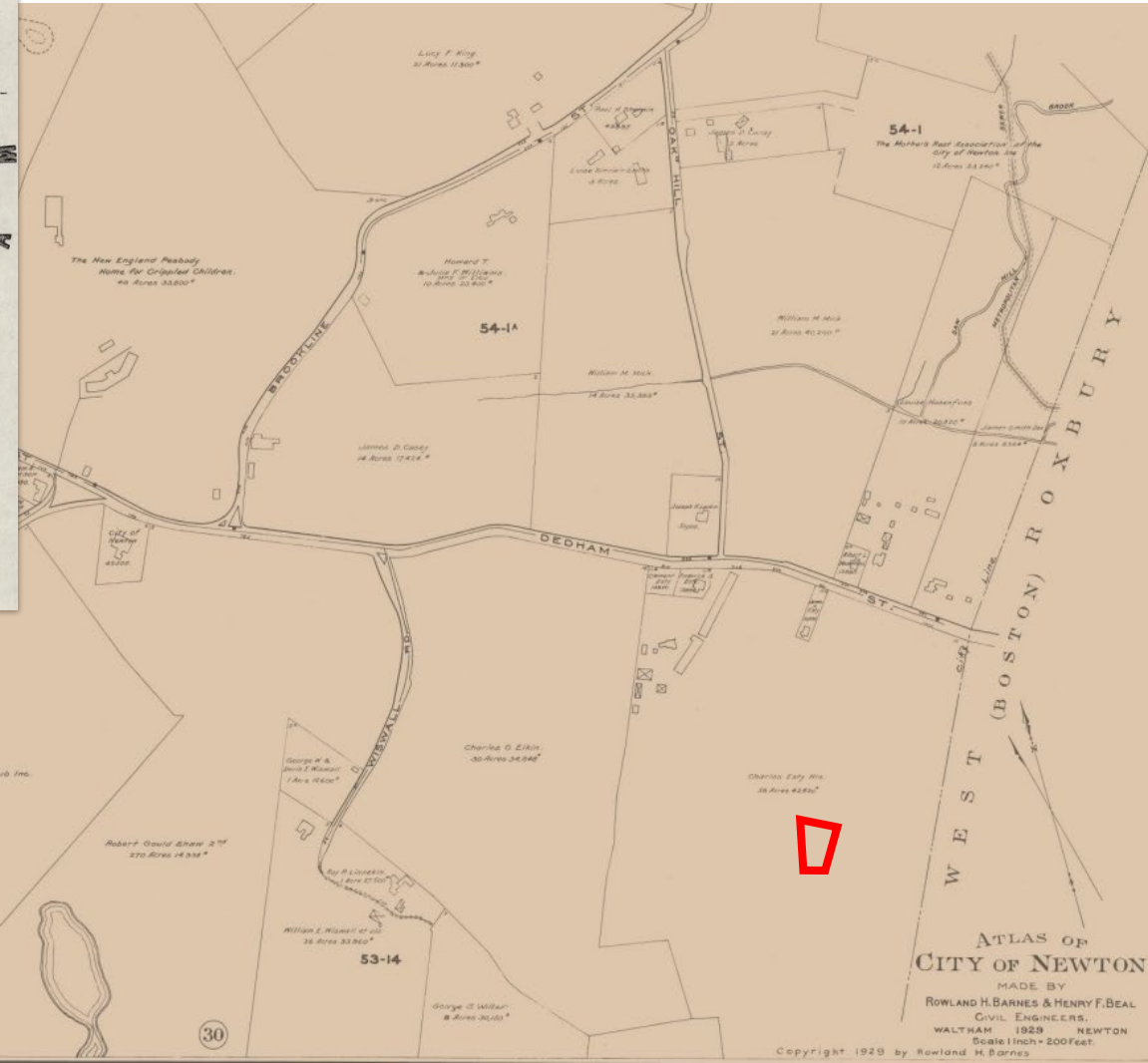
NEWTON
Parks, Recreation & Culture



Oak Hill is surrounded by a lot of open space, but just one City of Newton public park.



Historic maps show the area of Oak Hill to have been part of a larger marsh, and then as part of a larger farm, before being developed into a neighborhood in the 1940s.



Memorial Park has always been open space for its neighborhood.

Memorial Park-Overview

- 3.0 acres
- Abutting Solomon Schechter Day School
- Centrally-located among mostly single-family neighborhood
- Connections to multiple walking/biking paths
- Open lawn area/multi-purpose practice field
- Backstop
- 2 Tennis courts
- Perimeter tree plantings
- Metal shade shelter





Memorial Playground – Large Elements



Existing swing set



The main playscape was installed in 1996 and is due for an upgrade to keep up with current playground standards.

Memorial Playground – Secondary Elements



Structures do not meet playground standards

Playground Surface Conditions



Great connection to pathway. Expanding accessibility is a primary goal.

Memorial Playground – Backstop



Memorial Playground – Tennis Courts



What's your favorite part of the playground area?

- Central play structure?
- Swings?
- Grass field?
- Tennis court?
- Benches?
- Open space?



Example of
Inclusive
possibilities





Questions? Comments?

*For additional Comments and input, please email us at: Parks@newtonma.gov
or visit us at: www.newtonma.gov/parkprojects*