

# Franklin Elementary School

NEWTON, MA

## Designer Review Committee

February 14, 2024

H M

F H

H M F H ARCHITECTS

# DRC & Working Group Comments

What we've heard....

- Desire to simplify massing/ avoid excess cost
- Clarify main entrance sequence/ view to doors
- Consider where to locate stair tower
  - Easier access to roof
  - A way to demarcate entry
- Continued abbuter concern on siting of new building



When asked to share their top three descriptors of Franklin Elementary School's culture of teaching, learning, and community, faculty members responded by creating the following word cloud. Those descriptors appearing in a larger font size were mentioned most frequently by participants.

# Agenda

- Exteriors
  - Massing
  - Elevations (Window Pattern)
  - Materials
- Updated Site and Floor Plans
- Interior Views

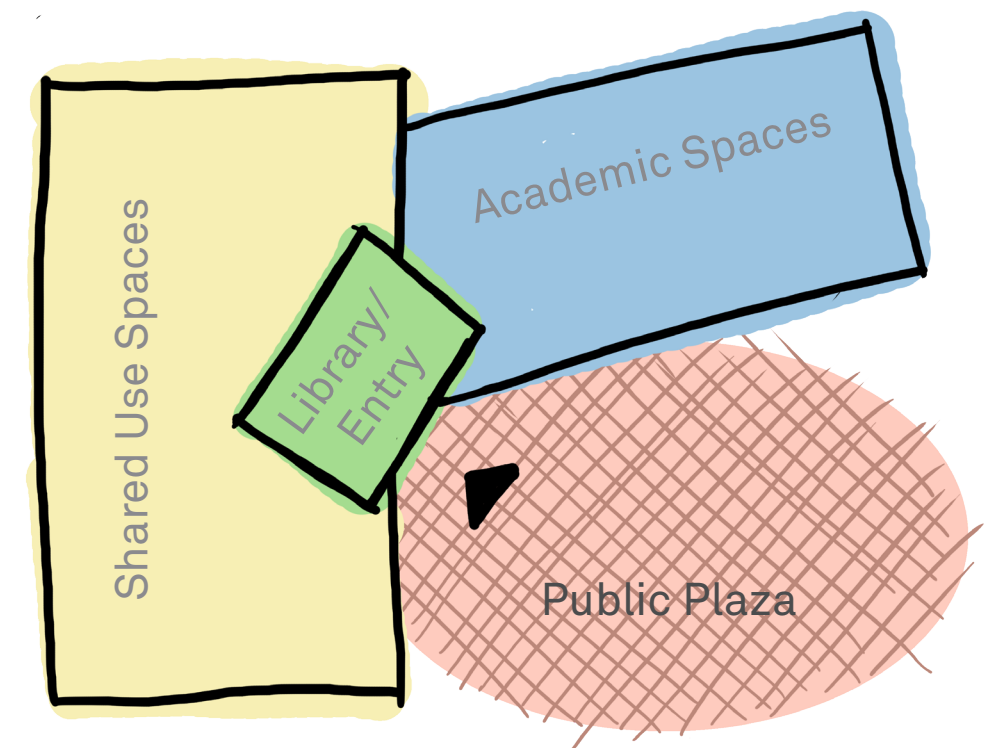


# Project Statistics

## of Current Scheme

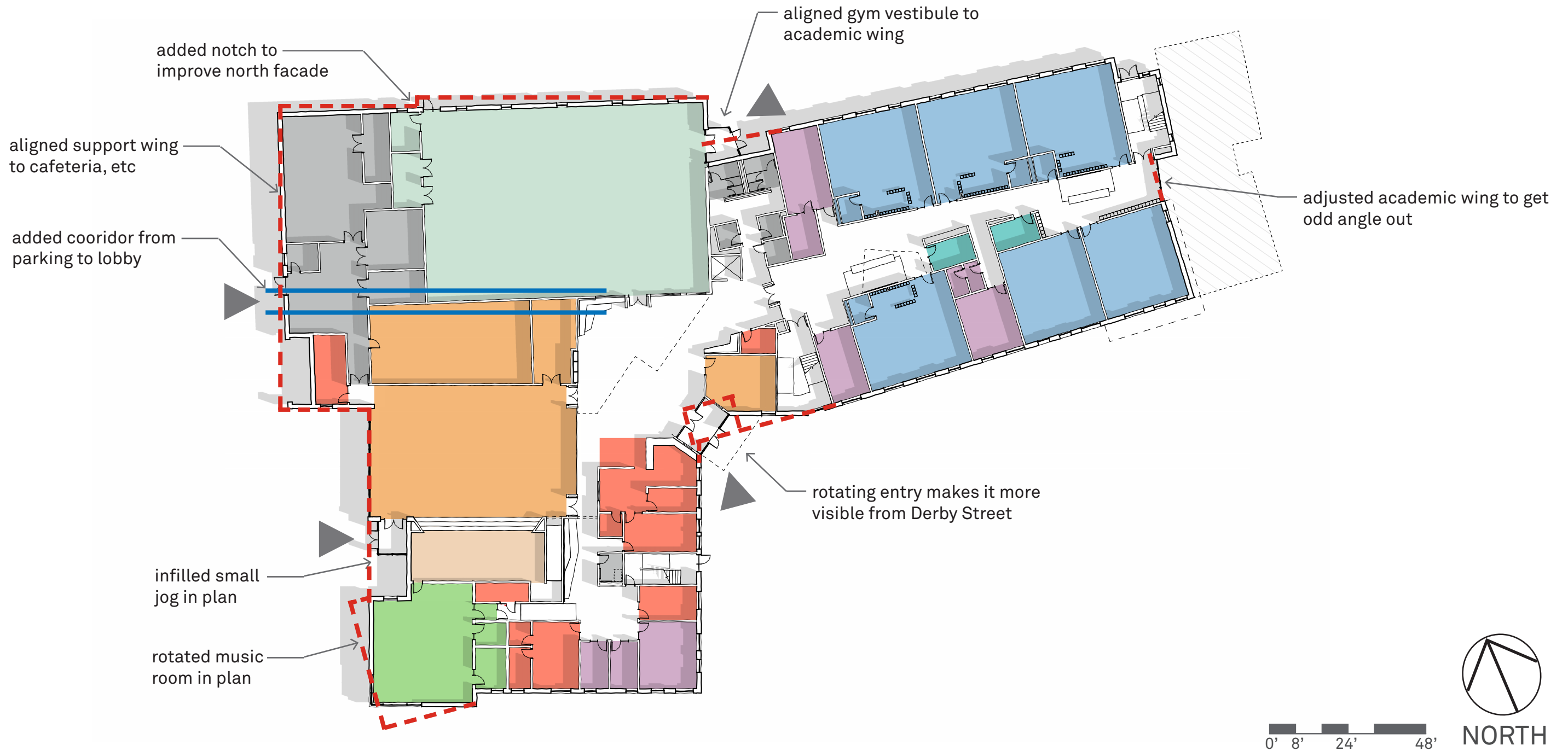
- Enrollment - 396 students
- Design meets all program requirements - size of spaces and adjacencies
  - Program Net SF: 47,265 NSF
  - Gross Sf: 70,898 SF
  - Net to Gross Ratio : 1.5
- Exterior window to wall ratio - 21%
- Target EUI - 25kBtu/sf/year
- Systems BoD: Ground source heat pump, variable refrigerant flow
- Zero combustion/ all electric

Parti (*noun*) the basic general scheme of an architectural design





# Plan Simplification Diagram



# View from Drop-off

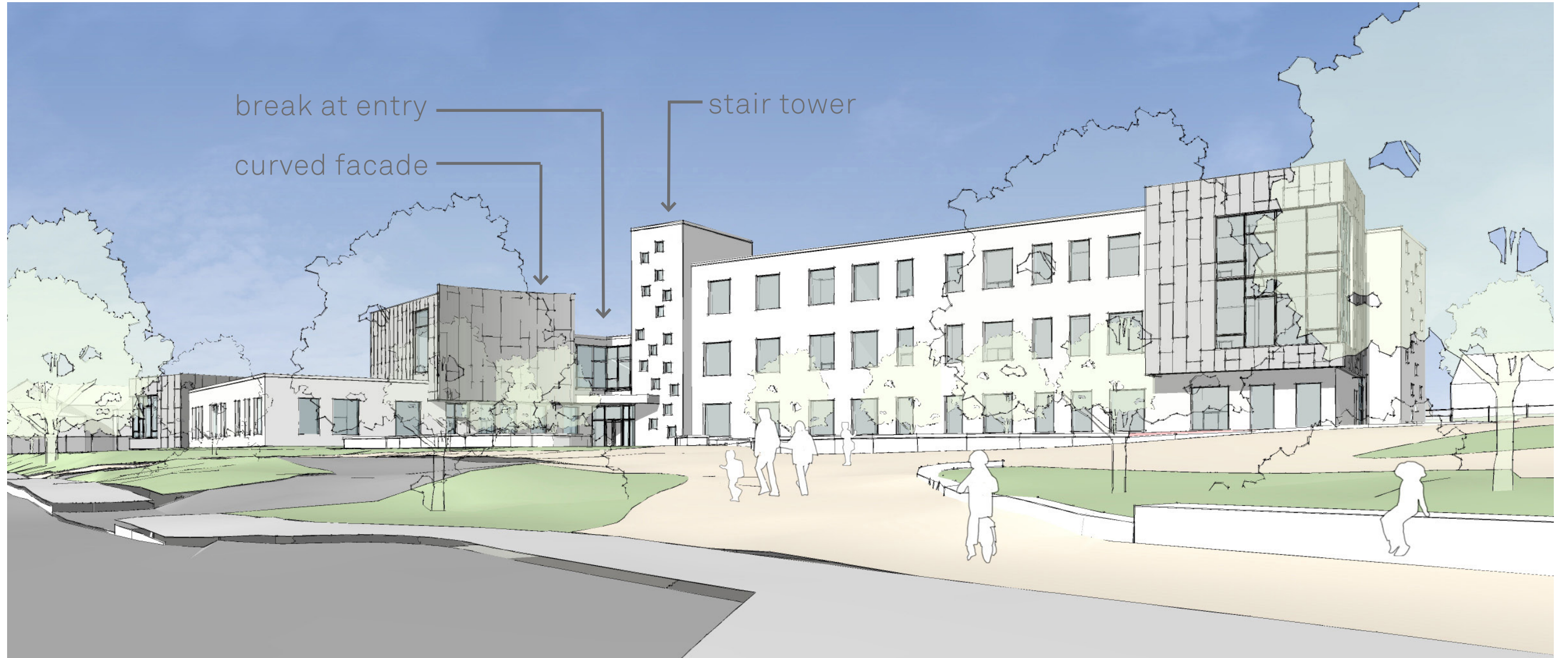
Unique Angle Option





# View from Drop-off

Curved Option



# View from Drop-off

Multiple alignment Option





# Elevation Option A

Down Shifted Windows



# Elevation Option B

Side to Side Windows





# Elevation Option C

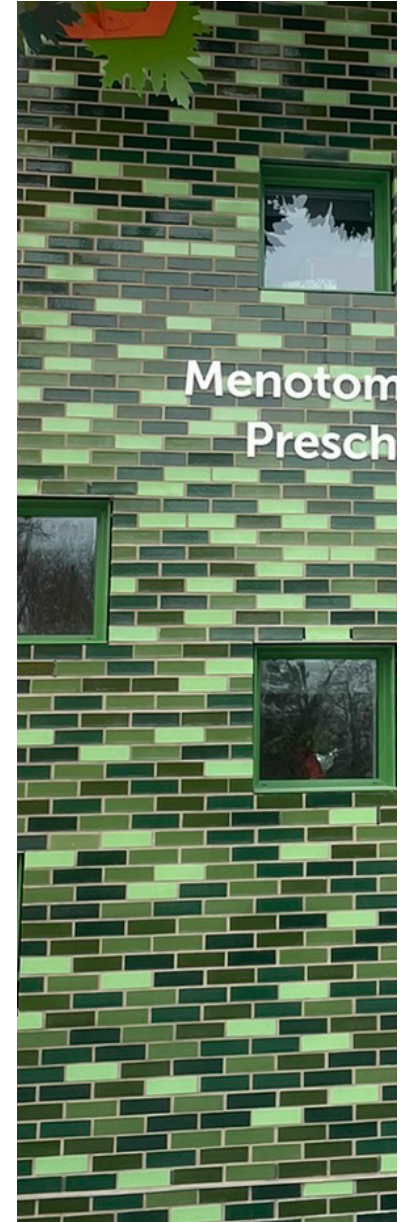
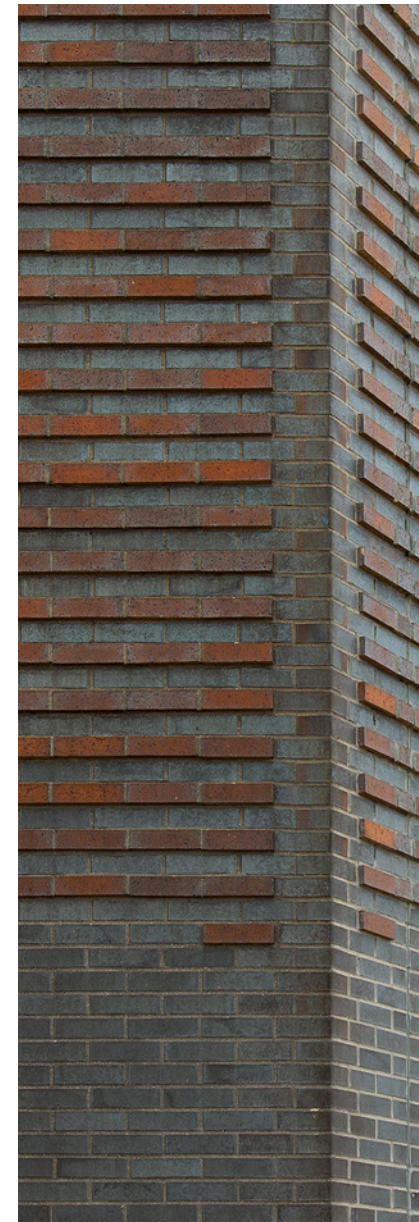
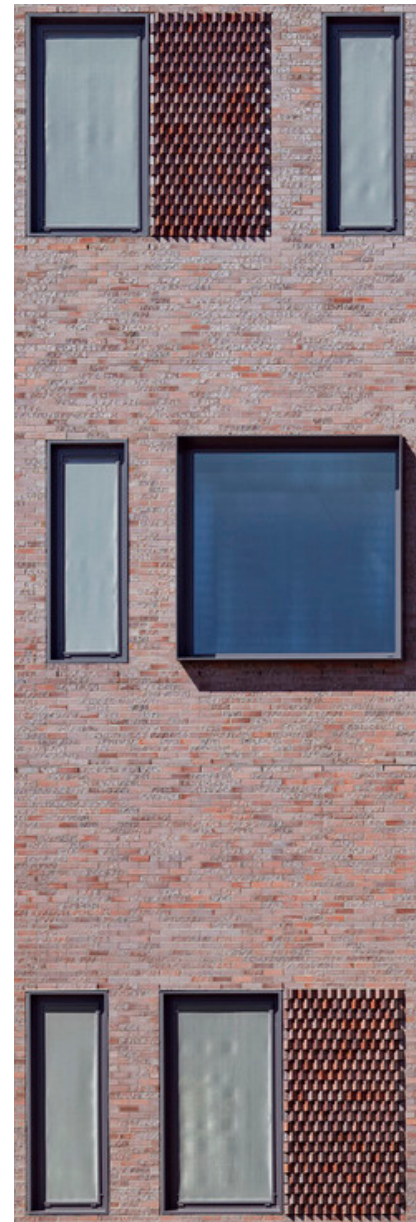
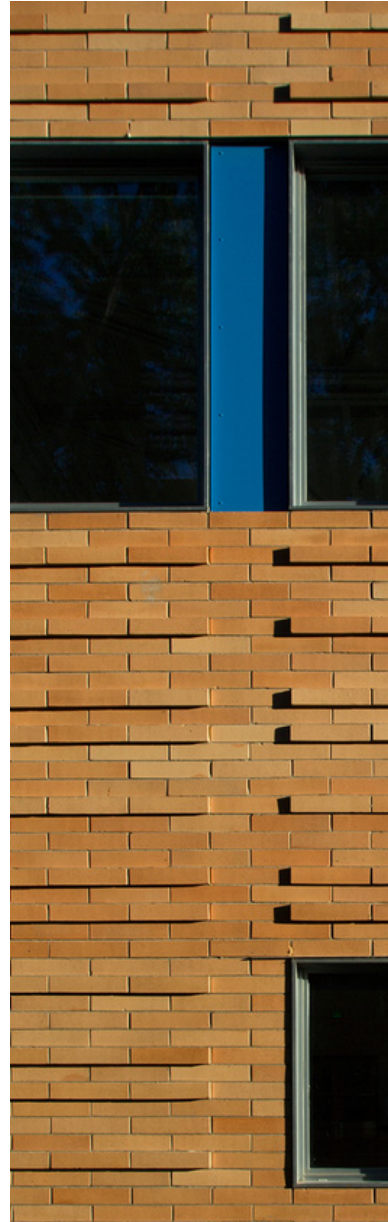
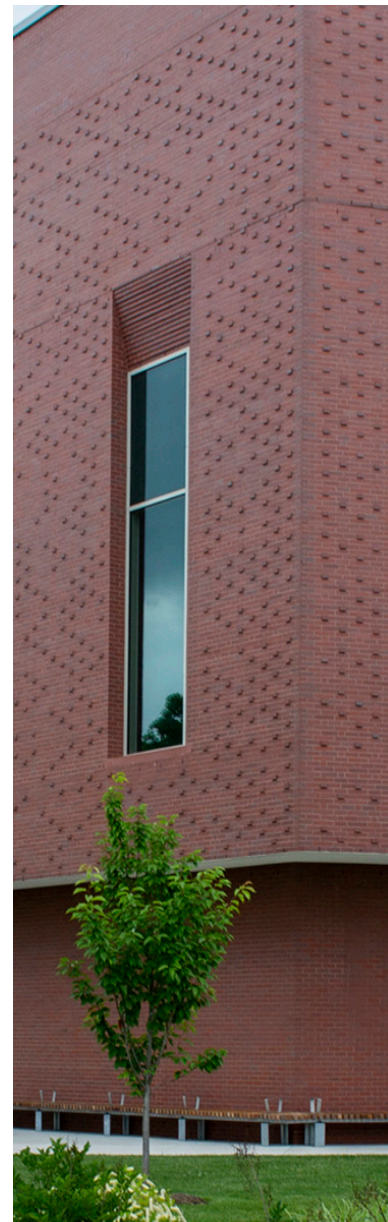
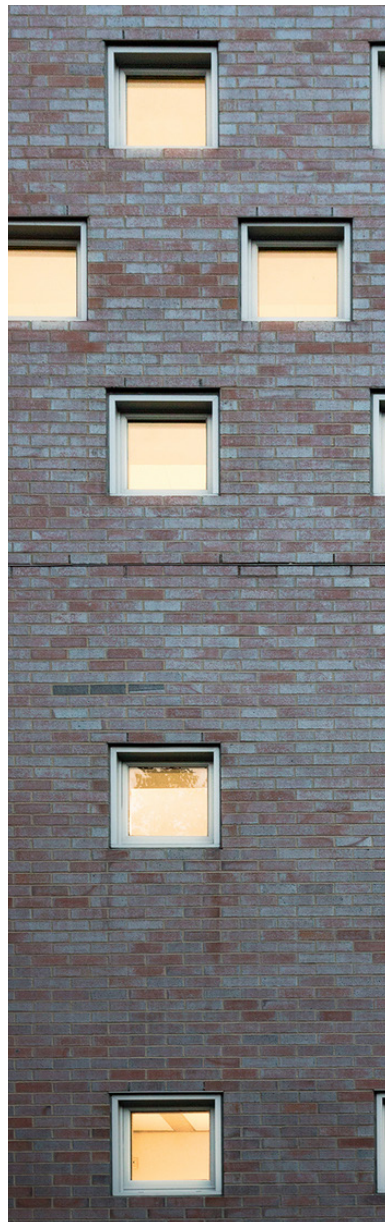
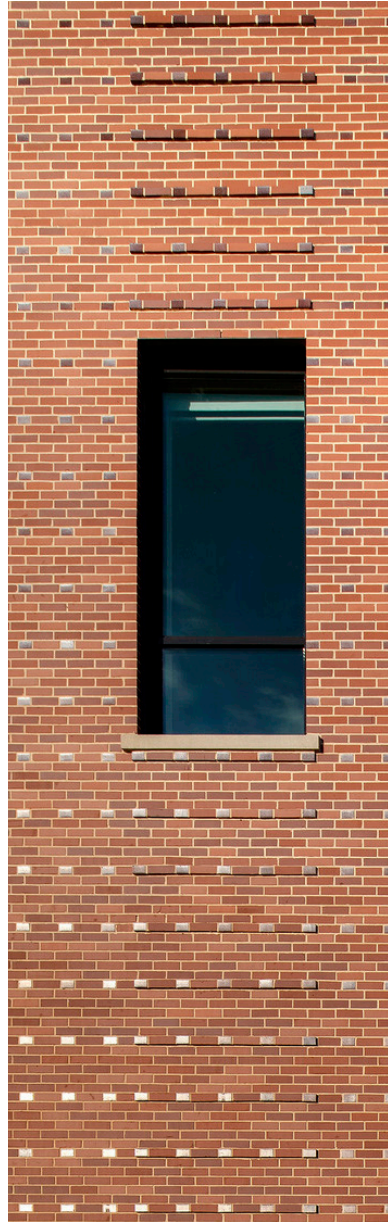
## Playful Windows





# Exterior Envelope Materials Palette

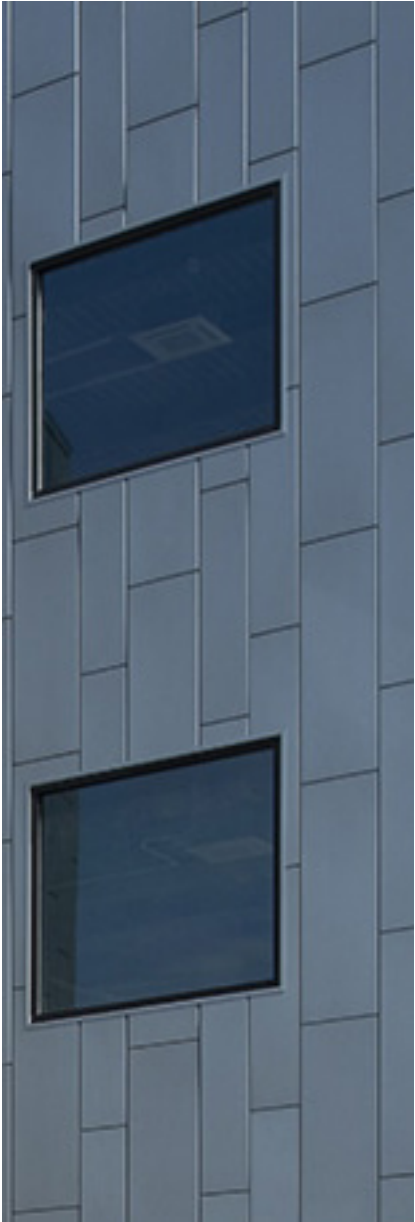
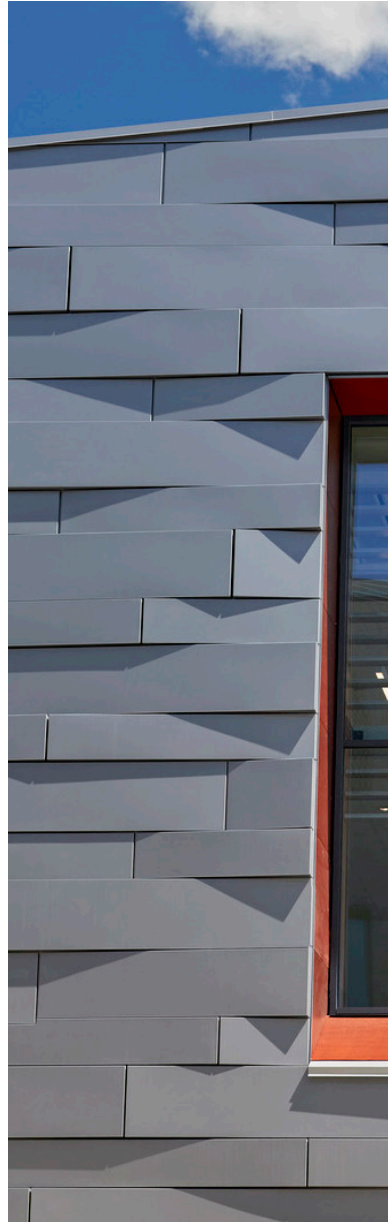
## Brick





# Exterior Envelope Materials Palette

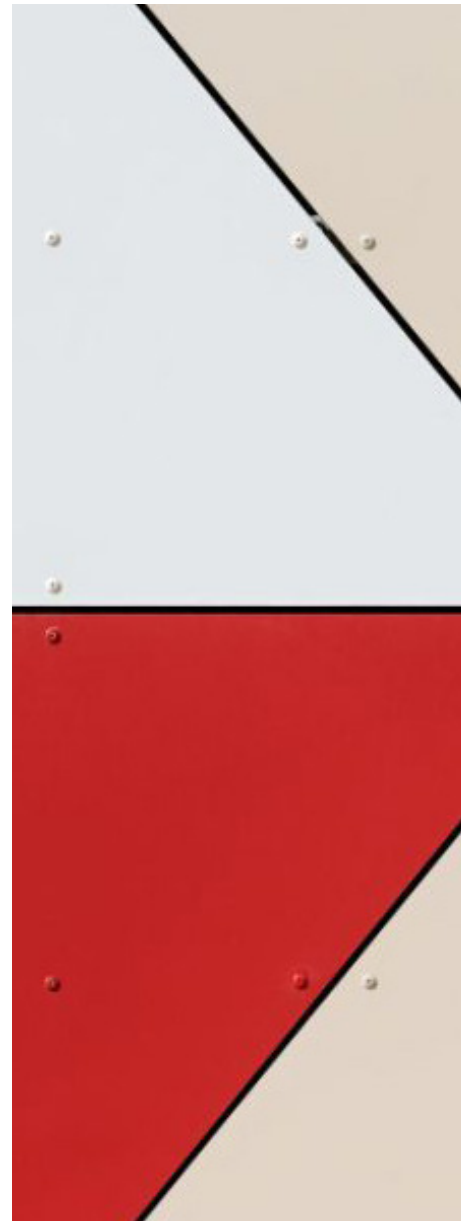
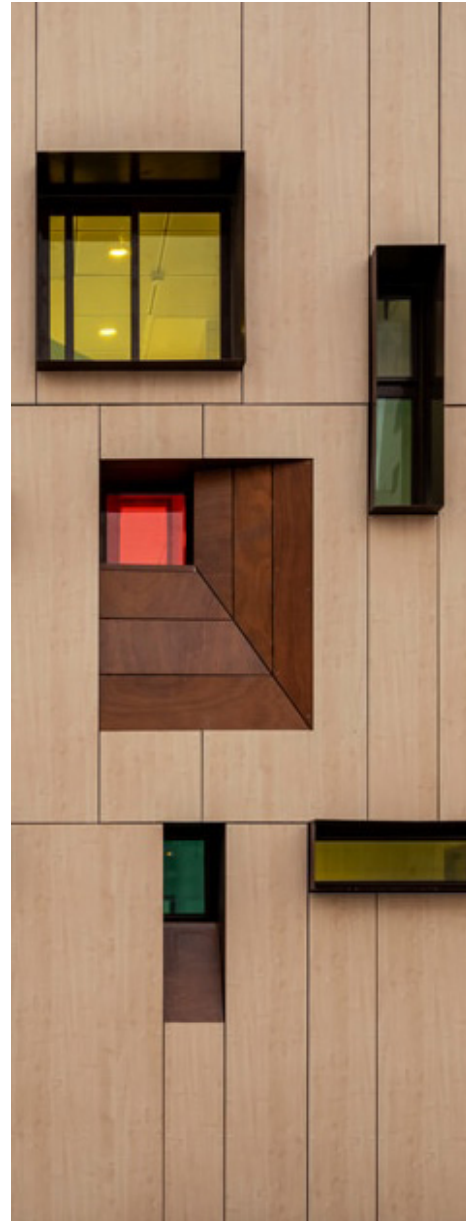
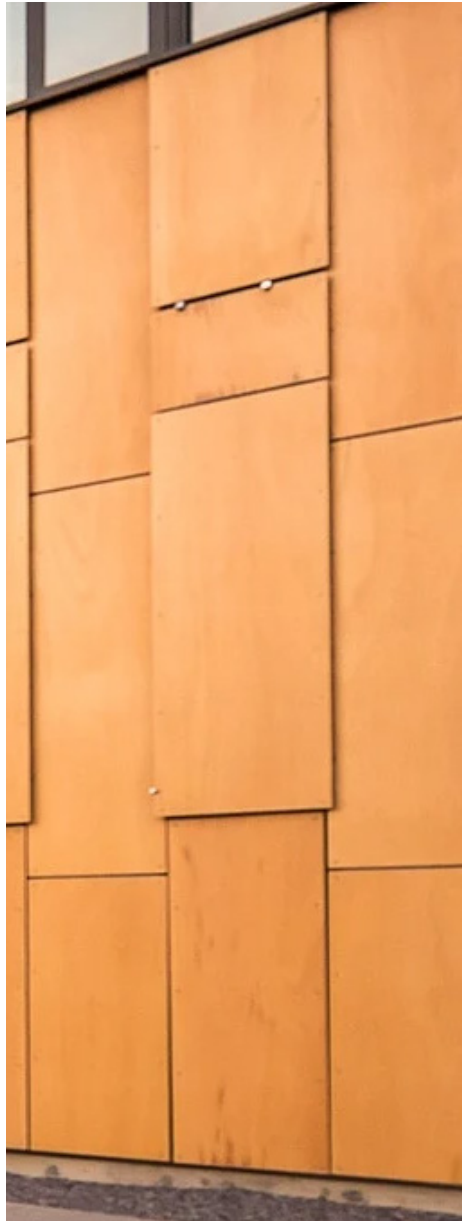
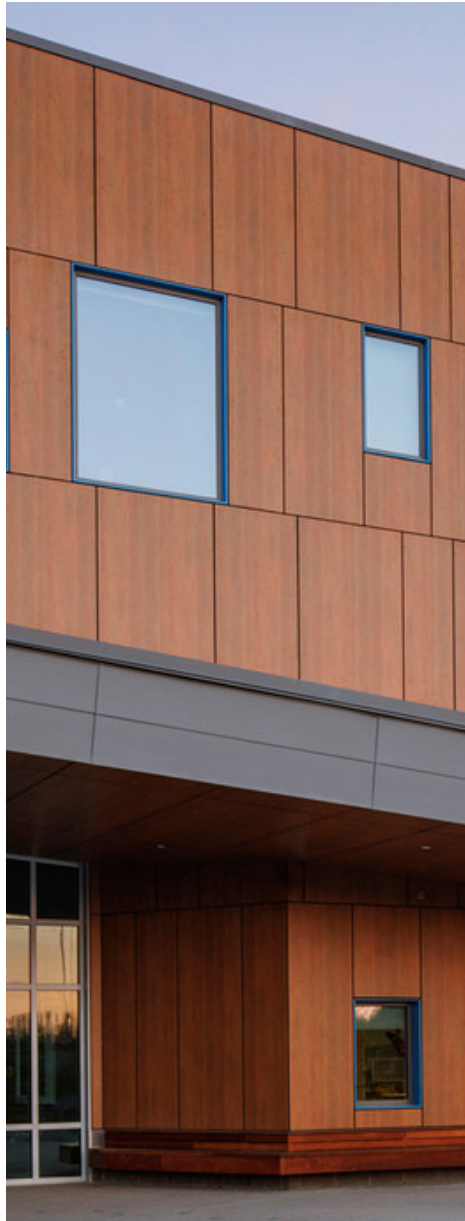
## Metal Rainscreen





# Exterior Envelope Materials Palette

## Phenolic Panels





# Elevation Option A

## Material Concept 1





# Elevation Option A

## Material Concept 2





# Elevation Option B

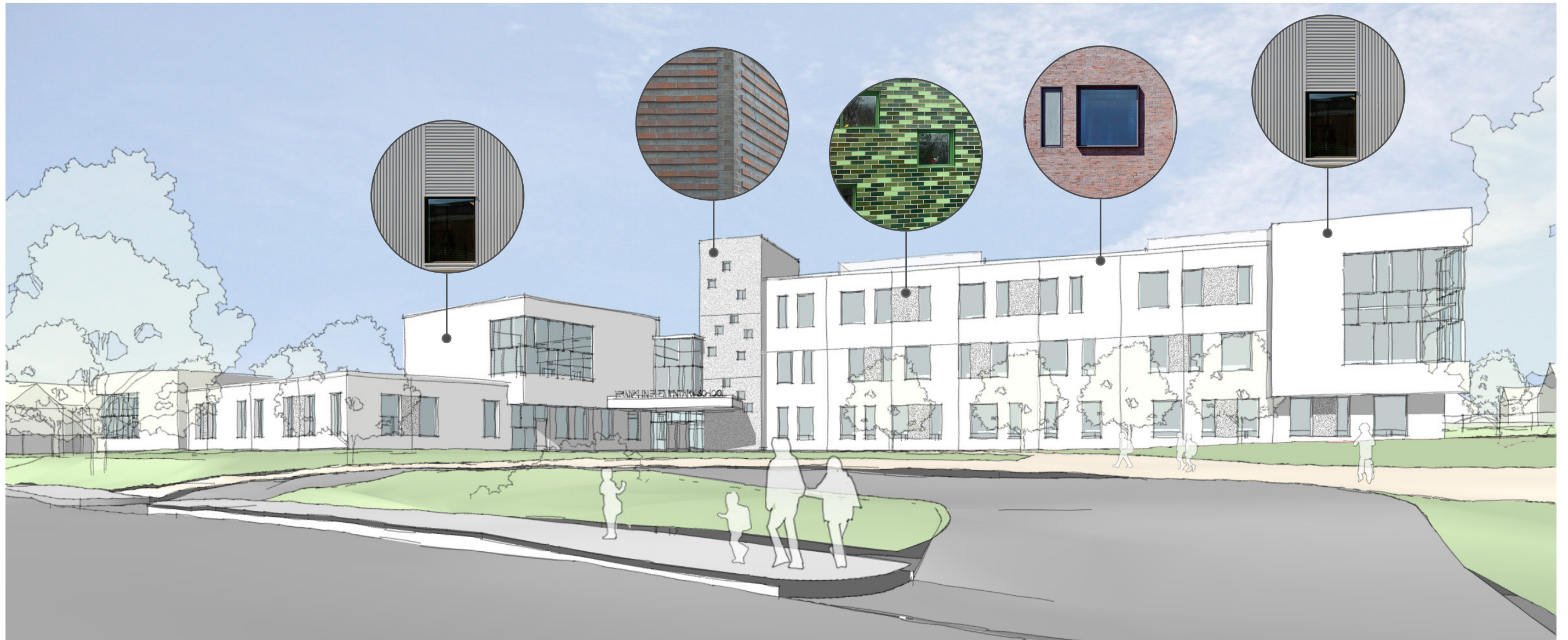
## Material Concept 1





# Elevation Option B

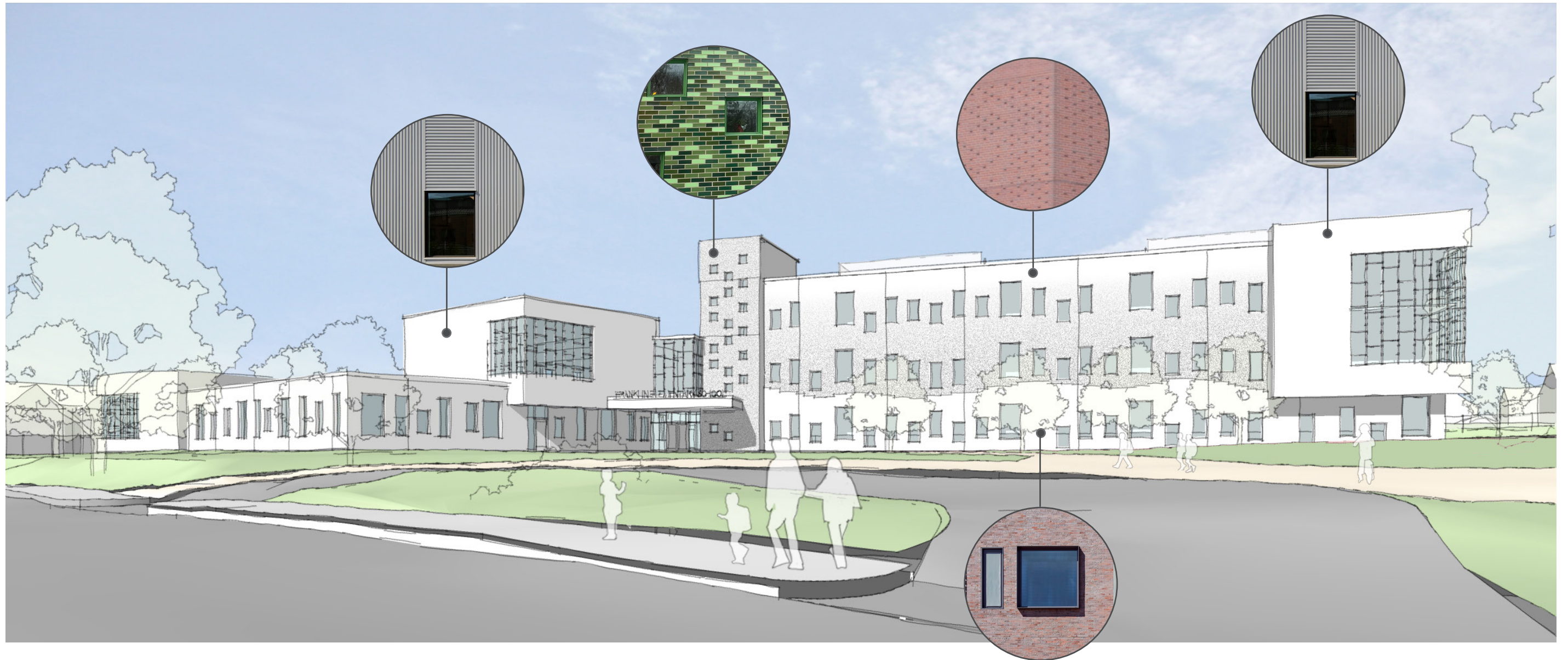
## Material Concept 2





# Elevation Option C

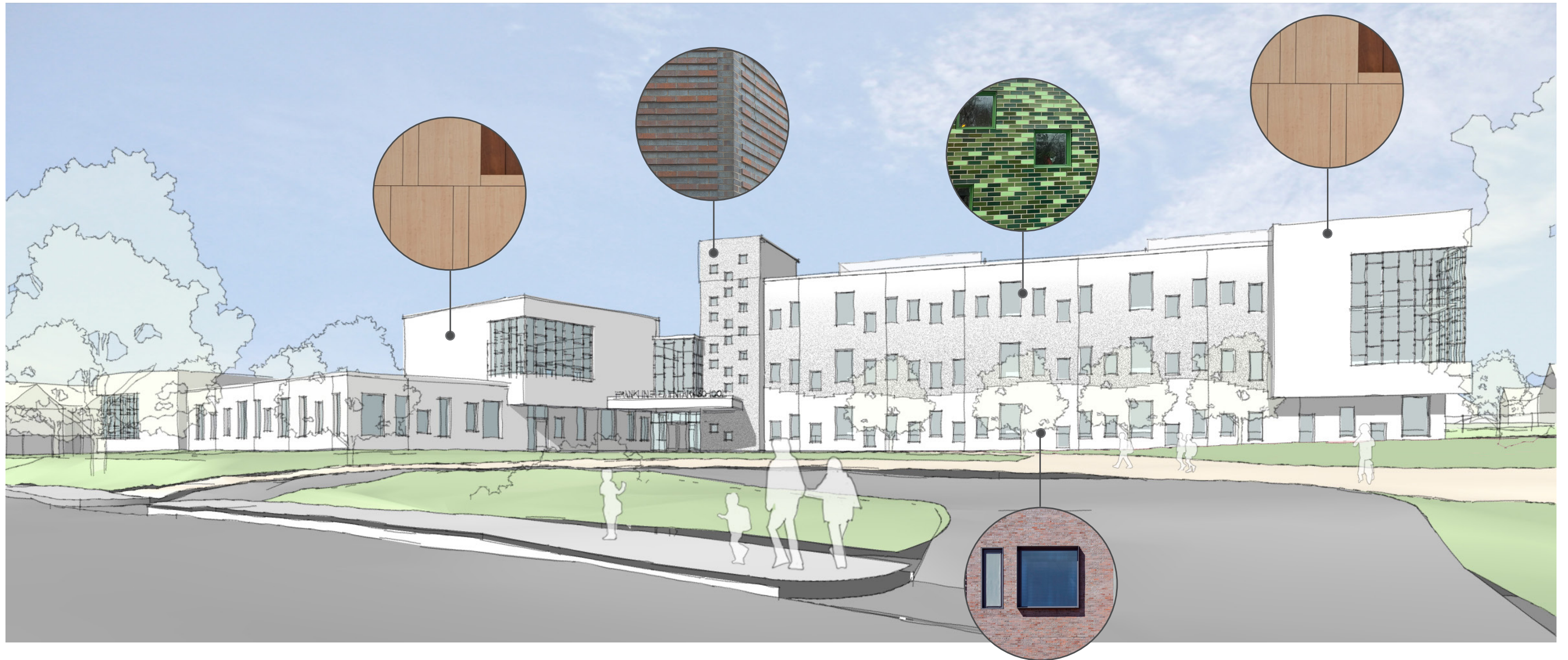
## Material Concept 1





# Elevation Option C

## Material Concept 2





# View from Drop-off

with materials 1



# View from Drop-off

with materials 2





# Site Option A2



RUSSELL ROAD

CLARK ROAD

CHERRY STREET

DERBY STREET

BUS

PASSENGER  
VEHICLE

0' 20' 40' 80'

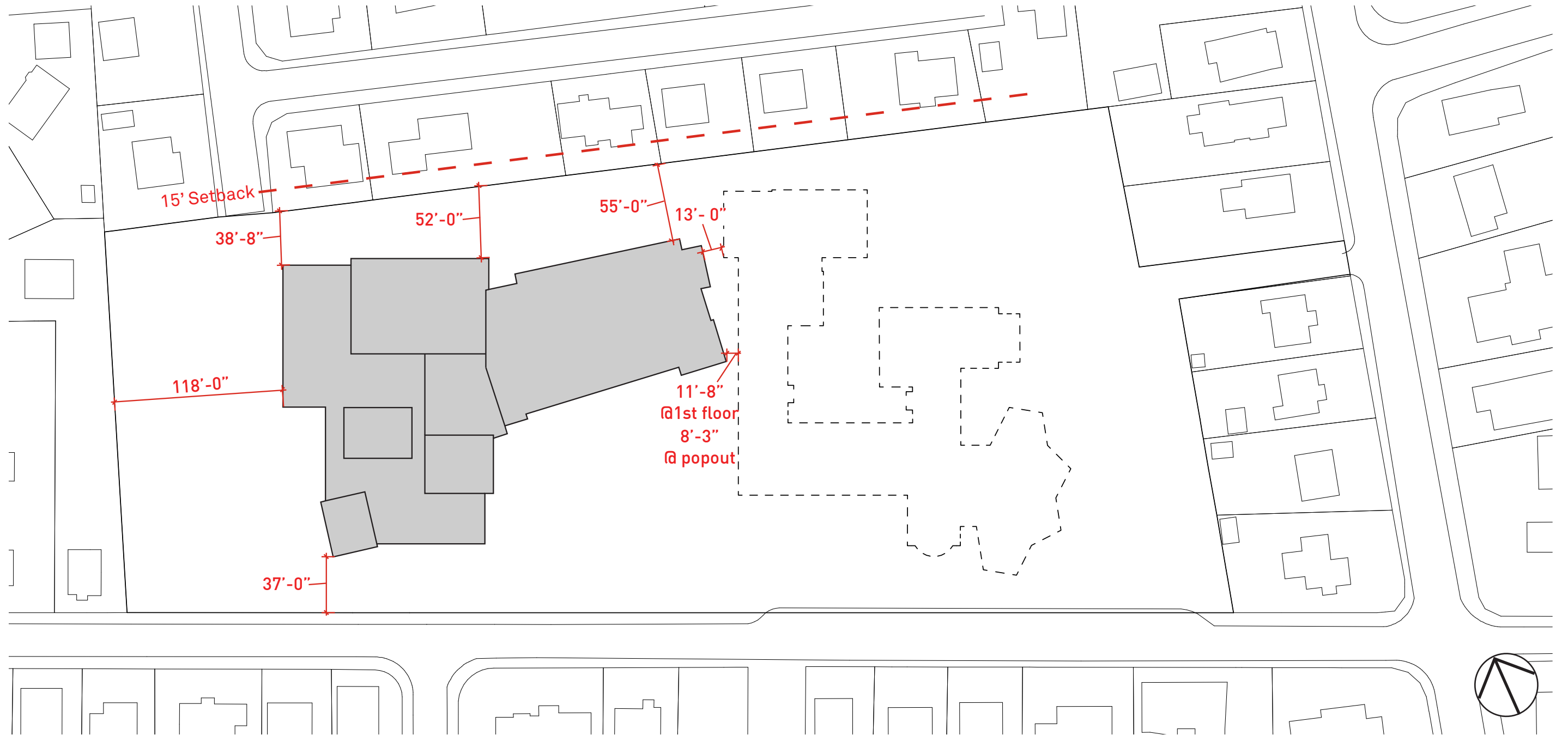


PERSH

HOWAR

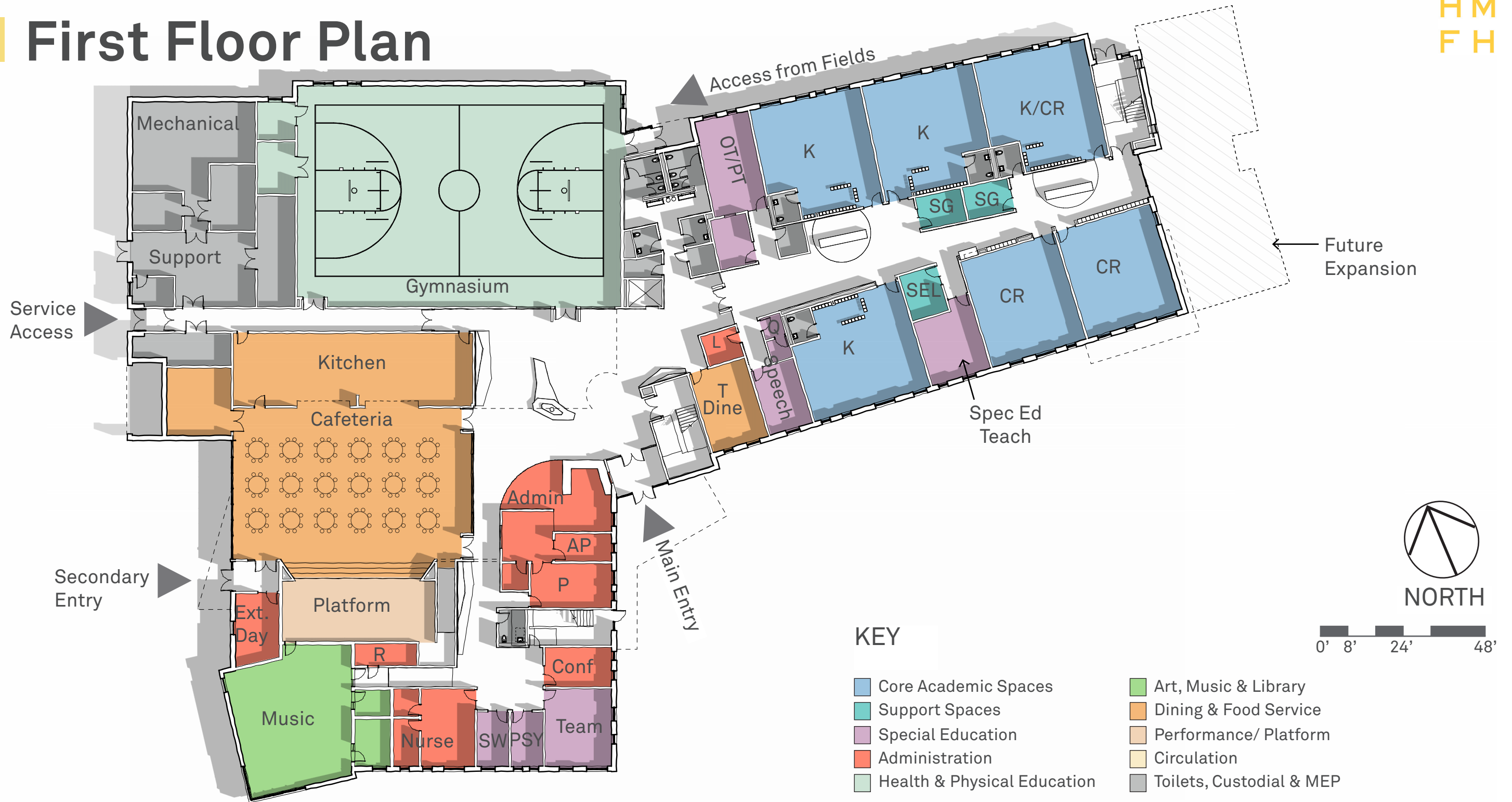


# Site Location Diagram





# First Floor Plan

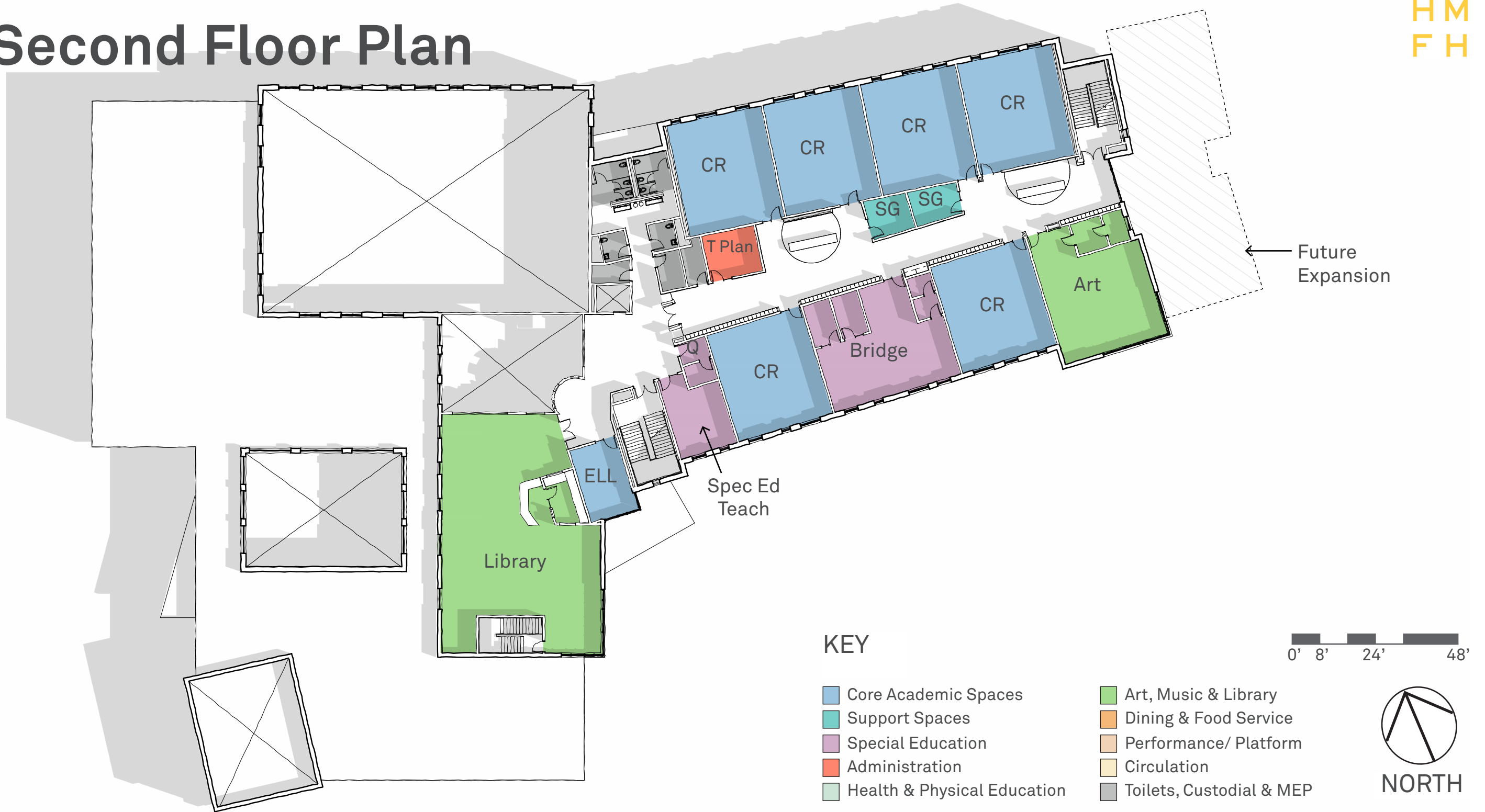


## KEY

- Core Academic Spaces
- Support Spaces
- Special Education
- Administration
- Health & Physical Education
- Art, Music & Library
- Dining & Food Service
- Performance/ Platform
- Circulation
- Toilets, Custodial & MEP



# Second Floor Plan



Future Expansion

Spec Ed Teach

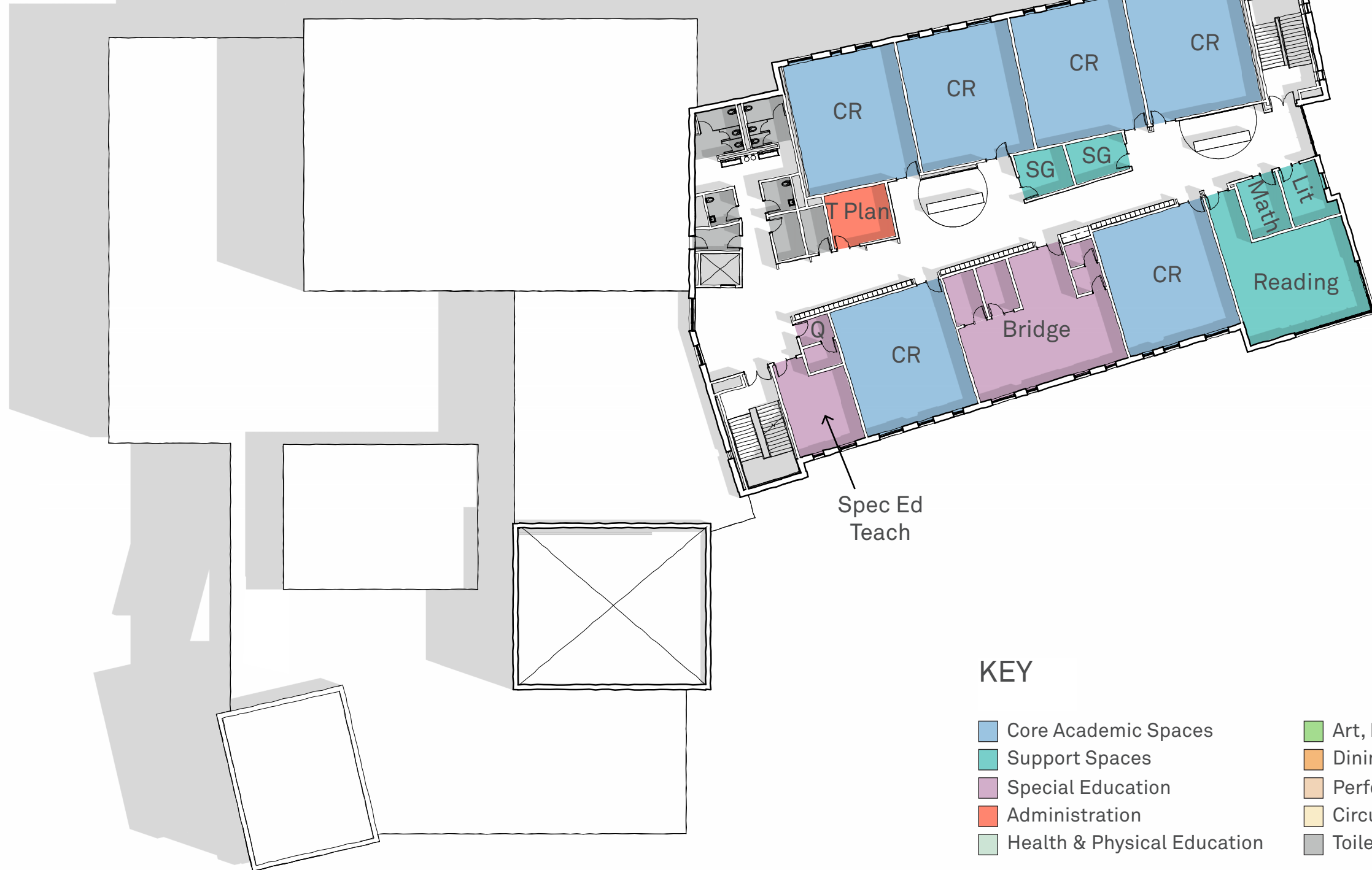
### KEY

- Core Academic Spaces
- Support Spaces
- Special Education
- Administration
- Health & Physical Education
- Art, Music & Library
- Dining & Food Service
- Performance/ Platform
- Circulation
- Toilets, Custodial & MEP







# Third Floor Plan



Spec Ed Teach

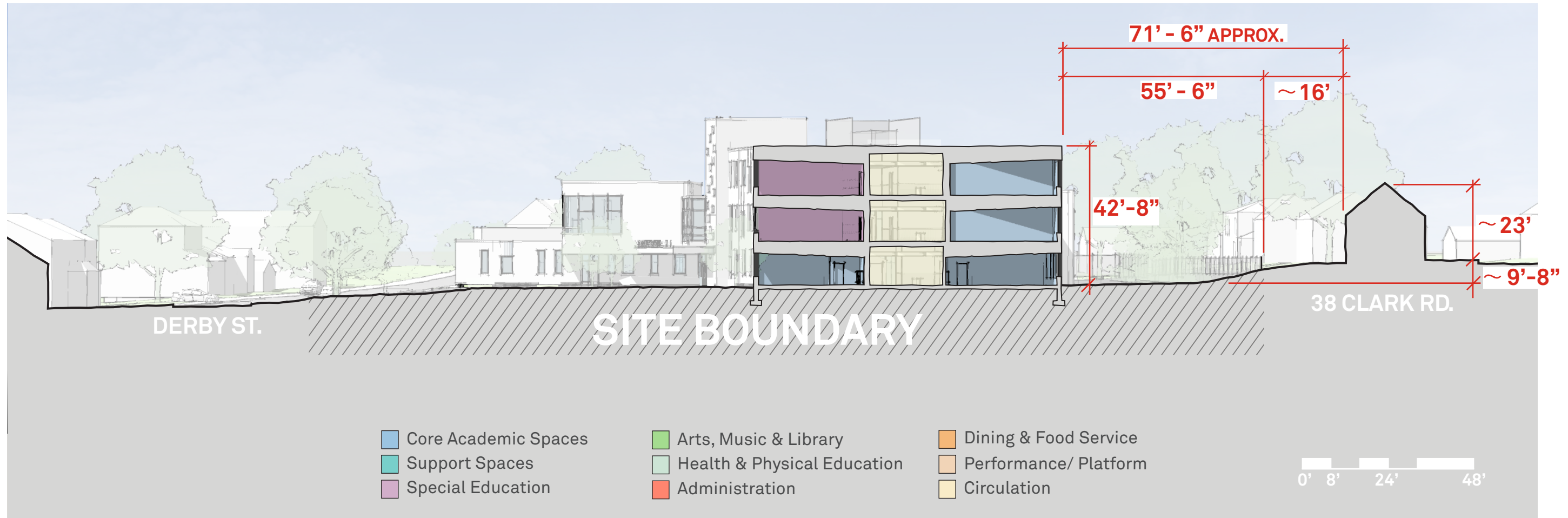
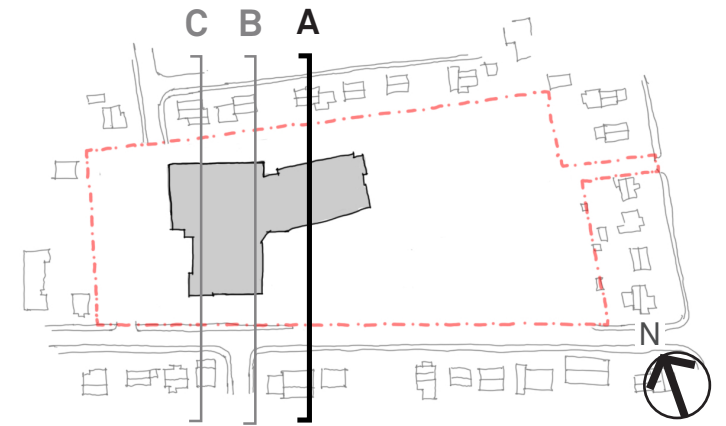
## KEY

- |   |  |
|---|--|
|  Core Academic Spaces        |  Art, Music & Library     |
|  Support Spaces              |  Dining & Food Service    |
|  Special Education           |  Performance/ Platform    |
|  Administration              |  Circulation              |
|  Health & Physical Education |  Toilets, Custodial & MEP |



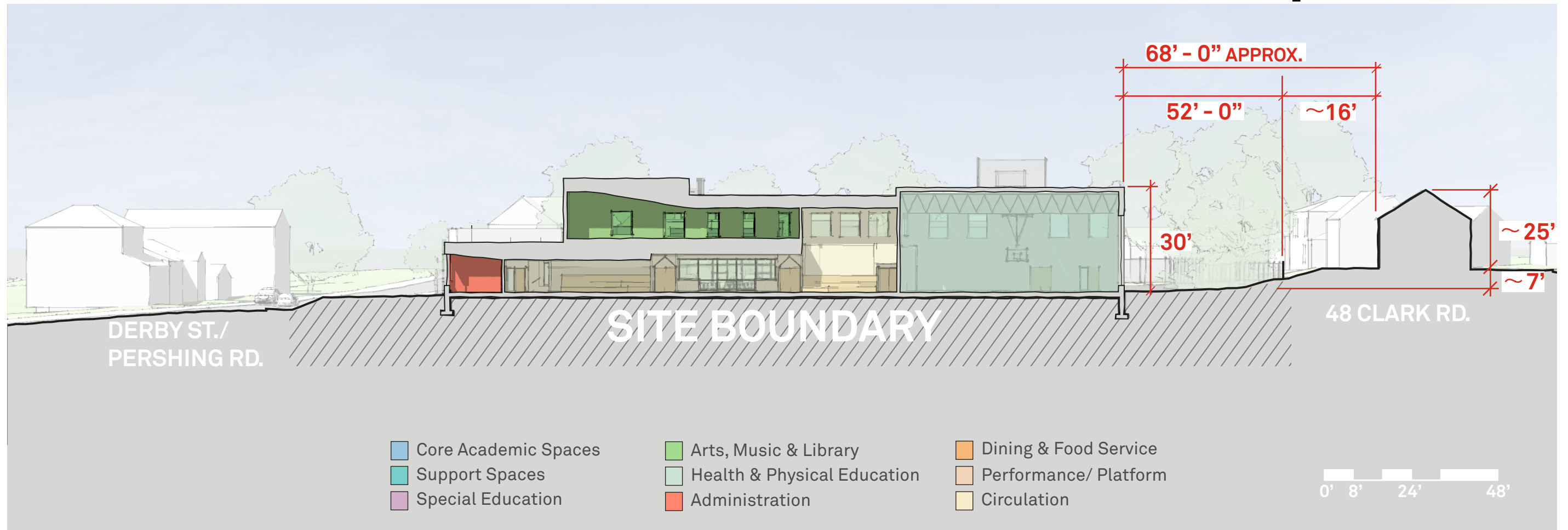
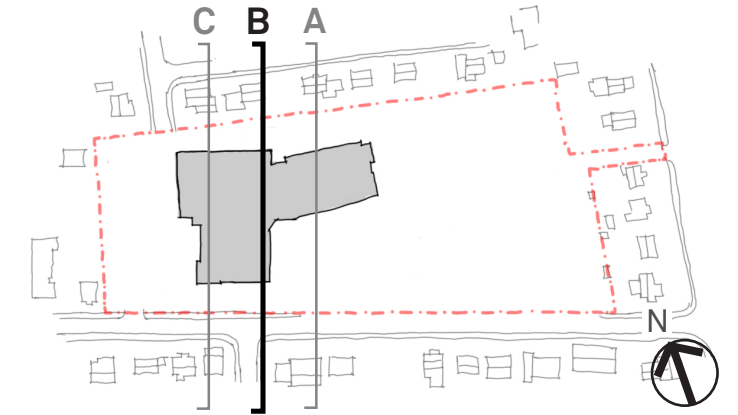
NORTH

# Section A: Academic Wing

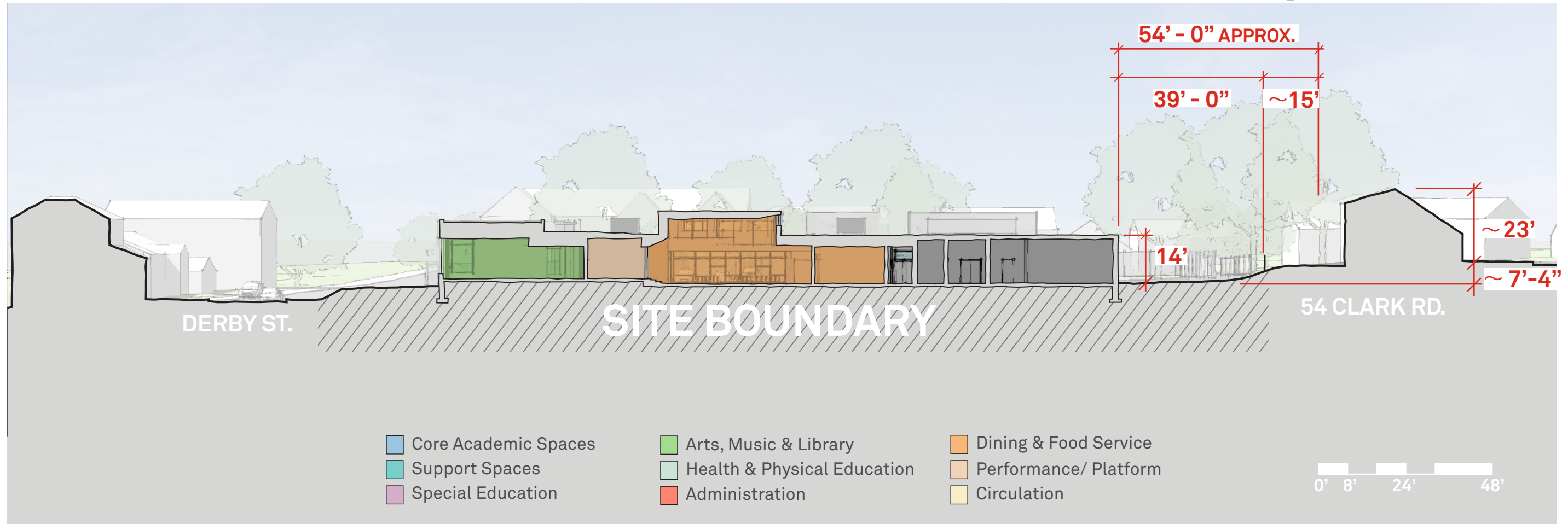
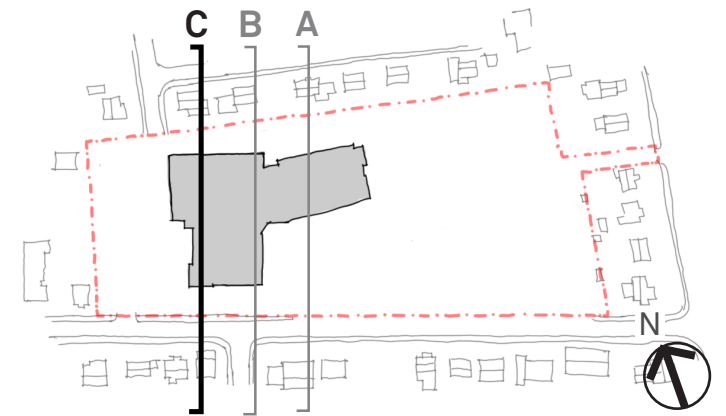




# Section B: Media Center & Gym



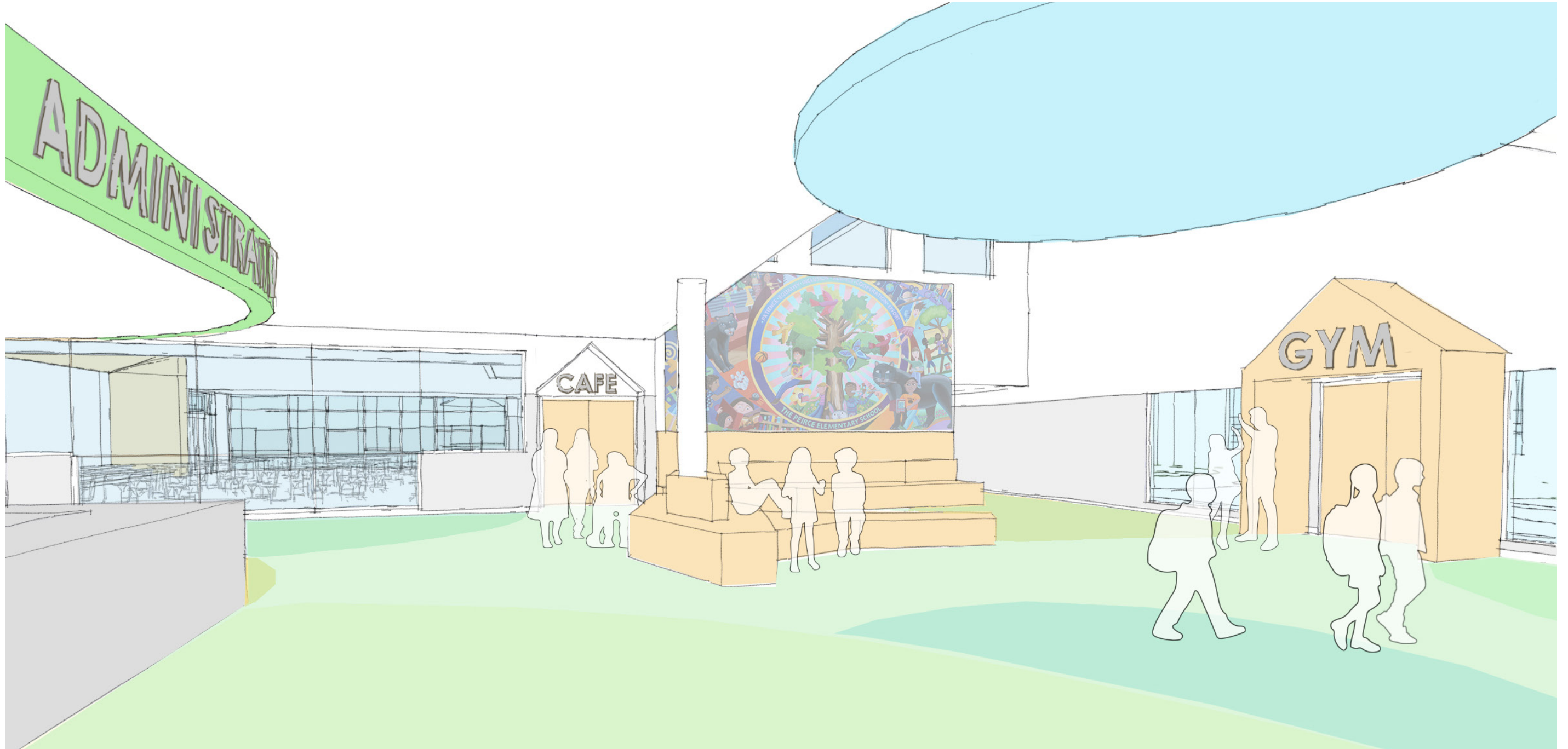
# Section C: Stage & Cafeteria





# Interior Design

Lobby View at Point of Entry





# Interior Design Lobby View looking back at Entry



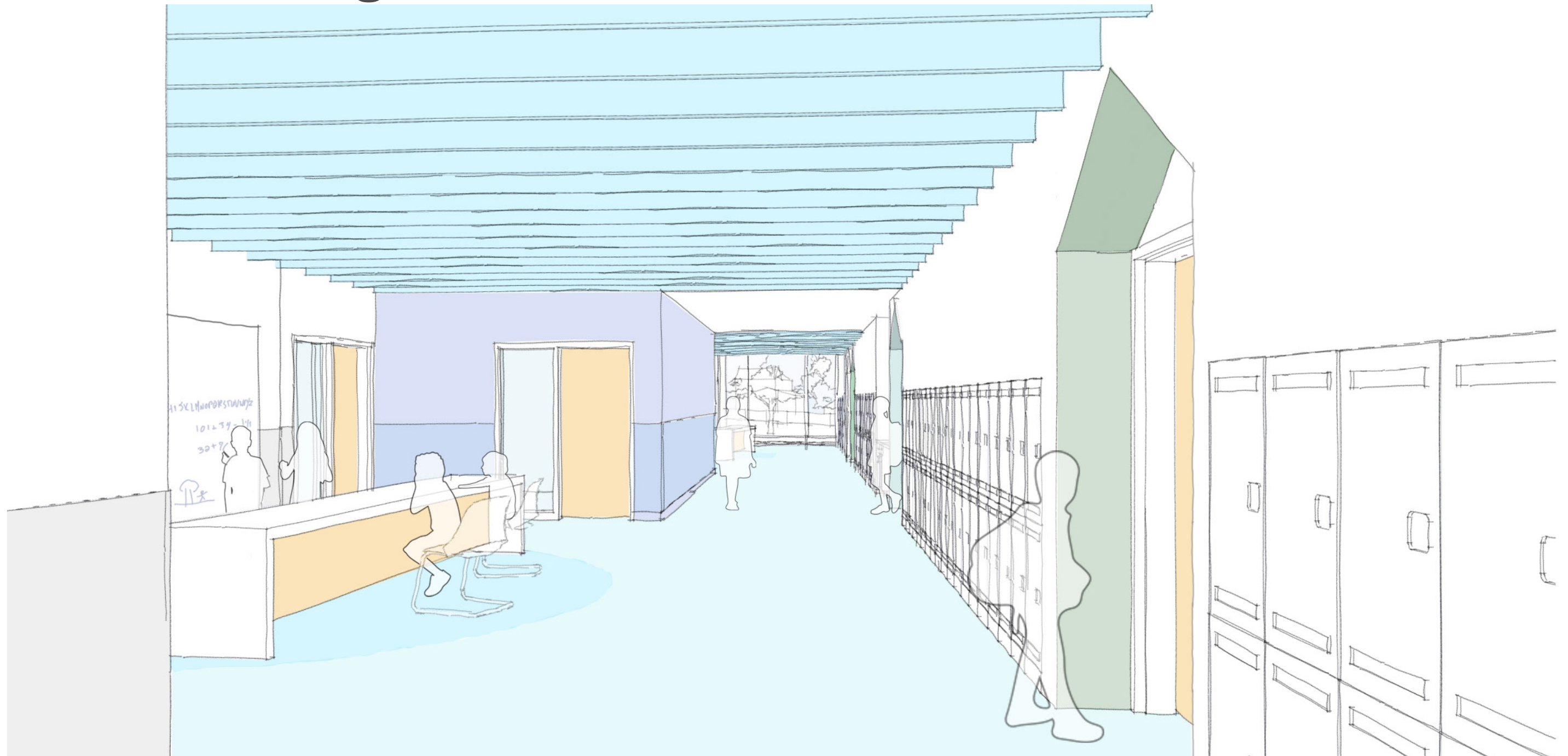
# Interior Design View within Cafeteria





# Interior Design

## Academic Project Area



HM

FH

HMFH ARCHITECTS