

Newton Parks, Recreation, & Culture Department

Memorial Playground at Oak Hill Park

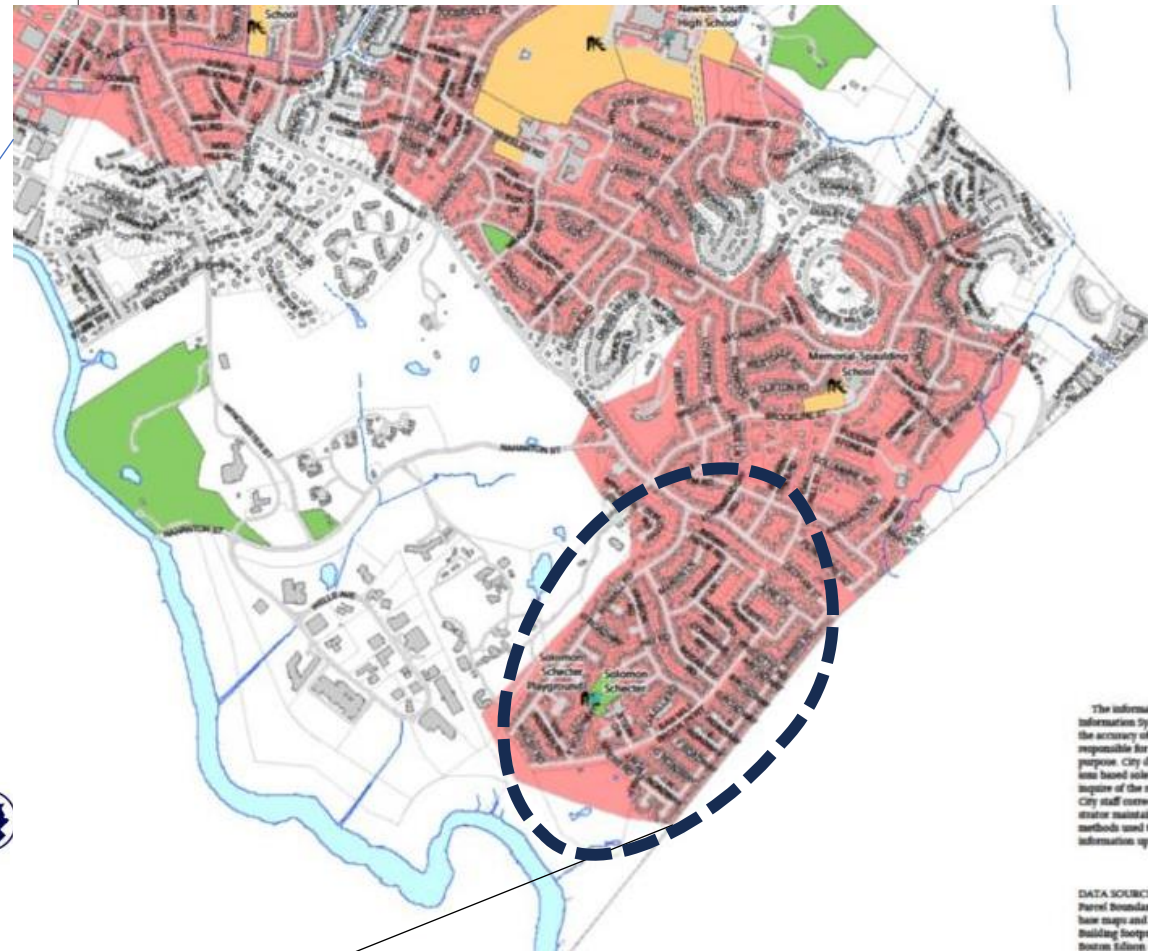
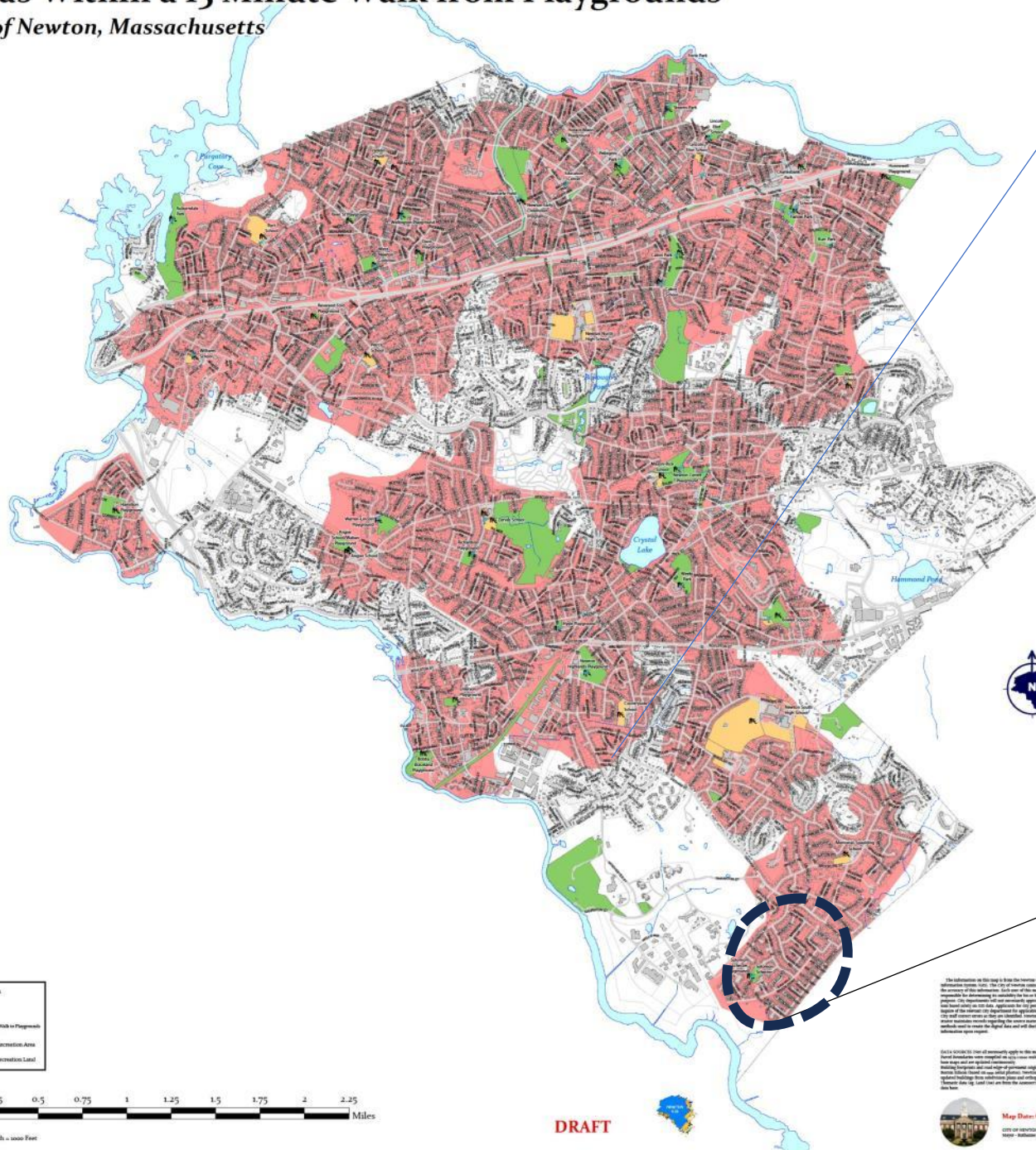
Community Meeting

April 4, 2024



Areas Within a 15 Minute Walk from Playgrounds

City of Newton, Massachusetts



The information on this map is the responsibility of the user. City of Newton is not responsible for the accuracy of the information. City of Newton staff create, maintain, and update the information on this map.

DATA SOURCE:
Parcel Boundary
Aerial Imagery
Building Footprint
Boston School

The information on this map is the responsibility of the user. City of Newton is not responsible for the accuracy of the information. City of Newton staff create, maintain, and update the information on this map.

Map Date: October 24, 2023
CITY OF NEWTON, MASSACHUSETTS
Parks, Recreation & Culture

- Playground
- School
- 15 Minute Walk to Playground
- Park or Recreation Area
- School Recreation Land

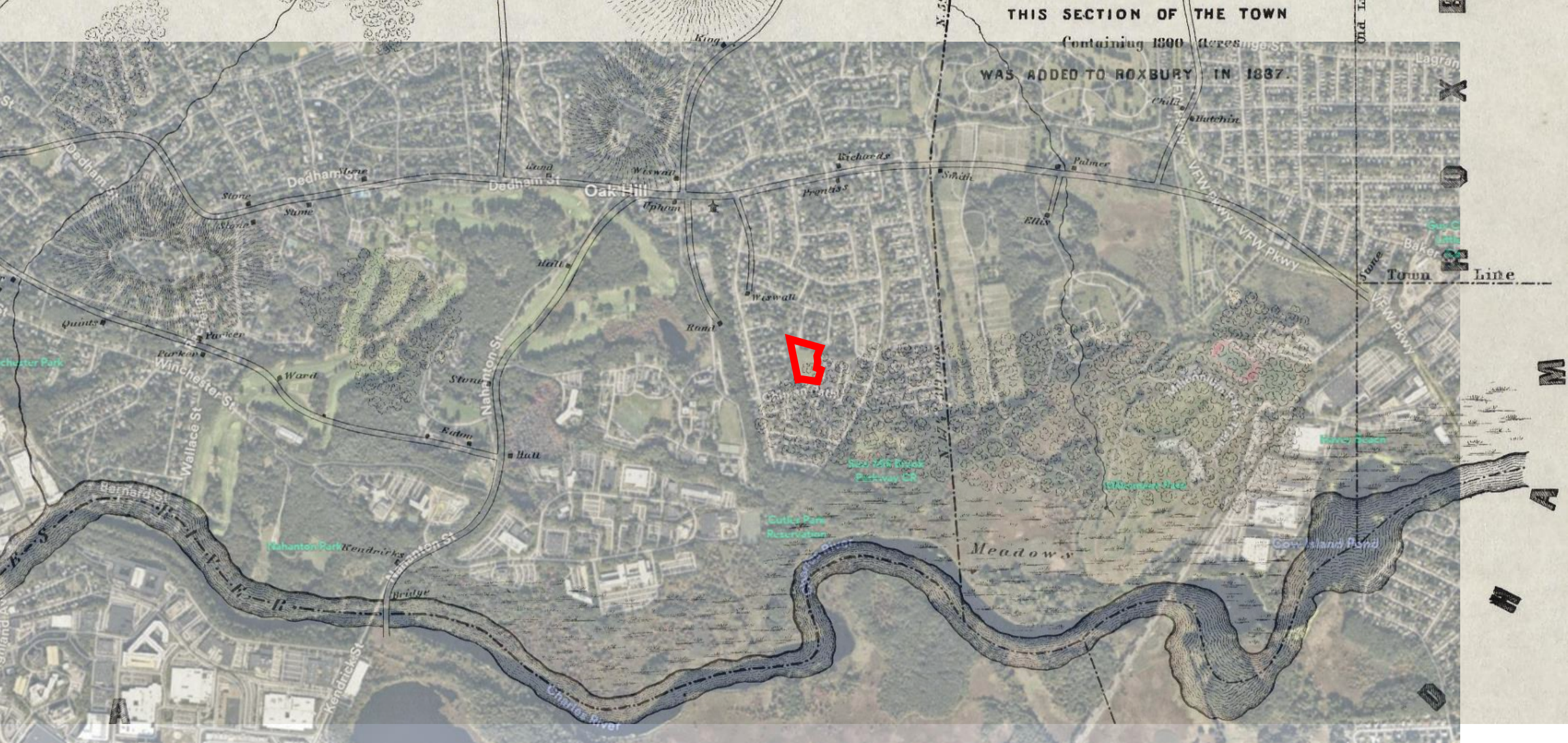
0 0.125 0.25 0.5 0.75 1 1.25 1.5 1.75 2 2.25 Miles
Map Scale: 1 inch = 1000 Feet

DRAFT





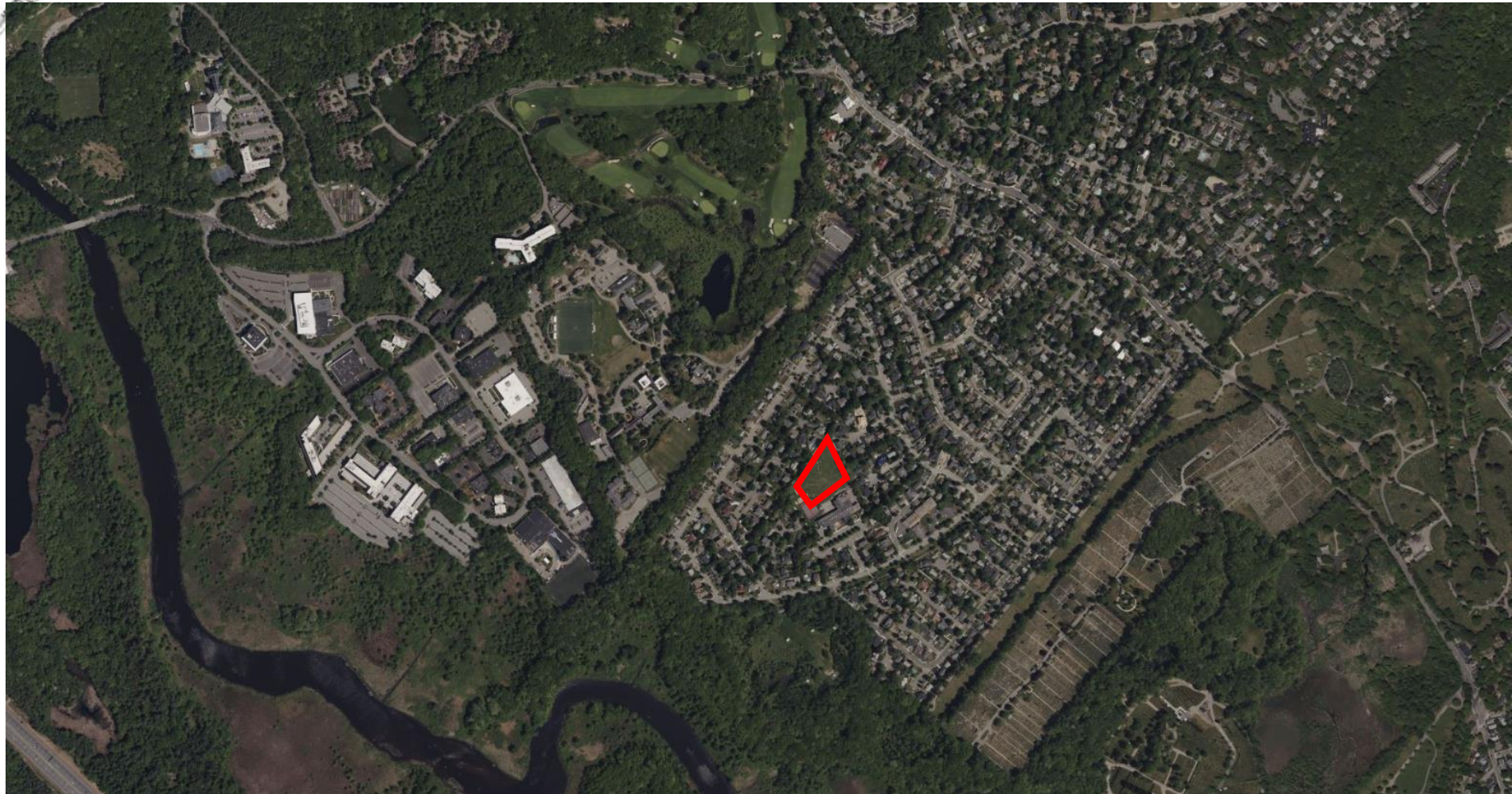
In 1848, Oak Hill was part of a larger forest/marsh area. It became a residential neighborhood in the postwar development of the 1940s.



In 1848, Oak Hill was part of a larger forest/marsh area. It became a residential neighborhood in the postwar development of the 1940s.



Oak Hill is surrounded by a lot of open space, but just one City of Newton public playground.



Memorial Park-Overview

- 3.0 acres
- Abutting Solomon Schechter Day School
- Centrally-located among mostly single-family neighborhood
- Connections to multiple walking/biking paths
- Open lawn area/multi-purpose practice field
- 2 tennis courts
- Perimeter tree plantings
- Metal shade shelter (used by school)
- Playground



Renovation Goals

- Replace aged playground equipment
- Repair and update tennis court
- Enhance accessibility & inclusion
- Support a safe, shared neighborhood space



Renovation Guides

- \$225,000 budget
- Playground and larger park are shared by all Newton residents *and* community members
- Playground enhancements directly related to strength of community support



Improvements Begun

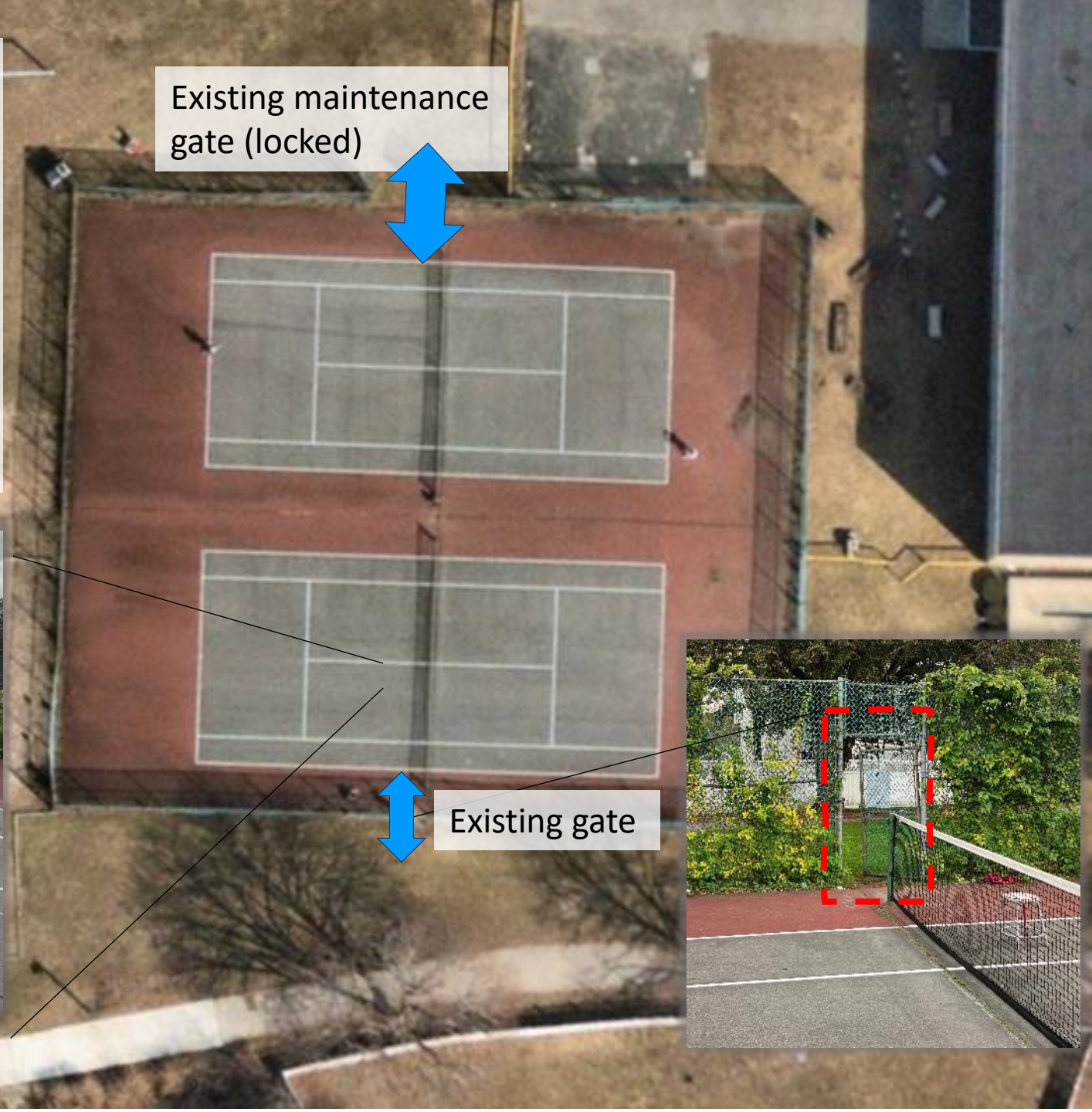
Fall 2023: Multiple out-of-date and aged infrastructure and equipment have already been removed



The main playscape was installed in 1996 and is due for an upgrade next!

Existing Tennis Courts

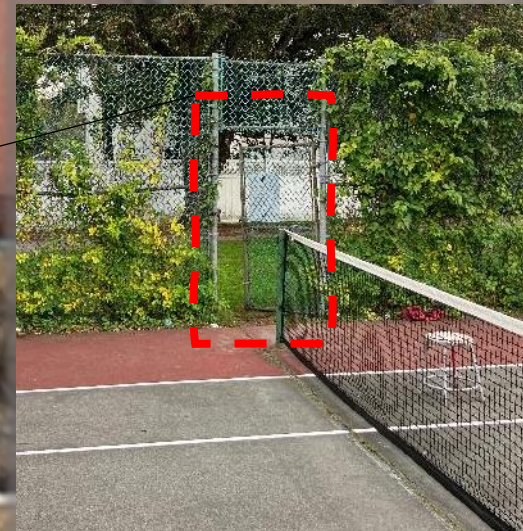
- Not enough “run-out” zones
- One center net not attached
- Archaic gate latch
- One entry
- Modest cracking
- Extensive weeds along fenceline



Existing maintenance gate (locked)

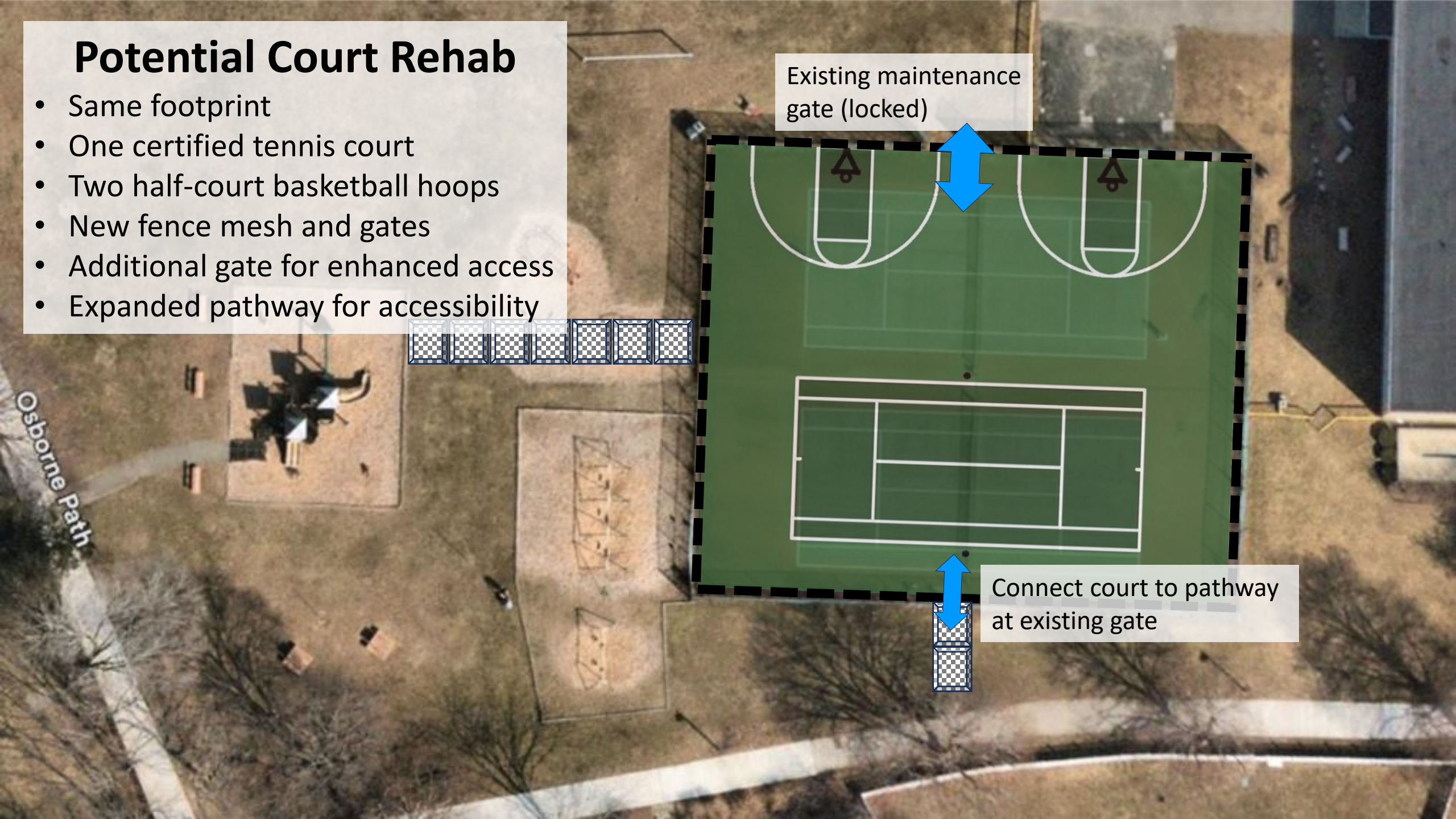


Existing gate



Potential Court Rehab

- Same footprint
- One certified tennis court
- Two half-court basketball hoops
- New fence mesh and gates
- Additional gate for enhanced access
- Expanded pathway for accessibility



Existing maintenance gate (locked)

Connect court to pathway at existing gate

Osborne Path

Elements of Play



PHYSICAL

Joy of movement: motor skills, muscle, cardio and bone density



COGNITIVE

Joy of learning: curiosity, understanding of causal relationships and knowledge of the world



SOCIAL-EMOTIONAL

Joy of being together: teamwork, tolerance and sense of belonging



CREATIVE

Joy of creating: co-creation and experimenting with materials

Accessible & Inclusive Playgrounds

1. Accessibility: “Can I get there?”

2. Inclusion: “Can I stay?”

3. Usability: “Can I play?”

Lhotse with Roof

PCE211932



Item no. PCE211932-0901	
General Product Information	
Dimensions LxWxH	28'9"x16'12"x15'2"
Age group	5 - 12
Play capacity (users)	27
Color options	

Elevated activities 9	Accessible elevated activities	Accessible ground level activities	Accessible ground level play types
Present	6	3	3
Required	5	3	3

Lhotse with Roof

PCE211932



Hammock

Physical: coordination and sense of balance when swaying. **Social-Emotional:** meeting, pushing friends gently back and forth, turn-taking.



Fireman's pole

Physical: coordination is supported when going down, as well as arm and core muscles. Landing strengthens bone density, which is built for life in early childhood. **Social-Emotional:** turn-taking and risk-taking.

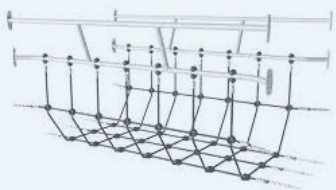


Climbing pole

Physical: cross coordination and muscle strength are trained. **Social-Emotional:** turn-taking and cooperation.

Lhotse with Roof

PCE211932



Net bridge

Physical: children develop their balance, cross coordination and spatial awareness in the open net. **Social-Emotional:** interaction with children outside, socializing. Cooperation and consideration, e.g. when passing others.



Megaphone

Social-Emotional: inspires communication and turn-taking skills. **Cognitive:** distortion of sound evokes curiosity and stimulates an understanding of cause and effect.



Curved slide

Physical: sliding develops spatial awareness and a sense of balance. Furthermore, the core muscles are trained when sitting upright going down. **Social-Emotional:** empathy stimulated by turn-taking.



Somersault bar

Physical: develop balance and core when hanging from knees. Arm, leg and core muscles are developed when climbing up, somersaulting around. Balance and spatial awareness are strengthened. **Social-Emotional:** meeting, socializing and turn-taking when climbing up and down via bar.



Supernova

GXY960

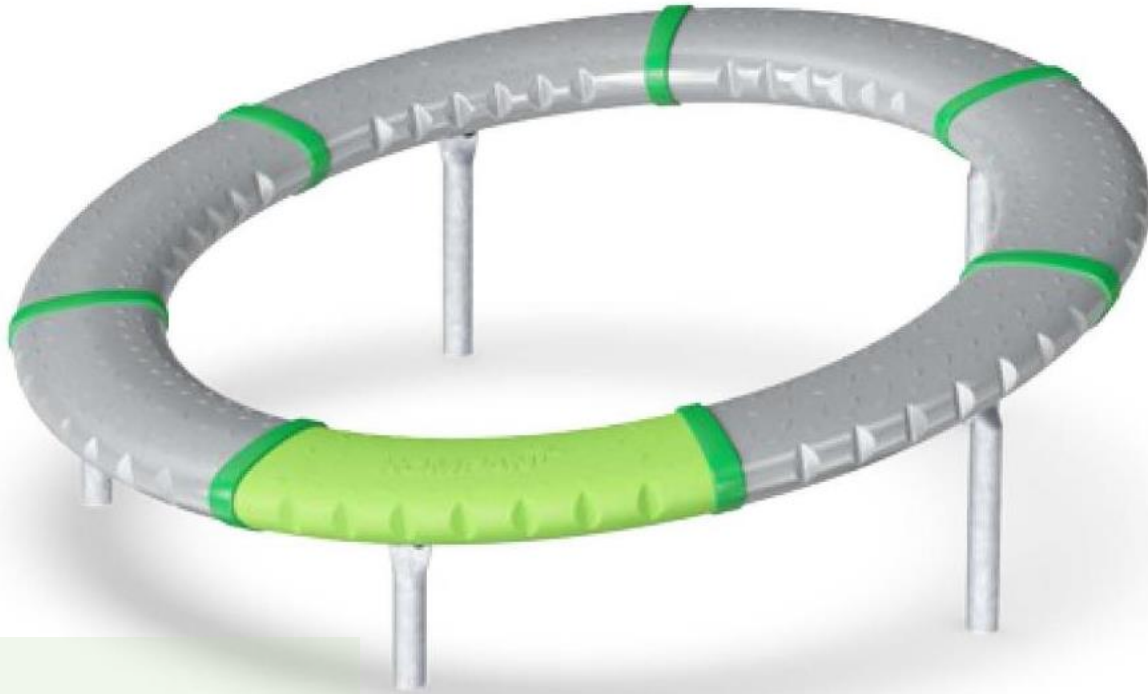


General Product Information	
Dimensions LxWxH	6'10"x6'10"x2'4"
Age group	5 - 12
Play capacity (users)	8
Color options	

Elevated activities 0	Accessible elevated activities	Accessible ground level activities	Accessible ground level play types
Present	0	1	1
Required	0	1	1

Supernova

GXY960



Low entry

Social-Emotional: accessible and usable for all abilities and a wide age span.



7 departments/rings

Social-Emotional: turn-taking and cooperation when finding new games. One differently colored part makes it possible to count rounds when running, encouraging positive competition. **Cognitive:** games-with-rules are invented, which promotes logical thinking.



Slanting ring

Physical: the inclination develops the sense of balance and muscle strength when walking upwards or pushing the ring into motion. Bone density is built when jumping on and off. Furthermore the cardio is practiced when pushing, running.

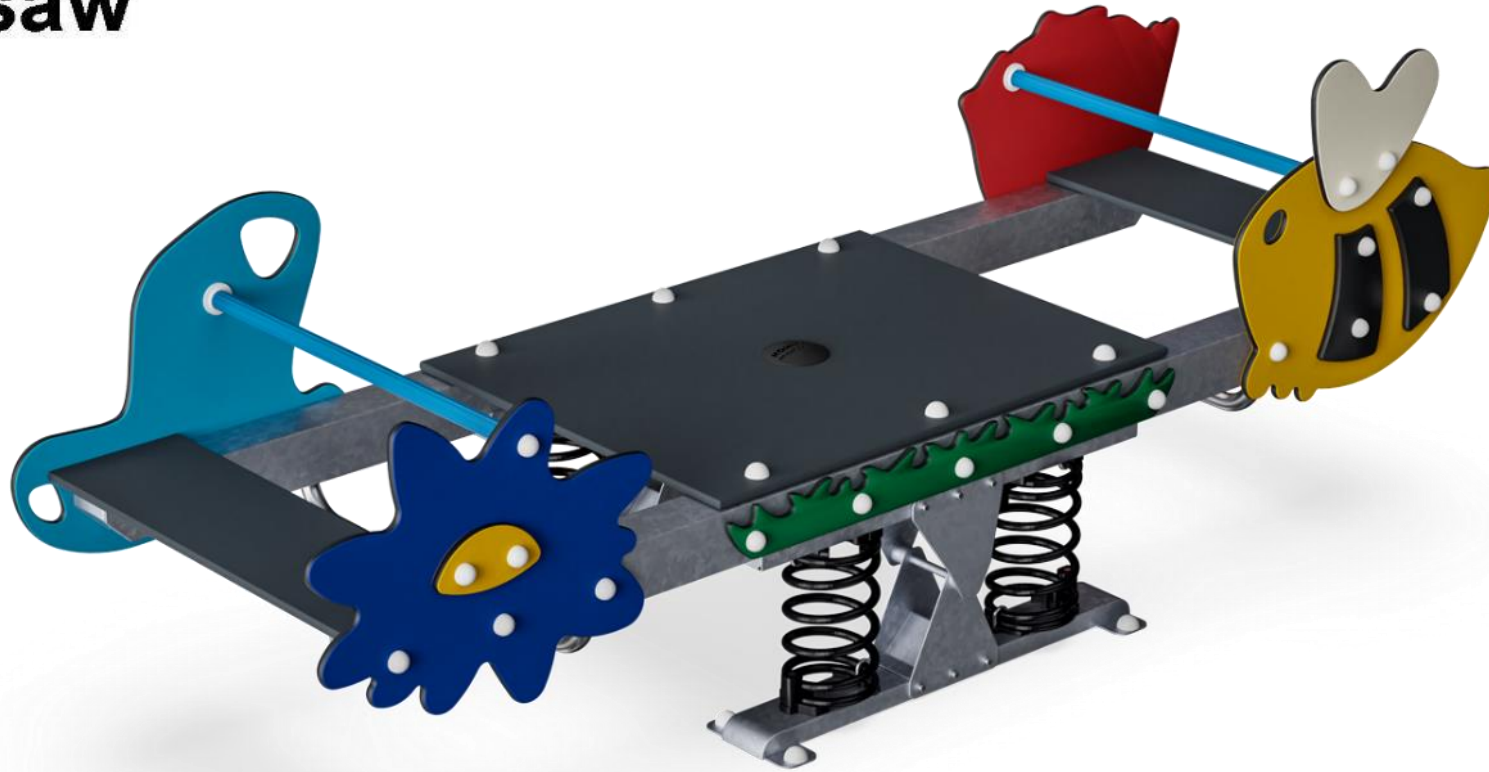


Rotation and gravity


Physical: balance and coordination is used to stay on the ring in motion and walking up- or downwards. This also trains leg and core muscles. **Social-Emotional:** cooperation setting the ring in motion. **Cognitive:** logical thinking, working with gravity when figuring out how to stay on the ring or make it move faster.

Garden Seesaw

M186

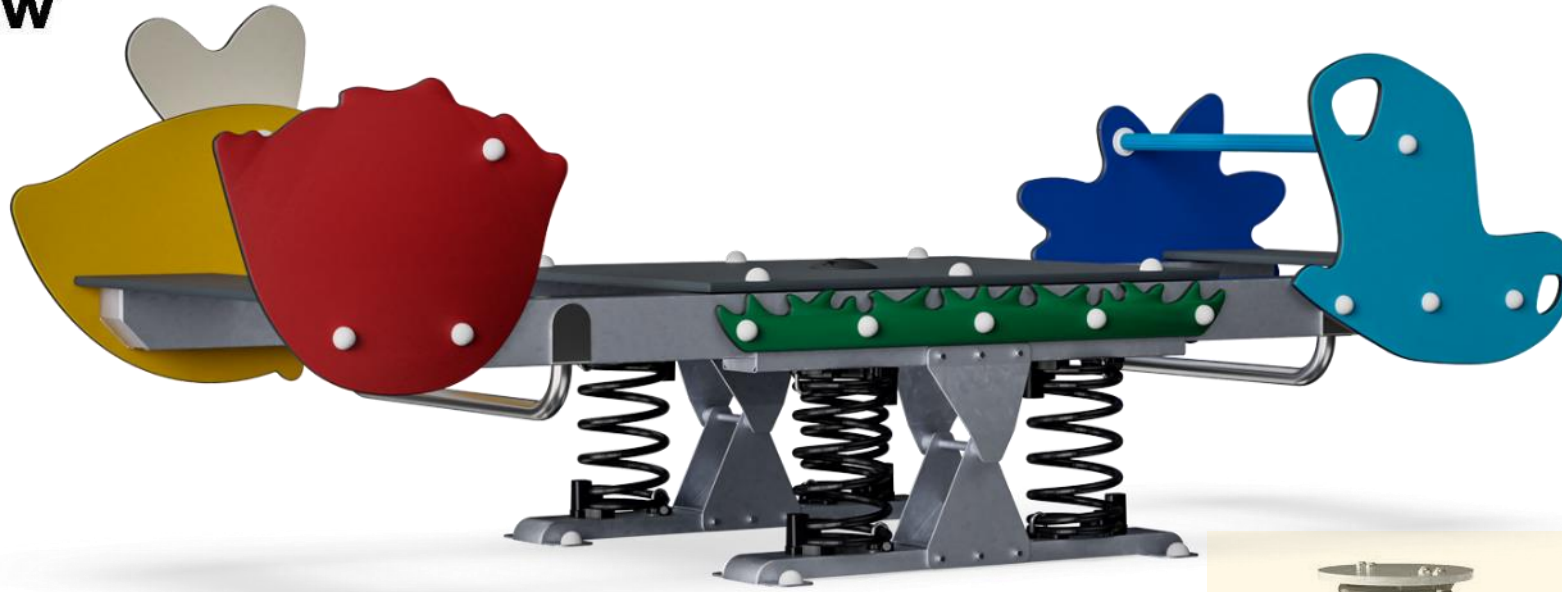


Elevated activities 0	Accessible elevated activities	Accessible ground level activities	Accessible ground level play types
Present	0	1	1
Required	0	1	1

Item no. M18601-01P	
General Product Information	
Dimensions LxWxH	3'7"x10'9"x3'7"
Age group	2 - 12
Play capacity (users)	10
Color options	

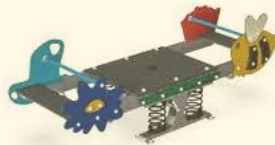
Garden Seesaw

M186



Theme

Cognitive: suggests a theme and supports dramatic play, which stimulates language and communication skills.



Rocking together

Social-Emotional: the possibility of rocking together develops cooperation skills and consideration of others when rocking.

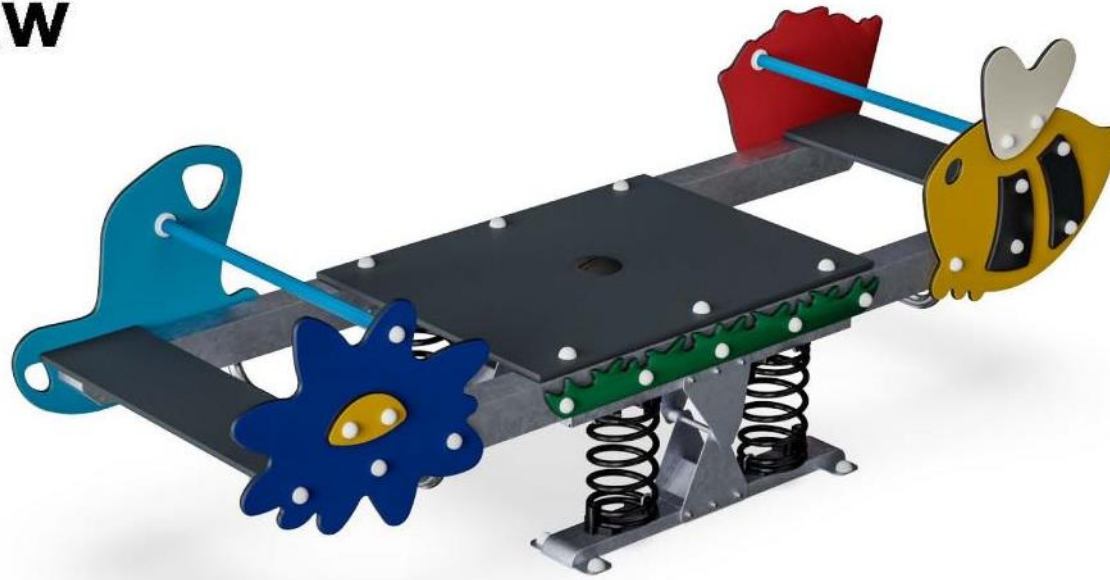


Rocking spring

Physical: response to movement increases spatial awareness and sense of balance. These are fundamental motor skills that help the child's ability to sit still on a chair which takes a good sense of balance. **Cognitive:** trains the understanding of cause and effect: when I move my body, the spring responds with movement.

Garden Seesaw

M186

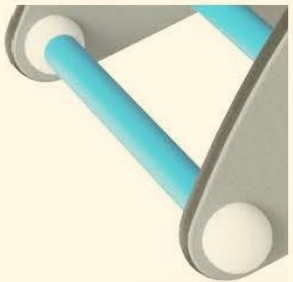


KOMPAN
Let's play



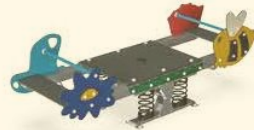
Center platform

Physical: supports agility, balance and coordination when standing, using leg and core muscles, building bone density when jumping. Facilitates sitting and lying also, allowing for users with disabilities. **Social-Emotional:** provides an inclusive space. Point for gathering and for caregivers assisting. Teamwork and socializing when rocking together.



Foot support

Physical: the possibility of footrest supports intense rocking. Rocking stimulates the senses of balance and space that are fundamental in managing the world securely.



Double seating option

Social-Emotional: the possibility of rocking together supports cooperation skills. Furthermore, the physical contact with others is great for the well-being of children, measurable in lower cortisol (stress hormone) levels.



Handhold

Physical: the possibility to hold onto more areas of the handhold ensures a good grip, necessary for rocking intensely. This trains hand and arm muscles.

Enif

GXY902

KOMPAN
Let's play



Elevated activities 0	Accessible elevated activities	Accessible ground level activities	Accessible ground level play types
Present	0	3	2
Required	0	2	2

Item no. GXY902012-3717

General Product Information

Dimensions LxWxH 23'4"x9'11"x8"

Age group 5 - 12

Play capacity (users) 15

Color options

Enif

GXY902

KOMPAN
Let's play



Curved climbing wall

Physical: children develop their cross-body coordination, proprioception and leg, arm and hand strength. Climbing on a curved surface is an extra challenge to muscles.



Play shell

Physical: the swaying movement stimulates the sense of balance, necessary to sit still on a chair. **Social-Emotional:** taking a break and turn-taking are supported, skills necessary to learn how to avoid conflicts.



Teardrop handle

Physical: develops upper body muscles, as when pulling yourself up or hanging in your arms.



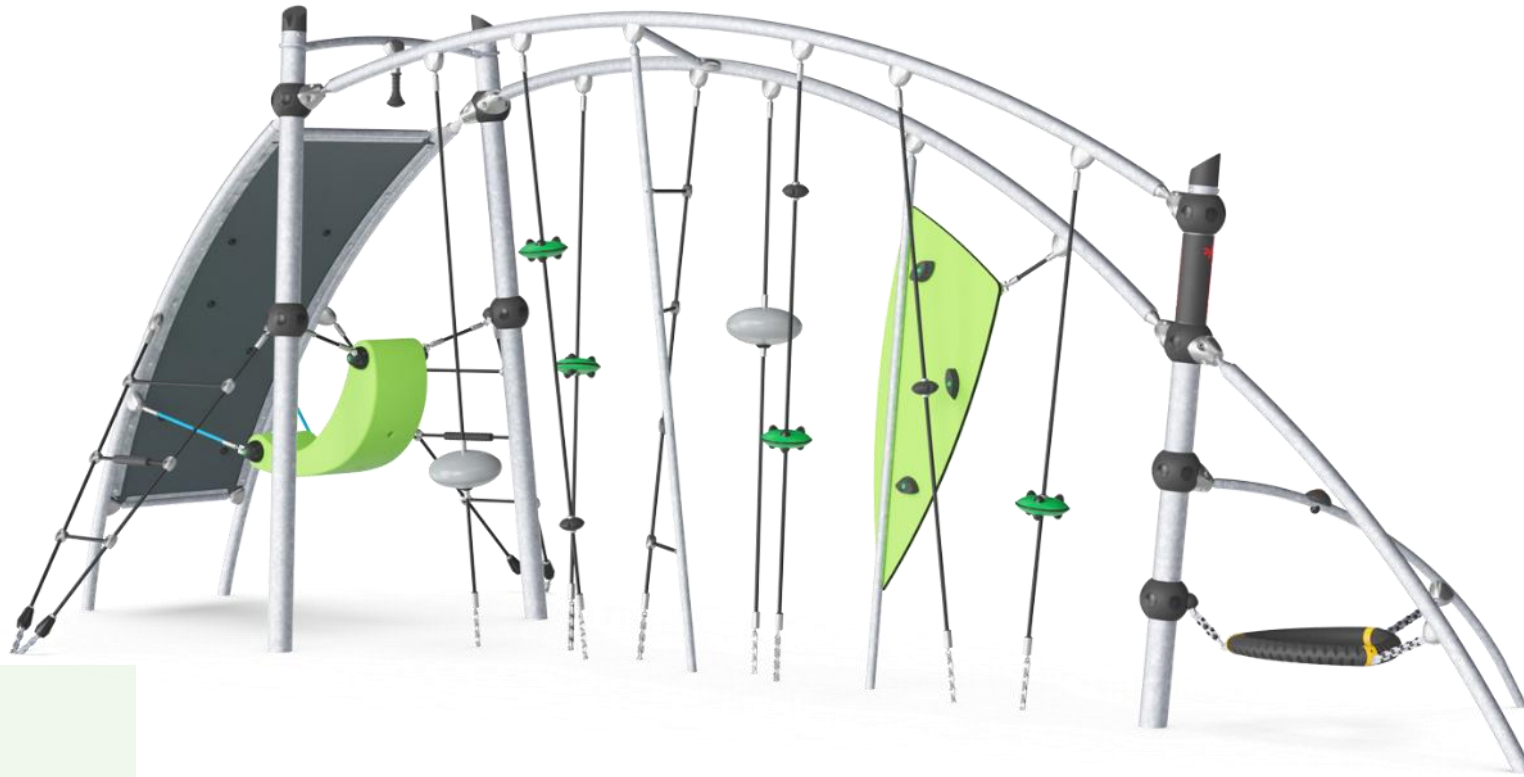
Open triangle plate

Physical: climbing, swaying when seated and balancing, for all abilities. **Social-Emotional:** a great meeting point, swaying seat for a break, inviting socializing and turn-taking, accessible for all and usable for most.

Enif

GXY902

KOMPAN
Let's play



Meteor shower link

Physical: agility, balance and coordination when climbing and swaying on ropes. Arm, leg, and core muscles are strengthened. These are important for posture control and sitting still. **Social-Emotional:** turn-taking and consideration of others when climbing through. These skills are hard to teach but easy to learn in play.



Rope ladder

Physical: cross coordination is supported when children climb the ladder. The climbing also trains leg and arm muscles.

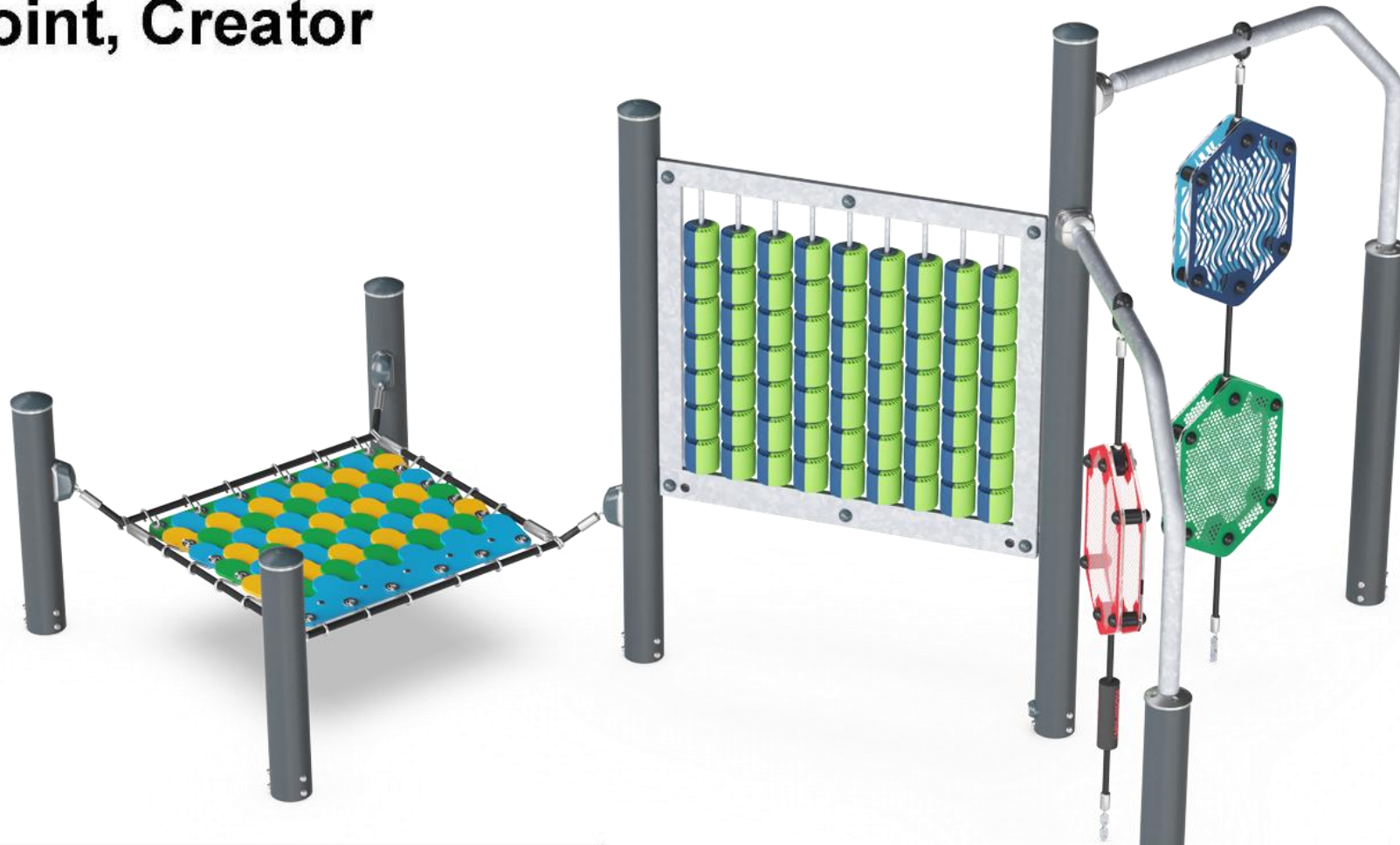


Open triangle plate

Physical: climbing, swaying when seated and balancing, for all abilities. **Social-Emotional:** a great meeting point, swaying seat for a break, inviting socializing and turn-taking, accessible for all and usable for most.

FunPoint, Creator

PCT801



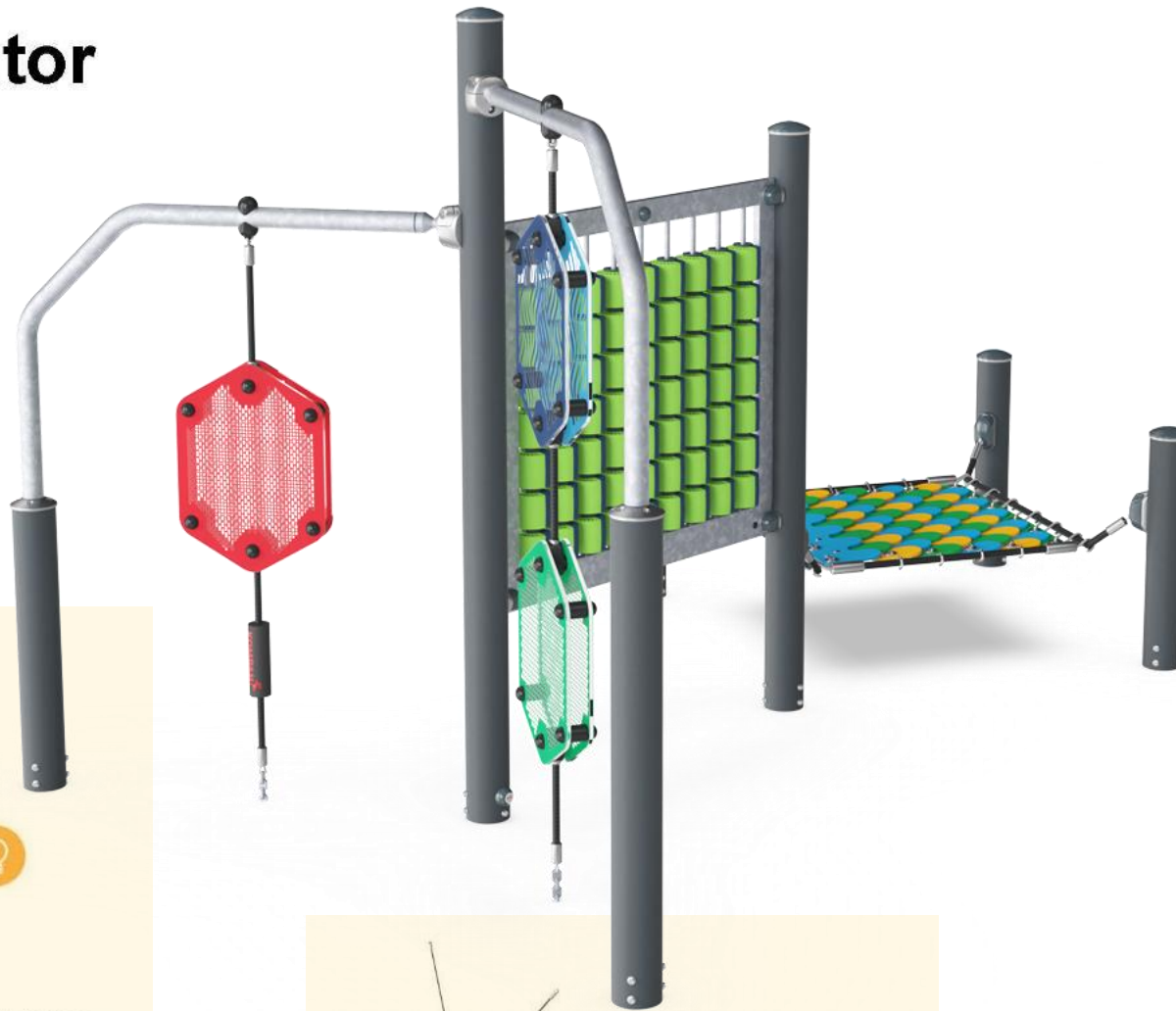
Item no. PCT801-0901	
General Product Information	
Dimensions LxWxH	6'6"x10'6"x6'1"
Age group	2 - 12
Play capacity (users)	8
Color options	

Elevated activities 0	Accessible elevated activities	Accessible ground level activities	Accessible ground level play types
Present	0	3	1
Required	0	2	1

FunPoint, Creator

PCT801

KOMPAN
Let's play



Dichroic panels

Physical: hanging and leaning on the rope-suspended panels train muscles, balance and cross-coordination. **Social-Emotional:** twisting the panels to create colorful shadows encourages turn-taking and cooperation skills. **Cognitive:** wondering about, understanding and explaining the reasons for the color occurrence supports logical thinking skills.



Dragon scale

Physical: the rubber scales add a fun feel to the seat and stimulates the sense of touch. **Social-Emotional:** great point for a break or meeting with friends.



Drawing wall

Physical: the rollers stimulate fine motor skills and when leaning on them provide sensory stimulation that soothes or invigorates depending on the intensity. **Social-Emotional:** the cooperation and turn-taking in making patterns from both sides supports social-emotional skills such as cooperation. **Creative:** the two-colored rollers can be used from both sides, inspiring signal-making and creativity.

Existing swings



Metal structure in good shape, just new swings and surfacing needed.





Surfacing:
GrassMats
over
Engineered
Wood Fiber



Memorial Playground

DRAFT Cost Estimate for Renovation

Component

Cost

Replace tennis posts and nets \$5,000

Add basketball hoops (x2) \$18,000

Traditional Seal & Paint \$45,000

New Fence Mesh + Gate \$45,000

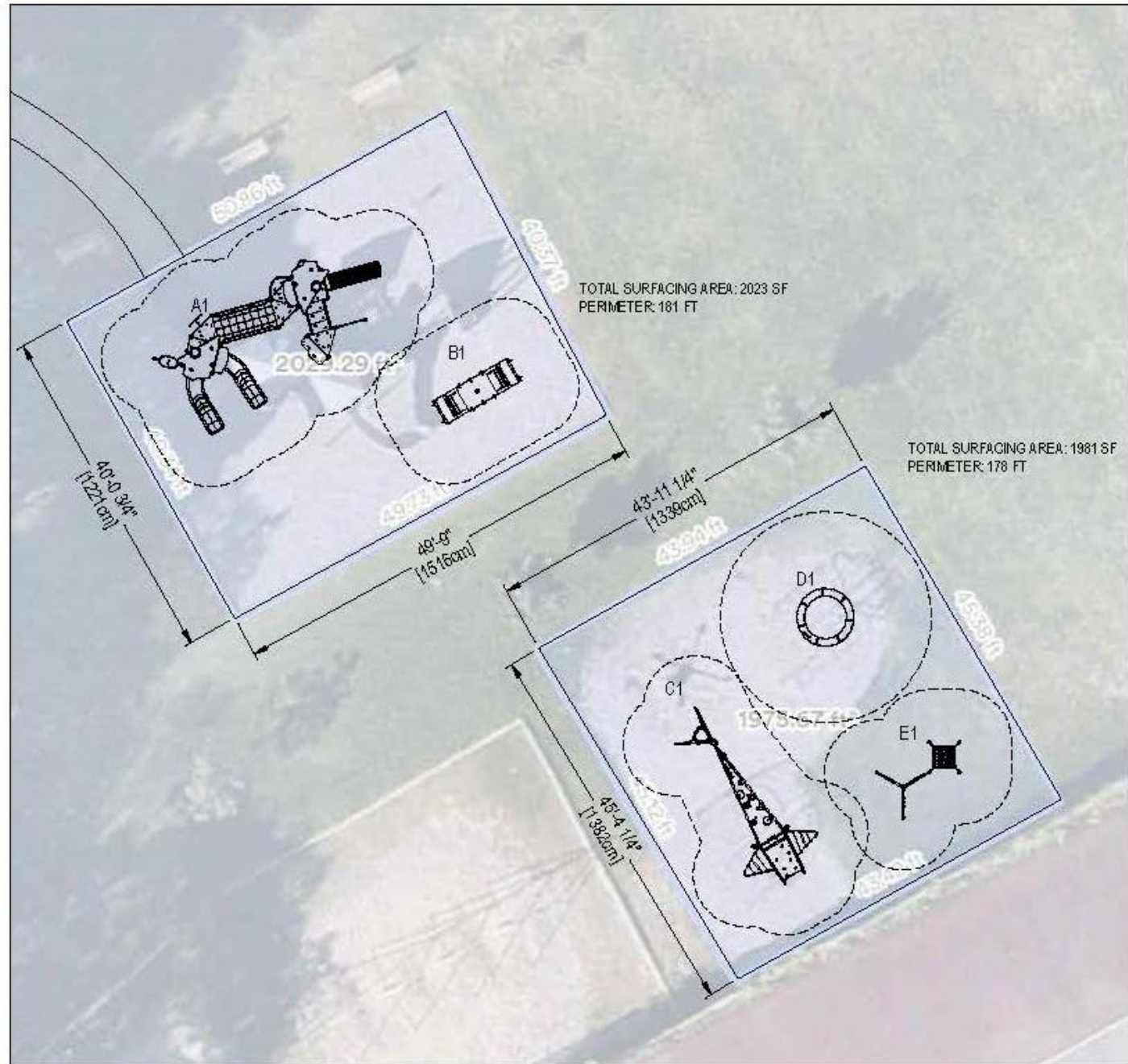
Courts Subtotal \$113,000



Memorial Playground

DRAFT Cost Estimate for Renovation

Playground	Cost
Main structure: Lhotse w/roof	\$39,892.50
Element #1: Garden Seesaw	\$6,472.50
Element #2: Enif - Terra	\$23,550.00
Element #3: Supernova	\$7,417.50
Element #4: Funpoint, Creator	\$13,312.50
Swings	\$4,000.00
Equipment Subtotal	\$94,645.00
Wood Fiber, Matting, and Install	\$94,645.00
Total Subtotal	\$302,290.00
Contingency (20%)	\$60,458.00
Freight	\$8,000.00
Total Total	\$370,748.00





Horace Mann Playground (2022): \$250,000



Wellington Playground
w/Friends of Wellington Park (2023): **\$150,000**

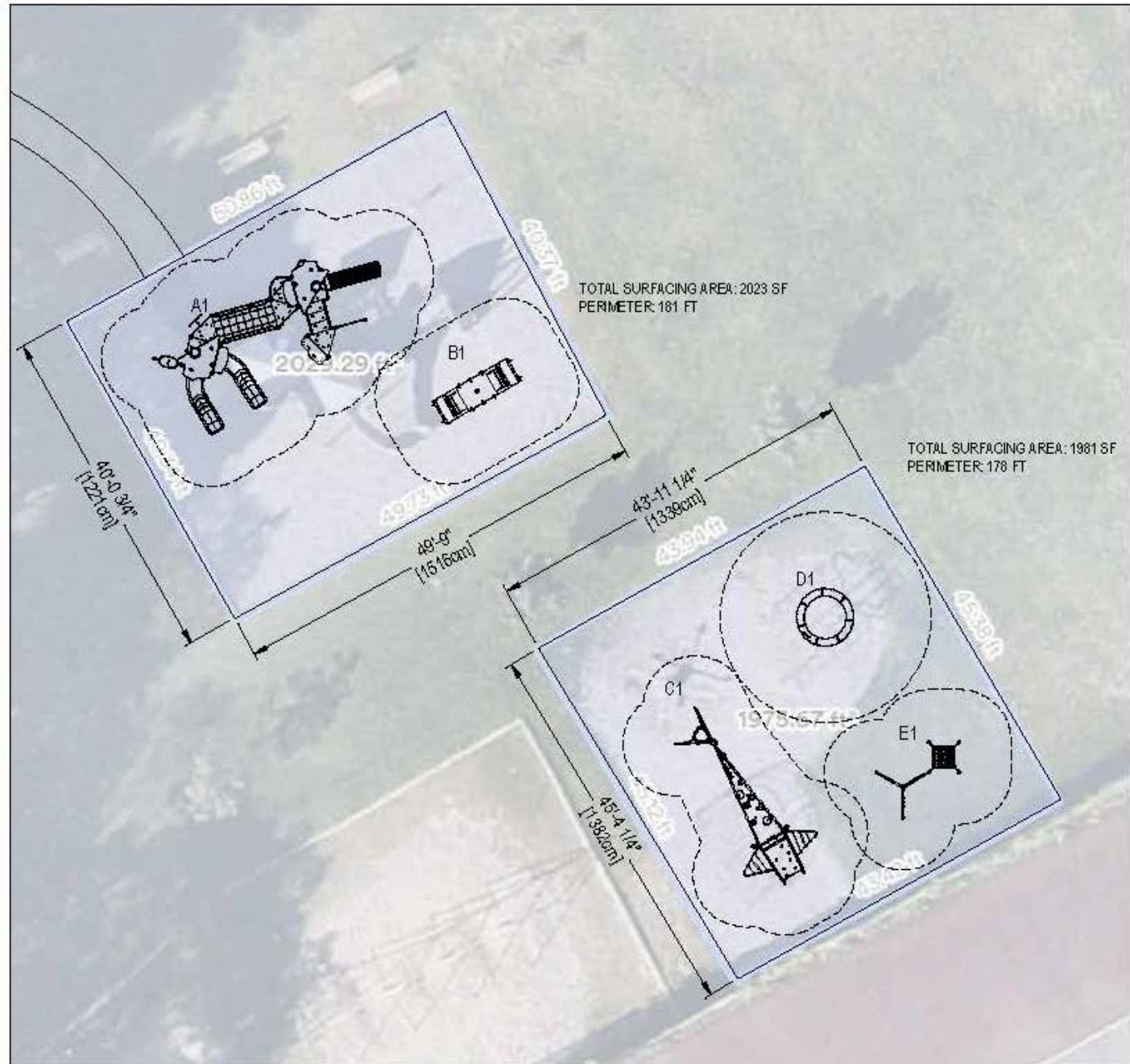


Forte Park (2024): **\$150,000**

Memorial Playground

DRAFT Cost Estimate for Renovation

Playground	Cost
Main structure: Lhotse w/roof	\$39,892.50
Element #1: Garden Seesaw	\$6,472.50
Element #2: Enif - Terra	\$23,550.00
Element #3: Supernova	\$7,417.50
Element #4: Funpoint, Creator	\$13,312.50
Swings	\$4,000.00
Equipment Subtotal	\$94,645.00
Wood Fiber, Matting, and Install	\$94,645.00
Total Subtotal	\$302,290.00
Contingency (20%)	\$60,458.00
Freight	\$8,000.00
Total Total	\$370,748.00



Questions? Comments?

*For additional Comments and input, please email us at: Parks@newtonma.gov
or visit us at: www.newtonma.gov/parkprojects*