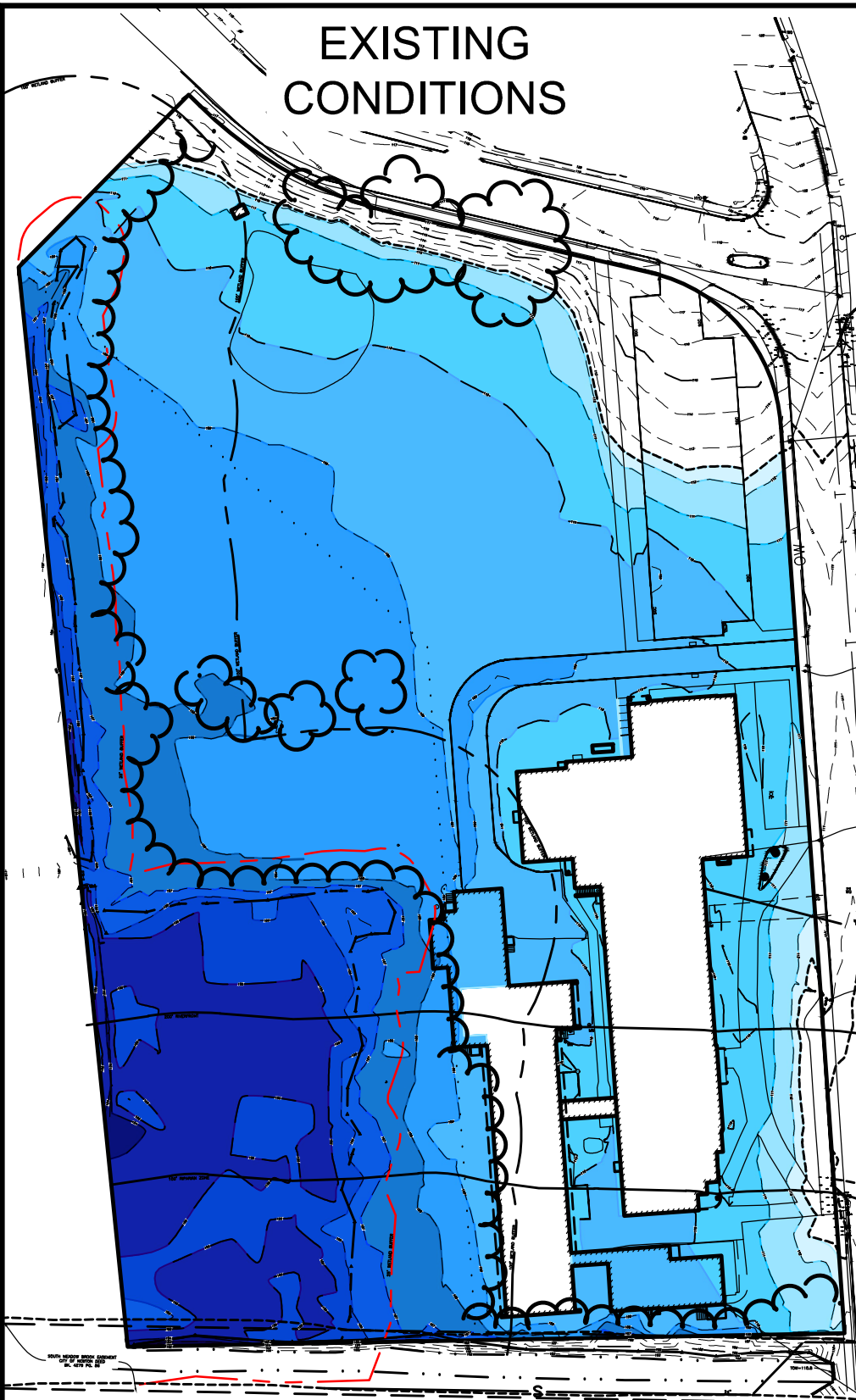
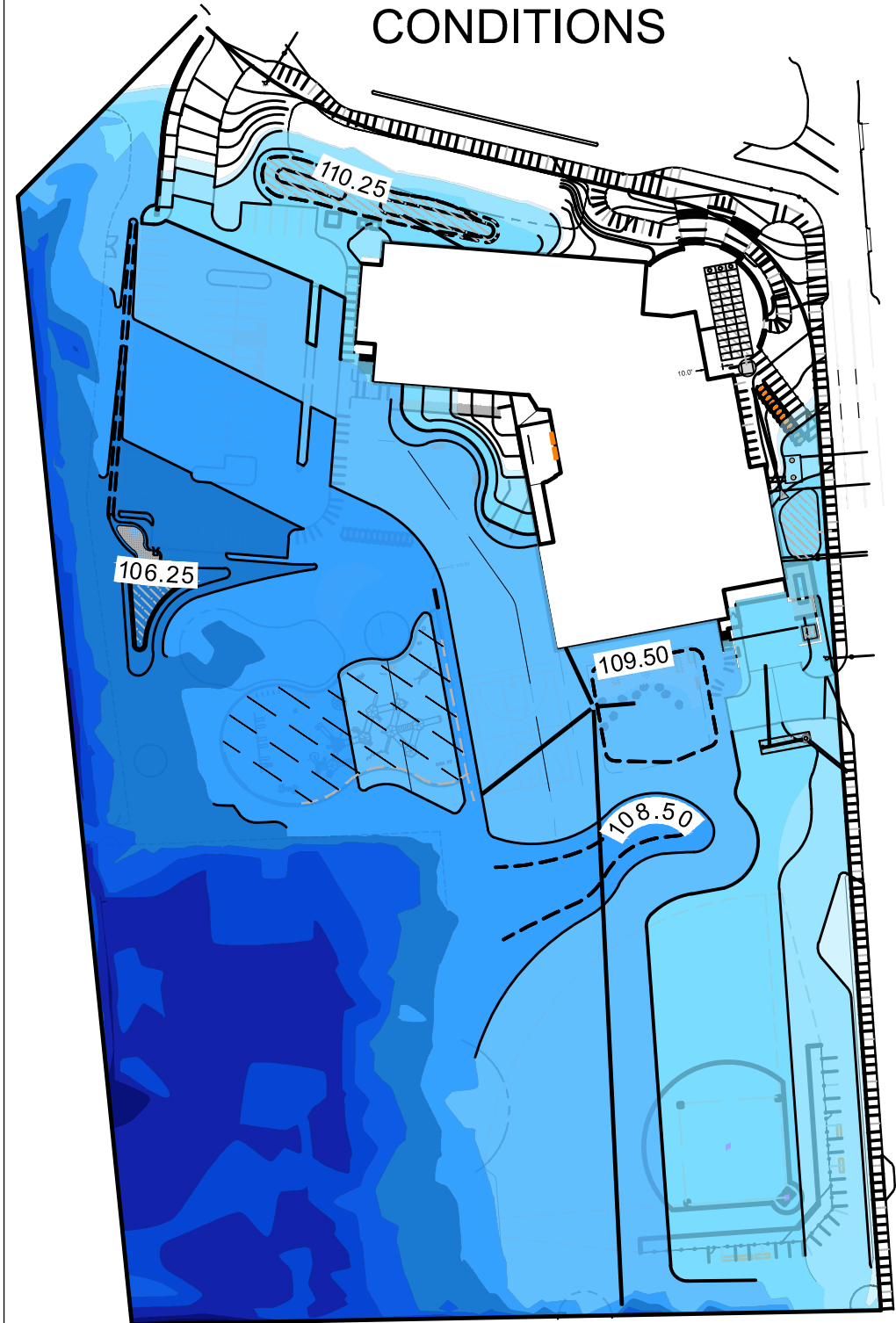


EXISTING CONDITIONS



COMPENSATORY FLOOD STORAGE CALCULATIONS				
ELEVATION (FT)	EXISTING CONDITIONS		PROPOSED CONDITIONS	
	AREA (SF)	VOLUME (CF)	AREA (SF)	VOLUME (CF)
103	107	485	107	485
104	862	12,824	862	12,824
105	24,785	33,535	24,785	33,535
106	42,285	48,130	42,285	48,130
107	53,974	65,048	53,974	68,804
108	76,122	104,206	83,633	107,971
109	132,289	164,361	132,309	167,202
110	196,432	219,439	202,094	221,792
111	242,445	249,591	241,490	249,701
112	256,737	103,446	257,911	103,804
112.4	260,493		261,111	
TOTAL		1,001,062		1,014,245

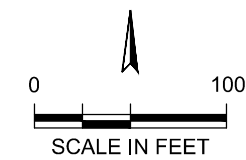
PROPOSED CONDITIONS



**Flood Storage Increased by
13,183 cf**

LEGEND

- | | | | | | |
|--|-----------|--|-----------|--|-------------|
| | 102 - 103 | | 106 - 107 | | 110 - 111 |
| | 103 - 104 | | 107 - 108 | | 111 - 112 |
| | 104 - 105 | | 108 - 109 | | 112 - 112.4 |
| | 105 - 106 | | 109 - 110 | | |



Revisions	Date	By	Appr.	Description
1	04/22/24	JV	JCB	NOI

Horsley Witten Group, Inc.
Sustainable Environmental Solutions
90 Route 6A
Sandwich, MA 02563
508-833-5600 voice
508-833-3150 fax

Date: MARCH 2024
Design By: USA
Drawn By: ABC
Checked By: JCB

Plan Set:
COUNTRYSIDE ELEMENTARY SCHOOL
191 DEDHAM STREET
NEWTON HIGHLANDS, MASSACHUSETTS

Plan Title:
**EXISTING VS PROPOSED CONDITIONS
FEMA FLOOD STORAGE MAP**

Prepared For:
DINisco Design
89 Chauncy Street
Boston, MA 02111
Phone: (617) 425-2688
Fax: ###

Survey Provided By:

Phone: #####
Fax: #####
Date: #####

Registration:

Project Number:
22092

Sheet Number:
of