

Franklin Elementary School

NEWTON, MA

Design Review Committee

May 15, 2024

H M

F H

H M F H ARCHITECTS

Agenda

- Project Review
 - Project Progress
 - Site Development
 - Floor Plans
 - Exterior Renderings
- Vote to Approve SD for Site Plan Approval

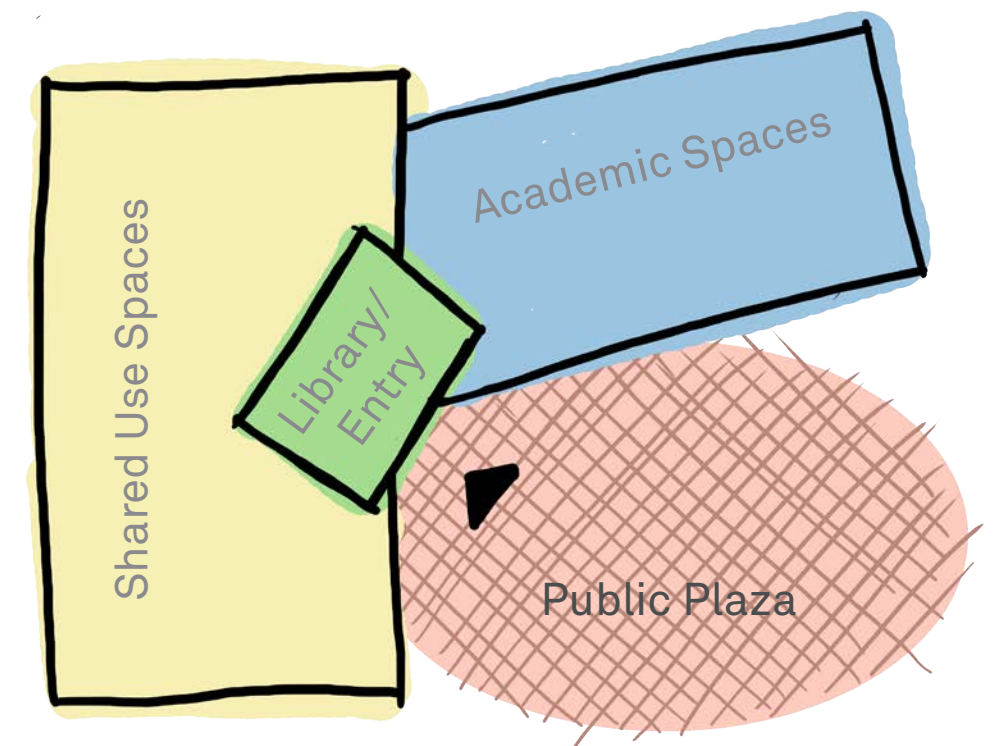


Project Statistics

of Current Scheme

- Enrollment - 396 to 414 students
- Design meets all program requirements - size of spaces and adjacencies
 - Program Net SF: 47,265 NSF
 - Gross Sf: 70,898 SF
 - Net to Gross Ratio : 1.5
- Exterior window to wall ratio - 21%
- Target EUI - 25kBtu/sf/year
- Systems BoD: Ground source heat pump, variable refrigerant flow
- Zero combustion/ all electric

Parti (*noun*) the basic general scheme of an architectural design



Project Statistics

Traffic management

- Enrollment - 396 - 414 students
- Proposed # of Staff - 90 (65 full time, 25 part time)
- Proposed # of Buses - 2
- Proposed blue zone capacity - 12-15 including HC spot (based on the 396 enrollment)
- # of vans for drop off/pickup -4
- Proposed # of On-site staff parking - 60
- Anticipated off site parking to be managed - 30



Progress

2022: Pre-Feasibility Study Phase

- Three (3) School Building Committee Meetings
- Six (6) Working Group meetings
- June 13, 2024: Programming Meeting
- June 13: 2024: Site programming with Parks, Recreation and Culture
- Oct. 24 2022: Educational Visioning Meeting (Part 1)

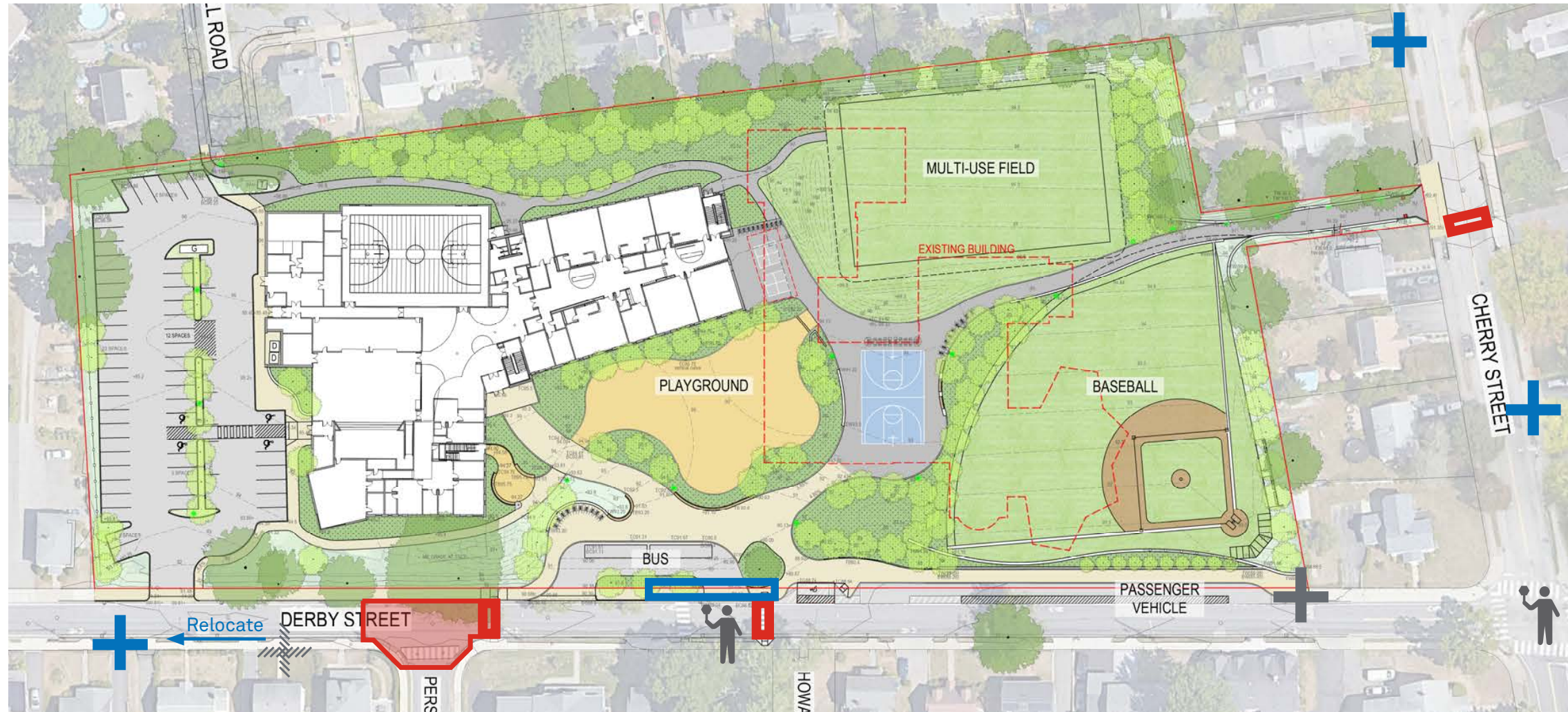
2023 - Present: Feasibility Study and Schematic Design:

- Four (4) School Building Committee Meetings
- Six (6) Design Review Committee Meetings
- Twenty-three (23) Working Group meetings
- June 7, 2023: Educational Visioning Meeting (Part 2)
- Aug. 18, 2023: Special Education Programming Meeting
- Aug. 25, 2023: Newton Engineering - Traffic Division
- Jan. 3, 2024: Newton Fire Department
- Jan. 17, 2024: Development Review Team Meeting
- Jan. 25, 2024: Newton Engineering Division Meeting







- Jan. 29, 2024: Historic Commission Hearing
- Feb. 2, 2024: Mechanical System Review Meeting
- **Feb. 6, 2024: Draft Stormwater Management Plan to city Engineering for initial comments**
- Feb. 21, 2024: Public Facilities Committee Meeting - Stormwater Review
- Feb 29, 2024: Departmental Meetings (including General Classrooms, Art, Music, Library, Reading, Literacy, and Math Specialists, ELL, Speech, Gym, Special Education, and district wide Bridge Program)
- March 4, 2024: Meeting with Parks, Recreation and Culture
- March 6, 2024: All School Meeting at Franklin ES
- March 20, 2024: Development Review Team Meeting
- April 8, 2024: School Transportation Steering Committee
- April 12, 2024: Building Commissioning Kick-off meeting
- **April 19, 2024: 90% Schematic Design Submission to Cx, DRC, and SBC**
- **April 30, 2024: Stormwater Management Plan submitted to Newton Engineering for review**
- May 6, 2024: Utility Incentives Meeting w/ Eversource

Traffic report

Recommendations and notes



KEY:

-  Crosswalk w/ ADA ramps and pedestrian/school crossing signs, consider RRFB
-  Consider raised intersection at Derby Street and Pershing Road
-  School zone/ speed limit flashing beacon
-  Existing school zone/ speed limit flashing beacon
-  Consider extending blue zone for upper enrollment (414)
-  Existing crossing guard locations




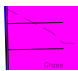
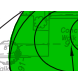
Traffic report

Recommendations and notes

- Provide Derby St crosswalks at Howard St (relocated) and Pershing Road (existing).
- Relocate school zone speed limit flashing beacon facing east bound traffic to be on the west side of the new parking lot driveway.
- Provide new Cherry Street crosswalk aligned with the proposed Cherry Street pedestrian/bicycle access to the site. Consider an additional crossing guard here.
- Install a school zone speed limit on Cherry Street between Pleasant Street and Derby Street.
- Provide MUTCD compliant pedestrian/school crossing signs and ADA ramps and consider rectangular rapid flashing beacons (RRFB) at crosswalks on Derby and Cherry.
- Investigate a raised crosswalks on Derby Street or a raised intersection at Derby Street and Pershing Road. (Newton Transportation recommends raised intersection.)
- Investigate increasing blue zone up to 80' (four cars). Note: removal of buses and vans from blue zone traffic pattern also helps to alleviate this need.

Stormwater Management Plan



-  INFILTRATION SYSTEM
-  POROUS PAVEMENT
-  BIO-SWALE/ BIO-RETENTION BASIN



Site plan showing trees

Tree Caliper Inches Removed: 241 inches
Tree Caliper Inches Proposed: 270 inches
(90 trees at 3" planted)



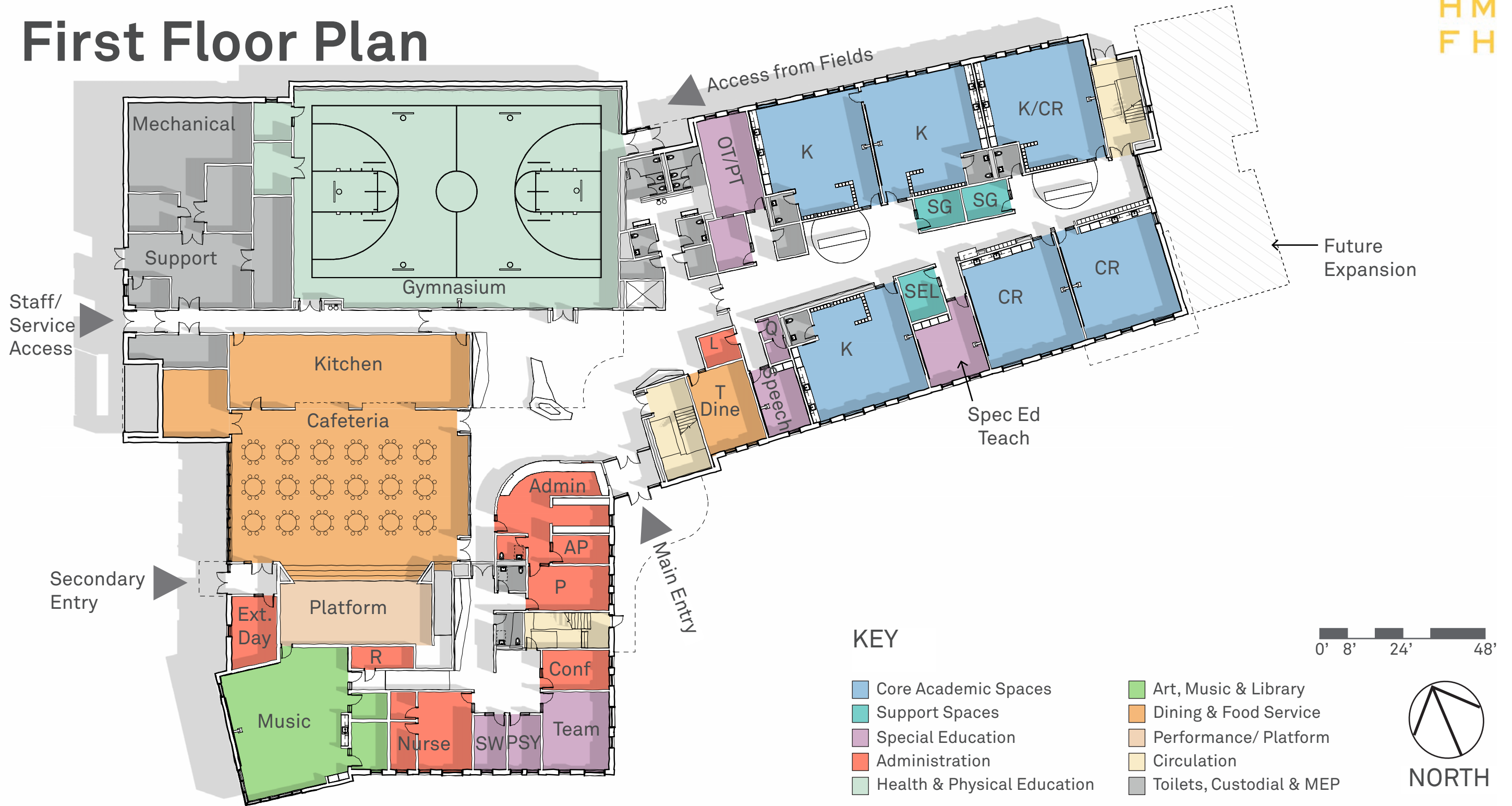
Site Plan



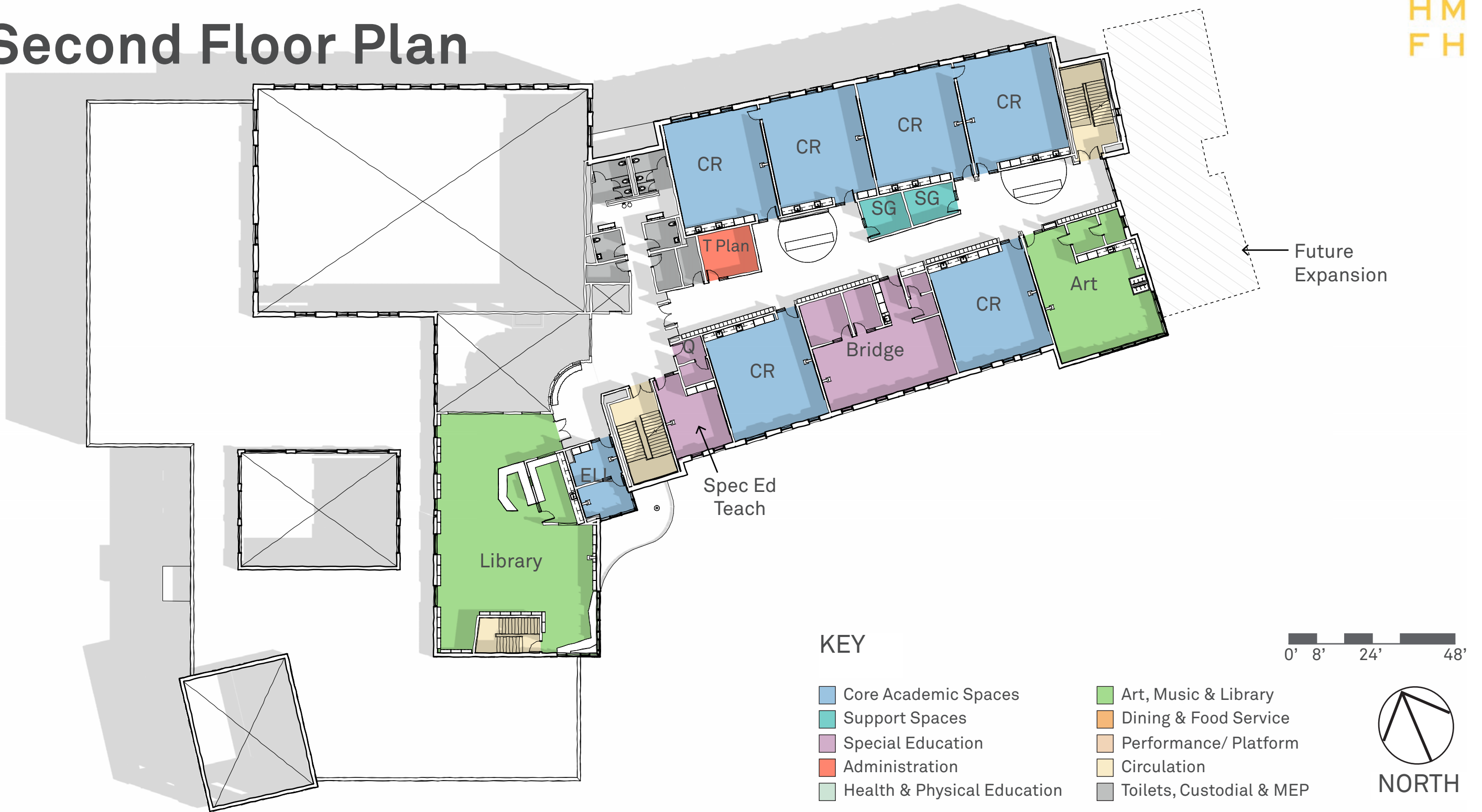
NORTH



First Floor Plan



Second Floor Plan



KEY











- | | |
|---|--|
| ■ Core Academic Spaces | ■ Art, Music & Library |
| ■ Support Spaces | ■ Dining & Food Service |
| ■ Special Education | ■ Performance/ Platform |
| ■ Administration | ■ Circulation |
| ■ Health & Physical Education | ■ Toilets, Custodial & MEP |



Third Floor Plan



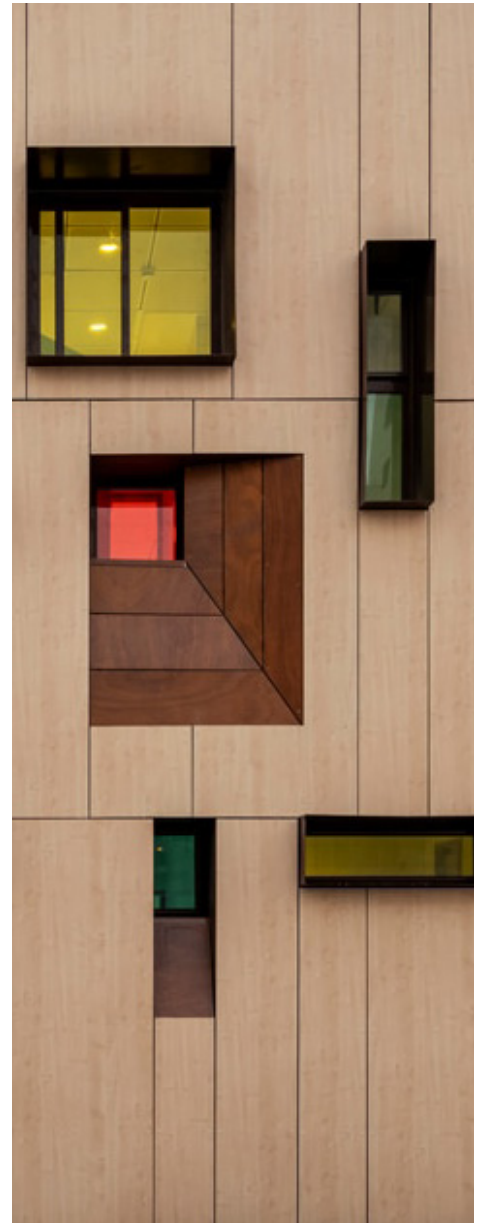
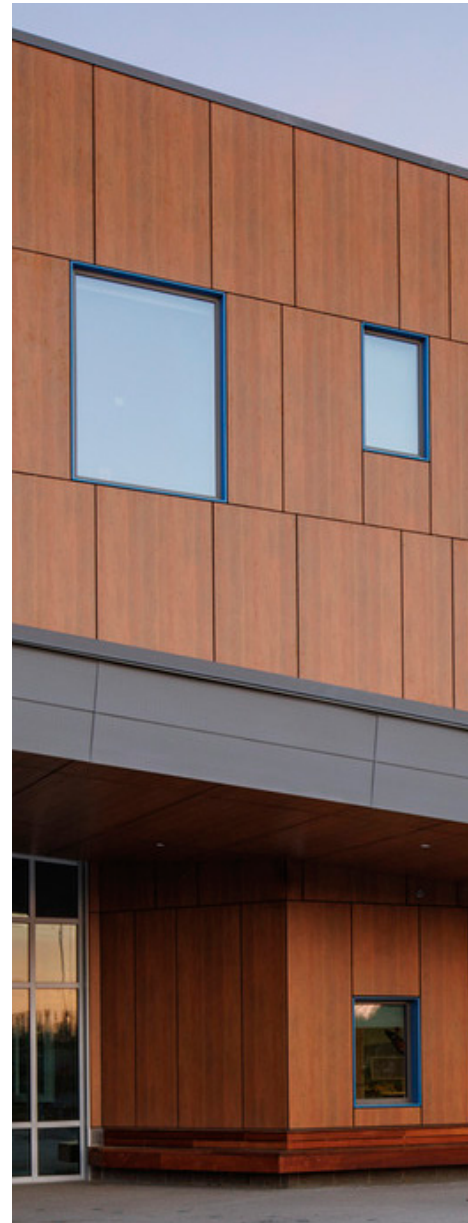
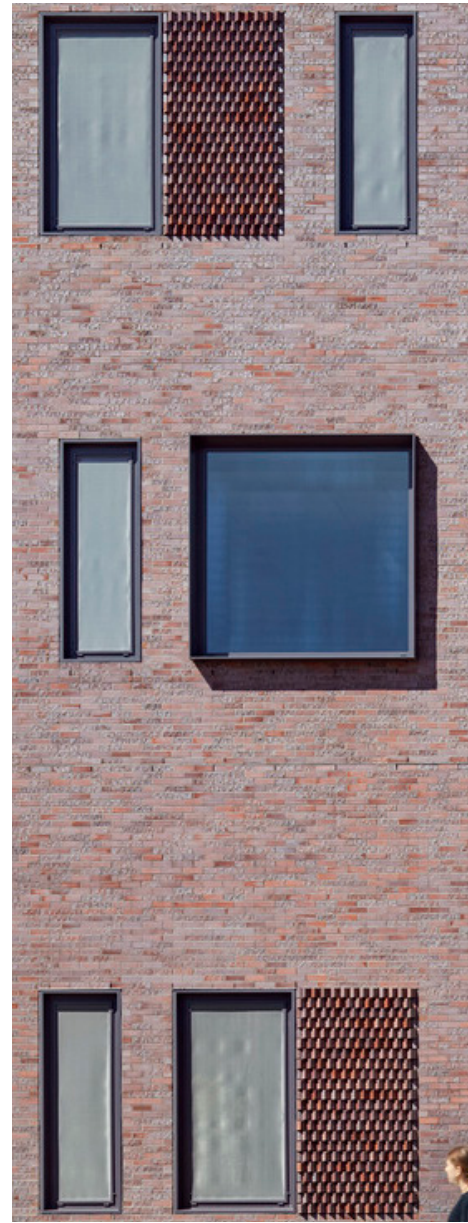
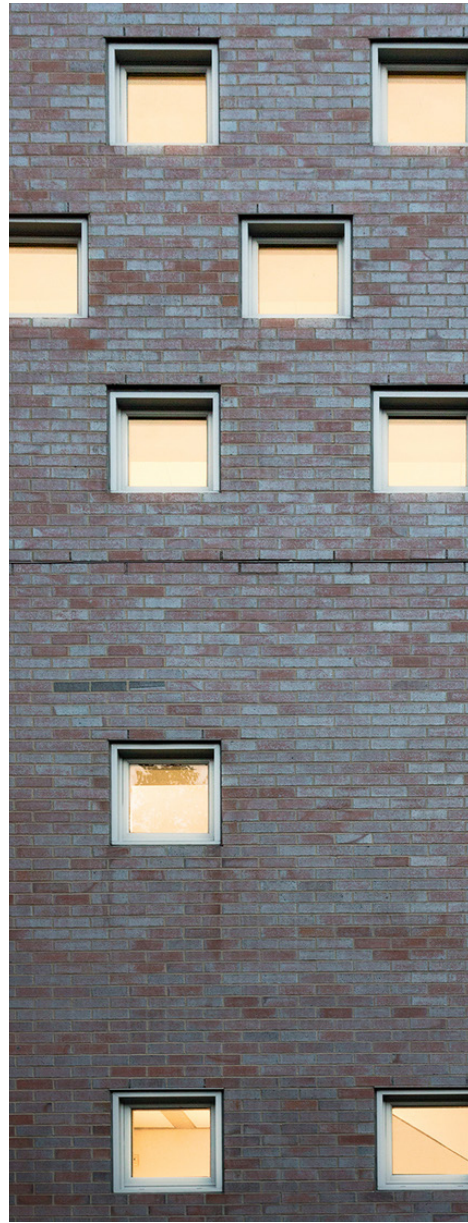
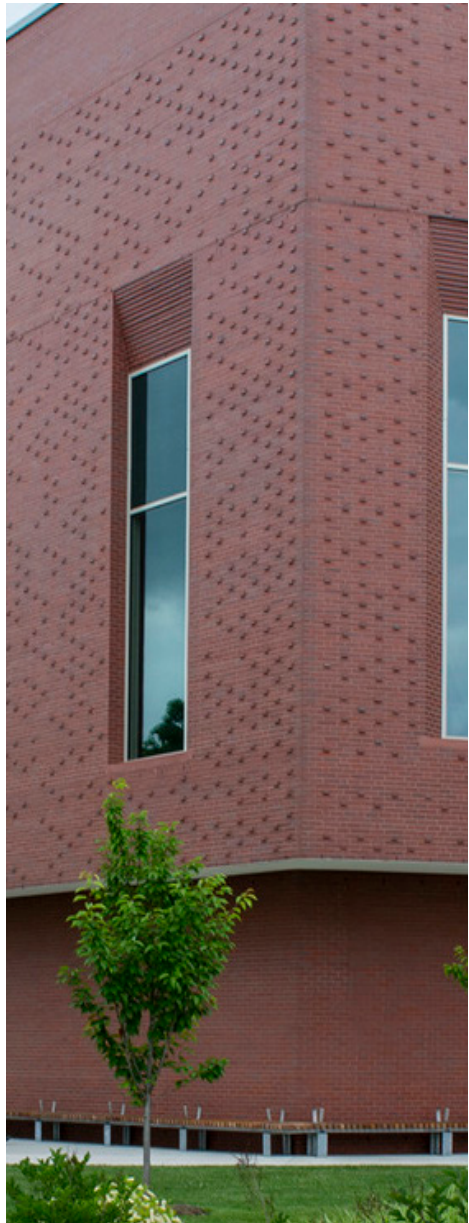
KEY

- | | |
|---|--|
|  Core Academic Spaces |  Art, Music & Library |
|  Support Spaces |  Dining & Food Service |
|  Special Education |  Performance/ Platform |
|  Administration |  Circulation |
|  Health & Physical Education |  Toilets, Custodial & MEP |



Exterior Envelope Materials Palette

Brick & Phenolic Wood Panel



Exterior Tour of Building

View from Blue Zone



Exterior Tour of Building

View from Bus Drop Off



Exterior Tour of Building

View of Main Entrance



Exterior Tour of Building

View from West on Derby Street



Exterior Tour of Building

View of Cafeteria Entrance



Exterior Tour of Building

View from Cherry Street Path



Exterior Tour of Building

View from Basketball Court



Exterior Tour of Building

View from Multipurpose Fields



Exterior Tour of Building

View of Gymnasium Entrance



HM

FH

HMFH ARCHITECTS