

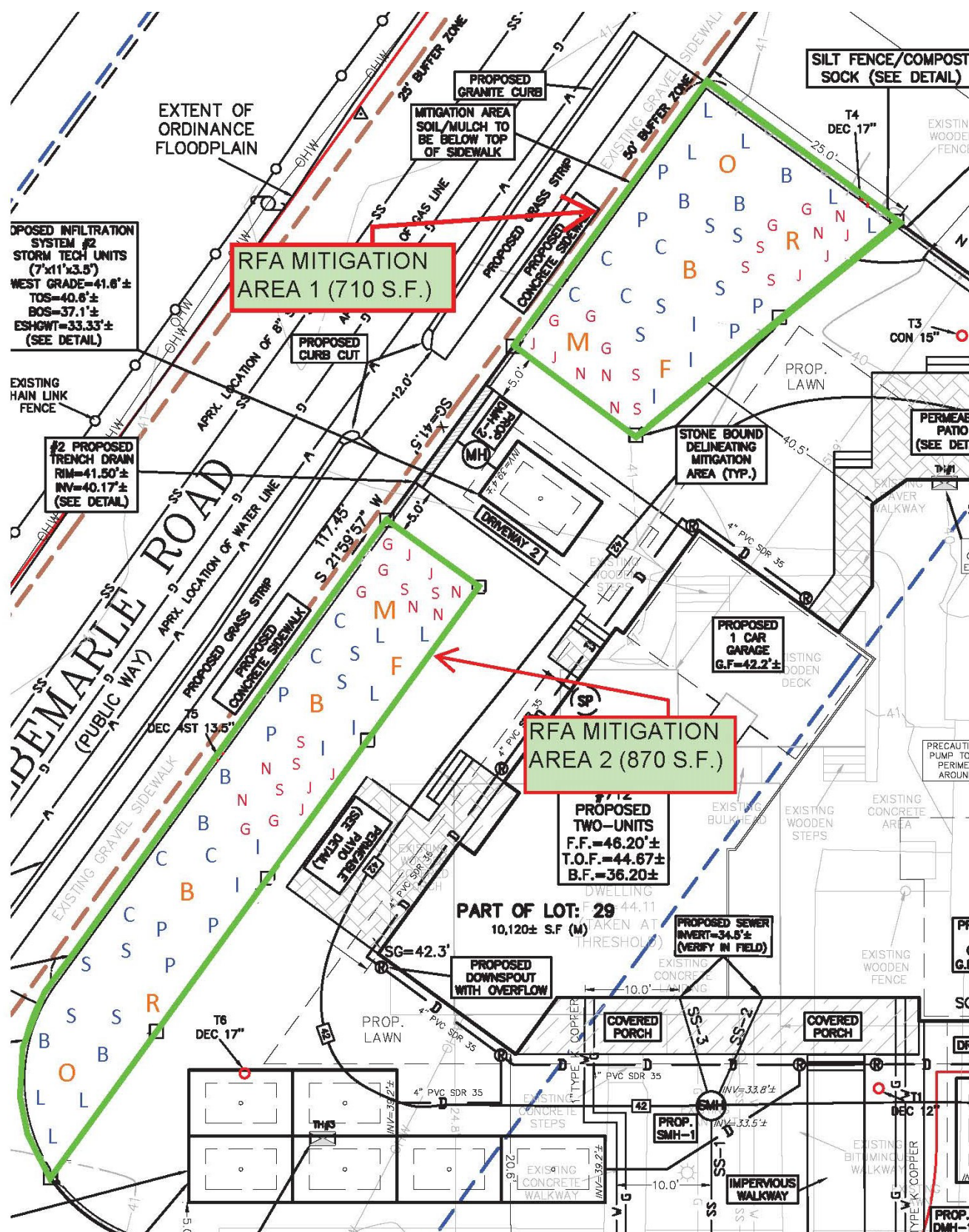
**PLANTING SCHEMATIC FOR RFA MITIGATION AREAS
712 WATERTOWN STREET, NEWTON**

PREPARED BY ECOTEC, INC.
SEPTEMBER, 12, 2024

RFA MITIGATION AREAS (710 S.F. and 870 S.F. – Total 1,580 S.F.)

Stratum; Species; Size; Spacing	Area 1 (710 S.F.)	Area 2 (870 S.F.)	Total
Saplings ; Various; 12.5' on-center	5/11"	6/15"	11/26"
O Northern Red Oak (<i>Quercus rubra</i> ; 2" Caliper)	1	1	2
M Red Maple (<i>Acer rubrum</i> ; 2" Caliper)	1	1	2
B River Birch (<i>Betula nigra</i> ; three-stem; 4" total Caliper)	1	2	3
R Eastern Redbud (<i>Cercis canadensis</i> ; 1.5" Caliper)	1	1	2
F Flowering Dogwood (<i>Cornus florida</i> ; 1.5" Caliper)	1	1	2
Shrubs (Evergreen and Deciduous); 4-5' height; 5.5' on-center	24	30	54
L Mountain Laurel (<i>Kalmia latifolia</i>)	5	6	11
S Serviceberry (<i>Amelanchier canadensis</i>)	5	6	11
C Gray Dogwood (<i>Cornus racemosa</i>)	4	5	9
P Sweet Pepper-bush (<i>Clethra alnifolia</i>)	4	5	9
I Inkberry (<i>Ilex glabra</i>)	3	4	7
B Bayberry (<i>Morella pensylvanica</i>)	3	4	7
Small Shrubs; Size Below; 4 pockets of 10; 2-3' height; 4' on-center	20	20	40
G Groundseltree (<i>Baccharis halimifolia</i>)	5	5	10
S Sheep Laurel (<i>Kalmia angustifolia</i>)	5	5	10
N New Jersey Tea (<i>Ceanothus americanus</i> ; 12-15")	5	5	10
J Common Juniper (<i>Juniperis communis</i> ; 12-15")	5	5	10

- Substitutions are subject to approval by Conservation Staff.
- Plants must be natives; cultivars and varietals will not be accepted.
- All excess soil must be removed and disposed of off-site.
- After planting, the area will be mulched with a 3" thick layer of a 4:1 mixture of decomposed leaf compost and natural colored bark mulch. The soil/mulch at the edge of the area will be below the elevation of the sidewalk.
- After planting the plants must be watered in well and watered periodically until they are established.



Note: The locations of the individual saplings and shrubs are shown for permitting and review purposes; the locations of the plantings in the field will be based on this plan subject to the discretion of the qualified wetland scientist. The planting area will be monitored annually for two years after it is established. A brief report will be provided to the Commission in a timely manner after each annual inspection. A Request for a Certificate of Compliance will be made following the second annual inspection.