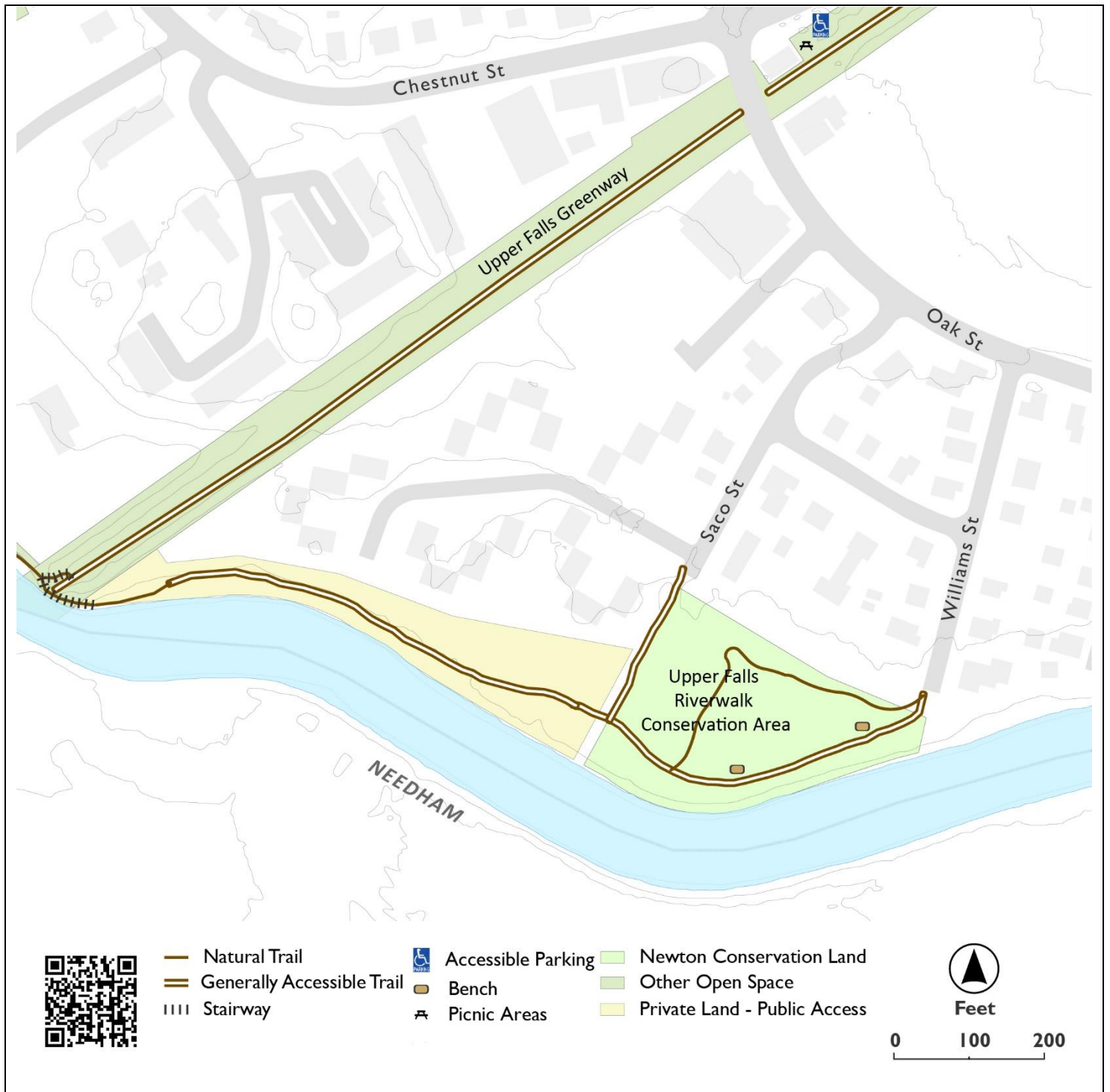


Upper Falls Riverwalk Conservation Area

City of Newton Conservation Area



To accommodate other users and to protect wildlife, vegetation, and trails:



Report an incident: Newton Police 617-796-2100

Report a trail problem: call 311 or conservation@newtonma.gov

Upper Falls Riverwalk Conservation Area

City of Newton Conservation Area

Upper Falls Riverwalk Access

Located in Upper Falls, the Upper Falls Riverwalk Conservation Area is readily accessed from the cul-de-sac ends of Saco and Williams Street, both of which are directly off of Oak Street.

Upper Falls Riverwalk History and Features

The Upper Falls Riverwalk Conservation Area, like all of Newton, was once occupied and cared for by the Massachusetts tribe, descendants of whom still live and make new history in the area.

When the city originally acquired the land in 1980, the 1.6-acre property was called the Charles River Pathway, but was recently renamed to the Upper Falls Riverwalk.

The Conservation parcel abuts private land owned by the Oak Park Condominium Association that has a perpetual public access easement for the trail.

The flat, grassy, shady path follows the eastern bank of the Charles River as it flows to the north between Newton and Needham. The path offers views of and direct access to the Charles River (in 2024, an Eagle Scout built a set of stairs leading from the trail to the River, facilitating access for canoes, kayaks, fishing, and bird-watching). Two benches allow walkers to rest and relax.

At the northern end of the parcel, high above the trail, is the Upper Falls Greenway rail-trail. A narrow trail continues from the Conservation Area, allowing hikers to continue to the north, under the Greenway and up a set of stairs to the Greenway or continuing along the Charles River to the Bobby Braceland Playground.

Upper Falls Riverwalk Trail Characteristics

The Upper Falls Riverwalk is **Generally Accessible***. Two benches allow walkers to rest.



Trail Surface: Stone dust or firm soil. Where grass exists, it is kept mowed.



Trail width: Generally 5 feet



Trail length: 1,800 feet or 0.3 miles



Trail Cross slope: Generally level.



Trail Obstructions: None.

***Newton's Generally Accessible Trails** are relatively flat, they have a firm, level footbed, and are mostly free of tripping hazards. They are wide enough to accommodate many mobility devices.

Newton's Natural Trails are unimproved and may have steep, uneven, or rocky/rooty footbeds; elevated plank "bog bridges", or other obstacles that make the trails challenging to negotiate.

Newton Conservation Land is cared for by professional land managers, City staff, and volunteer Stewards.

To report a problem or become a Land Steward, please contact the Newton Conservation Commission

1000 Commonwealth Ave, Newton, MA 02459 / Conservation@NewtonMA.gov / 617-796-1152.