

Newton Parks, Recreation, & Culture Department

Memorial Playground at Oak Hill Park

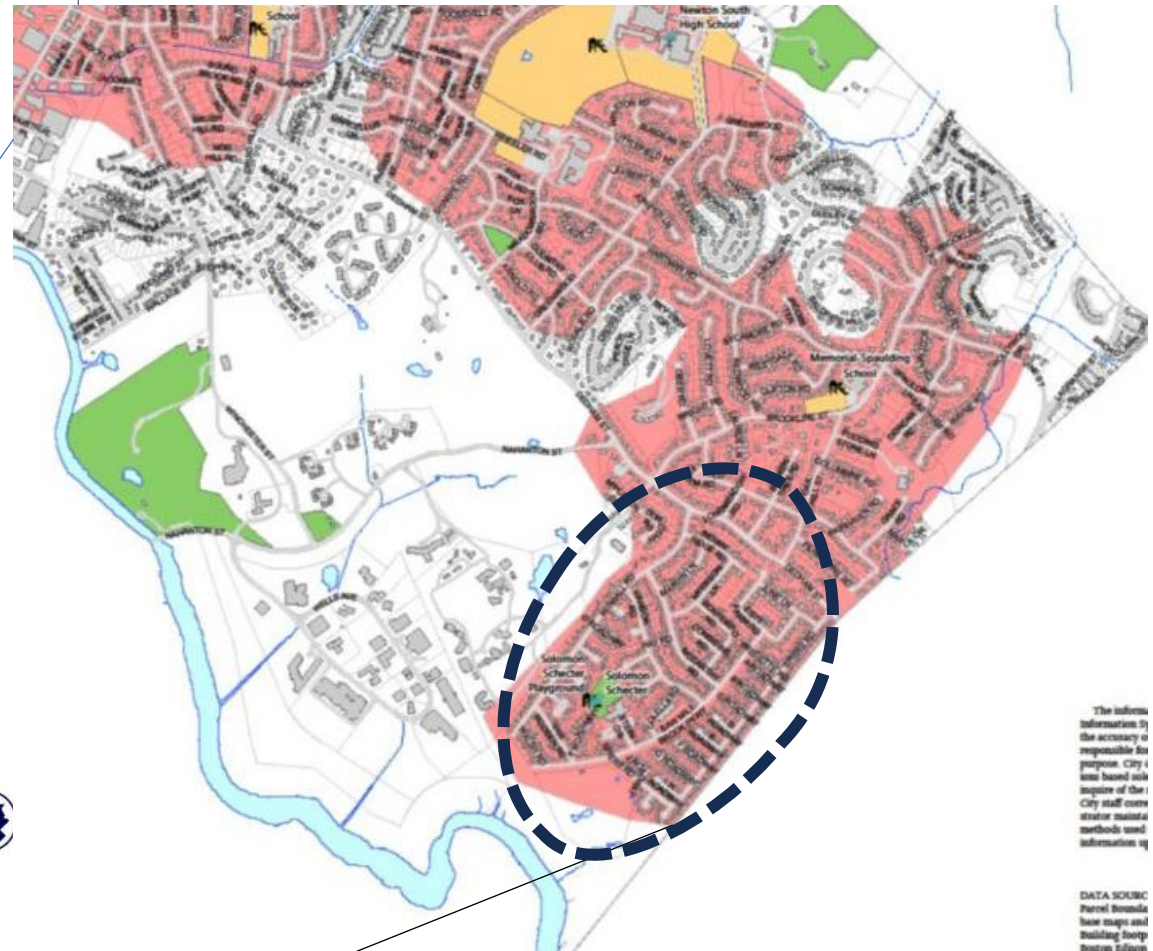
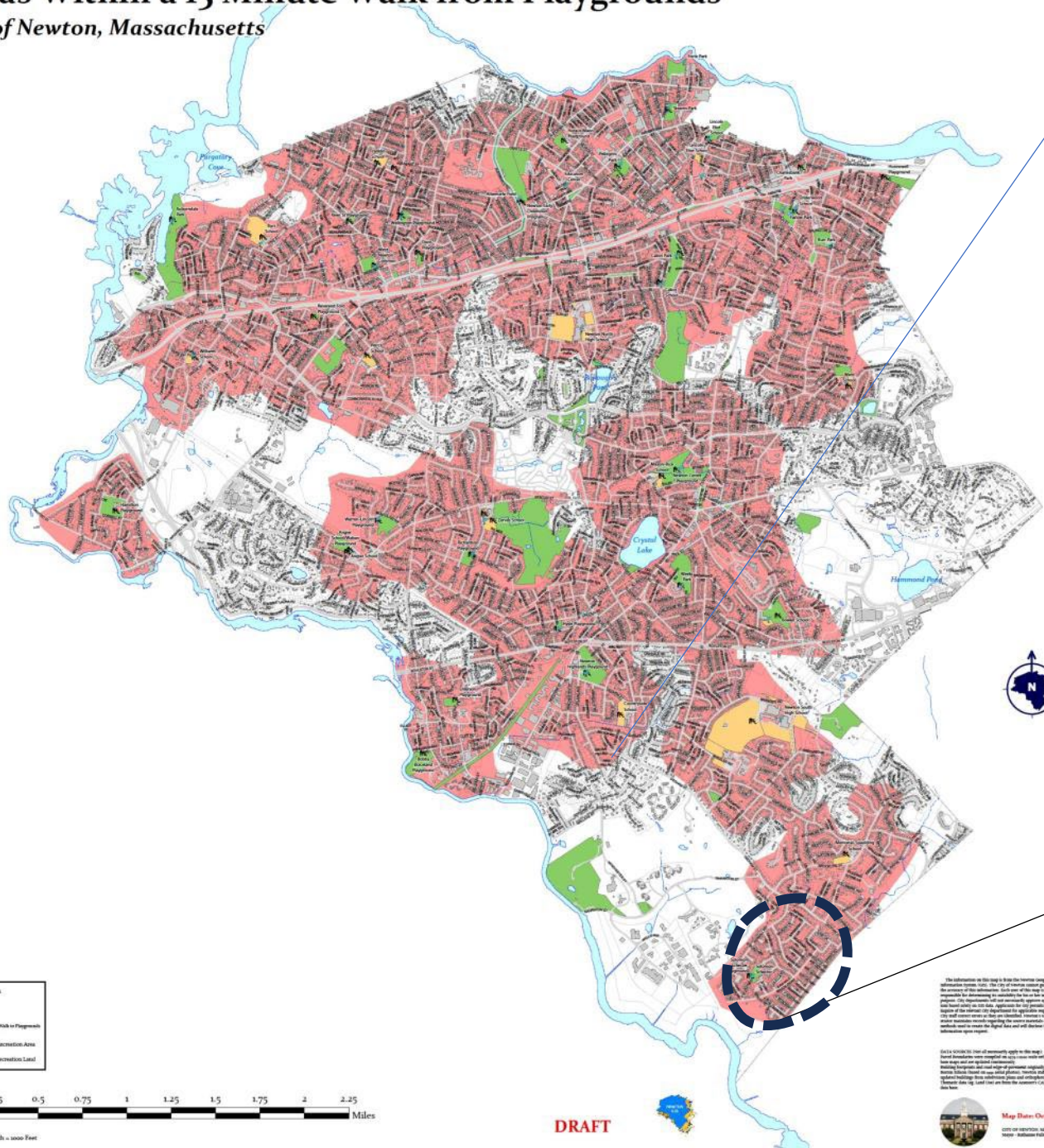
Community Meeting



November 7, 2024

Areas Within a 15 Minute Walk from Playgrounds

City of Newton, Massachusetts



The information is the accuracy or responsible for purpose. City is not liable for any use of the information. City staff cannot guarantee the accuracy of the information.

DATA SOURCE: Parcel Boundary, Base Maps, and Building Footprint from various sources.

The information on this map is for informational purposes only. The City of Newton does not warrant the accuracy or completeness of the information. The City of Newton is not responsible for any errors or omissions. The City of Newton is not responsible for any damages or losses resulting from the use of this information. The City of Newton is not responsible for any actions taken based on the information provided on this map.

Map Date: October 24, 2023
 City of Newton, Massachusetts
 Parks, Recreation & Culture

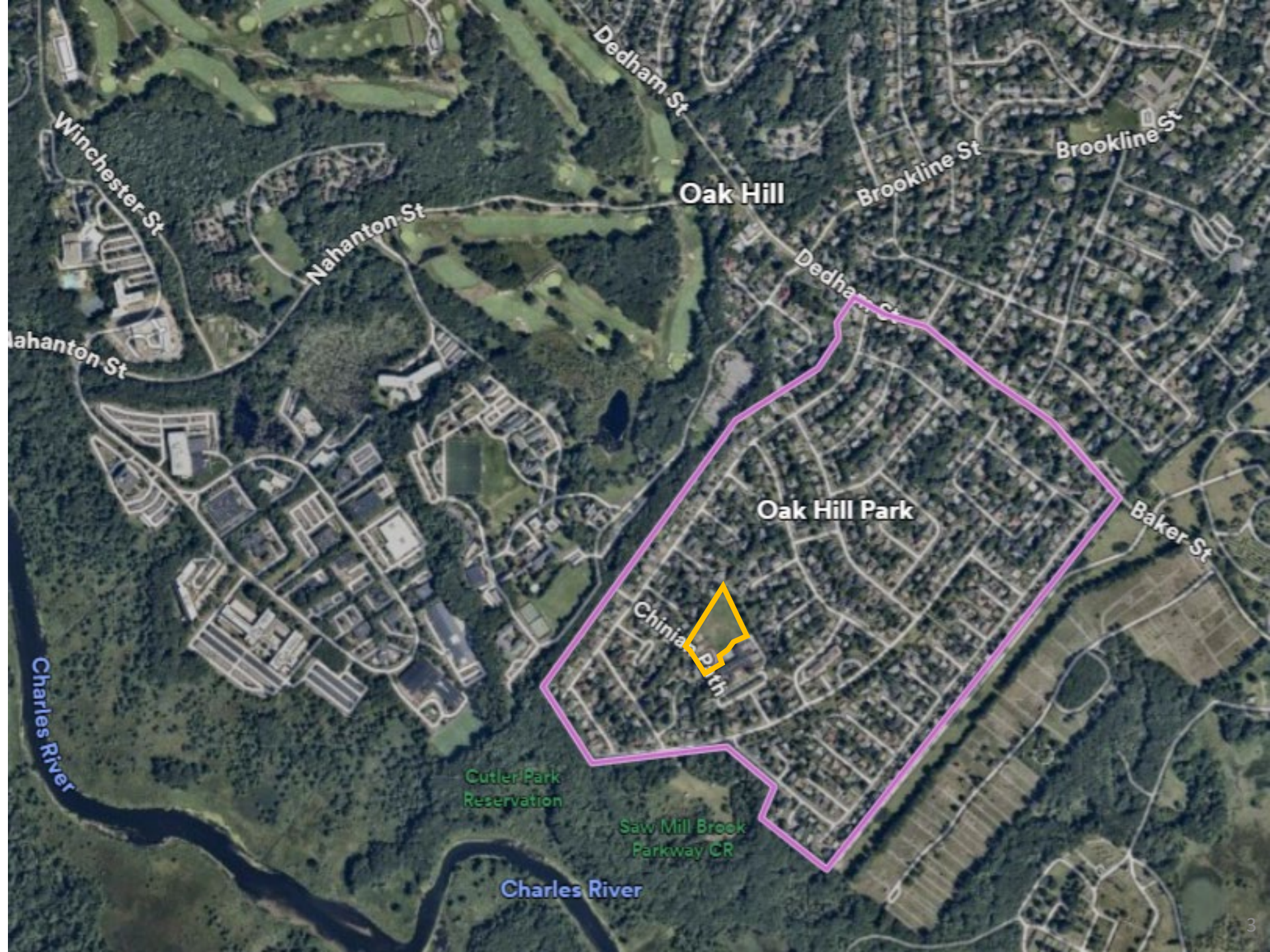


- Playground
- School
- 15 Minute Walk to Playgrounds
- Park or Recreation Area
- School Recreation Land



DRAFT

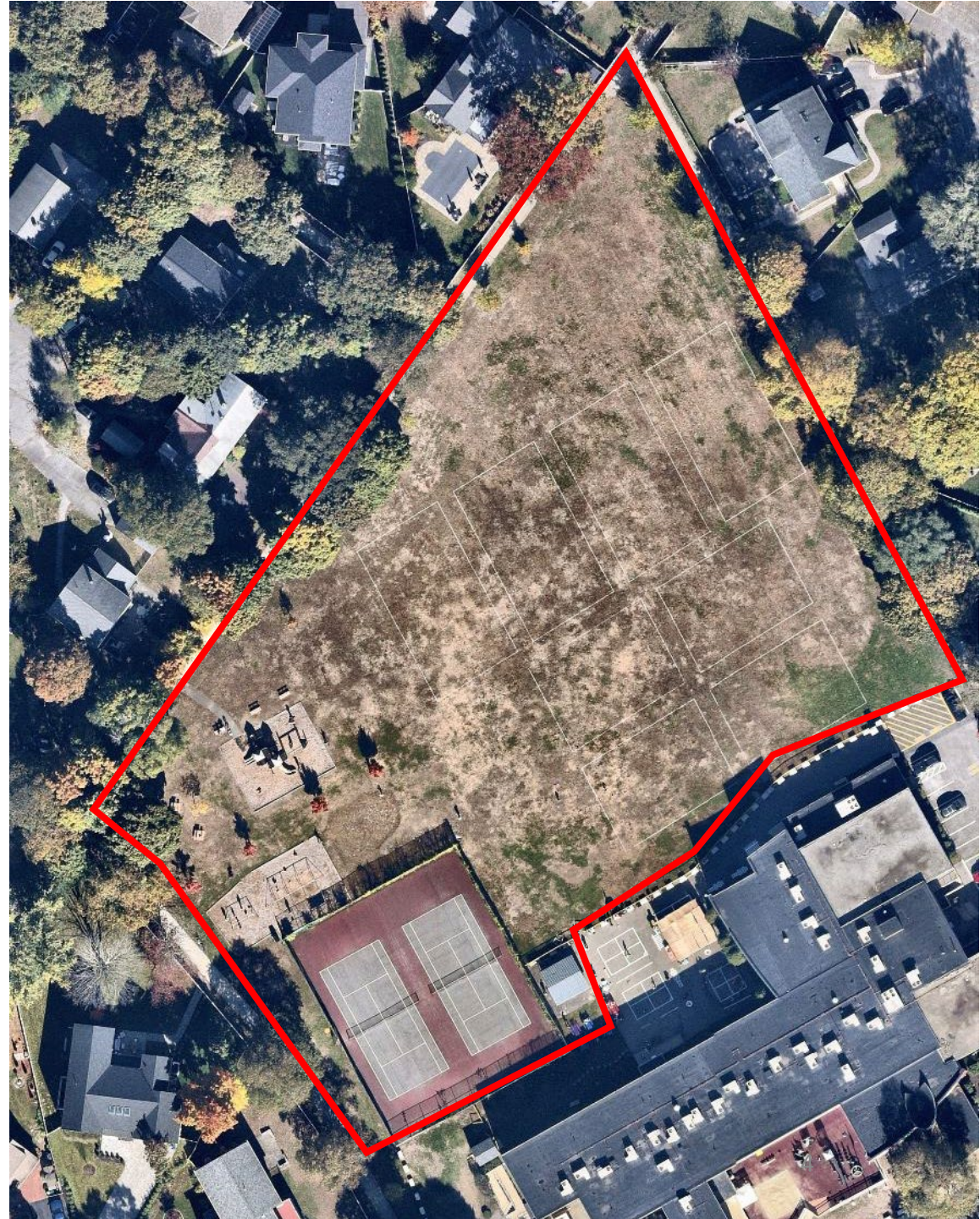
589 letters to
abutters in Oak
Hill Park



Oak Hill Park

- 3.0 acres
- Open lawn area/multi-purpose practice field
- Tennis courts
- Perimeter tree plantings
- Playground

- Centrally-located in residential neighborhood
- Abutting Solomon Schechter Day School
- Connections to multiple walking/biking paths



Renovation Goals

1. Replace aged playground equipment
2. Repair and update court
3. Enhance accessibility & inclusion
4. Support a safe, shared neighborhood space

Renovation Guides

- \$225,000 budget
- Playground and larger park are shared by all Newton residents *and* community members
- Playground enhancements directly related to strength of community support



Improvements Begun

Fall 2023: Multiple out-of-date and aged infrastructure and equipment have already been removed



The main playscape was installed in 1996 and is due for an upgrade next!

Tennis Courts

Existing Conditions



Proposed Court Rehab

- Same footprint: ~120' x 100'
- New fence mesh: 440 linear feet
- 1 certified tennis court: 78' x 36'
 - + 21' per end (run-out zone)
 - + 12' per side (run-out zone)**120' x 60' total tennis court area**
- Two half-court basketball: 56' x 40'
 - Not wide enough for full court
 - (3-point line arc = 39'6")
- New gates—access to play area
- Accessible paths to pedestrian gates



Tennis/Basketball Court Renovation Draft Cost Estimate

<i>Component</i>	<i>Cost</i>
Replace tennis posts + nets	\$5,000
Add basketball hoops (x2)	\$18,000
Traditional Seal & Paint	\$45,000
New Fence Mesh + Gate	\$45,000
Courts Subtotal	\$113,000



Elements of Play



Physical

Joy of movement: motor skills, muscle, cardio, and bone density



Cognitive

Joy of learning: curiosity, understanding of causal relationship and knowledge of the world



Social-Emotional

Joy of being together: teamwork, tolerance, and sense of belonging



Creative

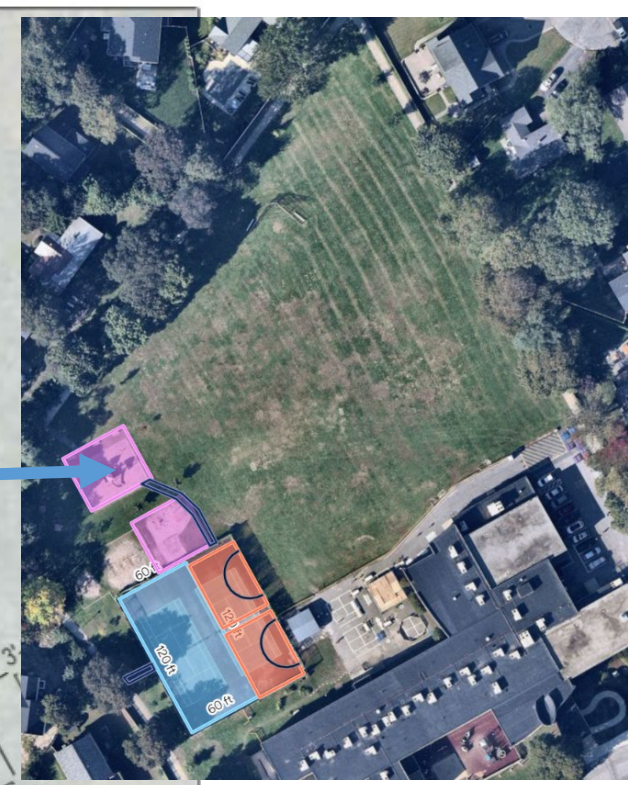
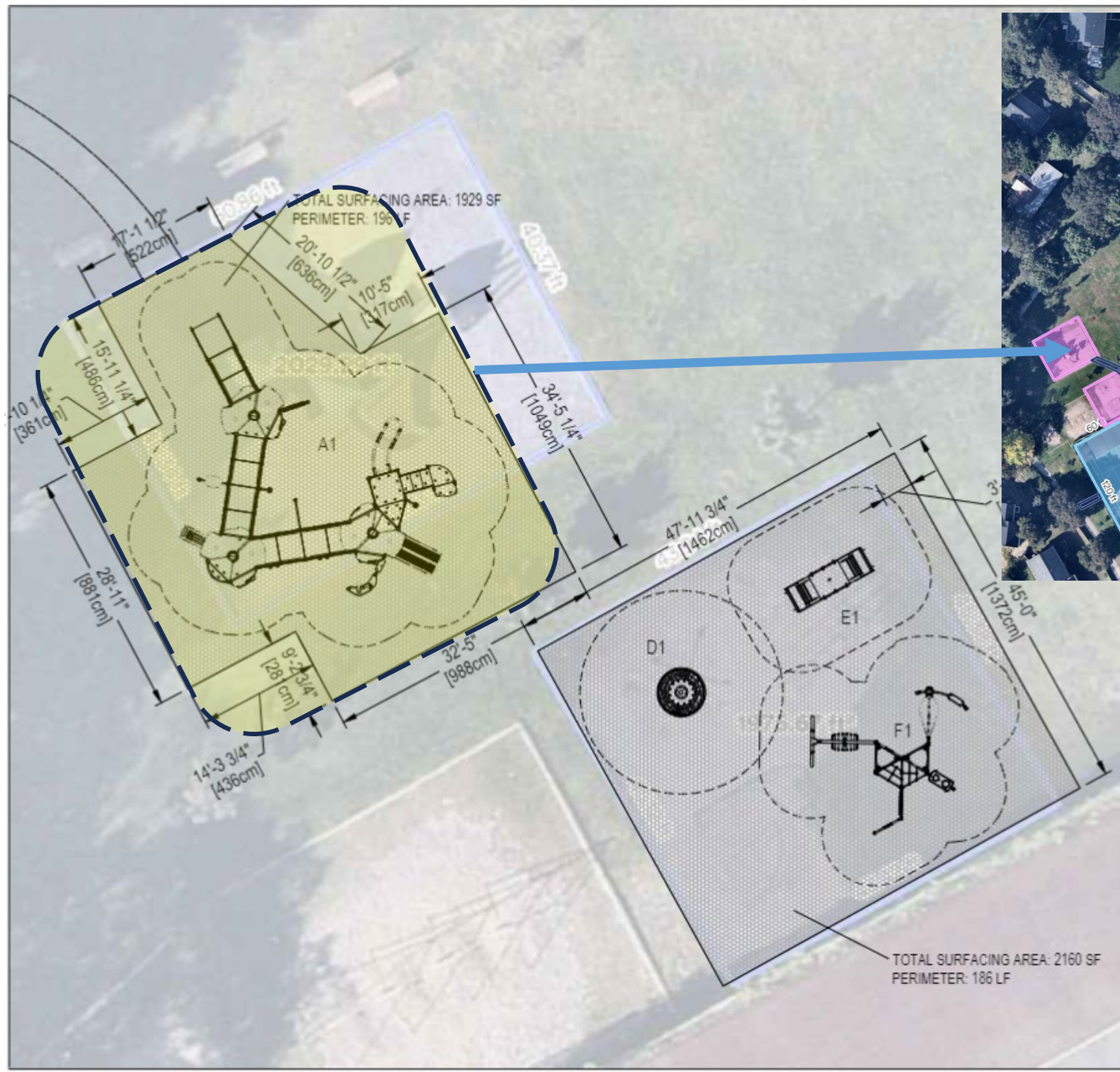
Joy of creating: co-creation and experimenting with materials

Accessibility: “Can I get there?”

Inclusion: “Can I stay?”

Usability: “Can I play?”

Play Area #1



TOTAL SURFACING AREA: 2160 SF
PERIMETER: 186 LF



*Manipulative Counting Panel (experimenting)
*Crawl Through Panel (Climbing/Crawling)
*Smiley Panel with Scoops (Experimenting)
*Straight Slide (Sliding)
*Manipulative Panel with Gears (Experimenting)
*Manipulative Panel (On Ramp, Experimenting)
*Manipulative Panel (On Ramp, Experimenting)
*Manipulative Panel (On Ramp, Experimenting)
*Manipulative Panel (On Ramp, Experimenting)
*Climbing Wall (Climbing/Crawling)
*Manipulative Panel with Flowers (Experimenting)
*Double Slide (Sliding)
Modular Slide
Climbing Wall
Talk Tubes
Music Panel
Sand Play Counter
Bench
Hammock
Turning Bar

Play Activity	Elevated	Accessible	Ground	Accessible	Ground Level Play Type
*Manipulative Counting Panel (experimenting)	•	•			
*Crawl Through Panel (Climbing/Crawling)	•	•			
*Smiley Panel with Scoops (Experimenting)	•	•			
*Straight Slide (Sliding)	•	•			
*Manipulative Panel with Gears (Experimenting)	•	•			
*Manipulative Panel (On Ramp, Experimenting)	•	•			
*Manipulative Panel (On Ramp, Experimenting)	•	•			
*Manipulative Panel (On Ramp, Experimenting)	•	•			
*Manipulative Panel (On Ramp, Experimenting)	•	•			
*Climbing Wall (Climbing/Crawling)	•	•			
*Manipulative Panel with Flowers (Experimenting)	•	•			
*Double Slide (Sliding)	•	•			
Modular Slide	•	•			
Bclimbing Wall	•	•			
Talk Tubes			•	•	Experimenting
Music Panel			•	•	Experimenting
Sand Play Counter			•	•	Experimenting
Bench			•	•	Gathering
Hammock			•	•	Gathering
Turning Bar			•	•	Training
TOTALS	14	14	9	9	5

Elevated Activities

Accessible Elevated

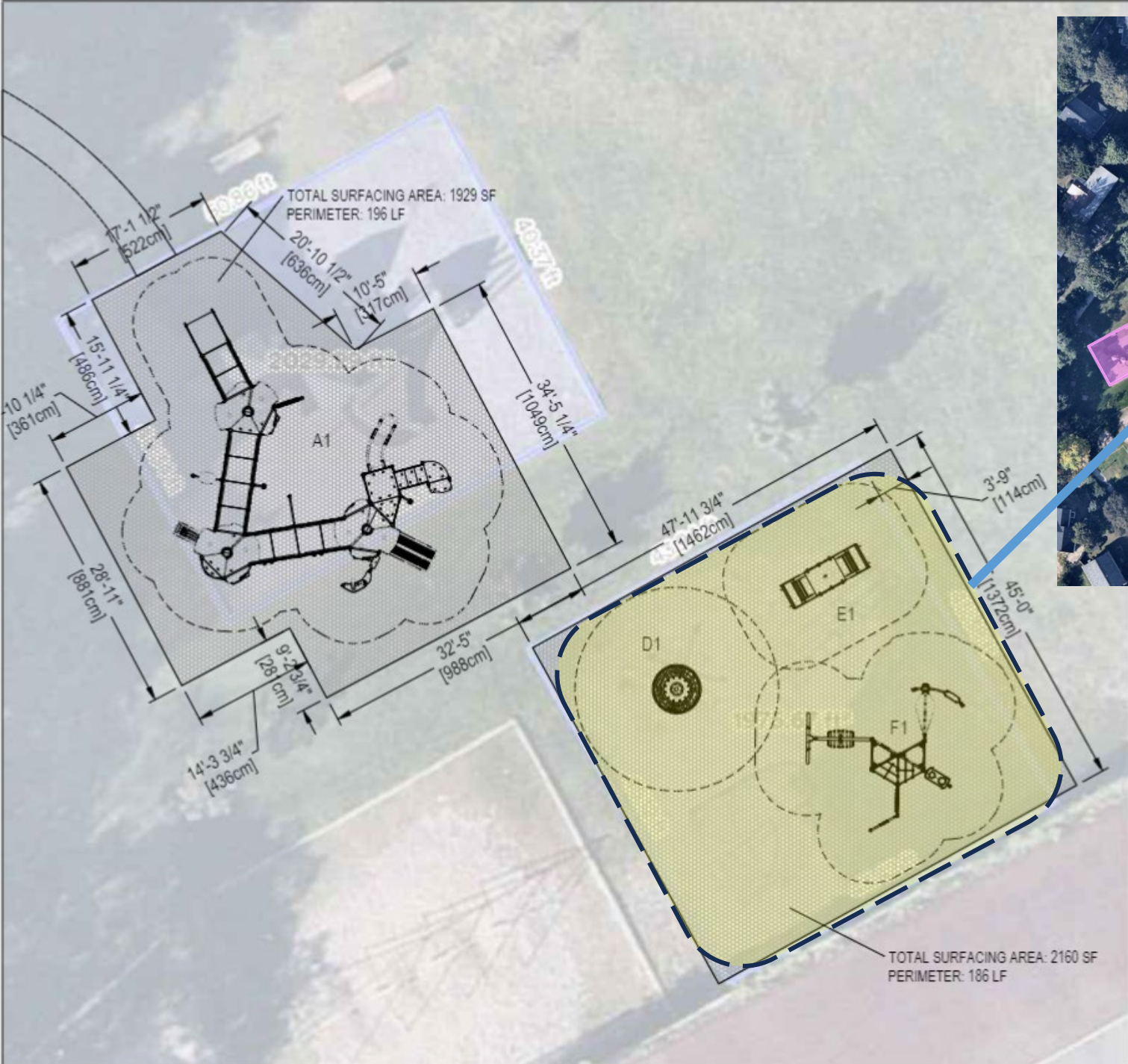
Ground Level Activities

Accessible Ground Level

DIFFERENT Ground Level Play Types

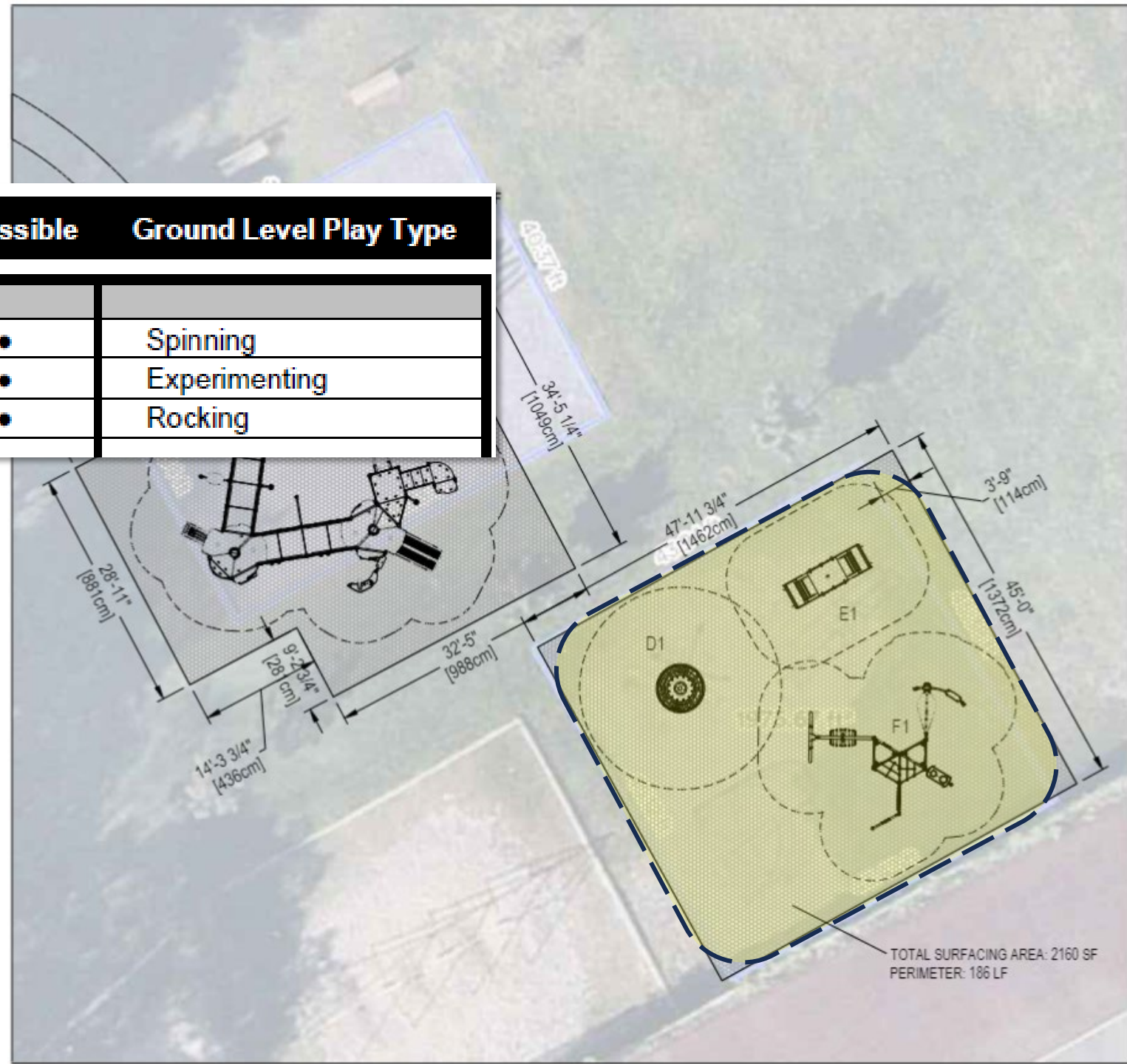


Play Area #2



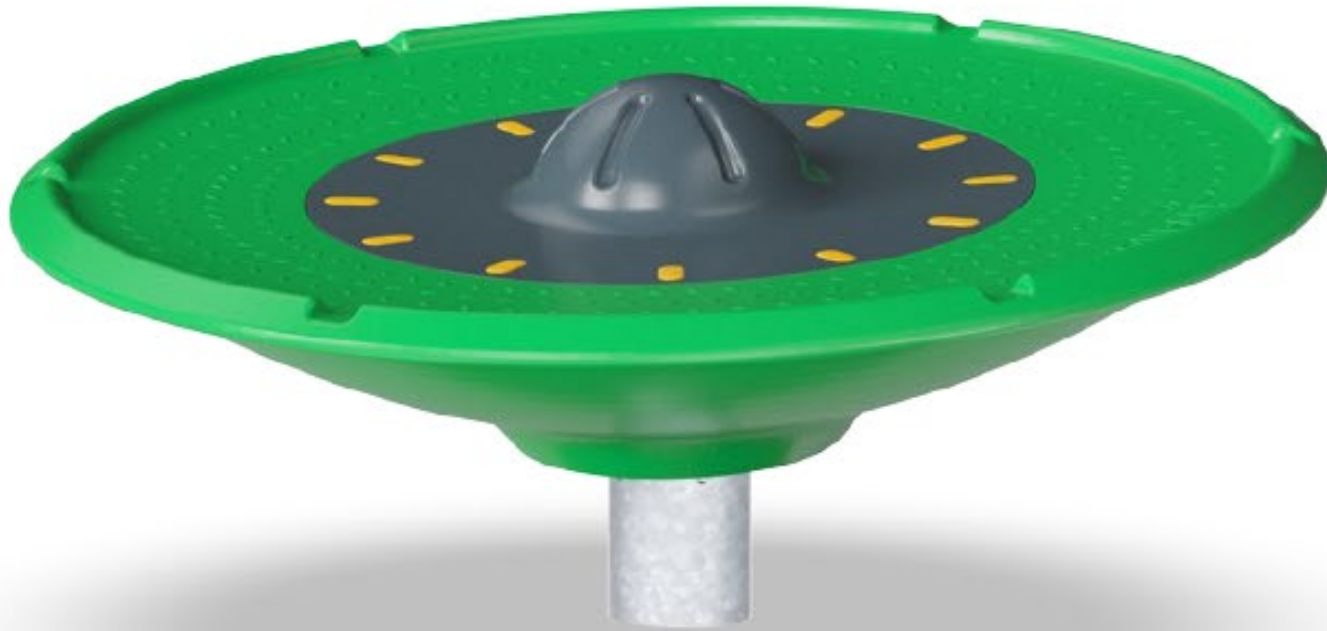
Play Area #2

Item Number / Name	Ground	Accessible	Ground Level Play Type
GXY959 Spinner Disc	•	•	Spinning
PCT802 Funpoint, Ultimate	•	•	Experimenting
M186P Garden Seesaw	•	•	Rocking



TOTAL SURFACING AREA: 2160 SF
PERIMETER: 186 LF

Spinner Disc



Item no. GXY959012-3717

General Product Information

Dimensions LxWxH	5'9"x5'9"x2'5"
Age group	5 - 12
Play capacity (users)	7
Color options	

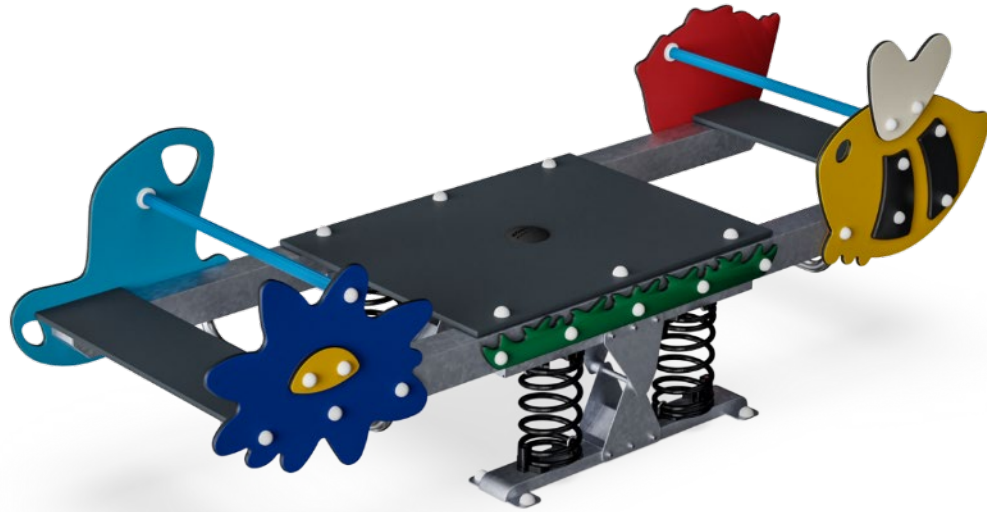


Spinner Disc



Garden Seesaw

M186



Item no. M18601-01P

General Product Information

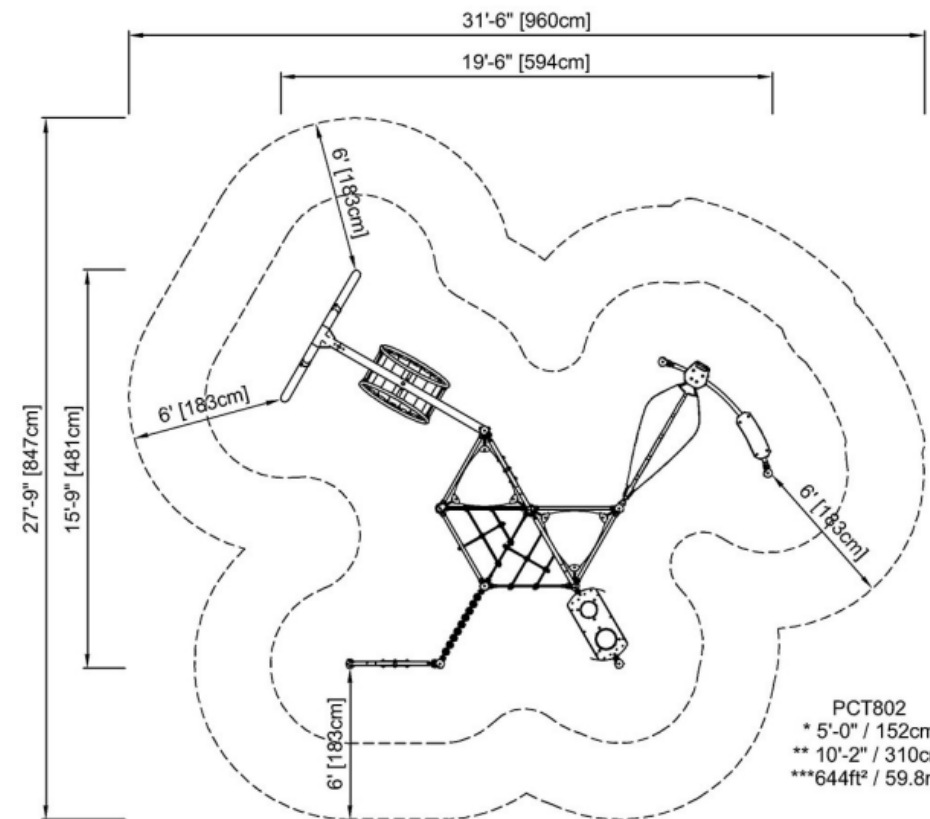
Dimensions LxWxH	3'7"x10'9"x3'7"
Age group	2 - 12
Play capacity (users)	10
Color options	●



Funpoint, Ultimate



Elevated activities 0	Accessible elevated activities	Accessible ground level activities	Accessible ground level play types
Present	0	6	3
Required	0	3	3



No.	Description	Discount %	Net Price
PCEP-CUSTOM 	PCEP-CUSTOM 510113	15.00	96,968.00
<u>M18670-12P</u> 	Garden Seesaw - 1 Support In-ground 60cm	15.00	7,335.50
<u>PCT802-0901</u> 	FUNPOINT, ULTIMATE IN-GROUND 90CM	15.00	31,161.00
<u>GXY959010-3717</u> 	SPINNER DISC - DARK BLUE INGROUND	15.00	8,602.00

Discount	Net Price
25,423.50	144,066.50
	10,124.50
	154,191.00

Also

Surfacing: Rubber Mats and Engineered Wood Fiber

Swings: New belt and bucket seats



Memorial Playground

DRAFT Cost Estimate for Renovation

Courts Subtotal	\$113,000.00
-----------------	--------------

Playground - KOMPAN	
PCEP-Custom	\$96,968.00
Element 1: Garden Seesaw	\$7,335.50
Element 2: Spinner Disc	\$8,602.00
Element 3: Funpoint, Ultimate	\$31,161.00
Swings	\$4,000.00
Equipment Subtotal	\$148,066.50
Surfacing and Installation	\$148,066.50
Total Subtotal	\$409,133.00
Contingency (20%)	\$81,826.60
Freight	\$10,125.00
Total Total	\$501,084.60



Paying and Implementing

PRC: Court upgrades and a play area?

Fundraising for second play area?

Community Preservation Act funds request?

PRC budget + fundraising for full build?



Question and Thoughts on...

1. Courts?

2. Playground Areas?

3. *Are there any additional field uses or amenities that would support the playground and court areas?*

For additional Comments and input, please email us at:

Parks@newtonma.gov

or visit us at: www.newtonma.gov/parkprojects

