

CITY OF NEWTON

IN BOARD OF ALDERMEN

PROGRAMS AND SERVICES COMMITTEE REPORT

WEDNESDAY, JUNE 10, 2015

Present: Ald. Sangiolo (Chairman), Hess-Mahan, Norton, Baker, Rice Leary, Kalis and Blazar

Also Present: Ald. Fuller, Yates, Johnson, Albright, gentile, Cote, Ciccone, Harney, Crossley and Brousal-Glaser

City Staff Present: David Olson (City Clerk), Marie Lawlor (Assistant City Solicitor), Karyn Dean (Committee Clerk), Marjorie Butler and Nancy Levine (Elections Commissioners)

#137-15 THE NEWTON ELECTION COMMISSIONERS requesting that the Board of Aldermen move the polling locations currently located at the Memorial Spaulding, Countryside, and Bowen Schools to the Newton South High School Gym; and that the polling location currently at Fire Station #1 be moved to the Grace Episcopal Church. This request is being made to provide better voting locations for Newton's voters. [05/19/15 @ 3:53PM]

ACTION: **A. MOVE TO NEWTON SOUTH HIGH SCHOOL: HELD 4-0**
Ald. Rice, Leary, Kalis and Blazar not voting
B. MOVE TO GRACE EPISCOPAL CHURCH: APPROVED 7-0
(Ald. Blazar not voting)

NOTE: David Olson, City Clerk joined the Committee as well as Marjorie Butler and Nancy Levine from the Election Commission. Mr. Olson provided a handout of information that was utilized at the Election Commission meeting when they voted this change. It is attached.

Mr. Olson asked that the item be split into two parts: Part A. the move to Newton South High School; and Part B. the move to Grace Episcopal Church. He requested that the move to Newton South be held at this time. The School Administration was in support of this, which is why the Elections Commissions voted the move, but they contacted him recently and would like more time to consult with the School Committee. The Committee voted to hold Part A. as requested.

Ald. Leary noted that she met with people at Grace Episcopal Church and she is pleased the polling location is being moved from the Fire Station. It was not an ideal location. Her only concern was that the church's parking lot is rather small and there is limited parking. However, it is certainly not more limited than the fire station. Other possibilities in the area had not worked out so this is a good choice. The Election Commissioners went to the site to look at the parking during the day. Church Street does provide some parking and some of the streets can be heavily parked during school hours, but he feels there are spaces. There is also a small parking lot at the church itself which will be utilized for handicapped parking.

There is a plan to notify voters, just as was done when the locations were moved from Cabot and Zervas. A brightly colored postcard was sent with the information to voters and on election day itself, A-frames were placed at the old polling locations with maps to direct voters to the new locations. In this case, the move is just down the street about ¼ mile and on Church Street. Mr.

Olson feels there is enough time to notify voters. He would prefer to notify near the end of the summer so residents don't forget and the information will also be put out in The Tab.

It was asked when Mr. Olson might be able to move forward with voting the move to Newton South High School. He explained that the school administration wants to discuss this with the School Committee and there is a School Committee meeting on June 15th. Mr. Olson cannot attend that meeting, but Mike Cronin will. He will not have any new information until that meeting takes place. If the decision is not made soon enough, he may have to wait until the next election cycle to make that move.

Ald. Hess-Mahan explained that voting days were originally scheduled on Tuesdays because it was required that all polling locations be within one day's walk of wherever anyone lived in the district. Because of Sabbath days, it was set so that one could walk on Monday to get to the polls by Tuesday, then walk back without any interference with Sabbath Days.

The Committee voted in favor of Part B. 7-0 with Ald. Blazar not voting.

#31-15 PROGRAMS & SERVICES COMMITTEE proposing an ordinance to limit the use of leafblowers. [01/26/15 @ 2:20PM]

ACTION: **HELD 8-0**

NOTE: A public comment session was held on items #31-15 and #31-15(2). Presentations were made from *Newton Safe and Sound* and from Joe Caruso, who was representing the landscaping business community. The Committee also heard testimony from approximately 70 speakers and will take this all of this information into consideration as the work on this ordinance continues. Ald. Sangiolo, Chairman, explained that the item will be discussed several more times over the coming months. She does not anticipate a vote on this proposal until the fall, at the very earliest. The Committee voted to hold both items.

Chairman's Note: A full report of the presentations, public comments and submissions will be forthcoming.

#31-15(2) THE PROGRAMS & SERVICES COMMITTEE requesting to amend *Chapter 20-13, Noise Control*, relative to time restrictions on the use of yard, garden or grounds maintenance equipment. [03/19/15 @ 12:14PM]

ACTION: **HELD 8-0**

NOTE: See note above.

Respectfully Submitted,

Amy Mah Sangiolo

Change of Polling Locations

Rating Criteria

| WARD | PRECINCT | POLLING LOCATION | Handicap Access | Parking | Visibility | Walking Distance | Bathroom Access | Function of Space | Security | Public Safety | HV AC | Exclusive Use | Total Rating |
|------|----------|---------------------------|-----------------|---------|------------|------------------|-----------------|-------------------|----------|---------------|-------|---------------|--------------|
| 1 | 2 | Fire Station #1 | 3 | 3 | 5 | 5 | Y | 3 | 2 | 2 | 2 | 3 | 28 |
| 6 | 1 | Bowen School | 5 | 2 | 3 | 5 | Y | 1 | 2 | 5 | 3 | 2 | 28 |
| 8 | 2 | Memorial Spaulding School | 5 | 5 | 5 | 5 | Y | 1 | 2 | 5 | 3 | 2 | 33 |
| 7 | 1 | Church of the Redeemer | 4 | 2 | 2 | 3 | Y | 3 | 5 | 5 | 5 | 5 | 34 |
| 3 | 2 | Peirce School | 3 | 3 | 5 | 5 | Y | 5 | 3 | 5 | 5 | 5 | 39 |
| 4 | 1&4 | Burr School | 3 | 2 | 5 | 4 | Y | 5 | 5 | 5 | 5 | 5 | 39 |
| 7 | 3&4 | Ward School | 2 | 4 | 5 | 5 | Y | 4 | 5 | 5 | 5 | 5 | 40 |
| 1/3 | 7/2 | Bigelow Middle School | 5 | 5 | 3 | 5 | Y | 5 | 5 | 5 | 5 | 2 | 40 |
| 2 | 1 | Horace Mann School | 5 | 3 | 5 | 3 | Y | 5 | 5 | 5 | 5 | 5 | 41 |
| 8 | 1 | Oak Hill Middle School | 3 | 3 | 5 | 5 | Y | 5 | 5 | 5 | 5 | 5 | 41 |

Lowest Rated Locations

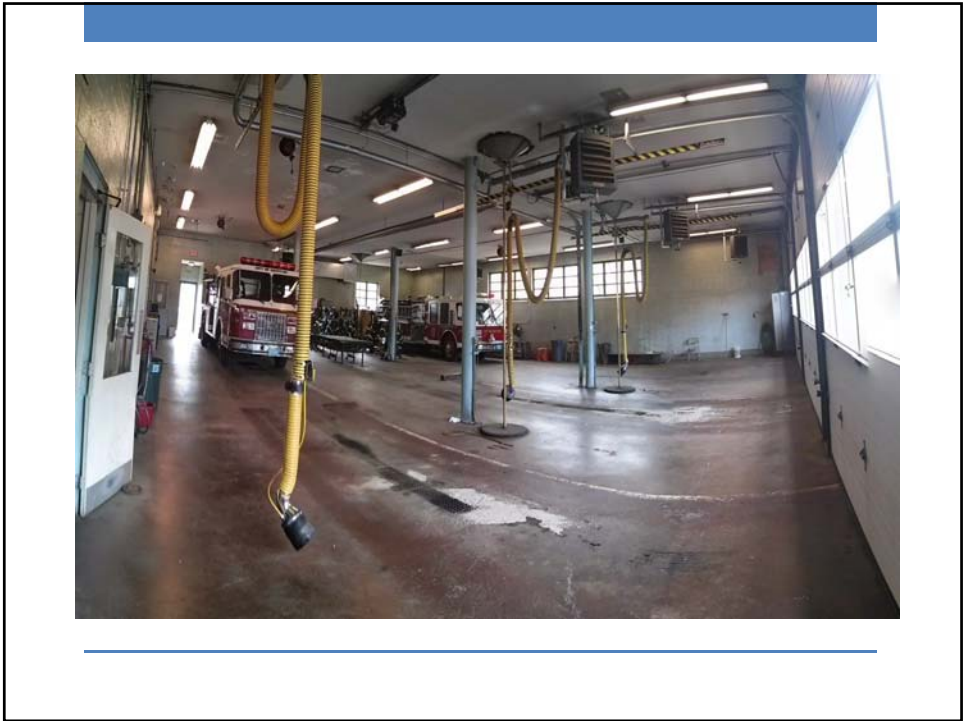
- Fire Station #1
 - Bowen School
 - Memorial Spaulding
 - Church of the Redeemer
 - Peirce School
-

Locations for Discussion

- Fire Station #1
 - Bowen School
 - Memorial Spaulding
 - Countryside School
-

- Fire Station #1
 - Parking
 - Safety
 - Space





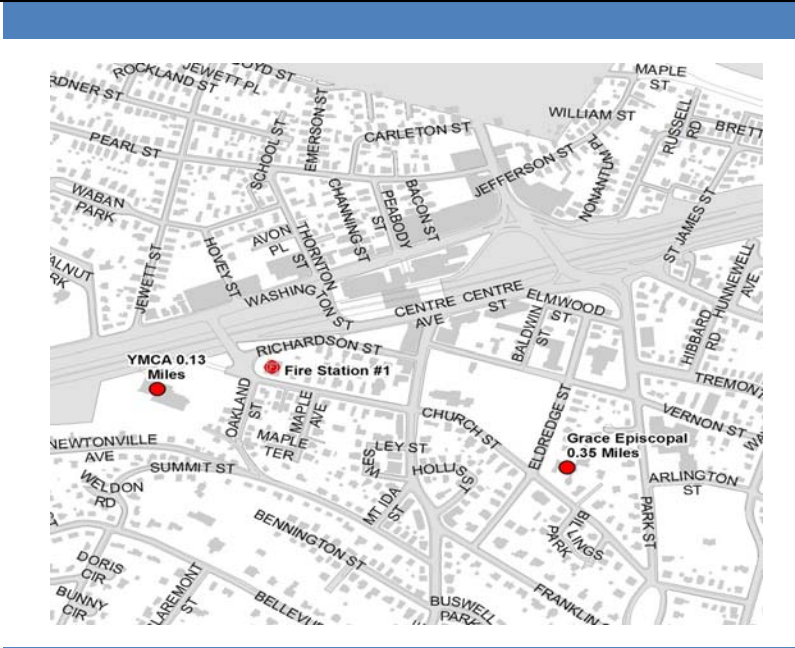
Other Locations

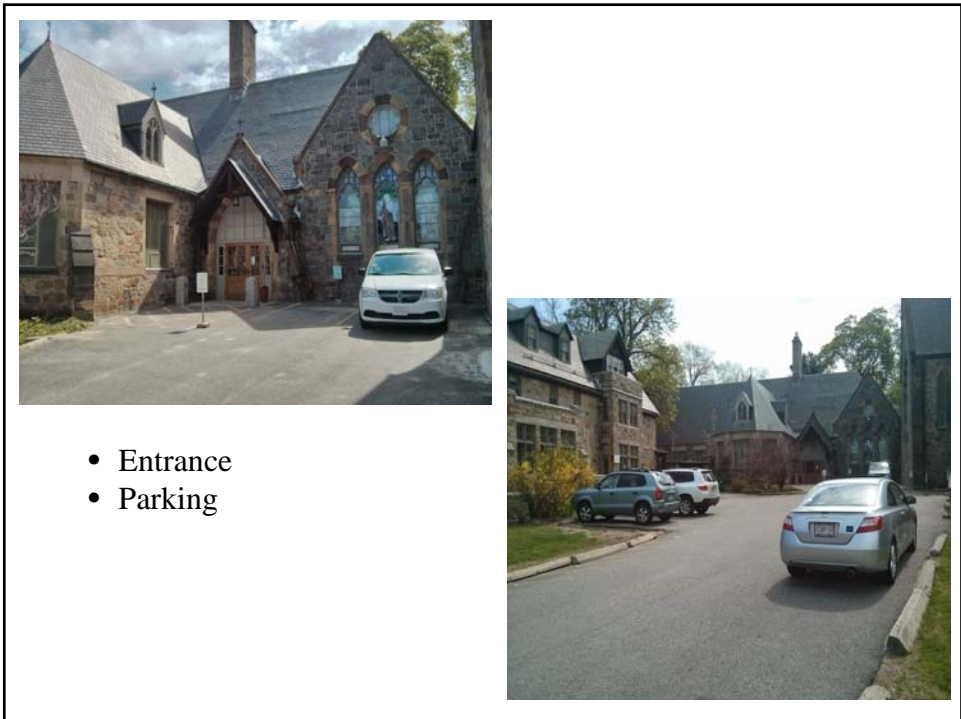
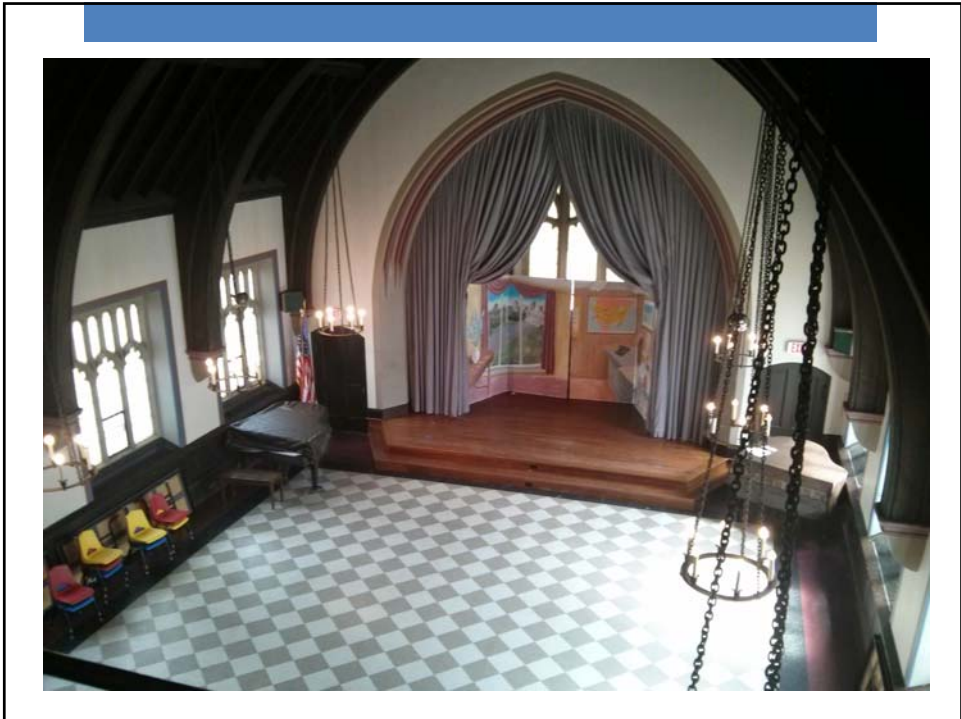
| Fire Station #1 | Availability | | | | | | | | |
|----------------------------------|--------------|--|--|--|--|--|--|--|--|
| Whole Foods | No | | | | | | | | |
| Lincoln Eliot | No Parking | | | | | | | | |
| Pelligrini Playground FH Parking | | | | | | | | | |
| YMCA | No | | | | | | | | |
| Evangelical Baptist Church | No | | | | | | | | |
| Eliot Church of Newton | No | | | | | | | | |
| Son of Italy | No | | | | | | | | |
| Grace Episcopal Church | Yes | | | | | | | | |

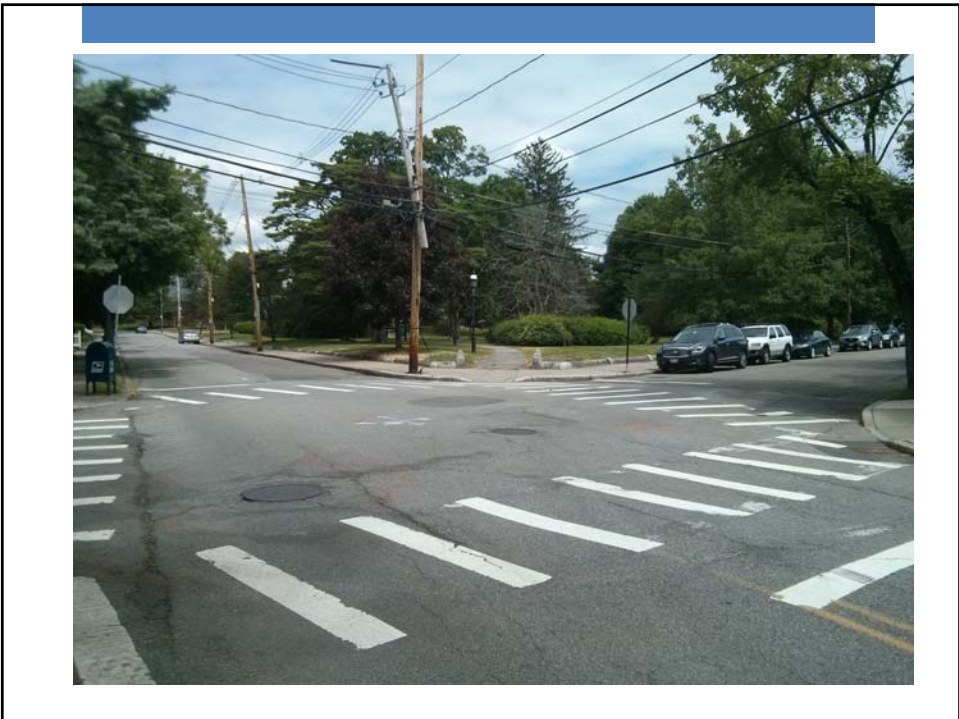
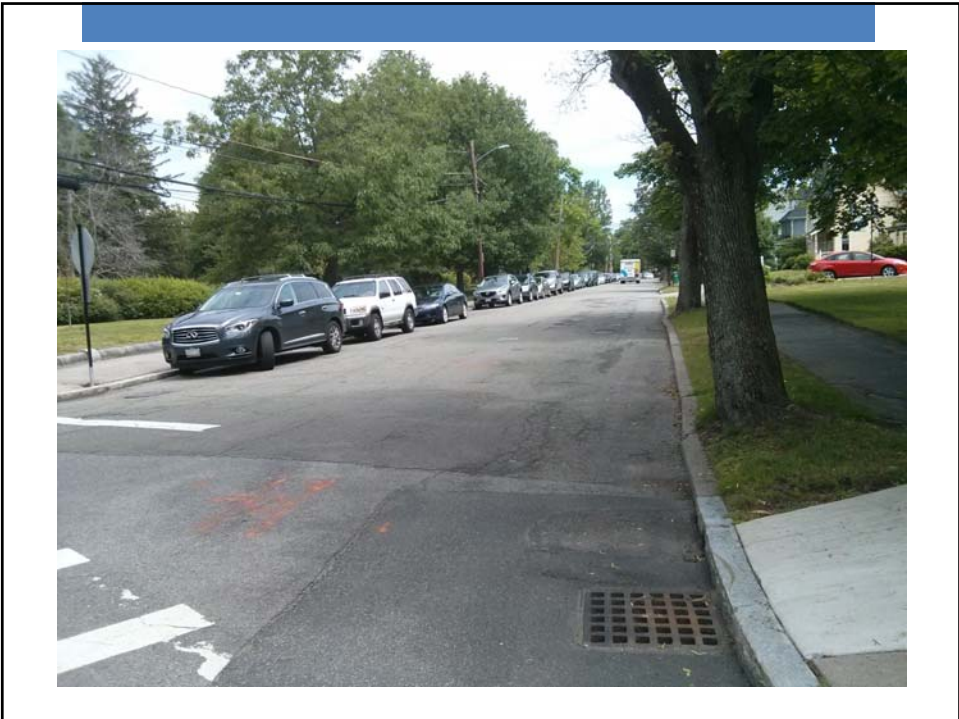
Proposed Solution

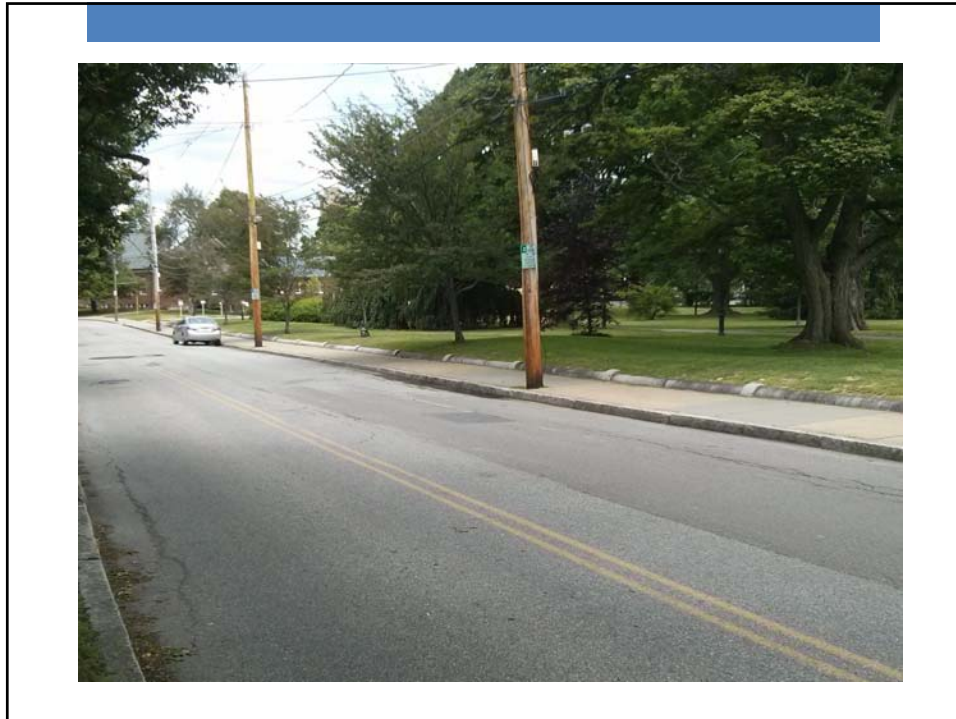


Grace Episcopal Church









Benefits

- Public Safety
 - Set up
 - Quality
 - Parking
-