

**Newton North High School  
Alderman Review**

10 January 2007

**learn.**



PART I

• **PROGRAM CHANGES**

PART II

• **SITE PLANS**

PART III

• **CURRENT BUILDING PLANS**

PART IV

• **THEATER OPTIONS**

PART V

• **SECTIONS / ELEVATIONS**

PART VI

• **MODEL PHOTOS**

PART VIII

• **VE LIST**

PART IX

• **ALTERNATE SITE SCHEMES**



- Reduced Main Street
- Smaller lobby at main entrance
- Relocation of athletic building basement (locker rooms etc)
  
- Changes in shared area of Main Office and Community Education
- Assignment of department offices and teacher areas
- Addition of Credit Union
  
- Addition to paper storage room
- Reduction of one expanded size classroom for Wellness to regular size
- Reduction in size of cooking lab and fashion/costume design lab
  
- Addition to Academic Support Centers
  
- Reduction to dance/wrestling room to create an enhanced weight room/fitness center
  
- Addition to elementary lunch prep area
- Removal of chair storage
  
- Addition of EDCO guidance counselor office



PART I

• **PROGRAM CHANGES**

PART II

• **SITE PLANS**

PART III

• **CURRENT BUILDING PLANS**

PART IV

• **THEATER OPTIONS**

PART V

• **SECTIONS / ELEVATIONS**

PART VI

• **MODEL PHOTOS**

PART VIII

• **VE LIST**

PART IX

• **ALTERNATE SITE SCHEMES**



# Newton North High School

Newtonville,  
Massachusetts

GENERAL NOTES:

GUND PARTNERSHIP INC.

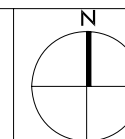


GUND PARTNERSHIP

ARCHITECTURE | PLANNING

47 THORNDIKE STREET  
CAMBRIDGE, MA 02141  
617 | 250 6800  
617 | 577 9614 FAX

CONSULTANT:



REVISIONS:

Progress Print

DATE: 10/12/16

SCALE: 1"=75'-0"

DRAWN BY: JHP/RLR

CHECKED BY: DMS

SHEET TITLE:  
OVERALL LAYOUT PLAN

SHEET NUMBER:

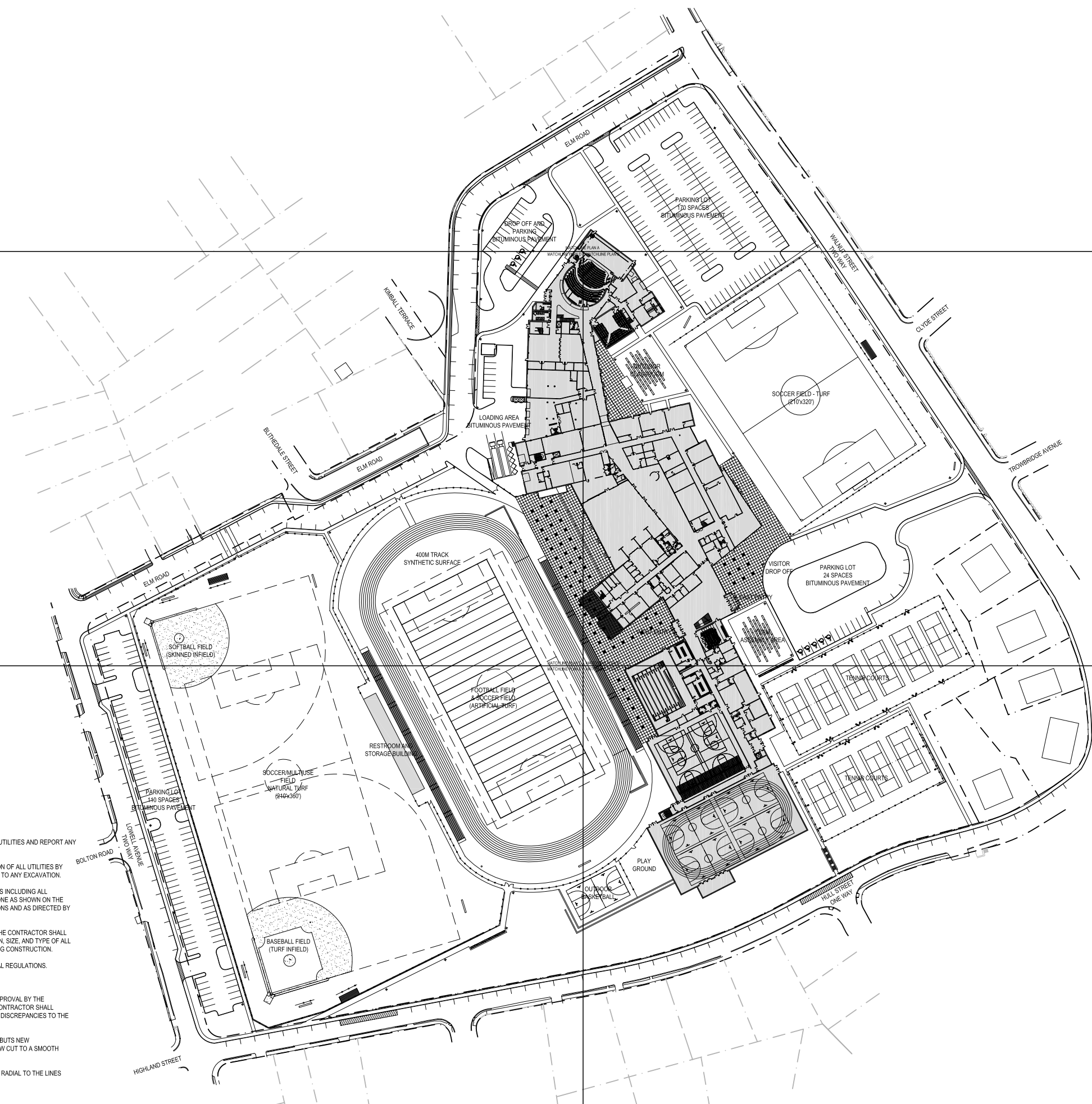
# L1.0

GENERAL NOTES

1. THE CONTRACTOR SHALL VERIFY ALL EXISTING CONDITIONS AND UTILITIES AND REPORT ANY DISCREPANCIES TO THE LANDSCAPE ARCHITECT.
2. IT IS THE CONTRACTORS RESPONSIBILITY TO VERIFY THE LOCATION OF ALL UTILITIES BY NOTIFYING DIG-SAFE AT 1-800-322-4844 AT LEAST 72 HOURS PRIOR TO ANY EXCAVATION.
3. THE CONTRACTOR SHALL CONDUCT PRELIMINARY INVESTIGATIONS INCLUDING ALL NECESSARY EXCAVATION TO DETERMINE IF THE WORK CAN BE DONE AS SHOWN ON THE PLANS. CHANGES MAY BE MADE AS REQUIRED BY FIELD CONDITIONS AND AS DIRECTED BY THE LANDSCAPE ARCHITECT.
4. ALL EXISTING UTILITIES MAY NOT BE SHOWN ON THE DRAWING. THE CONTRACTOR SHALL ASSUME RESPONSIBILITY FOR DETERMINING THE EXACT LOCATION, SIZE, AND TYPE OF ALL UNDERGROUND UTILITIES AND FOR PROTECTING ALL LINES DURING CONSTRUCTION.
5. ALL WORK SHALL COMPLY WITH ALL APPLICABLE STATE AND LOCAL REGULATIONS.

LAYOUT NOTES

1. ALL PAVEMENTS SHALL BE STAKED BY THE CONTRACTOR FOR APPROVAL BY THE LANDSCAPE ARCHITECT BEFORE CONSTRUCTION BEGINS. THE CONTRACTOR SHALL VERIFY THE LAYOUT OF ALL OTHER SITE ELEMENTS AND REPORT DISCREPANCIES TO THE LANDSCAPE ARCHITECT.
2. AT ALL LOCATIONS WHERE ROADWAY OR SIDEWALK PAVEMENT ABUTS NEW CONSTRUCTION, THE EDGE OF EXISTING PAVEMENT SHALL BE SAW CUT TO A SMOOTH EDGE.
3. ALL LINES AND DIMENSIONS ARE PARALLEL, PERPENDICULAR, OR RADIAL TO THE LINES FROM WHICH THEY ARE MEASURED.
4. ALL DIMENSIONS ARE IN FEET AND TENTHS AND INCHES.



PART I

• **PROGRAM CHANGES**

PART II

• **SITE PLANS**

PART III

• **CURRENT BUILDING PLANS**

PART IV

• **THEATER OPTIONS**

PART V

• **SECTIONS / ELEVATIONS**

PART VI

• **MODEL PHOTOS**

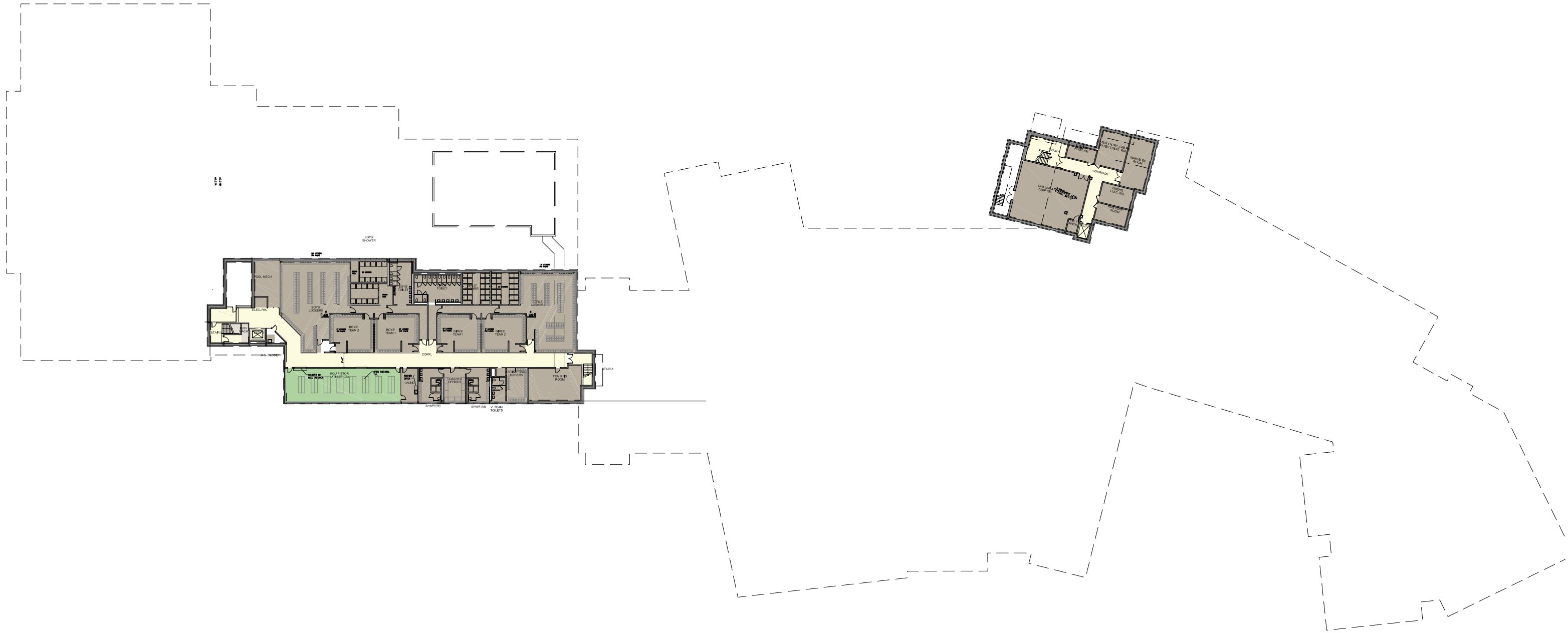
PART VIII

• **VE LIST**

PART IX

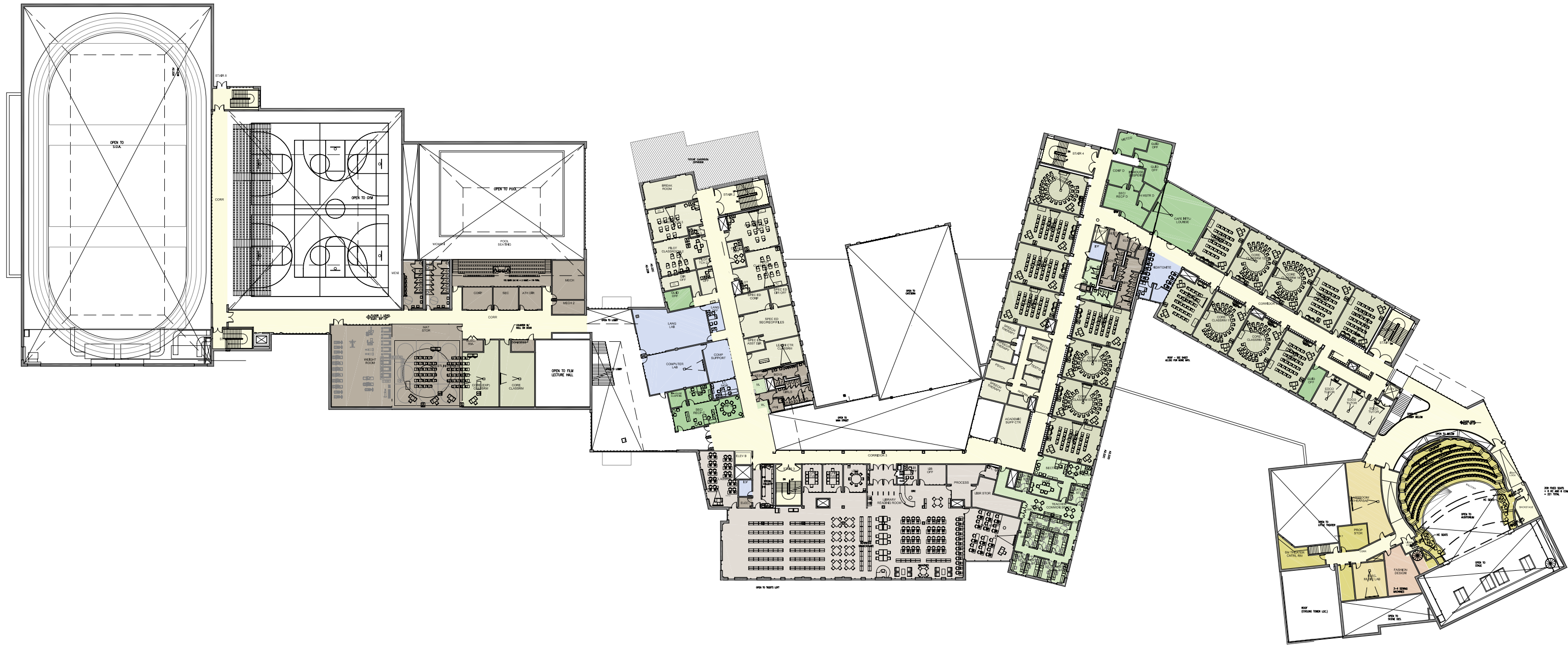
• **ALTERNATE SITE SCHEMES**











Newton North High School

**SECOND LEVEL PLAN**  
10 January 2007









PART I

• **PROGRAM CHANGES**

PART II

• **SITE PLANS**

PART III

• **CURRENT BUILDING PLANS**

PART IV

• **THEATER OPTIONS**

PART V

• **SECTIONS / ELEVATIONS**

PART VI

• **MODEL PHOTOS**

PART VIII

• **VE LIST**

PART IX

• **ALTERNATE SITE SCHEMES**





