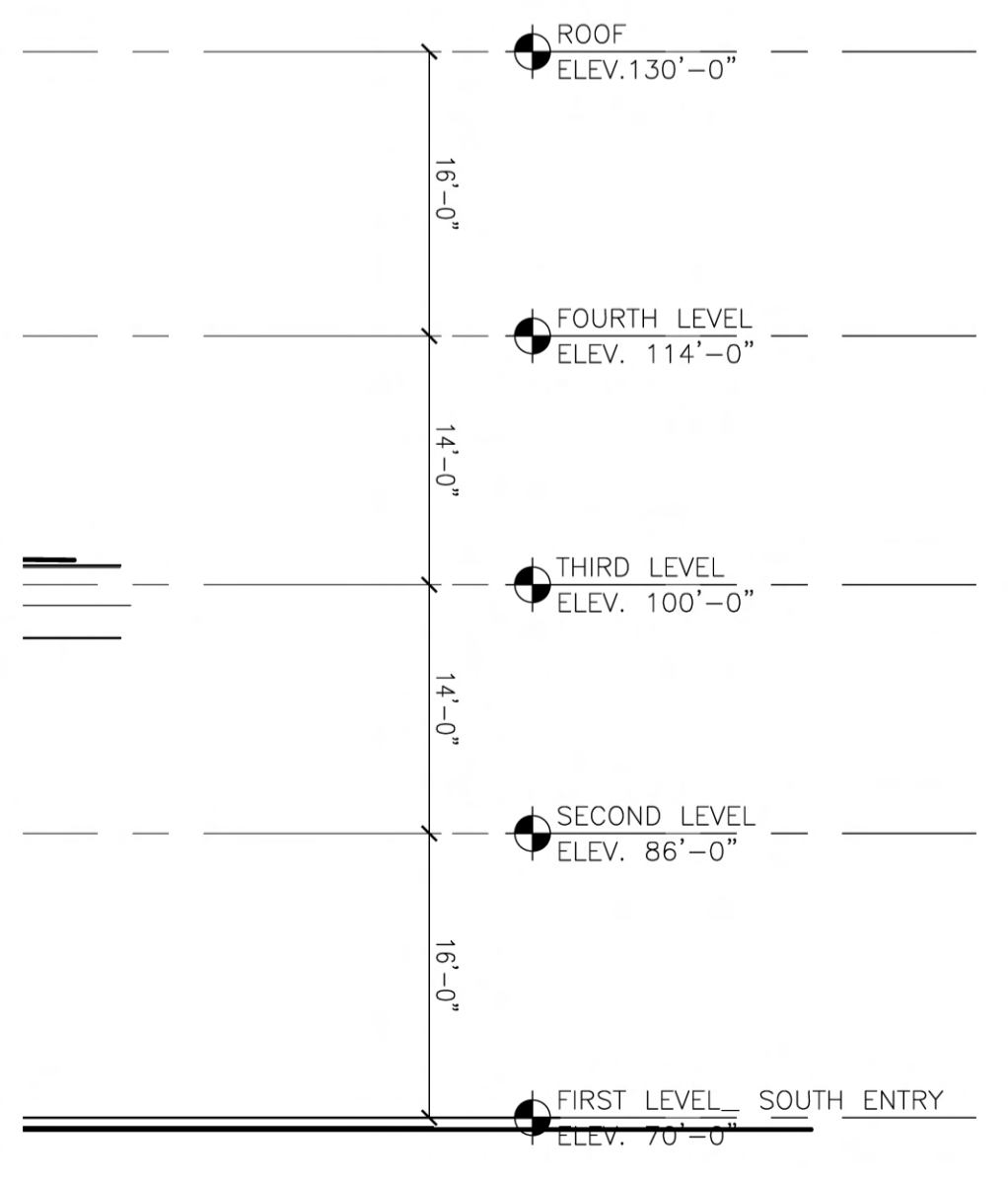
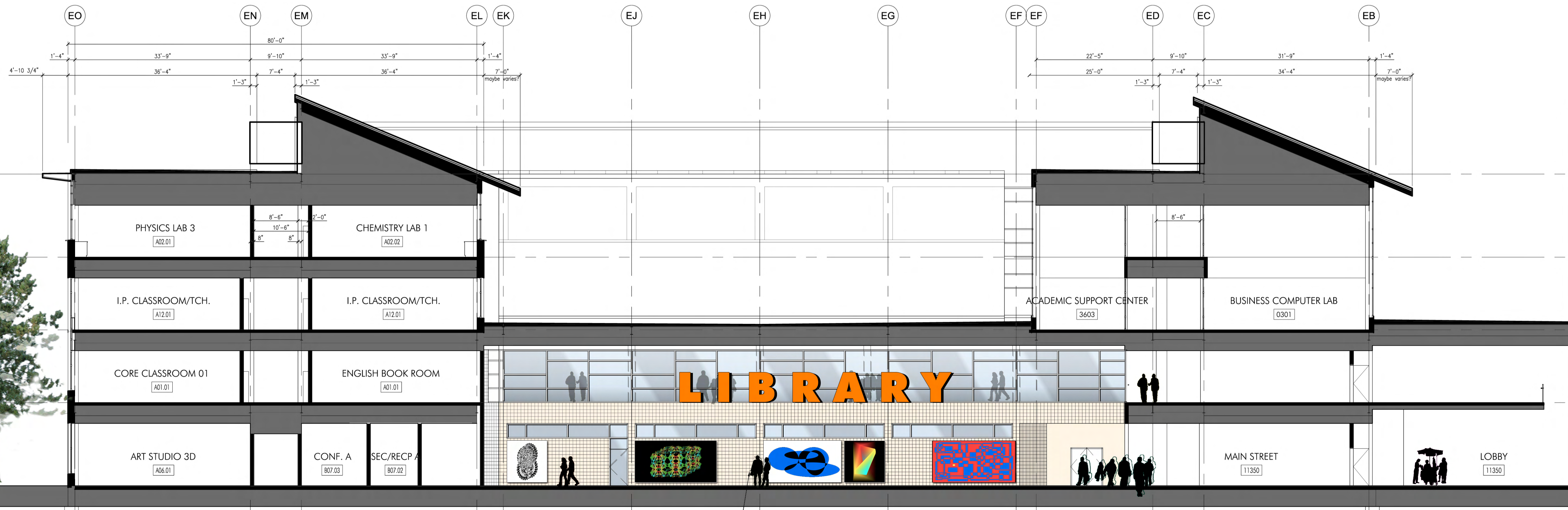
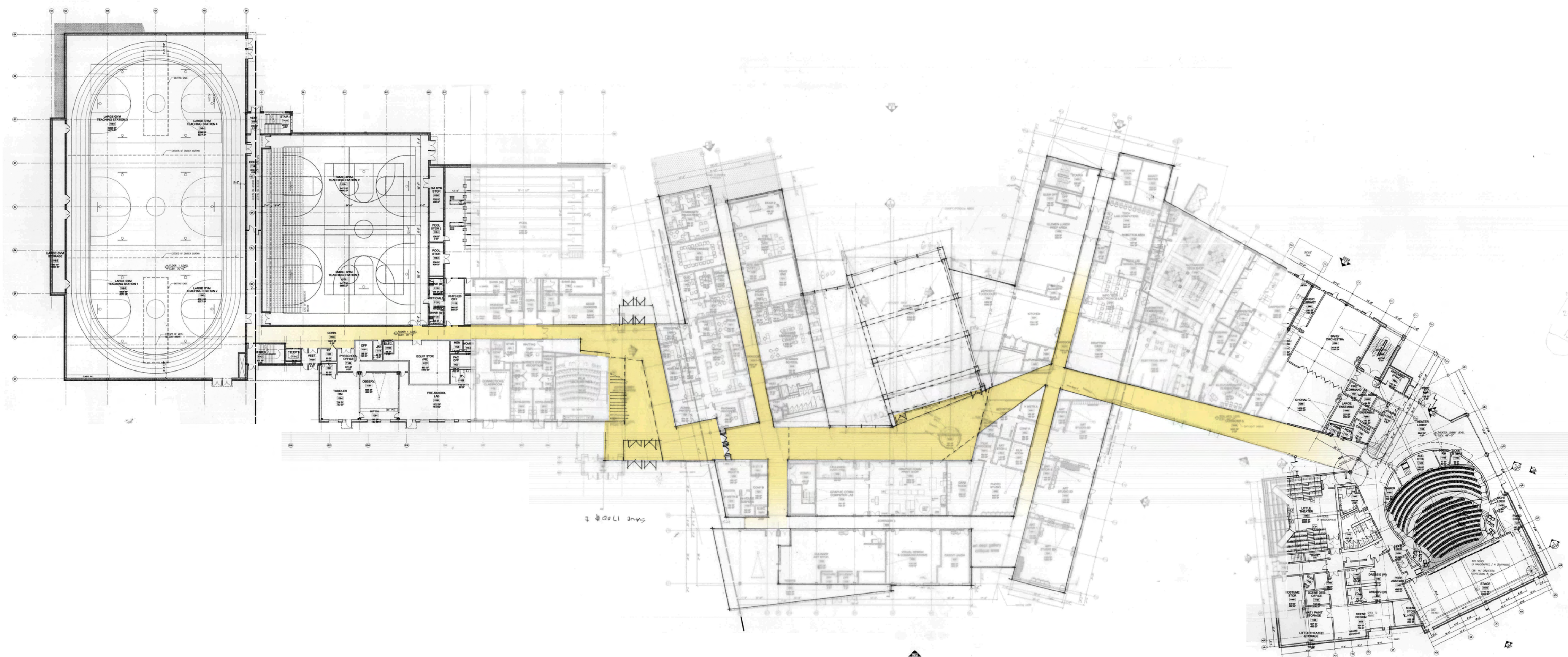
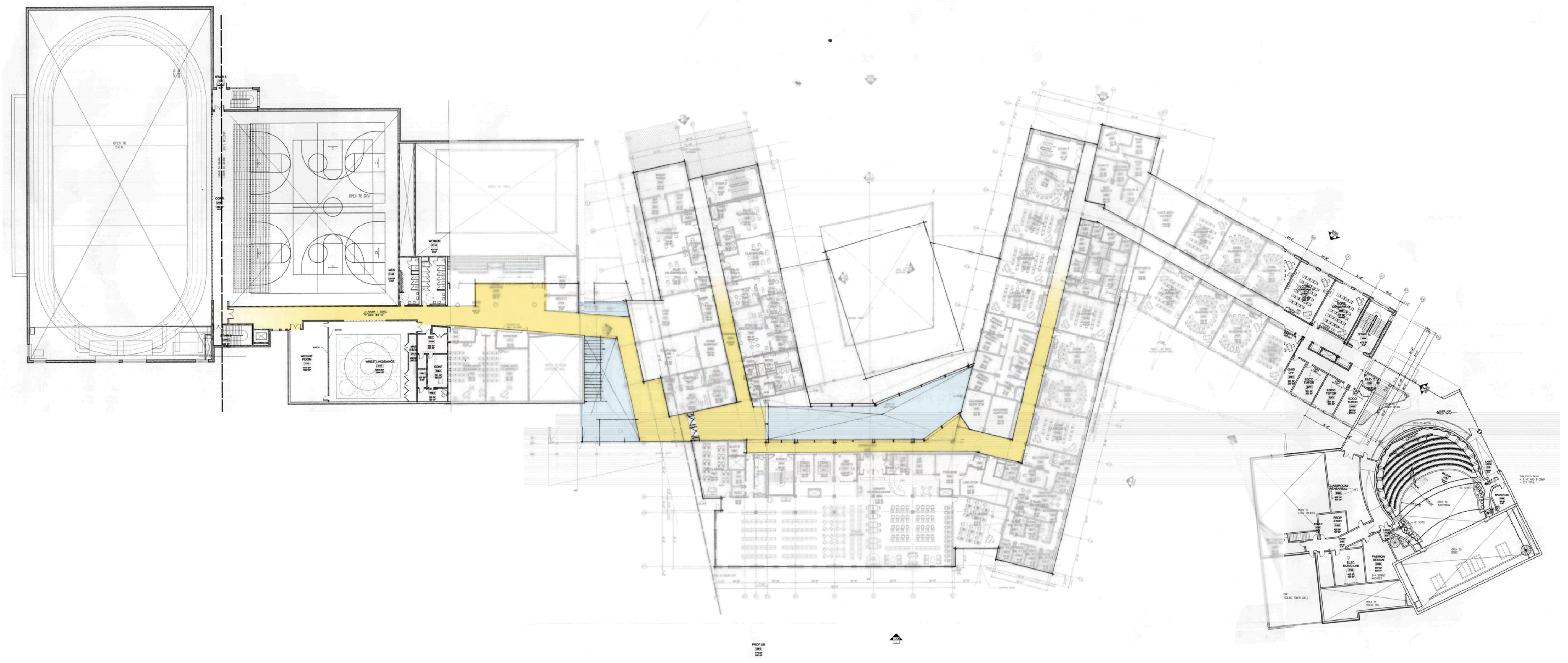


INFORMATION STAND



MAIN STREET LOOKING TOWARDS LIBRARY

CONCRETE BLOCKING



NEWTON NORTH HIGH SCHOOL
NEWTONVILLE, MASSACHUSETTS

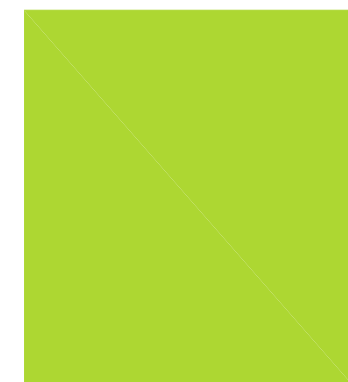
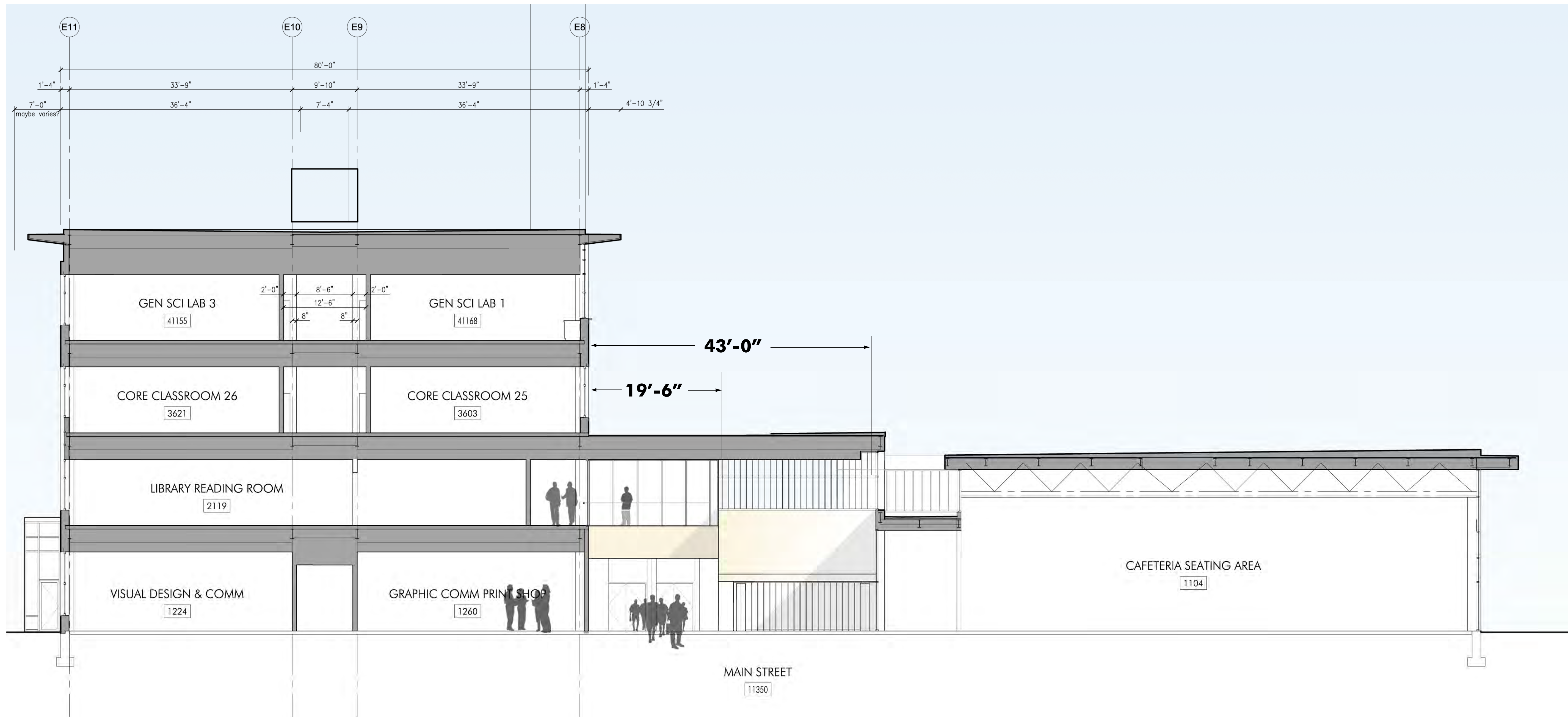
REDUCED MAIN STREET

29 NOVEMBER 2006



GUND PARTNERSHIP

ARCHITECTURE | PLANNING
CAMBRIDGE, MA



NEWTON NORTH HIGH SCHOOL
 NEWTONVILLE, MASSACHUSETTS

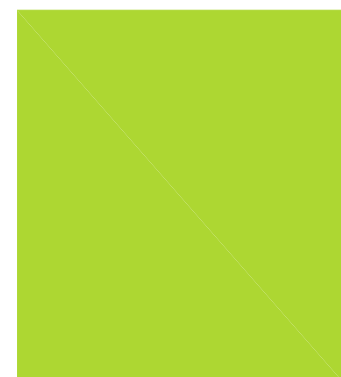
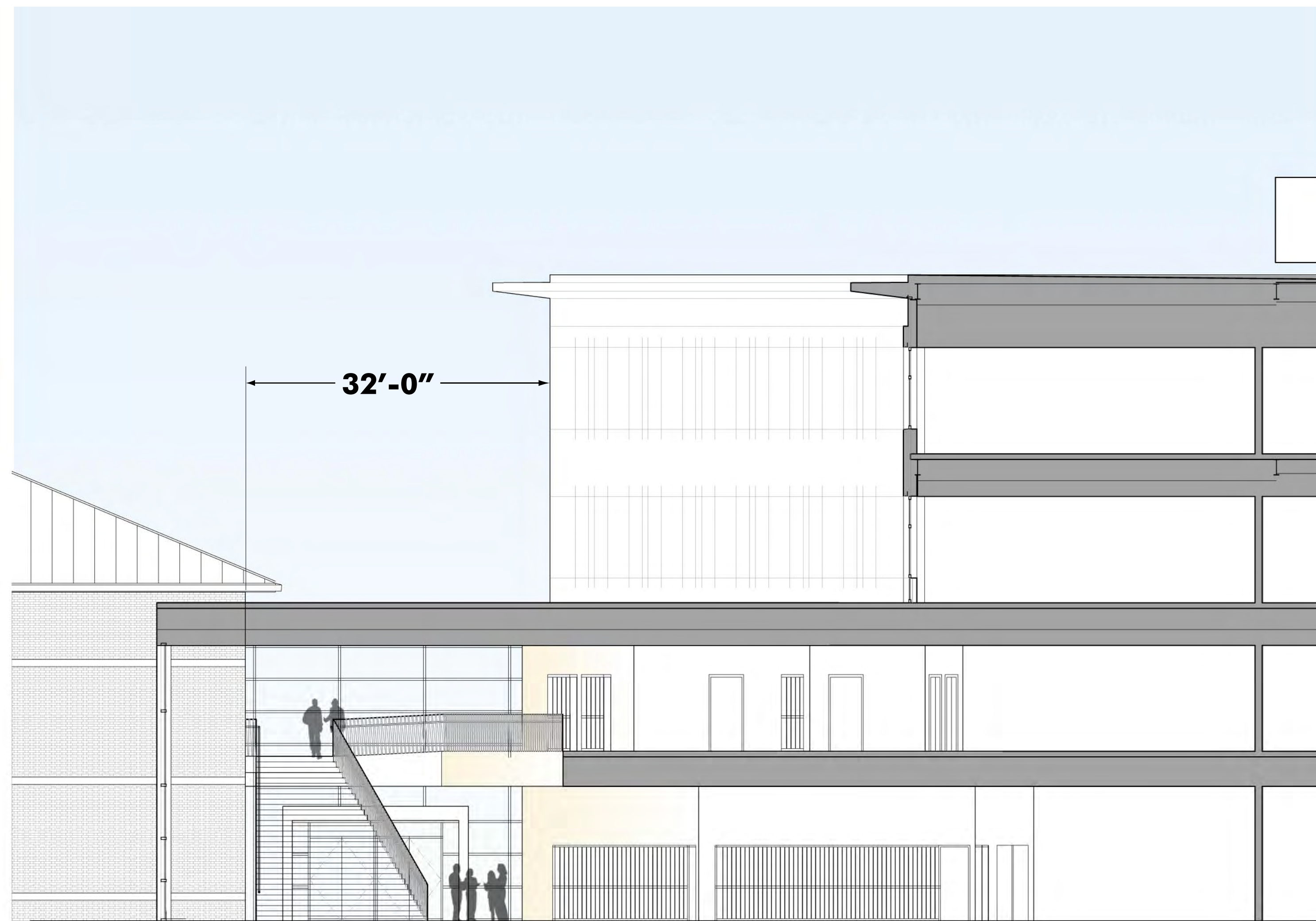
SECTION - MAIN STREET

14 DECEMBER 2006



GUND PARTNERSHIP

ARCHITECTURE | PLANNING
 CAMBRIDGE, MA



NEWTON NORTH HIGH SCHOOL
NEWTONVILLE, MASSACHUSETTS

SECTION - LOBBY

14 DECEMBER 2006



GUNDPARTNERSHIP

ARCHITECTURE | PLANNING
CAMBRIDGE, MA

PART I

• **PROGRAM CHANGES**

PART II

• **SITE PLANS**

PART III

• **CURRENT BUILDING PLANS**

PART IV

• **THEATER OPTIONS**

PART V

• **SECTIONS / ELEVATIONS**

PART VI

• **MODEL PHOTOS**

PART VIII

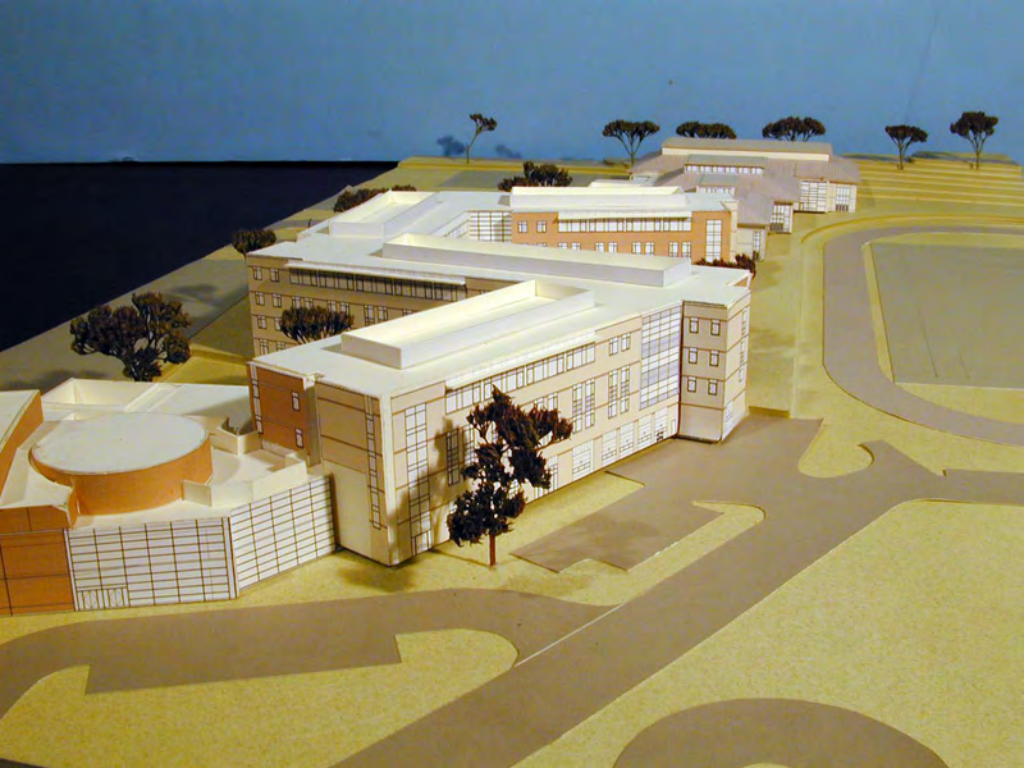
• **VE LIST**

PART IX

• **ALTERNATE SITE SCHEMES**











Some Suggested VE Modifications			
Newton North High School		09-Nov-06	
Description		Price	Decision Due
1	Building Element Changes		
2	Revise sloped roof at Academic wing to flat roof. Extend roof screens to complete enclosures at equipment area and include intermittent cornices. (See sketches)	-339,000	
3	Revise monitors on athletic wing to flat roof with skylights (assume 5000 sf of skylight spread over three venues)	-493,000	
4	Revise sloped roofs on athletic wing to flat roof with skylights (assume 5000 sf of skylight spread over three venues)	-248,000	
5	Eliminate skylights at athletic wing (if monitor deletion accepted above)	-325,000	
6	Change all flat roof materials to EPDM	-256,000	
7	Revise curtain wall to a combination of windows and metal panels (e.g. Centria System)	-297,000	
8	Eliminate internal or roof AC from classrooms, add wall units only	-1,539,000	
9	Brick veneer to exterior walls (spec reduced to minimal rate)	-1,441,000	
10	Double slab for acoustical isolation over Music and CTE areas instead of sound isolation GWB clg const	-25,000	
11	Replace remaining CMU with impact resistant GWB – Including locker rooms .	-559,000	
12	Reduce height of Academic wing by 2' 8"	-400,000	
13			
14	Changes in Areas		
15	Reduce lobby by 2000 sf	-500,000	
16	Correction for SOA 1158 sf increase at 240/sf	325,074	
17			
18	Theater		
19	Reduction in overall theater equipment reducing the total by 20% of \$1.2M = \$240,000	-296,000	
20	Use rolled sections for Gym trusses	-16,000	
21	Eliminate concrete topping at theater and Little theater roofs	-25,000	
22	Eliminate skylight at CTE corridor	-160,000	
23	Reduce interior glazing by 25%	-150,000	
24	Eliminate GWB soffits at admin area	-35,000	
25	Reduce lighting allowance 5%	-180,000	
26			
27	Floors, Finishes, and Fittings		
28	Resilient floor to main lobby vestibules, 12" x 12" (replaces porcelain and base)	-14,000	
29	Resilient floor to main lobbies/corridors, 12" x 12" (replaces porcelain and base)	-389,000	
30	Resilient floor to theater main lobby, 12" x 12" (replaces porcelain and base)	-124,000	
31	Replace VCT to all lobbies above with stained concrete	-44,000	
32	Stained concrete floor to 1st floor athletic corridor (replaces porcelain and base)	-22,000	
33	Replace all remaining VCT with stained concrete	-334,000	
34	Athletic Locker & Shower Accessories: Metal lockers (spec reduction as per Team)	-123,000	
35	Metal lockers to classroom/public corridors (spec reduction as per Team)	-235,000	
36	Admin/Faculty appliances and eqpt allowance	-62,000	
37	Eliminate sprung floor at music	-93,000	
38	Delete carpet at theater	-35,000	
39	Delete carpet at Library, Faculty areas, Administration areas	-99,000	
40			
41	Site Development Reductions		
42	Granite curb changed to concrete throughout	-90,000	
43	Outdoor Basketball Court	-36,000	
44	Revise grandstand to alum. on point foundations	-100,000	
45			
46	Total ECC	-8,758,926	
47	Note: All bold items need to be verified by RHLB		



PART I

• **PROGRAM CHANGES**

PART II

• **SITE PLANS**

PART III

• **CURRENT BUILDING PLANS**

PART IV

• **THEATER OPTIONS**

PART V

• **SECTIONS / ELEVATIONS**

PART VI

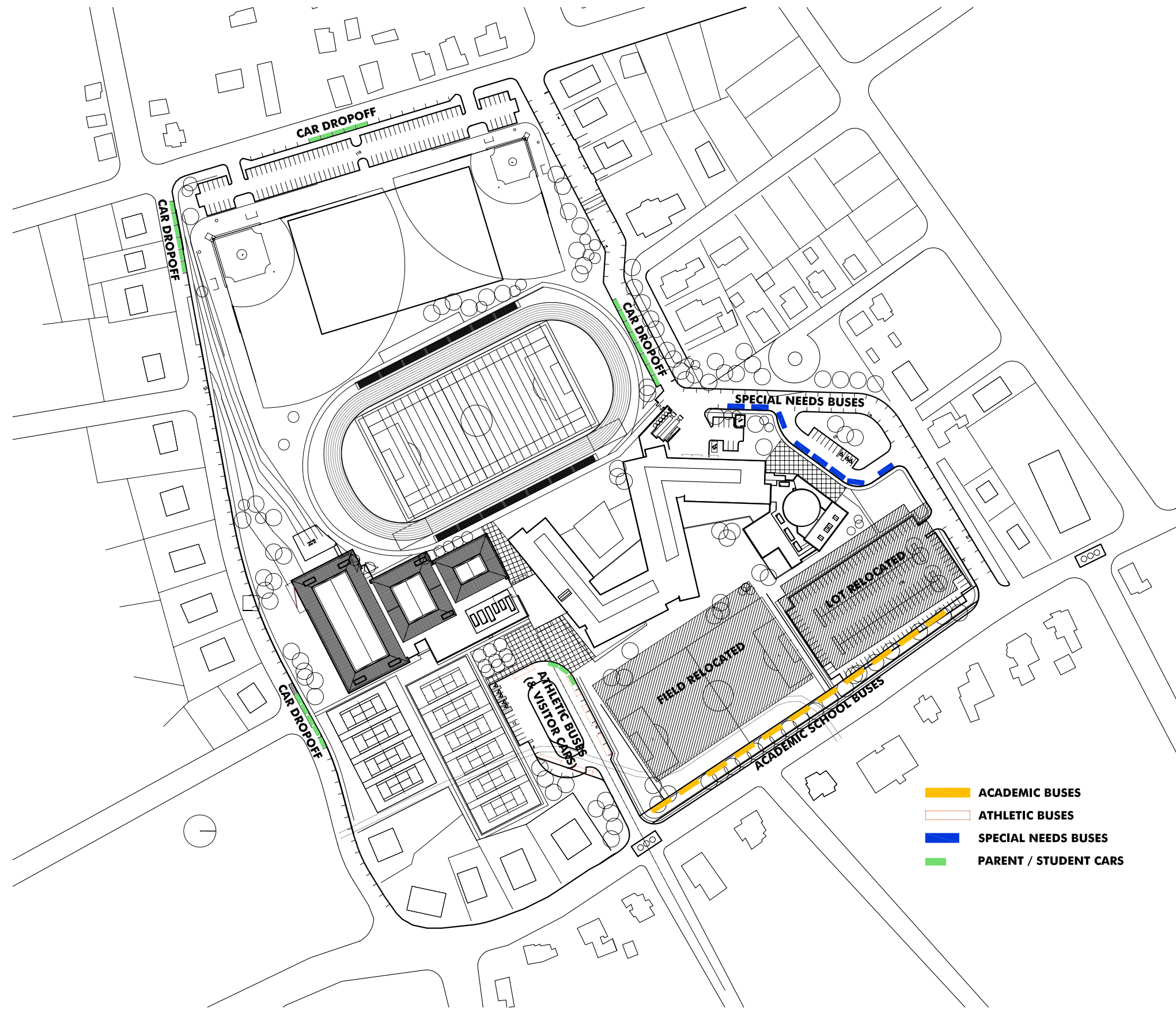
• **MODEL PHOTOS**

PART VIII

• **VE LIST**

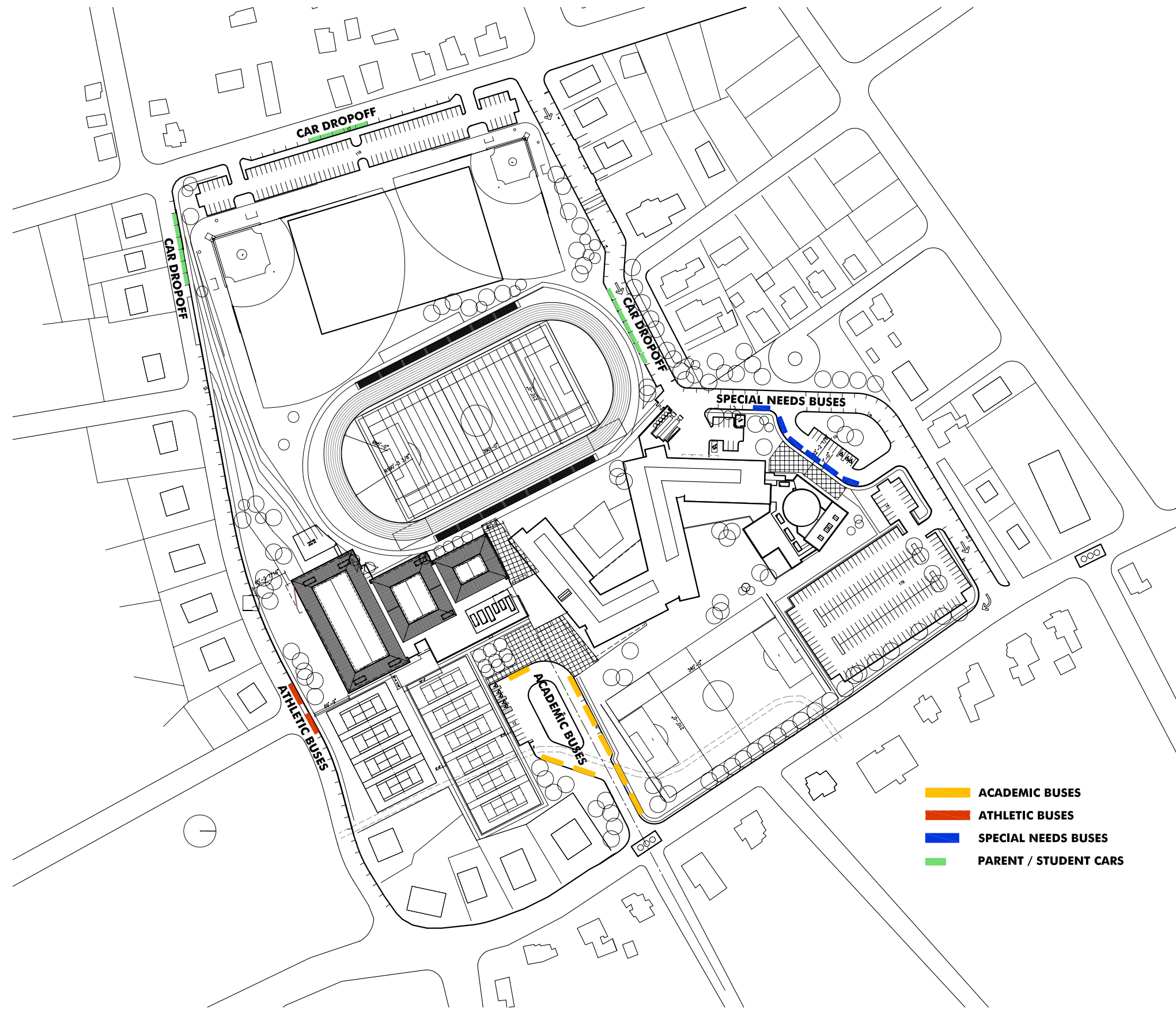
PART IX

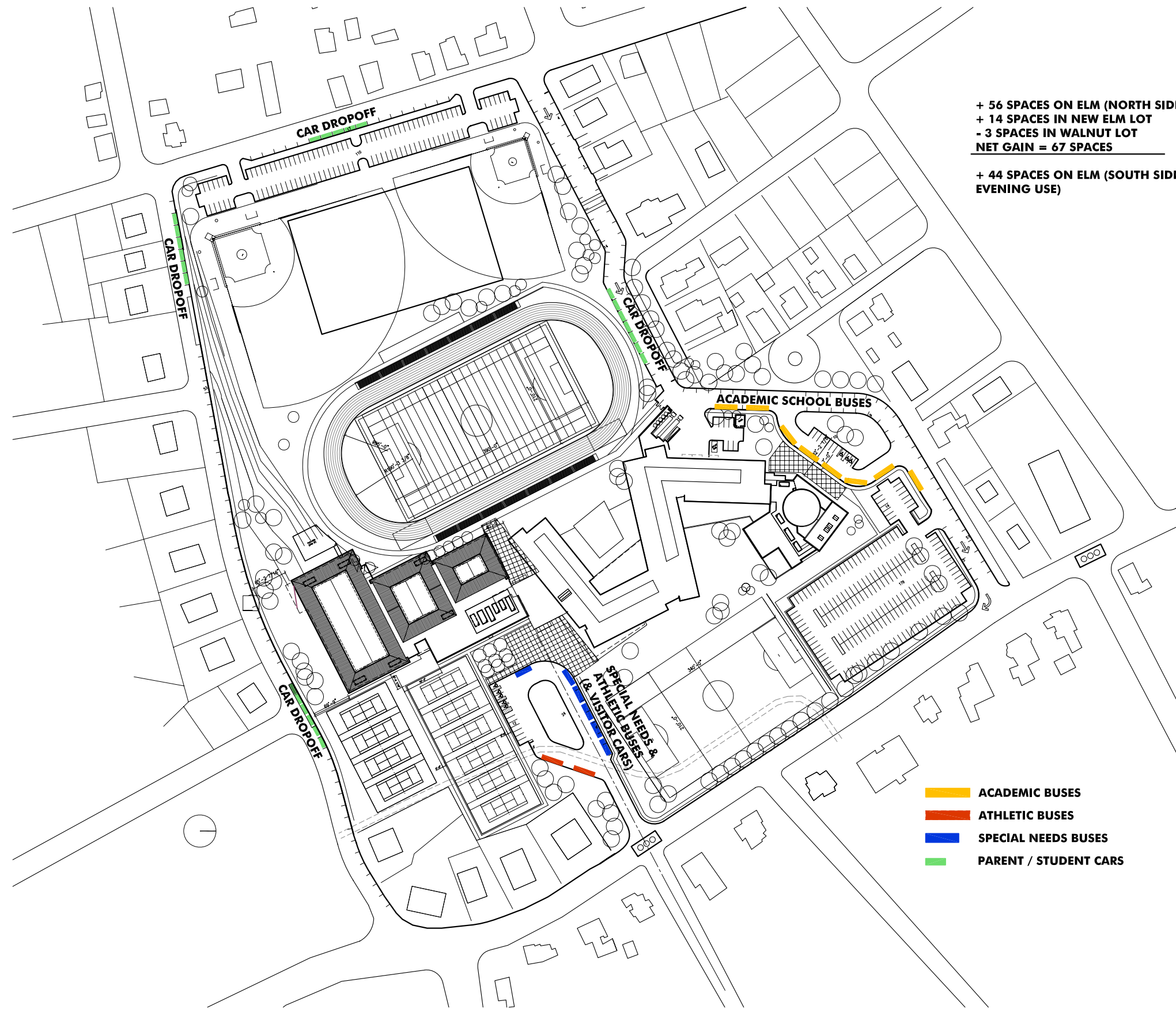
• **ALTERNATE SITE SCHEMES**



- ACADEMIC BUSES
- ATHLETIC BUSES
- SPECIAL NEEDS BUSES
- PARENT / STUDENT CARS







+ 56 SPACES ON ELM (NORTH SIDE)
 + 14 SPACES IN NEW ELM LOT
 - 3 SPACES IN WALNUT LOT
NET GAIN = 67 SPACES

+ 44 SPACES ON ELM (SOUTH SIDE EVENING USE)

- ACADEMIC BUSES
- ATHLETIC BUSES
- SPECIAL NEEDS BUSES
- PARENT / STUDENT CARS

