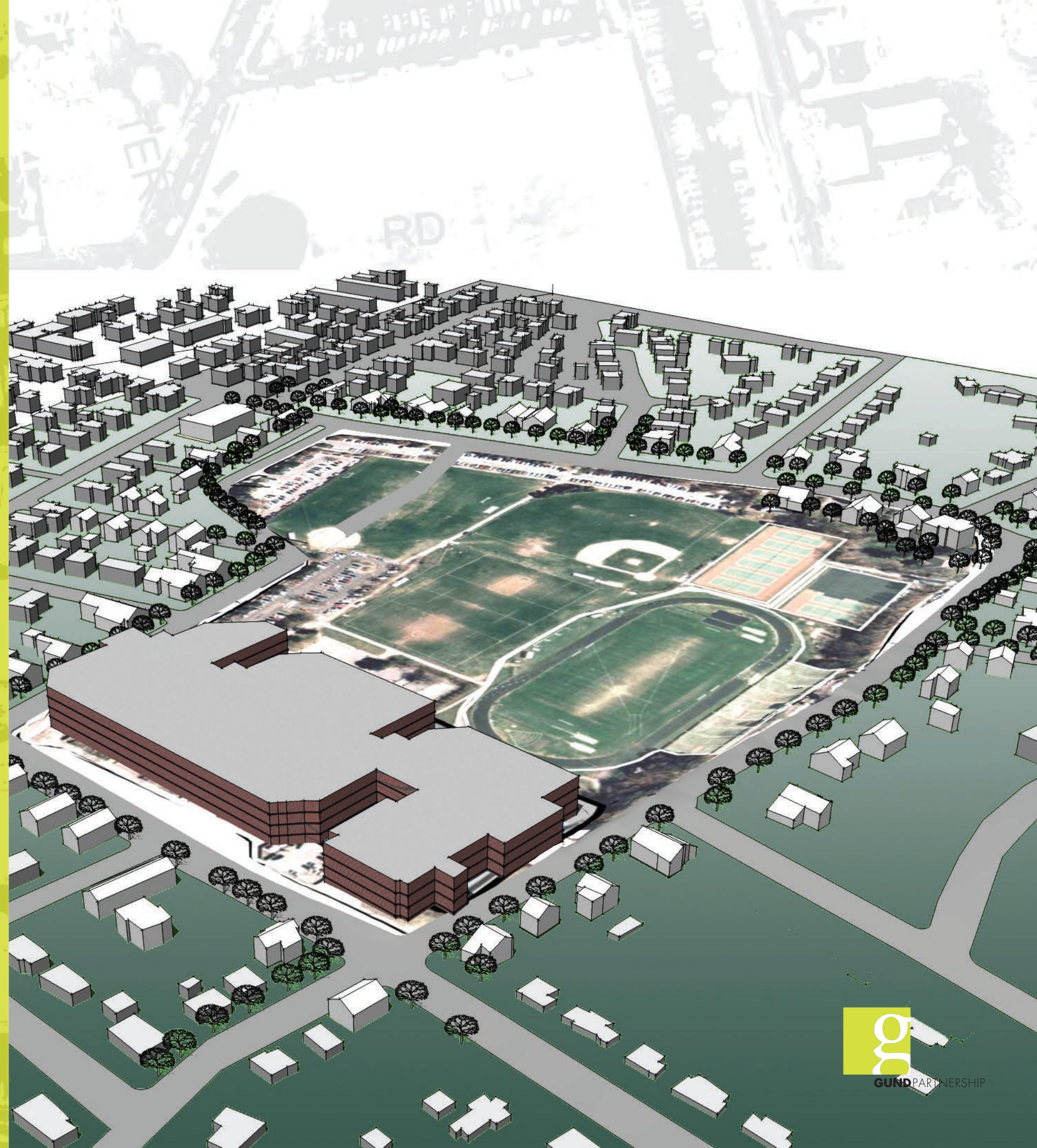


# Newton North High School Alderman Site Plan Review

June 6, 2006

learn.

**NEWTON NORTH HIGH SCHOOL**  
Newton, Massachusetts





PART I

• **SITE OVERVIEW**

PART II

• **CURRENT DRC SITE PLAN  
APPROVAL SET**

PART III

• **SUSTAINABILITY  
INFORMATION**

PART IV

• **PARKING / TRAFFIC  
INFORMATION**



Newton North High School  
Newton, Massachusetts

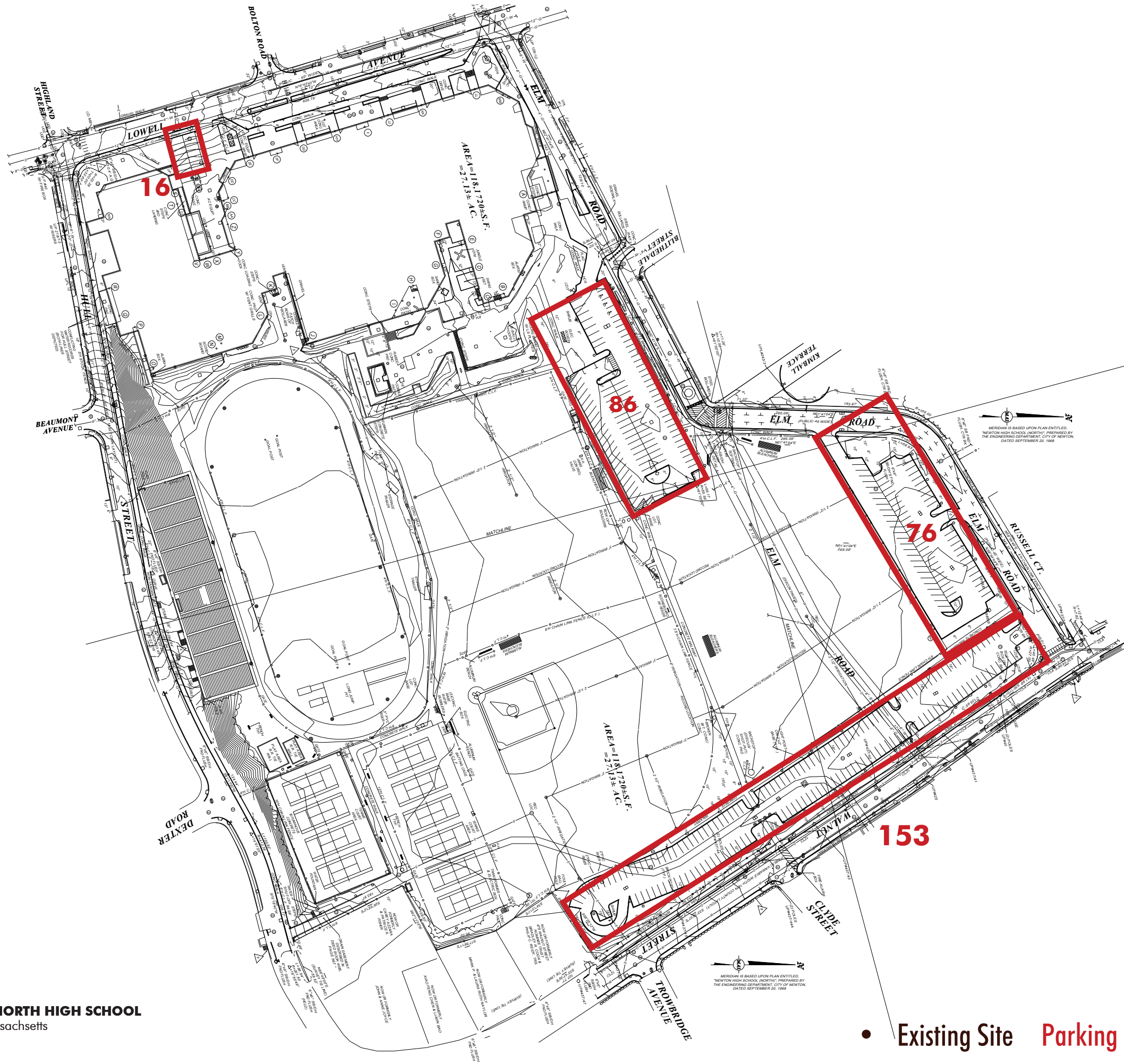
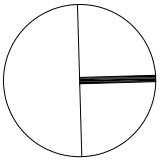
## Existing Site



GUND PARTNERSHIP

ARCHITECTURE | PLANNING  
CAMBRIDGE, MA





• Total Spaces on Site : 331

MERIDIAN IS BASED UPON PLAN ENTITLED "NEWTON HIGH SCHOOL, NORTH", PREPARED BY THE ENGINEERING DEPARTMENT, CITY OF NEWTON, DATED SEPTEMBER 20, 1988

MERIDIAN IS BASED UPON PLAN ENTITLED "NEWTON HIGH SCHOOL, NORTH", PREPARED BY THE ENGINEERING DEPARTMENT, CITY OF NEWTON, DATED SEPTEMBER 20, 1988

• Existing Site    Parking On Site



**NEWTON NORTH HIGH SCHOOL**  
Newton, Massachusetts



GUND PARTNERSHIP

- Single Family Residential
- Multi Family Residential
- Commercial
- Open Space
- Public Housing
- Vacant Land
- Non Profit
- Industrial
- Mixed Use



- History
- Landscape Typology
- Transportation/  
Street Hierarchy
- **Land Use**
- Historical District
- Amenities

Mix of multi-family and single-family residential properties around the site.

Little vacant land available in vicinity.