

CITY OF NEWTON

IN CITY COUNCIL

TRAFFIC COUNCIL REPORT

THURSDAY, DECEMBER 15, 2016

Present: David Koses, Traffic Council Chair; Sgt. Jay Babcock, Newton Police Department; Alicia Wilson, Resident member, Stephen Simoglou, Traffic Engineer and Councilor Ciccone

TC35-16 COUNCILORS SANGIOLO, HARNEY AND GENTILE, requesting parking restrictions on a) Maple Street from Woodland Road to Auburn Street; b) Central Street from Commonwealth Avenue to Grove Street; c) Auburn Street from Commonwealth Avenue to Grove Street to alleviate increased parking due to construction at Lasell College and discontinued use of the Lasell parking lots as temporary modular classrooms have been located on the parking lots. (Ward 4) [08/22/16 @ 2:47 PM]

TC35-16(1) HELD (3-2, Babcock and Ciccone opposed) on 11/7/16. Held pending draft Traffic and Parking Regulation (TPR) language to approve the following: Central Street between Grove Street and Maple Street to be added into the Auburndale Village Parking District with the following regulations: (a) No parking, any time, south side; (b) Auburndale Permit Only, north side, all days, all times (Permits are only to be available to residents living within the Auburndale Village Parking District).

TC35-16(2) HELD (5-0) on 11/17/16. Held pending draft Traffic and Parking Regulation (TPR) language to approve the following: Central Street between Maple Street and Commonwealth Avenue to be added into the Auburndale Village Parking District with the following regulations: (a) No parking, any time, south side; (b) 1 Hour Limit, north side, M-F 9AM-5PM Except by Auburndale Permit (Permits are only to be available to residents living within the Auburndale Village Parking District).

TC35-16(3) HELD (3-2, Babcock and Ciccone opposed) on 11/17/16. Held pending draft Traffic and Parking Regulation (TPR) language to approve the following: Maple Street between Auburn Street and Central Street to be added into the Auburndale Village Parking District with the following regulations: (a) No parking, any time, west side; (b) 1 Hour Limit, M-F 9AM-5PM Except by Auburndale Permit (Permits are only to be available to residents living within the Auburndale Village Parking District).

TC35-16(4) HELD (4-0-1, Freedman abstained) on 11/17/16. Held pending draft Traffic and Parking Regulation (TPR) language to approve the following: Maple Street between Central Street and Berkeley Place will NOT be added into the Auburndale Village Parking District. The following parking regulations will apply to this block of Maple Street: (a) No parking, any time, west side; (b) No parking, 9:00 a.m. to 5:00 p.m., east side.

TC35-16(5) HELD (5-0) on 11/17/16. Held pending draft Traffic and Parking Regulation (TPR) language to approve the following: Maple Street between Berkeley Place and Woodland Road will NOT be added into the Auburndale Village Parking District. The following parking regulations apply to this section of Maple Street: (a) No parking, any time, west side. Note: there will be no parking restrictions on the west side of this section of Maple Street. Parking within up to 50 feet of the intersections of Woodland Road, Groveland Street and/or Berkeley Place may be restricted, based on the judgment of the Traffic Engineer.

ACTION: HELD 3-1-1, Koses opposed, Simoglou abstaining. Held pending modification to Traffic and Parking Regulation (TPR) #272, to restrict parking on the north side of Central Street from Maple Street easterly, so as to match the currently-posted “no parking” signage.

NOTE: Council members were provided with location maps, site photos, street characteristics, parking observations and the current posted parking regulations.

Mr. Koses provided Council members with a brief review of actions taken on November 15, 2016.

Mr. Koses stated that Maple Street, Central Street and Auburn Street abut the Auburndale Village Parking District but that these streets are not currently included in the Parking District. Mr. Koses briefly explained the process for obtaining parking permits. He stated that the resident would visit the Traffic Bureau, pay the annual registration fee of \$25 per vehicle, and provide proof of residency. They may obtain one permit per vehicle and two free visitor passes per household.

Mr. Koses opened the discussion to members of the public who were present. Central Street residents expressed their concerns.

Concerns: Some residents stated that it is important to allow parking in front of homes for residents, contractors and guests. Commuters should be encouraged to use commuter parking lots, and not to rely on public streets. Vehicles have the tendency to block driveways, only enough room for one vehicle to pass and it is difficult to exit driveways.

Sgt. Babcock stated that public safety is the first priority. It is necessary to restrict parking to allow for emergency vehicle access without difficulties. He then said that he was opposed to TC35-16(1) action *Central Street between Grove Street and Maple Street* (a) No parking, any time, south side; (b) Auburndale Permit Only, north side, all days, all times. Because he prefers to eliminate all parking. Mr. Koses said that a compromise occurred to provide for some level of parking.

Sgt. Babcock noted an error in the draft Traffic and Parking Regulation (TPR) and said that there should be no parking allowed at the bend of Central Street to Maple Street. Mr. Koses said that the City Traffic Engineer could restrict parking administratively up to 50 feet of the intersection based on engineering judgment. Sgt. Babcock stated that his concern addressed parking restrictions longer than 50 feet but did not have measurements available.

Without further discussion, Councilor Ciccone made a motion to hold this item pending an accurate measurement of Central Street. Council members agreed 3-1-1, Mr. Koses opposed, Mr. Simoglou abstaining.

TC18-15 NICOLE VAIANI, 15 Cypress Street, requesting replacement of all 12-hour meters to short-term meters (3-hour, 6-hour or 8-hour meters) to deter commuters and to accommodate Newton Centre patrons and businesses. (Ward 6) [04/03/15 @ 2:14 PM] HELD 4-0 on 04/14/16. Hold for sixty-day trial. Convert ten meters numbered #24 through #33 from 12-hour meters to 6-hour meters in the Cypress Street lot.

ACTION: HELD 5-0. Held pending draft Traffic and Parking Regulation (TPR) language to approve the following distribution of parking meters in the Cypress Street Parking

Lot: 28 twelve-hour meters, 10 six-hour meters; 20 three-hour meters; 2 accessible parking spaces.

NOTE: Council members were provided with a location map, site photos and the distribution of parking spaces in the Cypress Street parking lot prior to April and in December 2016. Mr. Koses provided Council members with a brief review of the trial converting ten 12-hour meters to 6-hour meters in the Cypress Street lot to allow parking for businesses.

Mr. Koses said that two emails were received, on file. One email was from a business owner indicating that the trial has been very beneficial to business owners. The email implied that commuters have been deterred from parking in the Cypress Street lot since ten meters have been shortened from 12-hour meters to 6-hour meters. One email was from a resident, who is also a commuter, opposing this trial requesting that the 6-hour meter return to being a 12-hour meter.

Mr. Koses then opened the discussion to members of the public who were present. Two business owners spoke in support of making this trial permanent. They said that the trial has benefitted their businesses in a positive way. They then said that they feel the commuters should park at the MBTA stations. They then suggested converting additional meters to six-hour meters.

Sgt. Babcock asked how many 12-hour meters are in the area. Mr. Koses answered that there are thirty-five on street meters on Centre and Lyman Street. There are sixty-four in the Pelham and Pleasant Streets municipal lots and there are twenty-eight in the Cypress Street parking lot.

A Council member said that residents were not notified of this request; therefore, they would not know of the trial until arriving to park to commute.

Without further discussion, Sgt. Babcock made a motion to hold this item pending a draft Traffic and Parking Regulation (TPR) to approve this trial of ten six-hour meters in the Cypress Street Parking Lot. Council members agreed 5-0.

TC10-15 WARD 6 ALDERMEN, requesting one 15-minute parking space on Beacon Street, Newton Centre in front of or near Murray's Liquors, in order to serve the needs of several nearby businesses, many of whose customers need very short-term parking, and who may lose business due to the current lack of it. (Ward 6) [03/02/15 @ 11:55 AM]

HELD 3-1, Babcock opposed on 06/25/15. Hold for trial. Remove parking meter #762 in front of Murray's Liquors. Replace with the following sign: 15-minute time limit, 8:00 a.m. to 6:00 p.m., Monday through Saturday.

HELD 4-0 on 02/25/16.

ACTION: NO ACTION NECESSARY 5-0. Trial to end, two-hour parking meter to be returned.

NOTE: Council members were provided with a location map, site photos, the location of current parking meters in the area and observations. Mr. Koses provided Council members with a brief review

of the trial to remove parking meter #762 in front of Murray's Liquors, replacing with a 15-minute

time limit, 8:00 a.m. to 6:00 p.m., Monday through Saturday. He then stated that most on-street parking in Newton Centre has a two-hour limit.

Observations:

Six site visits were performed at this location; data was collected in August 2015, February and November 2016, indicating that most vehicles are not abusing the 15-minute parking limit although some vehicles were observed parking longer than the 15-minute allowance. Data collected indicated that an average of 24% of vehicles parked in that space beyond the time limit.

Mr. Koses opened the discussion to members of the public who were present. There was no public comment.

Sgt. Babcock stated that a 15-minute parking space is difficult to enforce. In reality, the parking control clerk would not be able to enforce this. The length of the route only enables the parking control clerk to return to this location in 45 minutes to one hour. He then said that the department made observations noting that some drivers had the tendency to stay longer than the 15-minutes allowed; others obeyed the 15-minute posted sign.

Without further discussion, Councilor Ciccone made a motion for no action necessary, ending the trial. Council members agreed 5-0. Mr. Koses stated that the 15-minute parking sign would remain until a two-hour meter is available for installation.

TC24-16 WARD 6 COUNCILORS, on behalf of Rowena Road residents, requesting a discussion of parking restrictions on Rowena Road, including the possible implementation of a one-side only parking regulation along all or part of Rowena Road. (Ward 6) [06/22/16 @ 7:58 PM]

HELD (4-0) on 07/28/16. Held for a trial of the following: No parking, any time, south side, entire length.

ACTION: HELD 5-0. Hold for a trial of the following: No parking, any time, south side, Allerton Road to Cedric Road. Note: Signage between Allerton Road and Clark Street will be removed. Additional parking regulations may be installed on the north side of Rowena Road, within 50 feet of the intersection of Allerton Road, based on engineering judgment. This item will not be placed on the Traffic Council agenda until at least July 2016 to allow for a trial during the spring soccer season.

NOTE: Council members were provided with a location map, photos and the characteristics of Rowena Road. Mr. Koses provided Council members with a brief review of the trial of no parking, any time, south side, entire length.

Mr. Koses opened the discussion to members of the public who were present. Residents stated that they support a parking restriction, especially during soccer season. The trial has proved to be successful. Vehicles were parking on both sides of the street, across from one another, severely constricting passage. Vehicles were parking close to driveways making it difficult to exit driveways. It was a public safety concern because of the difficulties for emergency vehicle access. Residents

suggested implementing the restriction during soccer season, perhaps April through November. They then suggested implementing the restriction on Rowena Road between Allerton Road to Cedric Road.

They then suggested the addition of parking restriction on the north side of Rowena Road between Allerton Road to Cedric Road and restrict parking within 50 feet of the intersection of Allerton.

Council members briefly discussed the residents concerns and agreed on implementing a new trial. Sgt. Babcock requested that the item be held until soccer season ends the end of June.

Without further discussion, Mr. Koses made a motion to hold this item for a new trial of no parking, any time, south side, Allerton Road to Cedric Road. Additional parking regulations may be installed on the north side of Rowena Road, within 50 feet of the intersection of Allerton Road, based on engineering judgment. Council members agreed 5-0.

TC40-16 DANIELLE PROVOST, 67 Grafton Street, requesting a stop sign at the intersection of Grafton, Homer and Water Streets to address safety concerns and deter speeders. (Ward 6) [10/11/16 @ 9:03 AM]

ACTION: APPROVED 5-0. Approved language of TPR Number 273.

This item may be appealed through the close of business January 4, 2017.

NOTE: Council members were provided with a location map, photos and recommendations.

Mr. Koses said that there is a stop sign already in place at the intersection of Water and Homer Streets. There is no stop sign at the end of Grafton Street.

Mr. Koses recommends the installation of a new stop sign at the intersection of Grafton Avenue, westbound at Water and Homer Streets.

Mr. Koses opened the discussion to members of the public who were present. Residents stated that drivers have the tendency to speed at this intersection and approach the intersection as if they were approaching a highway ramp. Grafton Street is a one-way street with many pedestrians. Residents present stated that they support a stop sign at the intersection of Grafton, Homer and Water Streets to deter speeders and address safety concerns.

Council members were provided with a draft Traffic and Parking Regulation (TPR) for consideration, attached to this report. Without discussion, Sgt. Babcock made a motion to approve this request. Council members agreed 5-0. Mr. Koses stated that this item may be appealed through the close of business January 4, 2017.

TC48-16 DAVID KOSES, TRANSPORTATION COORDINATOR, requesting a stop sign at Elgin Street, eastbound, at the intersection of Langley Road. (Ward 6) [11/21/16 @ 8:59 AM]

ACTION: APPROVED AS AMENDED 5-0. Approved language of TPR Number 274.

This item may be appealed through the close of business January 4, 2017.

NOTE: Council members were provided with a location map, photos and recommendations.

Mr. Koses recommends the installation of a new stop sign at the end of Elgin Street, *westbound*, at the intersection with Langley Road.

Mr. Koses said that he docketed this request after a request was received through the City's

WebQA/311 system. He then said that he received one phone call opposing this stop sign request. Councilor Blazar informed the Committee Clerk that he supports this request.

Mr. Koses opened the discussion to members of the public who were present. There was no public comment.

Council members were provided with a draft Traffic and Parking Regulation (TPR) for consideration, attached to this report. Without discussion, Councilor Ciccone made a motion to approve as amended this stop sign request at Elgin Street, *westbound* at the intersection of Langley Road. Council members agreed 5-0. Mr. Koses stated that this item may be appealed through the close of business January 4, 2017.

TC47-16 DAVID KOSES, TRANSPORTATION COORDINATOR, requesting the addition of on-street accessible parking spaces into the Traffic and Parking Regulations (TPR). [11/21/16 @ 8:59 AM]

**ACTION: APPROVED 5-0. Approved language of TPR Numbers 275 and 276.
This item may be appealed through the close of business January 4, 2017.**

NOTE: Mr. Koses stated that this item would allow the list of on-street accessible parking spaces be incorporated into the Traffic and Parking Regulations.

Council members were provided with draft Traffic and Parking Regulations (TPR) for consideration, attached to this report. Mr. Koses said that the streets in the draft TPR may need to be adjusted once each street is reviewed in the field. City Ordinance requires “the clerk of traffic council shall notify the owner and/or occupant in January of every odd-numbered year to verify that the space continues to be utilized by a disabled person or disabled veteran. The traffic council may immediately remove any such space no longer so utilized, or any space for which no response to the clerk’s inquiry is received”.

Without discussion, Mr. Koses made a motion to approve the inclusion of on-street accessible parking spaces into the Traffic and Parking Regulations. Council members agreed 5-0. Mr. Koses stated that this item may be appealed through the close of business January 4, 2017.

Nominations, Election and Discussion of term length for Traffic Council Chair

ACTION: APPROVED 5-0. David Koses elected Traffic Council Chair through December 31, 2017.

NOTE: Sgt. Babcock nominated Mr. Koses as the 2017 Traffic Council Chair. Mr. Koses accepted. Council members agreed 5-0.

TC43-16 DAVID KOSES, TRANSPORTATION COORDINATOR, requesting a stop sign at Elgin Street, eastbound, at the intersection of Langley Road. (Ward 6) [10/26/16 @ 11:29 AM]

ACTION: NO ACTION NECESSARY 5-0.

NOTE: This item is a duplicate of TC48-16, discussed previously this evening. Without discussion, Mr. Koses made a motion for no action necessary. Council members agreed 5-0.

Respectfully submitted,
David Koses, Transportation Coordinator
Traffic Council Chair

CITY OF NEWTON

TRAFFIC & PARKING REGULATION

TPR NO. 273

December 15, 2016

In accordance with the vote of the Traffic Council on December 15, 2016:

The City of Newton Traffic & Parking Regulations, as established in Ordinance Z-16, dated December 3, 2007, as amended, be further amended as follows:

By ADDING to the provisions of **Sec. TPR-147. Obedience to isolated stop signs.**, the following:

Grafton Street at Homer and Water Streets, westbound.

Approved as to legal form and character:

(SGD) DONNALYN B. LYNCH KAHN
City Solicitor

(SGD) DAVID A. OLSON
City Clerk

CITY OF NEWTON

TRAFFIC & PARKING REGULATION

TPR NO. 274

December 15, 2016

In accordance with the vote of the Traffic Council on December 15, 2016:

The City of Newton Traffic & Parking Regulations, as established in Ordinance Z-16, dated December 3, 2007, as amended, be further amended as follows:

By ADDING to the provisions of **Sec. TPR-147. Obedience to isolated stop signs.**, the following:

Elgin Street at Langley Road, westbound.

Approved as to legal form and character:

(SGD) DONNALYN B. LYNCH KAHN
City Solicitor

(SGD) DAVID A. OLSON
City Clerk

CITY OF NEWTONTRAFFIC & PARKING REGULATION

TPR NO. 275

December 15, 2016

In accordance with the vote of the Traffic Council on December 15, 2016:

The City of Newton Traffic & Parking Regulations, as established in Ordinance Z-16, dated December 3, 2007, as amended, be further amended as follows:

By **CREATING Sec. TPR-200. Accessible Parking Spaces.**

The following accessible parking spaces are hereby designated for on-street accessible parking spaces as described in Sec. 19-178. Disabled persons and disabled veterans parking of Newton Revised Ordinances, 2012.

By **ADDING** to the provisions of **Sec. TPR-200. Accessible Parking Spaces.**

Street	Location
<i>Albemarle Road</i>	east side, from a point 265 feet north of Watertown Street northerly 37 feet
<i>Albemarle Road</i>	east side; first angled parking space north of Horace Mann driveway
<i>Algonquin Road</i>	in front of #135
<i>Aspen Avenue</i>	north side; 130 feet west of Forest Ave; westerly 28 feet
<i>Auburn Street</i>	north side; 248 feet west of Lexington St; westerly 32 feet
<i>Beacon Street</i>	north side; angled parking spaces, from a point 36 feet west of Windsor Road, westerly 12 feet
<i>Beacon Street</i>	north side; in front of house #865 Beacon Street
<i>Brookline Street</i>	north side; 122 feet west of Hartman Rd; westerly 20 feet
<i>Brookline Street</i>	north side; 526 feet west of Hartman Road westerly 44 feet
<i>Chapel Street</i>	east side; 270 feet north of Green St; northerly 20 feet
<i>Chapel Street</i>	in front of 180 Chapel Street
<i>Charlesbank Road</i>	south side; 184 feet west of Street James St; westerly 22 feet
<i>Churchill Street</i>	in front of 58 Churchill Street
<i>Clinton Street</i>	in front of 69 Clinton Street
<i>Clinton Street</i>	south side; from Shamrock St; easterly 57 feet
<i>Colonial Avenue</i>	east side; 72 feet south of California Street

<i>Commonwealth Avenue</i>	north side, north Drive; 338 feet east of Waban Hill Rd; easterly 20 feet
<i>Commonwealth Avenue</i>	north side, north Drive; from a point 47 feet west of Higgins St; westerly 20 feet
<i>Commonwealth Avenue</i>	south side, south Drive; 231 feet east of Melrose St; easterly 22 feet
<i>Cottage Court</i>	south side; 169 feet east of Adams St; easterly 20 feet
<i>Court Street</i>	south side; 76 feet east of Beach St; easterly 28 feet
<i>Cypress Street</i>	east side; 300 feet north of Jackson St; northerly 20 feet
<i>Dalby Street</i>	east side; 94 feet north of Watertown St; northerly 20 feet
<i>Elliot Street</i>	at 344 Elliot Street
<i>Elm Road</i>	south side; 172 feet east of Lowell Ave; easterly 156 feet
<i>Gardner Street</i>	in front of #22
<i>Hawthorn Street</i>	in front of 42 Hawthorn Street
<i>Homer Street</i>	north side; 30 feet west of Centre St; westerly 20 feet
<i>Homer Street</i>	south side; 125 feet west of Walnut St; westerly 20 feet
<i>Kimball Terrace</i>	west side; 273 feet south of Otis St; southerly 20 feet
<i>Larkin Road</i>	north side; 93 feet east of Westwood St; easterly 20 feet
<i>Lincoln Road</i>	south side; 52 feet east of Shamrock St; easterly 22 feet
<i>Murray Road</i>	west side; 47 feet north of Webster St; northerly 20 feet
<i>Nevada Street</i>	in front of 262 Nevada Street
<i>Nevada Street</i>	in front of the ramp leading to #538 California Street
<i>Plymouth Road</i>	in front of 2112 Plymouth Road
<i>Suffolk Road</i>	south side; 13 feet west of Woodman Rd; westerly 20 feet
<i>Suffolk Road</i>	south side; 27 feet east of Woodman Rd; westerly 20 feet
<i>Temple Street</i>	one handicap space, near the entrance to the Temple Shalom Parking Lot
<i>Trowbridge Street</i>	north side, in front of house #26
<i>Walnut Park</i>	west side; 327 feet south of Waban St; southerly 44 feet
<i>Walnut Street</i>	east side; 100 feet north of Washington St; northerly 20 feet
<i>Walnut Street</i>	east side; 180 feet south of Linwood Ave; southerly 20 feet
<i>Ward Street</i>	north side; 126 feet east of Irving St; easterly 40 feet
<i>Washington Park</i>	in front of #61, near the existing handicap ramp
<i>Washington Park</i>	north side; 130 feet east of Park Place; easterly 25 feet
<i>Washington Street</i>	convert the parking space eastbound side of Washington Street, east of the crosswalk, in front of Elements Massage into a handicap space
<i>Washington Street</i>	north side; 100 feet east of Walnut St; easterly 20 feet
<i>Washington Street</i>	north side; 45 feet west of Waltham St; westerly 22 feet
<i>Watertown Street</i>	in front of #468
<i>Watertown Street</i>	north side; 20 feet east of Bridge St; easterly 22 feet
<i>Watertown Street</i>	south side; 46 feet east of Dunstan St; easterly 20 feet
<i>Watertown Street</i>	south side; 92 feet east of Chapel St; easterly 20 feet
<i>Webster Street</i>	32 feet west of Harvey Place; westerly 20 feet
<i>West Street</i>	east side; 272 feet south of Watertown St; southerly 22 feet
<i>West Street</i>	east side; 530 feet south of Watertown St; southerly 20 feet
<i>West Street</i>	east side; 80 feet north of Middle St; northerly 20 feet
<i>West Street</i>	in front of #20

West Street
Woodward Street

in front of #38 or #42
south side; 20 feet east of Wyman St; easterly 22 feet

And renumbering **Sec. TPR-196-TPR-201. Reserved.**

Approved as to legal form and character:

(SGD) DONNALYN B. LYNCH KAHN
City Solicitor

(SGD) DAVID A. OLSON
City Clerk

CITY OF NEWTON

TRAFFIC & PARKING REGULATION

TPR NO. 276

December 15, 2016

In accordance with the vote of the Traffic Council on December 15, 2016:

The City of Newton Traffic & Parking Regulations, as established in Ordinance Z-16, dated December 3, 2007, as amended, be further amended as follows:

By CREATING **Sec. TPR-200. Accessible Parking Spaces.**

The following accessible parking spaces are hereby designated for on-street accessible parking spaces as described in Sec. 19-178. Disabled persons and disabled veterans parking of Newton Revised Ordinances, 2012.

By ADDING to the provisions of **Sec. TPR-200. Accessible Parking Spaces.**

<i>Adams Street</i>	north side; 220 feet from Centre St; westerly 20 feet
<i>Albemarle Road</i>	Albemarle Field, Two (2) spaces in front of gazebo
<i>Armory Street</i>	west side
<i>Armory Street</i>	west side
<i>Armory Street</i>	west side; 230 feet north of Washington St; northerly to end
<i>Ash Street</i>	north side; opposite Auburndale Brach library
<i>Beacon Street</i>	northwesterly corner of Beacon Street and Windsor Road IN FRONT of Bank of America
<i>Bowen Street</i>	south side; 435 feet west of Centre St; 20 feet westerly
<i>Bowen Street</i>	south side; 460 feet west of Centre St; 20 feet westerly
<i>Centre Green</i>	east side; from a point 50 feet south of Lyman St; southerly 20 feet
<i>Commonwealth Avenue</i>	On either side of the front pathway to Street Ignatius Church
<i>Cook Street</i>	east side; 122 feet south of Watertown St; southerly 20 feet
<i>Crescent Avenue</i>	east side; 105 feet south of Norwood Ave; southerly 22 feet
<i>Crescent Avenue</i>	one space, in front of #72 Crescent Avenue
<i>Curve Street</i>	Two spaces in front of #21 Curve Street (Myrtle Baptist Church)
<i>Elliot Street</i>	south side; 195 feet east of Chestnut St; easterly 25 feet
<i>Hull Street</i>	Three (3) handicap parking spaces, north side, Hull Street, just to the west of the ramp.
<i>Lexington Street</i>	west side; from Commonwealth Avenue north Drive; southerly 20 feet

<i>Lincoln Street</i>	opposite the hp ramp at the Newton Highlands Congregational Church on Lincoln Street
<i>Madison Avenue</i>	east side of Walnut Street, immediately north of the crosswalk,
<i>Trowbridge Street</i>	in front of 20 Trowbridge Street
<i>Union Street</i>	Corner of Union Street and Herrick Road
<i>Walnut Street</i>	east side, immediately north of the crosswalk, to an existing metered space.
<i>Walnut Street</i>	SE side of Newtonville Ave crosswalk, southerly 20 feet
<i>Washington Street</i>	20 feet east of Herman Terrace; easterly 20 feet
<i>Washington Street</i>	southeast side; from intersection of NE line of Bacon Street and SE line of Washington St; southwesterly 20 feet
<i>Watertown Street</i>	southeast side; in front of #460
<i>Windsor Road</i>	NW corner of Beacon/Windsor
<i>Wyman Street</i>	Between Fleet Bank & Post Office

And renumbering **Sec. TPR-196-TPR-201. Reserved.**

Approved as to legal form and character:

(SGD) DONNALYN B. LYNCH KAHN
City Solicitor

(SGD) DAVID A. OLSON
City Clerk

Traffic Council

City of Newton

December 15, 2016

Agenda (portion)

- ❖ TC35-16 COUNCILORS SANGIOLO, HARNEY AND GENTILE, requesting parking restrictions on a) Maple Street from Woodland Road to Auburn Street; b) Central Street from Commonwealth Avenue to Grove Street; c) Auburn Street from Commonwealth Avenue to Grove Street to alleviate increased parking due to construction at Lasell College and discontinued use of the Lasell parking lots as temporary modular classrooms have been located on the parking lots. (Ward 4)
- ❖ TC18-15 NICOLE VAJANI, 15 Cypress Street, requesting replacement of all 12-hour meters to short-term meters (3-hour, 6-hour or 8-hour meters) to deter commuters and to accommodate Newton Centre patrons and businesses. (Ward 6)
- ❖ TC10-15 WARD 6 ALDERMEN, requesting one 15-minute parking space on Beacon Street, Newton Centre in front of or near Murray's Liquors, in order to serve the needs of several nearby businesses, many of whose customers need very short-term parking, and who may lose business due to the current lack of it. (Ward 6)
- ❖ TC24-16 WARD 6 COUNCILORS, on behalf of Rowena Road residents, requesting a discussion of parking restrictions on Rowena Road, including the possible implementation of a one-side only parking regulation along all or part of Rowena Road. (Ward 6)

Agenda (continued)

- ❖ TC40-16 DANIELLE PROVOST, 67 Grafton Street, requesting a stop sign at the intersection of Grafton, Homer and Water Streets to address safety concerns and deter speeders. (Ward 6)
- ❖ TC48-16 DAVID KOSES, TRANSPORTATION COORDINATOR, requesting a stop sign at Elgin Street, eastbound, at the intersection of Langley Road. (Ward 6) [11/21/16 @ 8:59 AM]
- ❖ TC47-16 DAVID KOSES, TRANSPORTATION COORDINATOR, requesting the addition of on-street accessible parking spaces into the Traffic and Parking Regulations (TPR).
- ❖ Nominations, Election and Discussion of term length for Traffic Council Chair

12.15.16

3

Traffic Council

TC35-16

∞ 4 ∞

Requesting parking restrictions on a) Maple St from Woodland Rd to Auburn St; b) Central St from Commonwealth Ave to Grove St; c) Auburn St from Commonwealth Ave to Grove St

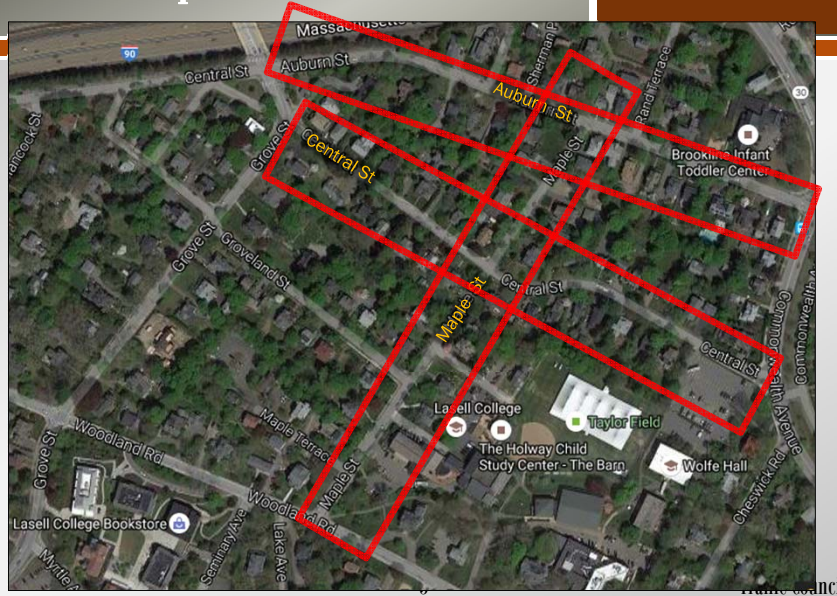
12.15.16

4

Traffic Council

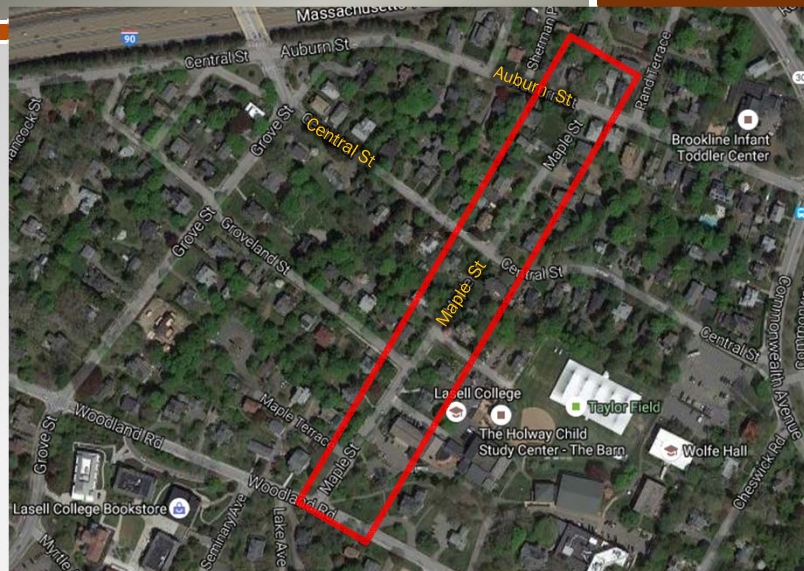
Location Map

TC35-16



Location Map: Maple Street

TC35-16



Site Photo – Maple Street	TC35-16
	
12.15.16	7
Traffic Council	

Maple Street - Characteristics	TC35-16														
<p><u>General Characteristics</u></p> <ul style="list-style-type: none"> Public Way, 1308 feet long Width varies 21-24 feet wide Sidewalks on both sides Utility poles on the south side; Hydrants on the south side <p><u>Parking Observations:</u></p> <table border="1" style="margin-left: 20px; border-collapse: collapse; width: 50%;"> <thead> <tr> <th style="text-align: left;">Date / Time</th> <th style="text-align: left;">Maple Street</th> </tr> </thead> <tbody> <tr> <td>We 11/2 3:30 PM</td> <td>26</td> </tr> <tr> <td>Th 11/3 2:30 PM</td> <td>23</td> </tr> <tr> <td>Fr 11/4 1:30 PM</td> <td>23</td> </tr> <tr> <td>Mo 11/7 10:00 AM</td> <td>20</td> </tr> <tr> <td>Tu 11/8 9:00 AM</td> <td>25</td> </tr> <tr> <td>We 11/9 11:00 AM</td> <td>30 + 1 motorcycle</td> </tr> </tbody> </table>		Date / Time	Maple Street	We 11/2 3:30 PM	26	Th 11/3 2:30 PM	23	Fr 11/4 1:30 PM	23	Mo 11/7 10:00 AM	20	Tu 11/8 9:00 AM	25	We 11/9 11:00 AM	30 + 1 motorcycle
Date / Time	Maple Street														
We 11/2 3:30 PM	26														
Th 11/3 2:30 PM	23														
Fr 11/4 1:30 PM	23														
Mo 11/7 10:00 AM	20														
Tu 11/8 9:00 AM	25														
We 11/9 11:00 AM	30 + 1 motorcycle														
12.15.16	8														
Traffic Council															

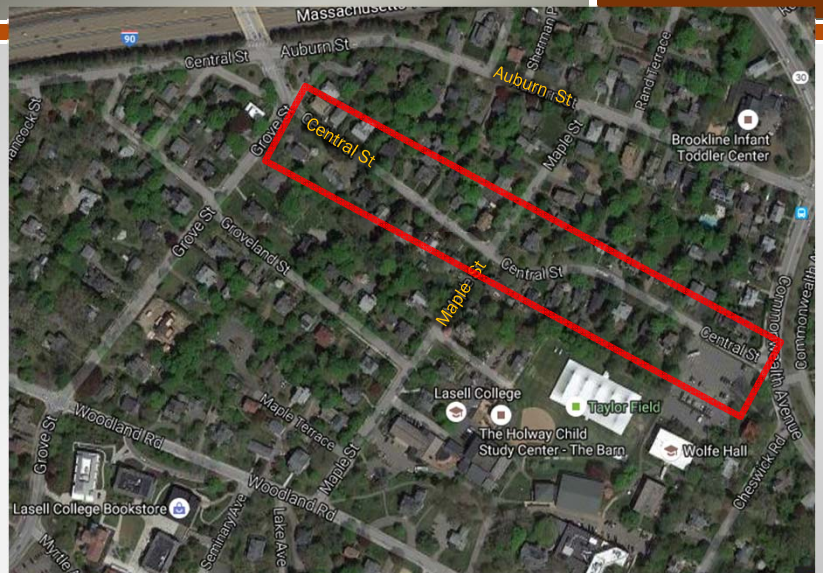
Maple St: street width And currently posted parking regulations



TC35-16



Location Map: Central Street

TC35-16



<h2>Site Photo — Central Street</h2>	<h2>TC35-16</h2>	
 <p style="text-align: center; background-color: yellow;">Looking West at curve b/t Comm & Maple</p>	 <p style="text-align: center; background-color: yellow;">Looking West From Maple St</p>	
12.15.16	11	Traffic Council

<h2>Central Street - Characteristics</h2>	<h2>TC35-16</h2>																					
<p><u>General Characteristics</u></p> <ul style="list-style-type: none"> Public Way, 650' feet long (Grove to Maple); 850' long (Maple to Commonwealth) 18-23' wide Sidewalks on both sides Utility poles on the south side; Hydrants on the south side <p><u>Parking Observations:</u></p> <table border="1" style="margin-left: auto; margin-right: auto; border-collapse: collapse;"> <thead> <tr> <th style="padding: 5px;">Date / Time</th> <th style="padding: 5px;">Central St Grove to Maple</th> <th style="padding: 5px;">Central St Maple to Comm</th> </tr> </thead> <tbody> <tr> <td style="padding: 5px;">We 11/2 3:30 PM</td> <td style="padding: 5px; text-align: center;">0</td> <td style="padding: 5px; text-align: center;">11</td> </tr> <tr> <td style="padding: 5px;">Th 11/3 2:30 PM</td> <td style="padding: 5px; text-align: center;">0</td> <td style="padding: 5px; text-align: center;">3</td> </tr> <tr> <td style="padding: 5px;">Fr 11/4 1:30 PM</td> <td style="padding: 5px; text-align: center;">0</td> <td style="padding: 5px; text-align: center;">0</td> </tr> <tr> <td style="padding: 5px;">Mo 11/7 10:00 AM</td> <td style="padding: 5px; text-align: center;">0</td> <td style="padding: 5px; text-align: center;">3</td> </tr> <tr> <td style="padding: 5px;">Tu 11/8 9:00 AM</td> <td style="padding: 5px; text-align: center;">0</td> <td style="padding: 5px; text-align: center;">6</td> </tr> <tr> <td style="padding: 5px;">We 11/9 11:00 AM</td> <td style="padding: 5px; text-align: center;">0</td> <td style="padding: 5px; text-align: center;">7</td> </tr> </tbody> </table>		Date / Time	Central St Grove to Maple	Central St Maple to Comm	We 11/2 3:30 PM	0	11	Th 11/3 2:30 PM	0	3	Fr 11/4 1:30 PM	0	0	Mo 11/7 10:00 AM	0	3	Tu 11/8 9:00 AM	0	6	We 11/9 11:00 AM	0	7
Date / Time	Central St Grove to Maple	Central St Maple to Comm																				
We 11/2 3:30 PM	0	11																				
Th 11/3 2:30 PM	0	3																				
Fr 11/4 1:30 PM	0	0																				
Mo 11/7 10:00 AM	0	3																				
Tu 11/8 9:00 AM	0	6																				
We 11/9 11:00 AM	0	7																				
12.15.16	12	Traffic Council																				

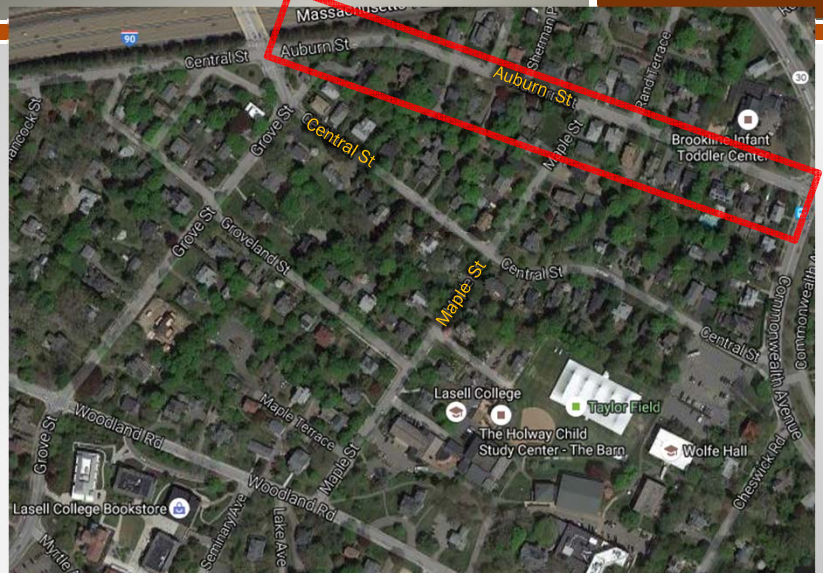
Central St: street width And currently posted parking regulations

TC35-16



Location Map: Auburn Street

TC35-16



Site Photo — Auburn Street

TC35-16



12.15.16




15

Traffic Council

Auburn St: street width And currently posted parking regulations

TC35-16



LEGEND

- ▬ No Restrictions
- ▬ No Parking 9-5, except Sat, Sun, Holiday
- ▬ No Parking 7-6, except Sat, Sun, Holiday
- ▬ 2-hr limit 9-5, except Sat, Sun, Holiday
- ▬ 2-hr limit 9-5, except Sat, Sun, Holiday
- ▬ No parking 7-8am /15 min. limit 8-9am ex Sa, Su, Ho
- ▬ No Parking Any Time

<h2>Auburn Street - Characteristics</h2>	<h2>TC35-16</h2>														
<p><u>General Characteristics</u></p> <ul style="list-style-type: none"> 21' - 33' feet wide along this section. Utility poles on the south side. Hydrants on the south side <p><u>Parking Observations:</u></p> <table border="1" style="margin-left: auto; margin-right: auto; border-collapse: collapse;"> <thead> <tr> <th style="text-align: left;">Date / Time</th> <th style="text-align: left;">Auburn Street</th> </tr> </thead> <tbody> <tr> <td>We 11/2 3:30 PM</td> <td>1</td> </tr> <tr> <td>Th 11/3 2:30 PM</td> <td>2</td> </tr> <tr> <td>Fr 11/4 1:30 PM</td> <td>0</td> </tr> <tr> <td>Mo 11/7 10:00 AM</td> <td>0</td> </tr> <tr> <td>Tu 11/8 9:00 AM</td> <td>0</td> </tr> <tr> <td>We 11/9 11:00 AM</td> <td>0</td> </tr> </tbody> </table>		Date / Time	Auburn Street	We 11/2 3:30 PM	1	Th 11/3 2:30 PM	2	Fr 11/4 1:30 PM	0	Mo 11/7 10:00 AM	0	Tu 11/8 9:00 AM	0	We 11/9 11:00 AM	0
Date / Time	Auburn Street														
We 11/2 3:30 PM	1														
Th 11/3 2:30 PM	2														
Fr 11/4 1:30 PM	0														
Mo 11/7 10:00 AM	0														
Tu 11/8 9:00 AM	0														
We 11/9 11:00 AM	0														
12.15.16	17	Traffic Council													

<h2>Auburndale Village Parking Plan</h2>	<h2>TC35-16</h2>	
<ul style="list-style-type: none"> Covers all or part of 16 streets in Auburndale - on the other side of Grove Street Developed for the following reasons <ul style="list-style-type: none"> Address commuter parking in residential neighborhood Balance parking needs of residents, employees Provide for more consistency and ease of enforcement Allow residents to park longer than posted regulations <ul style="list-style-type: none"> Through permit system at cost of \$25/year + 2 free visitor placards Plan took about a year to develop and role out Plan took about a year to develop and role out Continues to expand with new streets becoming part of the plan No parking permit program currently available to college students or commuters - anywhere in Newton 		
12.15.16	18	Traffic Council

Recommendation from 11.17.16 Meeting

TC35-16

HOLD ITEM TO DRAFT TPR LANGUAGE

Add Two Blocks of Central St and One Block of Maple St into the Auburndale Village Parking Plan

- No Parking on One Side due to Narrow Width
- Resident Only at All Times on Central St between Grove St and Maple St, due to street width
- One-hour limit except by Auburndale Parking Permit, due to proximity to Lasell College:
 - Central St between Maple St and Commonwealth Ave
 - Maple St between Auburn St and Central St

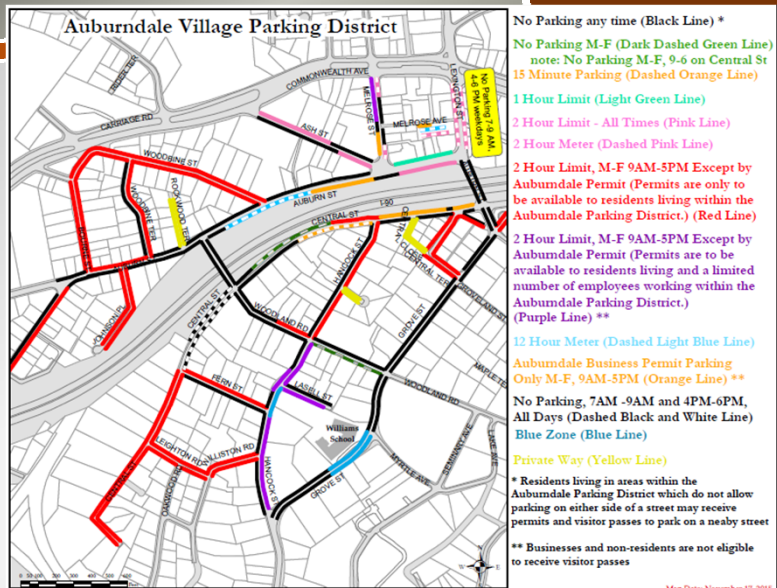
12.15.16

19

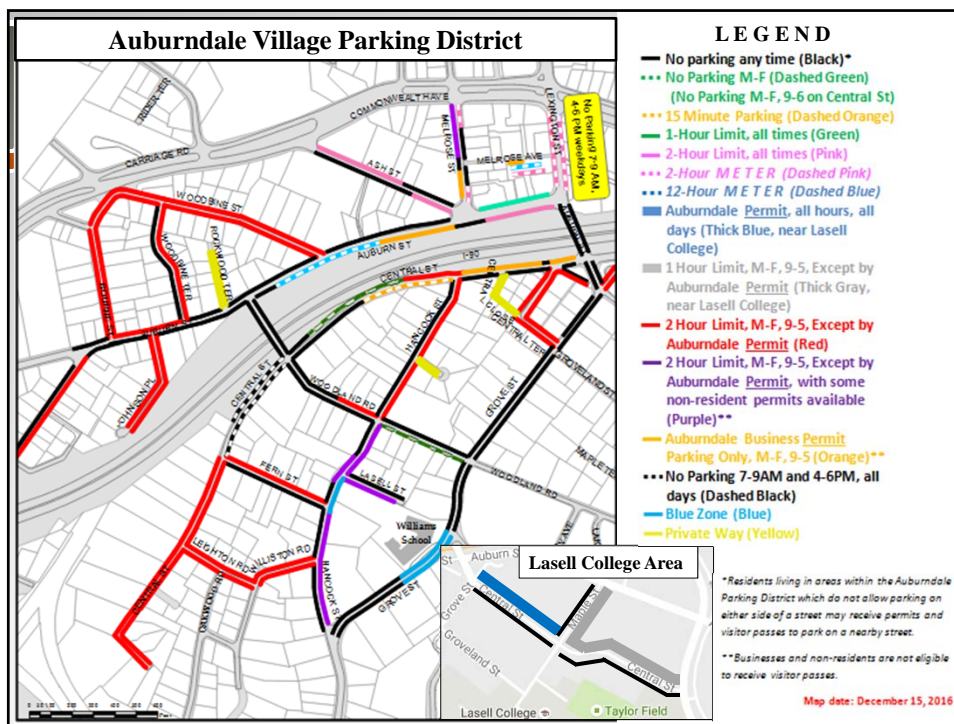
Traffic Council

Auburndale Village Parking Plan

TC35-16



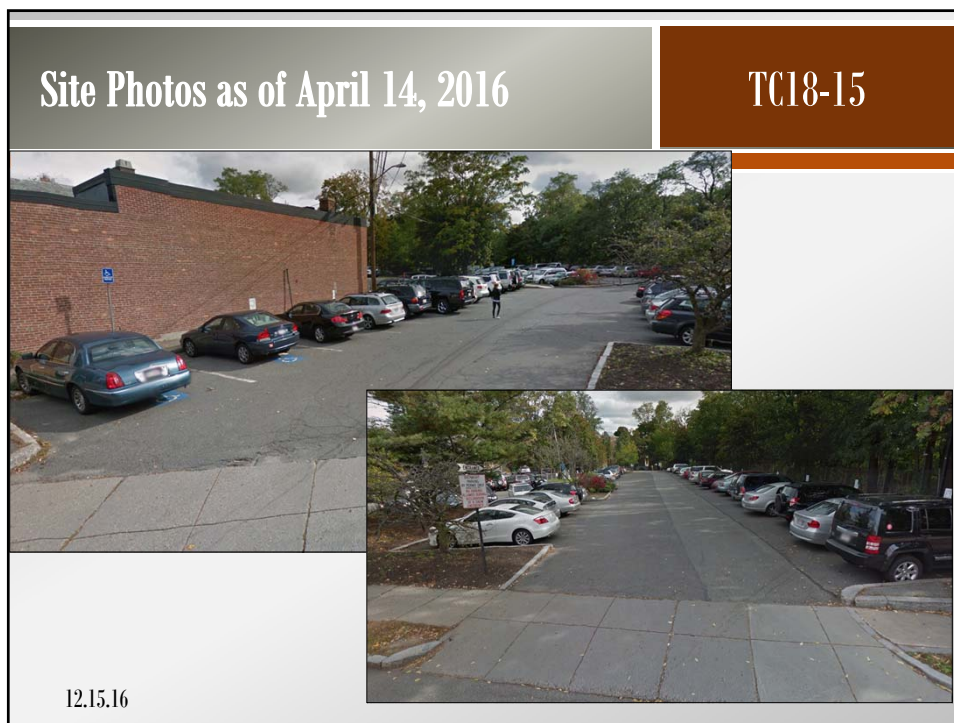
12.15.16

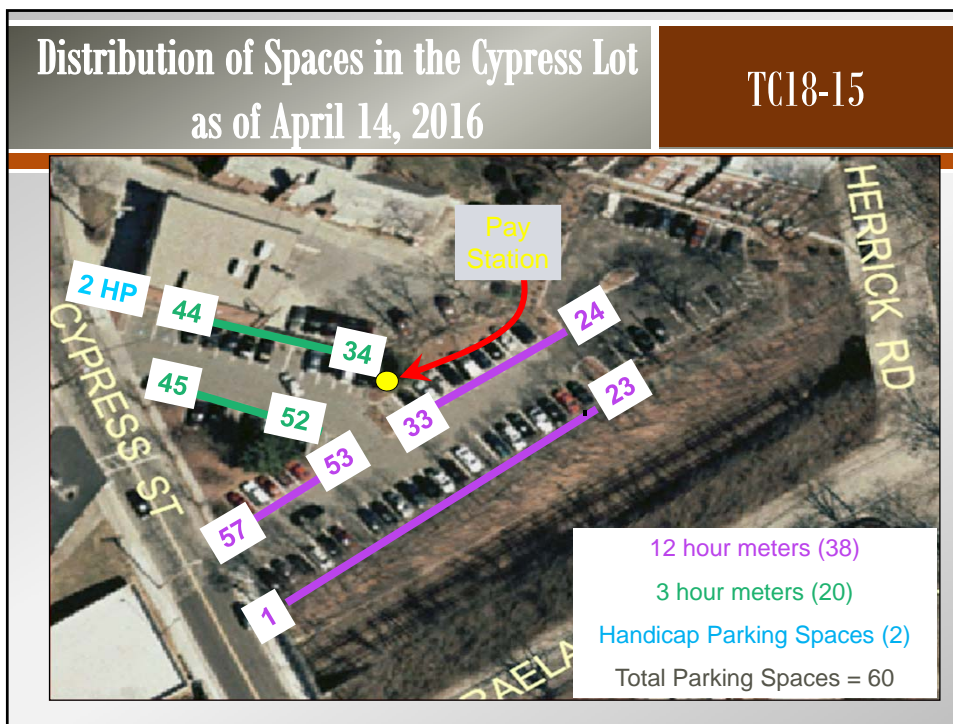


TC18-15



Request to replace all 12-hour meters to short-term meters in the Cypress St Lot





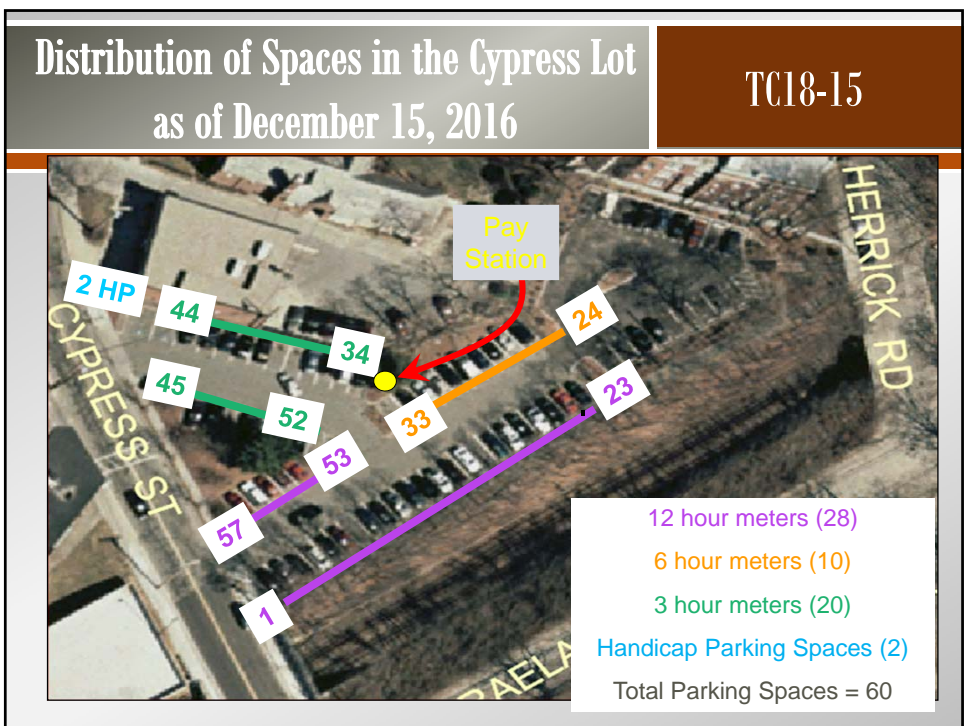
Action from 4.14.16 Meeting

TC18-15

HOLD ITEM FOR TRIAL: Convert 10 Parking Spaces from Long-Term to Six-Hour Limit

- Passport Parking became operational beginning June 15, 2016
- Ten spaces were temporarily converted to six-hour limit during September, 2016

12.15.16
26
Traffic Council



TC10-15

29

15-minute parking space on Beacon Street, Newton Centre
in front of or near Murray's Liquors

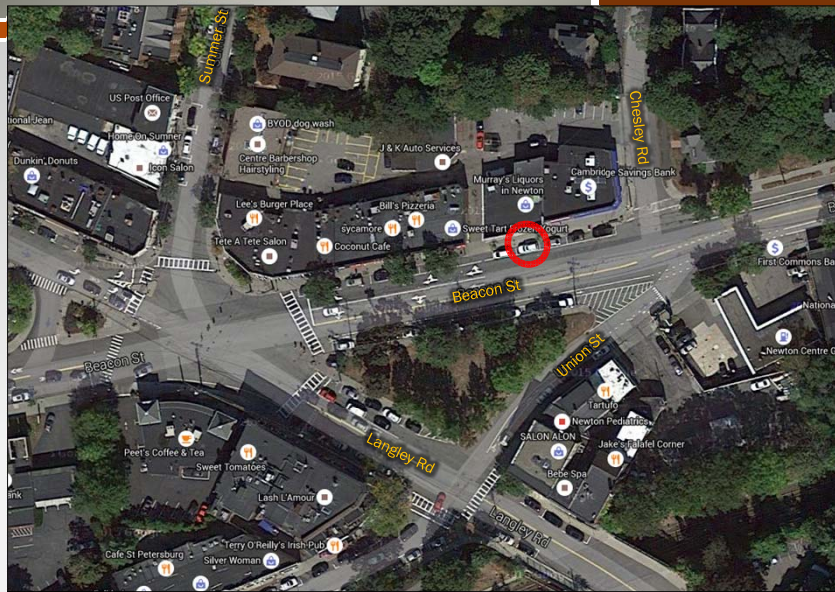
12.15.16

29

Traffic Council

Location Map

TC10-15



Site Photos — Beacon St

TC10-15



Beacon Street looking west toward Langley/Summer St

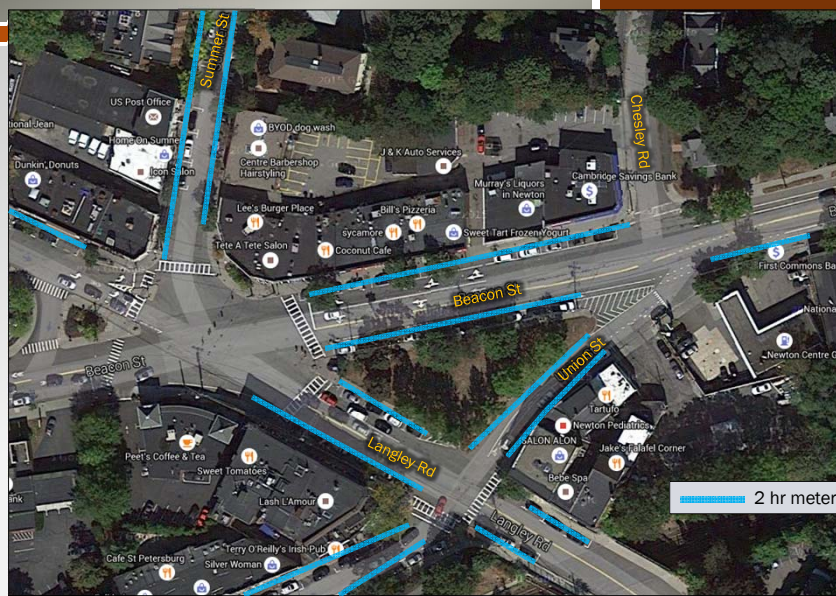
12.15.16

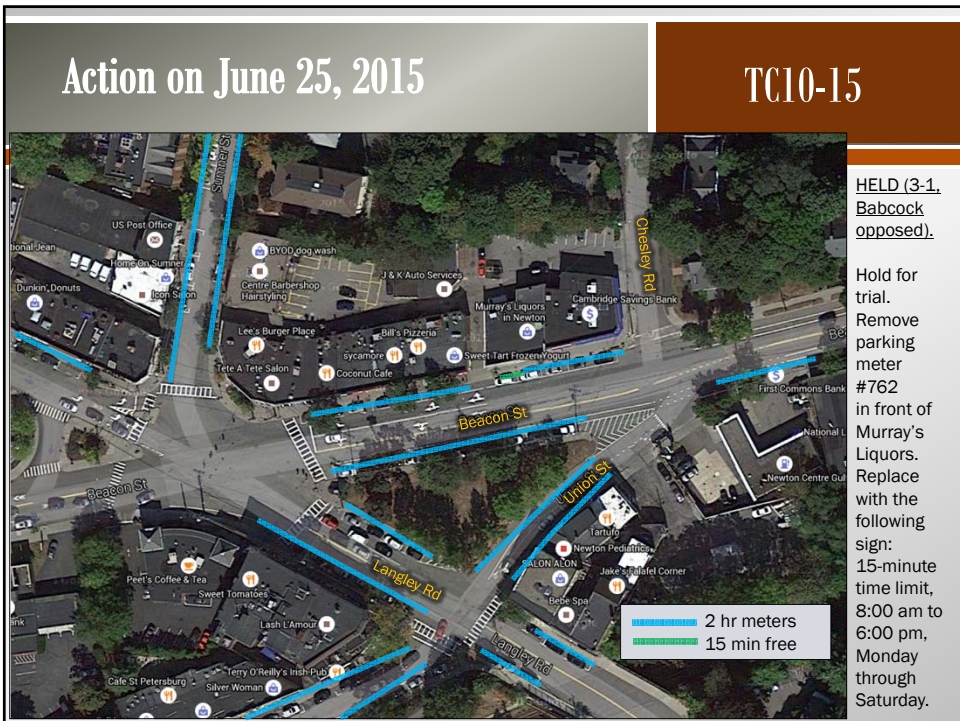
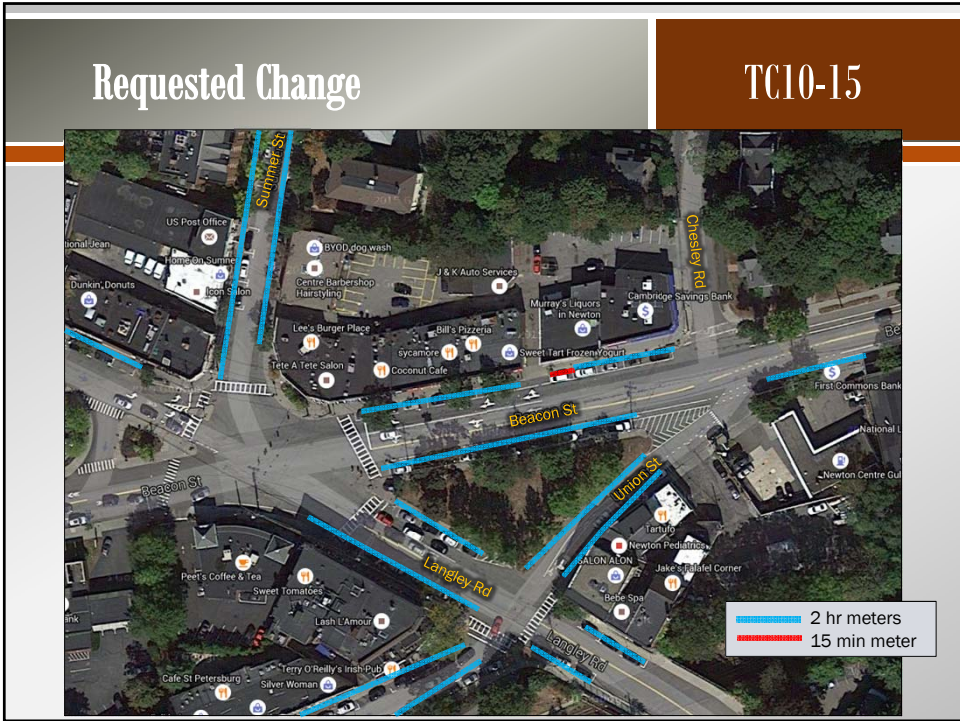
31

Traffic Council

Current Parking Meters in the area


TC10-15





15-minute parking space on Beacon St, in front of Murray's Liquors - Observations		TC10-15				
Date	Time	Vehicles parked less than 5 minutes	Vehicles parked 5 to 15 minutes	Vehicles parked 16 to 30 minutes	Vehicles parked over 30 minutes	Percent parked beyond limit
8/11/15	11AM-1PM	2	3	0	0	0%
8/14/15	11AM-1PM	0	1	2	1	75%
2/1/16	11AM-1PM	1	1	1	1	50%
2/2/16	1:30-3:30PM	3	2	0	0	0%
2/3/16	1:30-3:30PM	6	2	0	0	0%
2/4/16	11AM-1PM	3	5	1	0	11%
11/25/16	12PM-2PM	1	1	1	1	50%
11/30/16	1PM-3PM	0	0	0	2	100%
TOTAL	(16 hours)	16	15	5	5	24%

12.15.16 35 Traffic Council

Previous Actions		TC18-15
<ul style="list-style-type: none"> • Hold 6/25/15 <ul style="list-style-type: none"> • Remove parking meter in front of Murray's Liquors. • Replace with 15-minute time limit (non-metered space) 8:00 am to 6:00 pm, Monday through Saturday • Hold 2/26/16 		<p>12.15.16 36 Traffic Council</p>

TC24-16

∞ 37 ∞

Discussion of parking restrictions on Rowena Road, including the possible implementation of a one-side only parking regulation along all or part of Rowena Road

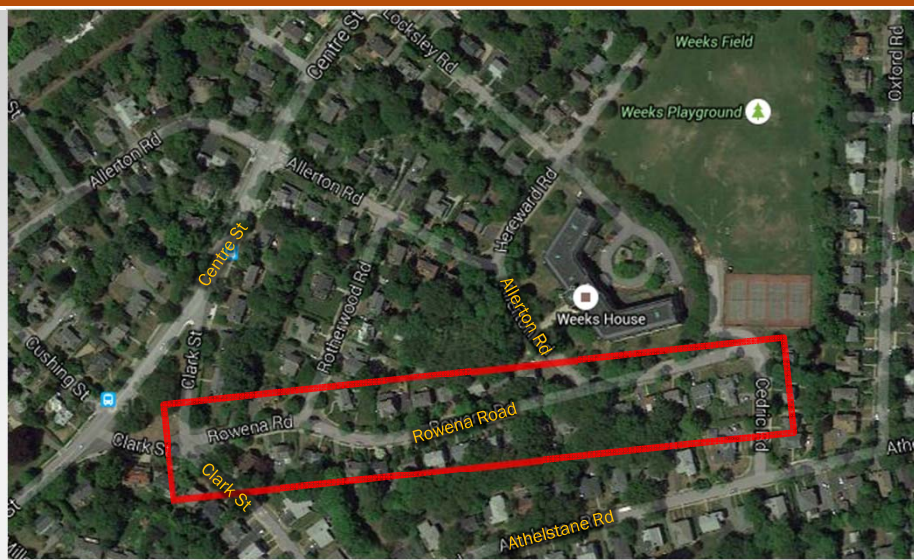
12.15.16


37

Traffic Council

Location Map


TC24-16



Site Photo: Rowena Rd looking west	TC24-16	
		
12.15.16	39	Traffic Council

Characteristics of Rowena Road	TC24-16	
<p><u>General Characteristics</u></p> <ul style="list-style-type: none"> Public Way Abuts Weeks House, Field and Playground 1,235 feet long 24 feet wide (varies between 23' and 25') <p><u>Parking Observations</u></p> <ul style="list-style-type: none"> 3 (3:30 PM Monday 07/11/16) 7 (9:30 AM Tuesday 07/12/16) 8 (4:00 PM Wednesday 07/13/16) 3 (12:30 PM Tuesday 07/19/16) <p style="margin-left: 150px;">} Evenly distributed along the length of the street</p> <p><u>Current Parking Restrictions</u></p> <ul style="list-style-type: none"> <i>"Prohibited, school days, 8:00 a.m. to 3:00 p.m., both sides, Hereward Rd to Cedric Rd"</i> (note: officially on the books but no signs are posted) <p><u>Location of Utility Poles and Hydrants</u></p> <ul style="list-style-type: none"> Utility Poles – south side Fire Hydrants – north side 		
12.15.16	40	Traffic Council

Action taken July 28, 2016	TC24-16	
<p>Hold for Trial of the following:</p> <ul style="list-style-type: none">• No Parking, South Side, Entire Length		
12.15.16	41	Traffic Council

Site Photos during Trial Period — Rowena Road, looking east	TC24-16	
		
12.15.16	42	Traffic Council

TC40-16

∞ 43 ∞

Stop sign at the intersection of Grafton, Homer and Water Streets

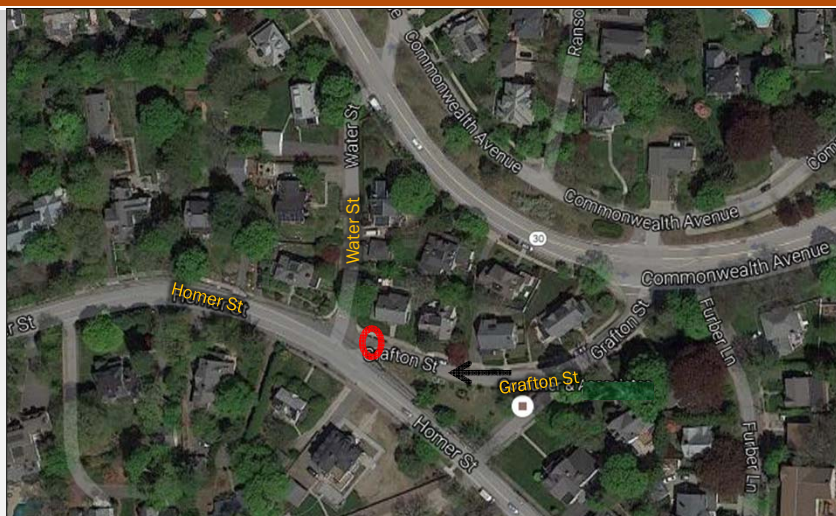
12.15.16

43

Traffic Council

Location Map: Water, Grafton and Homer

TC40-16



12.15.16

44

Traffic Council

Photo: Water St at Grafton/Homer St

TC40-16

- Stop Sign Already In Place at end of Water Street



12.15.16

45

Traffic Council

Photo: Grafton St at Water/Homer St

TC40-16


- Stop Sign NOT In Place at end of Grafton Street



12.15.16

46

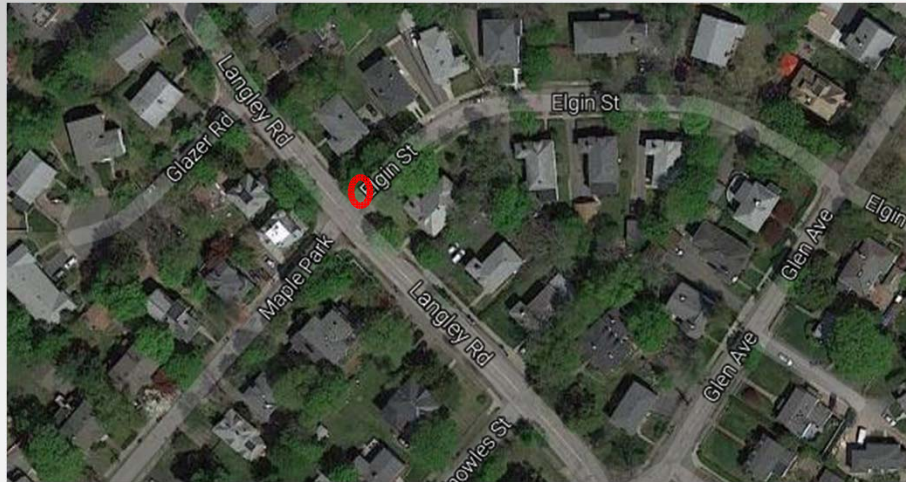
Traffic Council

<h2>Recommendations</h2>	<h2>TC40-16</h2>
<ul style="list-style-type: none">• Install a new stop sign at the intersection of Grafton Ave (Westbound) at Water St/ Homer St <div data-bbox="571 464 1011 963"></div> <p data-bbox="386 921 456 951">12.15.16</p> <p data-bbox="1117 921 1232 951">Traffic Council</p>	

<h1>TC48-16</h1> <p data-bbox="732 1570 889 1604">∞ 48 ∞</p> <p data-bbox="407 1644 1216 1677">Stop sign at Elgin Street, eastbound, at the intersection of Langley Road</p> <p data-bbox="386 1787 456 1816">12.15.16</p> <p data-bbox="797 1797 824 1827">48</p> <p data-bbox="1117 1787 1232 1816">Traffic Council</p>		

Location Map: Elgin Street at Langley Road

TC48-16



12.15.16

49

Traffic Council

Photo: Elgin Street at Langley Road

TC48-16


- Stop Sign NOT In Place at end of Elgin Street, at intersection with Langley Road



12.15.16

50

Traffic Council

<h1>Recommendations</h1>	<h1>TC48-16</h1>	
<ul style="list-style-type: none">(Approve as Amended)– Install a new stop sign at the intersection of Elgin St (Westbound) at Langley		
		
12.15.16	51	Traffic Council

<h1>TC47-16</h1> <p>∞ 52 ∞</p> <p>Adding on-street accessible parking spaces into the TPR</p>		
12.15.16	52	Traffic Council

80 53 83

Nominations, Election and Discussion of term length for Traffic Council Chair

12.15.16 53 Traffic Council