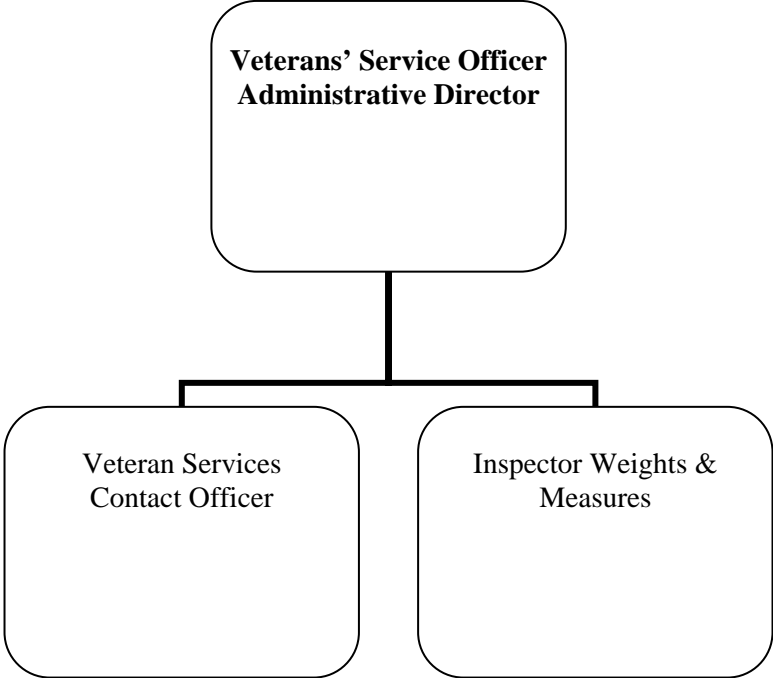


FUND: 01 – GENERAL FUND
DEPARTMENT: 240 – SEALER WEIGHTS & MEASURES



WEIGHTS AND MEASURES

DEPARTMENT DESCRIPTION

The Inspector of Weights and Measures ensures every consumer and merchant that all point of sale measuring, metering and scanning devices are continuously maintained within State standards for accuracy and correctness.

As required by statute, the inspector checks accuracy, and seals annually, all weighing and measuring devices, including laser scanners in major retail stores.

ACCOMPLISHMENTS

1. Determined that all inspections and weighing devices were accurate and sealed as required by law.
2. Expanded the price verification scanning program to several new retail stores, and educated them on the importance of correct pricing on scanned items.
3. Addressed several questions and complaints due to increased prices on products being sold, especially the recent cost on fuel.
4. Attended Division of Standards State meetings to remain certified and well informed of current changes pertaining to the laws of weights and measures.

5. Educated the proprietors of gas stations and oil companies so they would meet the new laws requiring street sign pricing to reflect correct fractional pricing and taxes included on all signage.

GOALS AND OBJECTIVES

1. Provide consumer protection for the residents and visitors to the City of Newton by ensuring the accuracy of all mechanical, electronic, and fluid weighing devices.
2. Continue a friendly business relationship with proprietors and citizens by responding in a timely manner with accurate information and visiting establishments in an ongoing regular basis to provide any corrections that may need to be addressed.
3. Provide consumers and proprietors with better accuracy and minimize any errors in pricing via the Price Verification Program. This minimization of errors provides savings to both the consumer and the proprietor.
4. To remain informed about all state laws and regulations regarding weights and measures by attending state classes to obtain CEU accreditation to remain a Certified Inspector.

FUND: 01 - GENERAL FUND
 DEPARTMENT: 240 - SEALER WEIGHTS MEASURE

**CITY OF NEWTON BUDGET
 DEPARTMENT LEGAL LEVEL OF CONTROL**

	ACTUAL 2009	ACTUAL 2010	ORIGINAL 2011	AMENDED 2011	RECOMMENDED 2012	APPROPRIATION CHANGE 2011 To 2012		
DEPARTMENT SUMMARY								
51 - PERSONAL SERVICES	63,095	65,619	66,196	66,196	66,196	0	0%	
52 - EXPENSES	2,055	1,908	3,615	3,615	2,160	-1,455	-40%	
57 - FRINGE BENEFITS	5,997	6,488	6,508	6,508	7,231	723	11%	
TOTAL DEPARTMENT	71,147	74,015	76,319	76,319	75,586	-733	-1%	
WEIGHTS/MEASURES								
51 - PERSONAL SERVICES	63,095	65,619	66,196	66,196	66,196	0	0%	
52 - EXPENSES	2,055	1,908	3,615	3,615	2,160	-1,455	-40%	
57 - FRINGE BENEFITS	5,997	6,488	6,508	6,508	7,231	723	11%	
TOTAL WEIGHTS/MEASURES	71,147	74,015	76,319	76,319	75,586	-733	-1%	

FUND: 01 - GENERAL FUND
 DEPARTMENT: 240 - SEALER WEIGHTS MEASURE

**CITY OF NEWTON BUDGET
 DEPARTMENTAL DETAIL**

	ACTUAL FY2009	ACTUAL FY2010	ORIGINAL 2011	AMENDED 2011	YTD EXPENSES 2011	RECOMMENDED 2012	APPROPRIATION CHANGE FY2011 AND FY2012		
240 - SEALER WEIGHTS & MEASURE									
0124001 - WEIGHTS/MEASURES									
PERSONAL SERVICES									
511001	FULL TIME SALARIES	61,874	63,120	63,121	63,121	48,851	63,121	0	0%
514001	LONGEVITY	0	0	575	575	575	575	0	0%
514399	ADMIN SUPPORT STIPEND	1,221	2,500	2,500	2,500	1,942	2,500	0	0%
TOTAL PERSONAL SERVICES		63,095	65,619	66,196	66,196	51,369	66,196	0	0%
EXPENSES									
52403	MOTOR VEHICLE R-M	0	0	645	480	0	0	-480	-100%
53401	TELEPHONE	81	82	250	250	51	85	-165	-66%
53403	BEEPERS	9	0	95	95	0	0	-95	-100%
5341	POSTAGE	9	5	15	15	2	0	-15	-100%
5342	PRINTING	1	21	20	20	0	0	-20	-100%
5420	OFFICE SUPPLIES	49	0	20	20	0	0	-20	-100%
5432	SMALL TOOLS	407	685	750	750	668	750	0	0%
5480	GASOLINE	1,282	694	705	705	389	600	-105	-15%
5482	TIRES & TIRE SUPPLIES	0	0	245	245	0	0	-245	-100%
5484	VEHICLE REPAIR PARTS	0	0	120	120	0	0	-120	-100%
5580	PUBLIC SAFETY SUPPLIES	0	318	400	400	0	400	0	0%
5581	UNIFORMS/PROTECTIVE	90	0	100	165	155	100	-65	-39%
5711	IN-STATE CONFERENCES	73	35	135	235	160	150	-85	-36%
5730	DUES & SUBSCRIPTIONS	55	70	115	115	15	75	-40	-35%
TOTAL EXPENSES		2,055	1,908	3,615	3,615	1,440	2,160	-1,455	-40%
FRINGE BENEFITS									
57DENTAL	DENTAL INSURANCE	148	148	148	148	116	177	29	20%
57HLTH	HEALTH INSURANCE	4,905	5,342	5,343	5,343	4,212	6,037	694	13%
57LIFE	BASIC LIFE INSURANCE	57	57	57	57	42	57	0	0%
57MEDA	MEDICARE PAYROLL TAX	887	941	960	960	737	960	0	0%
TOTAL FRINGE BENEFITS		5,997	6,488	6,508	6,508	5,109	7,231	723	11%

CITY OF NEWTON BUDGET DEPARTMENTAL DETAIL
--

	ACTUAL FY2009	ACTUAL FY2010	ORIGINAL 2011	AMENDED 2011	YTD EXPENSES 2011	RECOMMENDED 2012	APPROPRIATION CHANGE FY2011 AND FY2012	
TOTAL WEIGHTS/MEASURES	71,147	74,015	76,319	76,319	57,918	75,586	-733	-1%
TOTAL SEALER WEIGHTS & MEASURE	71,147	74,015	76,319	76,319	57,918	75,586	-733	-1%

FUND: 01 - GENERAL FUND
 DEPARTMENT: 240 - SEALER WEIGHTS MEASURE

**CITY OF NEWTON BUDGET
 PERSONAL SERVICES SUMMARY**

ACCOUNT	POSITION TITLE	RANGE	FTE	2011 SALARY	FTE	2012 SALARY
511001	Inspec/Weights+Measures	H06	1	63,121	1	63,121
Account Totals:			1	63,121	1	63,121
Report Totals:			1	63,121	1	63,121