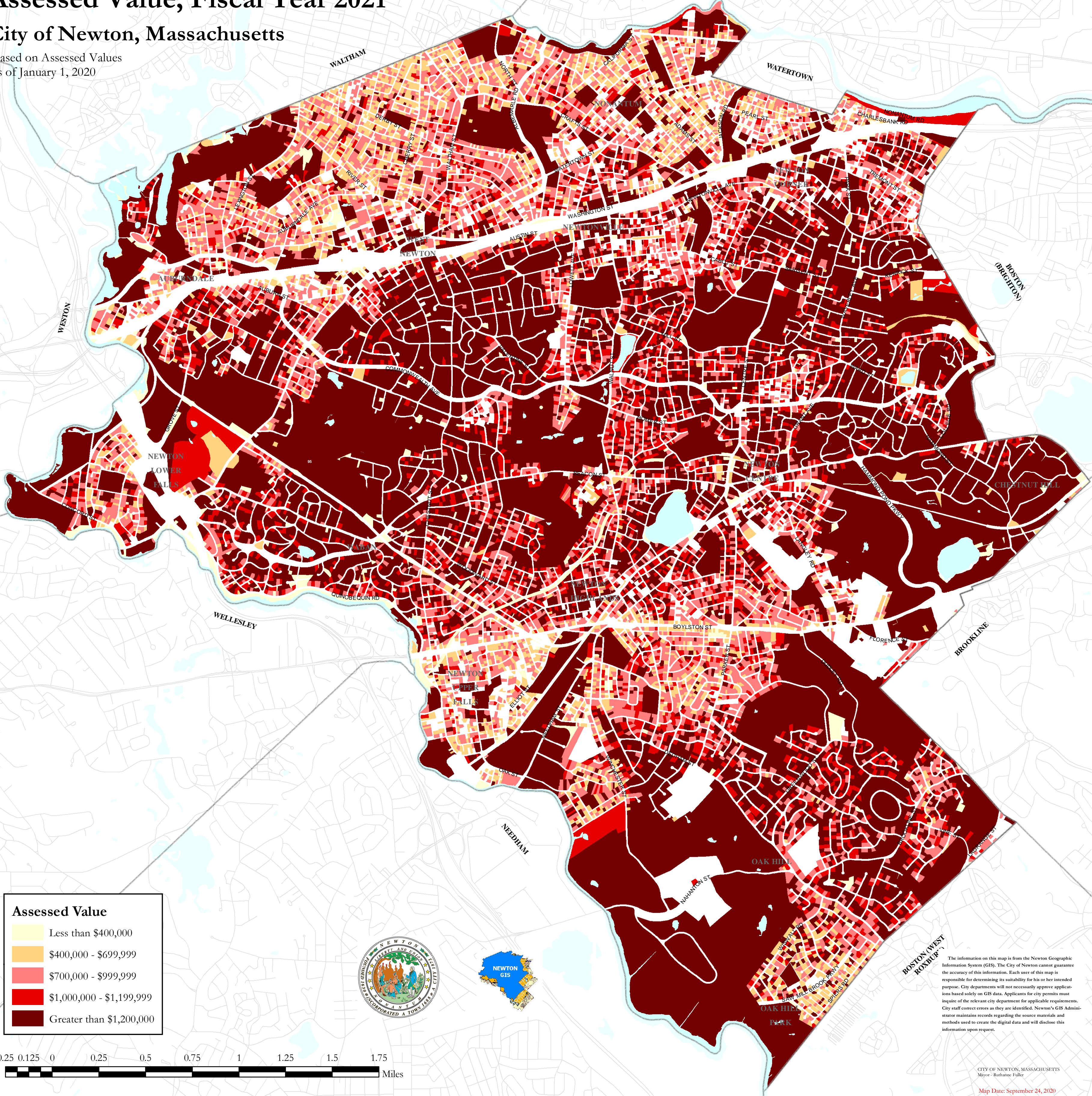


Assessed Value, Fiscal Year 2021

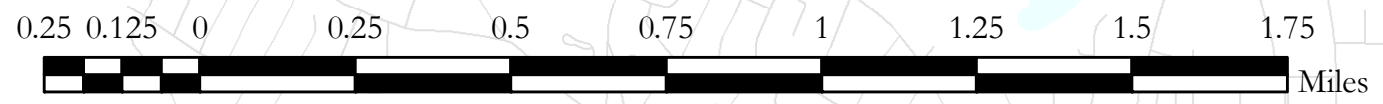
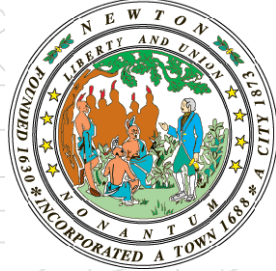
City of Newton, Massachusetts

Based on Assessed Values
as of January 1, 2020



Assessed Value

- Less than \$400,000
- \$400,000 - \$699,999
- \$700,000 - \$999,999
- \$1,000,000 - \$1,199,999
- Greater than \$1,200,000



The information on this map is from the Newton Geographic Information System (GIS). The City of Newton cannot guarantee the accuracy of this information. Each user of this map is responsible for determining its suitability for his or her intended purpose. City departments will not necessarily approve applications based solely on GIS data. Applicants for city permits must inquire of the relevant city department for applicable requirements. City staff correct errors as they are identified. Newton's GIS Administrator maintains records regarding the source materials and methods used to create the digital data and will disclose this information upon request.