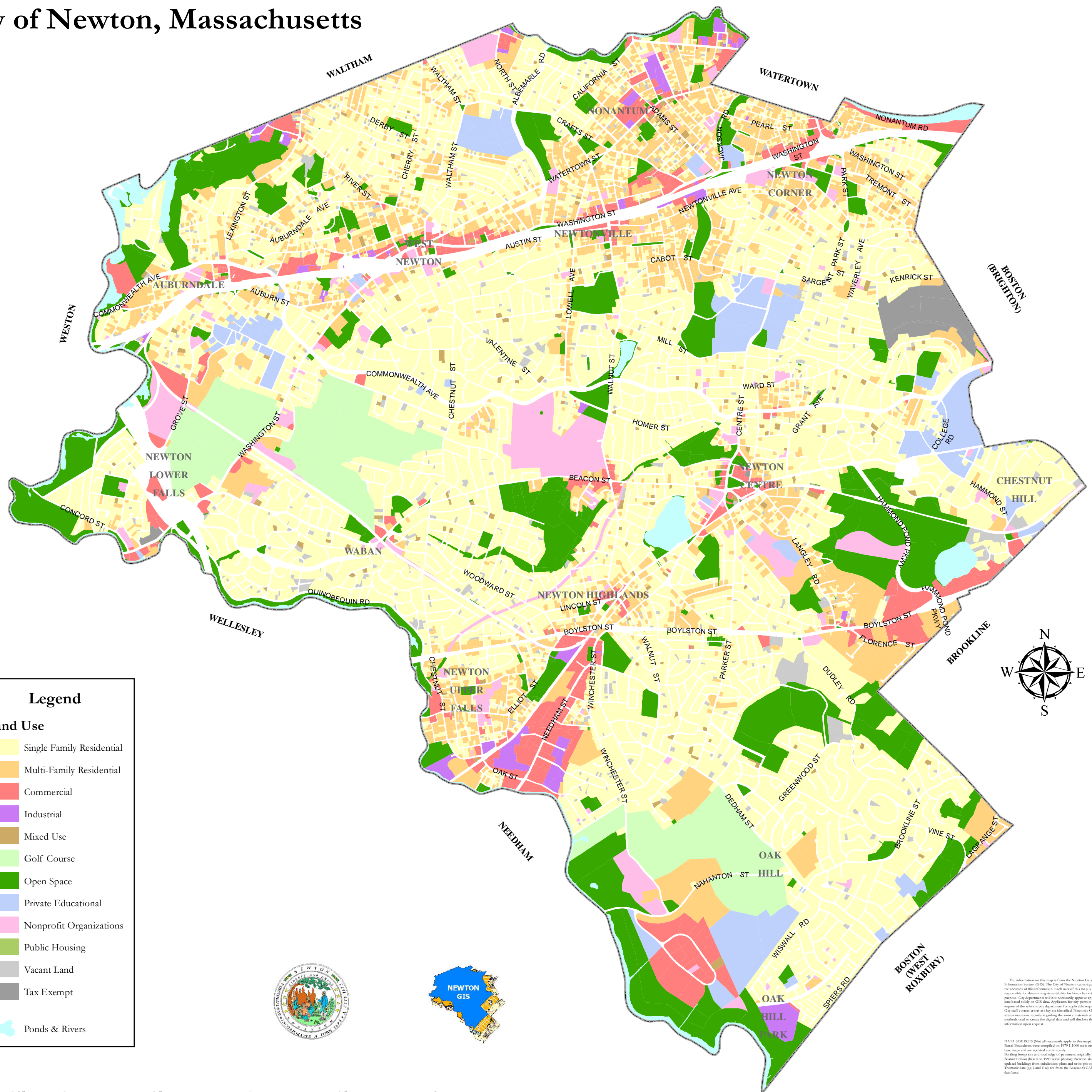


# Land Use

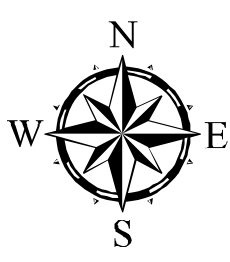
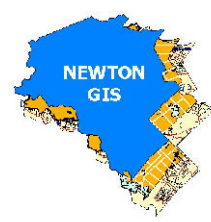
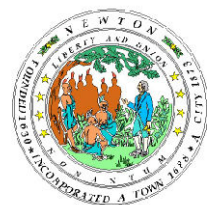
## City of Newton, Massachusetts



**Legend**

**Land Use**

- Single Family Residential
- Multi-Family Residential
- Commercial
- Industrial
- Mixed Use
- Golf Course
- Open Space
- Private Educational
- Nonprofit Organizations
- Public Housing
- Vacant Land
- Tax Exempt
- Ponds & Rivers



This information on this map is from the Newton Geographic Information System (GIS). The City of Newton cannot guarantee the accuracy of this information. Each user of this map is responsible for determining its suitability for his or her intended purpose. City departments will not necessarily approve applications based solely on GIS data. Applicants for any permits must acquire the relevant city department for applicable requirements. City staff correct errors as they are identified. Newton's GIS Administrator maintains records regarding the source materials and methods used to create the digital data and will disclose the information upon request.

**DATA SOURCES:** Not all necessarily apply to this map:  
 City of Newton GIS  
 City of Boston GIS  
 Building footprints and real estate data from Esri  
 Boston Edition (based on 1991 aerial photos); Newton staff have updated buildings from satellite photos and orthorectified imagery  
 Thematic data (e.g. Land Use) are from the Assessor's CAMA data base.