



**Happy 10th Birthday, Newton CPA!**

[www.newtonma.gov/cpa](http://www.newtonma.gov/cpa)

## **NEWTON'S HISTORIC STREAMS & WETLANDS**

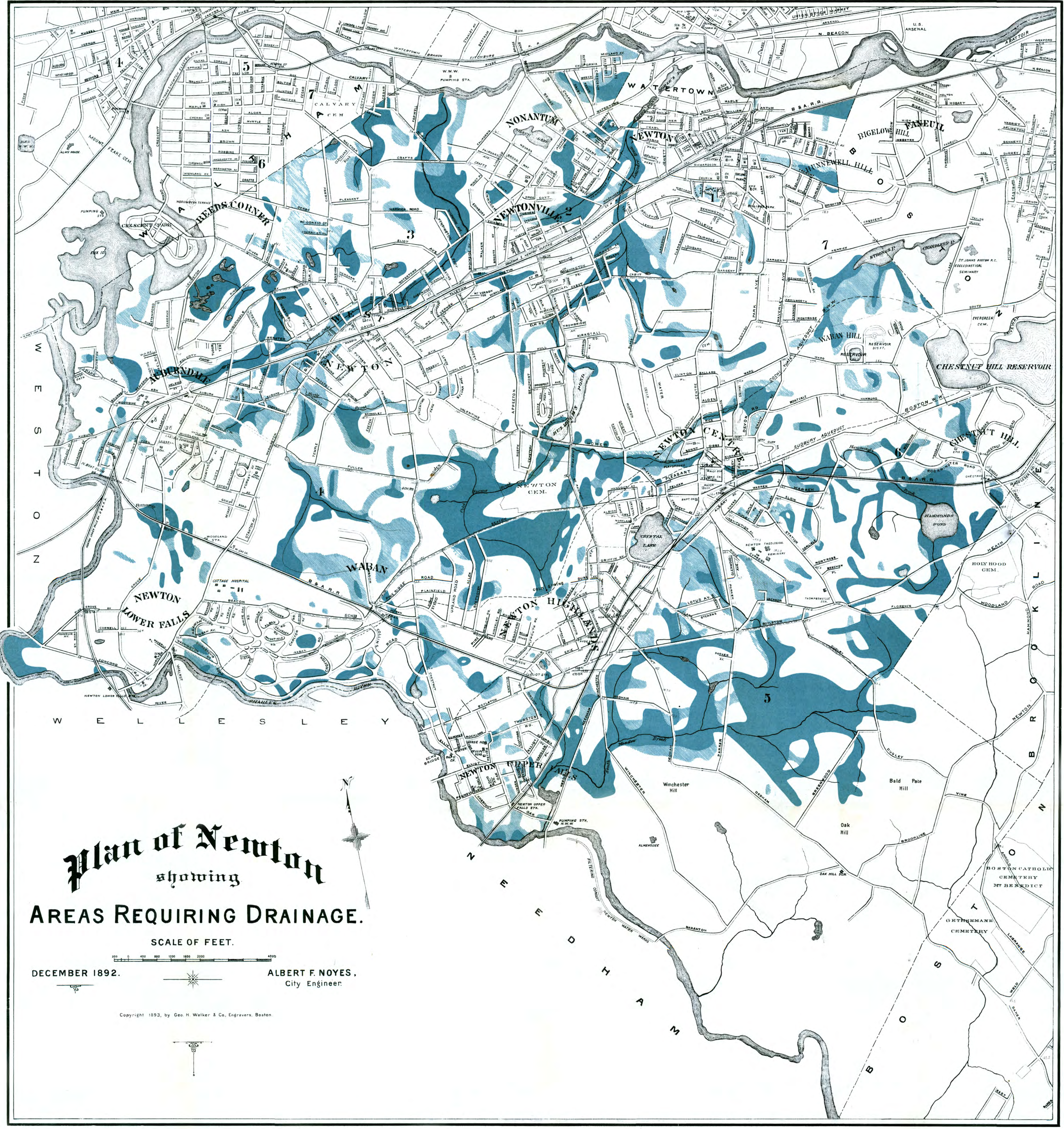
Since 1892, when this map was made, Newton has put many of its historic streams into underground culverts and drained or filled most of its wetlands. This made more of the City's land developable, but it also reduced the land's capacity to store & channel stormwater.

Large storms can overwhelm the engineered systems that we substituted for older, natural ones. So in some ways, this is the "1892 map of the 2010 floods."

Page down for map.

Enlarge with Adobe % tool to see details.



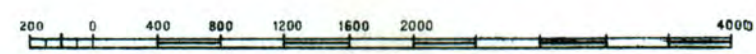


# Plan of Newton

showing

## AREAS REQUIRING DRAINAGE.

SCALE OF FEET.



DECEMBER 1892.

ALBERT F. NOYES,  
City Engineer.

Copyright 1893, by Geo. H. Walker & Co., Engravers, Boston.