

Newton

Social Vulnerability

Social vulnerability refers to social, economic, demographic, or health factors that may make groups of people less resilient to climate change impacts. Certain vulnerabilities tend to be correlated; for example, older adults are more likely to have a disability and live alone than younger adults.

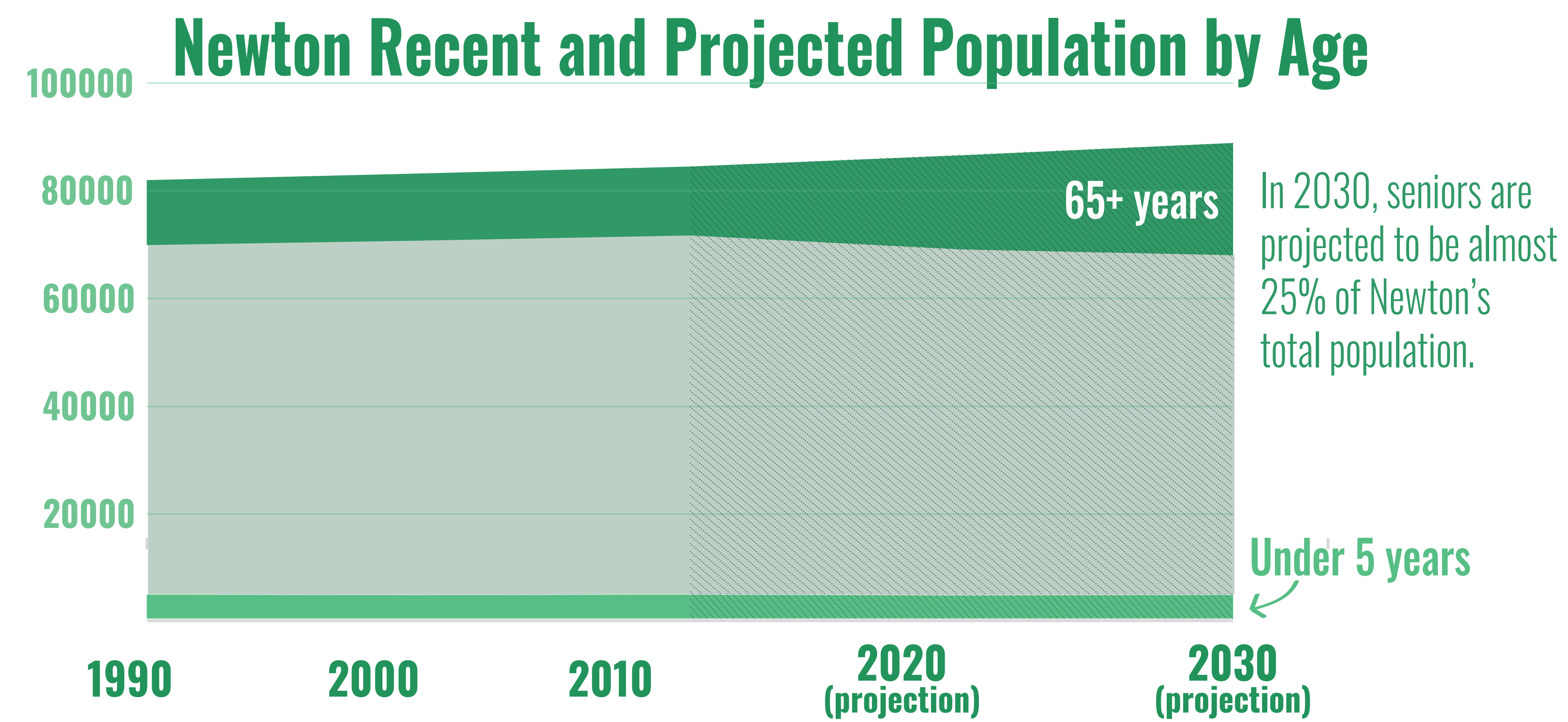
Who is most at risk from climate change impacts?

People who may be more susceptible to negative health effects: These can include older adults, young children, pregnant women, people with disabilities, and people with pre-existing health conditions, as they are more likely to be physically vulnerable to the health impacts of extreme heat and poor air quality. Individuals with physical mobility constraints, such as people with disabilities and seniors, may need additional assistance with emergency response.

People who may have more difficulty adapting to, preparing for, or recovering from extreme weather events: Socioeconomic characteristics such as income and race can influence vulnerability to climate change. Low-income people are often more susceptible to financial shocks, which can occur after extreme weather and which can impact financial security and the ability to secure safe shelter, access sufficient food, and meet medical needs. Social isolation can also influence vulnerability, as it limits access to critical information, municipal resources, and social support systems. People at the most risk for social isolation include those living alone and people with limited English language proficiency.

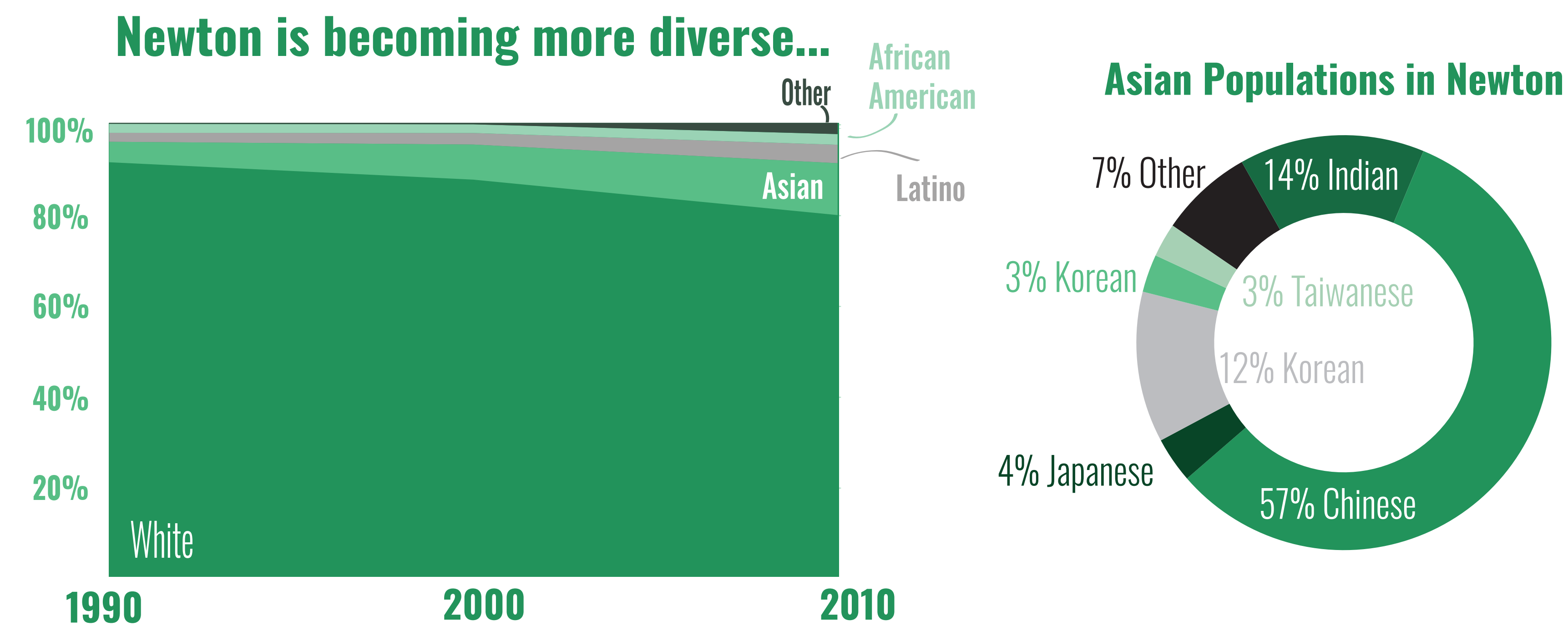
People who live or work in vulnerable locations: Historic or predicted floodplain, urban flooding locations, areas prone to wildfire, heat islands, neighborhoods prone to power outages. Outdoor workers, first responders, those working in hot indoor environments.

Older Adults and Young Children

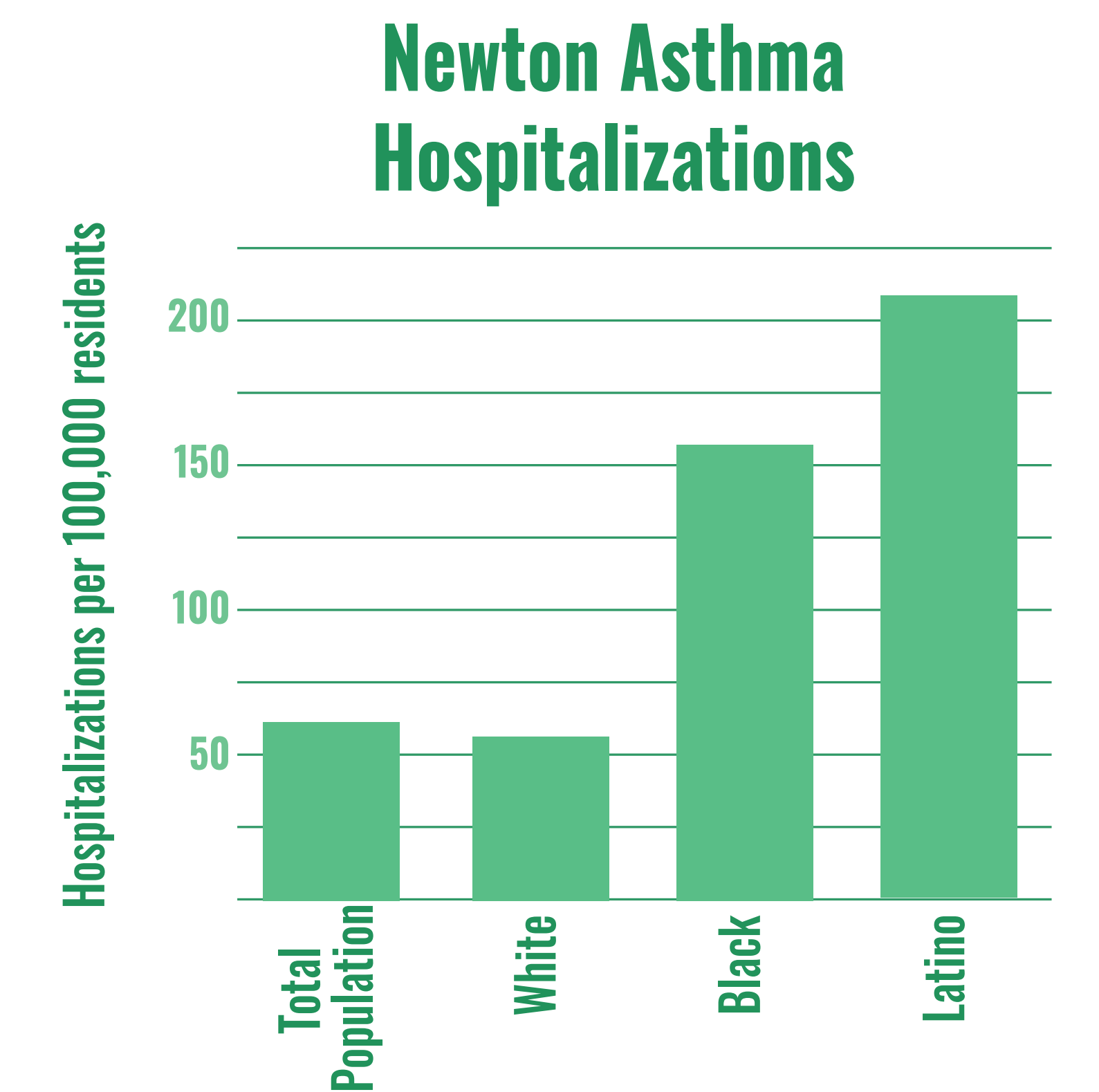


Communities of Color

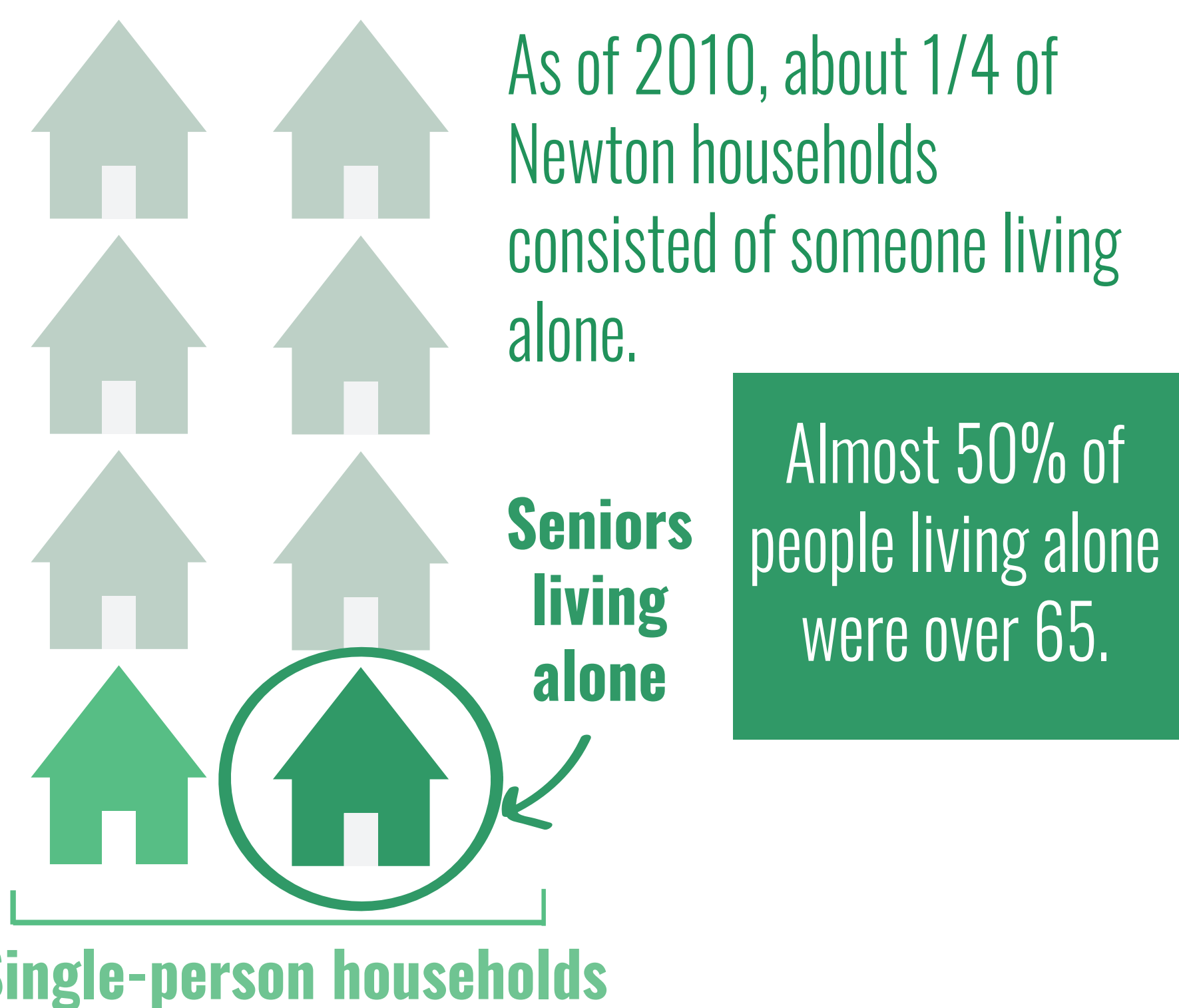
Particular racial or ethnic groups may also be more likely to have certain social vulnerabilities than others. For example, Black and Latino residents have a much higher rate of asthma hospitalizations than white residents.



People with Health Conditions



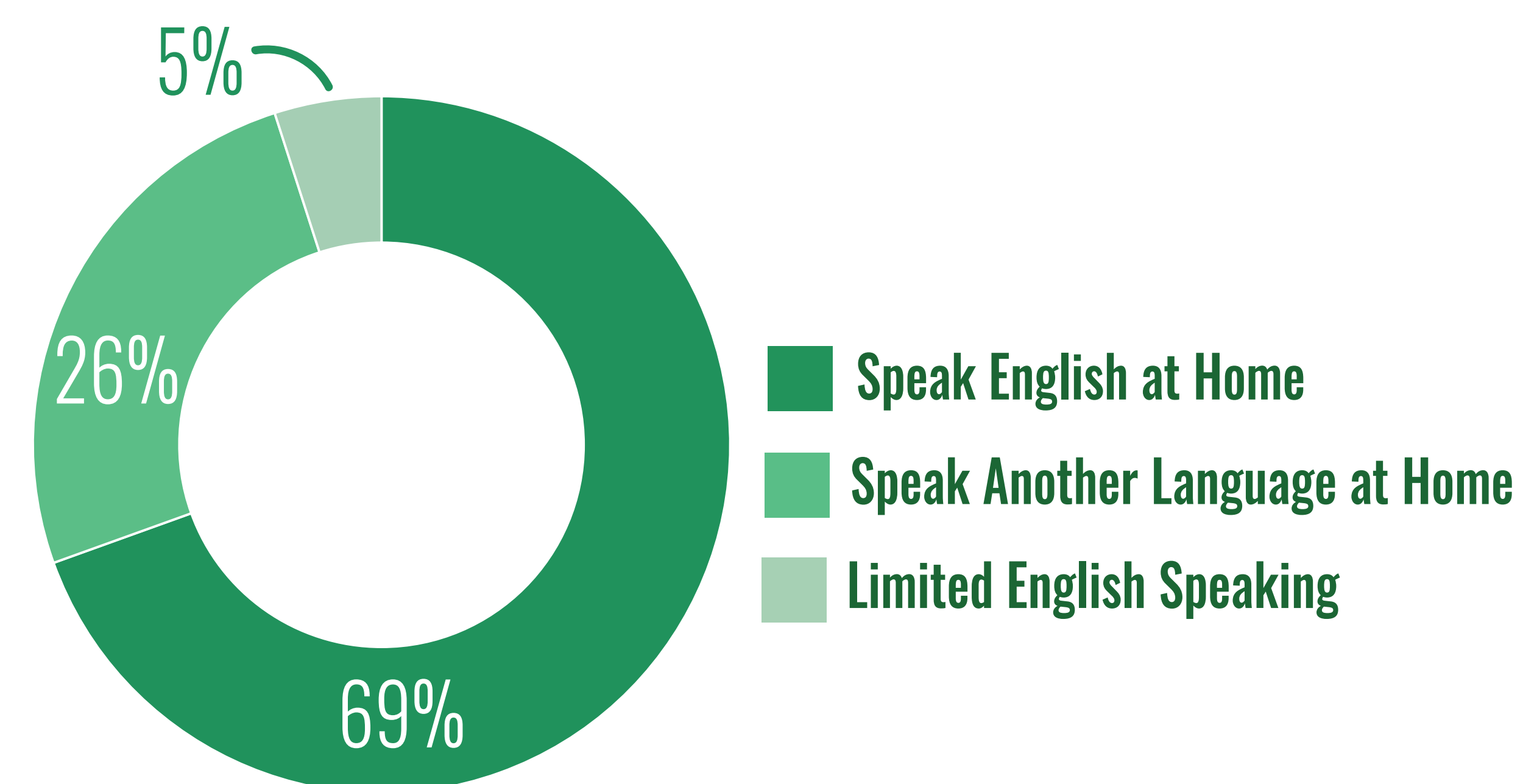
People Living Alone



People Who Work Outside



Limited English Speakers



Low-Income Households

