

# Newton Highlands Green Line Station Accessibility Project



## **PUBLIC INFORMATIONAL MEETING**

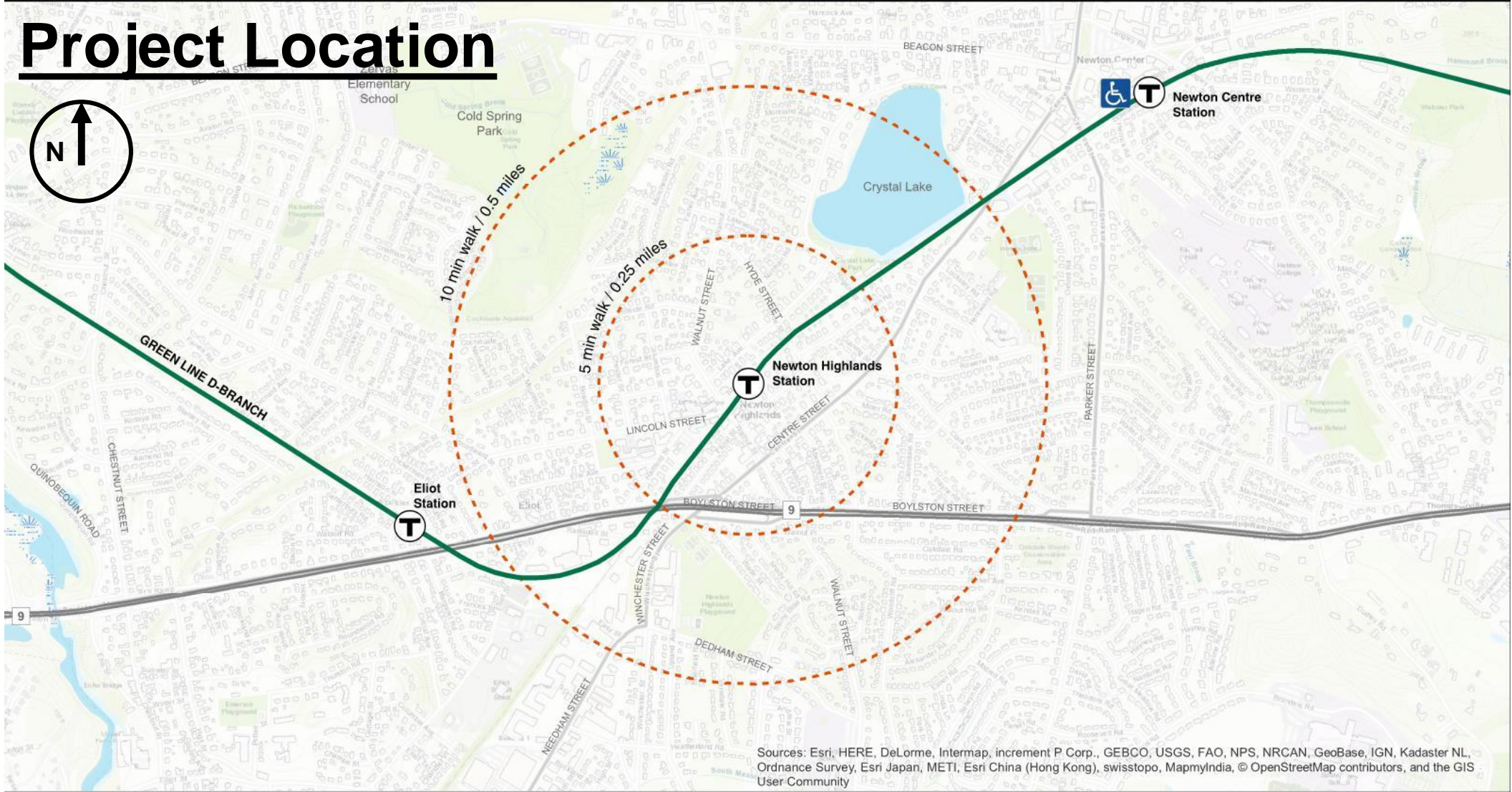
November 15, 2018

# Project Goals and Objectives

**The Massachusetts Bay Transportation Authority (MBTA) will improve accessibility at the Newton Highlands Station that will provide access for all customers and will be in compliance with current State and Federal regulations.**



# Project Location



Data Source: MassGIS  
Nitsch Project #9804.6

Sources: Esri, HERE, DeLorme, Intermap, increment P Corp., GEBCO, USGS, FAO, NPS, NRCAN, GeoBase, IGN, Kadaster NL, Ordnance Survey, Esri Japan, METI, Esri China (Hong Kong), swisstopo, MapmyIndia, © OpenStreetMap contributors, and the GIS User Community



## Newton Highlands Green Line Station Accessibility Project

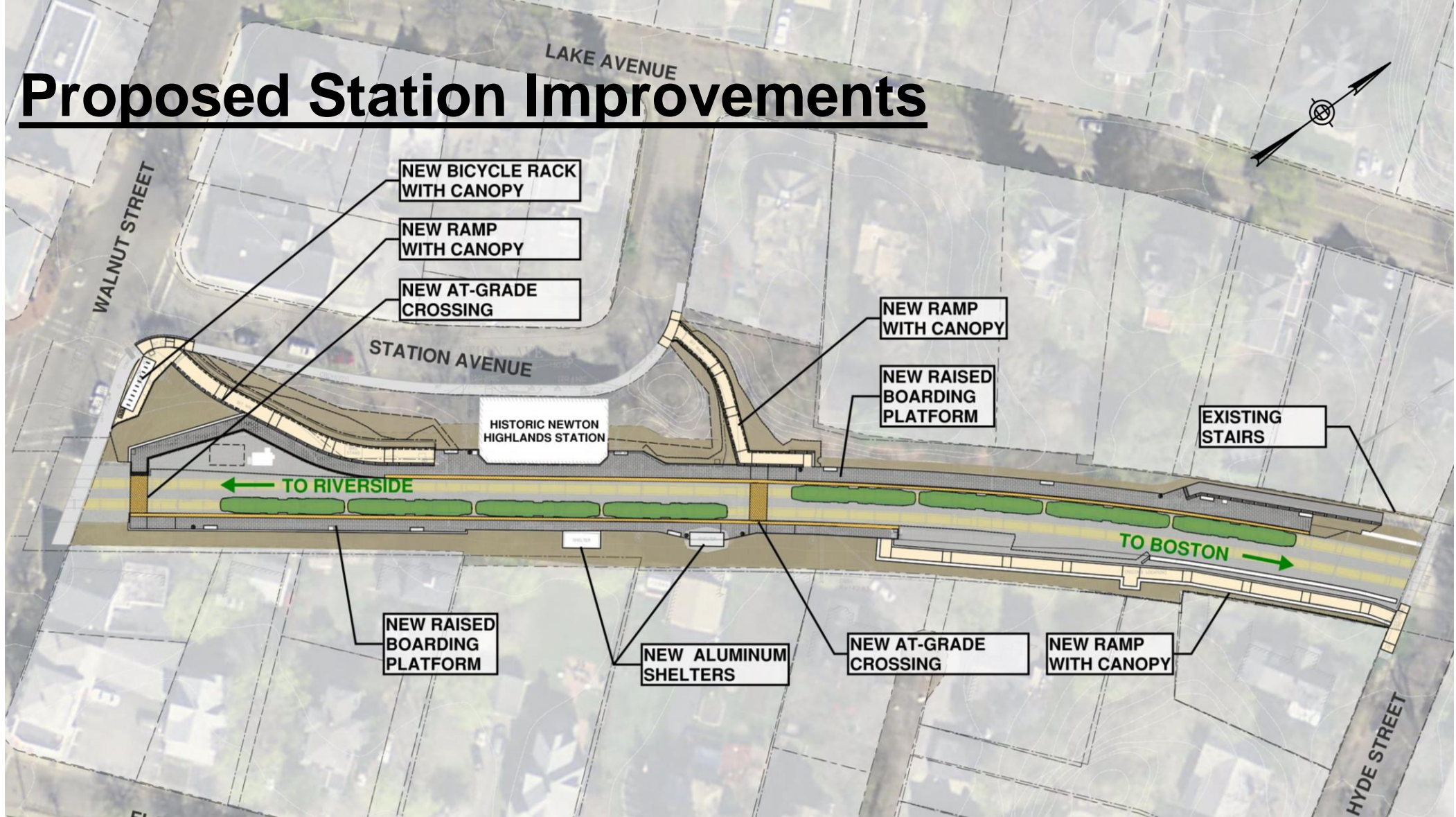


# **Proposed Station Improvements**

- **Install and maintain temporary accessible ramp from Walnut Street until permanent ramps are built at other locations.**
- **New MAAB/ADA compliant ramps from Walnut Street, Station Avenue, and Hyde Street with canopies.**
- **Raised platforms with detectable warning strip designed to accommodate Type 10 vehicles.**
- **New aluminum shelters on Inbound Platform.**
- **New station amenities, such as benches, trash receptacles.**
- **New bicycle rack with canopy on Walnut Street.**
- **New station lighting.**
- **Two new 10-foot wide “At-Grade” Track Crossings.**
- **New Wayfinding Signage**
- **New Automatic Fare Collection Equipment**



# Proposed Station Improvements



Newton Highlands Green Line Station Accessibility Project

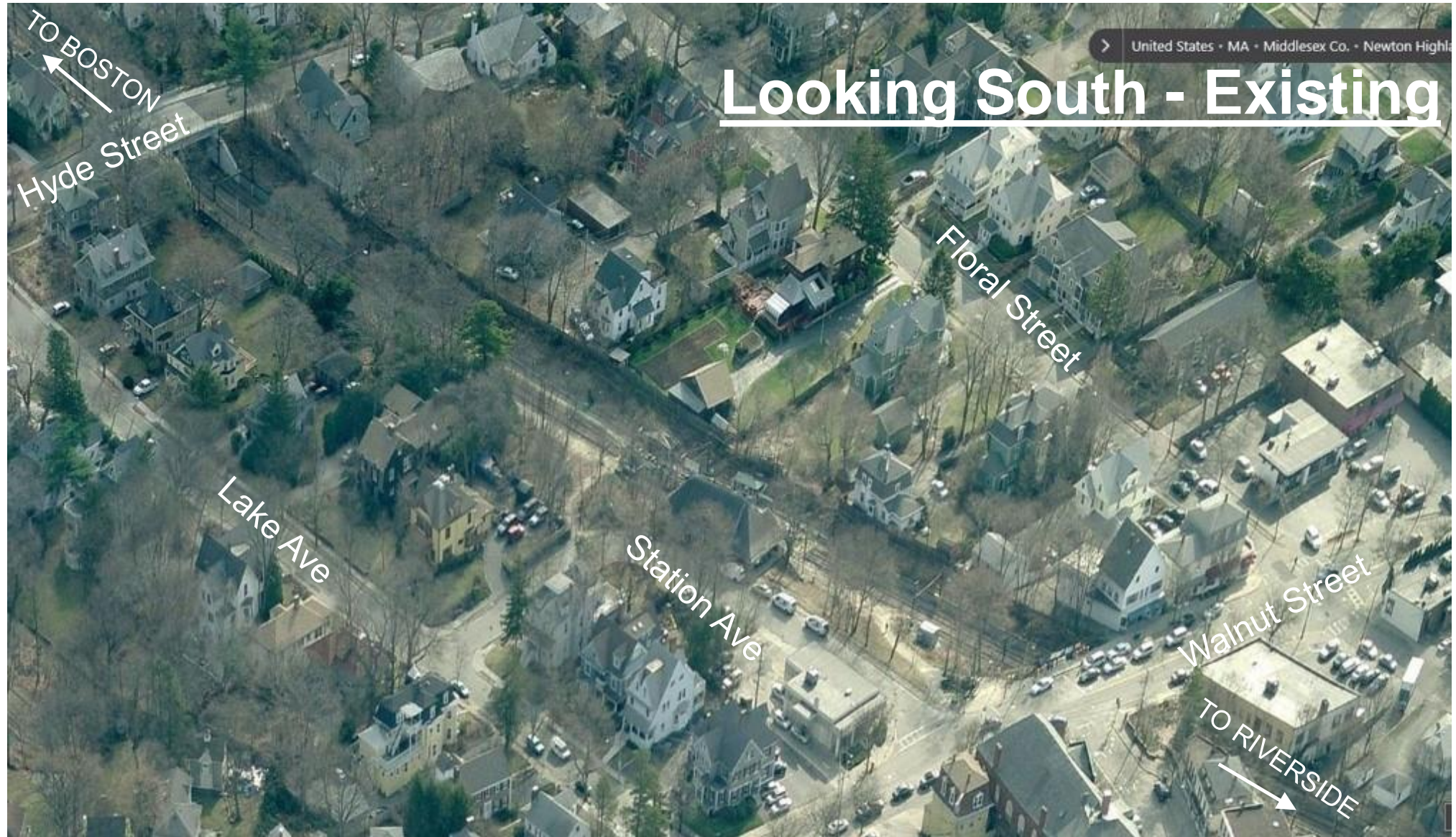


# Looking North - Existing



Newton Highlands Green Line Station Accessibility Project





# Newton Highlands Green Line Station Accessibility Project



# Looking from Walnut Street - Existing



**Newton Highlands Green Line Station Accessibility Project**





# Looking from Walnut Street - Proposed



Newton Highlands Green Line Station Accessibility Project



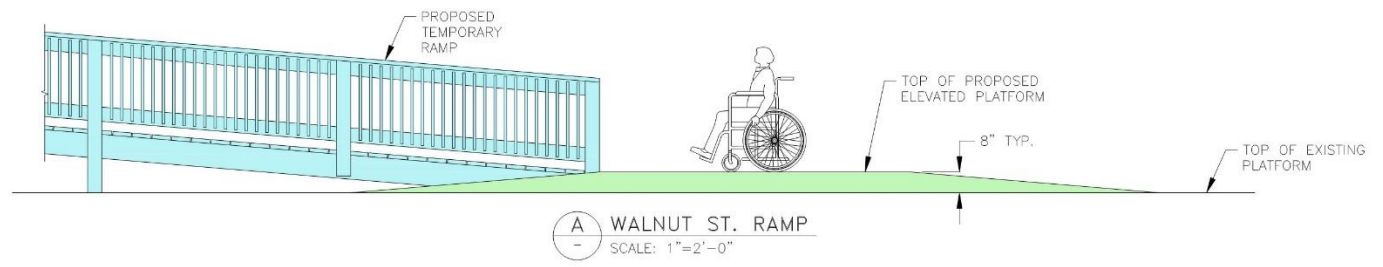
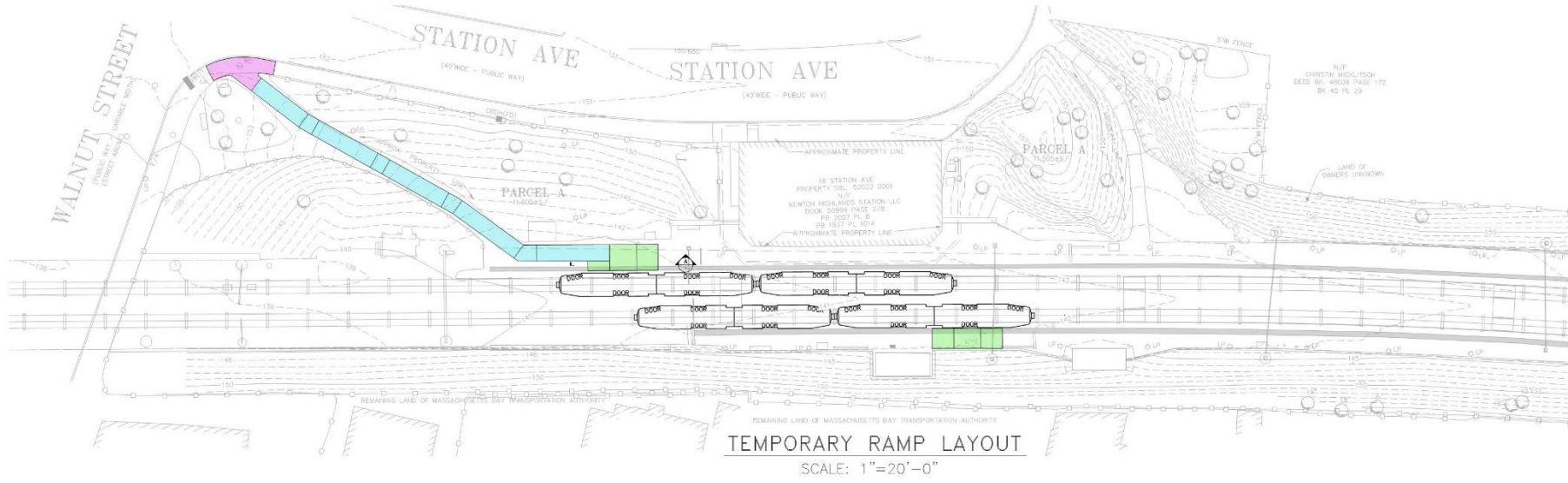
# Looking towards Walnut Street - Existing



Newton Highlands Green Line Station Accessibility Project

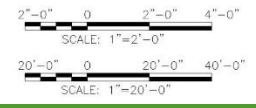


# Temporary Walnut Street Ramp



**LEGEND:**

- TEMPORARY RAMP
- ELEVATED PLATFORM
- ASPHALT LANDING/SIDEWALK



# Looking towards Walnut Street - Proposed



Newton Highlands Green Line Station Accessibility Project



# Looking towards Hyde Street - Existing



Newton Highlands Green Line Station Accessibility Project



# Looking towards Hyde Street - Proposed



Newton Highlands Green Line Station Accessibility Project



# Looking from Station Avenue - Existing



Newton Highlands Green Line Station Accessibility Project



# Looking from Station Avenue - Proposed



Newton Highlands Green Line Station Accessibility Project





Looking from Hyde Street - Existing



Newton Highlands Green Line Station Accessibility Project



# Looking from Hyde Street - Proposed



Newton Highlands Green Line Station Accessibility Project



# **Project Schedule and Cost**

- **Current Design Stage: 75%**
- **Final Design Completion - Spring 2019**
- **Timing of Construction - Option to construct concurrently with the Riverside Track and Signal Project or wait until the completion of the Riverside Track and Signal Project.**
- **Scheduling construction of Newton Highlands Station after the completion of the Riverside Track and Signal Project may reduce the construction duration and cost.**
- **Project Construction Estimate \$ 16.9 Million**
- **Additional Funding will be required.**



# QUESTIONS / COMMENTS

<https://www.mbta.com/projects/newton-highlands-station-accessibility-improvements>

Thomas Rovero Project Manager – MBTA  
[trovero@mbta.com](mailto:trovero@mbta.com)

Newton Highlands Green Line Station Accessibility Project

