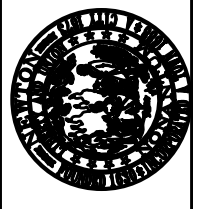
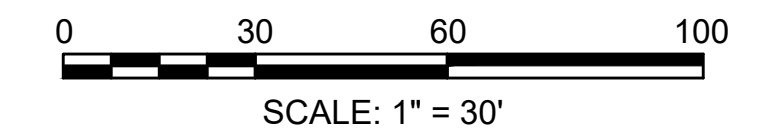


DESIGNED BY: J. PRIZANT
 CHECKED BY: J. PRIZANT
 APPROVED BY: J. SOBEL

CITY OF NEWTON
 MASSACHUSETTS

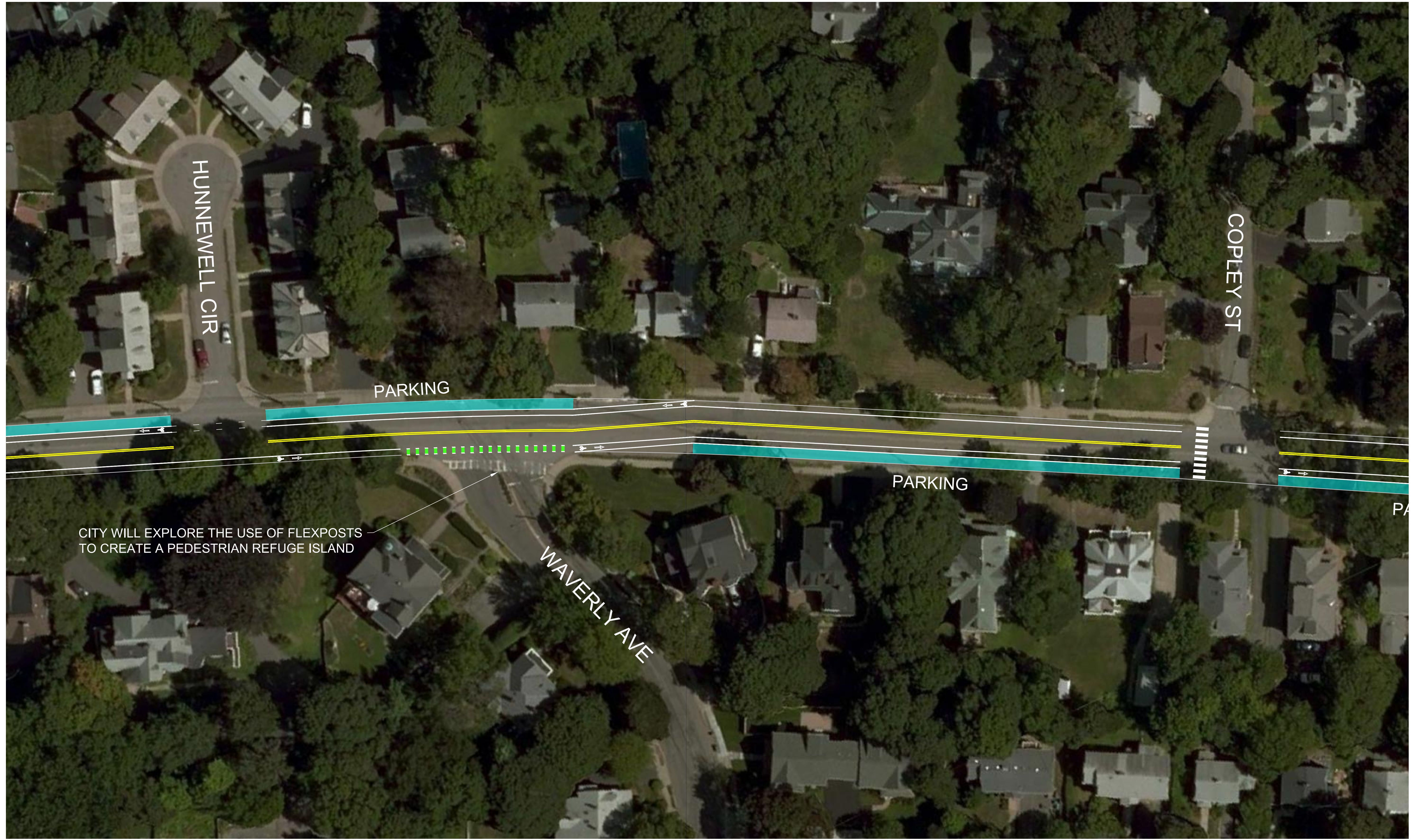
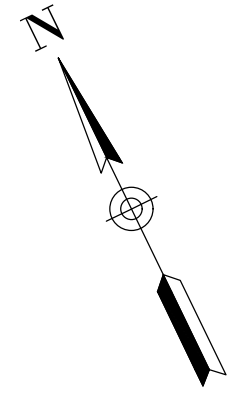


SURVEYED BY:
 BASE MAP DRAFTED BY:



CITY OF NEWTON
 MASSACHUSETTS
 CONCEPT PLAN
 FOR THE
 STRIPING
 ON
 WASHINGTON STREET
 (FROM ST. JAMES CIRCLE TO CITY LINE)

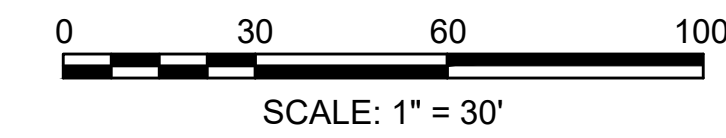
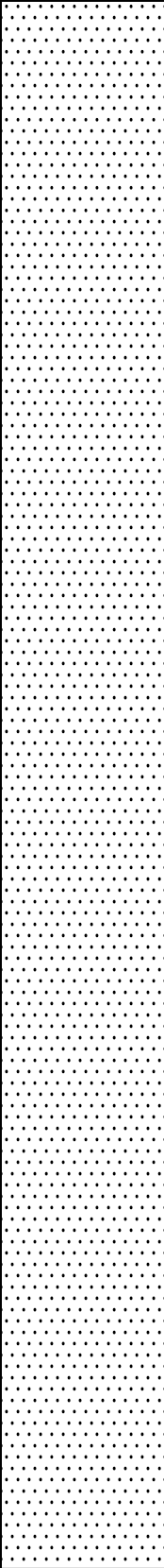
PAGE 01 OF 03 Jason Sobel, P.E., P.T.O.E. DATE: 2/14/19



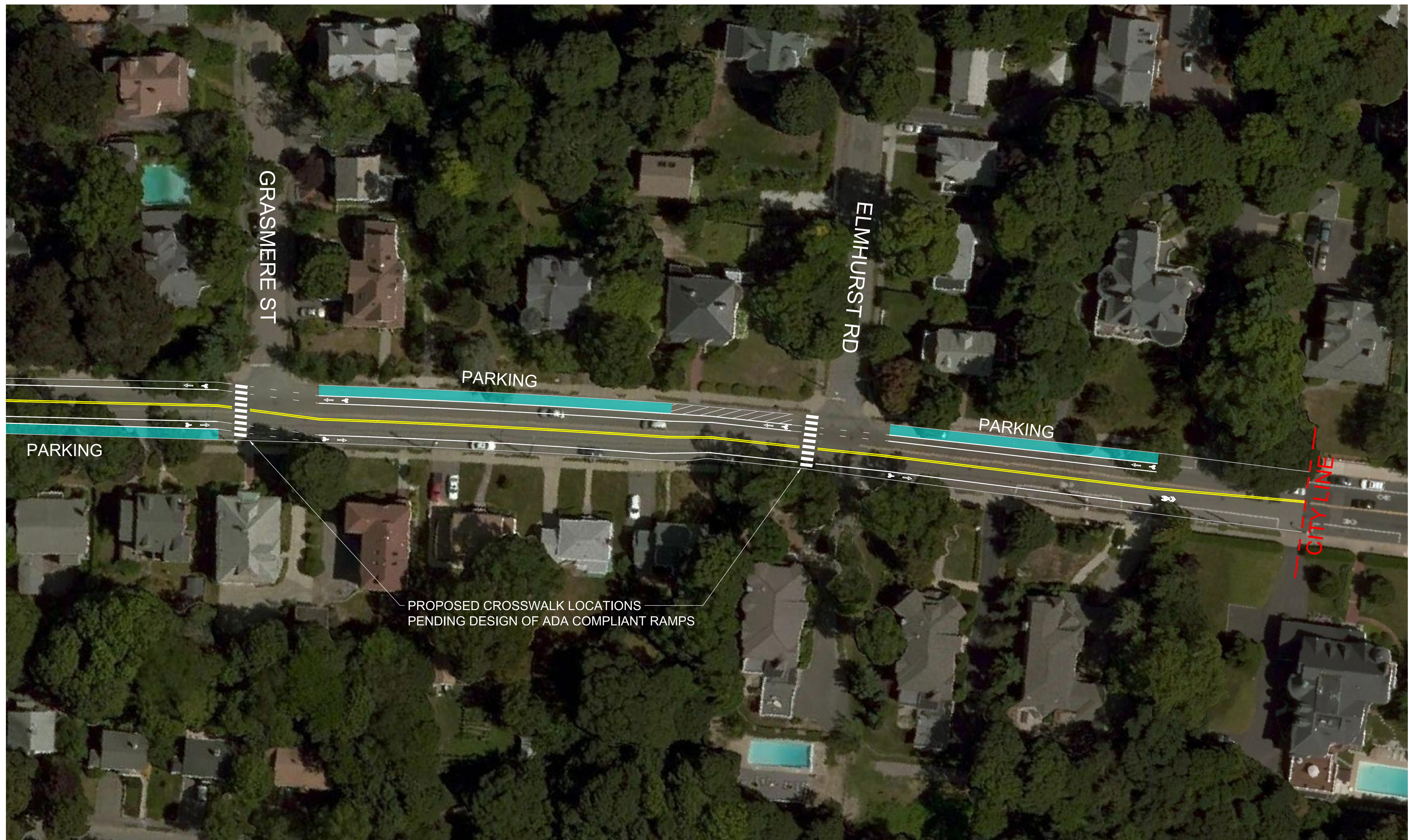
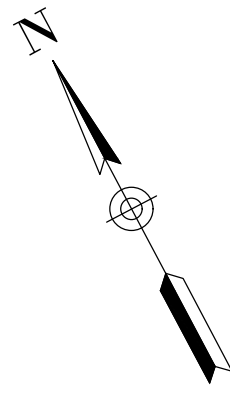
CITY WILL EXPLORE THE USE OF FLEXPOSTS TO CREATE A PEDESTRIAN REFUGE ISLAND

DESIGNED BY: J. PRIZANT
CHECKED BY: J. PRIZANT
APPROVED BY: J. SOBEL

CITY OF NEWTON
MASSACHUSETTS

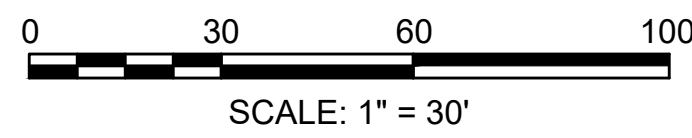
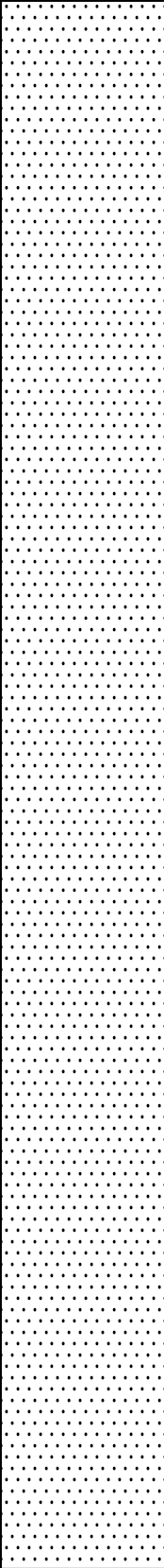


CITY OF NEWTON
MASSACHUSETTS
CONCEPT PLAN
FOR THE
STRIPING
ON
WASHINGTON STREET
(FROM ST. JAMES CIRCLE TO CITY LINE)
PAGE 01 OF 03 Jason Sobel, P.E., P.T.O.E. DATE: 2/14/19



DESIGNED BY: J. PRIZANT
 CHECKED BY: J. PRIZANT
 APPROVED BY: J. SOBEL

CITY OF NEWTON
 MASSACHUSETTS



CITY OF NEWTON
 MASSACHUSETTS
 CONCEPT PLAN
 FOR THE
 STRIPING
 ON
 WASHINGTON STREET
 (FROM ST. JAMES CIRCLE TO CITY LINE)

PAGE 01 OF 03 Jason Sobel, P.E., P.T.O.E. DATE: 2/14/19