

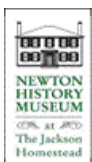
A Walk Through Time along Cheesecake Brook

sponsored by the Newton Conservators & Newton History Museum

25 June 2006

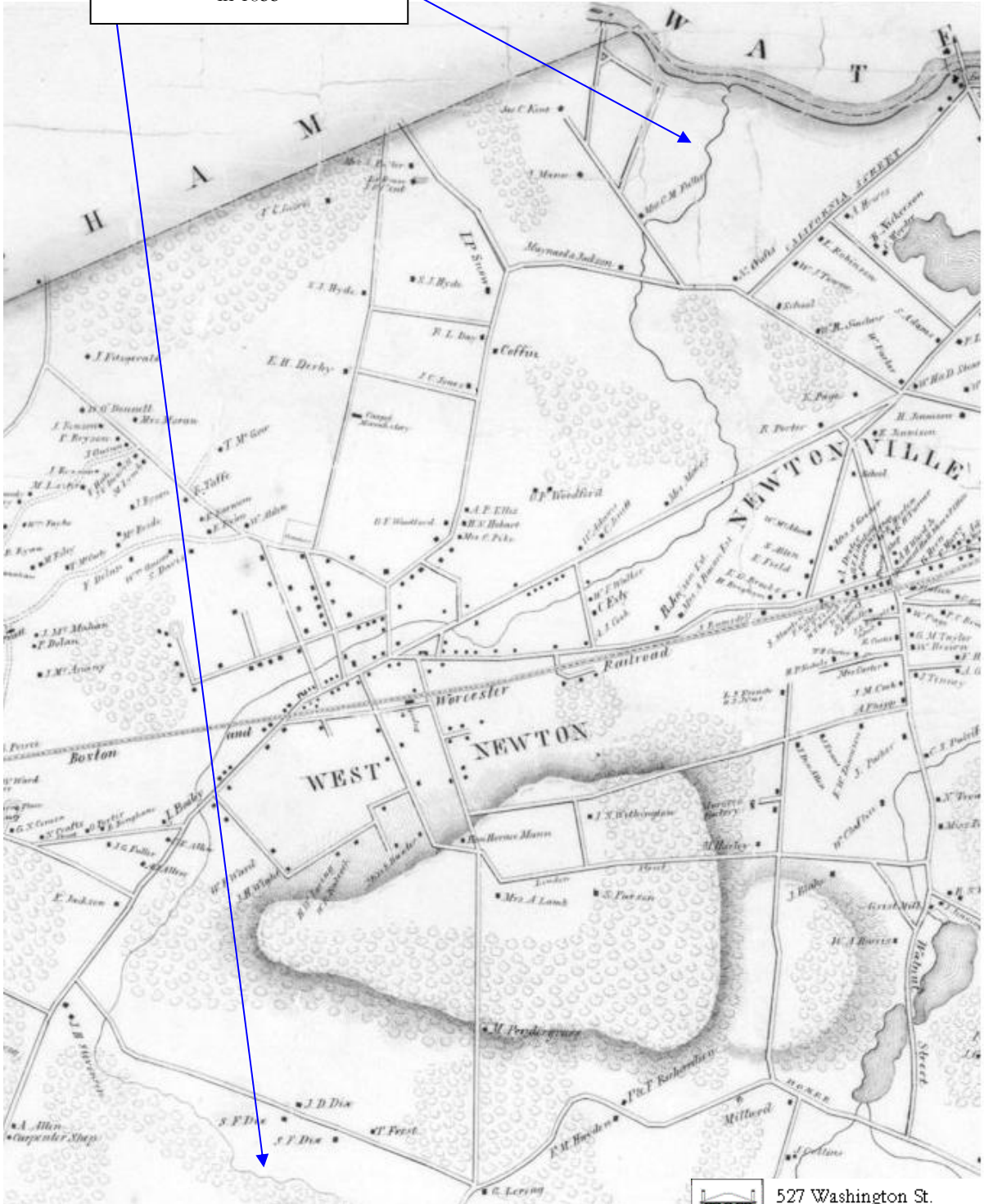


photo from *Some Newtonville Homes*
pub'd 1913



527 Washington St.
Newton, MA 02458
617.796.1450
newtonhistorymuseum@lycos.com
www.newtonhistorymuseum.org

Cheesecake Brook
in 1855



527 Washington St.
Newton, MA 02458
617.796.1450
newtonhistorymuseum@lycos.com
www.newtonhistorymuseum.org

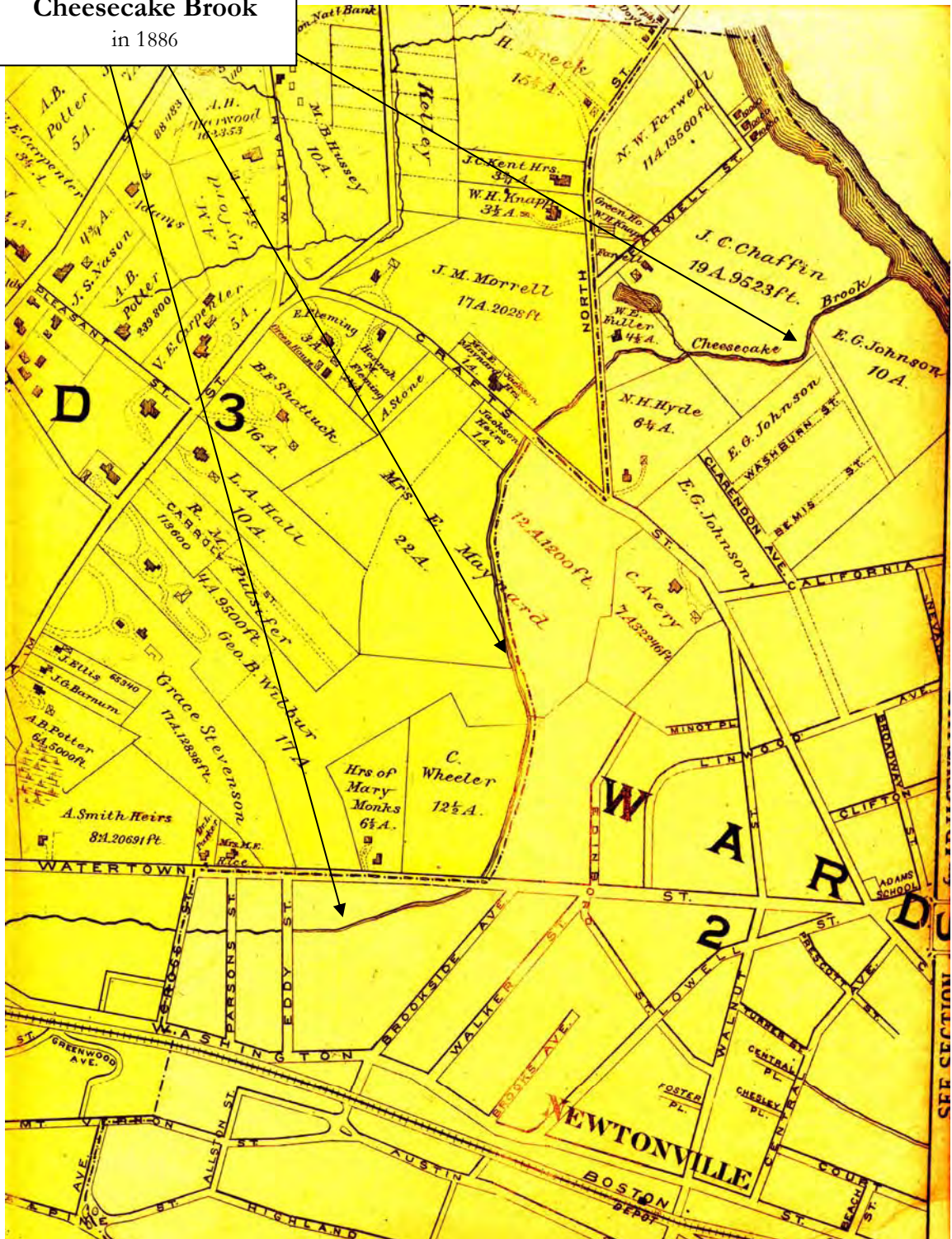
Cheesecake Brook

in 1874
(DeBeers Atlas)

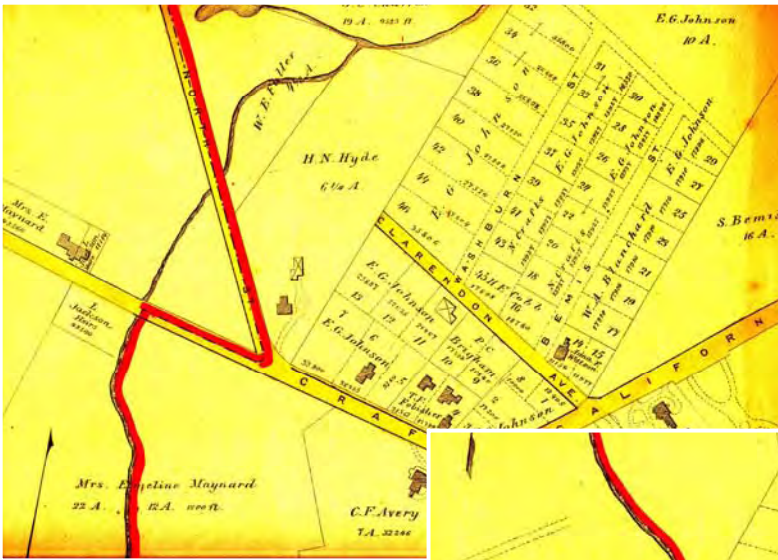


527 Washington St.
Newton, MA 02458
617.796.1450
newtonhistorymuseum@lycos.com
www.newtonhistorymuseum.org

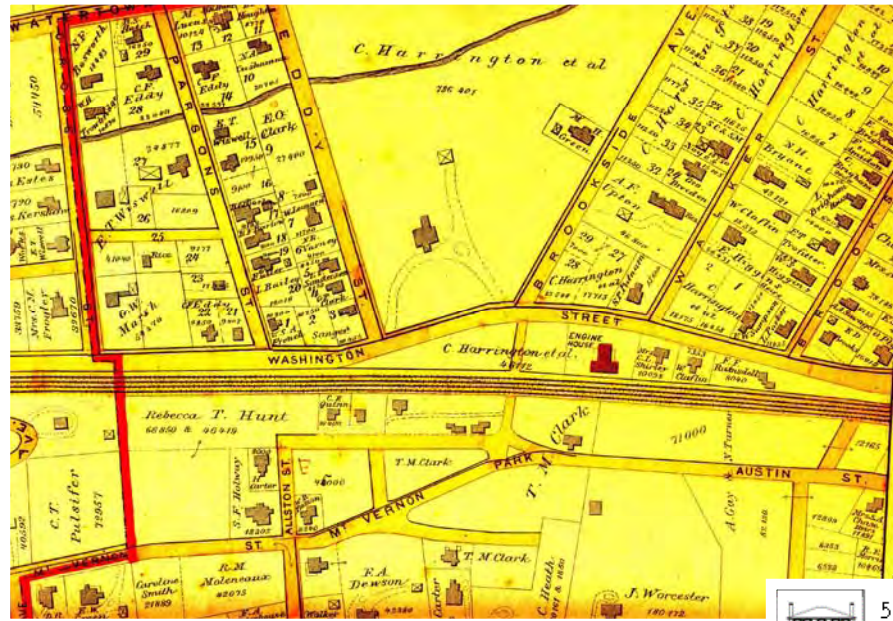
Cheesecake Brook
in 1886



527 Washington St.
Newton, MA 02458
617.796.1450
newtonhistorymuseum@lycos.com
www.newtonhistorymuseum.org



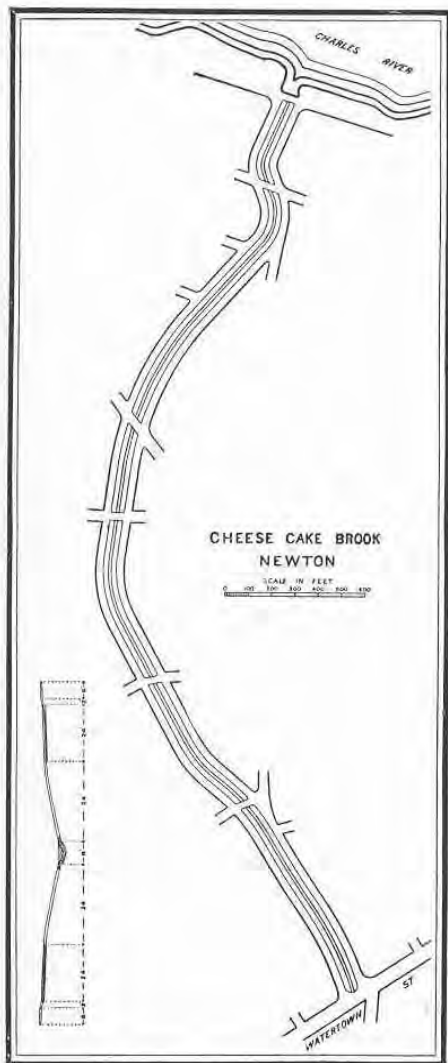
Cheesecake Brook
a closer view in 1886



527 Washington St.
Newton, MA 02458
617.796.1450
newtonhistorymuseum@lycos.com
www.newtonhistorymuseum.org

Cheesecake Brook

in Charles Eliot's 1893 plan
for a metropolitan Boston
parks system



4.15 The advantages of public ownership of even small streams in suburban developments was noted in the park plan. Cheese-Cake Brook in Newton could be preserved by building roadways on either side. The roadways would allow houses to have, in Eliot's words, "their fronts, and not their back yards, turned towards water-side roads," increasing the value of the land on either side of the stream.

from the program book for
Quixote the 2nd
a benefit performance sponsored by
the Albemarle Golf Club
1895



The Fessenden School

For Young Boys

Albemarle Road, West Newton

Prepares for the Newton High School and OTHER LEADING SECONDARY SCHOOLS; number limited; spacious grounds for golf, tennis, base ball and foot-ball; trolley connection with all the Newtons.

Tuition for day pupils, including dinner, \$200.00.

F. J. FESSENDEN, Principal



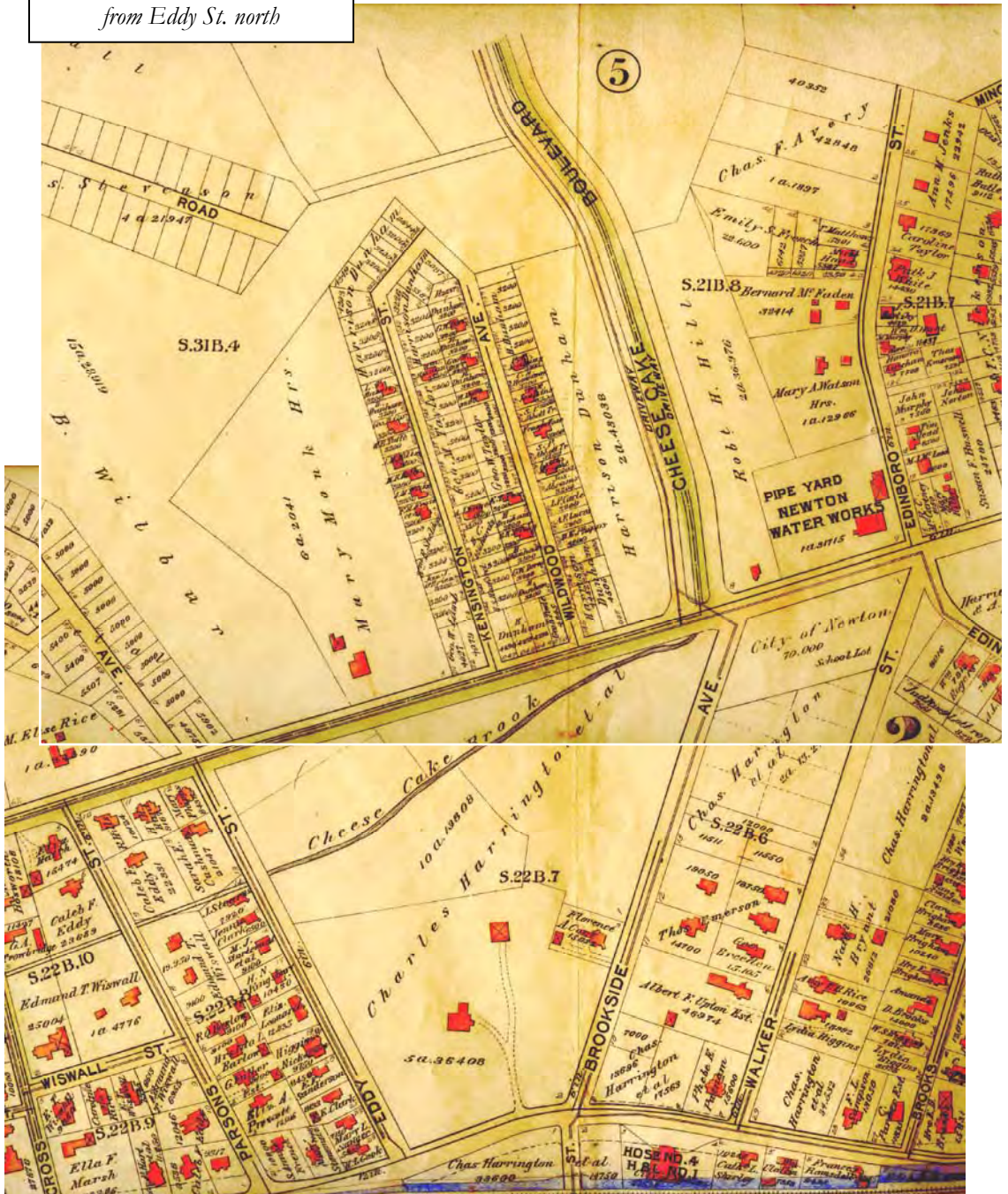
527 Washington St.
Newton, MA 02458
617.796.1450

newtonhistorymuseum@lycos.com
www.newtonhistorymuseum.org

Cheesecake Brook

in 1895

from Eddy St. north



527 Washington St.
Newton, MA 02458

617.796.1450

newtonhistorymuseum@lycos.com

www.newtonhistorymuseum.org

Cheesecake Brook

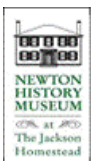
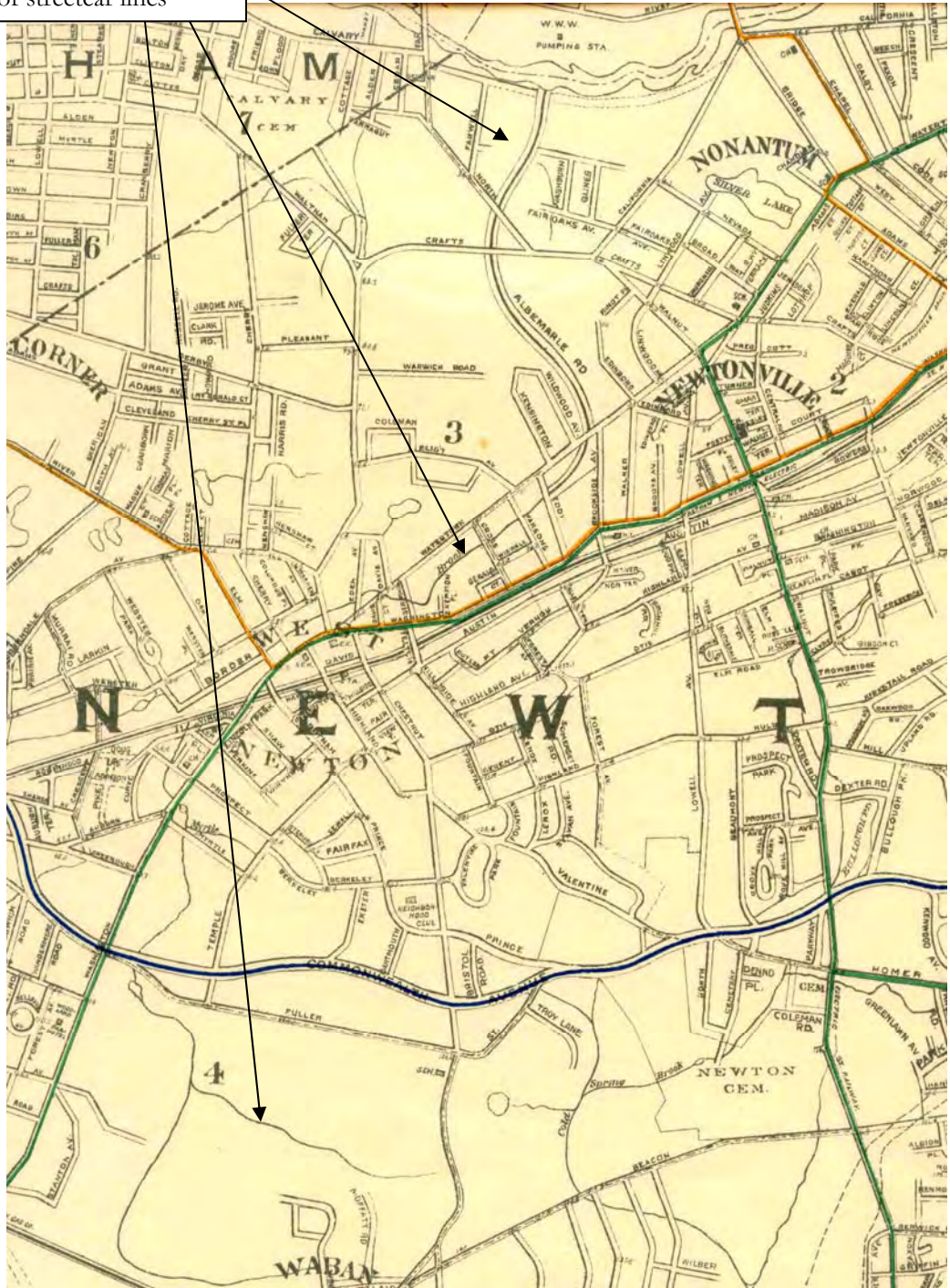
in 1895
from Crafts St.
to the Charles River



527 Washington St.
Newton, MA 02458
617.796.1450
newtonhistorymuseum@lycos.com
www.newtonhistorymuseum.org

Cheesecake Brook

on 1898 map
of streetcar lines



527 Washington St.

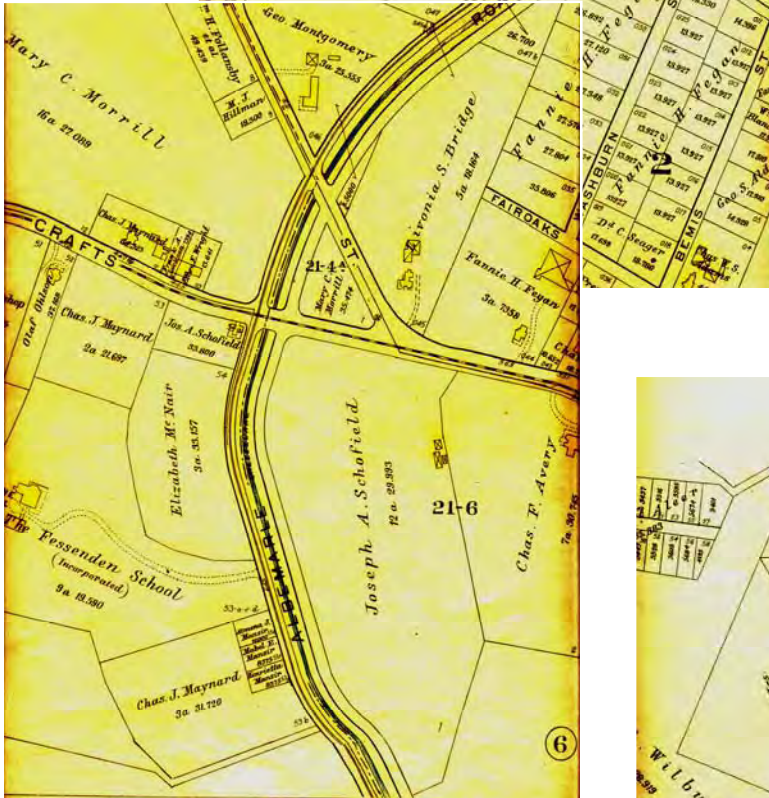
Newton, MA 02458

617.796.1450

newtonhistorymuseum@lycos.com

www.newtonhistorymuseum.org

Cheesecake Brook
in 1907



527 Washington St.
Newton, MA 02458
617.796.1450
newtonhistorymuseum@lycos.com
www.newtonhistorymuseum.org

from
Some Newtonville Homes
 pub'd 1913



1 Fessenden School, Albemarle Road

Crafts Street Homes:

2 L. B. Morrill

3 Chas. F. Avery

4 W. I. Lamson



1 A Chalet type, J. R. Prescott, opposite Linwood Park
 2 Linwood Park, Junction Walnut and Crafts Streets



Daniel Jackson house on Crafts Street, opposite Albemarle Golf Links.
 Built in 1749



Horace Mann Grammar School



527 Washington St.
 Newton, MA 02458
 617.796.1450
 newtonhistorymuseum@lycos.com
 www.newtonhistorymuseum.org

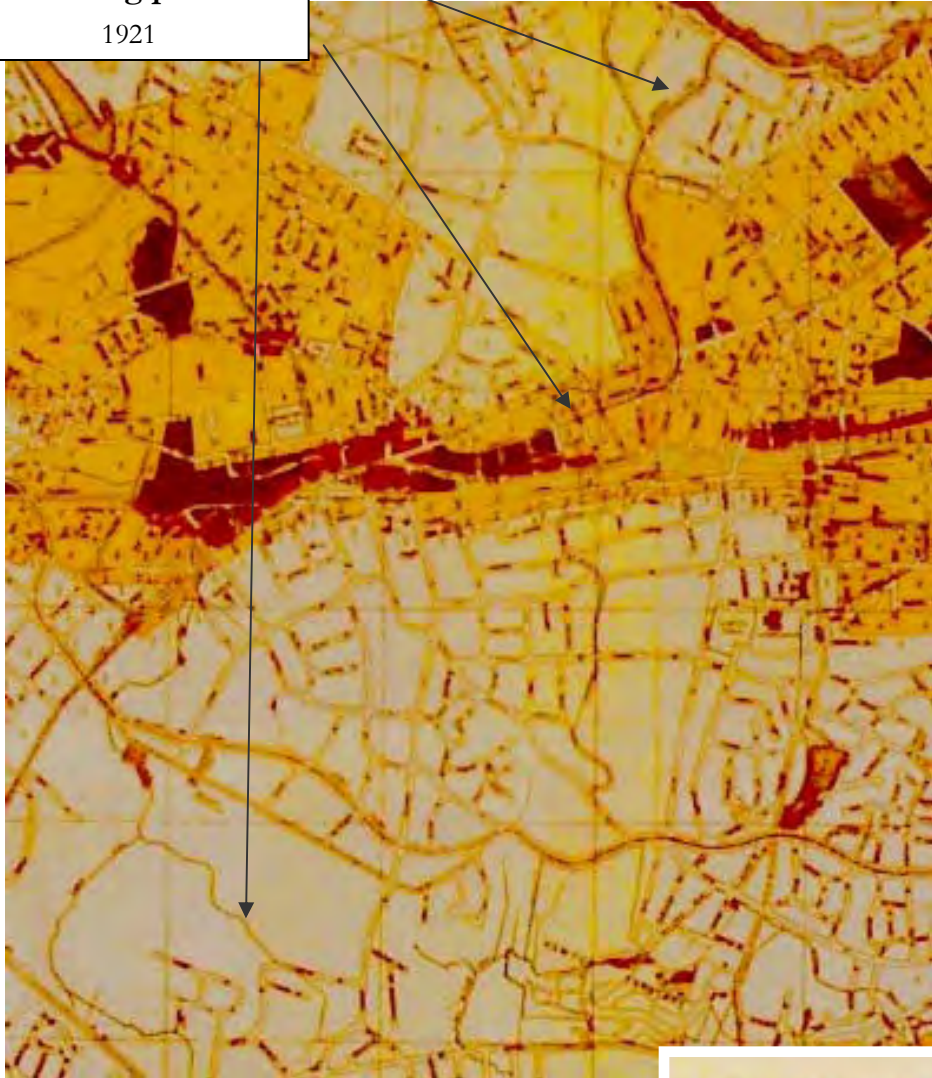
Cheesecake Brook
in 1917



527 Washington St.
Newton, MA 02458
617.796.1450
newtonhistorymuseum@lycos.com
www.newtonhistorymuseum.org

**Cheesecake Brook
on Newton's first
zoning plan**

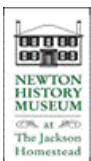
1921



**MAP ACCOMPANYING
DRAFT OF
ZONING ORDINANCE
FOR THE
CITY OF NEWTON
MASSACHUSETTS**

DISTRICTS

-  SINGLE RESIDENCE
-  GENERAL RESIDENCE
-  BUSINESS
-  COMMERCIAL
-  INDUSTRIAL



527 Washington St.
Newton, MA 02458
617.796.1450

newtonhistorymuseum@lycos.com
www.newtonhistorymuseum.org

Cheesecake Brook
in 1929



527 Washington St.
Newton, MA 02458
617.796.1450
newtonhistorymuseum@lycos.com
www.newtonhistorymuseum.org

Albemarle Golf Club

in 1913

The Albemarle Golf Club has a course of nine holes along the Cheese Cake Brook. Its club house is located on Crafts St., five minutes by the electric from Newtonville Square

- From *Some Newtonville Homes*, 1913.



Some of the 9 holes:

1. Up the street
2. Meadow
6. The Ridge
7. Apple Trees
8. Hillside

Some course rules:

Ball lying in brook must be played as a water-hazard: Penalty one stroke.

A ball lying in a paved gutter may be dropped in the road not nearer the hole.

- from undated scorecards in the Museum's files.



in 1929 –
north of Crafts St.

in 1929 –
between Warwick & Randlett
(site of present Fairway Drive)



527 Washington St.
Newton, MA 02458
617.796.1450
newtonhistorymuseum@lycos.com
www.newtonhistorymuseum.org

A N N O U N C I N G

Y E H A R V E S T F E S T I V A L !

Saturday - October 9, 1943

ALBEMARLE GOLF CLUB

Newtonville, Mass.

Pre-Supper Festivities and Fanning Bee - 7:00 P.M. Promptly

Full Course Supper - - - - 7:30 P. M.

Door Prizes !

Professional Entertainment !

Movies !

Music!

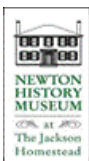
Games !

To be followed by - - BUFFET REFRESHMENTS

Tariff - One dollar and fifty cents per person.

A glorious finale to a most successful Victory Garden season which your fellow gardeners want you to share with them. Please come promptly at 7:00 P. M. as festivities will start at that hour and are scheduled to continue throughout the evening.

Kindly signify your intentions to the Committee - c/o Clarence Todd, Chairman, BIG - 2613 - not later than 12:00 - Noon - Thursday - October 7th.

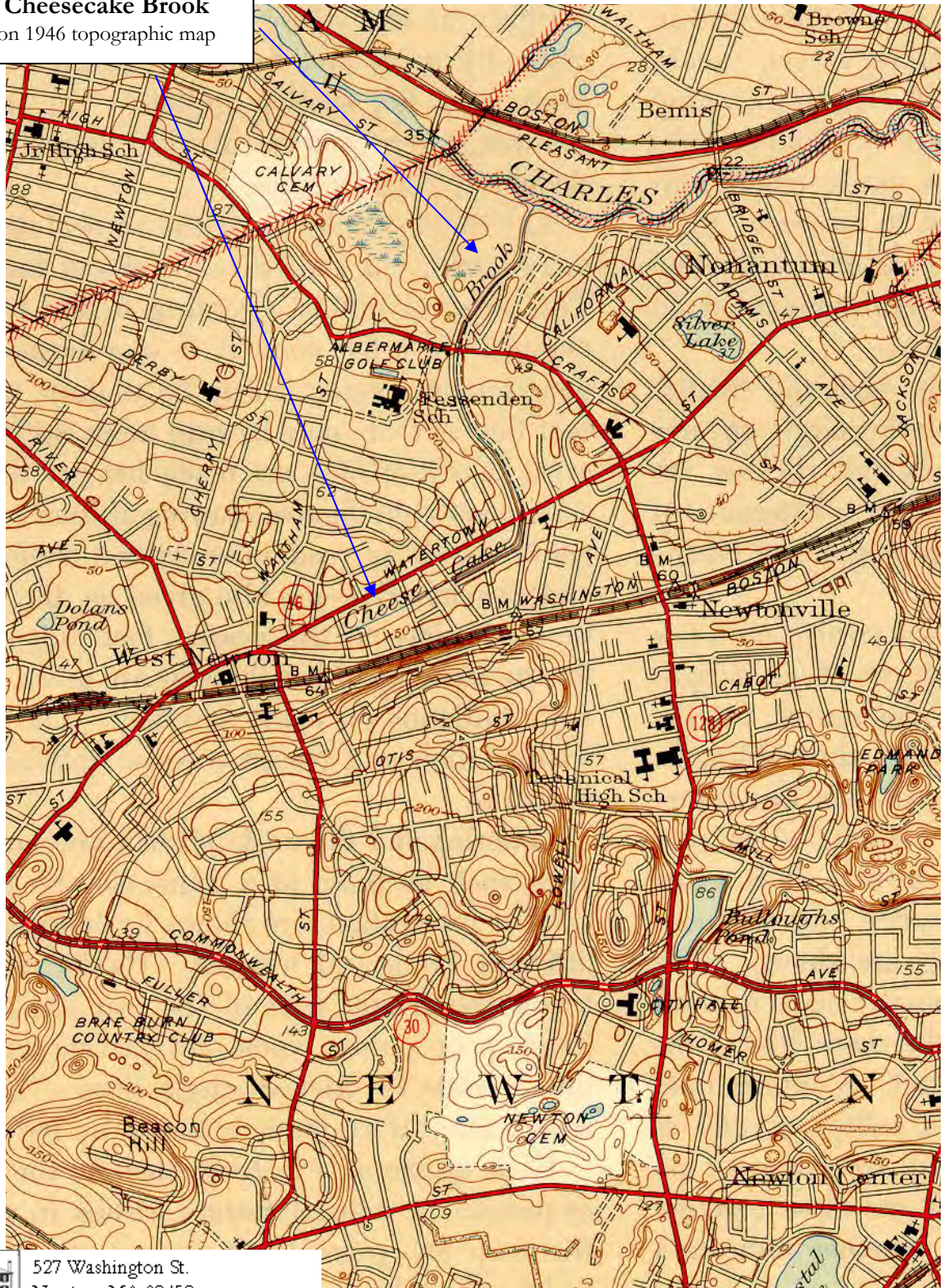


527 Washington St.
Newton, MA 02458
617.796.1450

newtonhistorymuseum@lycos.com
www.newtonhistorymuseum.org

Cheesecake Brook

on 1946 topographic map



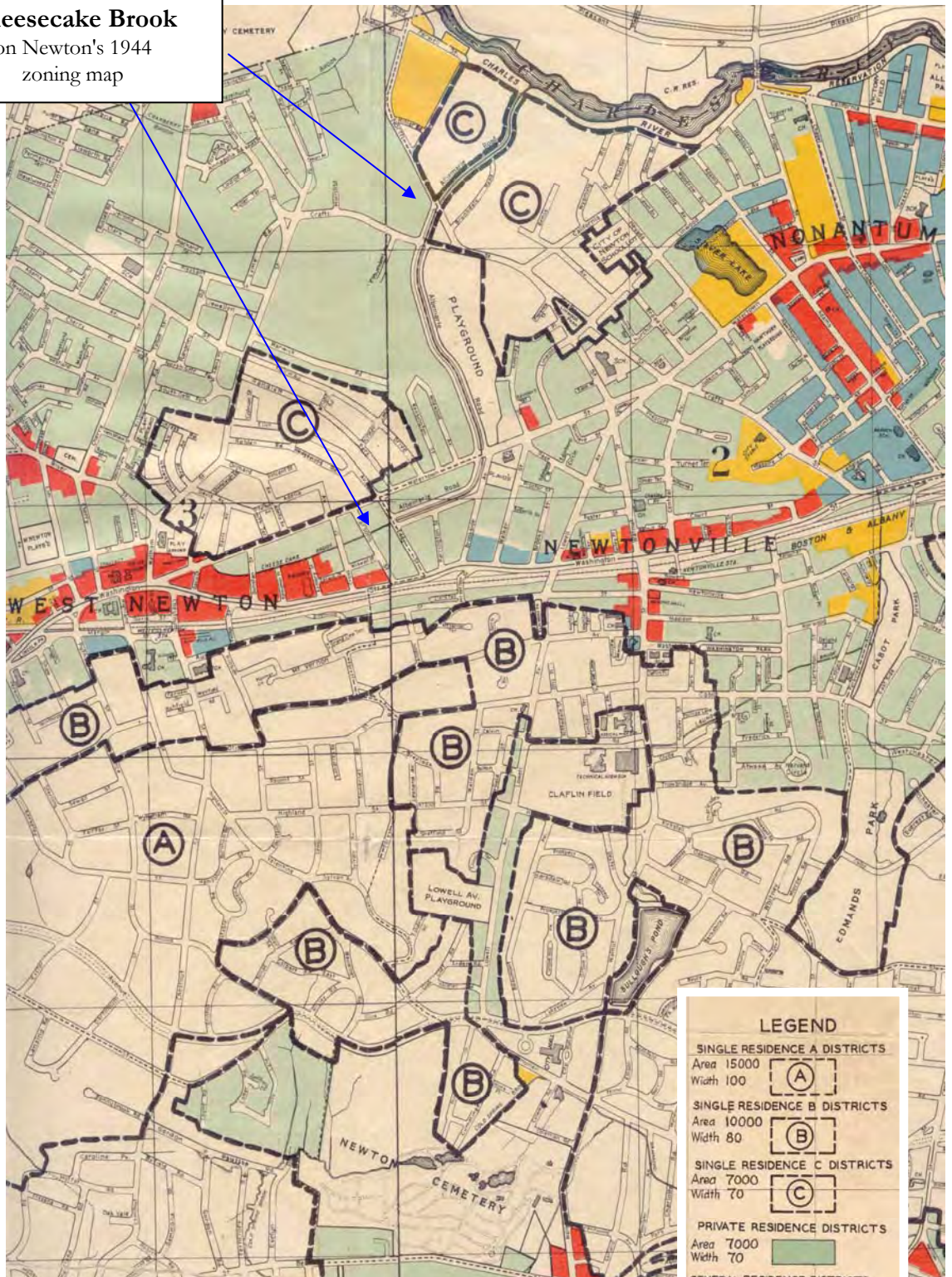
527 Washington St.
Newton, MA 02458

617.796.1450

newtonhistorymuseum@lycos.com

www.newtonhistorymuseum.org

Cheesecake Brook
on Newton's 1944
zoning map

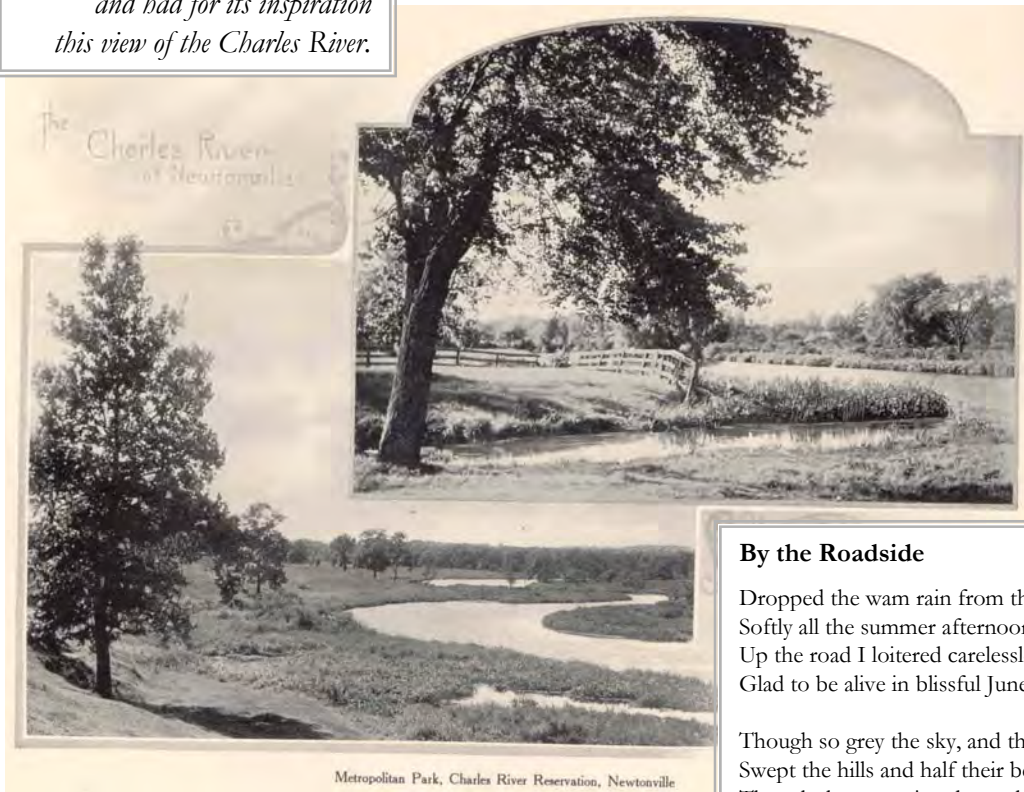
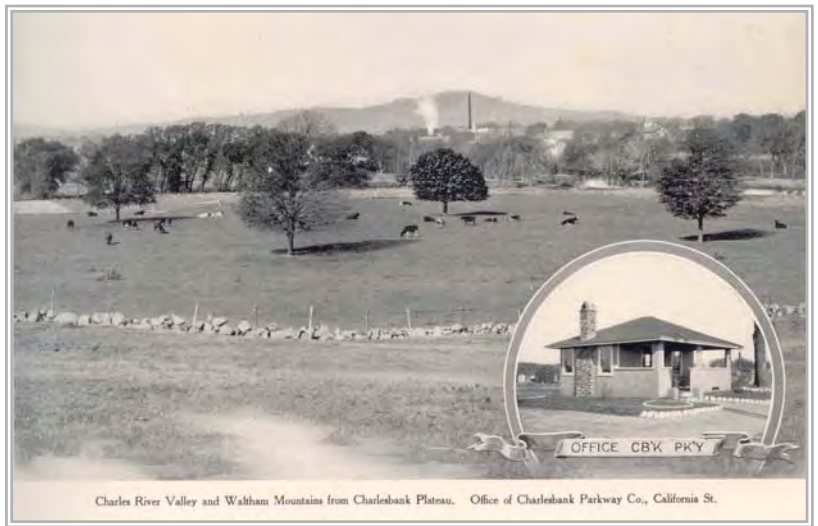


LEGEND	
SINGLE RESIDENCE A DISTRICTS Area 15000 Width 100	(A)
SINGLE RESIDENCE B DISTRICTS Area 10000 Width 80	(B)
SINGLE RESIDENCE C DISTRICTS Area 7000 Width 70	(C)
PRIVATE RESIDENCE DISTRICTS Area 7000 Width 70	(Green)
GENERAL RESIDENCE DISTRICTS Area 7000 Width 70	(Light Blue)
BUSINESS DISTRICTS	(Red)
MANUFACTURING DISTRICTS	(Yellow)



527 Washington St.
Newton, MA 02458
617.796.1450
newtonhistorymuseum@lycos.com
www.newtonhistorymuseum.org

*The poem below
by Celia Thaxter
was written at Newtonville,
and had for its inspiration
this view of the Charles River.*



By the Roadside

Dropped the wam rain from the brooding sky
Softly all the summer afternoon'
Up the road I loitered carelessly,
Glad to be alive in blissful June.

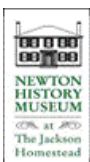
Though so grey the sky, and though the mist
Swept the hills and half their beauty hid;
Though the scattering drops the broad leaves
kissed,

And no ray betwixt the vapor slid,

Yet the daisies tossed their white and gold
In the quiet fields on either side,
And the green gloom deepened in the old
Walnut trees that flung their branches wide;

And the placid river wound away
Westward to the hills through meadows fair,
Flower-fringed and starred, while blithe
and gay
Called the blackbirds through the balmy air.

Photos and poem from *Some Newtonville Homes*,
pub'd 1913



527 Washington St.
Newton, MA 02458
617.796.1450

newtonhistorymuseum@lycos.com
www.newtonhistorymuseum.org