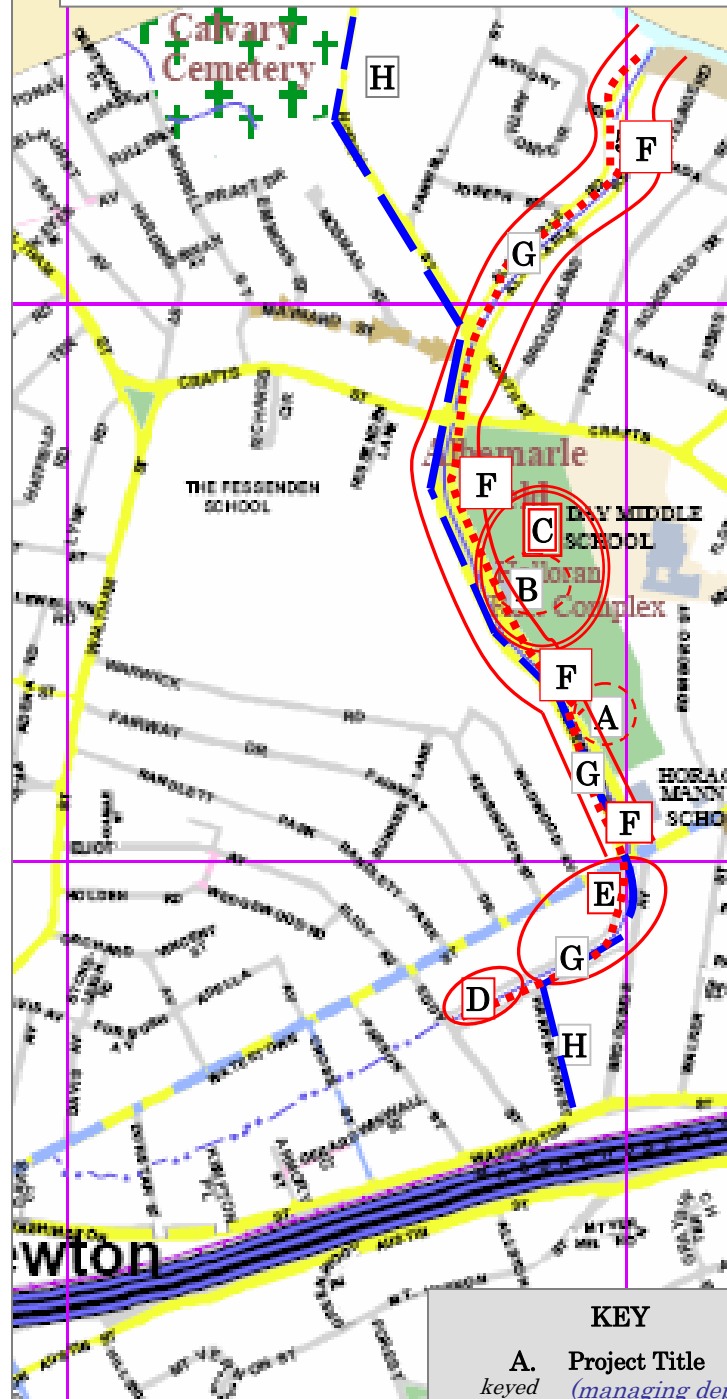


as of 1 February 2010

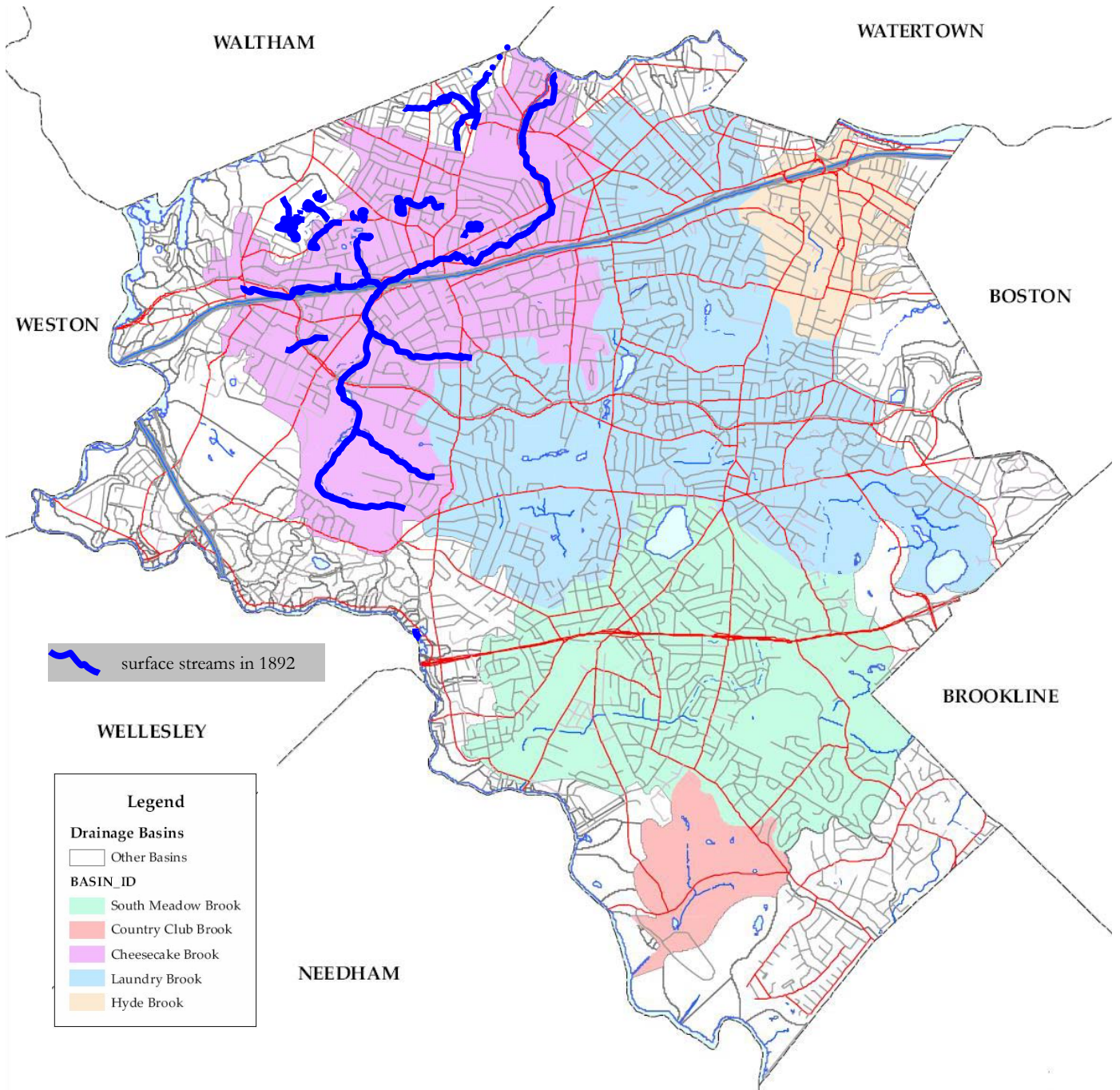
Proposals & Projects with Community Preservation (CP), CDBG & Other Funding for Albemarle Park, Albemarle Road & Cheesecake Brook in Newton, Massachusetts

- A. Albemarle Community Commons** (*Parks & Rec*)
CP-funded design & construction, several tasks remaining
- B. Gath Pool** (*Parks & Rec*)
CP-funded design & construction, complete
- C. Albemarle Park Central Corridor** (*Parks & Rec*)
CP-funded design, contract canceled due to court ruling
Weston & Sampson
- D. Cheesecake Brook Greenway 1: Eddy to Harrington Streets** (*Planning, Parks & Rec*)
CDBG-funded design & construction, complete; opening held 4 Nov 07
Weston & Sampson
- E. Cheesecake Brook Greenway 2: Harrington to Watertown Streets**
potential CP proposal, not yet submitted
- F. Cheesecake Brook Greenway 3: Watertown Street to Charles River** (*Public Works*)
CP-funded mater plan now online
Weston & Sampson
- G. Cheesecake Brook Retaining Wall Repairs** (*Public Works*)
funded by stormwater fee, work underway
Weston & Sampson
- H. possible route new MWRA water main to Watertown** (*Public Works*)
state agency planning on hold
Weston & Sampson



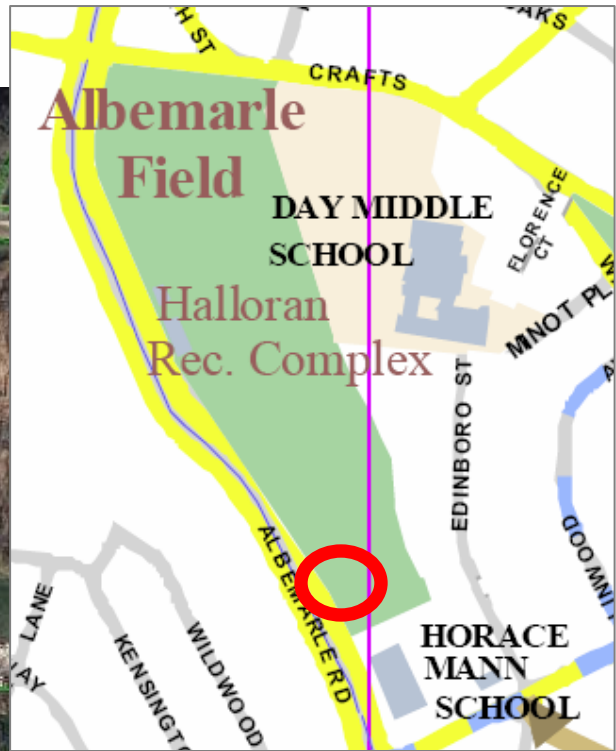
KEY	
A.	Project Title
keyed	(managing dept.)
to map)	status
	contractor

Cheesecake Brook Watershed



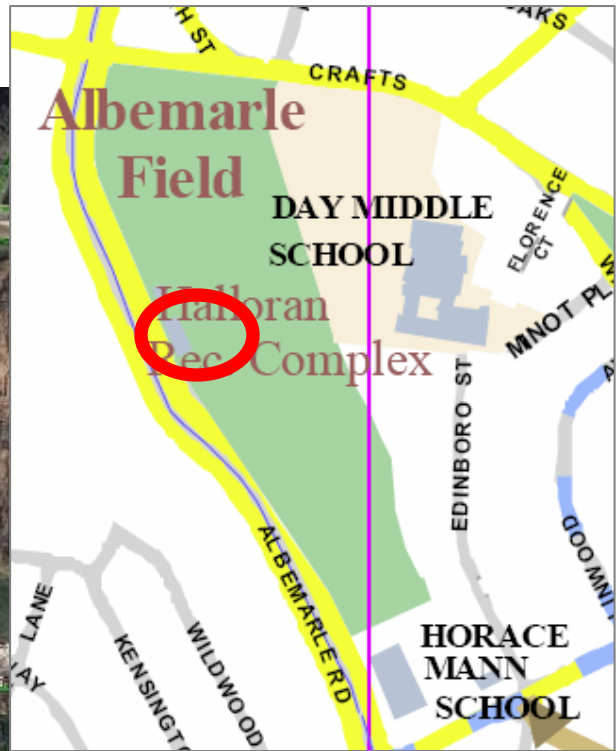
Albemarle Community Commons
(Outdoor Classroom)

project A. on multi-project map

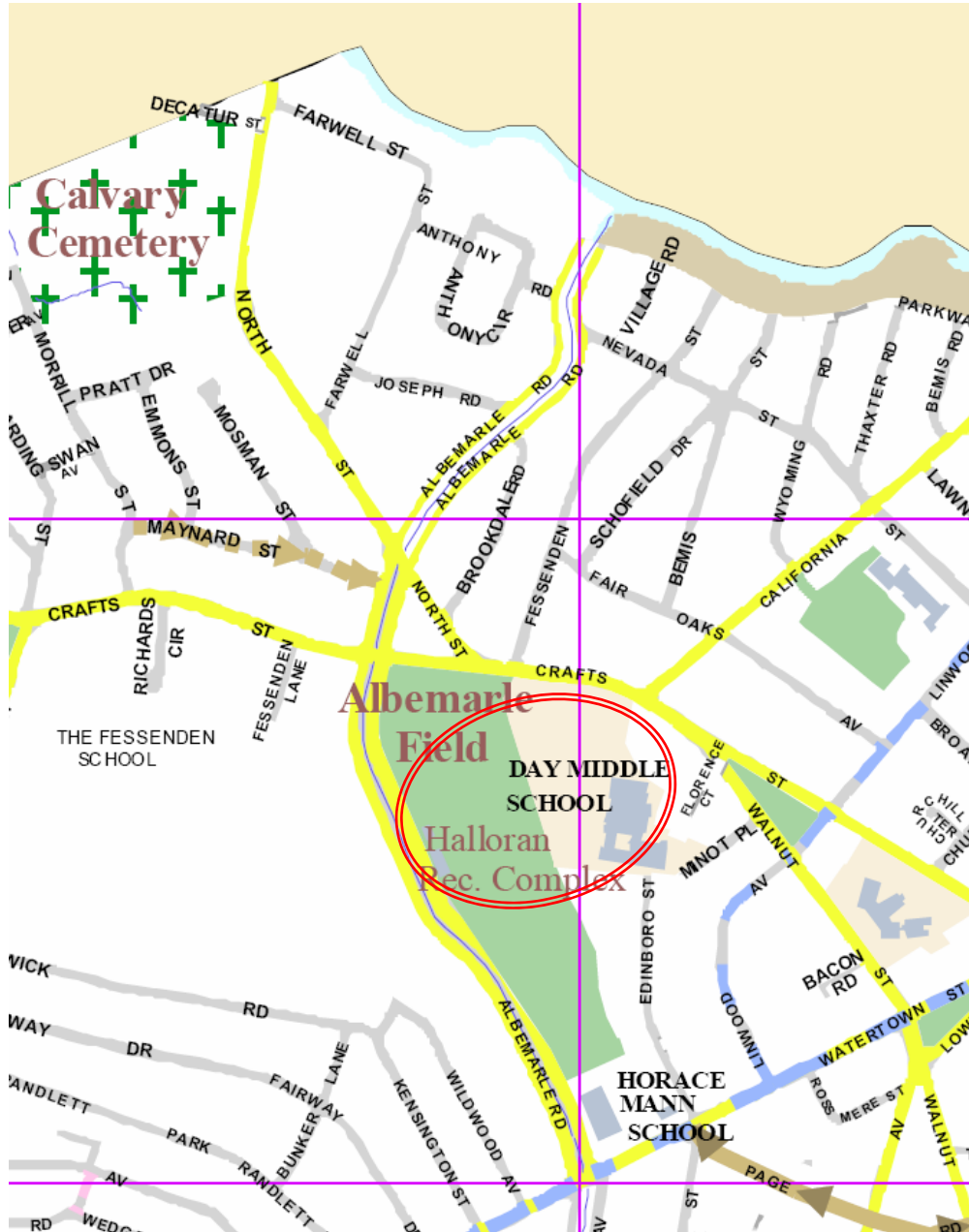


Gath Pool

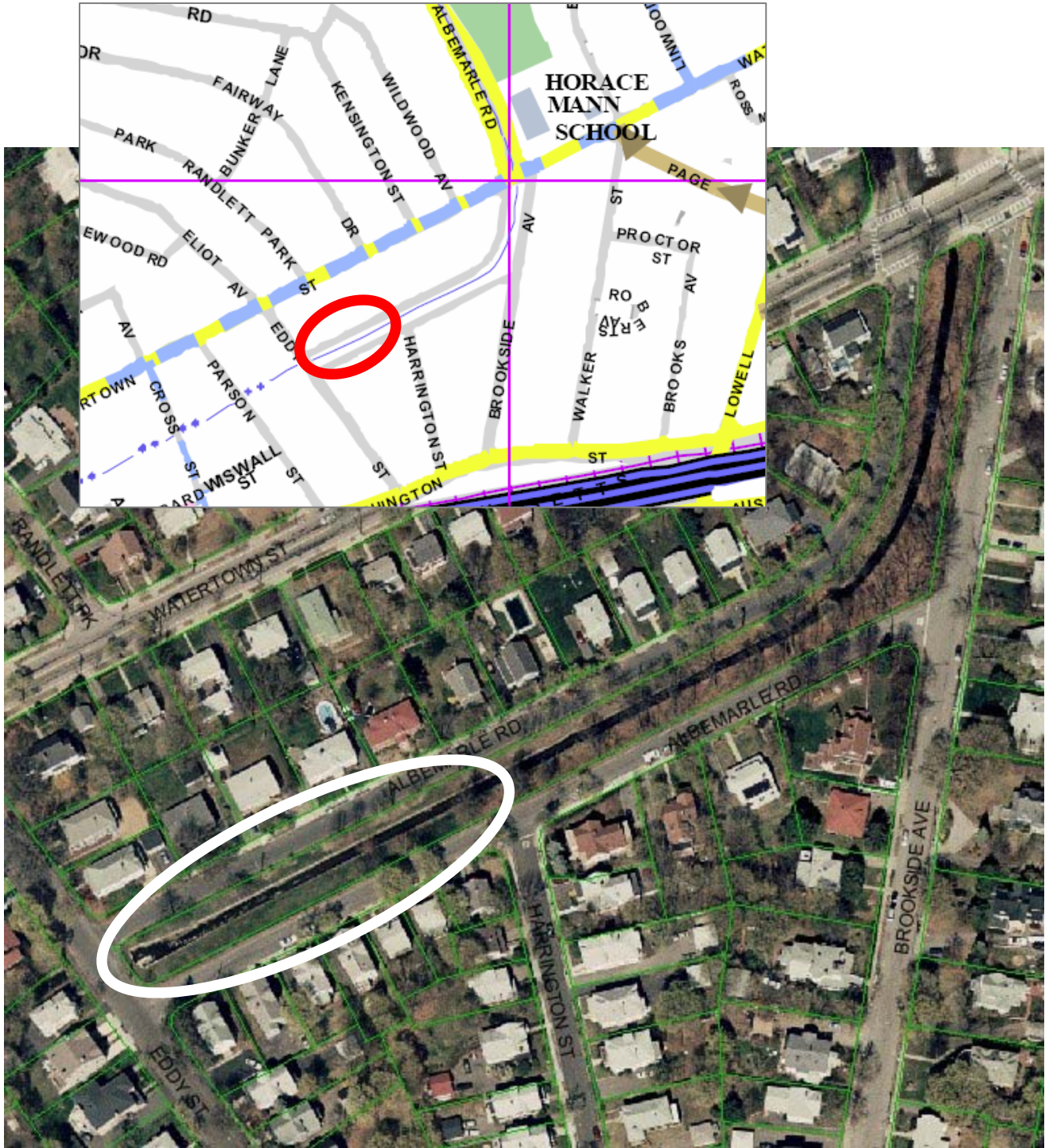
project B. on multi-project map



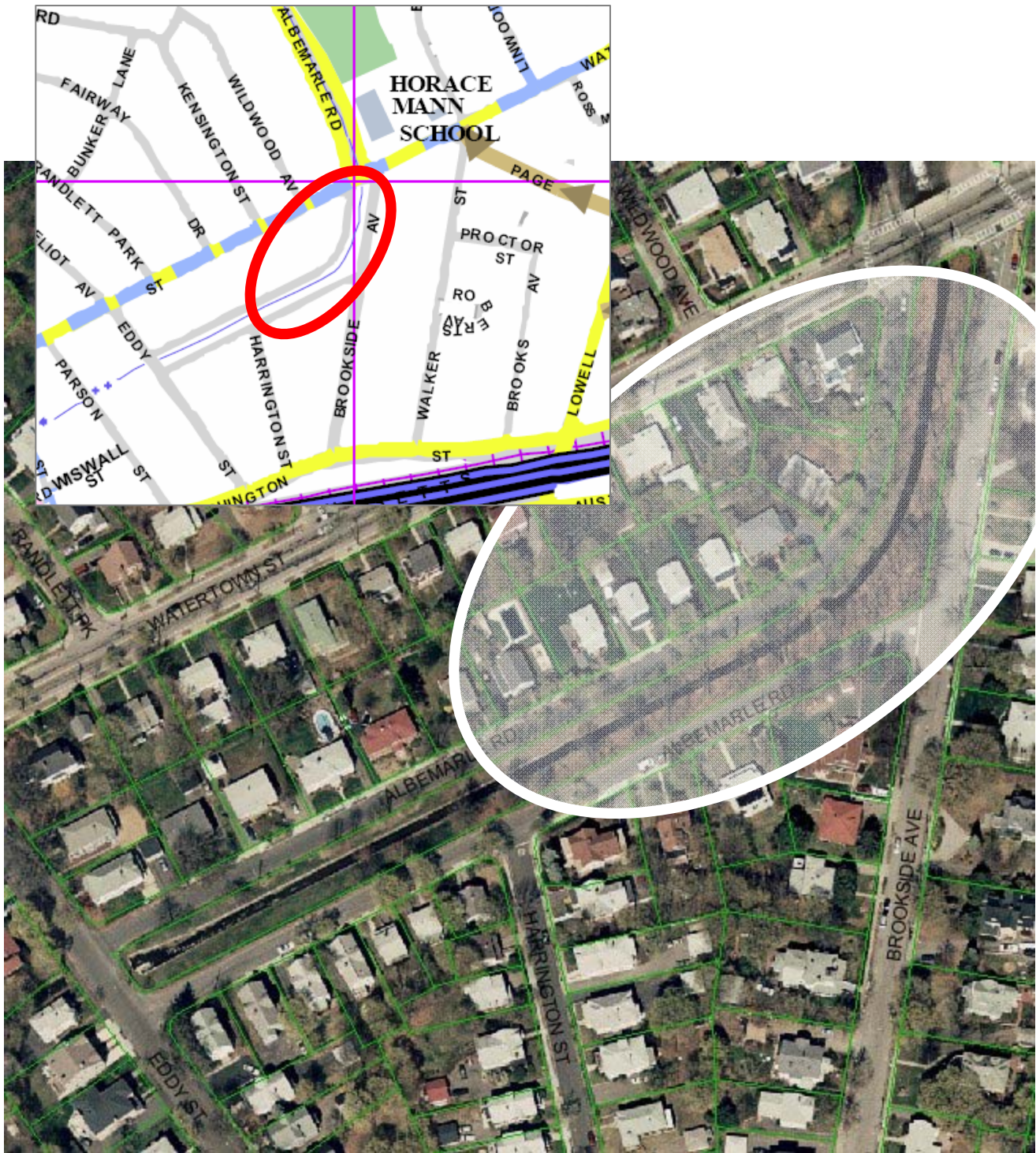
Albemarle Park Central Corridor
project C. on multi-project map



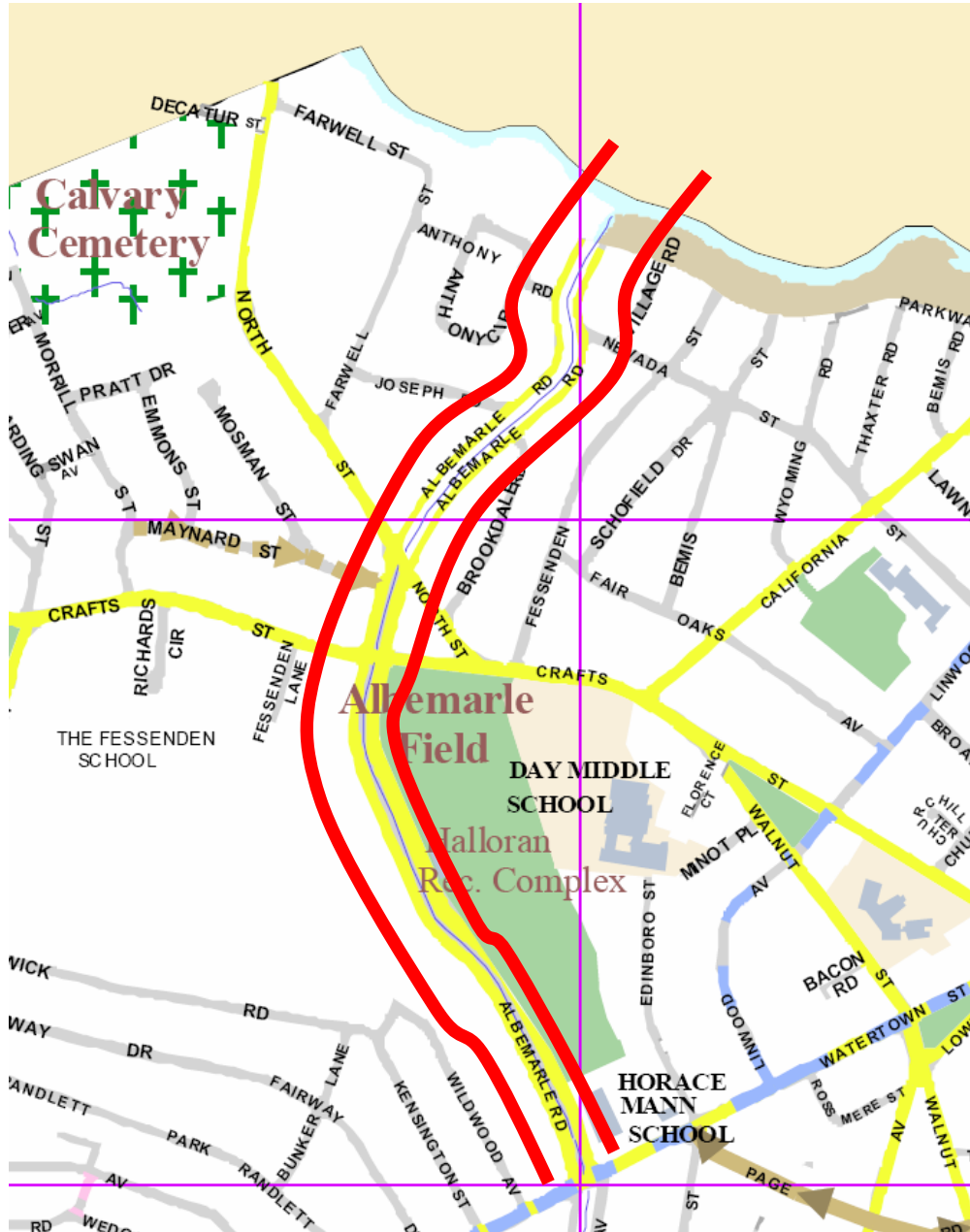
Cheesecake Brook Greenway 1
project D. on multi-project map



Cheesecake Brook Greenway 2
project E. on multi-project map

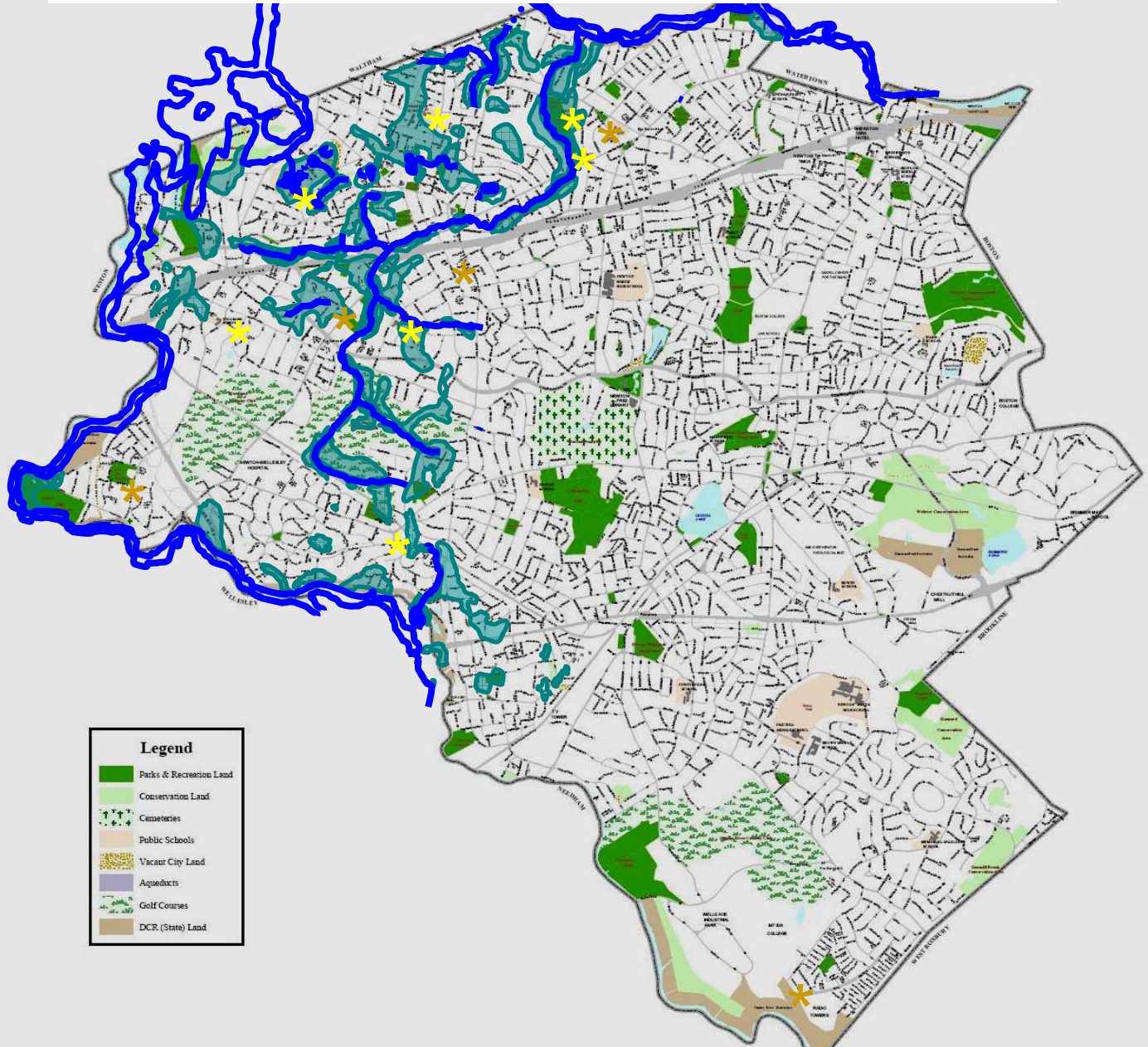


Cheesecake Brook Greenway 3
project F. on multi-project map



Newton Public Schools in & near the Cheesecake Brook Watershed

Needs & Opportunities for Urban Ecology & Stewardship?



Many schools were built on land taken from, or next to, current parks & conservation areas.



Newton public school in current use



former Newton public school converted for other use

Most schools were built on or near historic streams & wetlands.



surface water in 1892



wetlands in 1892