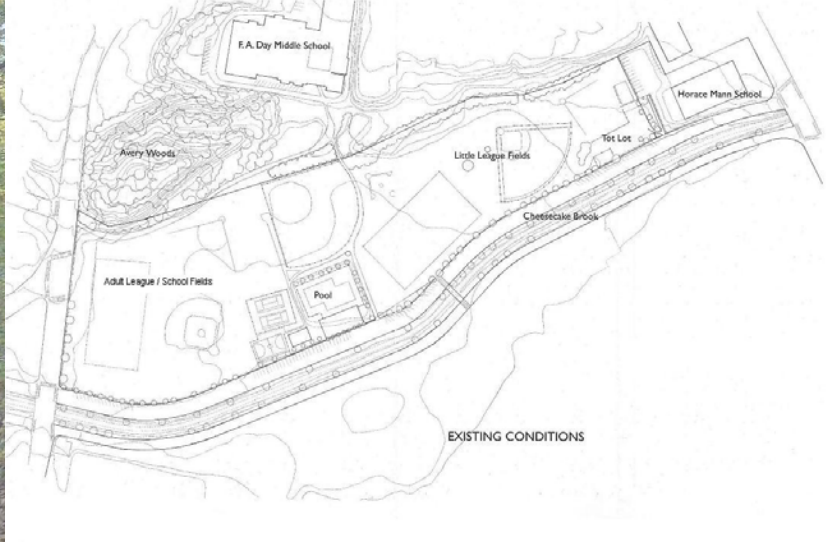


Project Background

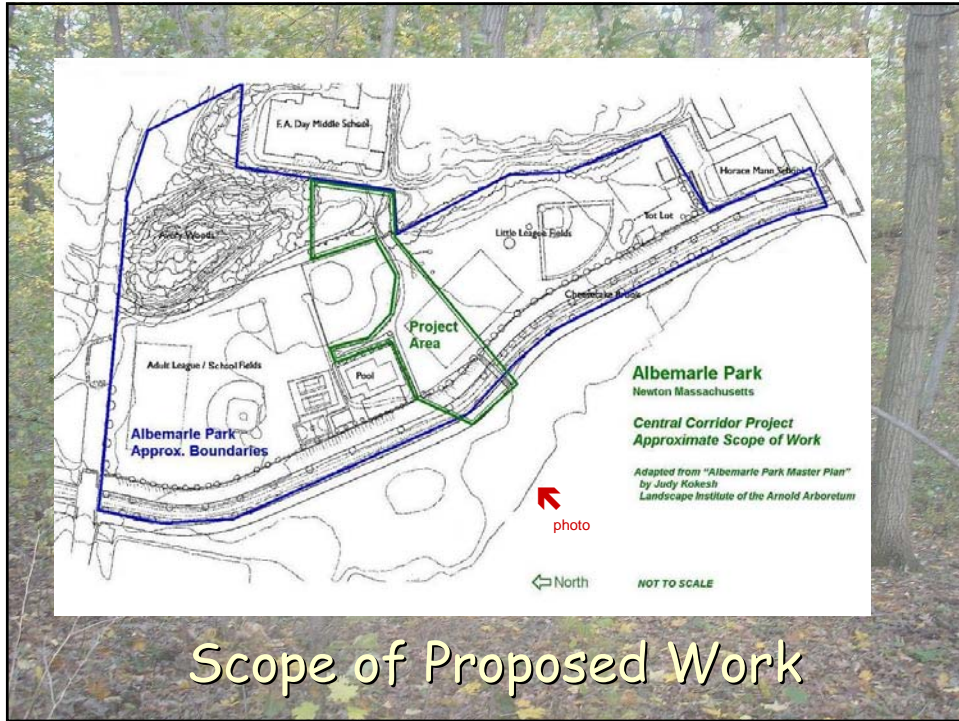
- Acknowledged need for park improvements. But first, analysis and planning framework
- Friends of Albemarle, with Parks and Recreation, sponsored:
 - Landscape Institute of the Arnold Arboretum independent project
 - Judy Kokesh researched the park, consulted with users, and developed a planning framework
- Kokesh suggestions have not been adopted
- Most pressing needs are in the park's "Central Corridor"
 - Footbridge and crossing
 - Avery Wood/ F.A. Day Transition
 - Connecting Pathway

Existing Conditions



Kokesh Recommendations

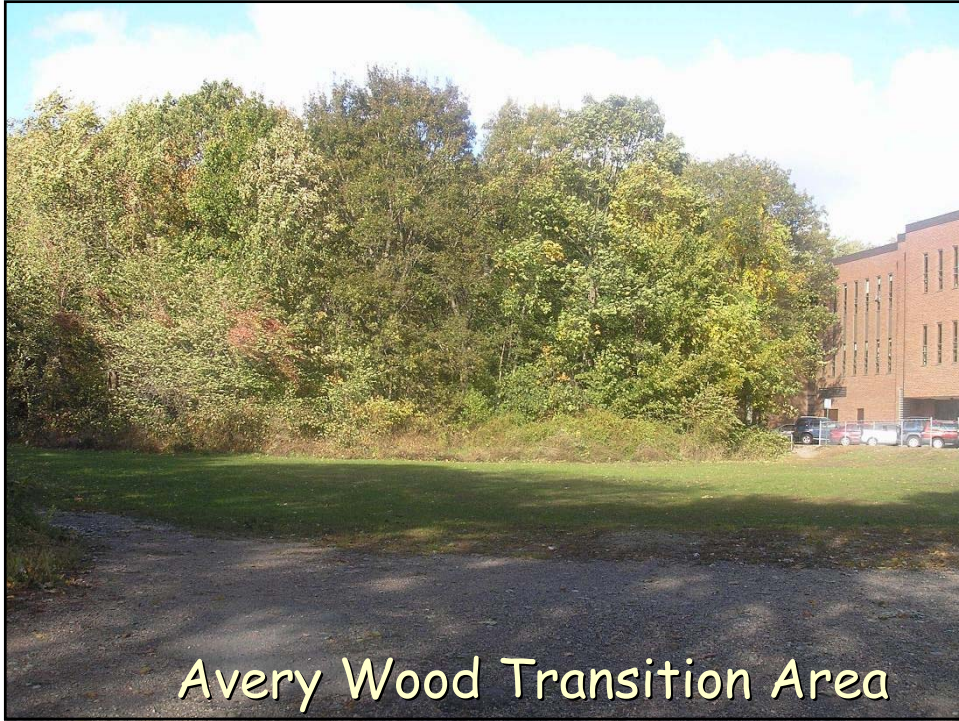


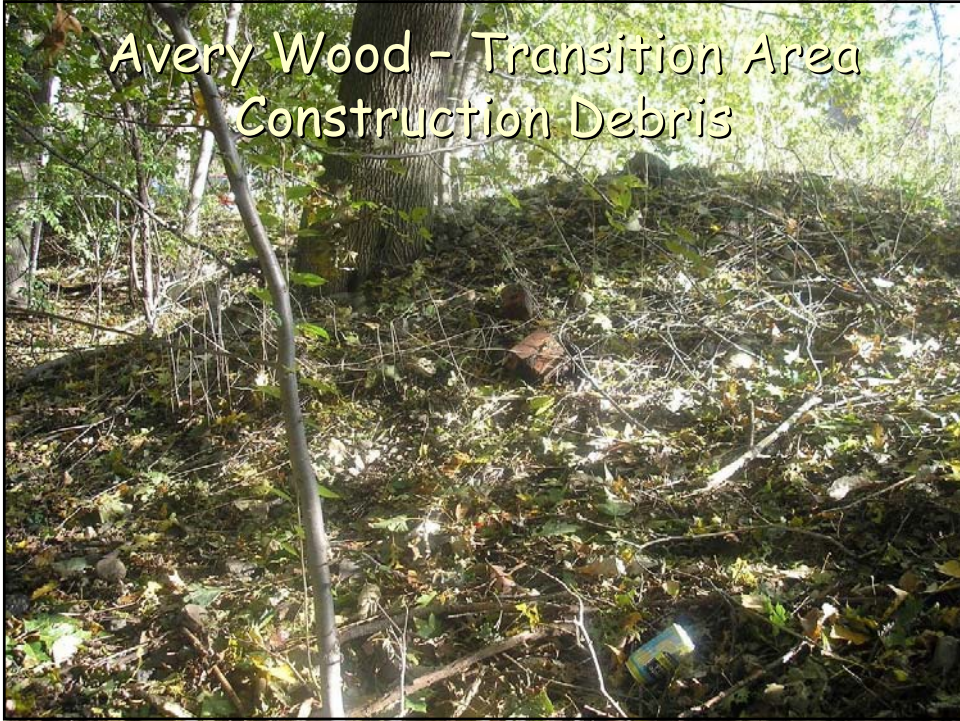


Scope of Proposed Work









Main Entrance to Park and School



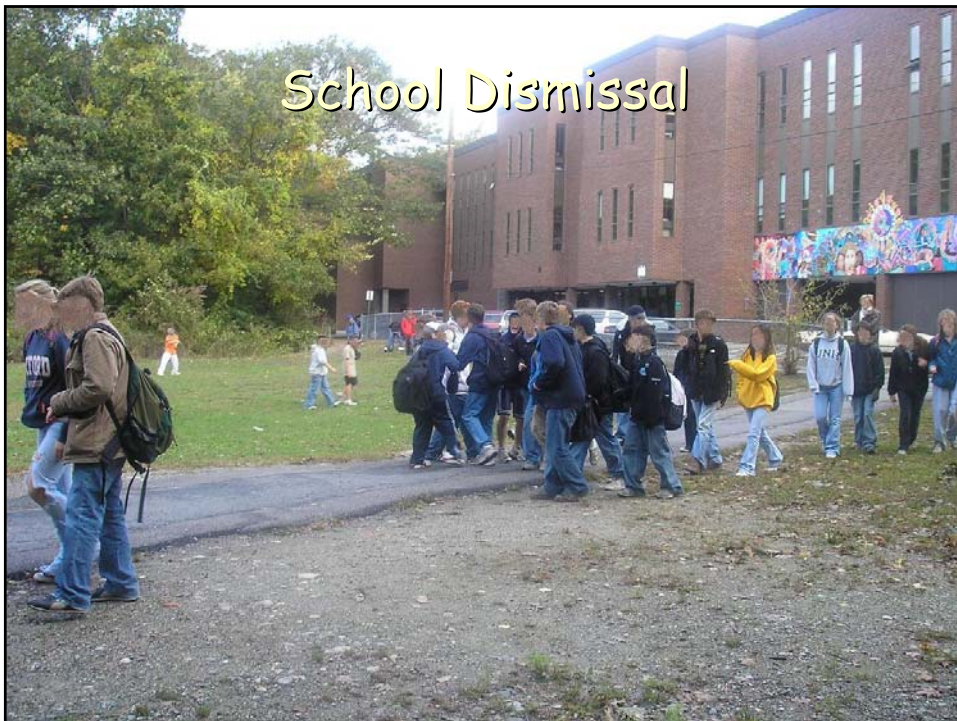
Pathway to F.A. Day Middle School



Pathway to F.A. Day Middle School



School Dismissal







Bridge and Crosswalk





Crosswalk



Flooding



Bridge Condition



Pathway to Wildwood Ave



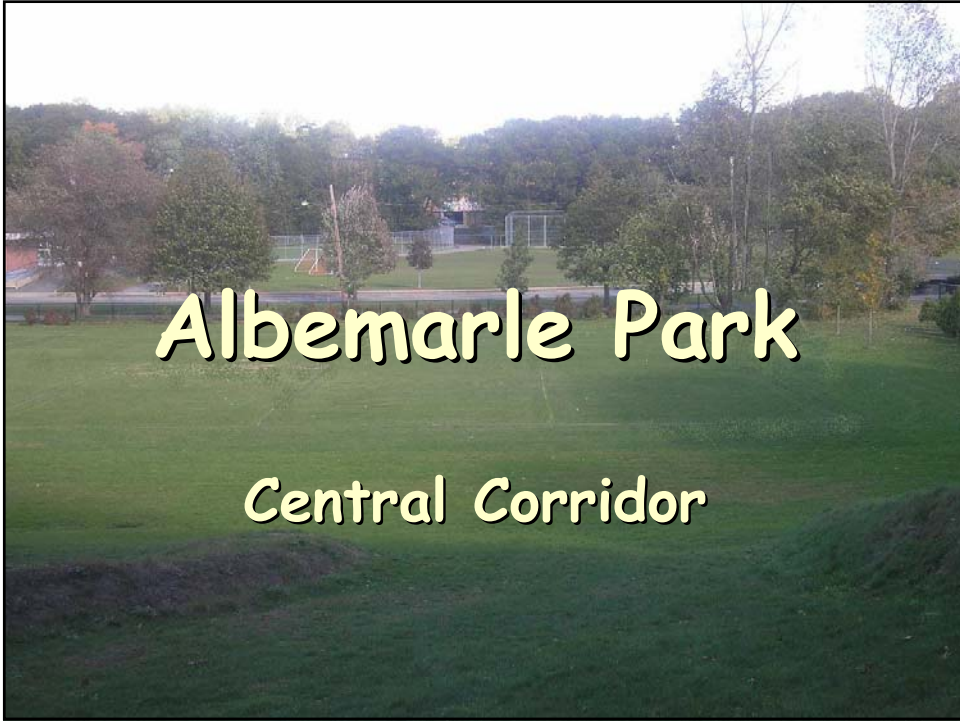
Project Summary

- Linkage
 - among the open spaces of north Newtonville
 - from open spaces to schools, neighborhoods, and recreational facilities
- Restoration of the edge of Avery Wood
- Footbridge - replacement with a safe accessible span
- New entry plaza for park and school
 - crosswalks and pick-up areas
- Re-alignment of the footpath
 - plantings, berms, lighting, and furnishings



Proposal Summary

- Seeking \$60,000 for design and engineering
- A designer will:
 - Survey the site
 - Meet with city agencies and the community
 - Develop schematic designs and cost estimates for consideration
 - Provide construction plans & documents, and supervise construction, if required
- On completion of the design process, we will evaluate and pursue potential funding sources:
 - Transportation funding authorities
 - Private foundations and individuals
 - Community Preservation resources



Albemarle Park

Central Corridor