

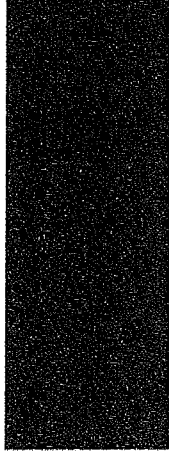
Attachment B

# HISTORIC BURYING GROUNDS PLAN OF WORK

YEAR 1      YEAR 2      YEAR 3      YEAR 4      YEAR 5

## Phase 1

- Tree/vegetation removal
- Stone conservation
- Regrade eroded areas (EPBG)
- Repair entrance (EPBG)
- Rebuild corner of Loring Park (EPBG)



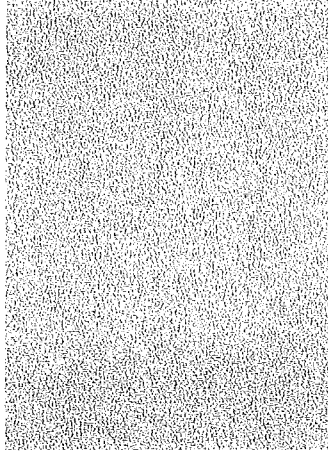
## Phase 2

- Tree pruning
- Stone conservation
- Tomb and monument repair
- Lawn rehabilitation, regrading and seeding
- Regrading over exposed vaults (WPBG)
- Recut stumps (SBG)
- Remove chains from posts (WPBG)
- New pedestrian/vehicular access gate (SPG & WPBG)
- New fence along north, west and south edges of site (SBG)
- New fence along Winchester Street (SBG)
- New fence along River and Cherry Streets (WBG)



## Phase 3

- New signage
- Tree and shrub planting
- Stone Conservation
- Repair wall (EPBG & SBG)
- Repoint wall (WPBG)
- New fence at north and west sides of site (WPBG)
- New stone pillars framing entrance (EPBG & WPBG)
- New fence along north and east sides of site (EPBG)
- New fence along Cotton and Centre Streets (EPBG)
- New gates (EPBG)



### Key:

- EPBG = East Parish Burying Ground
- SBG = South Burying Ground
- WPBG = West Parish Burying Ground

Attachment C

**Master Plan for Newton's Historic Burying Grounds**  
**Landscape, Structural and Stone Conservation Costs and Priorities**

*Current Costs Estimates as of October 2002*

	Urgent Years 1 & 2	Immediate Years 2 & 3	Future Years 4 & 5	Total
<b>East Parish Burying Ground</b>				
1 Landscape	29,688	18,735	167,462	215,885
2 Structural	11,529	43,163	3,243	57,935
3 Stone Conservation	49,907	23,491	476	73,874
Sub Total	91,124	85,389	171,181	347,694
<b>West Parish Burying Ground</b>				
1 Landscape	7,206	96,125	21,978	125,308
2 Structural	0	34,588	43,235	77,822
3 Stone Conservation	26,366	10,629	2,745	39,740
Sub Total	33,572	141,342	67,958	242,871
<b>South Burying Ground</b>				
1 Landscape	20,000	82,434	20,176	122,610
2 Structural	0	17,294	3,603	20,897
3 Stone Conservation	43,581	15,442	749	59,772
Sub Total	63,581	115,170	24,528	203,279
Grand Totals	\$188,277	\$341,901	\$263,666	\$793,844

*Original cost estimates were done as part of Master Plan in 1990.*

*2002 cost estimates are based on a price inflator for construction provided by the BEA  
and in consultation with the city's arborist.*

## East Parish Burying Ground (Centre and Cotton Streets)

### 1. Urgent

a. Remove Dead Trees	2,882	2,882			
b. Trees and volunteer growth removal	21,617	21,617			
c. Regrading eroded area affecting drive, tombs & gravestones (includes granite block slope retention at drive).	5,188	5,188			
d. Repair Entrance	4,323		4,323		
e. Rebuild NW corner of Loring Park	7,206		7,206		
f. Stone Conservation	0				
1. Three person crew	25,898	25,898			
2. Four person crew	18,937	18,937			
3. Cleaning (36 gravestones)	3,891	3,891			
4. Materials	1,182	1,182			

---

91,124

### 2. Immediate

a. Lawn rehabilitation, regrading & seeding	4,323			4,323	
b. Tree pruning	14,412	14,412			
c. Repoint wall	3,603	3,603			
d. Repair Tomb A	2,522	2,522			
e. Realign Tomb Base B	937	937			
f. Repair Tomb C	2,162	2,162			
g. Repair Tombs G & H	4,684	4,684			
h. Repair Tomb I	1,801	1,801			
i. Rebuild Arch and Face	5,765	5,765			
j. Repair Hull Tomb	5,765	5,765			
k. Repair Tomb 1195	4,323	4,323			
l. Repair Tomb 1047	3,603	3,603			
m. Repair Tomb 1842	793	793			
n. Repair Tomb 985	865	865			
o. Repair Tomb 1150	3,603	3,603			
p. Repair Tomb 232	1,801	1,801			
q. Repair Tomb 1370	937	937			
r. Stone Conservation					
1. Three person crew	11,630	11,630			
2. Four person crew	9,728	9,728			
3. Cleaning (16 Gravestones)	1,729	1,729			
4. Materials	404	404			

---

85,388

### 3. Future

a. Repair Wall	3,243			3,243	
b. New signage	1,441			1,441	
c. New Tubular steel fence along Cotton and Centre Streets	113,131			113,131	
d. New chain link fence	7,206			7,206	
e. Two new tubular steel gates	37,470			37,470	
f. New plantings	7,206			7,206	
g. Two stone pillars framing vehicular gate	1,009			1,009	
h. Stone conservation					
1. Tree person crew	432			432	
2. Materials	43			43	

---

171,180

East Parish Burying Grounds sub total

347,693

Year 1    Year 2    Year 3    Year 4    Year 5

79,595    92,594    4,323    171,180    0

## West Parish Burying Ground (Cherry and River Streets)

### 1. Urgent

a. Tree and Volunteer Growth Removal	7,206
b. Stone Conservation	
1. Three person crew	11,890
2. Four person crew	11,284
3. Cleaning (23 Gravestones)	2,486
4. Materials	706
	<hr/>
	<b>33,572</b>

### 2. Immediate

a. New tubular steel pedestrian/vehicular access gate	18,735
b. New tubular steel fence along River and Cherry Streets	69,896
c. Lawn rehab, regrading and seeding	2,306
d. Tree pruning	4,323
e. Regrading over exposed vaults	721
f. Remove chains from posts	144
g. Local rebuilding	3,603
h. Local rebuilding	12,970
i. Repair vault	2,162
j. Repair mound tomb	12,970
k. Repair tomb 197	2,882
l. Stone Conservation	
1. Three person crew	2,767
2. Four person crew	6,485
3. Cleaning (10 Gravestones)	1,081
4. Materials	295
	<hr/>
	<b>141,341</b>

### 3. Future

a. Repoint wall	43,235
b. New signage	1,441
c. Tree planting	8,647
d. New chain link fence	5,765
e. Two new granite pillars framing entrance	6,125
f. Stone Conservation	
1. Three person crew	519
2. Four person crew	1,946
3. Cleaning	216
4. Materials	65
	<hr/>
	<b>67,958</b>

<b>West Parish Burying Grounds sub total</b>	<hr/> <b>242,871</b>
----------------------------------------------	----------------------

Year 1	Year 2	Year 3	Year 4	Year 5
7,206				
	11,890			
	11,284			
	2,486			
	706			
		18,735		
		69,896		
		2,306		
	4,323			
	721			
	144			
	3,603			
	12,970			
		2,162		
		12,970		
		2,882		
		2,767		
		6,485		
		1,081		
		295		
				43,235
				1,441
				8,647
				5,765
				6,125
				519
				1,946
				216
				65
<b>7,206</b>	<b>48,127</b>	<b>119,580</b>	<b>0</b>	<b>67,958</b>

